

Screening centres

Eastern Health and Social Services Board

The Screening Centre
12-22 Linenhall Street, Belfast BT2 8BS
Tel: 028 9033 3700

Northern Health and Social Services Board

Northern Area Breast Screening and Assessment Unit
Level A, Antrim Area Hospital
45 Bush Road, Antrim BT41 2RL
Tel: 028 9442 4425

Southern Health and Social Services Board

The Breast Screening Unit
Lurgan Hospital
Sloan Street, Lurgan BT66 8NX
Tel: 028 3834 7083

Western Health and Social Services Board

The Breast Screening Unit
Ground Floor, The Nurses' Home
Altnagelvin Area Hospital
Glenshane Road, Londonderry BT47 6SB
Tel: 028 7161 1443

For information on breast screening in Northern Ireland see
www.cancerscreening.n-i.nhs.uk

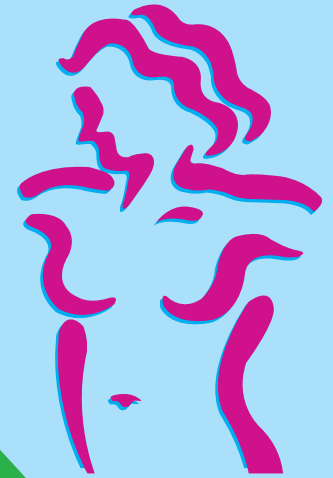


Health
Promotion
Agency

Designed and produced by the Health Promotion Agency
for Northern Ireland on behalf of the Department of Health,
Social Services and Public Safety.

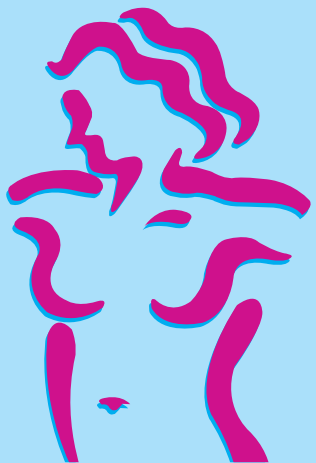
02/07

Breast screening



Satisfactory test results - what now?

Thank you for attending the breast assessment clinic. This leaflet is designed to answer some questions you may have about this stage in the breast screening process.



Why was I asked to attend for assessment?

One in every 20 women screened is invited to the breast assessment clinic for additional tests. Something was noticed on your breast x-ray which required further investigation. The doctor you have seen today will have explained in more detail why you were invited to attend.

What was the outcome of my visit today?

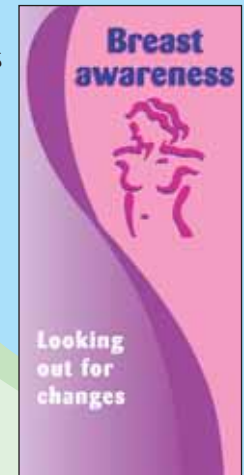
All the tests that have been carried out today are satisfactory.

What happens next?

You will continue to receive an invitation for breast screening every three years. If you are 65 or over you will no longer receive an invitation for breast screening, but if you still wish to be screened you can arrange this by contacting your local screening centre (see details overleaf).

What should I do between now and my next appointment?

It is important to check your breasts regularly so that you are aware of any change that may occur. Please read the *Breast awareness - Looking out for changes* leaflet.



What can I do if I notice any change in my breasts?

Please see your GP without delay. He/she may wish to refer you to a breast clinic.

If you have any further queries, please contact your breast care nurse:

Name:

Tel: