

Care Packages in Effect

Quarterly Figures

Care Packages in Effect, by Type

Table 1 provides an analysis of the number of care packages in effect, according to whether they were residential, nursing home or domiciliary packages. This table shows the figures for 30 June 2004, and includes comparisons with the position at the end of the previous quarter and the end of the corresponding quarter last year.

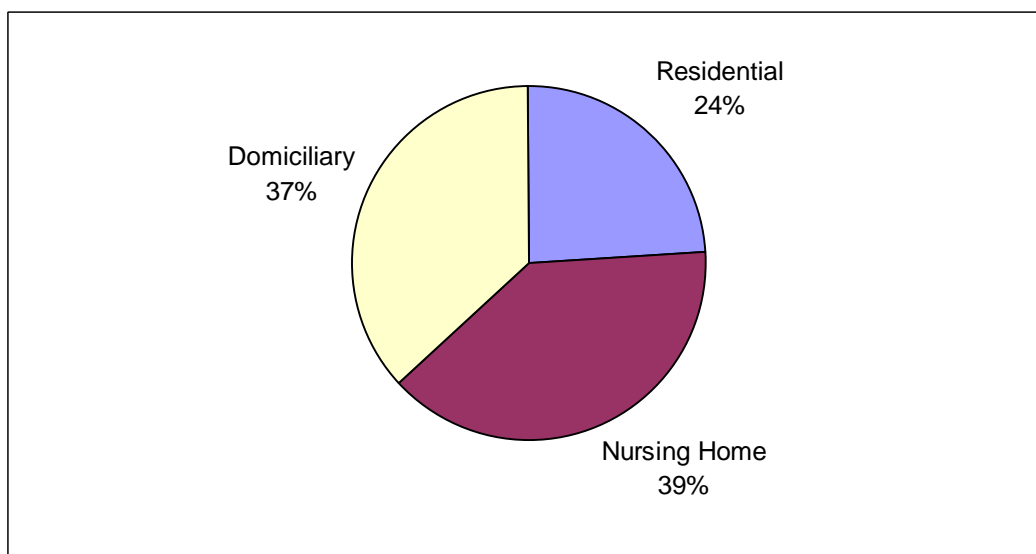
Table 1 Care Packages in Effect, by Type

Type	Quarter Ending			Quarterly Change	Annual Change
	June 04	March 04	June 03		
Residential	4,634	4,682	4,512	-48	+122
Nursing Home	7,388	7,292	7,381	+96	+7
Domiciliary	7,075	7,041	7,264	+34	-189
Total	19,097	19,015	19,157	+82	-60

Source: CC7

Figure 1 shows the proportions of types of care package in effect at 30 June 2004.

Figure 1 Care Packages in Effect, by Type, Quarter Ending June 2004



Source: CC7

The distribution according to sector of residential and nursing home packages in effect in the current quarter is shown in Table 2.

Table 2 Care Packages in Effect, by Type and Sector, Quarter Ending June 2004

Type	Sector			Total
	Statutory	Voluntary	Private	
Residential	1,479	1,015	2,140	4,634
Nursing Home	23	425	6,940	7,388

Source: CC7

Table 3 shows the breakdown of care packages in effect by Programme of Care, for the current quarter, previous quarter and corresponding quarter last year.

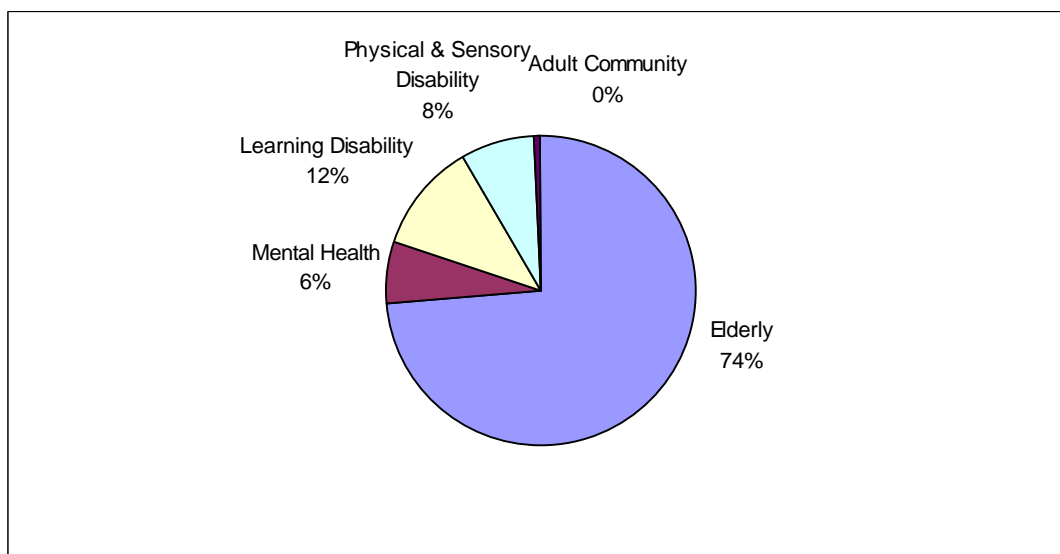
Table 3 Care Packages in Effect, by Programme of Care

POC	Quarter Ending			Quarterly Change	Annual Change
	June 04	March 04	June 03		
Elderly	14,039	14,016	14,274	+23	-235
Mental Health	1,213	1,179	1,124	+34	+89
Learning Disability	2,237	2,253	2,174	-16	+63
Physical & Sensory Disability	1,521	1,483	1,488	+38	+33
Adult Community	87	84	97	+3	-10
Total	19,097	19,015	19,157	+82	-60

Source: CC7

The percentage breakdown of care packages in effect at 30 June 2004, by Programme of Care, is shown in Figure 2.

Figure 2 Care Packages in Effect, by Programme of Care, June 2004



Source: CC7

Care Packages in Effect, by Trust

Table 4 shows the number of care packages in effect in each Health and Social Services Trust and Board area, for the position at 30 June 2004. Corresponding figures for the previous quarter and previous year are also shown.

Table 4 Care Packages in Effect, by Trust and Board, June 2004

Trust	Quarter Ending			Quarterly Change	Annual Change
	June 04	March 04	June 03		
Down Lisburn	1,908	1,854	1,863	+54	+45
North & West Belfast	2,315	2,288	2,149	+27	+166
South & East Belfast	1,940	1,896	2,019	+44	-79
Ulster	2,195	2,170	2,112	+25	+83
EHSSB	8,358	8,208	8,143	+150	+215
Causeway	1,247	1,369	1,258	-122	-11
Homefirst	2,898	2,862	3,242	+36	-344
NHSSB	4,145	4,231	4,500	-86	-355
Armagh & Dungannon	1,404	1,420	1,399	-16	+5
Craigavon & Banbridge	1,239	1,295	1,238	-56	+1
Newry & Mourne	1,062	1,079	1,104	-17	-42
SHSSB	3,705	3,794	3,741	-89	-36
Foyle	1,505	1,417	1,462	+88	+43
Sperrin Lakeland	1,384	1,365	1,311	+19	+73
WHSSB	2,889	2,782	2,773	+107	+116
Total	19,097	19,015	19,157	+82	-60

Source: CC7

The numbers of care packages in effect in each Trust and Board area at 30 June 2004, categorised by type, are shown in Table 5.

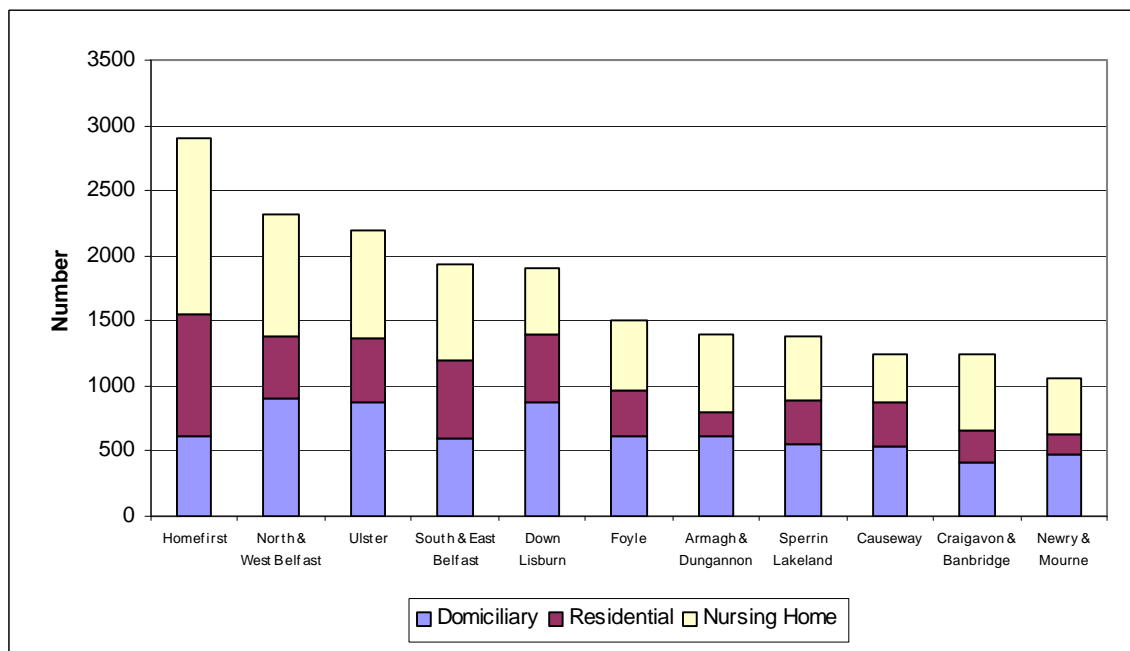
Table 5 Care Packages in Effect, by Trust, Board and Type, June 2004

Trust	Type			Total
	Residential	Nursing Home	Domiciliary	
Down Lisburn	521	510	877	1,908
North & West Belfast	480	926	909	2,315
South & East Belfast	596	740	604	1,940
Ulster	494	832	869	2,195
EHSSB	2,091	3,008	3,259	8,358
Causeway	329	379	539	1,247
Homefirst	941	1,346	611	2,898
NHSSB	1,270	1,725	1,150	4,145
Armagh & Dungannon	192	603	609	1,404
Craigavon & Banbridge	239	582	418	1,239
Newry & Mourne	154	437	471	1,062
SHSSB	585	1,622	1,498	3,705
Foyle	355	537	613	1,505
Sperrin Lakeland	333	496	555	1,384
WHSSB	688	1,033	1,168	2,889
Total	4,634	7,388	7,075	19,097

Source: CC7

Figure 3 shows the pattern of types of care package in effect at 30 June 2004, by Trust.

Figure 3 Care Packages in Effect, by Trust, Quarter Ending June 2004



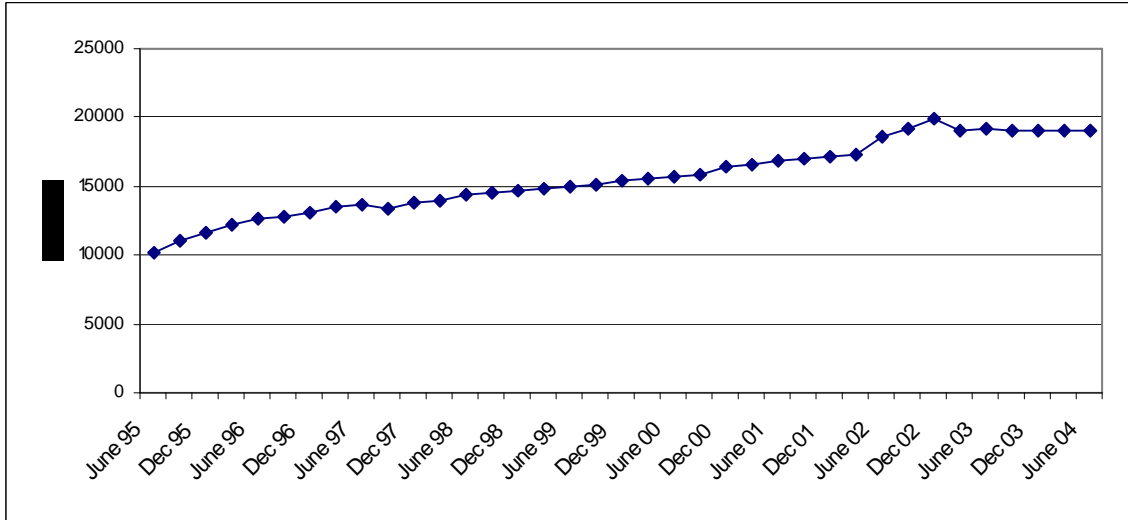
Source: CC7

Trends

Trends in Numbers of Care Packages in Effect

The numbers of care packages of effect have generally shown an increase from June 1995. The total number of care packages in effect increased by 87% over that period (Figure 4).

Figure 4 Care Packages in Effect, by Type, June 1995–June 2004

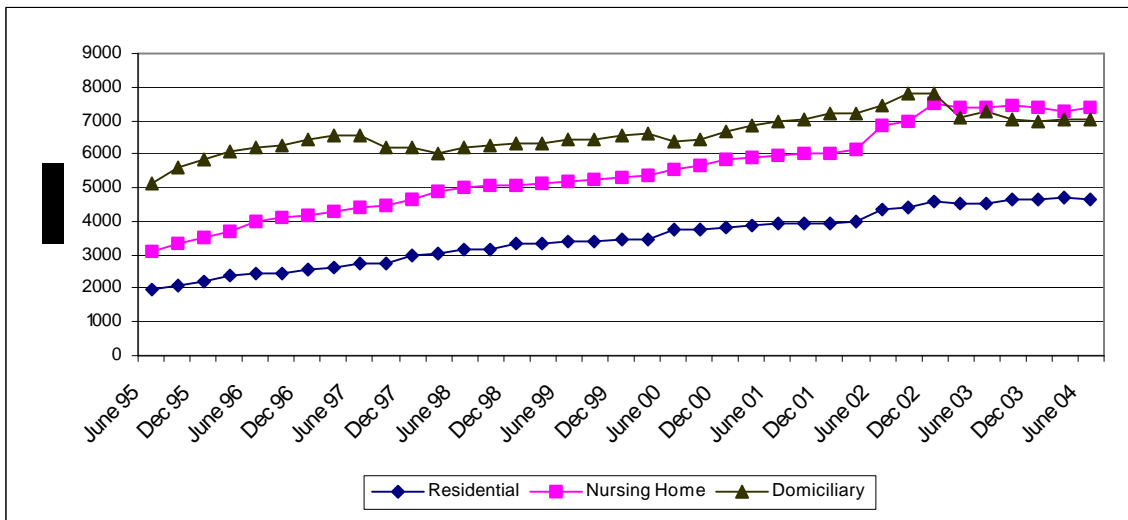


Source: CC7

Trends in Distribution of Care Packages in Effect

From June 1995 to the current quarter, there has been a general increase in the numbers of all types of care package. Until December 2002 the number of domiciliary packages was greater than the other types, since when there has been a slightly greater number of nursing home packages (Figure 5).

Figure 5 Trends in Distribution of Care Packages in Effect



Source: CC7