

Care Packages in Effect

Quarterly Figures

Care Packages in Effect, by Type

Table 1 provides an analysis of the number of care packages in effect, according to whether they were residential, nursing home or domiciliary packages. This table shows the figures for 31 March 2004, and includes comparisons with the position at the end of the previous quarter and the end of the corresponding quarter last year.

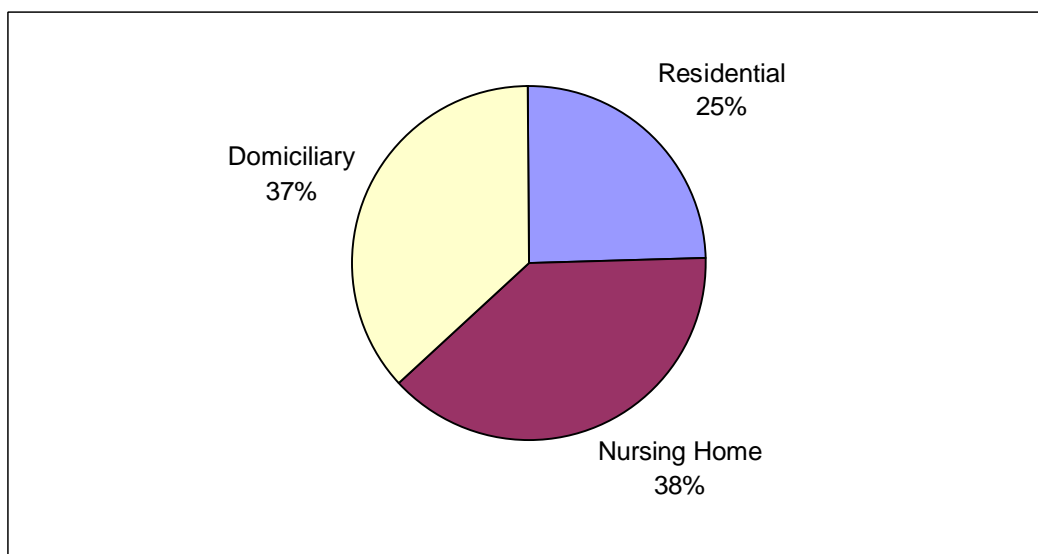
Table 1 Care Packages in Effect, by Type

Type	Quarter Ending			Quarterly Change	Annual Change
	March 04	Dec 03	March 03		
Residential	4,682	4,648	4,511	+34	+171
Nursing Home	7,292	7,364	7,382	-72	-90
Domiciliary	7,041	6,959	7,110	+82	-69
Total	19,015	18,971	19,003	+44	+12

Source: CC7

Figure 1 shows the proportions of types of care package in effect at 31 March 2004.

Figure 1 Care Packages in Effect, by Type, Quarter Ending March 2004



Source: CC7

The distribution according to sector of residential and nursing home packages in effect in the current quarter is shown in Table 2.

Table 2 Care Packages in Effect, by Type and Sector, Quarter Ending March 2004

Type	Sector			Total
	Statutory	Voluntary	Private	
Residential	1,479	1,006	2,197	4,682
Nursing Home	25	428	6,839	7,292

Source: CC7

Table 3 shows the breakdown of care packages in effect by Programme of Care, for the current quarter, previous quarter and corresponding quarter last year.

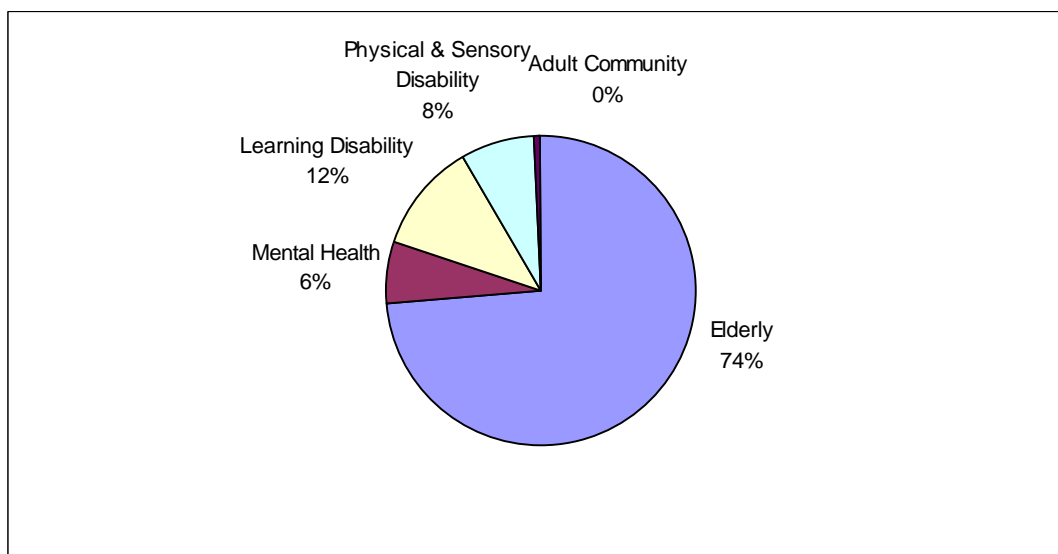
Table 3 Care Packages in Effect, by Programme of Care

POC	Quarter Ending			Quarterly Change	Annual Change
	March 04	Dec 03	March 03		
Elderly	14,016	13,965	14,157	+51	-141
Mental Health	1,179	1,227	1,169	-48	+10
Learning Disability	2,253	2,231	2,129	+22	+124
Physical & Sensory Disability	1,483	1,466	1,453	+17	+30
Adult Community	84	82	95	+2	-11
Total	19,015	18,971	19,003	+44	+12

Source: CC7

The percentage breakdown of care packages in effect at 31 March 2004, by Programme of Care, is shown in Figure 2.

Figure 2 Care Packages in Effect, by Programme of Care, March 2004



Source: CC7

Care Packages in Effect, by Trust

Table 4 shows the number of care packages in effect in each Health and Social Services Trust and Board area, for the position at 31 March 2004. Corresponding figures for the previous quarter and previous year are also shown.

Table 4 Care Packages in Effect, by Trust and Board, March 2004

Trust	Quarter Ending			Quarterly Change	Annual Change
	March 04	Dec 03	March 03		
Down Lisburn	1,854	1,907	1,836	-53	+18
North & West Belfast	2,288	2,292	2,145	-4	+143
South & East Belfast	1,896	1,947	2,058	-51	-162
Ulster	2,170	2,136	2,081	+34	+89
EHSSB	8,208	8,282	8,120	-74	+88
Causeway	1,369	1,329	1,185	+40	+184
Homefirst	2,862	2,849	3,153	+13	-291
NHSSB	4,231	4,178	4,338	+53	-107
Armagh & Dungannon	1,420	1,413	1,368	+7	+52
Craigavon & Banbridge	1,295	1,286	1,263	+9	+32
Newry & Mourne	1,079	1,084	1,133	-5	-54
SHSSB	3,794	3,783	3,764	+11	+30
Foyle	1,417	1,394	1,476	+23	-59
Sperrin Lakeland	1,365	1,334	1,305	+31	+60
WHSSB	2,782	2,728	2,781	+54	+1
Total	19,015	18,971	19,003	+44	+12

Source: CC7

The numbers of care packages in effect in each Trust and Board area at 31 March 2004, categorised by type, are shown in Table 5.

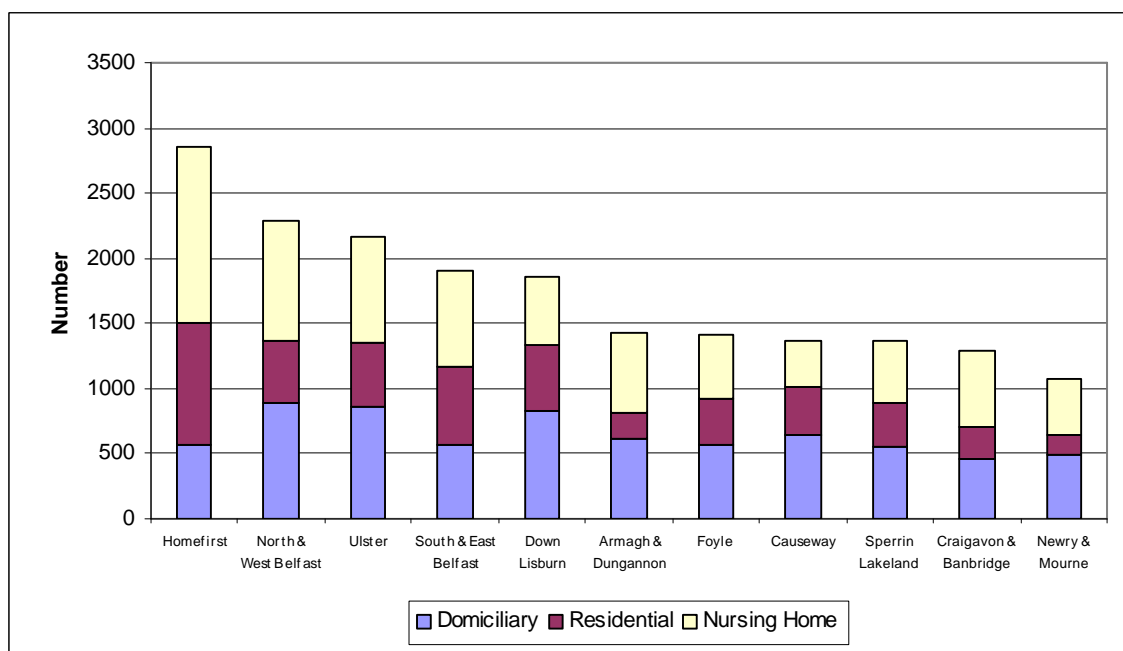
Table 5 Care Packages in Effect, by Trust, Board and Type, March 2004

Trust	Type			Total
	Residential	Nursing Home	Domiciliary	
Down Lisburn	508	512	834	1,854
North & West Belfast	484	915	889	2,288
South & East Belfast	599	723	574	1,896
Ulster	495	823	852	2,170
EHSSB	2,086	2,973	3,149	8,208
Causeway	367	355	647	1,369
Homefirst	931	1,356	575	2,862
NHSSB	1,298	1,711	1,222	4,231
Armagh & Dungannon	204	604	612	1,420
Craigavon & Banbridge	250	586	459	1,295
Newry & Mourne	160	435	484	1,079
SHSSB	614	1,625	1,555	3,794
Foyle	354	502	561	1,417
Sperrin Lakeland	330	481	554	1,365
WHSSB	684	983	1,115	2,782
Total	4,682	7,292	7,041	19,015

Source: CC7

Figure 3 shows the pattern of types of care package in effect at 31 March 2004, by Trust.

Figure 3 Care Packages in Effect, by Trust, Quarter Ending March 2004



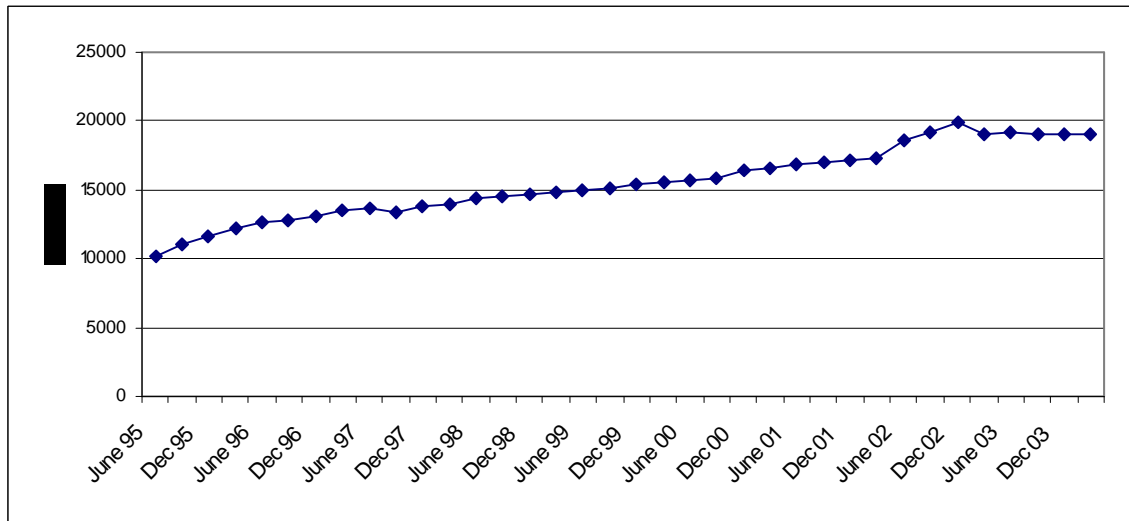
Source: CC7

Trends

Trends in Numbers of Care Packages in Effect

The numbers of care packages of effect have generally shown an increase from June 1995. The total number of care packages in effect increased by 86% over that period (Figure 4).

Figure 4 Care Packages in Effect, June 1995–March 2004

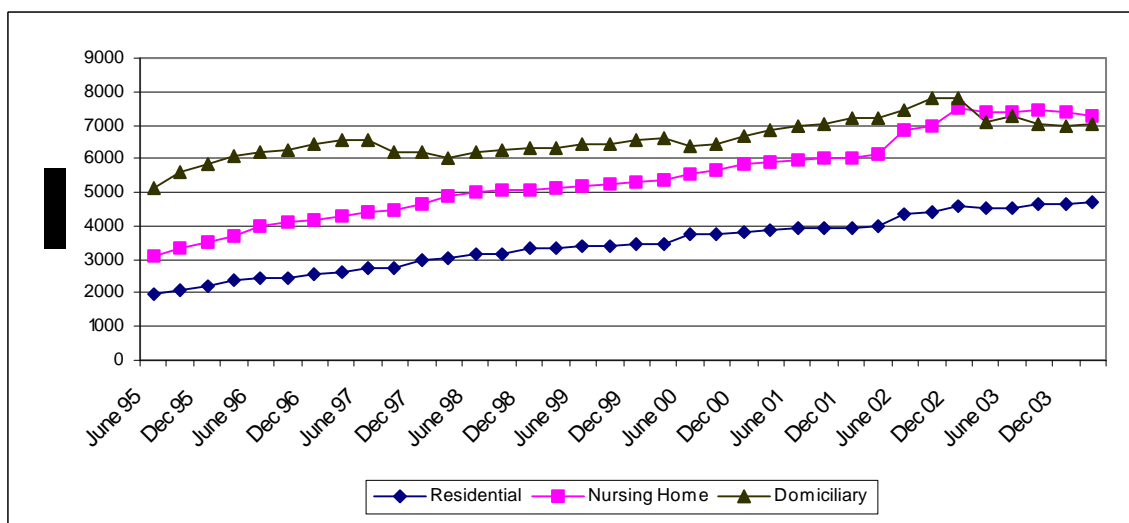


Source: CC7

Trends in Distribution of Care Packages in Effect

From June 1995 to the current quarter, there has been a general increase in the numbers of all types of care package. Until December 2002 the number of domiciliary packages was greater than the other types, since when there has been a slightly greater number of nursing home packages (Figure 5).

Figure 5 Trends in Distribution of Care Packages in Effect



Source: CC7