

Care Packages in Effect

Quarterly Figures

Care Packages in Effect, by Type

Table 1 provides an analysis of the number of care packages in effect, according to whether they were residential, nursing home or domiciliary packages. This table shows the figures for 30 September 2003, and includes comparisons with the position at the end of the previous quarter and the end of the corresponding quarter last year.

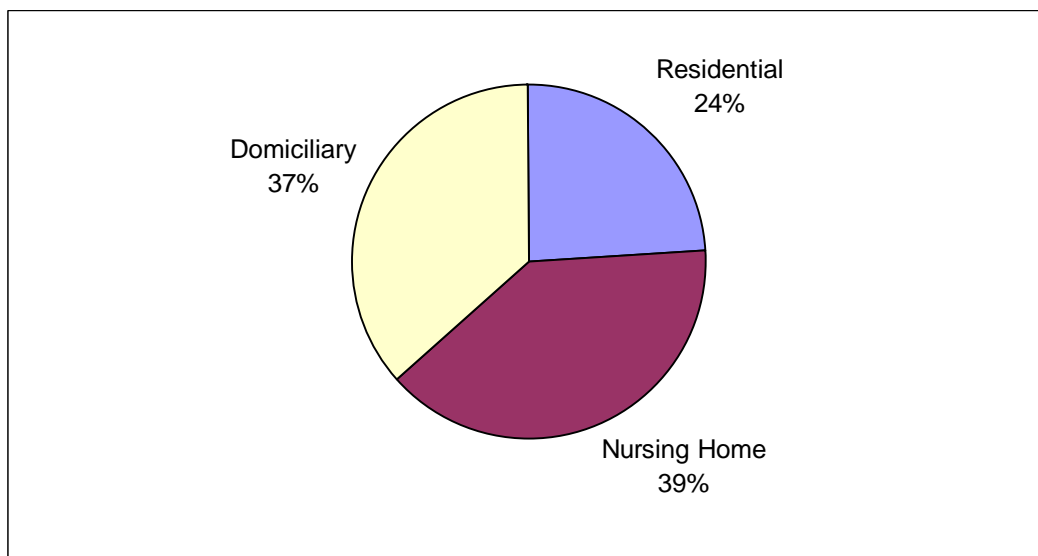
Table 1 Care Packages in Effect, by Type

Type	Quarter Ending			Quarterly Change	Annual Change
	Sept 03	June 03	Sept 02		
Residential	4,620	4,512	4,427	+108	+193
Nursing Home	7,448	7,381	6,996	+67	+452
Domiciliary	7,005	7,264	7,818	-259	-813
Total	19,073	19,157	19,241	-84	-168

Source: CC7

Figure 1 shows the proportions of types of care package in effect at 30 September 2003.

Figure 1 Care Packages in Effect, by Type, Quarter Ending September 2003



Source: CC7

The distribution according to sector of residential and nursing home packages in effect in the current quarter is shown in Table 2.

Table 2 Care Packages in Effect, by Type and Sector, Quarter Ending September 2003

Type	Sector			Total
	Statutory	Voluntary	Private	
Residential	1,485	989	2,146	4,620
Nursing Home	24	420	7,004	7,448

Source: CC7

Table 3 shows the breakdown of care packages in effect by Programme of Care, for the current quarter, previous quarter and corresponding quarter last year.

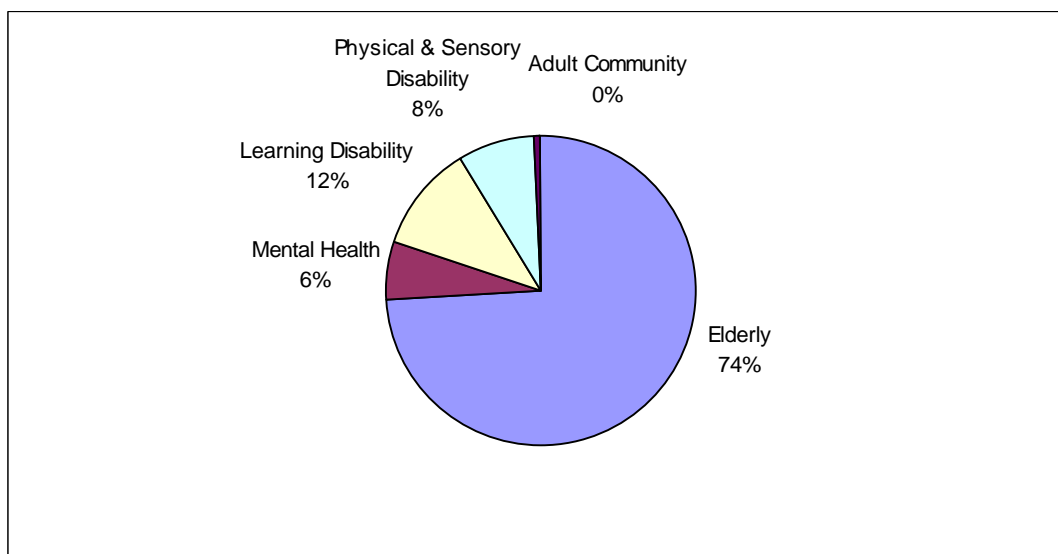
Table 3 Care Packages in Effect, by Programme of Care

POC	Quarter Ending			Quarterly Change	Annual Change
	Sept 03	June 03	Sept 02		
Elderly	14,094	14,274	14,321	-180	-227
Mental Health	1,164	1,124	1,197	+40	-33
Learning Disability	2,197	2,174	2,039	+23	+158
Physical & Sensory Disability	1,527	1,488	1,552	+39	-25
Adult Community	91	97	132	-6	-41
Total	19,073	19,157	19,241	-84	-168

Source: CC7

The percentage breakdown of care packages in effect at 30 September 2003, by Programme of Care, is shown in Figure 2.

Figure 2 Care Packages in Effect, by Programme of Care, September 2003



Source: CC7

Care Packages in Effect, by Trust

Table 4 shows the number of care packages in effect in each Health and Social Services Trust and Board area, for the position at 30 September 2003. Corresponding figures for the previous quarter and previous year are also shown.

Table 4 Care Packages in Effect, by Trust and Board, September 2003

Trust	Quarter Ending			Quarterly Change	Annual Change
	Sept 03	June 03	Sept 02		
Down Lisburn	1,902	1,863	1,746	+39	+156
North & West Belfast	2,284	2,149	2,026	+135	+258
South & East Belfast	1,946	2,019	2,108	-73	-162
Ulster	2,161	2,112	1,884	+49	+277
EHSSB	8,293	8,143	7,764	+150	+529
Causeway	1,247	1,258	1,833	-11	-586
Homefirst	2,950	3,242	3,094	-292	-144
NHSSB	4,197	4,500	4,927	-303	-730
Armagh & Dungannon	1,404	1,399	1,408	+5	-4
Craigavon & Banbridge	1,267	1,238	1,339	+29	-72
Newry & Mourne	1,121	1,104	1,128	+17	-7
SHSSB	3,792	3,741	3,875	+51	-83
Foyle	1,465	1,462	1,434	+3	+31
Sperrin Lakeland	1,326	1,311	1,241	+15	+85
WHSSB	2,791	2,773	2,675	+18	+116
Total	19,073	19,157	19,241	-84	-168

Source: CC7

The numbers of care packages in effect in each Trust and Board area at 30 September 2003, categorised by type, are shown in Table 5.

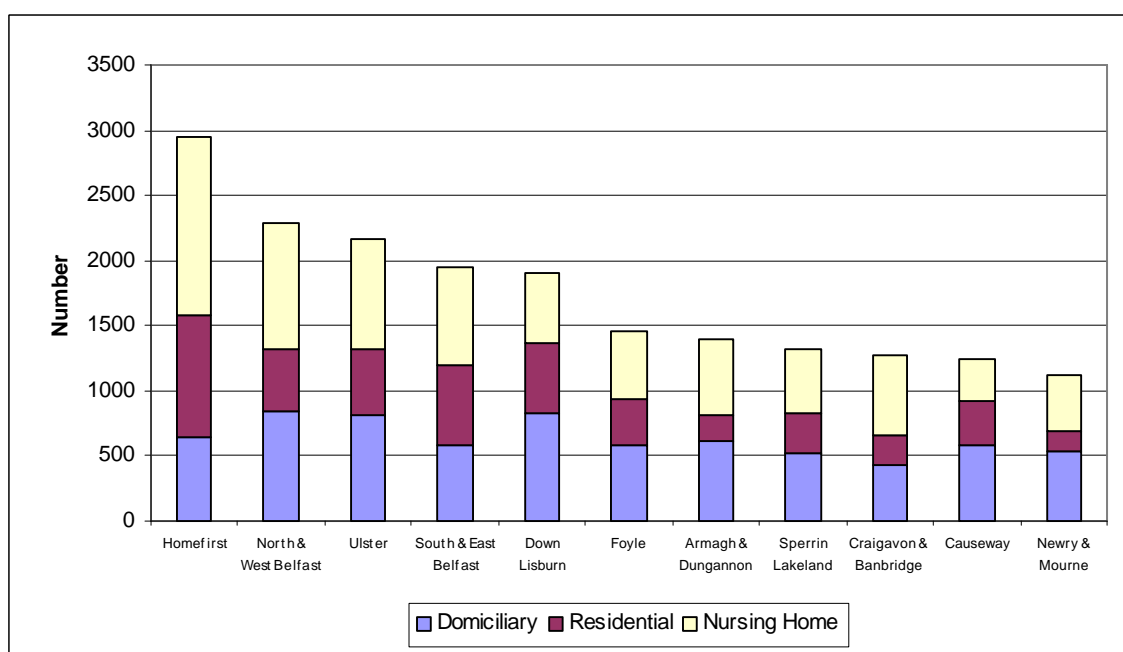
Table 5 Care Packages in Effect, by Trust, Board and Type, September 2003

Trust	Type			Total
	Residential	Nursing Home	Domiciliary	
Down Lisburn	525	541	836	1,902
North & West Belfast	469	965	850	2,284
South & East Belfast	620	749	577	1,946
Ulster	500	844	817	2,161
EHSSB	2,114	3,099	3,080	8,293
Causeway	327	332	588	1,247
Homefirst	937	1,372	641	2,950
NHSSB	1,264	1,704	1,229	4,197
Armagh & Dungannon	200	588	616	1,404
Craigavon & Banbridge	233	604	430	1,267
Newry & Mourne	158	423	540	1,121
SHSSB	591	1,615	1,586	3,792
Foyle	355	528	582	1,465
Sperrin Lakeland	296	502	528	1,326
WHSSB	651	1,030	1,110	2,791
Total	4,620	7,448	7,005	19,073

Source: CC7

Figure 3 shows the pattern of types of care package in effect at 30 September 2003, by Trust.

Figure 3 Care Packages in Effect, by Trust, Quarter Ending September 2003



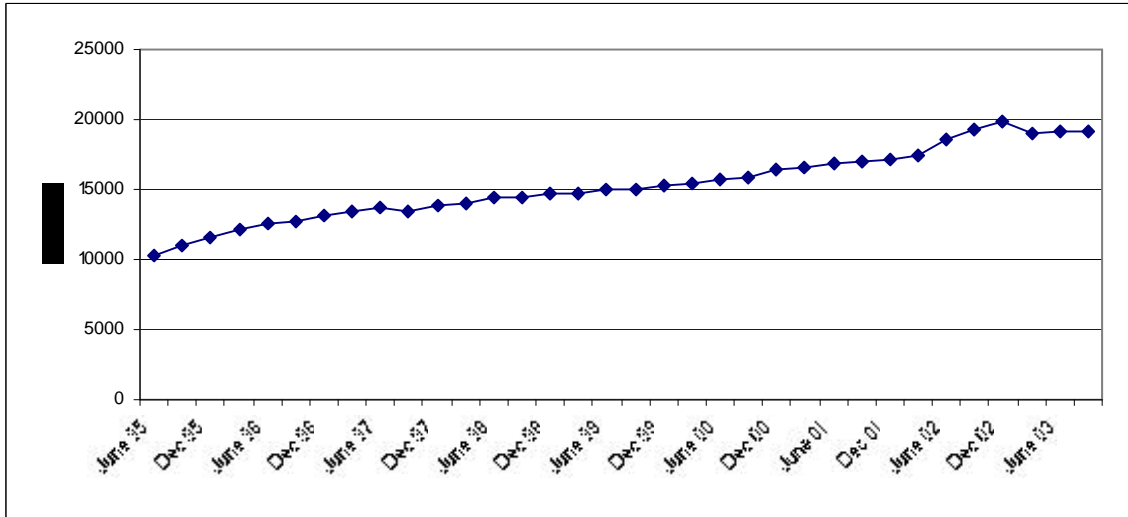
Source: CC7

Trends

Trends in Numbers of Care Packages in Effect

The numbers of care packages of effect have generally shown an increase from June 1995. The total number of care packages in effect increased by 86% over that period (Figure 4).

Figure 4 Care Packages in Effect, by Type, June 1995–September 2003

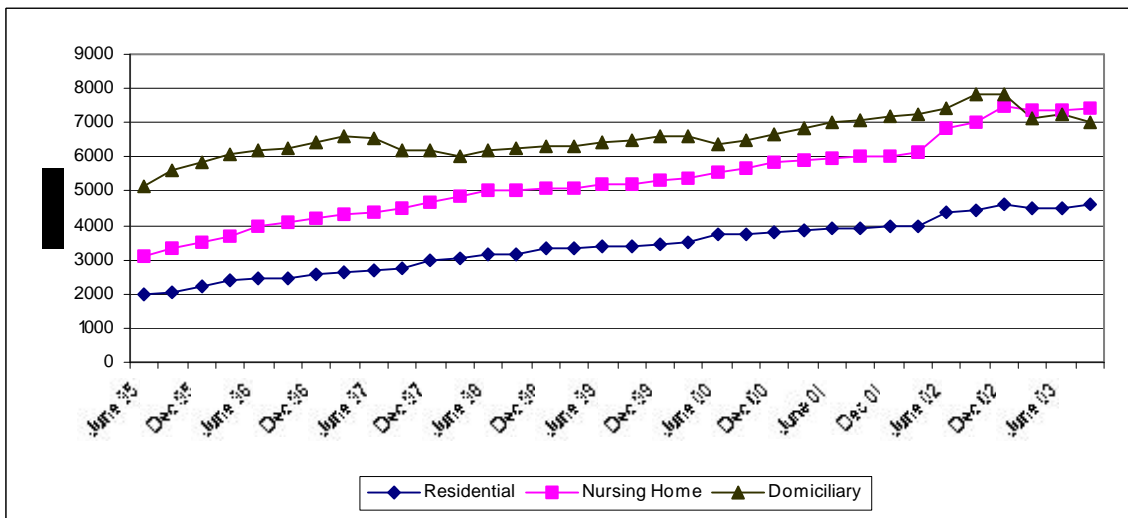


Source: CC7

Trends in Distribution of Care Packages in Effect

From June 1995 to the current quarter, there has been a general increase in the numbers of all types of care package. Until December 2002 the number of domiciliary packages was greater than the other types, since when there has been a slightly greater number of nursing home packages (Figure 5).

Figure 5 Trends in Distribution of Care Packages in Effect



Source: CC7