

# Children Order Statistical Trends for Northern Ireland

## 2004/05 to 2009/10

This bulletin presents children's social care activity trends for Northern Ireland and Health and Social Care Trusts, for the period from 1 April 2004 to 31 March 2010; areas covered include Child Protection, Looked After Children, and Children in Need. Figures are based on annual Children Order statistical returns provided by HSC Trusts to the DHSSPS. The companion publication to this is, 'Children Order Statistical Tables for Northern Ireland 2009/10'.

### Summary Key Findings

#### Child Protection

1. Between 2005 and 2010, the number of children on the Child Protection Register has increased by 48% (764), from 1,593 to 2,357, respectively;
2. Registrations increased by 64% (717) from 1,129 in 2004/05 to 1,846 in 2009/10;
3. De-Registrations more than doubled from 940 in 2005 to 1,947 in 2010;

#### Looked After Children

4. At 31 March 2010, there were 2,606 looked after children, up by 6% (143) from 2009, and 3% (75) since 2005;
5. In recent years, the proportion of looked after children in care for three years or more, fell from 55% in 2007 to 46% in 2010;
6. The number of children in foster care has increased by 5% (80), from 1,607 in 2008/09 to 1,687 in 2009/10; this compares with a 7% (21) fall in children residential care during the same period;

#### Children in Need

7. During 2009/10, 31,693 referrals were made to children's services in Northern Ireland, having increased by 11% (3,253) and 19% (5,070) from 2009 and 2005, respectively;
8. 23,807 children were referred during 2009/10, an increase of 36% (6,309) since 2005 and of 6% (1,427) since 2009.

#### Theme

Children Order Statistical Trends for Northern Ireland 2004/05 to 2009/10

#### Issued by

Community Information Branch,  
 Information & Analysis Directorate,  
 Department of Health,  
 Social Services & Public Safety,  
 Stormont Estate,  
 Belfast, BT4 3SQ

#### Statistician

Iain Waugh  
 (028) 90520599

#### E-mail

[cib@dhsspsni.gov.uk](mailto:cib@dhsspsni.gov.uk)

#### Internet

[http://www.dhsspsni.gov.uk/index/stats\\_research/stats-cib-3/statistics\\_and\\_research-cib-pub/children\\_statistics.htm](http://www.dhsspsni.gov.uk/index/stats_research/stats-cib-3/statistics_and_research-cib-pub/children_statistics.htm)

Contents	Page
Reader Information	2
About CIB	3
List of Tables	4
List of Figures	5
Technical Notes	6
Key Findings	9
Child Protection	11
Looked After Children	22
Children in Need	32
Children's Homes	35
Readership Survey	37
Appendices	39
Additional Information	55

## Reader Information

Document Purpose	For information
Authors	Manny Fitzpatrick, Iain Waugh
Publication Date	27 May 2011
Target Audience	Social Services Directors, Directors of Children's Services, Chief Executives of HSC Board and Trusts in Northern Ireland, health care professionals, academics and social care stakeholders.
Further copies from	CIB@dhsspsni.gov.uk
Copyright	This publication is Crown copyright and may be reproduced free of charge in any format or medium. Any material used must be acknowledged, and the title of the publication specified.
Internet address	<a href="http://www.dhsspsni.gov.uk/index/stats_research/stats-cib-3/statistics_and_research-cib-ub/children_statistics.htm">http://www.dhsspsni.gov.uk/index/stats_research/stats-cib-3/statistics_and_research-cib-ub/children_statistics.htm</a>
Price	FREE

## About CIB

The purpose of Community Information Branch is to promote effective decision making in children and adult social services by providing quality information and analysis. We collect, analyse and disseminate a wide range of community information that is used to help monitor the delivery of personal social services policy. Information collected by CIB is used to assess Trust performance, for corporate monitoring, policy evaluation, and to respond to parliamentary / assembly questions. Information is widely disseminated through a number of regular key statistical publications and ad hoc reports, details of which are available by clicking on the link below.

[http://www.dhsspsni.gov.uk/index/stats\\_research/stats-cib-3/statistics\\_and\\_research-cib-pub/children\\_statistics.htm](http://www.dhsspsni.gov.uk/index/stats_research/stats-cib-3/statistics_and_research-cib-pub/children_statistics.htm)

## Our Vision and Values

Community Information Branch aims to:

- provide up-to-date, quality information on children and adult social services and community health;
- disseminate findings widely with a view to stimulating debate, promoting effective decision-making and improvement in service provision; and
- be an expert voice on social care information.

## List of Tables

	Page	
Table 1.1	Child Protection Investigations during year ended 31 March (2005 – 2010)	11
Table 1.2	Composition of the Child Protection Register by age and gender at 31 March 2010	12
Table 1.3	Composition of the Child Protection Register by age at 31 March (2005 – 2010)	13
Table 1.4	Composition of the Child Protection Register by category of abuse at 31 March 2010	14
Table 1.5	Composition of the Child Protection Register by category of abuse at 31 March (2006 – 2010)	16
Table 1.6	Composition of the Child Protection Register by length of time on the register and age at 31 March 2010	17
Table 1.7	Composition of the Child Protection Register by length of time on the register at 31 March (2006 – 2010)	18
Table 1.8	Child Protection Registrations by gender and age during the year ended 31 March 2010	19
Table 1.9	Child Protection Registrations by age during year ended 31 March (2005 – 2010)	20
Table 1.10	Child Protection De-registrations during year ended 31 March (2005 – 2010)	21
Table 2.1	Composition of Looked After Children population by age and gender at 31 March 2010	22
Table 2.2	Composition of Looked After Children population by age at 31 March (2005 – 2010)	23
Table 2.3	Legal Status of Looked After Children population by gender at 31 March 2010	24
Table 2.4	Legal Status of Looked After Children population at 31 March (2005 – 2010)	25
Table 2.5	Placement of Looked After Children at 31 March (2005 – 2010)	26
Table 2.6	Length of time in care by age at 31 March 2010	27
Table 2.7	Length of time in care at 31 March (2005 – 2010)	28
Table 2.8	Respite care by placement type and age during year ended 31 March 2010	29
Table 2.9	Children who received respite care services by placement type for years ended 31 March (2005 – 2010)	30
Table 2.10	Discharges from care by length of time in care and age during year ended 31 March 2010	31
Table 3.1	Number of Referrals, Episodes and Children Referred during years ended 31 March (2005 – 2010)	32
Table 3.2	Composition of Children in Need population by age and gender at 31 March 2010	33
Table 3.3	Composition of Children in Need population by age at 31 March (2005 – 2010)	34
Table 4.1	Children’s statutory residential homes at 19 August 2010	35
Table 4.2	Children’s independent residential homes at 19 August 2010	36

## List of Figures

Figure 1.1	Composition of the Child Protection Register by age and gender at 31 <sup>st</sup> March 2010	Page 12
Figure 1.2	Composition of the Child Protection Register by category of abuse at 31 <sup>st</sup> March (2005 – 2010)	15
Figure 1.3	Length of time on the Child Protection Register at 31 <sup>st</sup> March 2010	17
Figure 1.4	Child Protection Registrations by age during year ended 31 <sup>st</sup> March 2010	19
Figure 1.5	Child Protection Registrations during year ended 31 <sup>st</sup> March (2005 – 2010)	20
Figure 1.6	Child Protection De-registrations during year ended 31 March (2005 – 2010)	21
Figure 2.1	Looked After Children population by age 31 <sup>st</sup> March 2010	22
Figure 2.2	Looked After Children at 31 March (2005 – 2010)	23
Figure 2.3	Looked After Children by legal status at 31 <sup>st</sup> March 2010	24
Figure 2.4	Looked After Children by placement type at 31 <sup>st</sup> March 2010	26
Figure 2.5	Looked After Children by length of time in care at 31 <sup>st</sup> March 2010	27
Figure 2.6	Respite placements by type during 2009/10	30
Figure 3.1	Referrals and Children Referred during years ended 31 March (2005 – 2010)	32
Figure 3.2	Children referred by age at 31 March 2010	33
Figure 3.3	Children Referred for years ended 31 March (2005 – 2010)	34
Figure 4.1	Places in children's statutory residential homes by HSC Trust at 19 <sup>th</sup> August 2010	36

## Technical Notes

### Data Collection

The information presented in this bulletin derives from Children Order statistical returns provided by each of the five Health and Social Care Trusts in Northern Ireland to Community Information Branch in the Department of Health, Social Services & Public Safety.

Children Order returns are aggregated statistical counts relating to Child Protection, Children in Need, Looked After Children and Day Care provision for children. Figures presented in the present bulletin relate to Child Protection, Looked After Children and Children in Need for the period 2004/05 to 2009/10, and breakdowns are available, for example, by age, gender.

Information on Children's Homes was provided by the Regulation and Quality Improvement Authority for Northern Ireland, who are responsible for the registration and inspection of these types of facility.

The 'Children Order Statistical Trends for Northern Ireland' together with its companion publication the 'Children Order Statistical Tables for Northern Ireland' presents a comprehensive series of data on the Children Order in Northern Ireland.

### Data Quality

To ensure Children Order returns are accurate, HSC Trusts have six weeks to update SOS CARE with relevant information. When returns are received by Community Information Branch, checks are carried out to verify that information is consistent both within and across returns. Trend analyses are used to monitor annual variations and emerging trends. Queries arising from validation checks are presented to HSC Trusts for clarification and if required returns may be amended and/or re-submitted.

Children in Need figures; there is a difference between data for Tables 3.1 and 3.2; information for these tables is taken from Children Order returns N1 and N2, respectively. Table 3.1 gives a figure based on the date a child was referred to Social Services, while Table 3.2 gives a figure based on the date a child's needs have been assessed. The difference between these figures is due to the fact that a referred child may not have their needs assessed before 31 March of the given year. Counts of children in need for some Trusts exclude children whose details are not recorded on SOS CARE.

Planned changes to SOS CARE will facilitate the future accurate recording of placement types for looked after children.

A detailed quality report for children's community statistics is available on our website at:

[http://www.dhsspsni.gov.uk/quality\\_report\\_for\\_childrens\\_statistics-3.pdf](http://www.dhsspsni.gov.uk/quality_report_for_childrens_statistics-3.pdf)

## **Statement of Administrative Sources**

Children Order returns are derived from SOS CARE, which is the main administrative system used to support HSC Trusts in delivering social care services to children. A detailed 'Statement of Administrative Sources' is available on our website at:

[http://www.dhsspsni.gov.uk/cib\\_statement\\_of\\_administrative\\_sources.pdf](http://www.dhsspsni.gov.uk/cib_statement_of_administrative_sources.pdf)

## **Disclosure Conventions**

To prevent disclosure of the identity of individual children it has been necessary to suppress figures whenever it would be possible to calculate the value of a cell with a low count by means of simple arithmetic. Our policy statement on disclosure and confidentiality is available on our website at:

[http://www.dhsspsni.gov.uk/cib\\_confidentiality\\_statement.pdf](http://www.dhsspsni.gov.uk/cib_confidentiality_statement.pdf)

## **Rounding Conventions**

Percentages have been rounded to whole numbers and as a consequence some percentages may not sum to 100. 0% may reflect rounding down of values under 0.5%

## **Data Changes**

Children in Need statistics had historically been excluded from this bulletin. This issue had been addressed, with Children in Need data included in this publication.

## **Revisions Policy**

These data are revised by exception. If this occurs the circumstances of the revision are reported on our website and the dates figures are revised are noted both on the website and within the publication. The full revisions policy for these and other community statistics is published on our website at:

[http://www.dhsspsni.gov.uk/cib\\_revisions\\_policy.pdf](http://www.dhsspsni.gov.uk/cib_revisions_policy.pdf)

## **Main Uses of Data**

Data from these publications meet the information needs of a wide range of internal and external users. Within DHSSPS figures from Children Order publications are used by policy officials to monitor the volume of activity, Inter Agency working and reasons for referrals, and to compare the changing characteristics of Looked After Children and children on the Child Protection Register over time.

## **Related Publications**

Details of statistics on similar themes to those detailed within this bulletin and published by other countries in the United Kingdom are outlined below.

### **England**

Children Looked After in England (including adoption and care leavers) year ending 31 March 2010

<http://www.education.gov.uk/rsgateway/DB/SFR/s000960/index.shtml?format=print>

Referrals, assessment and children and young people who are the subject of a child protection plan, England - Year ending 31 March 2010

<http://www.education.gov.uk/rsgateway/DB/STR/d000959/index.shtml>

Children in Need in England, including their characteristics, and further information on children who were subject of a child protection plan – Year ending 31 March 2010

<http://www.education.gov.uk/rsgateway/DB/STR/d000970/index.shtml>

## **Wales**

Adoptions, Outcomes and Placements for Children Looked After by Local Authorities: Year Ending 31 March 2010 - Wales

<http://wales.gov.uk/topics/statistics/headlines/health2010/100916/?lang=en>

Referrals, Assessments and Social Services for Children, 2009-10

<http://wales.gov.uk/topics/statistics/headlines/health2010/100922/?lang=en>

## **Scotland**

Child Safety and Wellbeing - Children Looked After - Scotland

<http://www.scotland.gov.uk/Topics/Statistics/Browse/Children/TrendLookedAfter>

Child Safety and Wellbeing - Child Protection – Scotland

<http://www.scotland.gov.uk/Topics/Statistics/Browse/Children/TrendChildProtection>

## **A National Statistics Publication**

The United Kingdom Statistics Authority has designated these statistics as National Statistics, in accordance with the Statistics and Registration Services Act 2007 and signifying compliance with the Code of Practice for Official Statistics.

Designation can be broadly interpreted to mean that the statistics:

- meet identified user needs;
- are well explained and readily accessible;
- are produced according to sound methods; and
- are managed impartially and objectively in the public interest;

Once statistics have been designated as National Statistics it is a statutory requirement that the Code of Practice shall continue to be observed.

If you have any comments on this publication please complete our questionnaire at the following link:

[http://www.dhsspsni.gov.uk/index/stats\\_research/stats-cib-3/statistics\\_and\\_research-user\\_engagement/cib-questionnaire.htm](http://www.dhsspsni.gov.uk/index/stats_research/stats-cib-3/statistics_and_research-user_engagement/cib-questionnaire.htm)

or contact.

Iain Waugh  
iain.waugh@dhsspsni.gov.uk  
Tel: 028 905 20599

## Key Findings

### **Child Protection**

- The numbers of children on the Child Protection Register increased by 48% (764), from 1,593 in 2005 to 2,357 in 2010; more recently, the register count dropped by 5% (131) between 2009 and 2010, from 2,488 to 2,357. respectively;
- The age profile of children on the register has remained relatively constant over the five years to 2010, showing a 4 percentage points drop in children aged '5-11', which fell from 40% in 2005 to 36% in 2010;
- In the years from 2006 to 2010, there has been little change in the profile of children by length of time on the Register;
- Since 2006, the proportion of children on the Register due to a combination of Sexual/Emotional/Physical Abuse and Neglect increased by 8 percentage points, from 16% in 2006 to 24% in 2010;
- Between 2006 and 2010, the proportion of children Registered due to 'Neglect (only)' decreased by 7 percentage points, from 36% (582) to 29% (682); in the same period, Physical Abuse increased by 7 percentage points, from 20% (323) in 2006 to 27% (627) in 2010;
- Child Protection Investigations increased by 69% (1,387), from 2,000 in 2004/05 to 3,387 in 2009/10; more recently, they increased by 19% (531) from 2,856 in 2008/09, with Joint Protocol Investigations (Social Services with the PSNI) up 26%, from 572 to 723, during the same period;
- Child Protection Registrations from 2004/05 to 2009/10 rose by 64% (717), from 1,129 to 1,846 respectively; increasing by 1% (17) more recently to 1,846 in 2009/10 ;
- Child Protection De-Registrations in the five years from 2004/05 to 2009/10, more than doubled from 940 to 1,947, respectively; increasing by 39% (543) from 2008/09 to 2009/10;

### **Looked After Children**

- At 31 March 2010, there were 2,606 looked after children in Northern Ireland, an increase of 6% (143) from 2009, and 3% (75) from 2005; the numbers of looked after children has increased annually from 2,356 in 2007 to 2,606 in 2010, a rise of almost 11% (250) during this three year period;
- The age profile of looked after children from 2005 to 2010, indicates a small increase in the proportion of children aged '1- 4', which rose by 3 percentage points from 14% to 17%, respectively;
- For the five years from 2005 to 2010, the proportion of children subject to 'Care Orders (Articles 50 & 59)' increased by 5 percentage points from 40% (1,013) in 2005 to 45% (1,159) in 2010; for the same period, children subject to 'Deemed Care Order (Paras. 11 & 30)' fell by 12 percentage points from 14% (357) to 2% (64); since 2005, the proportion of children 'Accommodated under Article 21' increased by 6 percentage points from 31% (794) in 2005 to 37% (963) in 2010;

- In recent years, children in care for three years or more fell from 55% in 2007 to 46% in 2010;
- At 31 March 2010, 65% (1,687) of looked after children were in foster care, with 19% (483) in family placements, 11% (287) in residential care, and 6% in 'Other' placement types;
- Residential Care placements decreased 7% (21) from 308 in 2009 to 287 in 2010, compared with an increases of 84% (68) and 5% (80) in placements in 'Other Accommodation' and Foster Care respectively;
- Between 2005 and 2010, there has been little change in the profile of looked after children in terms of length of time in care, with a drop of 5 percentage points in the proportions of children in care for three years or more, which fell from 51% to 46% during this period;
- Of 739 respite placements in 2009/10, 77% (568) were foster care, 15% (108) were residential care, 7% (52) were family placements, and 2% (12) were 'Other' placement types;
- Since 2005, respite foster care placements increased by 16 percentage points to 77% in 2010; during this period, proportions in residential and family placements fell by 3 and 9 percentage points to 15% and 7%, respectively;

### **Children in Need**

- During 2009/10, 31,693 referrals were made to children's services in Northern Ireland, having increased by 11% (3,253) and 19% (5,070), from 2009 and 2005, respectively;
- Of 23,926 children referred to children's services in 2009/10, 23,807 (99%) were assessed as children in need; figures for children in need have risen by 36% (6,309) from 2005, and by 6% (1,427) since 2009;
- Analyses of children in need by age for 2010, indicate 35% (8,320) were aged '5–11', 30% (7,053) '0–4', 24% (5,675) were '12–15', and 12% (2,759) were aged 16 and over; the proportion of children in need aged '0–4', has increased by 4 percentage points since 2007, from 26% (5,629) to 30% (7,053) in 2010. For the same period, the proportion of children aged 12–15 dropped 3 percentage points, from 27% (5,665) to 24% (5,675);

# Child Protection

## Child Protection Investigations

Child Protection Investigations are classified using one of the following categories:

- Joint Protocol<sup>1</sup>
- Social Workers
- PSNI

**Table 1.1: Child Protection Investigations completed during year ended 31 March (2005–2010)**

Investigation category	2005		2006		2007		2008		2009		2010	
	No.	%	No.	%	No.	%	%	%	No.	%	No.	%
Joint Protocol	381	19	293	14	316	14	362	16	572	20	723	21
Social workers	1,592	80	1,811	85	1,966	85	1,905	83	2,231	78	2,620	77
Police	27	1	25	1	38	2	39	2	53	2	44	1
<b>Total</b>	<b>2,000</b>	<b>100</b>	<b>2,129</b>	<b>100</b>	<b>2,320</b>	<b>100</b>	<b>2,306</b>	<b>100</b>	<b>2,856</b>	<b>100</b>	<b>3,387</b>	<b>100</b>

### Main Points

- Of the 3,387 Child Protection Investigations in 2009/10, 21% were Joint Protocol (Social Services and PSNI);
- Investigations have increased by 19% (531) from 2,856 in 2008/09 to 3,387 in 2009/10, with Joint Protocol Investigations up by 26% in the same period, from 572 to 723 respectively;
- Between 2004/05 and 2009/10, Child Protection Investigations increased by 69% (1,387), from 2,000 to 3,387 respectively;

<sup>1</sup> Joint Protocol Investigations are carried out jointly by social workers and the PSNI.

## The Child Protection Register

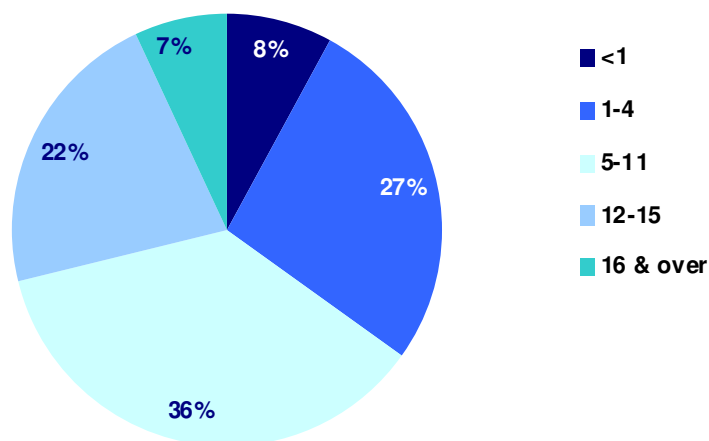
**Table 1.2: Composition of the Child Protection Register by age and gender at 31 March 2010**

Age Group (years)	Boys		Girls		Total	
	No.	%	No.	%	No.	%
<1	107	9	89	8	196	8
1-4	325	27	300	26	625	27
5-11	452	38	406	35	858	36
12-15	246	21	261	22	507	22
16 & over	65	5	106	9	171	7
<b>Total</b>	<b>1,195</b>	<b>100</b>	<b>1,162</b>	<b>100</b>	<b>2,357</b>	<b>100</b>

### Main Points

- At 31 March 2010, there were 2,357 children on Child Protection Registers in Northern Ireland, a decrease of 5% (131) from 2009 (2,488);
- Of the 2,357 children on Child Protection Registers, 51% were boys and 49% were girls;
- 8% were under 1 year old, and 7% were 16 or older;
- Almost two-fifths (36%) of children on the Register were aged 5-11

**Figure 1.1: Composition of the Child Protection Register by age at 31 March 2010**



**Table 1.3: Composition of the Child Protection Register by age at 31 March (2005–2010)**

Age Group (years)	2005		2006		2007		2008		2009		2010	
	No.	%	No.	%	No.	%	No.	%	No.	%	No.	%
<1	143	9	145	9	148	8	167	8	176	7	196	8
1-4	380	24	434	26	449	25	525	25	590	24	625	27
5-11	644	40	623	38	656	36	751	36	951	38	858	36
12-15	349	22	344	21	423	23	484	23	596	24	507	22
16 & over	77	5	93	6	129	7	144	7	175	7	171	7
<b>Total</b>	<b>1,593</b>	<b>100</b>	<b>1,639</b>	<b>100</b>	<b>1,805</b>	<b>100</b>	<b>2,071</b>	<b>100</b>	<b>2,488</b>	<b>100</b>	<b>2,357</b>	<b>100</b>

#### **Main Points**

- From 2009 to 2010, numbers on the Register in age bands 5-11 and 12-15 decreased by 10% (93) and 15% (89) respectively;
- Within these age bands, the numbers of girls decreased by 11% and 16% respectively, compared with decreases of 9% and 14% for boys;
- Between 2005 and 2010, the number of children on the Register increased by 48%, (764) from 1,593 to 2,357 respectively;
- The age profile of children on the register has remained relatively unchanged, with a 4 percentage point decrease in the numbers of children aged 5-11, from 40% in 2005 to 36% in 2010;

## Category of Abuse

The category of abuse under which each child is considered to be at risk is decided at the Child Protection Case Conference. When agreement is reached that the child is at risk and protection is necessary, each child is recorded under the category that best reflects the nature of the risk.

The four main categories used are: neglect, physical abuse, sexual abuse and emotional abuse. For more complex cases mixed categories are used e.g. 'neglect and physical abuse' or 'physical and sexual abuse'.

### Neglect:

The actual or likely persistent or severe neglect of a child, or the failure to protect a child from exposure to any kind of danger, including cold and starvation, or persistent failure to carry out important aspects of care, resulting in significant impairment of the child's health or development, including non-organic failure to thrive.

### Physical Abuse:

Actual or likely deliberate physical injury to a child, or wilful or neglectful failure to prevent physical injury or suffering to a child including deliberate poisoning, suffocation or Munchausen syndrome by proxy.

### Sexual Abuse:

Actual or likely exploitation of children or adolescents. The child may be dependent and/or developmentally immature.

### Emotional Abuse:

Actual or likely, persistent or severe emotional ill treatment or rejection resulting in severe adverse effects on the emotional, physical and/or behavioural development of a child. All abuse involves some emotional ill treatment. This category should be used where it is the main or only form of abuse.

**Table 1.4: Composition of the Child Protection Register by category of abuse at 31 March 2010<sup>1</sup>**

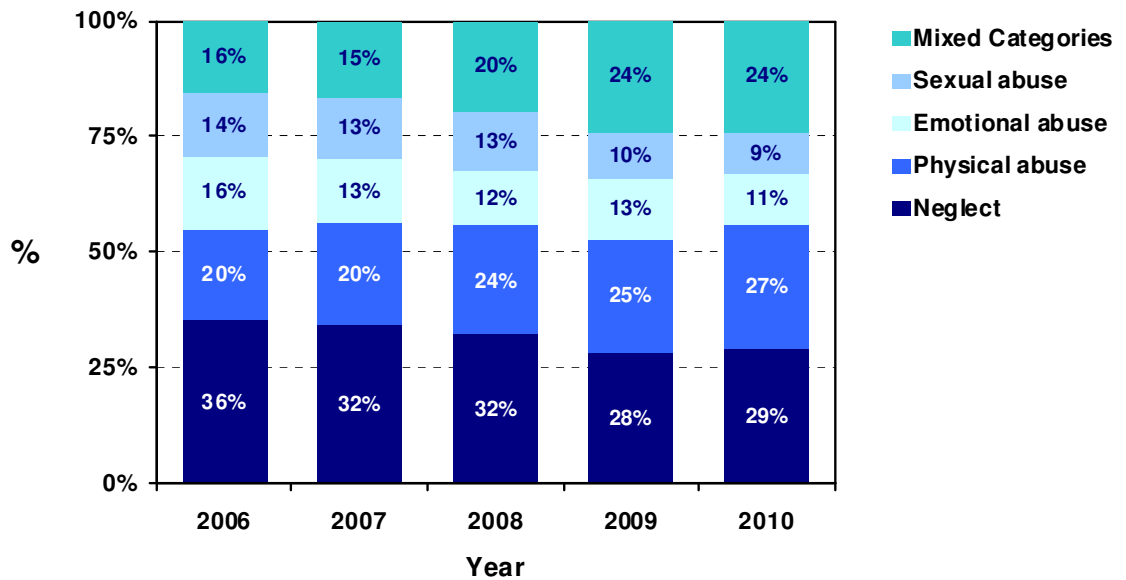
Category of Abuse	Potential	Suspected	Confirmed	Total
<b>Neglect, Physical Abuse and Sexual Abuse</b>	31	7	22	60
<b>Neglect and Physical Abuse</b>				
Main category – neglect	-	-	49	81
Main category - physical abuse	237	18	32	287
<b>Neglect and Sexual Abuse</b>				
Main category - neglect	-	-	-	30
Main category - sexual abuse	35	-	-	48
<b>Physical Abuse and Sexual Abuse</b>	51	10	9	70
<b>Neglect (only)</b>	348	45	289	682
<b>Physical Abuse (only)</b>	535	34	58	627
<b>Sexual Abuse (only)</b>	170	15	23	208
<b>Emotional Abuse (only)</b>	181	20	63	264
<b>Total</b>	<b>1,620</b>	<b>163</b>	<b>574</b>	<b>2,357</b>
<b>%</b>	<b>69</b>	<b>7</b>	<b>24</b>	<b>100</b>

<sup>1</sup> - cell counts have been suppressed to avoid personal disclosure

### Main Points

- At 31 March 2010, 29% (682) of children on the Child Protection Register were assessed to be at risk of Neglect (only), 27% (627) at risk of Physical Abuse (only), 11% (264) at risk of Emotional Abuse (only), 9% (208) at risk of Sexual Abuse (only) and 24% (576) at risk of more than one type of abuse
- Over two thirds (1,620) of children on the register were assessed as potential cases of abuse, with 24% (574) confirmed cases of abuse, and 7% (163) of cases where abuse was suspected
- Since 2006, the proportion of children on the register due to a combination of sexual/emotional/physical abuse and neglect has increased by eight percentage points from 16% in 2006 to 24% in 2010

**Figure 1.2: Composition of the Child Protection Register by category of abuse at 31 March (2006-2010)**



**Table 1.5: Composition of the Child Protection Register by category of abuse at 31 March (2006-2010)**

Category of Abuse <sup>1</sup>	2006		2007		2008		2009		2010	
	No.	%	No.	%	No.	%	No.	%	No.	%
<b>Neglect, Physical Abuse and Sexual Abuse</b>	18	1	40	2	42	2	72	3	60	3
<b>Neglect and Physical Abuse</b>										
Main category - neglect	35	2	69	4	61	3	123	5	81	3
Main category - physical abuse	107	7	176	10	162	8	244	10	287	12
<b>Neglect and Sexual Abuse</b>										
Main category - neglect	14	1	16	1	23	1	35	1	30	1
Main category - sexual abuse	32	2	43	2	57	3	54	2	48	2
<b>Physical Abuse and Sexual Abuse</b>										
Main category - physical abuse	31	2	40	2	53	3	61	2	56	2
Main category - sexual abuse	8	0	44	2	10	0	13	1	14	1
<b>Neglect (only)</b>	582	36	569	32	665	32	706	28	682	29
<b>Physical Abuse (only)</b>	323	20	357	20	488	24	618	25	627	27
<b>Sexual Abuse (only)</b>	226	14	225	12	244	12	242	10	208	9
<b>Emotional Abuse (only)</b>	263	16	226	13	266	13	320	13	264	11
<b>Total</b>	<b>1,639</b>	<b>100</b>	<b>1,805</b>	<b>100</b>	<b>2,071</b>	<b>100</b>	<b>2,488</b>	<b>100</b>	<b>2,357</b>	<b>100</b>

#### Main Points

- 43% (56) of the decrease in numbers on the register between 2009 and 2010, was related to Emotional Abuse only
- In the same period, children registered due to Physical Abuse has increased by seven percentage points, from 20% in 2006 to 27% in 2010
- Between 2006 and 2010, the proportion of children registered under 'Neglect (only)' decreased by seven percentage points, from 36% (582) to 29% (680)

## Length of Time on the Child Protection Register

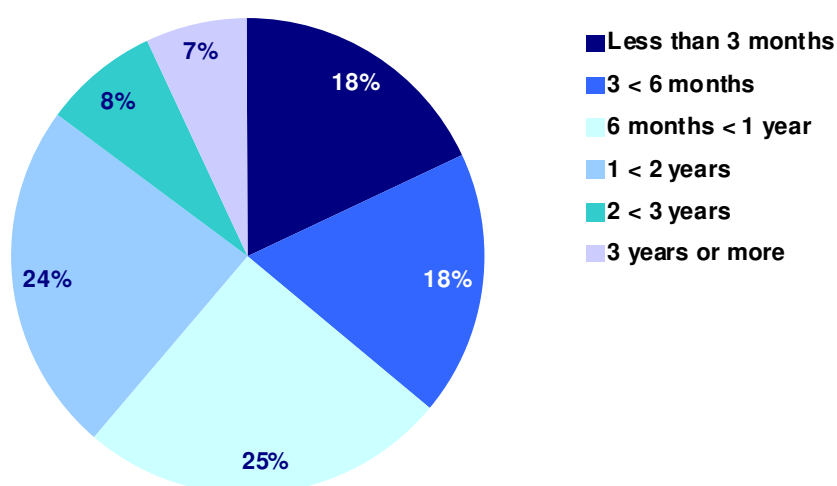
**Table 1.6: Composition of the Child Protection Register by length of time on the register and age at 31 March 2010**

Length of time on register	Age Group (years)											
	<1		1-4		5-11		12-15		16+		Total	
	No.	%	No.	%	No.	%	No.	%	No.	%	No.	%
Less than 3 months	60	31	110	18	137	16	80	16	28	16	415	18
3 months < 6 months	79	40	110	18	138	16	84	17	14	8	425	18
6 months < 1 year	57	29	163	26	215	25	107	21	37	22	579	25
1 year < 2 years	0	0	172	28	218	25	135	27	45	26	570	24
2 years < 3 years	0	0	49	8	72	8	56	11	15	9	192	8
3 years or more	0	0	21	3	78	9	45	9	32	19	176	7
<b>Total</b>	<b>196</b>	<b>100</b>	<b>625</b>	<b>100</b>	<b>858</b>	<b>100</b>	<b>507</b>	<b>100</b>	<b>171</b>	<b>100</b>	<b>2,357</b>	<b>100</b>

### Main Points

- At 31 March 2010, 61% of children had been registered for less than one year, with 7% registered for three years or longer
- Of the 176 children on the register for three years or longer, 44% (78) were aged 5-11 and 26% (45) were aged 12-15
- Two-fifths (43%) of children aged 5-11 had been on the register for one year or longer

**Figure 1.3: Length of time on the Child Protection Register at 31 March 2010**



**Table 1.7: Composition of the Child Protection Register by length of time on the register at 31 March (2006-2010)**

Length of time on the register	2006		2007		2008		2009		2010	
	No.	%	No.	%	No.	%	No.	%	No.	%
Less than 3 months	262	16	352	20	322	16	490	19	415	18
3 months < 6 months	301	18	289	16	360	17	410	16	425	18
6 months < 1 year	386	24	452	25	521	25	599	24	579	25
1 year < 2 years	398	24	431	24	536	26	585	24	570	24
2 years < 3 years	149	9	143	8	208	10	240	10	192	8
3 years or more	143	9	138	8	124	6	164	7	176	7
<b>Total</b>	<b>1,639</b>	<b>100</b>	<b>1,805</b>	<b>100</b>	<b>2,071</b>	<b>100</b>	<b>2,488</b>	<b>100</b>	<b>2,357</b>	<b>100</b>

#### **Main Points**

- Between 2006 and 2010, the proportion of children on the register for 3 years or more, fell from 9% to 7% respectively;
- In the five year period from 2006 to 2010, there has been little change in the profile of children by duration on the register;

## Child Protection Registrations

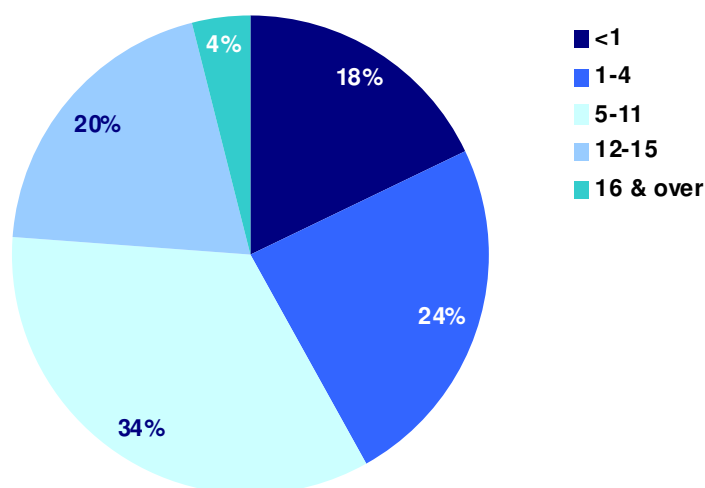
**Table 1.8: Child Protection Registrations by gender and age during the year ended 31 March 2010**

Age Group (years)	Boys		Girls		Total	
	No.	%	No.	%	No.	%
<1	168	18	169	18	337	18
1-4	243	26	206	22	449	24
5-11	335	36	292	32	627	34
12-15	161	17	199	22	360	20
16 & over	24	3	49	5	73	4
<b>Total</b>	<b>931</b>	<b>100</b>	<b>915</b>	<b>100</b>	<b>1,846</b>	<b>100</b>

### Main Points

- There were 1,846 registrations onto the Child Protection Register in 2009/10, with just over 50% boys and just under 50% girls registered during this period;
- Comparison by gender, indicates girls registered during 2009/10 tended to be slightly older than boys, with 27% of girls aged 12 or over, compared with 20% of boys;
- Just over two fifths (43%) of registrations were in respect of children under 5 years old;

**Figure 1.4: Child Protection Registrations by age during year ended 31 March 2010**



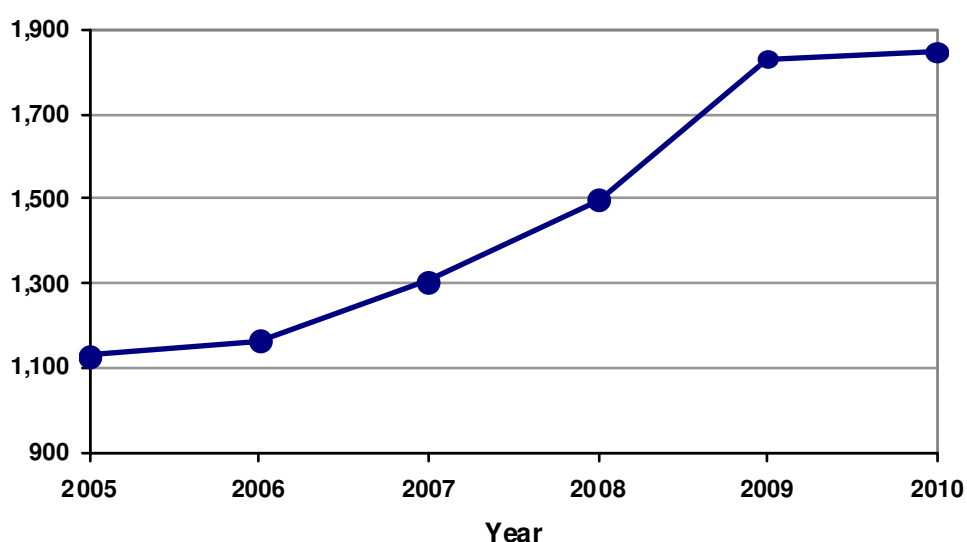
**Table 1.9: Child Protection Registrations by age during year ended 31 March (2005–2010)**

Age Group (years)	2005		2006		2007		2008		2009		2010	
	No.	%	No.	%	No.	%	No.	%	No.	%	No.	%
<1	209	19	209	18	231	18	253	17	276	15	337	18
1-4	238	21	287	25	278	21	359	24	412	23	449	24
5-11	411	36	399	34	446	34	540	36	655	36	627	34
12-15	243	22	237	20	290	22	310	21	410	22	360	20
16 & over	28	2	34	3	60	5	35	2	76	4	73	4
<b>Total</b>	<b>1,129</b>	<b>100</b>	<b>1,166</b>	<b>100</b>	<b>1,305</b>	<b>100</b>	<b>1,497</b>	<b>100</b>	<b>1,829</b>	<b>100</b>	<b>1,846</b>	<b>100</b>

**Main Points**

- Registrations onto the Register increased by 1% (17), from 1,829 in 2009 to 1,846 in 2010;
- Between 2005 and 2010, registrations increased by 64% (717) from 1,129 to 1,846 respectively;
- There has been little change in the age profile of registrations between 2005 and 2010;
- Registrations of children aged 1-4, and 16 or over between 2005 and 2010, rose by 3 and 2 percentage points to 24% and 4%, respectively;
- The relative proportions of registrations for children aged under 1, fell by 1 percentage point from 19% in 2005 to 18% in 2010;

**Figure 1.5: Child Protection Registrations during year ended 31 March (2005–2010)**



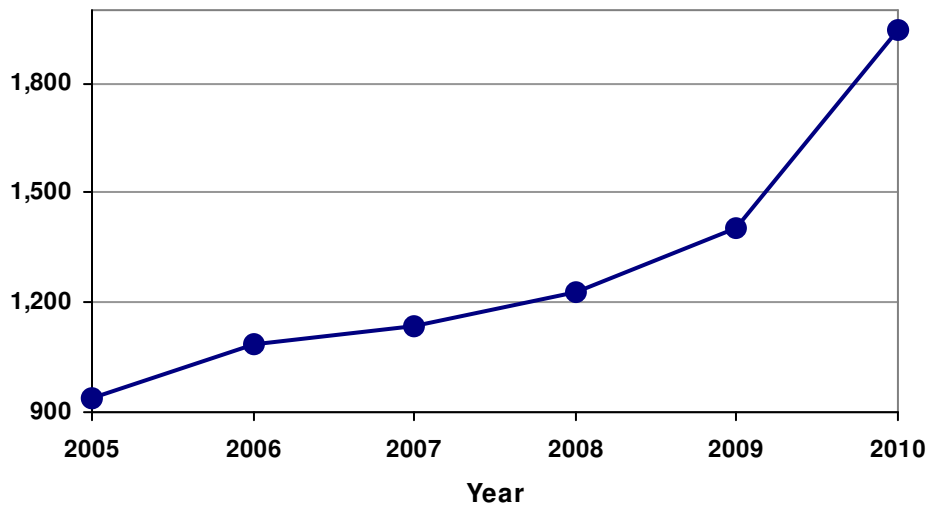
**Table 1.10: Child Protection De-registrations during year ended 31 March (2005 – 2010)**

Year	2005	2006	2007	2008	2009	2010
De-Registrations	940	1,085	1,133	1,230	1,404	1,947

**Main Points**

- De-Registrations increased by 39% (543), from 1,404 in 2009 to 1,947 in 2010;
- Between 2005 and 2010, de-registrations more than doubled, from 940 to 1,947 respectively;

**Figure 1.6: Child Protection De-registrations during year ended 31 March (2005 – 2010)**



## Looked After Children

A child becomes looked after if they are accommodated for a continuous period of twenty-four hours or more by Health and Social Care Trusts in the exercise of their social care function.

### Looked after children

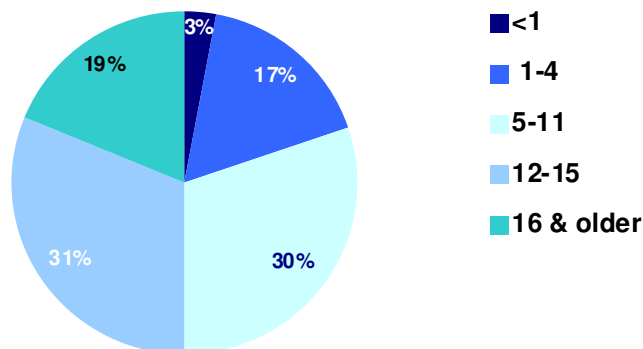
**Table 2.1: Looked after children by age and gender at 31 March 2010**

Age (years)	Boys		Girls		Total	
	No.	%	No.	%	No.	%
<1	32	2	46	4	78	3
1-4	252	19	189	15	441	17
5-11	411	31	380	30	791	30
12-15	422	31	389	31	811	31
16 or older	227	17	258	20	485	19
<b>All Ages</b>	<b>1,344</b>	<b>100</b>	<b>1,262</b>	<b>100</b>	<b>2,606</b>	<b>100</b>

#### Main Points

- At 31 March 2010, 2,606 children were looked after children in Northern Ireland;
- By age, 3% (78) were under one, and 19% (485) were 16 years or older;
- Over half (52%) looked after children were boys, and 48% were girls;
- The age profile of boys and girls were similar, with a slightly higher proportion of girls (20%) than boys (17%) 16 years or older;

**Figure 2.1: Looked after children by age at 31 March 2010**



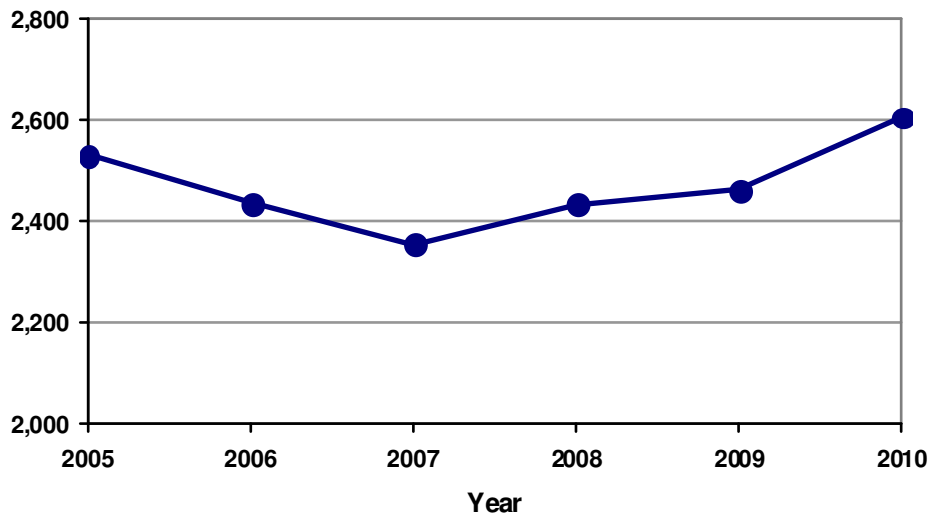
**Table 2.2: Looked after children by age at 31 March (2005–2010)**

Age (years)	2005		2006		2007		2008		2009		2010	
	No.	%	No.	%	No.	%	No.	%	No.	%	No.	%
<1	61	2	60	2	64	3	49	2	72	3	78	3
1-4	348	14	334	14	298	13	364	15	377	15	441	17
5-11	869	34	830	34	765	32	782	32	753	31	791	30
12-15	818	32	763	31	765	32	733	30	760	31	811	31
16 or over	435	17	449	18	464	20	505	21	501	20	485	19
<b>Total</b>	<b>2,531</b>	<b>100</b>	<b>2,436</b>	<b>100</b>	<b>2,356</b>	<b>100</b>	<b>2,433</b>	<b>100</b>	<b>2,463</b>	<b>100</b>	<b>2,606</b>	<b>100</b>

**Main Points**

- At 31 March 2010, there were 2,606 looked after children in Northern Ireland, up by 6% (143) from 2009, and 3% (75) since 2005;
- The age profile of looked after children from 2005 to 2010, indicates an increase in the proportion in aged ‘1-4’, which rose by 3 percentage points from 14% to 17% respectively;
- The proportion of children aged ‘5-11’ fell from 34% in 2005 to 30% in 2010

**Figure 2.2: Looked after children at 31 March (2005 – 2010)**



## Looked after children by legal status

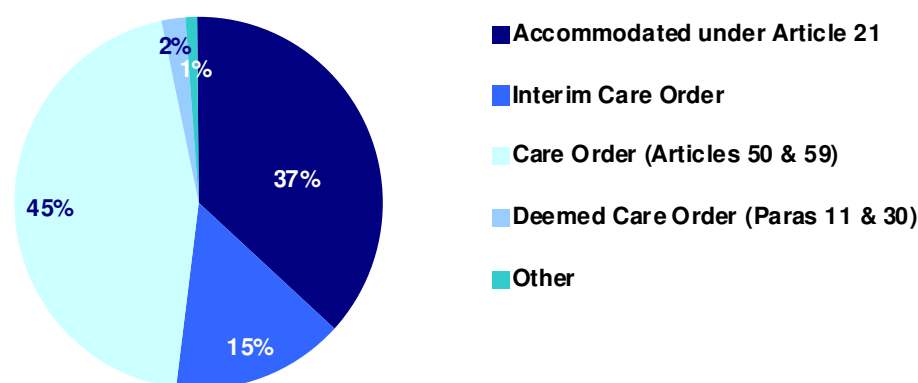
Table 2.3: Looked after children by legal status and gender at 31 March 2010<sup>1</sup>

Legal Status	Boys		Girls		Total	
	No.	%	No.	%	No.	%
Accommodated under Article 21	493	37	470	37	963	37
Interim Care Order	188	14	200	16	388	15
Care Order (Articles 50 & 59)	627	47	532	42	1,159	45
Deemed Care Order (Para's 11 & 30)	25	2	39	3	64	2
Other	11	1	21	2	32	1
<b>Total</b>	<b>1,344</b>	<b>100</b>	<b>1,262</b>	<b>100</b>	<b>2,606</b>	<b>100</b>

### Main Points

- At 31 March 2010, 45% (1,159) looked after children were subject to 'Care Orders (Articles 50 & 59)', 37% (963) were 'Accommodated under Article 21', 15% (388) were subject to 'Interim Care Orders' and 2% (64) were subject to a 'Deemed Care Order (Para's 11 & 30)'
- The profile by legal status was similar for boys and girls, with almost equal proportions detailed within each legal status category;

Figure 2.3: Looked after children by legal status at 31 March 2010



<sup>1</sup> 'Other' includes children taken into care under Emergency Protection Orders (Articles 63 & 64).

**Table 2.4: Looked after children by legal status at 31 March (2005–2010)<sup>1</sup>**

Legal Status	2005		2006		2007		2008		2009		2010	
	No.	%	No.	%	No.	%	No.	%	No.	%	No.	%
Accommodated under Article 21	794	31	760	31	800	34	902	37	880	36	963	37
Interim Care Order	325	13	302	12	218	9	276	11	329	13	388	15
Care Order (Articles 50 & 59)	1,013	40	1,066	44	1,093	46	1,092	45	1,133	46	1,159	45
Deemed Care Order (Paras 11 & 30)	357	14	278	11	216	9	146	6	104	4	64	2
Freed for Adoption and Looked After by Board/Trust	11	0	0	0	0	0	0	0	0	0	0	0
Other	31	1	30	1	29	1	17	1	17	1	32	1
<b>Total</b>	<b>2,531</b>	<b>100</b>	<b>2,436</b>	<b>100</b>	<b>2,356</b>	<b>100</b>	<b>2,433</b>	<b>100</b>	<b>2,463</b>	<b>100</b>	<b>2,606</b>	<b>100</b>

#### Main Points

- Over the five years from 2005 to 2010, the proportion of looked after children subject to 'Care Orders (Articles 50 & 59)' increased by 5 percentage points from 40% (1,013) in 2005 to 45% (1,159) in 2010;
- In contrast, the proportions subject to 'Deemed Care Order (Paras 11 & 30)' fell by 12 percentage points from 14% (357) to 2% (64);
- Since 2005, the proportions 'Accommodated under Article 21' has increased by 6 percentage points from 31% (794) to 37% (963) in 2010;

<sup>1</sup> 'Other' includes children taken into care under Emergency Protection Orders (Articles 63 & 64).

## Looked after children by placement type

Looked after children care can be placed in:

- Residential care;
- Foster care;
- With Family;
- Other Placement types<sup>1</sup>.

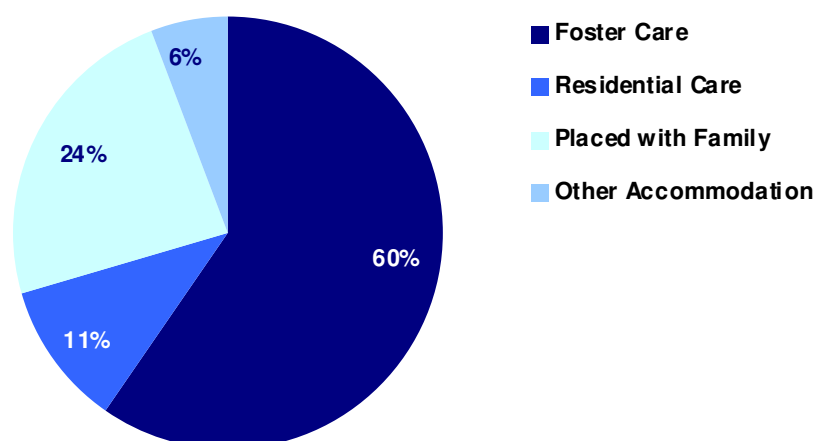
**Table 2.5: Looked after children by placement type at 31 March (2005-2010)<sup>2</sup>**

Placement Type	2005		2006		2007		2008		2009		2010	
	No.	%	No.	%	No.	%	No.	%	No.	%	No.	%
Residential Care	317	13	321	13	283	12	319	13	308	13	287	11
Foster Care	1,606	63	1,522	62	1,389	59	1,376	57	1,607	65	1,687	65
Placed with Family	500	20	486	20	566	24	622	26	467	19	483	19
Other Accommodation <sup>1</sup>	108	4	107	4	118	5	116	5	81	3	149	6
<b>All Placements</b>	<b>2,531</b>	<b>100</b>	<b>2,436</b>	<b>100</b>	<b>2,356</b>	<b>100</b>	<b>2,433</b>	<b>100</b>	<b>2,463</b>	<b>100</b>	<b>2,606</b>	<b>100</b>

### Main Points

- At 31 March 2010, 65% (1,687) of looked after children were in foster care placement, with 19% (483) placed with family, 11% (287) in residential care, and 6% (145) in 'Other Placement' types;
- Residential Care placements have decreased by 7% (21) from 308 in 2009 to 287 in 2010, compared with increases of 84% (68) and 5% (80) in 'Other Accommodation' and Foster Care respectively;
- Foster care placements have been increasing in recent years, rising from 57% in 2008 to 60% in 2010;

**Figure 2.4: Looked after children by placement type at 31 March 2010**



<sup>1</sup> Some HSC Trusts may have inappropriately classified children placed in foster care as being placed with family on the LA return provided to CIB.

## Looked after children by length of time in care

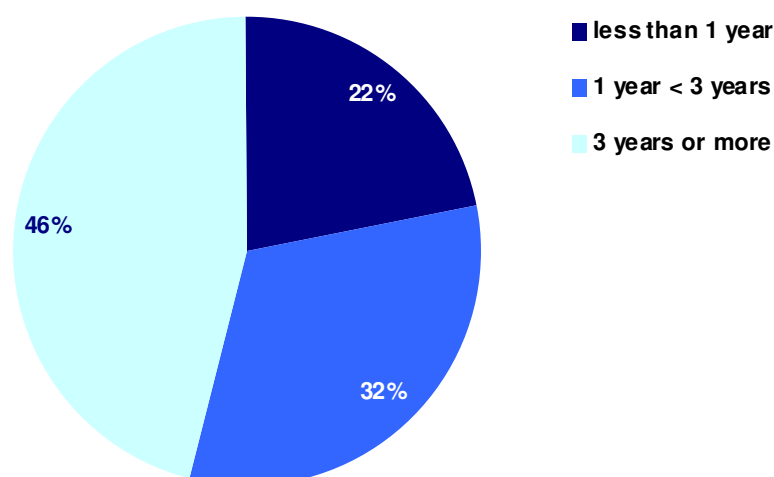
Table 2.6: Looked after children by length of time in care and age at 31 March 2010

Length of time in care	Age Band (years)											
	< 1		1-4		5-11		12-15		16 & older		Total	
	No.	%	No.	%	No.	%	No.	%	No.	%	No.	%
Less than 3 months	21	34	44	10	43	5	45	6	16	3	169	6
3 months < 6 months	18	29	34	7	31	4	20	2	9	2	112	4
6 months < 1 year	23	37	98	21	92	12	67	8	31	6	311	12
1 year < 2 years	0	0	156	34	154	19	114	14	61	13	485	19
2 years < 3 years	0	0	72	16	109	14	98	12	49	10	328	13
3 years or more	0	0	53	12	362	46	467	58	319	66	1,201	46
<b>Total</b>	<b>62</b>	<b>100</b>	<b>457</b>	<b>100</b>	<b>791</b>	<b>100</b>	<b>811</b>	<b>100</b>	<b>485</b>	<b>100</b>	<b>2,606</b>	<b>100</b>

### Main Points

- At 31 March 2010, 46% (1,201) of looked after children had been in care for three years or more, with 77% (2,014) in care for one year or longer;
- Just over 1 in 5 (23%) children had been in care for less than 1 year;
- Older children (16 years & older) were less likely than younger children to have spent shorter periods of time (less than 6 months) in care
- 37% (23) of children under 1 year old had been in care between six months and one year

Figure 2.5: Looked after children by length of time in care at 31 March 2010



**Table 2.7: Looked after children by length of time in care at 31 March (2005–2010)**

Length of time in care	2005		2006		2007		2008		2009		2010	
	No.	%	No.	%	No.	%	No.	%	No.	%	No.	%
Less than 3 months	169	6	126	4	133	4	121	4	172	7	169	6
3 months < 6 months	121	5	107	4	126	5	169	7	168	7	112	4
6 months < 1 year	229	9	193	8	211	9	260	11	232	9	311	12
1 year < 2 years	401	16	402	17	292	12	354	15	386	16	485	19
2 years < 3 years	316	12	315	13	303	13	233	10	272	11	328	13
3 years or more	1,295	51	1,293	53	1,291	55	1,296	53	1,233	50	1,201	46
<b>Total</b>	<b>2,531</b>	<b>100</b>	<b>2,436</b>	<b>100</b>	<b>2,356</b>	<b>100</b>	<b>2,433</b>	<b>100</b>	<b>2,463</b>	<b>100</b>	<b>2,606</b>	<b>100</b>

**Main Points**

- In recent years, the proportion of looked after children in care for three years or more fell from 55% in 2007 to 46% in 2010;
- Between 2005 and 2010, there was little change in the profile of children by length of time in care, with similar proportions in care for three years or more, less than one year, and between one and three years, respectively;

## Respite Care

Respite care generally refers to a series of short-term, pre-planned or ad-hoc placements when a child moves temporarily from his/her carer (i.e. foster care, residential care or with family etc), to allow the child and the carer to spend some time away from each other. The respite move could involve a change in placement type (i.e. foster care to residential care) or the child may remain in the same placement type (i.e. foster care to foster care). Children may also move from a family placement to other placement types. The use of respite care varies across Trusts. Some Trusts make considerable use of short-term respite care, aimed at maintaining a child in a family placement. Other Trusts use respite care on a more limited basis.

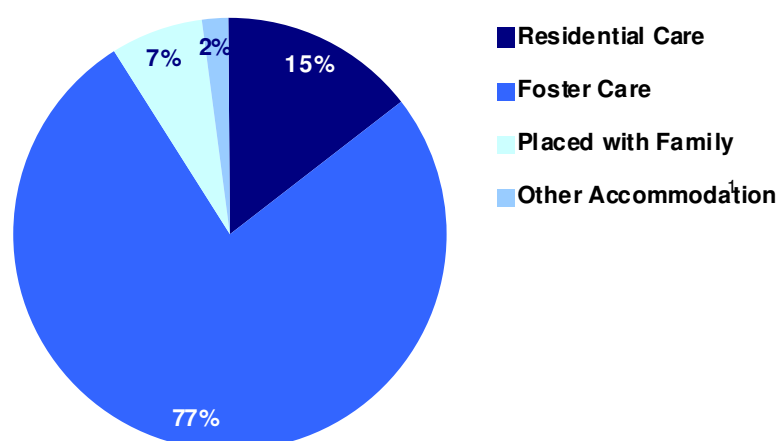
**Table 2.8: Respite placements by type and age 2009/10<sup>1</sup>**

Placement Type	Age Band (years)											
	< 1		1-4		5-11		12-15		16+		Total	
	No.	%	No.	%	No.	%	No.	%	No.	%	No.	%
Residential Care	-	-	-	-	40	14	44	20	22	33	108	15
Foster Care	-	-	102	88	230	80	158	70	36	54	568	77
With Family	-	-	-	-	-	-	15	7	-	-	52	7
Other <sup>2</sup>	-	-	-	-	-	-	8	4	-	-	12	2
<b>Total</b>	<b>43</b>	<b>100</b>	<b>116</b>	<b>100</b>	<b>288</b>	<b>100</b>	<b>225</b>	<b>100</b>	<b>67</b>	<b>100</b>	<b>739</b>	<b>100</b>

### Main Points

- Of 739 respite placements in 2009/10, 77% (568) were foster care, 15% (108) were residential care, 7% (52) were with family, and 2% (12) were 'Other' placement types;
- Just over 69% (513) of respite placements in 2009/10, were in respect of children aged '5-15' years, with 22% (159) under 5, and 9% (67) 16 years or older;
- Generally, younger children, those under 5 years old, were more likely than older children, aged '5-11', to be placed in foster care;

**Figure 2.6: Respite placements by type during 2009/10**



**Table 2.9: Respite placements by type for years ending 31 March (2005- 2010)**

Placement Type	2005		2006		2007		2008		2009		2010	
	No.	%	No.	%	No.	%	No.	%	No.	%	No.	%
Residential Care	174	18	75	10	70	10	95	11	108	16	108	15
Foster Care	595	61	613	78	576	81	648	78	532	77	568	77
With Family	158	16	55	7	43	6	59	7	42	6	52	7
Other <sup>1</sup>	56	6	42	5	25	4	32	4	7	1	12	2
<b>Total</b>	<b>983</b>	<b>100</b>	<b>785</b>	<b>100</b>	<b>714</b>	<b>100</b>	<b>834</b>	<b>100</b>	<b>689</b>	<b>100</b>	<b>739</b>	<b>100</b>

#### Main Points

- From 2005 to 2010, respite placements ranged from a high of 983 in 2005 to a low of 689 in 2009, with 739 respite placements in 2010;
- Foster care placements increased by 16 percentage points from 61% in 2005 to 77% in 2010;
- During the same period, placements With Family and in Residential Care dropped by 9 and 3 percentage points from 16% and 18%, to 7% and 15%, respectively in 2010;

<sup>1</sup> Other accommodation includes: independent living, supported accommodation, secure accommodation, hospital, hostels, aftercare facilities, Simon community, respite care facilities, bed & breakfast accommodation, bed-sits, dependent living etc.

## Discharges from care

**Table 2.10: Discharges from care by length of time in care and age 2009/10<sup>1</sup>**

Length of time in care	Age Band (years)											
	< 1		1-4		5-11		12-15		16 & older		Total	
	No.	%	No.	%	No.	%	No.	%	No.	%	No.	%
Under 2 weeks	14	41	65	42	141	53	76	42	8	3	304	33
2 weeks < 3 months	10	29	15	10	28	11	27	15	9	3	89	10
3 months < 6 months	5	15	14	9	14	5	14	8	15	6	62	7
6 months < 1 year	5	15	15	10	21	8	24	13	11	4	76	8
1 year < 2 years	0	0	15	10	20	8	17	9	29	11	81	9
2 years or more	0	0	32	21	41	15	24	13	199	73	296	33
<b>Total</b>	<b>34</b>	<b>100</b>	<b>156</b>	<b>100</b>	<b>265</b>	<b>100</b>	<b>182</b>	<b>100</b>	<b>271</b>	<b>100</b>	<b>908</b>	<b>100</b>

### Main Points

- There were 908 discharges from care during 2009/10;
- Just over 2 in 5 (42%) of these related to children in care for 1 year or more, with 33% (304) in care for less than 2 weeks;
- 73% (199) of those discharged aged 16 and older, had been in care for 2 years or more;

# Children In Need

The Children (Northern Ireland) Order 1995 states that a child is in need if:

- he or she is unlikely to achieve or maintain, or have the opportunity of achieving or maintaining, a reasonable standard of health or development without the provision of services by an authority;
- his or her health or development is likely to be significantly impaired, or further impaired, without the provision of such services; or
- he or she is disabled.<sup>1,2</sup>

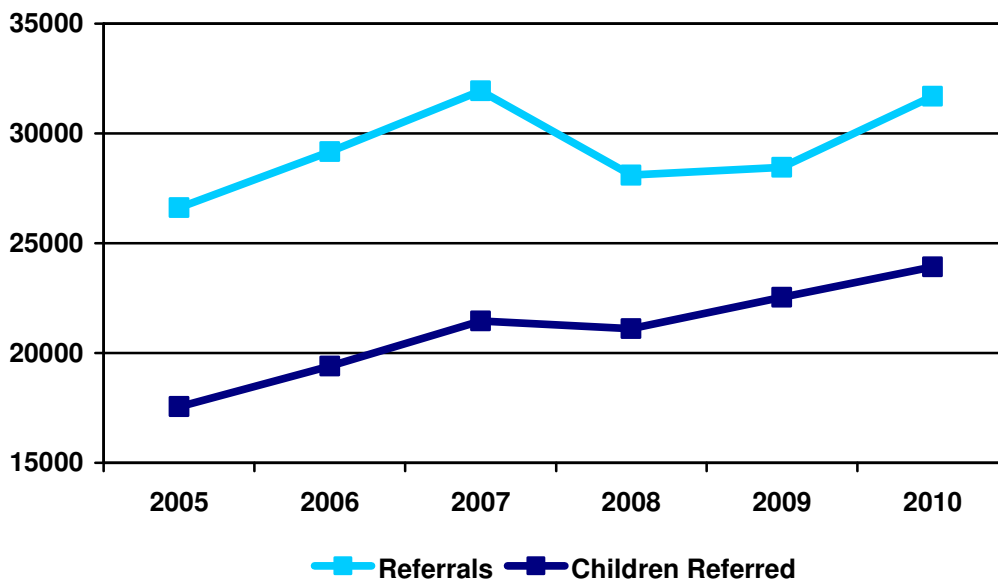
**Table 3.1: Referrals, episodes and children referred for years ended 31 March (2005-2010)**

	2005	2006	2007	2008	2009	2010
<b>Referrals</b>	26,623	29,158	31,930	28,088	28,440	31,693
<b>Children Referred<sup>3</sup></b>	17,548	19,391	21,456	21,109	22,532	23,926

### Main Points

- There were 31,693 referrals to children’s social services during 2009/10, relating to 23,926 children; the count for referrals is higher than that for children as children may be referred more than once during the year;
- Compared to 2009, referrals increased by 11% (3,253), and by 19% (5,070) since 2005;
- Children referred have also increased, by 6% (1,394) from 2009 to 2010, and by 36% (6,378), in the five years from 2005 to 2010

**Figure 3.1: Referrals and children referred for years ended 31 March (2005-2010)**



1. 'Northern Ireland Social Work Law', Ciaran White, 2006  
 2. Per the Chronically Sick and Disabled Persons (Northern Ireland) 1978  
 3. These figures are derived from the date of referral.

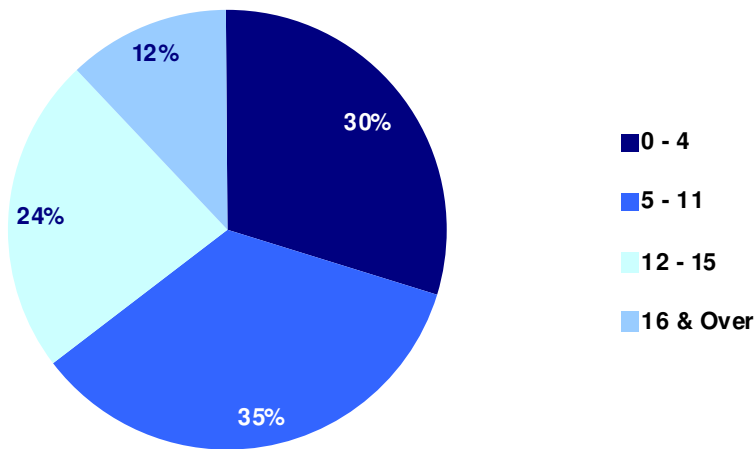
**Table 3.2: Children Referred by age and gender (2009/10)<sup>1</sup>**

Age (years)	Boys		Girls		Total	
	No.	%	No.	%	No.	%
0 – 4	3,632	29	3,421	30	7,053	30
5 – 11	4,513	36	3,807	33	8,320	35
12 – 15	2,798	23	2,877	25	5,675	24
16 & Over	1,471	12	1,288	11	2,759	12
<b>All Ages</b>	<b>12,414</b>	<b>100</b>	<b>11393</b>	<b>100</b>	<b>23,807</b>	<b>100</b>

**Main Points**

- Of the 23,926 children referred, initially, 23,807 were recorded as children in need on HSC Trust administrative systems;
- Of these, 65% (15,373) were under 12 years old, and 35% (8,434) were 12 or older;
- By gender, there were more boys (52%) than girls (48%) referred during 2009/10;

**Figure 3.2: Children Referred by age (2009/10)**



1. This figure is derived from the date of assessment and therefore differs from the figures given in Table 3.1

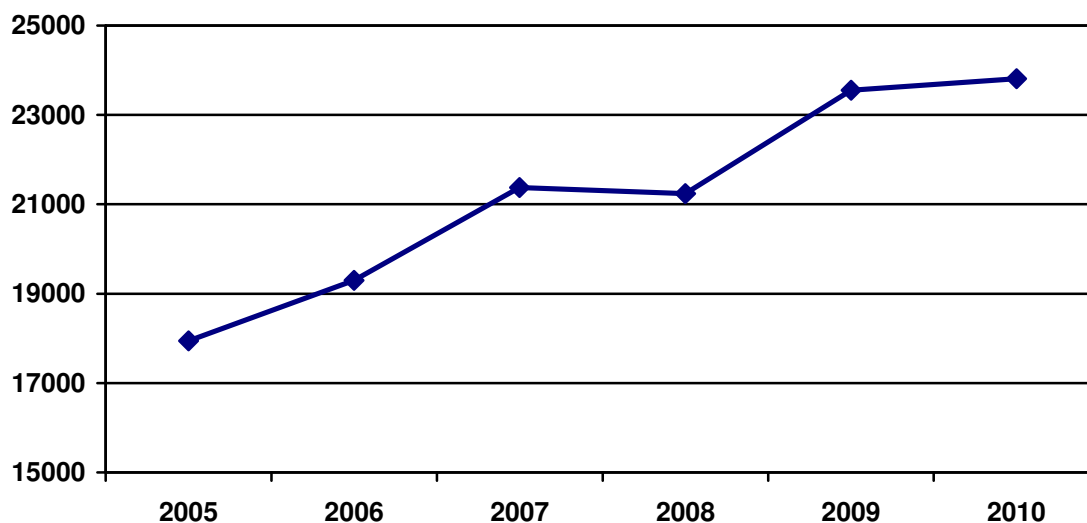
**Table 3.3: Children Referred by age for years ended 31 March (2005- 2010)**

Age (years)	2005		2006		2007		2008		2009		2010	
	No.	%	No.	%	No.	%	No.	%	No.	%	No.	%
0 - 4	4,860	28	5,306	27	5,629	26	5,600	27	6,636	30	7,053	30
5 - 11	6,064	35	6,756	35	7,215	34	7,127	34	7,743	35	8,320	35
12 - 15	4,693	27	5,041	26	5,665	27	5,590	27	5,509	25	5,675	24
16 & Over	1,881	11	2,198	11	2,865	13	2,660	13	2,492	11	2,759	12
<b>All Ages</b>	<b>17,498</b>	<b>100</b>	<b>19,301</b>	<b>100</b>	<b>21,374</b>	<b>100</b>	<b>20,977</b>	<b>100</b>	<b>22,380</b>	<b>100</b>	<b>23,807</b>	<b>100</b>

**Main Points**

- The numbers of children in need have increased by 36% (6,309) and 6% (1,427) since 2005 and 2009 respectively;
- The proportion of children in age band '0-4' has increased by four percentage points from 26% (5,629) in 2007 to 30% (7,053) in 2010;
- During the same period, the proportion of children in age band '12-15' fell by three percentage points, from 27% (5,665) to 24% (5,675);

**Figure 3.3: Children Referred for years ended 31 March (2005 – 2010)**



## Children's Residential Homes

Children's residential homes provide care and accommodation for children in accordance with the Children (Northern Ireland) Order 1995.

At 19 August 2010, there were 53 residential homes for children in Northern Ireland: of these, 39 were statutory and 14 were independent children's homes.

**Table 4.1: Children's statutory residential homes<sup>1</sup>**

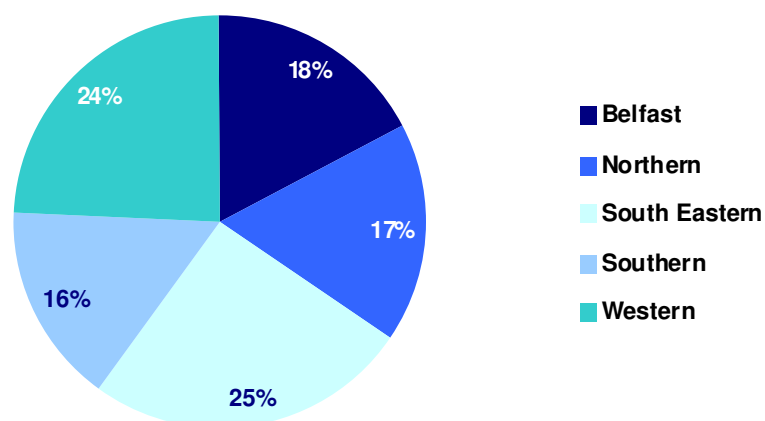
HSC Trust	Homes	Places	Average places per home
Belfast	7	50	7
Northern	7	48	7
South Eastern	8	72	9
Southern	7	45	6
Western	10	69	7
<b>Northern Ireland</b>	<b>39</b>	<b>284</b>	<b>7</b>

### Main Points

- At 19 August 2010, there were 39 children's statutory residential homes in Northern Ireland, providing 284 places, on average 7 places per home;
- Across HSC Trusts, the Western Trust had the highest number of statutory children's homes (10), providing 69 places, and averaging 7 places per home;
- Belfast, Northern and Southern Trusts all had 7 statutory residential homes for children, all averaging about 7 places per home;

1. Source: Health and Personal Services Regulation and Quality Improvement Authority (RQIA)

**Figure 4.1: Places in children’s statutory residential homes by HSC Trust**



**Table 4.2: Children’s independent residential homes<sup>1</sup>**

HSC Trust	Independent Homes	Independent Places	Places per 10,000-pop. aged under 18
Belfast	5	36	4.8
Northern	5	23	2.1
South Eastern	1	6	0.7
Southern	3	11	1.2
Western	-	-	-
<b>Northern Ireland</b>	<b>14</b>	<b>76</b>	<b>1.8</b>

#### Main Points

- At 19 August 2010, there were 14 independent residential children’s homes in Northern Ireland, providing 76 places, an average of 6 places per home;
- There were no independent children’s homes in the Western Trust;
- Of the 74 places in independent children’s homes, almost half (36) were provided by Belfast Trust;

# Readership Survey

**1 What do you use the Children Order Statistical Trends for?** (Please tick all that apply)

Briefing	<input type="checkbox"/>
Policy Formulation	<input type="checkbox"/>
Service Planning	<input type="checkbox"/>
General Information	<input type="checkbox"/>
Research	<input type="checkbox"/>
Other (Please Specify)	<input type="checkbox"/>
Do Not Use	<input type="checkbox"/>

**2 Were the Children Order Statistical Trends of any value to you?**

Yes	<input type="checkbox"/>
No	<input type="checkbox"/>

If 'No', please indicate why .....

.....

**3 Please indicate how useful you found each section of the Children Order Statistical Trends:** (Please tick one of the following)

	Very Useful	Useful	Little Use	No Use	Do Not Use
Children on Child Protection Register	<input type="checkbox"/>	<input type="checkbox"/>	<input type="checkbox"/>	<input type="checkbox"/>	<input type="checkbox"/>
Children Looked After	<input type="checkbox"/>	<input type="checkbox"/>	<input type="checkbox"/>	<input type="checkbox"/>	<input type="checkbox"/>
Children's Homes	<input type="checkbox"/>	<input type="checkbox"/>	<input type="checkbox"/>	<input type="checkbox"/>	<input type="checkbox"/>

**4 What did you find most useful?**

.....

.....

.....

**5 What did you find least useful?**

.....

.....

**6 Would you like to see other subject areas covered in the Children Order Statistical Trends?**

No	<input type="checkbox"/>
Yes (please specify)	<input type="checkbox"/>

.....

.....

**7 How would you judge the level of detail contained in the Children Order Statistical Trends?**

Too Much	<input type="checkbox"/>
About Right	<input type="checkbox"/>
Not Enough	<input type="checkbox"/>

**8 Would you like to see any improvements in the Children Order Statistical Trends?**

No   
Yes (please specify)

.....  
.....

**9 How satisfied are you with the information provided?**

Very Satisfied   
Satisfied   
Dissatisfied   
Very Dissatisfied

If 'Dissatisfied' or 'Very Dissatisfied', please indicate why  
.....

**10 Any further comments on this bulletin?**

.....  
.....  
.....  
.....

**11 To help us analyse the responses to this survey, please indicate:**

**a. Where you work:**

DHSSPS   
HSC Board   
HSC Trust   
Voluntary Organisation   
Other Department   
Research / Academic   
Other (please specify)

.....

**b. Your specific area(s) of interest:**

e.g. finance, service planning, elderly, family & childcare, learning disability etc

.....  
.....  
.....  
.....

---

All completed readership surveys should be returned to: Community Information Branch, DHSSPS, Annexe 2, Castle Buildings, Stormont Estate, Belfast, BT4 3SQ

**Thank you for taking the time to complete this survey**

# Appendix

## Belfast Health and Social Care Trust Trends 2005/06 – 2009/10

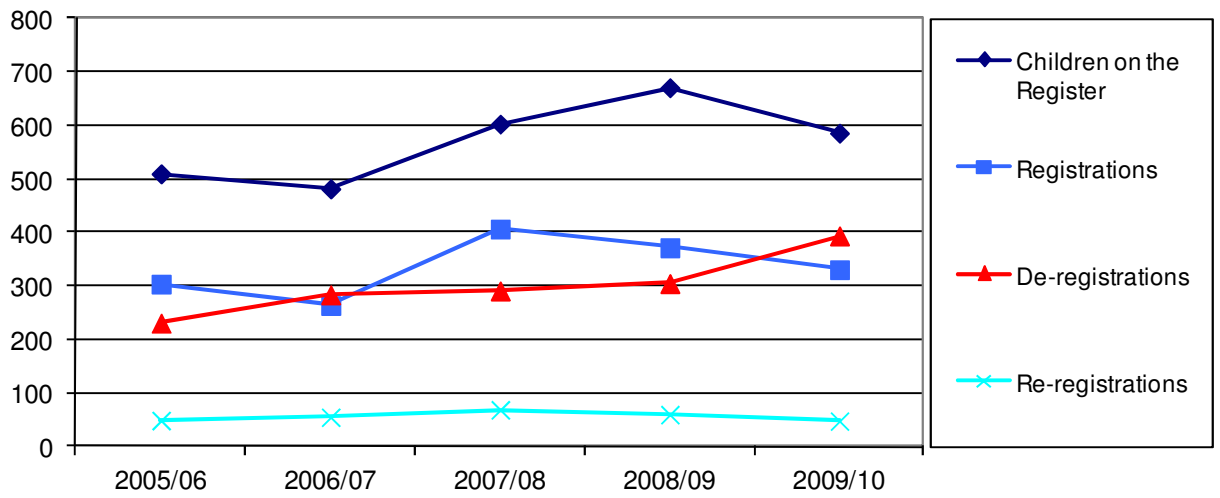
**Table1: Belfast Health and Social Care Trust Trends**

	2005/06	2006/07	2007/08	2008/09	2009/10
<b>Number of Children on Child Protection Register at 31 March</b>	510	482	603	671	586
<b>Number of Child Protection Registrations during year ended 31 March</b>	304	264	407	372	331
<b>Number of Child Protection De-registrations during year ended 31 March</b>	231	284	291	305	394
<b>Number of Child Protection Re-registrations at 31 March</b>	49	55	69	60	48
<b>Number of Looked After Children at 31 March</b>	615	594	592	587	627
<b>Admissions to Care during year ended 31 March</b>	250	305	247	279	215
<b>Discharges from Care during year ended 31 March</b>	251	318	250	271	194
<b>Number of Children who Received Respite Care during year ended 31 March</b>	165	175	167	50	19
<b>Number of Children in Need Referrals during year ended 31 March</b>	8,628	8,677	6,959	6,119	6,416
<b>Number of Children Referred during year ended 31 March</b>	4,492	4,742	4,842	4,917	4,434
<b>Number of Children Referred with a Disability during year ended 31 March</b>	166	165	185	282	98

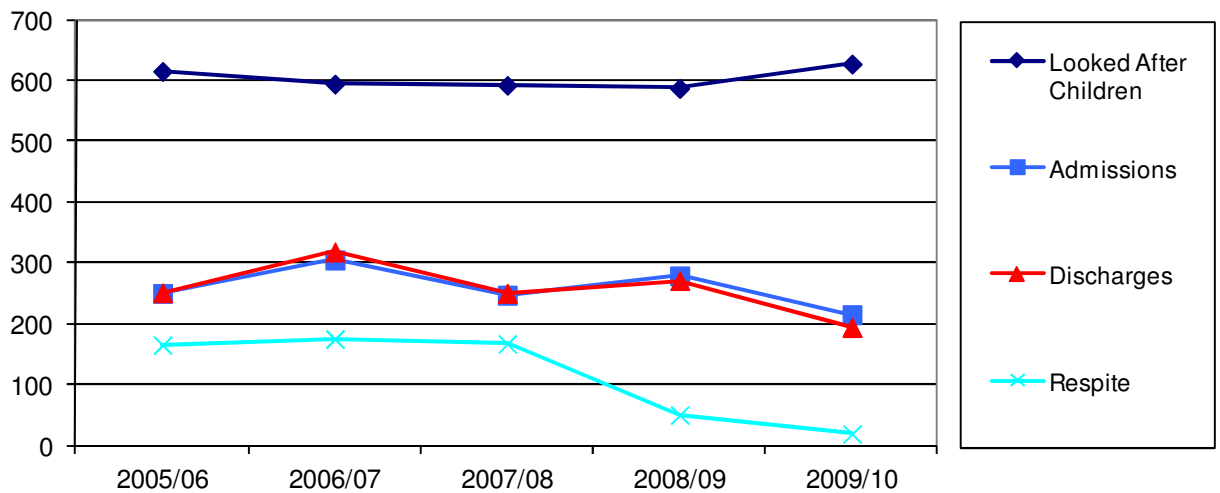
**Table 2: Belfast Health and Social Care Trust Trends per 10,000 of the Population under 18**

	2005/06	2006/07	2007/08	2008/09	2009/10
<b>Number of Children on Child Protection Register at 31 March</b>	67.0	63.9	80.2	90.1	78.7
<b>Number of Child Protection Registrations during year ended 31 March</b>	39.9	35.0	54.1	50.0	44.5
<b>Number of Child Protection De-registrations during year ended 31 March</b>	30.4	37.7	38.7	41.0	52.9
<b>Number of Child Protection Re-registrations at 31 March</b>	6.4	7.3	9.2	8.1	6.4
<b>Number of Looked After Children at 31 March</b>	80.8	78.8	78.7	78.8	84.2
<b>Admissions to Care during year ended 31 March</b>	32.8	40.4	32.8	37.5	28.9
<b>Discharges from Care during year ended 31 March</b>	33.0	42.2	33.2	36.4	26.1
<b>Number of Children who Received Respite Care during year ended 31 March</b>	21.7	23.2	22.2	6.7	2.6
<b>Number of Children in Need Referrals during year ended 31 March</b>	1,133.6	1,150.7	925.5	821.9	861.8
<b>Number of Children Referred during year ended 31 March</b>	590.2	628.8	643.9	660.5	595.6
<b>Number of Children Referred with a Disability during year ended 31 March</b>	21.8	21.9	24.6	37.9	13.2

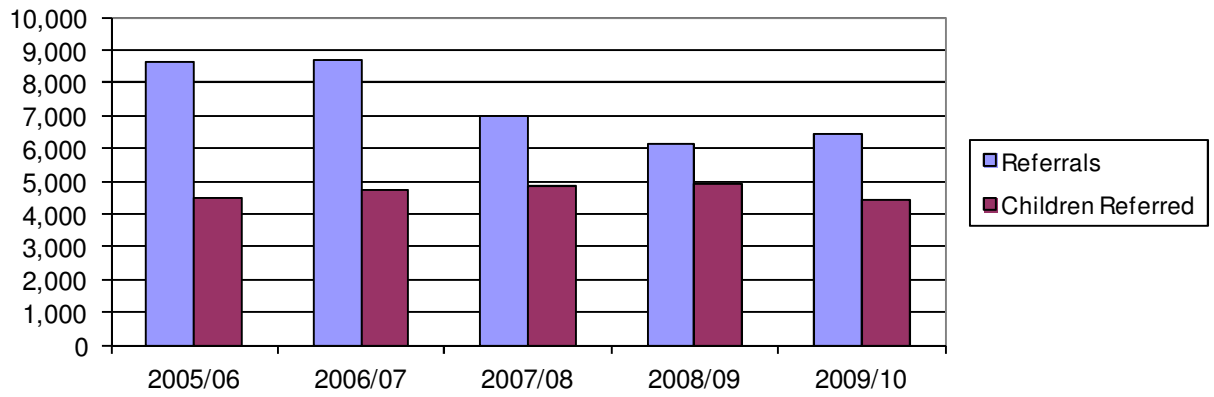
**The Number of Children on the Child Protection Register at 31 March in Comparison with Registrations, De-registrations and Re-registrations for year ended 31 March**



**The Number of Looked After Children at 31 March in Comparison to the Number of Admissions to Care, Discharges from Care and the Number of Children who Received Respite Care for year ended 31 March**



**The Number of Children in Need Referrals in Comparison to the Number of Children Referred for year ended 31 March**



## Northern Health and Social Care Trust Trends 2005/06 – 2009/10

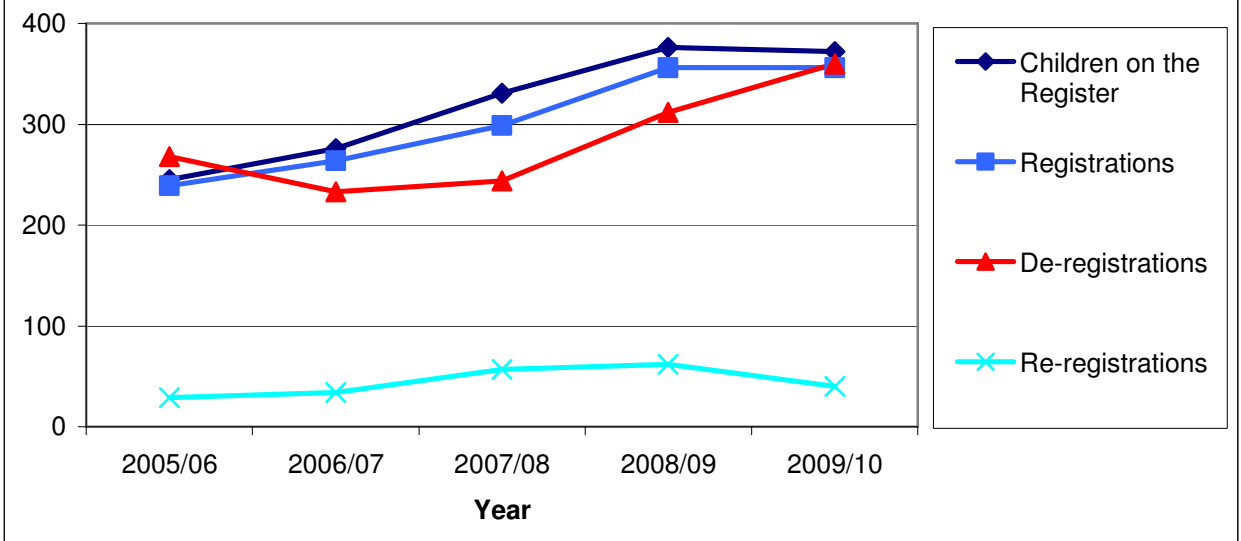
**Table 1: Northern Health and Social Care Trust Trends**

	2005/06	2006/07	2007/08	2008/09	2009/10
<b>Number of Children on Child Protection Register at 31 March</b>	245	276	331	376	372
<b>Number of Child Protection Registrations during year ended 31 March</b>	239	264	299	356	356
<b>Number of Child Protection De-registrations during year ended 31 March</b>	268	233	244	312	360
<b>Number of Child Protection Re-registrations at 31 March</b>	29	34	57	62	40
<b>Number of Looked After Children at 31 March</b>	501	493	506	519	519
<b>Admissions to Care during year ended 31 March</b>	164	199	207	259	368
<b>Discharges from Care during year ended 31 March</b>	169	203	199	242	367
<b>Number of Children who Received Respite Care during year ended 31 March</b>	167	149	157	145	164
<b>Number of Children in Need Referrals during year ended 31 March</b>	6,140	6,476	5,507	6,562	7,851
<b>Number of Children Referred during year ended 31 March</b>	4,374	4,759	4,333	5,096	5,827
<b>Number of Children Referred with a Disability during year ended 31 March</b>	374	199	197	178	237

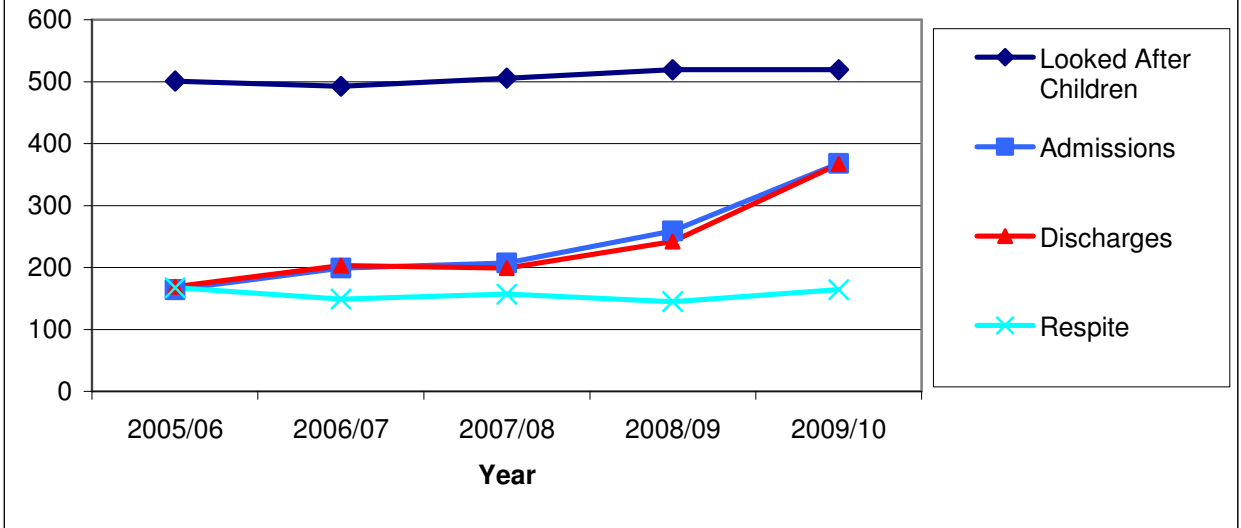
**Table 2: Northern Health and Social Care Trust Trends per 10,000 of the Population under 18**

	2005/06	2006/07	2007/08	2008/09	2009/10
<b>Number of Children on Child Protection Register at 31 March</b>	22.5	25.3	30.3	34.4	34.0
<b>Number of Child Protection Registrations during year ended 31 March</b>	21.9	24.2	27.4	32.6	32.6
<b>Number of Child Protection De-registrations during year ended 31 March</b>	24.6	21.4	22.4	28.5	32.9
<b>Number of Child Protection Re-registrations at 31 March</b>	2.7	3.1	5.2	5.7	3.7
<b>Number of Looked After Children at 31 March</b>	45.9	45.2	46.4	47.5	47.5
<b>Admissions to Care during year ended 31 March</b>	15.0	18.3	19.0	23.7	33.7
<b>Discharges from Care during year ended 31 March</b>	15.5	18.6	18.2	22.1	33.6
<b>Number of Children who Received Respite Care during year ended 31 March</b>	15.3	13.7	14.4	13.3	15.0
<b>Number of Children in Need Referrals during year ended 31 March</b>	563.0	594.2	504.5	600.3	718.2
<b>Number of Children Referred during year ended 31 March</b>	401.1	436.7	397.0	466.2	533.0
<b>Number of Children Referred with a Disability during year ended 31 March</b>	34.3	18.3	18.0	16.3	21.7

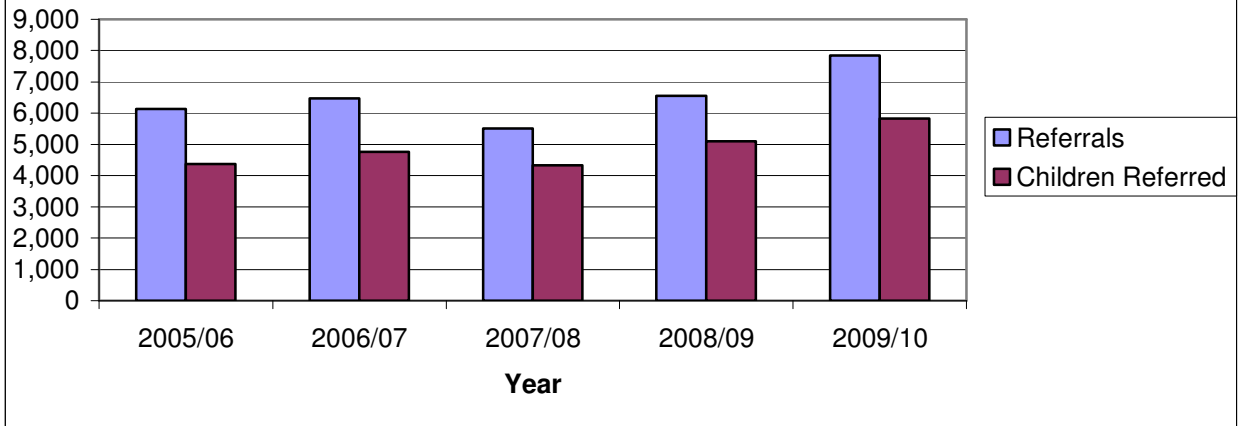
**The Number of Children on the Child Protection Register at 31 March in Comparison with Numbers of Registrations, De-registrations and Re-registrations for year ended 31 March**



**The Number of Looked After Children at 31 March in Comparison to the Number of Admissions to Care, Discharges from Care and the Number of Children who Received Respite Care for year ended 31 March**



**The Number of Children in Need Referrals in Comparison to the Number of Children Referred for year ended 31 March**



### South Eastern Health and Social Care Trust Trends 2005/06– 2009/10

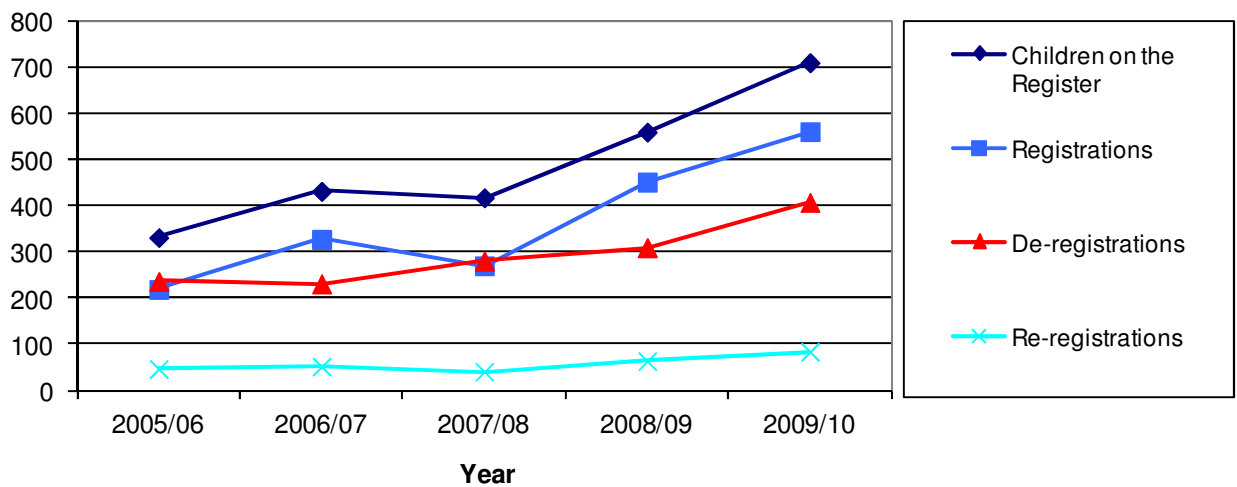
**Table 1: South Eastern Health and Social Care Trust Trends**

	2005/06	2006/07	2007/08	2008/09	2009/10
<b>Number of Children on Child Protection Register at 31 March</b>	331	431	417	559	709
<b>Number of Child Protection Registrations during year ended 31 March</b>	219	327	270	451	560
<b>Number of Child Protection De-registrations during year ended 31 March</b>	236	231	280	309	407
<b>Number of Child Protection Re-registrations at 31 March</b>	47	52	41	64	84
<b>Number of Looked After Children at 31 March</b>	514	501	553	562	635
<b>Admissions to Care during year ended 31 March</b>	157	152	237	172	214
<b>Discharges from Care during year ended 31 March</b>	136	159	172	155	102
<b>Number of Children who Received Respite Care during year ended 31 March</b>	188	184	247	256	263
<b>Number of Children in Need Referrals during year ended 31 March</b>	4,554	5,464	5,515	4,981	6,596
<b>Number of Children Referred during year ended 31 March</b>	3,180	3,723	4,076	3,924	4,867
<b>Number of Children Referred with a Disability during year ended 31 March</b>	171	163	156	129	167

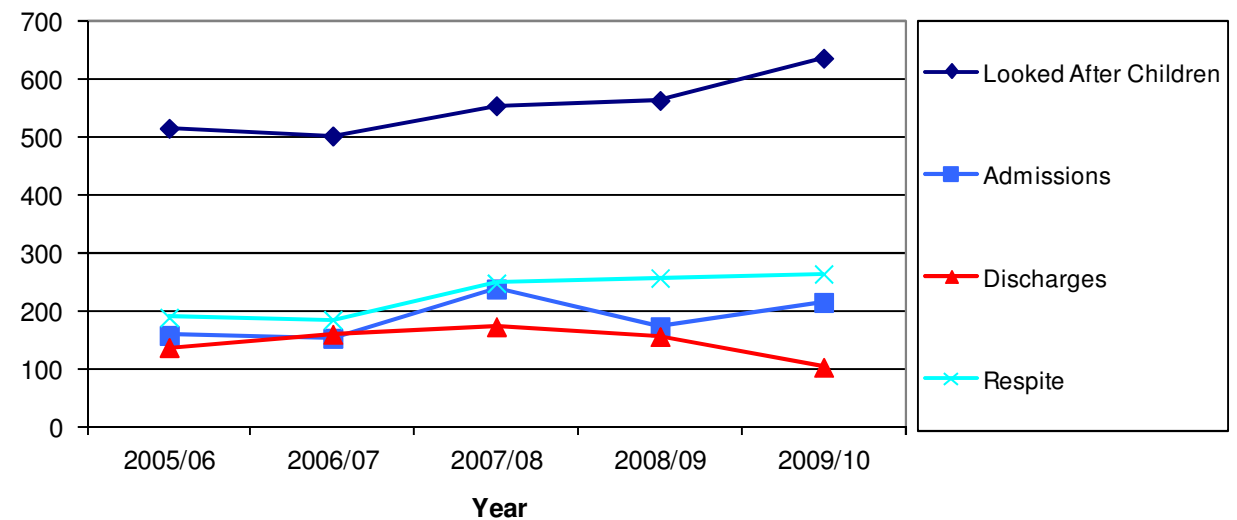
**Table 2: South Eastern Health and Social Care Trust Trends per 10,000 of the Population under 18**

	2005/06	2006/07	2007/08	2008/09	2009/10
<b>Number of Children on Child Protection Register at 31 March</b>	41.1	53.5	51.6	69.0	87.5
<b>Number of Child Protection Registrations during year ended 31 March</b>	27.2	40.6	33.4	55.7	69.1
<b>Number of Child Protection De-registrations during year ended 31 March</b>	29.3	28.7	34.7	38.1	50.2
<b>Number of Child Protection Re-registrations at 31 March</b>	5.8	6.5	5.1	7.9	10.4
<b>Number of Looked After Children at 31 March</b>	63.8	62.2	68.5	69.4	78.4
<b>Admissions to Care during year ended 31 March</b>	19.5	18.9	29.3	21.2	26.4
<b>Discharges from Care during year ended 31 March</b>	16.9	19.8	21.3	19.1	12.6
<b>Number of Children who Received Respite Care during year ended 31 March</b>	23.3	22.9	30.6	31.6	32.5
<b>Number of Children in Need Referrals during year ended 31 March</b>	565.2	678.8	682.7	614.8	814.2
<b>Number of Children Referred during year ended 31 March</b>	394.7	462.5	504.6	484.3	600.7
<b>Number of Children Referred with a Disability during year ended 31 March</b>	21.2	20.2	19.3	15.9	20.6

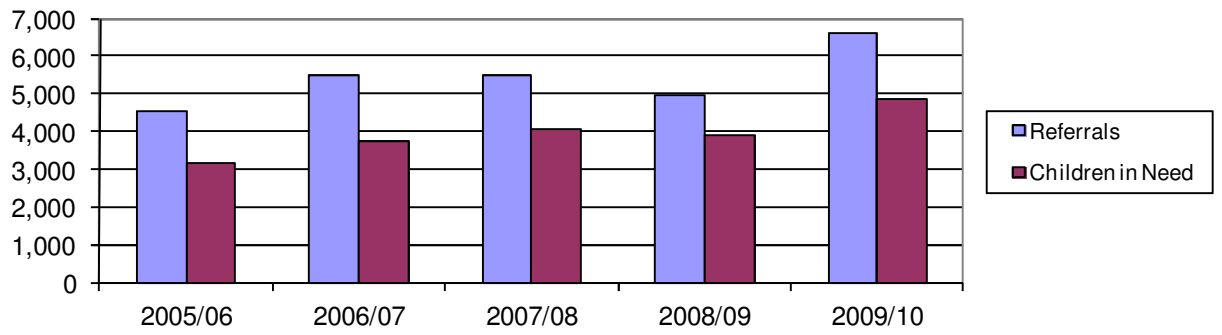
**The Number of Children on the Child Protection Register at 31 March in Comparison with Registrations, De-registrations and Re-registrations for year ended 31 March**



**The Number of Looked After Children at 31 March in Comparison to Admissions to Care, Discharges from Care and the Number of Children who Received Respite Care for year ended 31 March**



**The Number of Children in Need Referrals in Comparison to the Number of Children Referred for Year ended 31 March**



### Southern Health and Social Care Trust Trends 2005/06 – 2009/10

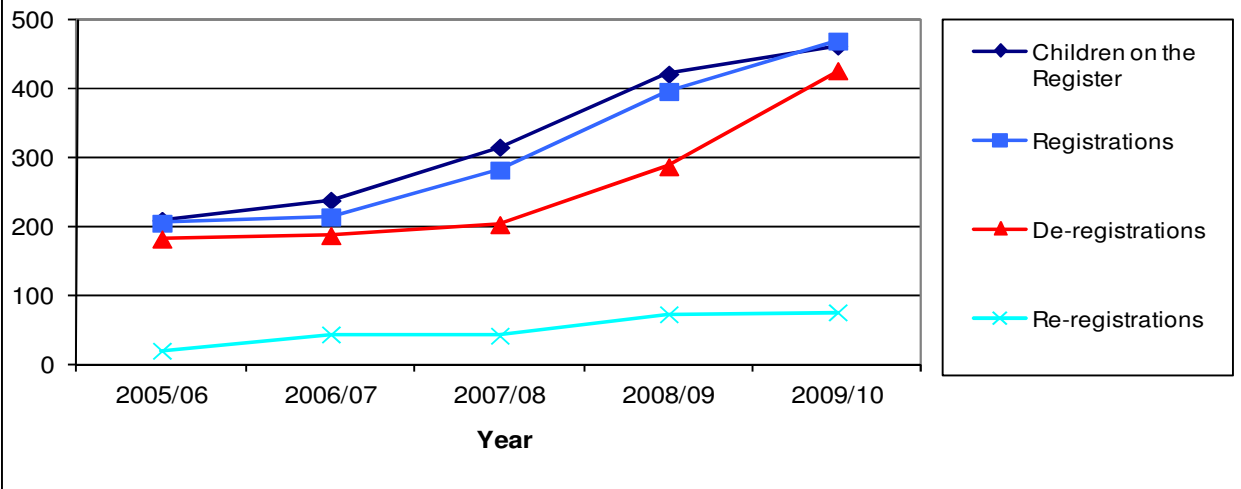
**Table 1: Southern Health and Social Care Trust Trends**

	2005/06	2006/07	2007/08	2008/09	2009/10
<b>Number of Children on Child Protection Register at 31 March</b>	208	237	314	420	461
<b>Number of Child Protection Registrations during year ended 31 March</b>	204	213	281	395	468
<b>Number of Child Protection De-registrations during year ended 31 March</b>	181	186	202	286	425
<b>Number of Child Protection Re-registrations at 31 March</b>	19	43	41	72	75
<b>Number of Looked After Children at 31 March</b>	379	341	356	370	403
<b>Admissions to Care during year ended 31 March</b>	114	119	176	228	177
<b>Discharges from Care during year ended 31 March</b>	123	159	161	158	161
<b>Number of Children who Received Respite Care during year ended 31 March</b>	170	148	163	142	178
<b>Number of Children in Need Referrals during year ended 31 March</b>	5,758	6,060	5,372	5,858	6,021
<b>Number of Children Referred during year ended 31 March</b>	4,176	4,498	4,343	4,543	4,912
<b>Number of Children Referred with a Disability during year ended 31 March</b>	247	134	93	108	63

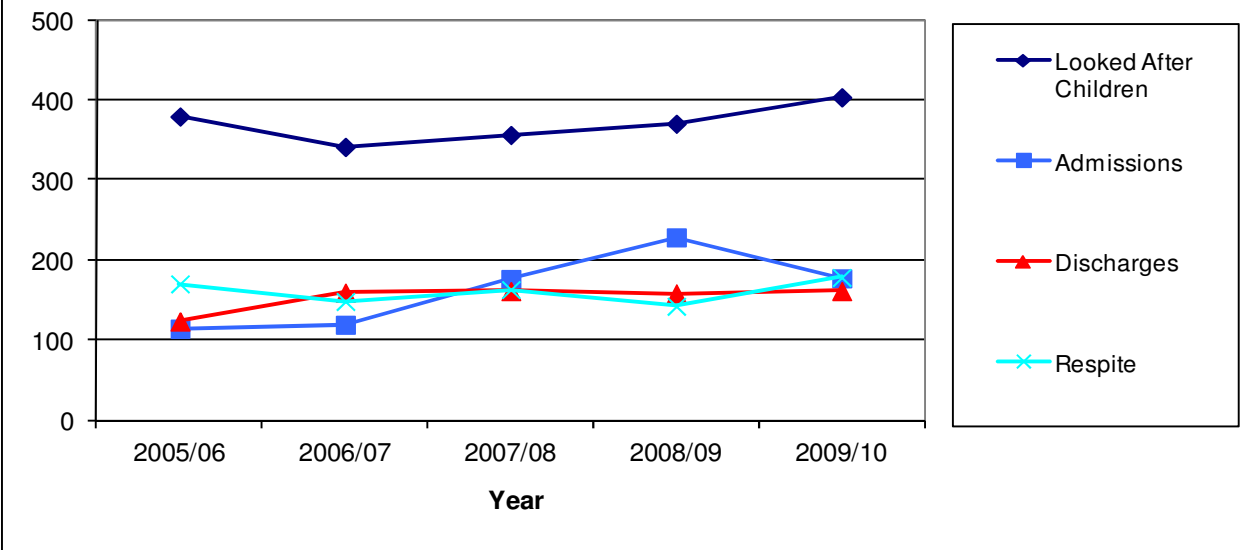
**Table 2: Southern Health and Social Care Trust Trends per 10,000 of the Population under 18**

	2005/06	2006/07	2007/08	2008/09	2009/10
<b>Number of Children on Child Protection Register at 31 March</b>	23.4	26.4	34.6	46.0	50.4
<b>Number of Child Protection Registrations during year ended 31 March</b>	23.0	23.7	31.0	43.2	51.2
<b>Number of Child Protection De-registrations during year ended 31 March</b>	20.4	20.7	22.3	31.3	46.5
<b>Number of Child Protection Re-registrations at 31 March</b>	2.1	4.8	4.5	7.9	8.2
<b>Number of Looked After Children at 31 March</b>	42.7	37.9	39.3	40.5	44.1
<b>Admissions to Care during year ended 31 March</b>	12.9	13.2	19.4	24.9	19.4
<b>Discharges from Care during year ended 31 March</b>	13.9	17.7	17.8	17.3	17.6
<b>Number of Children who Received Respite Care during year ended 31 March</b>	19.2	16.5	18.0	15.5	19.5
<b>Number of Children in Need Referrals during year ended 31 March</b>	649.1	674.3	592.5	641.0	658.8
<b>Number of Children Referred during year ended 31 March</b>	470.8	500.5	479.0	497.1	537.5
<b>Number of Children Referred with a Disability during year ended 31 March</b>	27.8	14.9	10.3	11.8	6.9

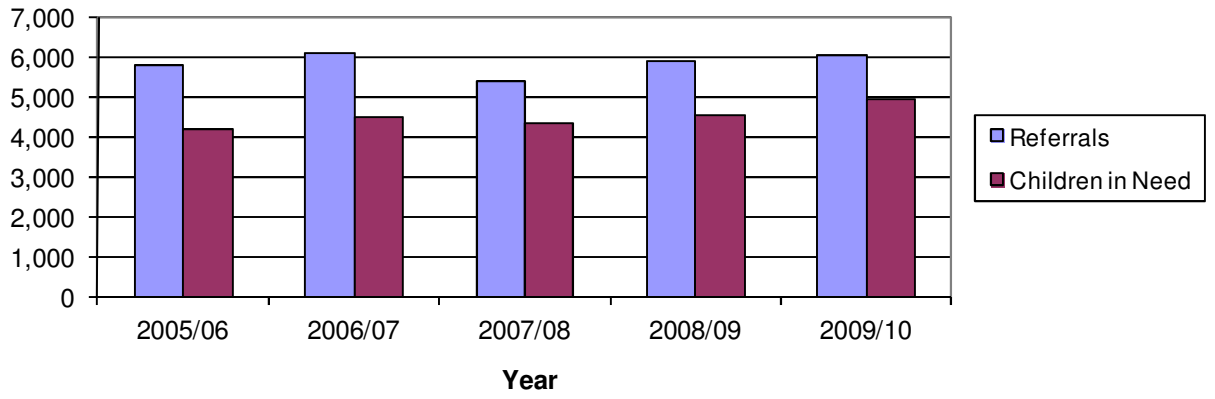
**The Number of Children on the Child Protection Register at 31 March in Comparison with Registrations, De-registrations and Re-registrations for year ended 31 March**



**The Numbers of Looked After Children at 31 March in Comparison to Admissions to Care, Discharges from Care and the Number of Children who received Respite Care for year ended 31 March**



**The Number of Children in Need Referrals in Comparison to the Number of Children Referred for year ended 31 March**



## Western Health and Social Care Trust Trends 2005/06– 2009/10

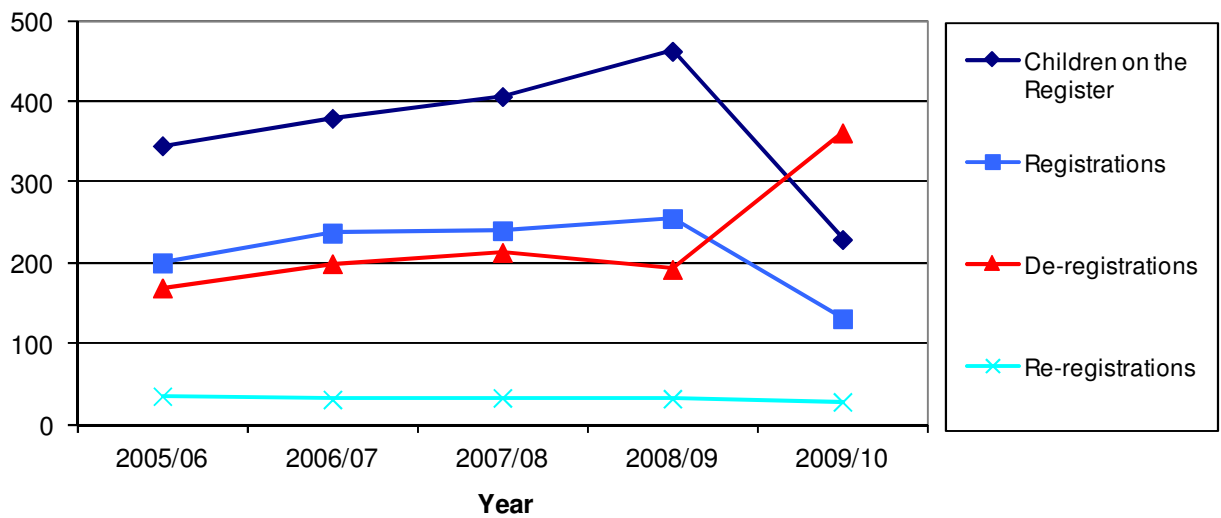
**Table 1: Western Health and Social Care Trust Trends**

	2005/06	2006/07	2007/08	2008/09	2009/10
<b>Number of Children on Child Protection Register at 31 March</b>	345	379	406	462	229
<b>Number of Child Protection Registrations during year ended 31 March</b>	200	237	240	255	131
<b>Number of Child Protection De-registrations during year ended 31 March</b>	169	199	213	192	361
<b>Number of Child Protection Re-registrations at 31 March</b>	35	31	33	32	28
<b>Number of Looked After Children at 31 March</b>	427	427	426	425	422
<b>Admissions to Care during year ended 31 March</b>	129	58	122	121	68
<b>Discharges from Care during year ended 31 March</b>	153	50	127	95	84
<b>Number of Children who Received Respite Care during year ended 31 March</b>	95	58	100	96	115
<b>Number of Children in Need Referrals during year ended 31 March</b>	4,078	5,253	4,735	4,920	4,809
<b>Number of Children Referred during year ended 31 March</b>	3,079	3,652	3,383	3,900	3,767
<b>Number of Children Referred with a Disability during year ended 31 March</b>	353	369	316	270	231

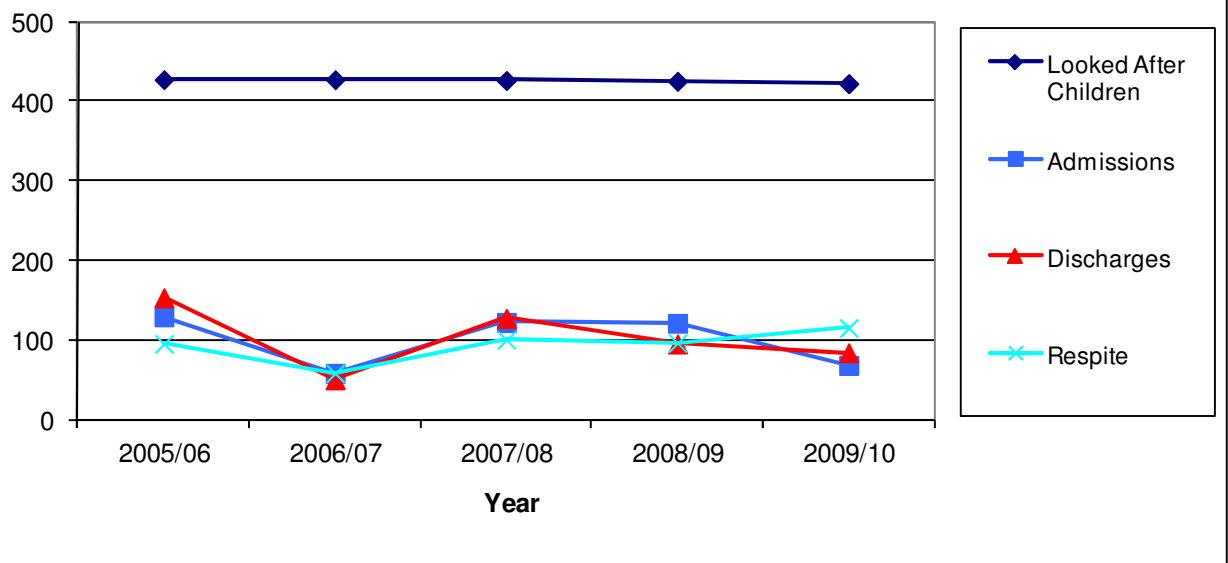
**Table 2: Western Health and Social Care Trust Trends per 10,000 of the Population under 18**

	2005/06	2006/07	2007/08	2008/09	2009/10
<b>Number of Children on Child Protection Register at 31 March</b>	44.5	49.2	52.9	60.3	29.9
<b>Number of Child Protection Registrations during year ended 31 March</b>	25.8	30.7	31.2	33.3	17.1
<b>Number of Child Protection De-registrations during year ended 31 March</b>	21.8	25.8	27.7	25.1	47.1
<b>Number of Child Protection Re-registrations at 31 March</b>	4.5	4.0	4.3	4.2	3.7
<b>Number of Looked After Children at 31 March</b>	55.0	55.4	55.5	55.5	55.1
<b>Admissions to Care during year ended 31 March</b>	16.6	7.5	15.9	15.8	8.9
<b>Discharges from Care during year ended 31 March</b>	19.7	6.5	16.5	12.4	11.0
<b>Number of Children who Received Respite Care during year ended 31 March</b>	12.2	7.5	13.0	12.5	15.0
<b>Number of Children in Need Referrals during year ended 31 March</b>	525.7	681.3	616.4	641.9	627.4
<b>Number of Children Referred during year ended 31 March</b>	397.0	473.6	440.4	508.8	491.5
<b>Number of Children Referred with a Disability during year ended 31 March</b>	45.5	47.9	41.1	35.2	30.1

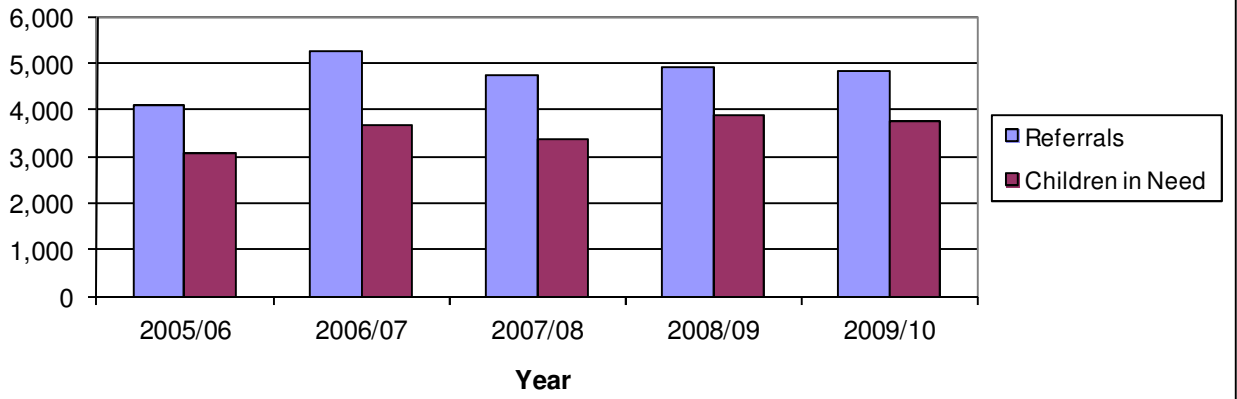
**The Number of Children on the Child Protection Register at 31 March in Comparison with Registrations, De-registrations and Re-registrations for year ended 31 March**



**The Number of Looked After Children at 31 March in Comparison to Admissions to Care, Discharges from Care and the Number of Children who received Respite Care for year ended 31 March**



**The Number of Children in Need Referrals in Comparison to the Number of Children Referred for year ended 31 March**



## Additional Information

**Further information** on Children Order Statistical Trends for Northern Ireland 2004/05 to 2009/10 is available from:

### Iain Waugh

Community Information Branch

Department of Health, Social Services and Public Safety

Annexe 2

Castle Buildings

Stormont

BT4 3SQ



(028) 9052 0599

Fax: (028) 9052 3288

Email: [cib@dhsspsni.gov.uk](mailto:cib@dhsspsni.gov.uk)

This and other statistical bulletins published by Community Information Branch are available to download from the DHSSPS internet at:

[http://www.dhsspsni.gov.uk/index/stats\\_research/stats-cib-3/statistics\\_and\\_research-cib-pub/children\\_statistics.htm](http://www.dhsspsni.gov.uk/index/stats_research/stats-cib-3/statistics_and_research-cib-pub/children_statistics.htm)