

Children Order Statistical Trends for Northern Ireland

2005/06 to 2010/11

This bulletin presents children's social care activity trends for Northern Ireland and Health and Social Care Trusts, for the period from 1 April 2005 to 31 March 2011; areas covered include Child Protection, Looked After Children, and Children in Need. Figures are based on annual Children Order statistical returns provided by HSC Trusts to the DHSSPS. The companion publication to this is, 'Children Order Statistical Tables for Northern Ireland 2010/11'.

Summary Key Findings

Child Protection

1. Between 2006 and 2011, the number of children on the Child Protection Register has increased by 46% (762), from 1,639 to 2,401, respectively;
2. Registrations increased by 82% (957) from 1,166 in 2005/06 to 2,123 in 2010/11;
3. De-Registrations increased by 91% (982) from 1,085 in 2006 to 2,067 in 2011;

Looked After Children

4. At 31 March 2011, there were 2,511 looked after children, down by 4% (95) from 2010, but up 3% (75) since 2006;
5. In recent years, the proportion of looked after children in care for three years or more, fell from 55% in 2007 to 46% in 2011;
6. The number of children in foster care has increased by 10% (175), from 1,687 in 2009/10 to 1,862 in 2010/11; this is in contrast with a 47% (225) fall in children placed with Family during the same period;

Children in Need

7. During 2010/11, 34,447 referrals were made to children's services in Northern Ireland, having increased by 9% (2,754) and 18% (5,289) from 2010 and 2006, respectively;
8. 26,725 children were referred during 2010/11, an increase of 38% (7,334) since 2006 and of 12% (2,799) since 2010.

Theme

Children Order Statistical Trends for Northern Ireland 2005/06 to 2010/11

Issued by

Community Information Branch,
 Information & Analysis Directorate,
 Department of Health,
 Social Services & Public Safety,
 Stormont Estate,
 Belfast, BT4 3SQ

Statistician

Iain Waugh
 (028) 9052 0599

E-mail

cib@dhsspsni.gov.uk

Internet

http://www.dhsspsni.gov.uk/index/stats_research/stats-cib-3/statistics_and_research-cib-pub/children_statistics.htm

| Contents | Page |
|------------------------|------|
| Reader Information | 2 |
| About CIB | 3 |
| List of Tables | 4 |
| List of Figures | 6 |
| Technical Notes | 7 |
| Key Findings | 11 |
| Child Protection | 13 |
| Looked After Children | 24 |
| Children in Need | 34 |
| Children's Homes | 39 |
| Readership Survey | 41 |
| Appendices | 43 |
| Additional Information | 59 |

Reader Information

| | |
|---------------------|---|
| Document Purpose | For information |
| Authors | Iain Waugh, Manny Fitzpatrick |
| Publication Date | 20 January 2012 |
| Target Audience | Social Services Directors, Directors of Children's Services, Chief Executives of HSC Board and Trusts in Northern Ireland, health care professionals, academics and social care stakeholders. |
| Further copies from | CIB@dhsspsni.gov.uk |
| Copyright | This publication is Crown copyright and may be reproduced free of charge in any format or medium. Any material used must be acknowledged, and the title of the publication specified. |
| Internet address | http://www.dhsspsni.gov.uk/index/stats_research/stats-cib-3/statistics_and_research-cib-ub/children_statistics.htm |
| Price | FREE |

About CIB

The purpose of Community Information Branch is to promote effective decision making in children and adult social services by providing quality information and analysis. We collect, analyse and disseminate a wide range of community information that is used to help monitor the delivery of personal social services policy. Information collected by CIB is used to assess Trust performance, for corporate monitoring, policy evaluation, and to respond to parliamentary / assembly questions. Information is widely disseminated through a number of regular key statistical publications and ad hoc reports, details of which are available by clicking on the link below.

http://www.dhsspsni.gov.uk/index/stats_research/stats-cib-3/statistics_and_research-cib-pub/children_statistics.htm

Our Vision and Values

Community Information Branch aims to:

- provide up-to-date, quality information on children and adult social services and community health;
- disseminate findings widely with a view to stimulating debate, promoting effective decision-making and improvement in service provision; and
- be an expert voice on social care information.

List of Tables

| | | Page |
|------------|--|------|
| Table 1.1 | Child Protection Investigations during year ended 31 March (2006 – 2011) | 11 |
| Table 1.2 | Composition of the Child Protection Register by age and gender at 31 March 2011 | 12 |
| Table 1.3 | Composition of the Child Protection Register by age at 31 March (2006 – 2011) | 13 |
| Table 1.4 | Composition of the Child Protection Register by category of abuse at 31 March 2011 | 14 |
| Table 1.5 | Composition of the Child Protection Register by category of abuse at 31 March (2007 – 2011) | 16 |
| Table 1.6 | Composition of the Child Protection Register by length of time on the register and age at 31 March 2011 | 17 |
| Table 1.7 | Composition of the Child Protection Register by length of time on the register at 31 March (2007 – 2011) | 18 |
| Table 1.8 | Child Protection Registrations by gender and age during the year ended 31 March 2011 | 19 |
| Table 1.9 | Child Protection Registrations by age during year ended 31 March (2006 – 2011) | 20 |
| Table 1.10 | Child Protection De-registrations during year ended 31 March (2006 – 2011) | 21 |
| Table 2.1 | Composition of Looked After Children population by age and gender at 31 March 2011 | 22 |
| Table 2.2 | Composition of Looked After Children population by age at 31 March (2006 – 2011) | 23 |
| Table 2.3 | Legal Status of Looked After Children population by gender at 31 March 2011 | 24 |
| Table 2.4 | Legal Status of Looked After Children population at 31 March (2006 – 2011) | 25 |
| Table 2.5 | Placement of Looked After Children at 31 March (2006 – 2011) | 26 |
| Table 2.6 | Length of time in care by age at 31 March 2011 | 27 |
| Table 2.7 | Length of time in care at 31 March (2006 – 2011) | 28 |
| Table 2.8 | Respite care by placement type and age during year ended 31 March 2011 | 29 |
| Table 2.9 | Children who received respite care services by placement type for years ended 31 March (2006 – 2011) | 30 |
| Table 2.10 | Discharges from care by length of time in care and age during year ended 31 March 2011 | 31 |
| Table 3.1 | Referrals, Episodes and Children Referred during years ended 31 March (2006 – 2011) | 32 |

| | | |
|-----------|---|----|
| Table 3.2 | Children Referred by age and gender during the year ended 31 March 2011 | 33 |
| Table 3.3 | Children Referred by age for years ended 31 March (2006 – 2011) | 34 |
| Table 3.4 | Children Referred by Current Status and Age during year ended 31 March 2011 | 35 |
| Table 3.5 | Children Referred by Current Status at 31 March (2006 – 2011) | 36 |
| Table 4.1 | Children’s statutory residential homes at 4 January 2012 | 37 |
| Table 4.2 | Children’s independent residential homes at 4 January 2012 | 38 |

List of Figures

| | | Page |
|------------|---|------|
| Figure 1.1 | Composition of the Child Protection Register by age and gender at 31 March 2011 | 12 |
| Figure 1.2 | Composition of the Child Protection Register by category of abuse at 31 March (2007 – 2011) | 15 |
| Figure 1.3 | Length of time on the Child Protection Register at 31 March 2011 | 17 |
| Figure 1.4 | Child Protection Registrations by age during year ended 31 March 2011 | 19 |
| Figure 1.5 | Child Protection Registrations during year ended 31 March (2006 – 2011) | 20 |
| Figure 1.6 | Child Protection De-registrations during year ended 31 March (2006 – 2011) | 21 |
| Figure 2.1 | Looked After Children population by age 31 March 2011 | 22 |
| Figure 2.2 | Looked After Children at 31 March (2006 – 2011) | 23 |
| Figure 2.3 | Looked After Children by legal status at 31 March 2011 | 24 |
| Figure 2.4 | Looked After Children by placement type at 31 March 2011 | 26 |
| Figure 2.5 | Looked After Children by length of time in care at 31 March 2011 | 27 |
| Figure 2.6 | Respite placements by type during 2010/11 | 30 |
| Figure 3.1 | Referrals and Children Referred during years ended 31 March (2006 – 2011) | 32 |
| Figure 3.2 | Children referred by age at 31 March 2011 | 33 |
| Figure 3.3 | Children Referred for years ended 31 March (2006 – 2011) | 34 |
| Figure 3.4 | Current Status of Referred Children during year ended 31 March 2011 | 35 |
| Figure 4.1 | Places in children’s statutory residential homes by HSC Trust at 4 January 2012 | 36 |

Technical Notes

Data Collection

The information presented in this bulletin derives from Children Order statistical returns and Health and Social Care Board Corporate Parenting returns provided by each of the five Health and Social Care Trusts in Northern Ireland to Community Information Branch in the Department of Health, Social Services & Public Safety.

Children Order and Corporate Parenting returns are aggregated statistical counts relating to Child Protection, Children in Need, Looked After Children and Day Care provision for children. Figures presented in the present bulletin relate to Child Protection, Looked After Children and Children in Need for the period 2005/06 to 2010/11, and breakdowns are available, for example, by age, gender.

Information on Children's Homes was provided by the Regulation and Quality Improvement Authority for Northern Ireland, who are responsible for the registration and inspection of these types of facility.

The 'Children Order Statistical Trends for Northern Ireland' together with its companion publication the 'Children Order Statistical Tables for Northern Ireland' presents a comprehensive series of data on the Children Order in Northern Ireland.

Data Quality

To ensure Children Order returns are accurate, HSC Trusts have agreed that six weeks is sufficient to update relevant information management systems. Returns received by Community Information Branch, are checked to verify that information is consistent both within and across returns.

Trend analyses are used to help monitor annual variations and emerging trends. Queries arising from validation checks are presented to HSC Trusts for clarification, and if required returns may be amended and/or re-submitted.

Children in Need figures; there is a difference between data for Tables, 3.1 and 3.2; information for these tables is taken from Children Order returns N1 and N2, respectively. Table 3.1 gives a figure based on the date a child was referred to Social Services, while Table 3.2 gives a figure based on the date a child's needs have been assessed. The difference between these figures is due to the fact that a referred child may not have their needs assessed before 31 March of the given year. Counts of children in need for some Trusts exclude children whose details are not recorded on SOS CARE.

Planned changes to SOS CARE will facilitate the future accurate recording of placement types for looked after children.

A detailed quality report for children's community statistics is available on our website at:

http://www.dhsspsni.gov.uk/quality_report_for_childrens_statistics-3.pdf

Statement of Administrative Sources

Children Order returns are derived from SOS CARE, which is the main administrative system used to support HSC Trusts in delivering social care services to children. A detailed 'Statement of Administrative Sources' is available on our website at:

http://www.dhsspsni.gov.uk/cib_statement_of_administrative_sources.pdf

Rounding Conventions

Percentages have been rounded to whole numbers and as a consequence some percentages may not sum to 100. 0% may reflect rounding down of values under 0.5%

Disclosure Conventions

To prevent disclosure of the identity of individual children it has been necessary to suppress figures whenever it would be possible to calculate the value of a cell with a low count by means of simple arithmetic. Our policy statement on disclosure and confidentiality is available on our website at:

http://www.dhsspsni.gov.uk/cib_confidentiality_statement.pdf

Data Changes

The use of Health and Social Care Board Corporate Parenting returns in relation to Looked After Children has meant a change in the age ranges of presented data. Figures for Looked After Children in care at 31 March for 2011, now excludes children placed in care for temporary, short-term respite provision. As it has not been possible to rebase historical figures taking account of children in care for respite, comparisons with previous years looked after children counts on 31 March are not on a like for like basis.

Revisions Policy

These data are revised by exception. If this occurs the circumstances of the revision are reported on our website and the dates figures are revised are noted both on the website and within the publication. The full revisions policy for these and other community statistics is published on our website at:

http://www.dhsspsni.gov.uk/cib_revisions_policy.pdf

Main Uses of Data

Data from these publications meet the information needs of a wide range of internal and external users. Within DHSSPS figures from Children Order publications are used by policy officials to monitor the volume of activity, Inter Agency working and reasons for referrals, and to compare the changing characteristics of Looked After Children and children on the Child Protection Register over time.

Related Publications

Details of statistics on similar themes to those detailed within this bulletin and published by other countries in the United Kingdom are outlined below.

England

Children Looked After in England (including adoption and care leavers) year ending 31 March 2011

<http://www.education.gov.uk/rsgateway/DB/SFR/s001026/index.shtml>

Referrals, assessment and children and young people who are the subject of a child protection plan, England - Year ending 31 March 2011

<http://www.education.gov.uk/rsgateway/DB/STR/d001025/index.shtml>

Children in Need in England, including their characteristics and further information on children who were the subject of a child protection plan 2010/11

<http://www.education.gov.uk/rsgateway/DB/STR/d001041/index.shtml>

Wales

Adoptions, Outcomes and Placements for Children Looked After by Local Authorities: Year Ending 31 March 2011 - Wales

<http://wales.gov.uk/topics/statistics/headlines/health2011/110915/?lang=en>

Referrals, Assessments and Social Services for Children, 2010-11

<http://wales.gov.uk/topics/statistics/headlines/health2011/1109073/?lang=en>

Scotland

Child Safety and Wellbeing - Children Looked After - Scotland

<http://www.scotland.gov.uk/Topics/Statistics/Browse/Children/TrendLookedAfter>

Child Safety and Wellbeing - Child Protection – Scotland

<http://www.scotland.gov.uk/Topics/Statistics/Browse/Children/TrendChildProtection>

A National Statistics Publication

The United Kingdom Statistics Authority has designated these statistics as National Statistics, in accordance with the Statistics and Registration Services Act 2007 and signifying compliance with the Code of Practice for Official Statistics.

Designation can be broadly interpreted to mean that the statistics:

- meet identified user needs;
- are well explained and readily accessible;
- are produced according to sound methods; and
- are managed impartially and objectively in the public interest;

Once statistics have been designated as National Statistics it is a statutory requirement that the Code of Practice shall continue to be observed.

User Engagement

If you have any comments on this publication, please complete our questionnaire at:

http://www.dhsspsni.gov.uk/index/stats_research/stats-cib-3/statistics_and_research-user_engagement.htm

or contact:

Iain Waugh

iain.waugh@dhsspsni.gov.uk

Tel: 028 905 20599

Next Release

The next release of these statistics, for the quarter ending 31 March 2012, is scheduled for 11 May 2012. The publication release dates for Health and Social Care statistics in Northern Ireland are available from the DHSSPS website at:

http://www.dhsspsni.gov.uk/index/stats_research/stats-pubs.htm

Key Findings

Child Protection

- The numbers of children on the Child Protection Register increased by 46% (762), from 1,639 in 2006 to 2,401 in 2011; more recently, the register count rose by 2% (44) between 2010 and 2011, from 2,357 to 2,401, respectively;
- The age profile of children on the register has remained relatively constant over the five years to 2011, showing a two percentage point drop in children aged '5-11', which fell from 38% in 2006 to 36% in 2011;
- In the years from 2007 to 2011, the proportion of children on the register for 3 or more years fell from 8% to 5%; during the same period there was a 3 percentage point increase in the proportion of children on the register between 6 months and 1 year from 25% to 28%;
- Since 2007, the proportion of children on the Register due to a combination of Sexual/Emotional/Physical Abuse and Neglect increased by eight percentage points, from 15% in 2007 to 23% in 2011;
- Between 2007 and 2011, the proportion of children Registered due to 'Neglect (only)' decreased by five percentage points, from 32% (569) to 27% (654); in the same period, Physical Abuse increased by eight percentage points, from 20% (357) in 2007 to 28% (675) in 2011;
- Child Protection Investigations increased by 80% (1,711), from 2,129 in 2005/06 to 3,840 in 2010/11; more recently, they increased by 13% (453) from 3,387 in 2009/10, with Joint Protocol Investigations (Social Services with the PSNI) up 12%, from 723 to 810, during the same period;
- Child Protection Registrations from 2005/06 to 2010/11 rose by 82% (957), from 1,166 to 2,123 respectively; increasing by 15% (277) from 2009/10 (1,846) ;
- Child Protection De-Registrations in the five years from 2005/06 to 2010/11, increased by 91% (982) from 1,085 to 2,067, respectively; increasing by 6% (120) from 2009/10 to 2010/11;

Looked After Children

- At 31 March 2011, there were 2,511 looked after children in Northern Ireland, a decrease of 4% (95) from 2010, and an increase of 3% (75) from 2006;
- The age profile of looked after children from 2006 to 2011, indicates a small increase in the proportion of children aged '0 - 4', which rose by 5 percentage points from 16% to 21%, respectively;
- For the five years from 2006 to 2011, the proportion of children subject to 'Care Orders (Articles 50 & 59)' increased by 5 percentage points from 44% (1,066) in 2006 to 49% (1,231) in 2011; for the same period, children subject to 'Deemed Care Order (Paras. 11 & 30)' fell by 10 percentage points from 11% (278) to 1% (32); since 2006, the proportion of children 'Accommodated under Article 21' increased by 3 percentage points from 31% (760) in 2006 to 34% (858) in 2011;

- In recent years, children in care for three years or more fell from 55% in 2007 to 46% in 2011;
- At 31 March 2011, 74% (1,862) of looked after children were in foster care, with 10% (258) in family placements, 10% (239) in residential care, and 6% (152) in 'Other' placement types;
- Residential Care placements decreased 17% (48) from 287 in 2010 to 239 in 2011, compared with an increase of 2% (3) and 10% (175) in placements in 'Other Accommodation' and Foster Care respectively;
- Between 2006 and 2011, the proportion of children in care for less than 3 months has increased by 4 percentage points from 4% to 8% respectively. The same time period has seen a 5 percentage point increase in the proportion of children in care for between 3 months and 1 year from 12% to 17%;
- Of 773 respite placements in 2010/11, 79% (607) were in foster care, 17% (129) were in residential care, 4% (31) were family placements, and 1% (6) were 'Other' placement types;
- Foster Care placements have remained relatively constant between 2006 and 2011; during this period, proportions in residential placements rose 7 percentage points, while those in Family placements fell 3 percentage points, to 17% and 4% respectively;

Children in Need

- During 2010/11, 34,447 referrals were made to children's services in Northern Ireland, having increased by 9% (2,754) and 18% (5,289), from 2010 and 2006, respectively;
- Of 26,725 children referred to children's services in 2010/11, 26,380 (99%) had been assessed by 31 March 2011; figures for children in need have risen by 37% (7,079) from 2006, and by 11% (2,573) since 2010;
- Analyses of children in need by age for 2011, indicate 34% (8,991) were aged '5–11', 30% (7,933) '0–4', 24% (6,369) were '12–15', and 12% (3,087) were aged 16 and over; the proportion of children in need aged '0–4', has increased by 4 percentage points since 2007, from 26% (5,629) to 30% (7,933) in 2011. For the same period, the proportion of children aged 12–15 dropped 3 percentage points, from 27% (5,665) to 24% (6,369).
- 80% (21,166) of all children referred to Social Services were allocated for further action of either a service or assessment, compared to 11% (3,032) of children referred who required no further action due to work complete;
- Between 2006 and 2011 the proportion of children referred 'Allocated for Further Action' increased by 16 percentage points, from 64% to 80% respectively; during the same time period the proportion of children requiring 'No Further Action due to Unmet Need' decreased by 16 percentage points from 27% to 11%;

Child Protection

Child Protection Investigations

Child Protection Investigations are classified using one of the following categories:

- Joint Protocol¹
- Social Workers
- PSNI

Table 1.1: Child Protection Investigations completed during year ended 31 March (2006 – 2011)

| Investigation category | 2006 | | 2007 | | 2008 | | 2009 | | 2010 | | 2011 | |
|------------------------|--------------|------------|--------------|------------|--------------|------------|--------------|------------|--------------|------------|--------------|------------|
| | No. | % | No. | % | No. | % | % | % | No. | % | No. | % |
| Joint Protocol | 293 | 14 | 316 | 14 | 362 | 16 | 572 | 20 | 723 | 21 | 810 | 21 |
| Social workers | 1,811 | 85 | 1,966 | 85 | 1,905 | 83 | 2,231 | 78 | 2,620 | 77 | 2,966 | 77 |
| Police | 25 | 1 | 38 | 2 | 39 | 2 | 53 | 2 | 44 | 1 | 64 | 2 |
| Total | 2,129 | 100 | 2,320 | 100 | 2,306 | 100 | 2,856 | 100 | 3,387 | 100 | 3,840 | 100 |

Main Points

- Of the 3,840 Child Protection Investigations in 2010/11, 21% were Joint Protocol (Social Services and PSNI);
- Investigations have increased by 13% (453) from 3,387 in 2009/10 to 3,840 in 2010/11, with Joint Protocol Investigations up by 12% in the same period, from 723 to 810 respectively;
- Between 2005/06 and 2010/11, Child Protection Investigations increased by 80% (1,711), from 2,129 to 3,840 respectively;

¹ Joint Protocol Investigations are carried out jointly by social workers and the PSNI.

The Child Protection Register

Table 1.2: Composition of the Child Protection Register by age and gender at 31 March 2011

| Age Group (years) | Boys | | Girls | | Total | |
|-------------------|--------------|------------|--------------|------------|--------------|------------|
| | No. | % | No. | % | No. | % |
| <1 | 100 | 8 | 104 | 9 | 204 | 8 |
| 1-4 | 328 | 28 | 316 | 26 | 644 | 27 |
| 5-11 | 449 | 38 | 423 | 35 | 872 | 36 |
| 12-15 | 247 | 21 | 282 | 23 | 529 | 22 |
| 16 & over | 66 | 6 | 86 | 7 | 152 | 6 |
| Total | 1,190 | 100 | 1,211 | 100 | 2,401 | 100 |

Main Points

- At 31 March 2011, there were 2,401 children on Child Protection Registers in Northern Ireland, an increase of 2% (44) from 2010 (2,357);
- Of the 2,401 children on Child Protection Registers, 50% were boys and 50% were girls;
- 8% were under 1 year old, and 6% were 16 or older;
- Almost two-fifths (36%) of children on the Register were aged 5-11

Figure 1.1: Composition of the Child Protection Register by age at 31 March 2011

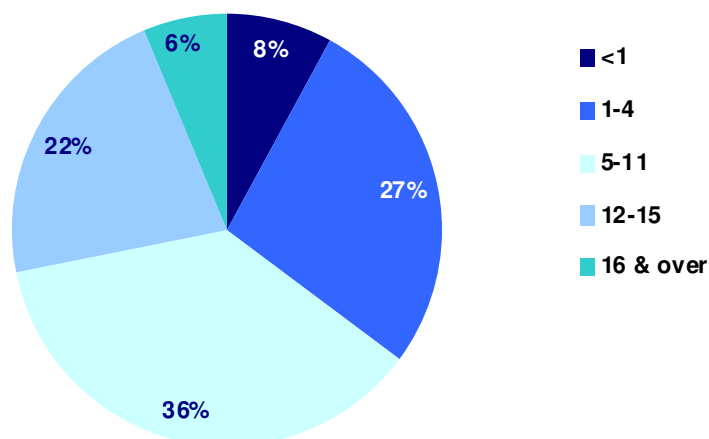


Table 1.3: Composition of the Child Protection Register by age at 31 March (2006 – 2011)

| Age Group (years) | 2006 | | 2007 | | 2008 | | 2009 | | 2010 | | 2011 | |
|-------------------|--------------|------------|--------------|------------|--------------|------------|--------------|------------|--------------|------------|--------------|------------|
| | No. | % | No. | % | No. | % | No. | % | No. | % | No. | % |
| <1 | 145 | 9 | 148 | 8 | 167 | 8 | 176 | 7 | 196 | 8 | 204 | 8 |
| 1-4 | 434 | 26 | 449 | 25 | 525 | 25 | 590 | 24 | 625 | 27 | 644 | 27 |
| 5-11 | 623 | 38 | 656 | 36 | 751 | 36 | 951 | 38 | 858 | 36 | 872 | 36 |
| 12-15 | 344 | 21 | 423 | 23 | 484 | 23 | 596 | 24 | 507 | 22 | 529 | 22 |
| 16 & over | 93 | 6 | 129 | 7 | 144 | 7 | 175 | 7 | 171 | 7 | 152 | 6 |
| Total | 1,639 | 100 | 1,805 | 100 | 2,071 | 100 | 2,488 | 100 | 2,357 | 100 | 2,401 | 100 |

Main Points

- From 2009 to 2010, numbers on the Register in age bands 5-11 and 12-15 increased by 2% (14) and 4% (22) respectively;
- Within these age bands, the numbers of girls increased by 4% and 8% respectively, compared with a decrease of 1% and an increase of less than 1% for boys;
- Between 2006 and 2011, the number of children on the Register increased by 46%, (762) from 1,639 to 2,401 respectively;
- The age profile of children on the register has remained relatively unchanged, with a 2 percentage point decrease in the numbers of children aged 5-11, from 38% in 2006 to 36% in 2011;

Category of Abuse

The category of abuse under which each child is considered to be at risk is decided at the Child Protection Case Conference. When agreement is reached that the child is at risk and protection is necessary, each child is recorded under the category that best reflects the nature of the risk.

The four main categories used are: neglect, physical abuse, sexual abuse and emotional abuse. For more complex cases mixed categories are used e.g. 'neglect and physical abuse' or 'physical and sexual abuse'.

Neglect:

The actual or likely persistent or severe neglect of a child, or the failure to protect a child from exposure to any kind of danger, including cold and starvation, or persistent failure to carry out important aspects of care, resulting in significant impairment of the child's health or development, including non-organic failure to thrive.

Physical Abuse:

Actual or likely deliberate physical injury to a child, or wilful or neglectful failure to prevent physical injury or suffering to a child including deliberate poisoning, suffocation or Munchausen syndrome by proxy.

Sexual Abuse:

Actual or likely exploitation of children or adolescents. The child may be dependent and/or developmentally immature.

Emotional Abuse:

Actual or likely, persistent or severe emotional ill treatment or rejection resulting in severe adverse effects on the emotional, physical and/or behavioural development of a child. All abuse involves some emotional ill treatment. This category should be used where it is the main or only form of abuse.

Table 1.4: Composition of the Child Protection Register by category of abuse at 31 March 2011¹

| Category of Abuse | Potential | Suspected | Confirmed | Total |
|---|--------------|------------|------------|--------------|
| Neglect, Physical Abuse and Sexual Abuse | - | - | - | 28 |
| Neglect and Physical Abuse | | | | |
| Main category – neglect | 24 | 5 | 42 | 71 |
| Main category - physical abuse | 271 | 20 | 29 | 320 |
| Neglect and Sexual Abuse | | | | |
| Main category - neglect | - | - | 6 | 12 |
| Main category - sexual abuse | 38 | - | - | 46 |
| Physical Abuse and Sexual Abuse | 54 | - | - | 73 |
| Neglect (only) | 302 | 27 | 325 | 654 |
| Physical Abuse (only) | 558 | 27 | 90 | 675 |
| Sexual Abuse (only) | 193 | 18 | 16 | 227 |
| Emotional Abuse (only) | 180 | 37 | 78 | 295 |
| Total | 1,644 | 147 | 610 | 2,401 |
| % | 68 | 6 | 25 | 100 |

¹ - cell counts have been suppressed to avoid personal disclosure

Main Points

- At 31 March 2011, 27% (654) of children on the Child Protection Register were assessed to be at risk of Neglect (only), 28% (675) at risk of Physical Abuse (only), 12% (295) at risk of Emotional Abuse (only), 9% (227) at risk of Sexual Abuse (only) and 23% (550) at risk of more than one type of abuse
- Over two thirds 68% (1,644) of children on the register were assessed as potential cases of abuse, with 25% (610) confirmed cases of abuse, and 6% (147) of cases where abuse was suspected
- Since 2007, the proportion of children on the register due to a combination of sexual/emotional/physical abuse and neglect has increased by eight percentage points from 15% in 2007 to 23% in 2011

Figure 1.2: Composition of the Child Protection Register by category of abuse at 31 March (2007 - 2011)

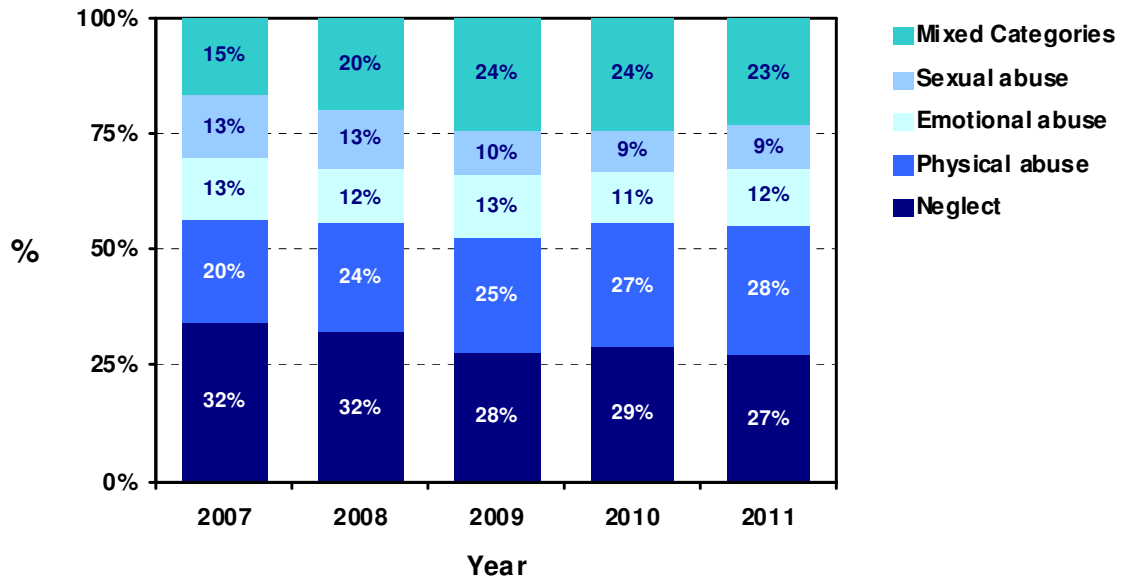


Table 1.5: Composition of the Child Protection Register by category of abuse at 31 March (2007 - 2011)

| Category of Abuse ¹ | 2007 | | 2008 | | 2009 | | 2010 | | 2011 | |
|---|--------------|------------|--------------|------------|--------------|------------|--------------|------------|--------------|------------|
| | No. | % | No. | % | No. | % | No. | % | No. | % |
| Neglect, Physical Abuse and Sexual Abuse | 40 | 2 | 42 | 2 | 72 | 3 | 60 | 3 | 28 | 1 |
| Neglect and Physical Abuse | | | | | | | | | | |
| Main category - neglect | 69 | 4 | 61 | 3 | 123 | 5 | 81 | 3 | 71 | 3 |
| Main category - physical abuse | 176 | 10 | 162 | 8 | 244 | 10 | 287 | 12 | 320 | 13 |
| Neglect and Sexual Abuse | | | | | | | | | | |
| Main category - neglect | 16 | 1 | 23 | 1 | 35 | 1 | 30 | 1 | 12 | 0 |
| Main category - sexual abuse | 43 | 2 | 57 | 3 | 54 | 2 | 48 | 2 | 46 | 2 |
| Physical Abuse and Sexual Abuse | | | | | | | | | | |
| Main category - physical abuse | 40 | 2 | 53 | 3 | 61 | 2 | 56 | 2 | 57 | 2 |
| Main category - sexual abuse | 44 | 2 | 10 | 0 | 13 | 1 | 14 | 1 | 16 | 1 |
| Neglect (only) | 569 | 32 | 665 | 32 | 706 | 28 | 682 | 29 | 654 | 27 |
| Physical Abuse (only) | 357 | 20 | 488 | 24 | 618 | 25 | 627 | 27 | 675 | 28 |
| Sexual Abuse (only) | 225 | 12 | 244 | 12 | 242 | 10 | 208 | 9 | 227 | 9 |
| Emotional Abuse (only) | 226 | 13 | 266 | 13 | 320 | 13 | 264 | 11 | 295 | 12 |
| Total | 1,805 | 100 | 2,071 | 100 | 2,488 | 100 | 2,357 | 100 | 2,401 | 100 |

Main Points

- The number of children on the register due to a combination of sexual/emotional/physical abuse and neglect has risen 29% (122) since 2007, however it has fallen 5% (26) since 2010
- Between 2007 and 2011, the proportion of children registered under 'Neglect (only)' decreased by five percentage points, from 32% (569) to 27% (654)
- In the same period, the proportion of children registered due to 'Physical Abuse (only)' has increased by eight percentage points, from 20% (357) in 2007 to 28% (675) in 2011

Length of Time on the Child Protection Register

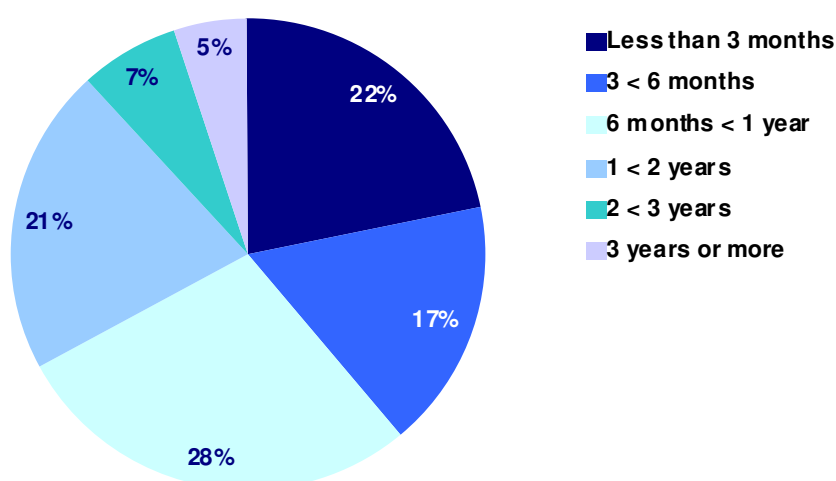
Table 1.6: Composition of the Child Protection Register by length of time on the register and age at 31 March 2011¹

| Length of time on register | Age Group (years) | | | | | | | | | | | |
|----------------------------|-------------------|------------|------------|------------|------------|------------|------------|------------|------------|------------|--------------|------------|
| | <1 | | 1-4 | | 5-11 | | 12-15 | | 16+ | | Total | |
| | No. | % | No. | % | No. | % | No. | % | No. | % | No. | % |
| Less than 3 months | 68 | 33 | 119 | 18 | 181 | 21 | 134 | 25 | 29 | 19 | 531 | 22 |
| 3 months < 6 months | - | - | 99 | 15 | 142 | 16 | 84 | 16 | 22 | 14 | 413 | 17 |
| 6 months < 1 year | 68 | 33 | 182 | 28 | 240 | 28 | 134 | 25 | 40 | 26 | 664 | 28 |
| 1 year < 2 years | - | - | 187 | 29 | 183 | 21 | 94 | 18 | 32 | 21 | 498 | 21 |
| 2 years < 3 years | 0 | 0 | 34 | 5 | 72 | 8 | 46 | 9 | 11 | 7 | 163 | 7 |
| 3 years or more | 0 | 0 | 23 | 4 | 54 | 6 | 37 | 7 | 18 | 12 | 132 | 5 |
| Total | 204 | 100 | 644 | 100 | 872 | 100 | 529 | 100 | 152 | 100 | 2,401 | 100 |

Main Points

- At 31 March 2011, 67% of children had been registered for less than one year, with 5% registered for three years or longer
- Of the 132 children on the register for three years or longer, 41% (54) were aged 5-11 and 28% (37) were aged 12-15
- Just over a third (35%) of children aged 5-11 had been on the register for one year or longer

Figure 1.3: Length of time on the Child Protection Register at 31 March 2011



¹ - cell counts have been suppressed to avoid personal disclosure

Table 1.7: Composition of the Child Protection Register by length of time on the register at 31 March (2007 - 2011)

| Length of time on the register | 2007 | | 2008 | | 2009 | | 2010 | | 2011 | |
|--------------------------------|--------------|------------|--------------|------------|--------------|------------|--------------|------------|--------------|------------|
| | No. | % | No. | % | No. | % | No. | % | No. | % |
| Less than 3 months | 352 | 20 | 322 | 16 | 490 | 19 | 415 | 18 | 531 | 22 |
| 3 months < 6 months | 289 | 16 | 360 | 17 | 410 | 16 | 425 | 18 | 413 | 17 |
| 6 months < 1 year | 452 | 25 | 521 | 25 | 599 | 24 | 579 | 25 | 664 | 28 |
| 1 year < 2 years | 431 | 24 | 536 | 26 | 585 | 24 | 570 | 24 | 498 | 21 |
| 2 years < 3 years | 143 | 8 | 208 | 10 | 240 | 10 | 192 | 8 | 163 | 7 |
| 3 years or more | 138 | 8 | 124 | 6 | 164 | 7 | 176 | 7 | 132 | 5 |
| Total | 1,805 | 100 | 2,071 | 100 | 2,488 | 100 | 2,357 | 100 | 2,401 | 100 |

Main Points

- Between 2007 and 2011, the proportion of children on the register for 3 years or more, fell from 8% to 5% respectively;
- In the five year period from 2007 to 2011, the proportion of children on the register between 6 months and 1 year rose by 3 percentage points from 25% to 28% respectively;

Child Protection Registrations

Table 1.8: Child Protection Registrations by gender and age during the year ended 31 March 2011

| Age Group (years) | Boys | | Girls | | Total | |
|-------------------|--------------|------------|--------------|------------|--------------|------------|
| | No. | % | No. | % | No. | % |
| <1 | 181 | 17 | 167 | 16 | 348 | 16 |
| 1-4 | 270 | 25 | 253 | 24 | 523 | 25 |
| 5-11 | 364 | 34 | 351 | 33 | 715 | 34 |
| 12-15 | 212 | 20 | 235 | 22 | 447 | 21 |
| 16 & over | 34 | 3 | 56 | 5 | 90 | 4 |
| Total | 1,061 | 100 | 1,062 | 100 | 2,123 | 100 |

Main Points

- There were 2,123 registrations onto the Child Protection Register in 2010/11, with 50% boys and 50% girls registered during this period;
- Comparison by gender, indicates girls registered during 2009/10 tended to be slightly older than boys, with 27% of girls aged 12 or over, compared with 23% of boys;
- Just over two fifths (41%) of registrations were in respect of children under 5 years old;

Figure 1.4: Child Protection Registrations by age during year ended 31 March 2011

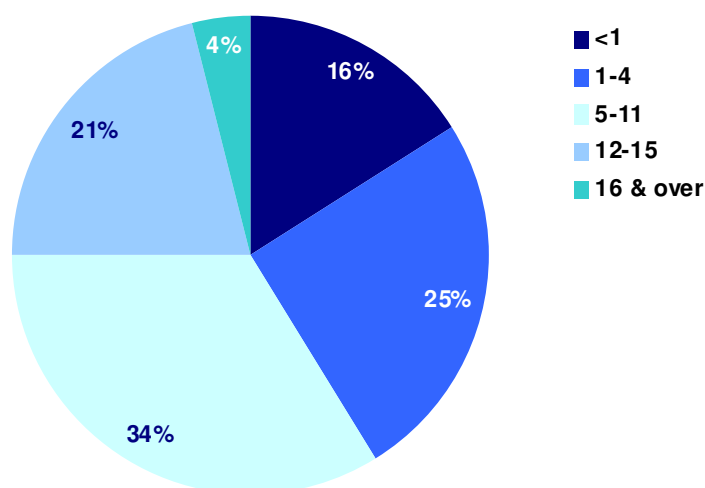


Table 1.9: Child Protection Registrations by age during year ended 31 March (2006 – 2011)

| Age Group (years) | 2006 | | 2007 | | 2008 | | 2009 | | 2010 | | 2011 | |
|-------------------|--------------|------------|--------------|------------|--------------|------------|--------------|------------|--------------|------------|--------------|------------|
| | No. | % | No. | % | No. | % | No. | % | No. | % | No. | % |
| <1 | 209 | 18 | 231 | 18 | 253 | 17 | 276 | 15 | 337 | 18 | 348 | 16 |
| 1-4 | 287 | 25 | 278 | 21 | 359 | 24 | 412 | 23 | 449 | 24 | 523 | 25 |
| 5-11 | 399 | 34 | 446 | 34 | 540 | 36 | 655 | 36 | 627 | 34 | 715 | 34 |
| 12-15 | 237 | 20 | 290 | 22 | 310 | 21 | 410 | 22 | 360 | 20 | 447 | 21 |
| 16 & over | 34 | 3 | 60 | 5 | 35 | 2 | 76 | 4 | 73 | 4 | 90 | 4 |
| Total | 1,166 | 100 | 1,305 | 100 | 1,497 | 100 | 1,829 | 100 | 1,846 | 100 | 2,123 | 100 |

Main Points

- Registrations onto the Register increased by 15% (277), from 1,846 in 2010 to 2,123 in 2011;
- Between 2006 and 2011, registrations increased by 82% (957) from 1,166 to 2,123 respectively;
- There has been little change in the age profile of registrations between 2006 and 2010;

Figure 1.5: Child Protection Registrations during year ended 31 March (2006 – 2011)

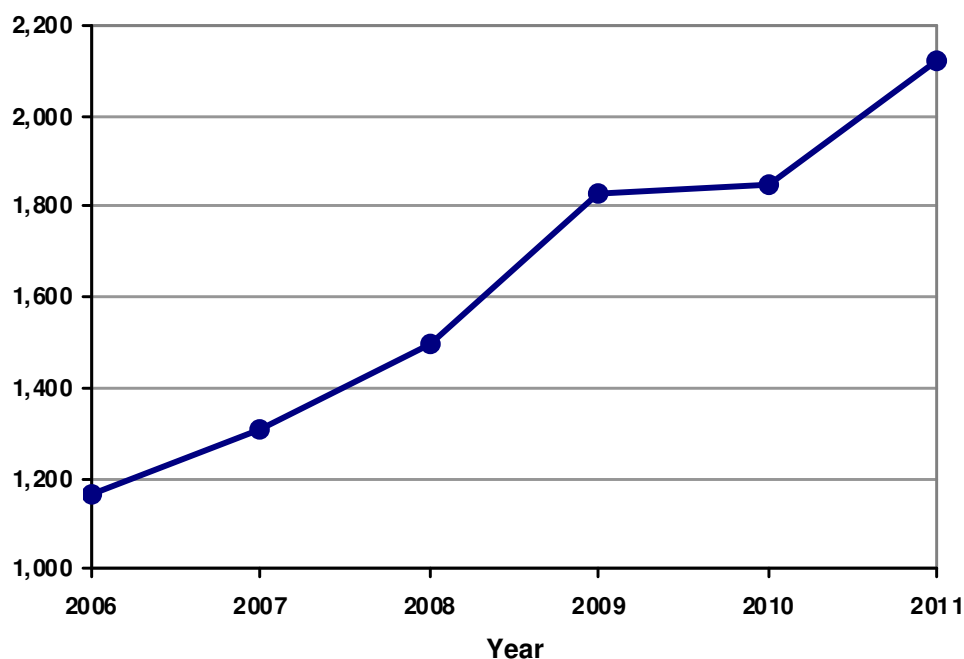


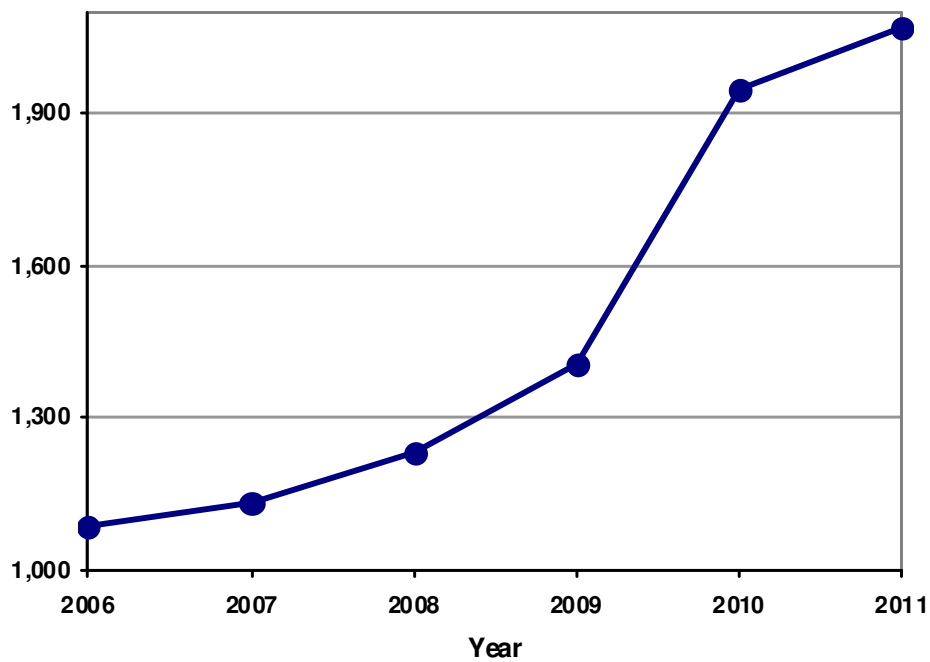
Table 1.10: Child Protection De-registrations during year ended 31 March (2006 – 2011)

| Year | 2006 | 2007 | 2008 | 2009 | 2010 | 2011 |
|------------------|-------|-------|-------|-------|-------|-------|
| De-Registrations | 1,085 | 1,133 | 1,230 | 1,404 | 1,947 | 2,067 |

Main Points

- De-Registrations increased by 6% (120), from 1,947 in 2010 to 2,067 in 2011;
- Between 2006 and 2011, de-registrations rose 91%, from 1,085 to 2,067 respectively;

Figure 1.6: Child Protection De-registrations during year ended 31 March (2006 – 2011)



Looked After Children

A child becomes looked after if they are accommodated for a continuous period of twenty-four hours or more by Health and Social Care Trusts in the exercise of their social care function.

Looked after children

Table 2.1: Looked after children by age and gender at 31 March 2011

| Age (years) | Boys | | Girls | | Total | |
|-----------------|--------------|------------|--------------|------------|--------------|------------|
| | No. | % | No. | % | No. | % |
| 0-4 | 291 | 22 | 243 | 20 | 534 | 21 |
| 5-11 | 397 | 31 | 346 | 29 | 743 | 30 |
| 12-15 | 417 | 32 | 435 | 36 | 852 | 34 |
| 16 or older | 196 | 15 | 186 | 15 | 382 | 15 |
| All Ages | 1,301 | 100 | 1,210 | 100 | 2,511 | 100 |

Main Points

- At 31 March 2010, 2,511 children were looked after children in Northern Ireland;
- By age, 21% (534) were aged 0 - 4, and 15% (382) were 16 years or older;
- Over half (52%) looked after children were boys, and 48% were girls;
- The age profile of boys and girls were similar, with a slightly higher proportion of girls (36%) than boys (32%) aged 12 - 15;

Figure 2.1: Looked after children by age at 31 March 2011

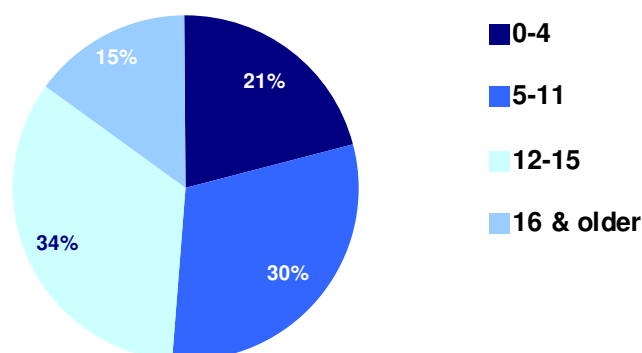


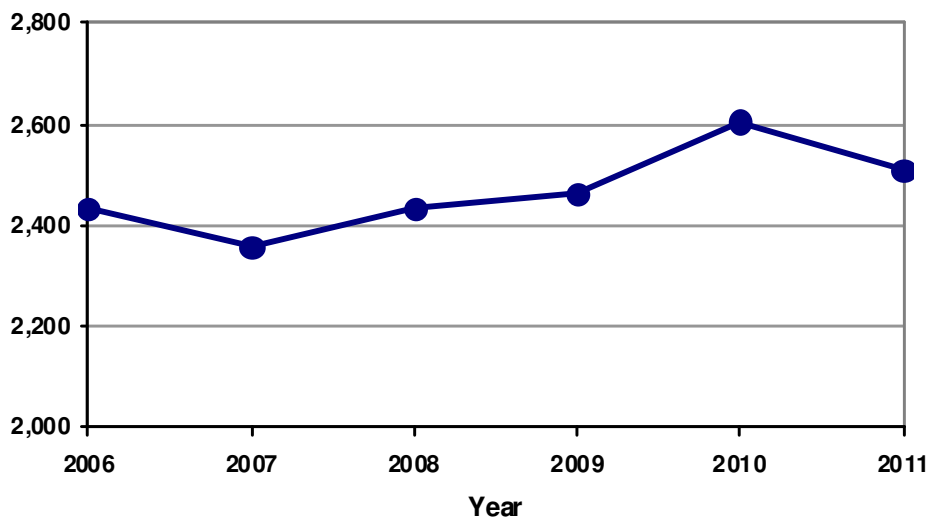
Table 2.2: Looked after children by age at 31 March (2006 – 2011)

| Age (years) | 2006 | | 2007 | | 2008 | | 2009 | | 2010 | | 2011 | |
|--------------|--------------|------------|--------------|------------|--------------|------------|--------------|------------|--------------|------------|--------------|------------|
| | No. | % | No. | % | No. | % | No. | % | No. | % | No. | % |
| 0-4 | 394 | 16 | 362 | 16 | 413 | 17 | 449 | 18 | 519 | 20 | 534 | 21 |
| 5-11 | 830 | 34 | 765 | 32 | 782 | 32 | 753 | 31 | 791 | 30 | 743 | 30 |
| 12-15 | 763 | 31 | 765 | 32 | 733 | 30 | 760 | 31 | 811 | 31 | 852 | 34 |
| 16 or over | 449 | 18 | 464 | 20 | 505 | 21 | 501 | 20 | 485 | 19 | 382 | 15 |
| Total | 2,436 | 100 | 2,356 | 100 | 2,433 | 100 | 2,463 | 100 | 2,606 | 100 | 2,511 | 100 |

Main Points

- At 31 March 2010, there were 2,511 looked after children in Northern Ireland, down by 4% (95) from 2009, and up 3% (75) since 2006;
- The age profile of looked after children from 2006 to 2011, indicates an increase in the proportion in aged '0-4', which rose by 5 percentage points from 16% to 21% respectively;
- The proportion of children aged '5-11' fell from 34% in 2006 to 30% in 2011

Figure 2.2: Looked after children at 31 March (2006 – 2011)



Looked after children by legal status

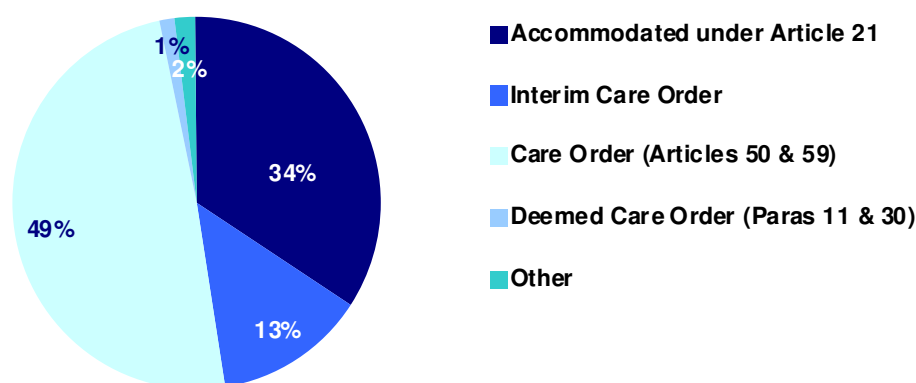
Table 2.3: Looked after children by legal status and gender at 31 March 2011¹

| Legal Status | Boys | | Girls | | Total | |
|------------------------------------|--------------|------------|--------------|------------|--------------|------------|
| | No. | % | No. | % | No. | % |
| Accommodated under Article 21 | 431 | 33 | 427 | 35 | 858 | 34 |
| Interim Care Order | 174 | 13 | 160 | 13 | 334 | 13 |
| Care Order (Articles 50 & 59) | 660 | 51 | 571 | 47 | 1,231 | 49 |
| Deemed Care Order (Para's 11 & 30) | 13 | 1 | 19 | 2 | 32 | 1 |
| Other | 23 | 2 | 33 | 3 | 56 | 2 |
| Total | 1,301 | 100 | 1,210 | 100 | 2,511 | 100 |

Main Points

- At 31 March 2010, 49% (1,231) looked after children were subject to 'Care Orders (Articles 50 & 59)', 34% (858) were 'Accommodated under Article 21', 13% (334) were subject to 'Interim Care Orders' and 1% (32) were subject to a 'Deemed Care Order (Para's 11 & 30)'
- The profile by legal status was similar for boys and girls, with almost equal proportions detailed within each legal status category;

Figure 2.3: Looked after children by legal status at 31 March 2011



¹ 'Other' includes children taken into care under Emergency Protection Orders (Articles 63 & 64).

Table 2.4: Looked after children by legal status at 31 March (2006 – 2011)¹

| Legal Status | 2006 | | 2007 | | 2008 | | 2009 | | 2010 | | 2011 | |
|--|--------------|------------|--------------|------------|--------------|------------|--------------|------------|--------------|------------|--------------|------------|
| | No. | % | No. | % | No. | % | No. | % | No. | % | No. | % |
| Accommodated under Article 21 | 760 | 31 | 800 | 34 | 902 | 37 | 880 | 36 | 963 | 37 | 858 | 34 |
| Interim Care Order | 302 | 12 | 218 | 9 | 276 | 11 | 329 | 13 | 388 | 15 | 334 | 13 |
| Care Order (Articles 50 & 59) | 1,066 | 44 | 1,093 | 46 | 1,092 | 45 | 1,133 | 46 | 1,159 | 45 | 1,231 | 49 |
| Deemed Care Order (Paras 11 & 30) | 278 | 11 | 216 | 9 | 146 | 6 | 104 | 4 | 64 | 2 | 32 | 1 |
| Freed for Adoption and Looked After by Board/Trust | 0 | 0 | 0 | 0 | 0 | 0 | 0 | 0 | 0 | 0 | 0 | 0 |
| Other | 30 | 1 | 29 | 1 | 17 | 1 | 17 | 1 | 32 | 1 | 56 | 2 |
| Total | 2,436 | 100 | 2,356 | 100 | 2,433 | 100 | 2,463 | 100 | 2,606 | 100 | 2,511 | 100 |

Main Points

- Over the five years from 2006 to 2011, the proportion of looked after children subject to 'Care Orders (Articles 50 & 59)' increased by 5 percentage points from 44% (1,066) in 2006 to 49% (1,231) in 2011;
- In contrast, the proportions subject to 'Deemed Care Order (Paras 11 & 30)' fell by 10 percentage points from 11% (278) to 1% (32);
- Since 2006, the proportions 'Accommodated under Article 21' has increased by 3 percentage points from 31% (760) to 34% (858) in 2011;

¹ 'Other' includes children taken into care under Emergency Protection Orders (Articles 63 & 64).

Looked after children by placement type

Looked after children care can be placed in:

- Residential care;
- Foster care;
- With Family;
- Other Placement types.

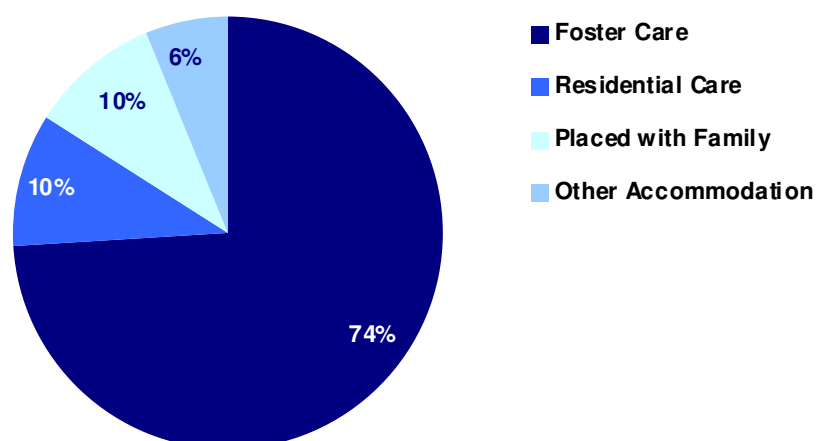
Table 2.5: Looked after children by placement type at 31 March (2006 - 2011)

| Placement Type | 2006 | | 2007 | | 2008 | | 2009 | | 2010 | | 2011 | |
|----------------------------------|--------------|------------|--------------|------------|--------------|------------|--------------|------------|--------------|------------|--------------|------------|
| | No. | % | No. | % | No. | % | No. | % | No. | % | No. | % |
| Residential Care | 321 | 13 | 283 | 12 | 319 | 13 | 308 | 13 | 287 | 11 | 239 | 10 |
| Foster Care | 1,522 | 62 | 1,389 | 59 | 1,376 | 57 | 1,607 | 65 | 1,687 | 65 | 1,862 | 74 |
| Placed with Family | 486 | 20 | 566 | 24 | 622 | 26 | 467 | 19 | 483 | 19 | 258 | 10 |
| Other Accommodation ¹ | 107 | 4 | 118 | 5 | 116 | 5 | 81 | 3 | 149 | 6 | 152 | 6 |
| All Placements | 2,436 | 100 | 2,356 | 100 | 2,433 | 100 | 2,463 | 100 | 2,606 | 100 | 2,511 | 100 |

Main Points

- At 31 March 2011, 74% (1,862) of looked after children were in foster care placement, with 10% (258) placed with family, 10% (239) in residential care, and 6% (152) in 'Other Placement' types;
- Residential Care placements have decreased by 17% (48) from 287 in 2010 to 239 in 2011, compared with increases of 2% (3) and 10% (175) in 'Other Accommodation' and Foster Care respectively;
- The proportion of children in Foster care placements has been increasing in recent years, rising from 57% in 2008 to 74% in 2011;

Figure 2.4: Looked after children by placement type at 31 March 2011



¹ Other accommodation includes: independent living, supported accommodation, secure accommodation, hospital, hostels, aftercare facilities, Simon community, respite care facilities, bed & breakfast accommodation, bed-sits, dependent living etc.

Looked after children by length of time in care

Table 2.6: Looked after children by length of time in care and age at 31 March 2011

| Length of time in care | Age Band (years) | | | | | | | | | |
|------------------------|------------------|------------|------------|------------|------------|------------|------------|------------|--------------|------------|
| | 0-4 | | 5-11 | | 12-15 | | 16 & older | | Total | |
| | No. | % | No. | % | No. | % | No. | % | No. | % |
| Less than 3 months | 70 | 13 | 56 | 8 | 59 | 7 | 18 | 5 | 203 | 8 |
| 3 months < 1 year | 163 | 31 | 110 | 15 | 116 | 14 | 43 | 11 | 432 | 17 |
| 1 year < 3 years | 252 | 47 | 249 | 34 | 163 | 19 | 83 | 22 | 747 | 30 |
| 3 year < 5 years | 49 | 9 | 150 | 20 | 118 | 14 | 49 | 13 | 366 | 15 |
| 5 years < 10 years | 0 | 0 | 166 | 22 | 249 | 29 | 105 | 27 | 520 | 21 |
| 10 years or more | 0 | 0 | 12 | 2 | 147 | 17 | 84 | 22 | 243 | 10 |
| Total | 534 | 100 | 743 | 100 | 852 | 100 | 382 | 100 | 2,511 | 100 |

Main Points

- At 31 March 2011, 45% (1,129) of looked after children had been in care for three years or more, with 75% (1,876) in care for one year or longer;
- 1 in 4 (25%) children had been in care for less than 1 year;
- Older children (16 years & older) were less likely than younger children to have spent shorter periods of time (less than 1 year) in care;
- 47% (252) of children aged 0 – 4 years old had been in care between one year and 3 years;

Figure 2.5: Looked after children by length of time in care at 31 March 2011

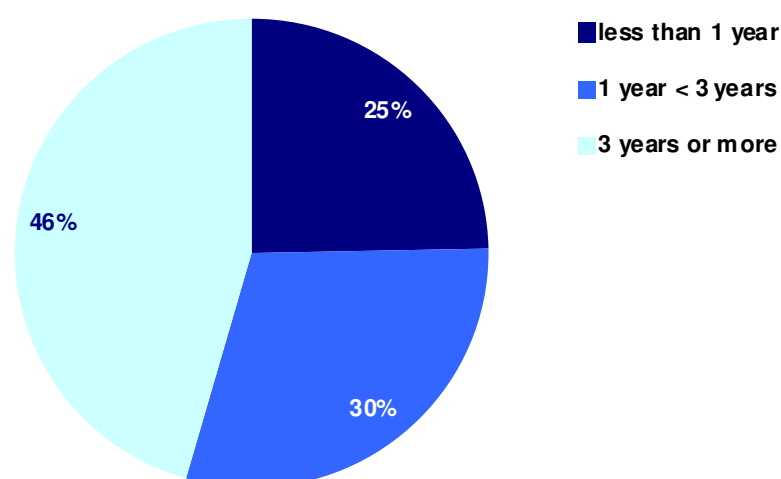


Table 2.7: Looked after children by length of time in care at 31 March (2006 – 2011)

| Length of time in care | 2006 | | 2007 | | 2008 | | 2009 | | 2010 | | 2011 | |
|------------------------|--------------|------------|--------------|------------|--------------|------------|--------------|------------|--------------|------------|--------------|------------|
| | No. | % | No. | % | No. | % | No. | % | No. | % | No. | % |
| Less than 3 months | 126 | 4 | 133 | 4 | 121 | 4 | 172 | 7 | 169 | 6 | 203 | 8 |
| 3 months < 1 year | 300 | 12 | 337 | 14 | 429 | 18 | 400 | 16 | 423 | 16 | 432 | 17 |
| 1 year < 3 years | 717 | 30 | 595 | 25 | 587 | 25 | 658 | 27 | 813 | 32 | 747 | 30 |
| 3 years or more | 1,293 | 53 | 1,291 | 55 | 1,296 | 53 | 1,233 | 50 | 1,201 | 46 | 1,129 | 46 |
| Total | 2,436 | 100 | 2,356 | 100 | 2,433 | 100 | 2,463 | 100 | 2,606 | 100 | 2,511 | 100 |

Main Points

- In recent years, the proportion of looked after children in care for three years or more fell from 55% in 2007 to 46% in 2011;
- The proportion of children in care for less than 3 months has increased by 4 percentage points between 2006 and 2011 from 4% to 8%;
- Between 2006 and 2011, there was an increase of 5 percentage points in the proportion of children in care for between 3 months and 1 year from 12% (300) to 17% (432) respectively;

Respite Care

Respite care generally refers to a series of short-term, pre-planned or ad-hoc placements when a child moves temporarily from his/her carer (i.e. foster care, residential care or with family etc), to allow the child and the carer to spend some time away from each other. The respite move could involve a change in placement type (i.e. foster care to residential care) or the child may remain in the same placement type (i.e. foster care to foster care). Children may also move from a family placement to other placement types. The use of respite care varies across Trusts. Some Trusts make considerable use of short-term respite care, aimed at maintaining a child in a family placement. Other Trusts use respite care on a more limited basis.

Table 2.8: Respite placements by type and age 2010/11¹

| Placement Type | Age Band (years) | | | | | | | | | | Total | |
|--------------------|------------------|------------|------------|------------|------------|------------|------------|------------|-----------|------------|------------|------------|
| | < 1 | | 1-4 | | 5-11 | | 12-15 | | 16+ | | | |
| | No. | % | No. | % | No. | % | No. | % | No. | % | No. | % |
| Residential Care | - | - | - | - | 55 | 20 | 47 | 19 | 25 | 32 | 129 | 17 |
| Foster Care | 41 | 98 | 128 | 95 | 207 | 75 | 182 | 75 | 49 | 63 | 607 | 79 |
| With Family | - | - | - | - | - | - | - | - | - | - | 31 | 4 |
| Other ² | - | - | - | - | - | - | - | - | - | - | 6 | 1 |
| Total | 42 | 100 | 135 | 100 | 276 | 100 | 242 | 100 | 78 | 100 | 773 | 100 |

Main Points

- Of the 773 respite placements in 2010/11, 79% (607) were foster care, 17% (129) were residential care, 4% (31) were with family, and 1% (6) were 'Other' placement types;
- 67% (518) of respite placements in 2010/11, were in respect of children aged '5-15' years, with 23% (177) under 5, and 10% (78) 16 years or older;
- Generally, younger children, those under 5 years old, were more likely than older children, aged '5-11', to be placed in foster care;

¹ - cell counts have been suppressed to avoid personal disclosure

² - Other accommodation includes: independent living, supported accommodation, secure accommodation, hospital, hostels, aftercare facilities, Simon community, respite care facilities, bed & breakfast accommodation, bed-sits, dependent living etc.

Figure 2.6: Respite placements by type during 2010/11

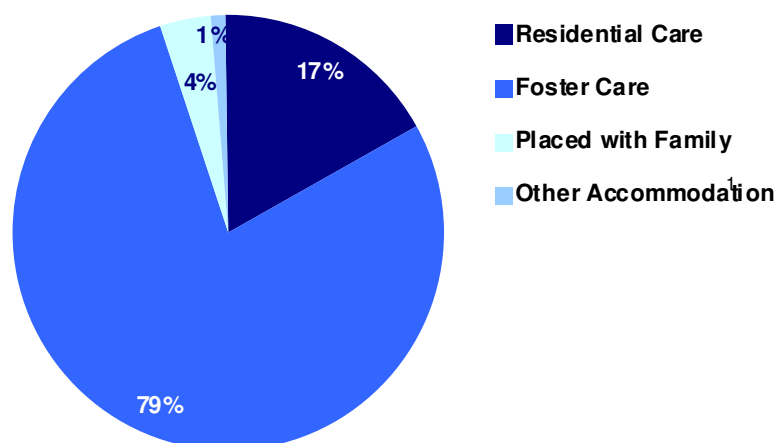


Table 2.9: Respite placements by type for years ending 31 March (2006 - 2011)

| Placement Type | 2006 | | 2007 | | 2008 | | 2009 | | 2010 | | 2011 | |
|--------------------|------------|------------|------------|------------|------------|------------|------------|------------|------------|------------|------------|------------|
| | No. | % | No. | % | No. | % | No. | % | No. | % | No. | % |
| Residential Care | 75 | 10 | 70 | 10 | 95 | 11 | 108 | 16 | 108 | 15 | 129 | 17 |
| Foster Care | 613 | 78 | 576 | 81 | 648 | 78 | 532 | 77 | 568 | 77 | 607 | 79 |
| With Family | 55 | 7 | 43 | 6 | 59 | 7 | 42 | 6 | 52 | 7 | 31 | 4 |
| Other ¹ | 42 | 5 | 25 | 4 | 32 | 4 | 7 | 1 | 12 | 2 | 6 | 1 |
| Total | 785 | 100 | 714 | 100 | 834 | 100 | 689 | 100 | 739 | 100 | 773 | 100 |

Main Points

- From 2006 to 2011, respite placements ranged from a high of 834 in 2008 to a low of 689 in 2009, with 773 respite placements in 2011;
- The proportion of children in Foster care placements have remained relatively constant between 2006 and 2011;
- During the same period, the proportion of children in Residential Care placements increased by 7 percentage points to 17% in 2011; while the proportion placed With Family decreased 3 percentage points to 4% in 2011;

¹ Other accommodation includes: independent living, supported accommodation, secure accommodation, hospital, hostels, aftercare facilities, Simon community, respite care facilities, bed & breakfast accommodation, bed-sits, dependent living etc.

Discharges from care

Table 2.10: Discharges from care by length of time in care and age 2010/11¹

| Length of time in care | Age Band (years) | | | | | | | | | |
|------------------------|------------------|------------|------------|------------|------------|------------|------------|------------|------------|------------|
| | 0-4 | | 5-11 | | 12-15 | | 16 & older | | Total | |
| | No. | % | No. | % | No. | % | No. | % | No. | % |
| Less than 3 months | 47 | 28 | 71 | 36 | 78 | 43 | 18 | 6 | 214 | 26 |
| 3 months < 1 year | 67 | 40 | 63 | 32 | 62 | 34 | 61 | 21 | 253 | 30 |
| 1 year < 3 years | 38 | 23 | 35 | 18 | 28 | 16 | 57 | 20 | 158 | 19 |
| 3 years < 5 years | 16 | 10 | 14 | 7 | 9 | 5 | 30 | 10 | 69 | 8 |
| 5 years < 10 years | 0 | 0 | 15 | 8 | - | - | 58 | 20 | 75 | 9 |
| 10 years or more | 0 | 0 | 0 | 0 | - | - | 67 | 23 | 68 | 8 |
| Total | 168 | 100 | 198 | 100 | 180 | 100 | 291 | 100 | 837 | 100 |

Main Points

- There were 837 discharges from care during 2010/11;
- Just over 2 in 5 (44%) of these related to children in care for 1 year or more, with 26% (214) in care for less than 3 months;
- 53% (155) of those discharged aged 16 and older, had been in care for 3 years or more;

¹ - cell counts have been suppressed to avoid personal disclosure

Children In Need

The Children (Northern Ireland) Order 1995 states that a child is in need if:

- he or she is unlikely to achieve or maintain, or have the opportunity of achieving or maintaining, a reasonable standard of health or development without the provision of services by an authority;
- his or her health or development is likely to be significantly impaired, or further impaired, without the provision of such services; or
- he or she is disabled.^{1,2}

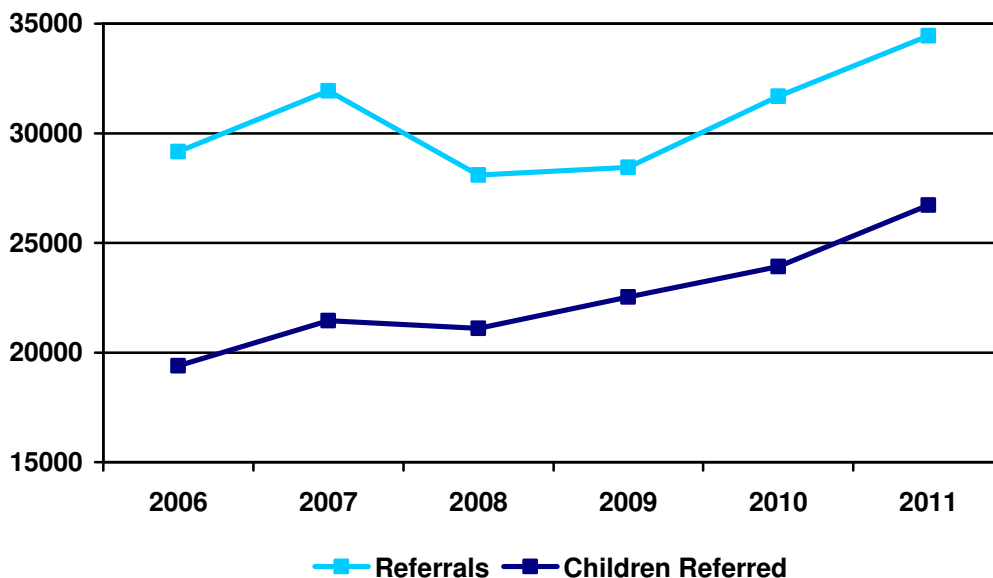
Table 3.1: Referrals, episodes and children referred for years ended 31 March (2006 - 2011)

| | 2006 | 2007 | 2008 | 2009 | 2010 | 2011 |
|--------------------------------------|--------|--------|--------|--------|--------|--------|
| Referrals | 29,158 | 31,930 | 28,088 | 28,440 | 31,693 | 34,447 |
| Children Referred³ | 19,391 | 21,456 | 21,109 | 22,532 | 23,926 | 26,725 |

Main Points

- There were 34,447 referrals to children’s social services during 2010/11, relating to 26,725 children; the count for referrals is higher than that for children as children may be referred more than once during the year;
- Compared to 2010, referrals increased by 9% (2,754), and by 18% (5,289) since 2006;
- Children referred have also increased, by 12% (2,799) from 2010 to 2011, and by 38% (7,334), in the five years from 2006 to 2011;

Figure 3.1: Referrals and children referred for years ended 31 March (2006-2011)



1. 'Northern Ireland Social Work Law', Ciaran White, 2006
 2. Per the Chronically Sick and Disabled Persons (Northern Ireland) 1978
 3. These figures are derived from the date of referral.

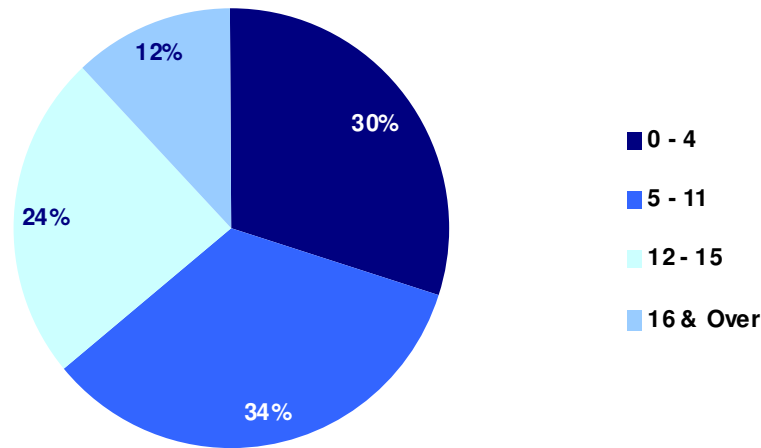
Table 3.2: Children Referred by age and gender during year ended 31 March 2011¹

| Age (years) | Boys | | Girls | | Total | |
|-----------------|---------------|------------|---------------|------------|---------------|------------|
| | No. | % | No. | % | No. | % |
| 0 – 4 | 4,063 | 30 | 3,870 | 30 | 7,933 | 30 |
| 5 – 11 | 4,830 | 35 | 4,161 | 33 | 8,991 | 34 |
| 12 – 15 | 3,171 | 23 | 3,198 | 25 | 6,369 | 24 |
| 16 & Over | 1,602 | 12 | 1,485 | 12 | 3,087 | 12 |
| All Ages | 13,666 | 100 | 12,714 | 100 | 26,380 | 100 |

Main Points

- Of the 26,725 children referred as Children in Need, 26,380 had been assessed at 31 March 2011;
- Of these, 64% (16,924) were under 12 years old, and 36% (9,456) were 12 or older;
- By gender, there were more boys (52%) than girls (48%) referred during 2010/11;

Figure 3.2: Children Referred by age (2010/11)



1. This figure is derived from the date of assessment and differs from the figures given in Table 3.1, those figures are taken from the date of referral.

Table 3.3: Children Referred by age for years ended 31 March (2006 - 2011)

| Age (years) | 2006 | | 2007 | | 2008 | | 2009 | | 2010 | | 2011 | |
|-----------------|---------------|------------|---------------|------------|---------------|------------|---------------|------------|---------------|------------|---------------|------------|
| | No. | % | No. | % | No. | % | No. | % | No. | % | No. | % |
| 0 - 4 | 5,306 | 27 | 5,629 | 26 | 5,600 | 27 | 6,636 | 30 | 7,053 | 30 | 7,933 | 30 |
| 5 - 11 | 6,756 | 35 | 7,215 | 34 | 7,127 | 34 | 7,743 | 35 | 8,320 | 35 | 8,991 | 34 |
| 12 - 15 | 5,041 | 26 | 5,665 | 27 | 5,590 | 27 | 5,509 | 25 | 5,675 | 24 | 6,369 | 24 |
| 16 & Over | 2,198 | 11 | 2,865 | 13 | 2,660 | 13 | 2,492 | 11 | 2,759 | 12 | 3,087 | 12 |
| All Ages | 19,301 | 100 | 21,374 | 100 | 20,977 | 100 | 22,380 | 100 | 23,807 | 100 | 26,380 | 100 |

Main Points

- The numbers of Children in Need assessed at 31 March 2011 have increased by 37% (7,079) and 11% (2,573) since 2006 and 2010 respectively;
- The proportion of children in age band '0-4' has increased by four percentage points from 26% (5,629) in 2007 to 30% (7,933) in 2011;
- During the same period, the proportion of children in age band '12-15' fell by three percentage points, from 27% (5,665) to 24% (6,369);

Figure 3.3: Children Referred for years ended 31 March (2006 – 2011)

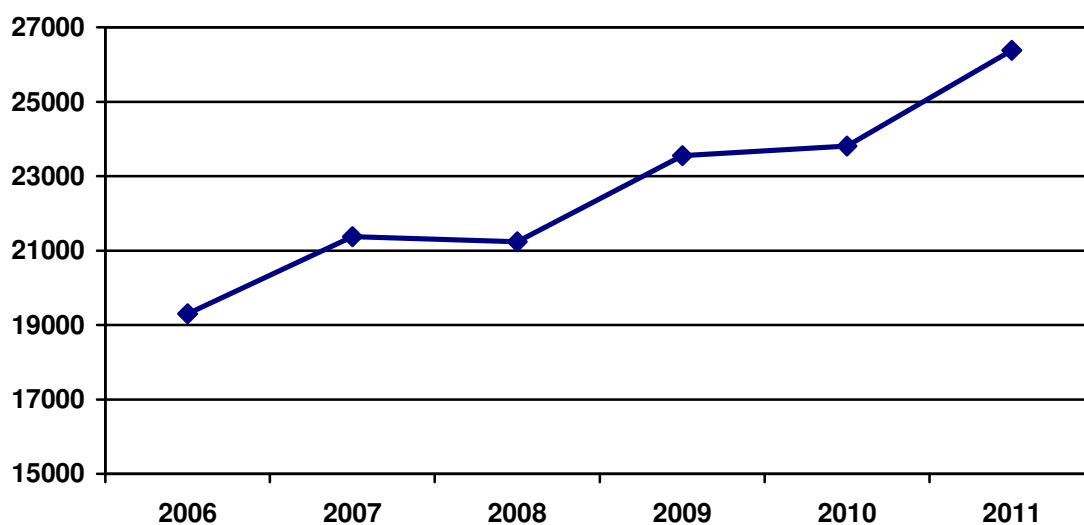


Table 3.4: Children Referred by Current Status and Age during year ended 31 March 2011

| Current Status | Age Band (years) | | | | | | | | | |
|---|------------------|------------|--------------|------------|--------------|------------|--------------|------------|---------------|------------|
| | 0-4 | | 5-11 | | 12-15 | | 16+ | | Total | |
| | No. | % | No. | % | No. | % | No. | % | No. | % |
| Inappropriate Referral | 56 | 1 | 47 | 1 | 24 | 0 | 21 | 1 | 148 | 1 |
| No further action – work complete | 819 | 10 | 838 | 9 | 793 | 12 | 582 | 19 | 3,032 | 11 |
| No further action – unmet need | 317 | 4 | 318 | 4 | 246 | 4 | 143 | 5 | 1,024 | 4 |
| Allocation for further action – service/ assessment | 6,452 | 81 | 7,450 | 83 | 5,029 | 79 | 2,235 | 72 | 21,166 | 80 |
| Other | 289 | 4 | 338 | 4 | 277 | 4 | 106 | 3 | 1,010 | 4 |
| Total | 7,933 | 100 | 8,991 | 100 | 6,369 | 100 | 3,087 | 100 | 26,380 | 100 |

Main Points

- 80% (21,166) of all children referred to Social Services were allocated for further action of either a service or assessment;
- The proportion of children in age band '0-4' allocated for further action was 81%, compared to 72% of children aged 16 & over who were allocated for further action;
- Overall 11% (3,032) of children referred to Social Services required no further action due to work complete; when looking at children aged 16 & over only this figure rose to 19%;

Figure 3.4: Current Status of Referred Children during year ended 31 March 2011

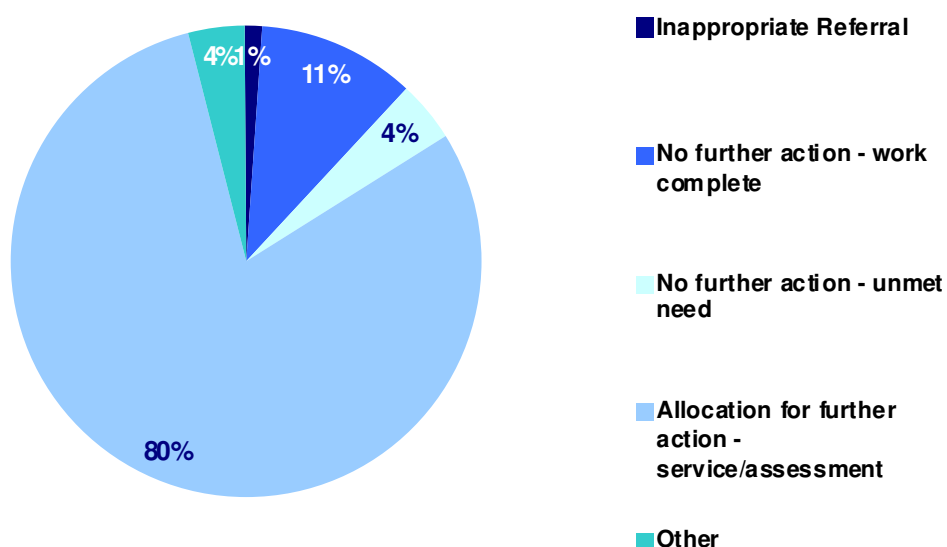


Table 3.5: Children Referred by Current Status at 31 March (2006 – 2011)

| Current Status | 2006 | | 2007 | | 2008 | | 2009 | | 2010 | | 2011 | |
|--|---------------|------------|---------------|------------|---------------|------------|---------------|------------|---------------|------------|---------------|------------|
| | No. | % | No. | % | No. | % | No. | % | No. | % | No. | % |
| Inappropriate Referral | 135 | 1 | 148 | 1 | 227 | 1 | 292 | 1 | 262 | 1 | 148 | 1 |
| No further action – work complete | 5,152 | 27 | 5,554 | 26 | 5,263 | 25 | 3,117 | 14 | 2,562 | 11 | 3,032 | 11 |
| No further action – unmet need | 85 | 0 | 337 | 2 | 58 | 0 | 580 | 3 | 891 | 4 | 1,024 | 4 |
| Allocation for further action – service assessment | 12,309 | 64 | 13,838 | 65 | 13,900 | 66 | 16,759 | 75 | 18,854 | 79 | 21,166 | 80 |
| Other | 1,620 | 8 | 1,497 | 7 | 1,529 | 7 | 1,632 | 7 | 1,238 | 5 | 1,010 | 4 |
| All Placements | 19,301 | 100 | 21,374 | 100 | 20,977 | 100 | 22,380 | 100 | 23,807 | 100 | 26,380 | 100 |

Main Points

- Between 2006 and 2011 the proportion of children referred 'Allocated for Further Action' increased by 16%, from 64% to 80% respectively;
- During the same period of time the proportion of children requiring 'No Further Action due to Unmet Need' decreased by 16 percentage points, from 27% to 11% respectively.

Children's Residential Homes

Children's residential homes provide care and accommodation for children in accordance with the Children (Northern Ireland) Order 1995.

At 4 January 2012, there were 53 residential homes for children in Northern Ireland: of these, 42 were statutory and 11 were independent children's homes.

Table 4.1: Children's statutory residential homes¹

| HSC Trust | Homes | Places | Average places per home |
|-------------------------|-----------|------------|-------------------------|
| Belfast | 8 | 56 | 7 |
| Northern | 7 | 51 | 7 |
| South Eastern | 9 | 72 | 8 |
| Southern | 8 | 53 | 7 |
| Western | 10 | 69 | 7 |
| Northern Ireland | 42 | 301 | 7 |

Main Points

- At 4 January 2012, there were 42 children's statutory residential homes in Northern Ireland, providing 301 places, on average 7 places per home;
- Across HSC Trusts, the Western Trust had the highest number of statutory children's homes (10), providing 69 places, and averaging 7 places per home;
- The Northern Trust had 7 statutory residential homes for children, averaging about 7 places per home;

1. Source: Health and Personal Services Regulation and Quality Improvement Authority (RQIA)

Figure 4.1: Places in children’s statutory residential homes by HSC Trust

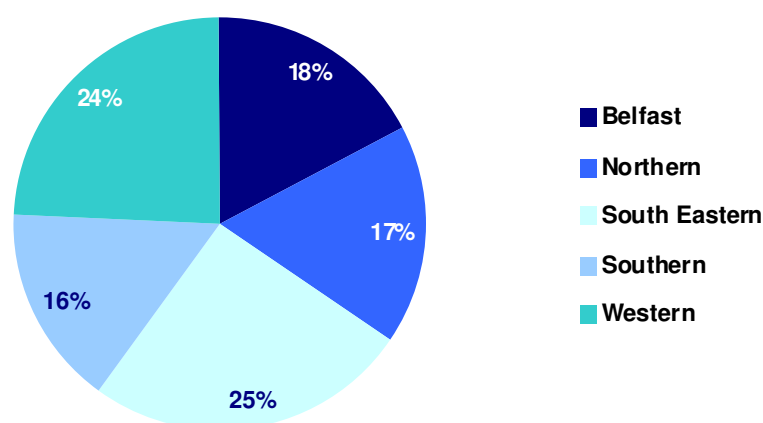


Table 4.2: Children’s independent residential homes¹

| HSC Trust | Independent Homes | Independent Places | Places per 10,000-pop. aged under 18 |
|-------------------------|-------------------|--------------------|--------------------------------------|
| Belfast | 5 | 34 | 5.0 |
| Northern | 4 | 20 | 1.8 |
| South Eastern | 1 | 6 | 0.7 |
| Southern | 1 | 4 | 0.4 |
| Western | - | - | - |
| Northern Ireland | 11 | 64 | 1.8 |

Main Points

- At 4 January 2012, there were 11 independent residential children’s homes in Northern Ireland, providing 64 places, averaging about 6 places per home;
- There were no independent children’s homes in the Western Trust;
- Of the 64 places in independent children’s homes, over half (34) were provided by the Belfast Trust;

1. Source: Health and Personal Services Regulation and Quality Improvement Authority (RQIA)

Readership Survey

1 What do you use the Children Order Statistical Trends for? (Please tick all that apply)

| | |
|------------------------|--------------------------|
| Briefing | <input type="checkbox"/> |
| Policy Formulation | <input type="checkbox"/> |
| Service Planning | <input type="checkbox"/> |
| General Information | <input type="checkbox"/> |
| Research | <input type="checkbox"/> |
| Other (Please Specify) | <input type="checkbox"/> |
| Do Not Use | <input type="checkbox"/> |

2 Were the Children Order Statistical Trends of any value to you?

| | |
|-----|--------------------------|
| Yes | <input type="checkbox"/> |
| No | <input type="checkbox"/> |

If 'No', please indicate why

.....

3 Please indicate how useful you found each section of the Children Order Statistical Trends: (Please tick one of the following)

| | Very Useful | Useful | Little Use | No Use | Do Not Use |
|---------------------------------------|--------------------------|--------------------------|--------------------------|--------------------------|--------------------------|
| Children on Child Protection Register | <input type="checkbox"/> | <input type="checkbox"/> | <input type="checkbox"/> | <input type="checkbox"/> | <input type="checkbox"/> |
| Children Looked After | <input type="checkbox"/> | <input type="checkbox"/> | <input type="checkbox"/> | <input type="checkbox"/> | <input type="checkbox"/> |
| Children's Homes | <input type="checkbox"/> | <input type="checkbox"/> | <input type="checkbox"/> | <input type="checkbox"/> | <input type="checkbox"/> |

4 What did you find most useful?

.....

.....

.....

5 What did you find least useful?

.....

.....

6 Would you like to see other subject areas covered in the Children Order Statistical Trends?

| | |
|----------------------|--------------------------|
| No | <input type="checkbox"/> |
| Yes (please specify) | <input type="checkbox"/> |

.....

.....

7 How would you judge the level of detail contained in the Children Order Statistical Trends?

| | |
|-------------|--------------------------|
| Too Much | <input type="checkbox"/> |
| About Right | <input type="checkbox"/> |
| Not Enough | <input type="checkbox"/> |

8 Would you like to see any improvements in the Children Order Statistical Trends?

No
 Yes (please specify)

.....

9 How satisfied are you with the information provided?

Very Satisfied
 Satisfied
 Dissatisfied
 Very Dissatisfied

If 'Dissatisfied' or 'Very Dissatisfied', please indicate why

10 Any further comments on this bulletin?

.....

11 To help us analyse the responses to this survey, please indicate:

a. Where you work:

DHSSPS
 HSC Board
 HSC Trust
 Voluntary Organisation
 Other Department
 Research / Academic
 Other (please specify)

.....

b. Your specific area(s) of interest:

e.g. finance, service planning, elderly, family & childcare, learning disability etc

.....

All completed readership surveys should be returned to: Community Information Branch, DHSSPS, Annexe 2, Castle Buildings, Stormont Estate, Belfast, BT4 3SQ

Thank you for taking the time to complete this survey

Appendix

Belfast Health and Social Care Trust Trends 2006/07 – 2010/11

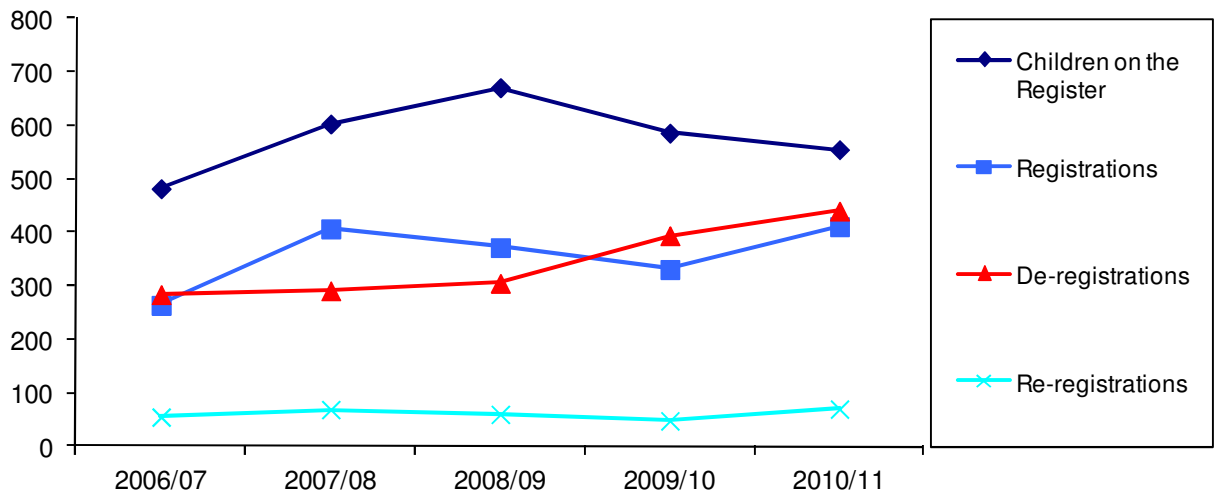
Table1: Belfast Health and Social Care Trust Trends

| | 2006/07 | 2007/08 | 2008/09 | 2009/10 | 2010/11 |
|---|---------|---------|---------|---------|---------|
| Number of Children on Child Protection Register at 31 March | 482 | 603 | 671 | 586 | 555 |
| Number of Child Protection Registrations during year ended 31 March | 264 | 407 | 372 | 331 | 411 |
| Number of Child Protection De-registrations during year ended 31 March | 284 | 291 | 305 | 394 | 440 |
| Number of Child Protection Re-registrations at 31 March | 55 | 69 | 60 | 48 | 70 |
| Number of Looked After Children at 31 March | 594 | 592 | 587 | 627 | 622 |
| Admissions to Care during year ended 31 March | 305 | 247 | 279 | 215 | 238 |
| Discharges from Care during year ended 31 March | 318 | 250 | 271 | 194 | 241 |
| Number of Children who Received Respite Care during year ended 31 March | 175 | 167 | 50 | 19 | 16 |
| Number of Children in Need Referrals during year ended 31 March | 8,677 | 6,959 | 6,119 | 6,416 | 6,879 |
| Number of Children Referred during year ended 31 March | 4,742 | 4,842 | 4,917 | 4,434 | 5,543 |
| Number of Children Referred with a Disability during year ended 31 March | 165 | 185 | 282 | 98 | 81 |

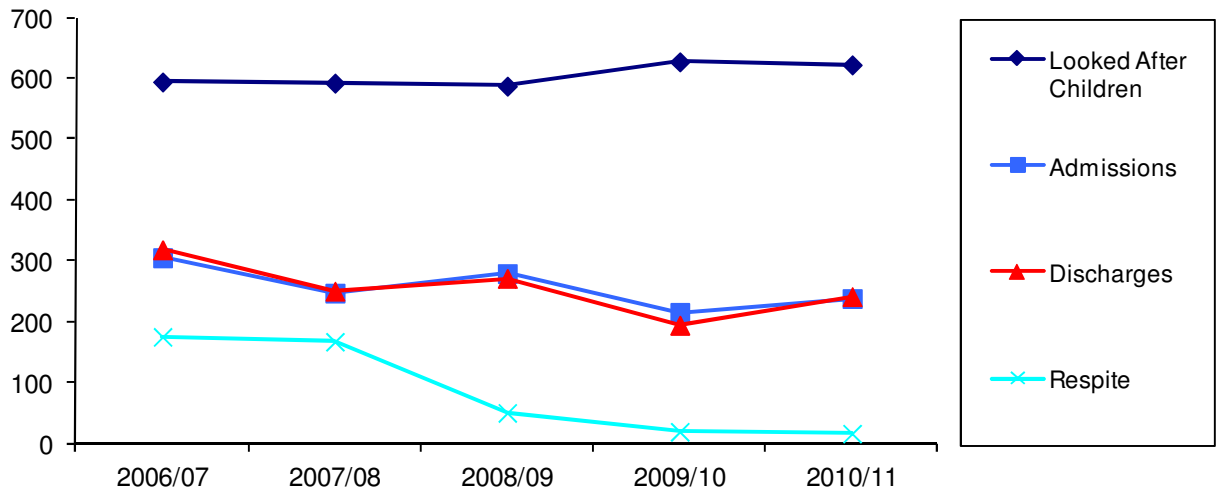
Table 2: Belfast Health and Social Care Trust Trends per 10,000 of the Population under 18

| | 2006/07 | 2007/08 | 2008/09 | 2009/10 | 2010/11 |
|---|---------|---------|---------|---------|---------|
| Number of Children on Child Protection Register at 31 March | 63.9 | 80.2 | 90.1 | 78.7 | 75.1 |
| Number of Child Protection Registrations during year ended 31 March | 35.0 | 54.1 | 50.0 | 44.5 | 55.6 |
| Number of Child Protection De-registrations during year ended 31 March | 37.7 | 38.7 | 41.0 | 52.9 | 59.5 |
| Number of Child Protection Re-registrations at 31 March | 7.3 | 9.2 | 8.1 | 6.4 | 9.5 |
| Number of Looked After Children at 31 March | 78.8 | 78.7 | 78.8 | 84.2 | 84.2 |
| Admissions to Care during year ended 31 March | 40.4 | 32.8 | 37.5 | 28.9 | 32.2 |
| Discharges from Care during year ended 31 March | 42.2 | 33.2 | 36.4 | 26.1 | 32.6 |
| Number of Children who Received Respite Care during year ended 31 March | 23.2 | 22.2 | 6.7 | 2.6 | 2.2 |
| Number of Children in Need Referrals during year ended 31 March | 1,150.7 | 925.5 | 821.9 | 861.8 | 930.9 |
| Number of Children Referred during year ended 31 March | 628.8 | 643.9 | 660.5 | 595.6 | 750.1 |
| Number of Children Referred with a Disability during year ended 31 March | 21.9 | 24.6 | 37.9 | 13.2 | 11.0 |

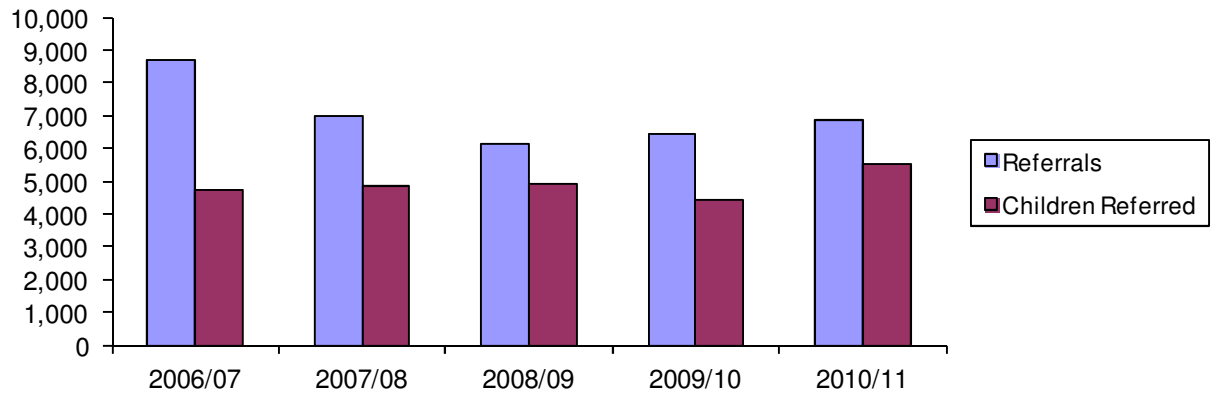
The Number of Children on the Child Protection Register at 31 March in Comparison with Registrations, De-registrations and Re-registrations for year ended 31 March



The Number of Looked After Children at 31 March in Comparison to the Number of Admissions to Care, Discharges from Care and the Number of Children who Received Respite Care for year ended 31 March



The Number of Children in Need Referrals in Comparison to the Number of Children Referred for year ended 31 March



Northern Health and Social Care Trust Trends 2006/07 – 2010/11

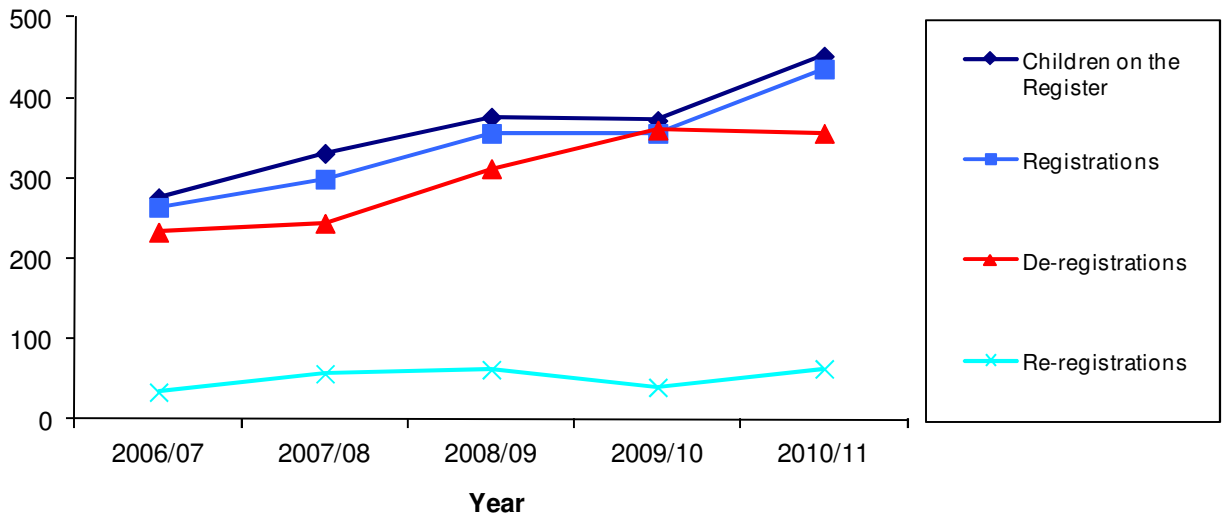
Table 1: Northern Health and Social Care Trust Trends

| | 2006/07 | 2007/08 | 2008/09 | 2009/10 | 2010/11 |
|---|---------|---------|---------|---------|---------|
| Number of Children on Child Protection Register at 31 March | 276 | 331 | 376 | 372 | 452 |
| Number of Child Protection Registrations during year ended 31 March | 264 | 299 | 356 | 356 | 436 |
| Number of Child Protection De-registrations during year ended 31 March | 233 | 244 | 312 | 360 | 356 |
| Number of Child Protection Re-registrations at 31 March | 34 | 57 | 62 | 40 | 63 |
| Number of Looked After Children at 31 March | 493 | 506 | 519 | 519 | 579 |
| Admissions to Care during year ended 31 March | 199 | 207 | 259 | 368 | 192 |
| Discharges from Care during year ended 31 March | 203 | 199 | 242 | 367 | 133 |
| Number of Children who Received Respite Care during year ended 31 March | 149 | 157 | 145 | 164 | 190 |
| Number of Children in Need Referrals during year ended 31 March | 6,476 | 5,507 | 6,562 | 7,851 | 9,271 |
| Number of Children Referred during year ended 31 March | 4,759 | 4,333 | 5,096 | 5,827 | 6,494 |
| Number of Children Referred with a Disability during year ended 31 March | 199 | 197 | 178 | 237 | 202 |

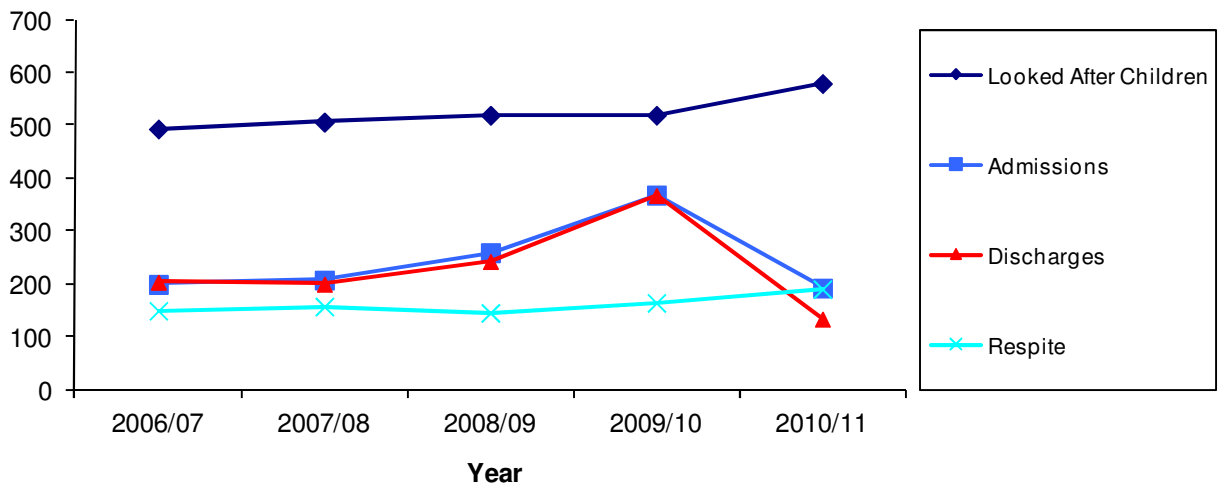
Table 2: Northern Health and Social Care Trust Trends per 10,000 of the Population under 18

| | 2006/07 | 2007/08 | 2008/09 | 2009/10 | 2010/11 |
|---|---------|---------|---------|---------|---------|
| Number of Children on Child Protection Register at 31 March | 25.3 | 30.3 | 34.4 | 34.0 | 41.5 |
| Number of Child Protection Registrations during year ended 31 March | 24.2 | 27.4 | 32.6 | 32.6 | 40.0 |
| Number of Child Protection De-registrations during year ended 31 March | 21.4 | 22.4 | 28.5 | 32.9 | 32.7 |
| Number of Child Protection Re-registrations at 31 March | 3.1 | 5.2 | 5.7 | 3.7 | 5.8 |
| Number of Looked After Children at 31 March | 45.2 | 46.4 | 47.5 | 47.5 | 53.2 |
| Admissions to Care during year ended 31 March | 18.3 | 19.0 | 23.7 | 33.7 | 17.6 |
| Discharges from Care during year ended 31 March | 18.6 | 18.2 | 22.1 | 33.6 | 12.2 |
| Number of Children who Received Respite Care during year ended 31 March | 13.7 | 14.4 | 13.3 | 15.0 | 17.4 |
| Number of Children in Need Referrals during year ended 31 March | 594.2 | 504.5 | 600.3 | 718.2 | 851.4 |
| Number of Children Referred during year ended 31 March | 436.7 | 397.0 | 466.2 | 533.0 | 596.4 |
| Number of Children Referred with a Disability during year ended 31 March | 18.3 | 18.0 | 16.3 | 21.7 | 18.6 |

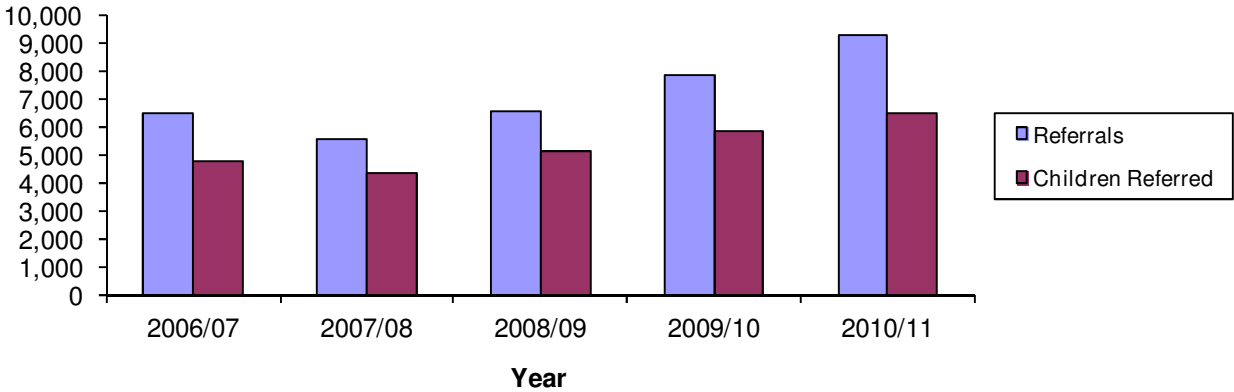
The Number of Children on the Child Protection Register at 31 March in Comparison with Numbers of Registrations, De-registrations and Re-registrations for year ended 31 March



The Number of Looked After Children at 31 March in Comparison to the Number of Admissions to Care, Discharges from Care and the Number of Children who Received Respite Care for year ended 31 March



The Number of Children in Need Referrals in Comparison to the Number of Children Referred for year ended 31 March



South Eastern Health and Social Care Trust Trends 2006/07– 2010/11

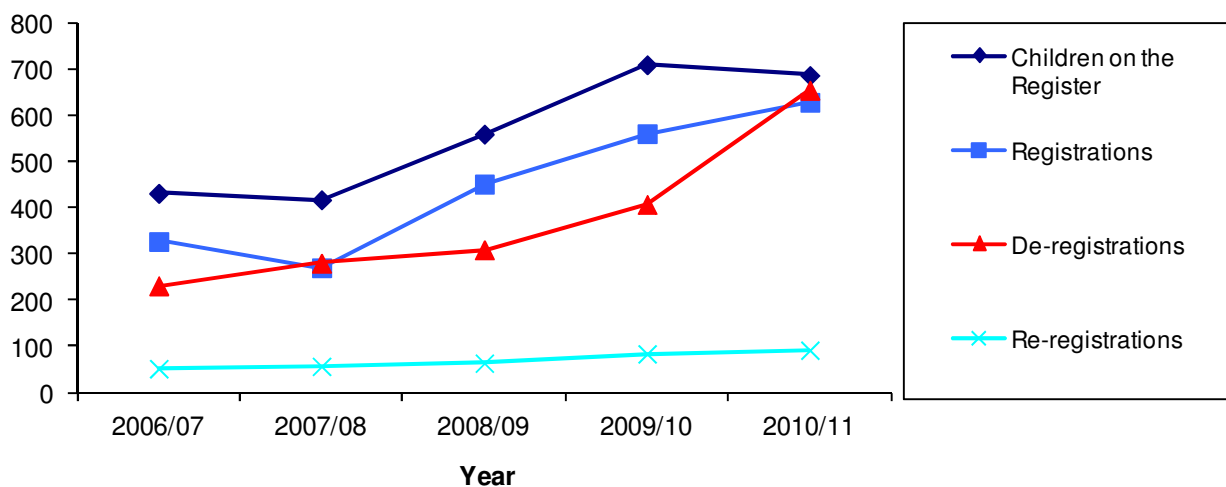
Table 1: South Eastern Health and Social Care Trust Trends

| | 2006/07 | 2007/08 | 2008/09 | 2009/10 | 2010/11 |
|---|---------|---------|---------|---------|---------|
| Number of Children on Child Protection Register at 31 March | 431 | 417 | 559 | 709 | 686 |
| Number of Child Protection Registrations during year ended 31 March | 327 | 270 | 451 | 560 | 628 |
| Number of Child Protection De-registrations during year ended 31 March | 231 | 280 | 309 | 407 | 654 |
| Number of Child Protection Re-registrations at 31 March | 52 | 57 | 64 | 84 | 92 |
| Number of Looked After Children at 31 March | 501 | 553 | 562 | 635 | 503 |
| Admissions to Care during year ended 31 March | 152 | 237 | 172 | 214 | 134 |
| Discharges from Care during year ended 31 March | 159 | 172 | 155 | 102 | 187 |
| Number of Children who Received Respite Care during year ended 31 March | 184 | 247 | 256 | 263 | 262 |
| Number of Children in Need Referrals during year ended 31 March | 5,464 | 5,515 | 4,981 | 6,596 | 6,503 |
| Number of Children Referred during year ended 31 March | 3,723 | 4,076 | 3,924 | 4,867 | 4,925 |
| Number of Children Referred with a Disability during year ended 31 March | 163 | 156 | 129 | 167 | 192 |

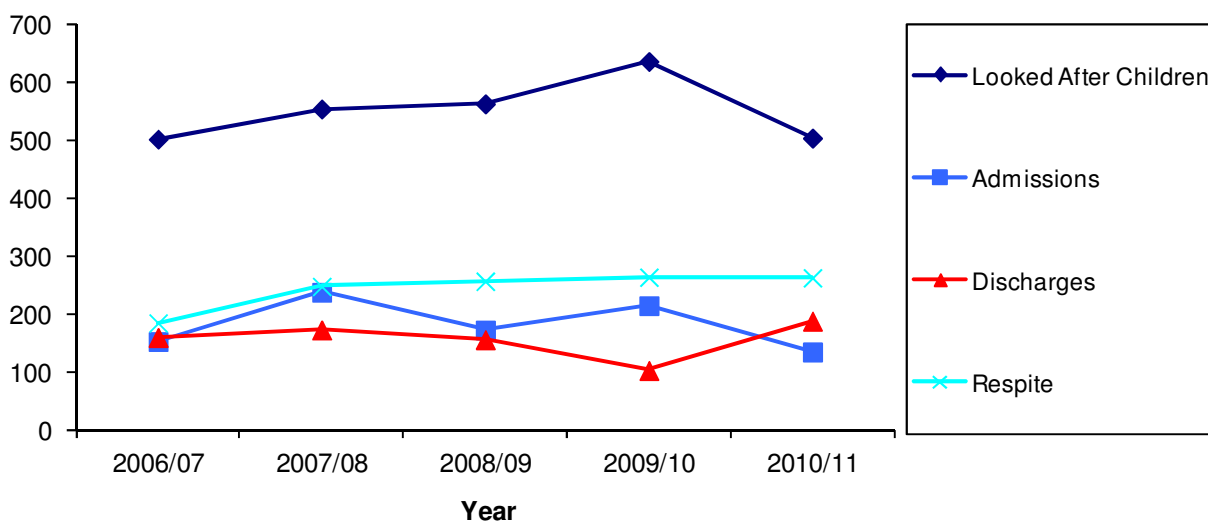
Table 2: South Eastern Health and Social Care Trust Trends per 10,000 of the Population under 18

| | 2006/07 | 2007/08 | 2008/09 | 2009/10 | 2010/11 |
|---|---------|---------|---------|---------|---------|
| Number of Children on Child Protection Register at 31 March | 53.5 | 51.6 | 69.0 | 87.5 | 85.0 |
| Number of Child Protection Registrations during year ended 31 March | 40.6 | 33.4 | 55.7 | 69.1 | 77.8 |
| Number of Child Protection De-registrations during year ended 31 March | 28.7 | 34.7 | 38.1 | 50.2 | 81.1 |
| Number of Child Protection Re-registrations at 31 March | 6.5 | 7.1 | 7.9 | 10.4 | 11.4 |
| Number of Looked After Children at 31 March | 62.2 | 68.5 | 69.4 | 78.4 | 62.4 |
| Admissions to Care during year ended 31 March | 18.9 | 29.3 | 21.2 | 26.4 | 16.6 |
| Discharges from Care during year ended 31 March | 19.8 | 21.3 | 19.1 | 12.6 | 23.2 |
| Number of Children who Received Respite Care during year ended 31 March | 22.9 | 30.6 | 31.6 | 32.5 | 32.5 |
| Number of Children in Need Referrals during year ended 31 March | 678.8 | 682.7 | 614.8 | 814.2 | 806.1 |
| Number of Children Referred during year ended 31 March | 462.5 | 504.6 | 484.3 | 600.7 | 610.5 |
| Number of Children Referred with a Disability during year ended 31 March | 20.2 | 19.3 | 15.9 | 20.6 | 23.8 |

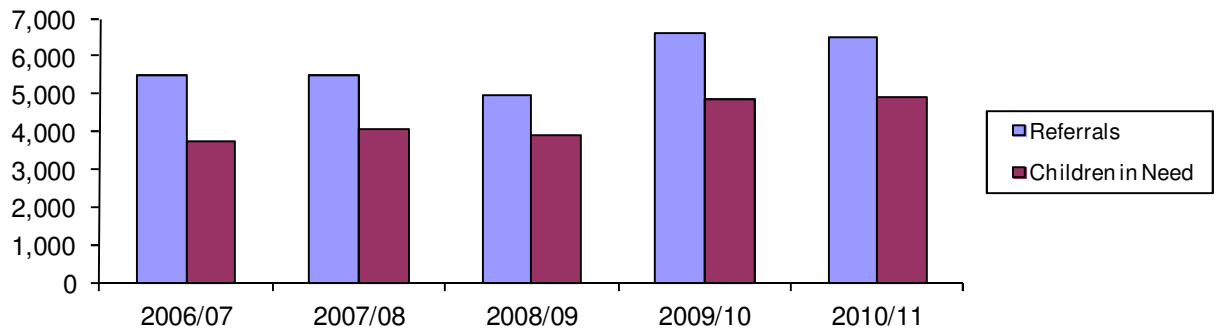
The Number of Children on the Child Protection Register at 31 March in Comparison with Registrations, De-registrations and Re-registrations for year ended 31 March



The Number of Looked After Children at 31 March in Comparison to Admissions to Care, Discharges from Care and the Number of Children who Received Respite Care for year ended 31 March



The Number of Children in Need Referrals in Comparison to the Number of Children Referred for Year ended 31 March



Southern Health and Social Care Trust Trends 2006/07 – 2010/11

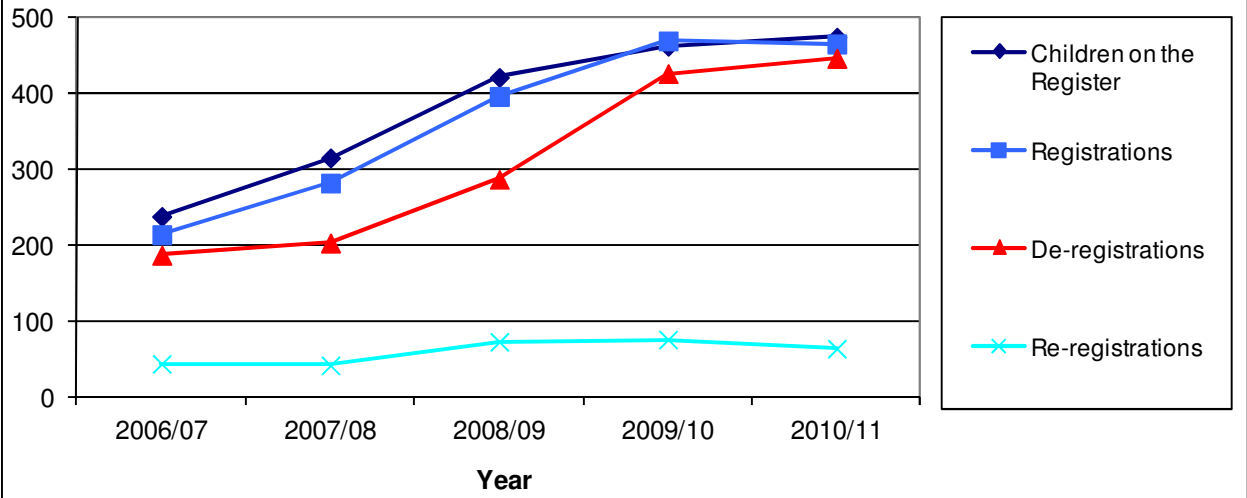
Table 1: Southern Health and Social Care Trust Trends

| | 2006/07 | 2007/08 | 2008/09 | 2009/10 | 2010/11 |
|---|---------|---------|---------|---------|---------|
| Number of Children on Child Protection Register at 31 March | 237 | 314 | 420 | 461 | 473 |
| Number of Child Protection Registrations during year ended 31 March | 213 | 281 | 395 | 468 | 464 |
| Number of Child Protection De-registrations during year ended 31 March | 186 | 202 | 286 | 425 | 445 |
| Number of Child Protection Re-registrations at 31 March | 43 | 41 | 72 | 75 | 63 |
| Number of Looked After Children at 31 March | 341 | 356 | 370 | 403 | 407 |
| Admissions to Care during year ended 31 March | 119 | 176 | 228 | 177 | 181 |
| Discharges from Care during year ended 31 March | 159 | 161 | 158 | 161 | 173 |
| Number of Children who Received Respite Care during year ended 31 March | 148 | 163 | 142 | 178 | 189 |
| Number of Children in Need Referrals during year ended 31 March | 6,060 | 5,372 | 5,858 | 6,021 | 7,022 |
| Number of Children Referred during year ended 31 March | 4,498 | 4,343 | 4,543 | 4,912 | 5,452 |
| Number of Children Referred with a Disability during year ended 31 March | 134 | 93 | 108 | 63 | 96 |

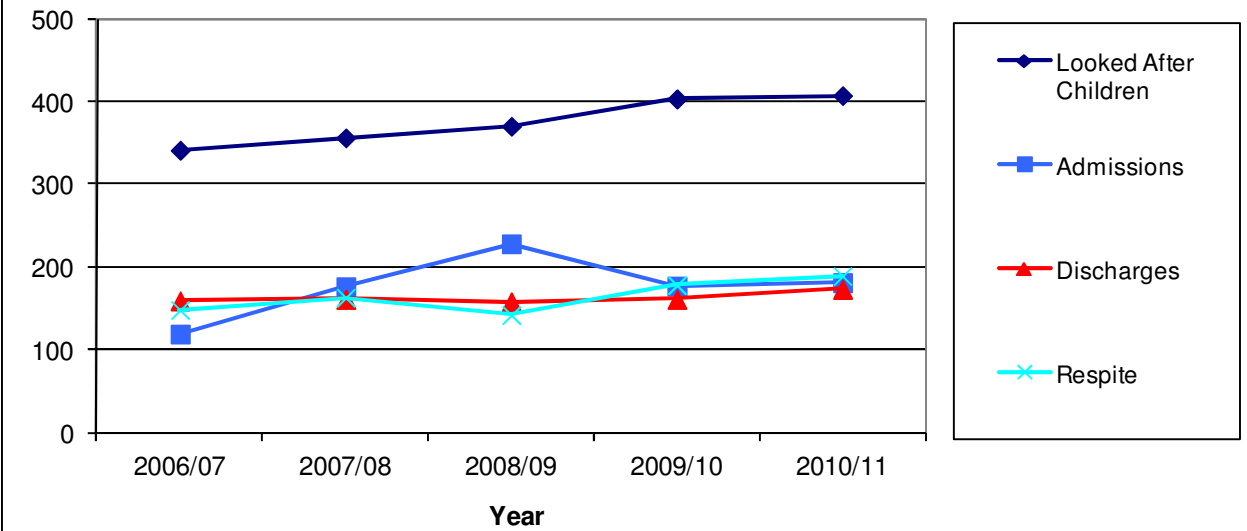
Table 2: Southern Health and Social Care Trust Trends per 10,000 of the Population under 18

| | 2006/07 | 2007/08 | 2008/09 | 2009/10 | 2010/11 |
|---|---------|---------|---------|---------|---------|
| Number of Children on Child Protection Register at 31 March | 26.4 | 34.6 | 46.0 | 50.4 | 51.3 |
| Number of Child Protection Registrations during year ended 31 March | 23.7 | 31.0 | 43.2 | 51.2 | 50.3 |
| Number of Child Protection De-registrations during year ended 31 March | 20.7 | 22.3 | 31.3 | 46.5 | 48.3 |
| Number of Child Protection Re-registrations at 31 March | 4.8 | 4.5 | 7.9 | 8.2 | 6.8 |
| Number of Looked After Children at 31 March | 37.9 | 39.3 | 40.5 | 44.1 | 44.2 |
| Admissions to Care during year ended 31 March | 13.2 | 19.4 | 24.9 | 19.4 | 19.6 |
| Discharges from Care during year ended 31 March | 17.7 | 17.8 | 17.3 | 17.6 | 18.8 |
| Number of Children who Received Respite Care during year ended 31 March | 16.5 | 18.0 | 15.5 | 19.5 | 20.5 |
| Number of Children in Need Referrals during year ended 31 March | 674.3 | 592.5 | 641.0 | 658.8 | 761.9 |
| Number of Children Referred during year ended 31 March | 500.5 | 479.0 | 497.1 | 537.5 | 591.6 |
| Number of Children Referred with a Disability during year ended 31 March | 14.9 | 10.3 | 11.8 | 6.9 | 10.4 |

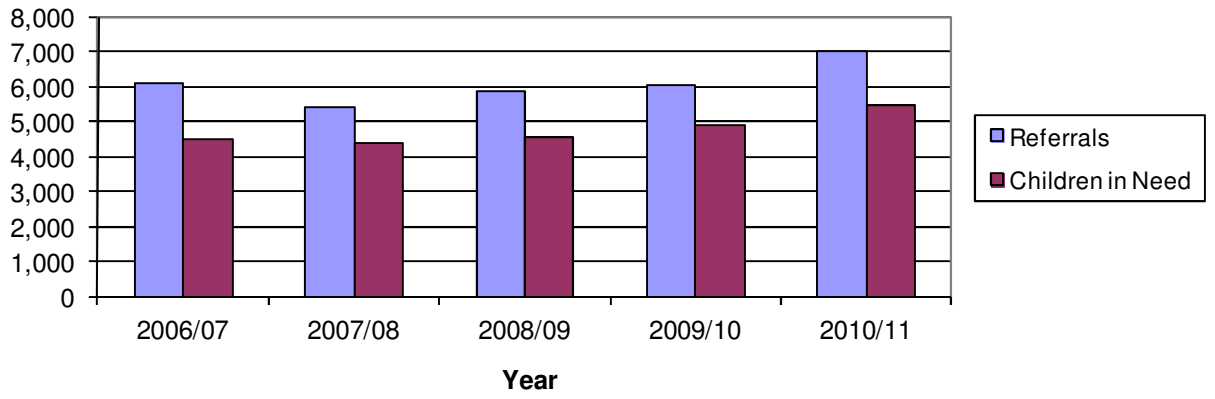
The Number of Children on the Child Protection Register at 31 March in Comparison with Registrations, De-registratons and Re-registrations for year ended 31 March



The Numbers of Looked After Children at 31 March in Comparison to Admissions to Care, Discharges from Care and the Number of Children who received Respite Care for year ended 31 March



The Number of Children in Need Referrals in Comparison to the Number of Children Referred for year ended 31 March



Western Health and Social Care Trust Trends 2006/07– 2010/11

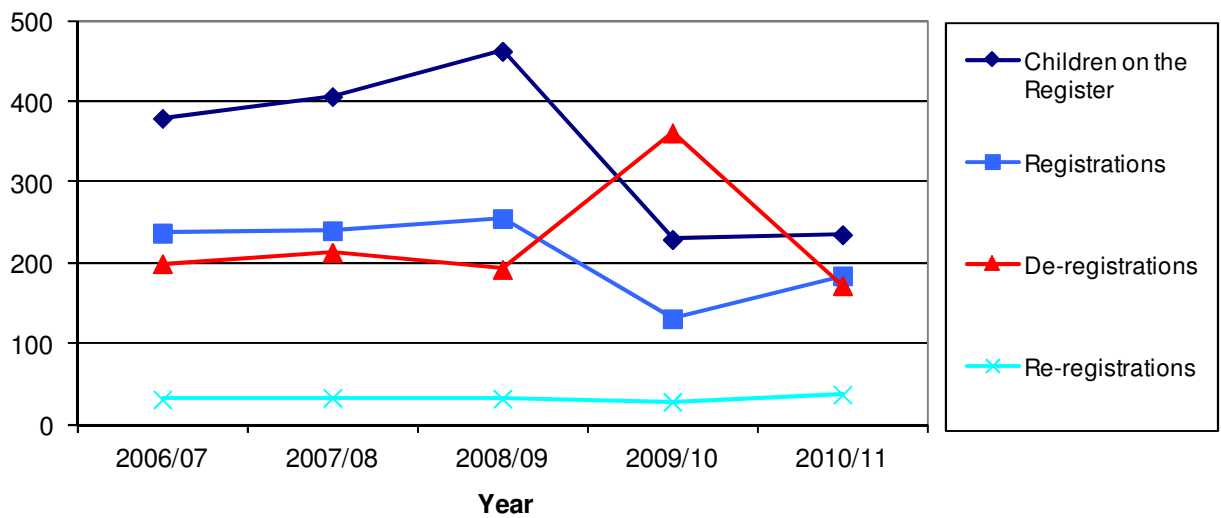
Table 1: Western Health and Social Care Trust Trends

| | 2006/07 | 2007/08 | 2008/09 | 2009/10 | 2010/11 |
|---|---------|---------|---------|---------|---------|
| Number of Children on Child Protection Register at 31 March | 379 | 406 | 462 | 229 | 235 |
| Number of Child Protection Registrations during year ended 31 March | 237 | 240 | 255 | 131 | 184 |
| Number of Child Protection De-registrations during year ended 31 March | 199 | 213 | 192 | 361 | 172 |
| Number of Child Protection Re-registrations at 31 March | 31 | 33 | 32 | 28 | 37 |
| Number of Looked After Children at 31 March | 427 | 426 | 425 | 422 | 400 |
| Admissions to Care during year ended 31 March | 58 | 122 | 121 | 68 | 84 |
| Discharges from Care during year ended 31 March | 50 | 127 | 95 | 84 | 103 |
| Number of Children who Received Respite Care during year ended 31 March | 58 | 100 | 96 | 115 | 116 |
| Number of Children in Need Referrals during year ended 31 March | 5,253 | 4,735 | 4,920 | 4,809 | 4,772 |
| Number of Children Referred during year ended 31 March | 3,652 | 3,383 | 3,900 | 3,767 | 4,031 |
| Number of Children Referred with a Disability during year ended 31 March | 369 | 316 | 270 | 231 | 230 |

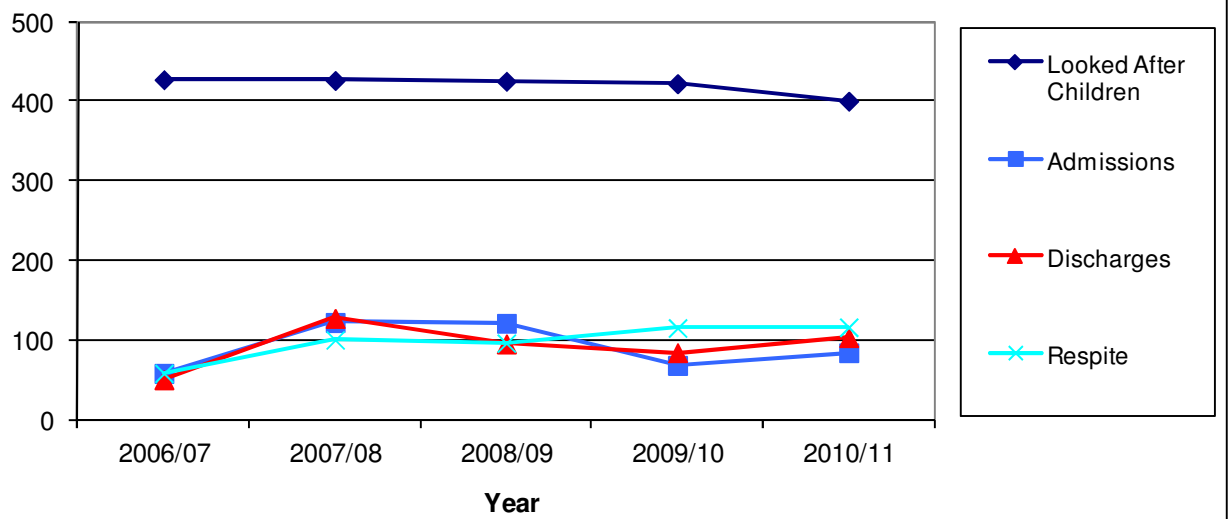
Table 2: Western Health and Social Care Trust Trends per 10,000 of the Population under 18

| | 2006/07 | 2007/08 | 2008/09 | 2009/10 | 2010/11 |
|---|---------|---------|---------|---------|---------|
| Number of Children on Child Protection Register at 31 March | 49.2 | 52.9 | 60.3 | 29.9 | 30.9 |
| Number of Child Protection Registrations during year ended 31 March | 30.7 | 31.2 | 33.3 | 17.1 | 24.2 |
| Number of Child Protection De-registrations during year ended 31 March | 25.8 | 27.7 | 25.1 | 47.1 | 22.6 |
| Number of Child Protection Re-registrations at 31 March | 4.0 | 4.3 | 4.2 | 3.7 | 4.9 |
| Number of Looked After Children at 31 March | 55.4 | 55.5 | 55.5 | 55.1 | 52.5 |
| Admissions to Care during year ended 31 March | 7.5 | 15.9 | 15.8 | 8.9 | 11.0 |
| Discharges from Care during year ended 31 March | 6.5 | 16.5 | 12.4 | 11.0 | 13.5 |
| Number of Children who Received Respite Care during year ended 31 March | 7.5 | 13.0 | 12.5 | 15.0 | 15.2 |
| Number of Children in Need Referrals during year ended 31 March | 681.3 | 616.4 | 641.9 | 627.4 | 626.5 |
| Number of Children Referred during year ended 31 March | 473.6 | 440.4 | 508.8 | 491.5 | 529.3 |
| Number of Children Referred with a Disability during year ended 31 March | 47.9 | 41.1 | 35.2 | 30.1 | 30.2 |

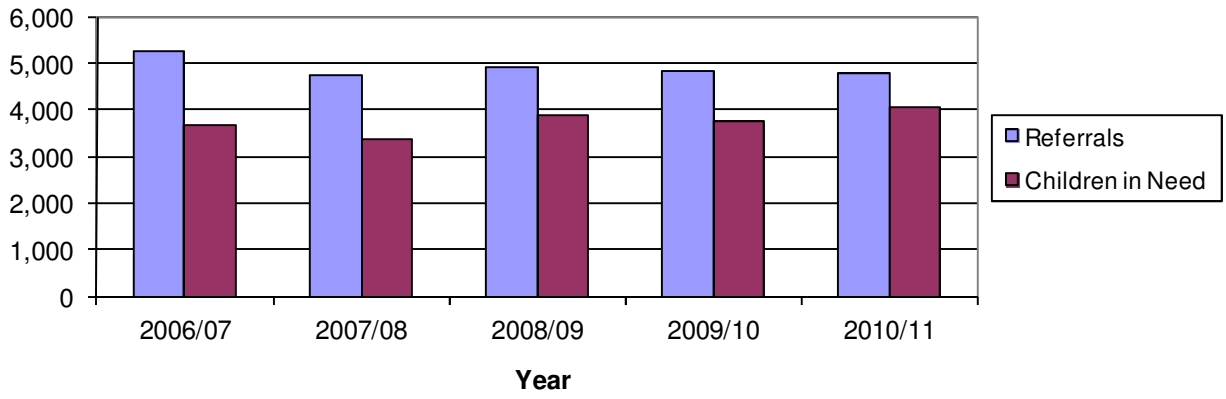
The Number of Children on the Child Protection Register at 31 March in Comparison with Registrations, De-registrations and Re-registrations for year ended 31 March



The Number of Looked After Children at 31 March in Comparison to Admissions to Care, Discharges from Care and the Number of Children who received Respite Care for year ended 31 March



The Number of Children in Need Referrals in Comparison to the Number of Children Referred for year ended 31 March



Additional Information

Further information on Children Order Statistical Trends for Northern Ireland 2005/06 to 2010/11 is available from:

Iain Waugh

Community Information Branch

Department of Health, Social Services and Public Safety

Annexe 2

Castle Buildings

Stormont

BT4 3SQ



(028) 9052 0599

Fax: (028) 9052 3288

Email: cib@dhsspsni.gov.uk

This and other statistical bulletins published by Community Information Branch are available to download from the DHSSPS internet at:

http://www.dhsspsni.gov.uk/index/stats_research/stats-cib-3/statistics_and_research-cib-pub/children_statistics.htm