

Part A: Persons Waiting for Assessment

Quarterly Figures

Numbers of Persons Waiting for Assessment

Table A.1 provides an analysis of the number of persons waiting for assessment by community occupational therapists, according to whether these were priority cases or other cases. This table shows the figures for 31 December 2003, and includes comparisons with the position at the end of the previous quarter and the end of the corresponding quarter last year.

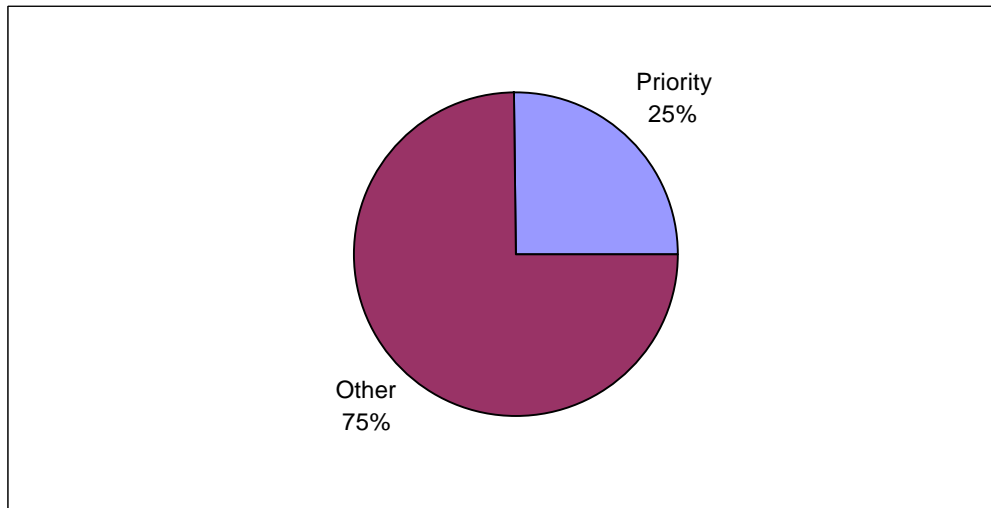
Table A.1 Persons Waiting for Assessment, by Quarter

	Quarter Ending:			Quarterly Change	Annual Change
	Dec 03	Sept 03	Dec 02		
Priority Cases	2,219	1,880	1,931	+339	+288
Other Cases	6,517	6,390	7,513	+127	-996
All Persons Waiting	8,736	8,270	9,444	+466	-708

Source: CP4

Figure A.1 shows the percentages of priority and other cases waiting for assessment at the end of December 2003.

Figure A.1 Persons Waiting for Assessment, according to Priority and Other Cases

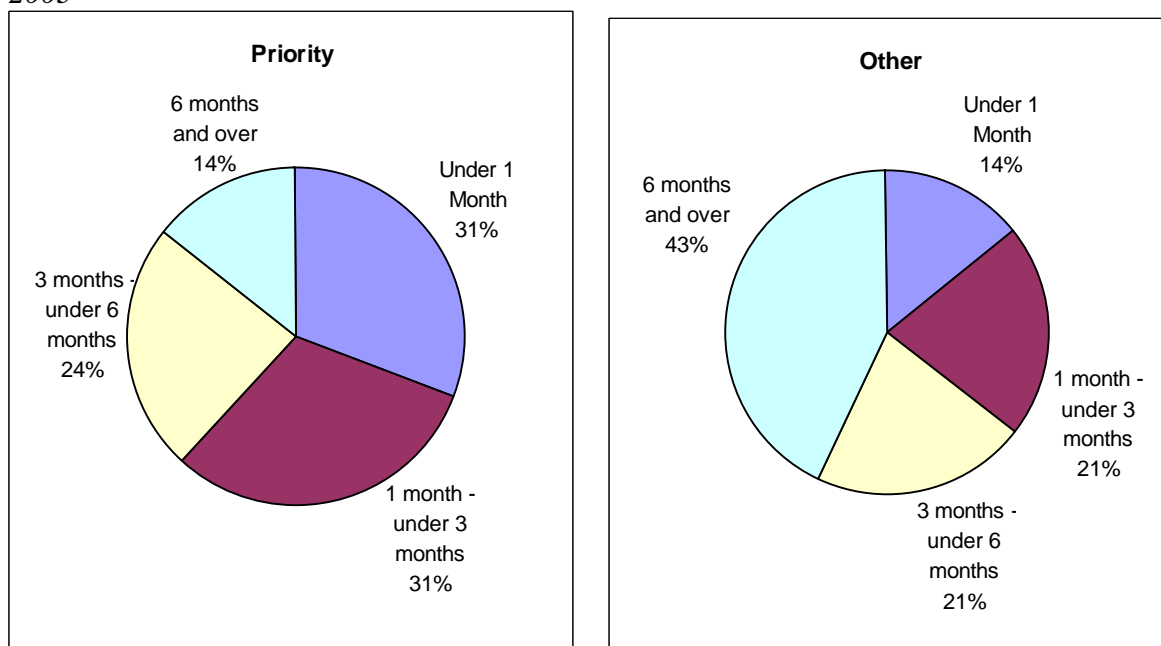


Source: CP4

Number of Persons Waiting for Assessment, by Length of Time Waiting

Figure A.2 provides an analysis of persons waiting for assessment, according to length of time waiting, for the quarter ending December 2003. This is shown for priority and other cases.

Figure A.2 Persons Waiting for Assessment, by Time Waiting, Quarter Ending 31 December 2003



Source: CP4

Table A.2 shows the number of persons waiting for assessment, by length of time waiting, for the current quarter, previous quarter and corresponding quarter last year. This is shown for priority cases, other cases and all cases.

Table A.2 Persons Waiting for Assessment, by Time Waiting and Quarter

(a) Priority Cases

	Quarter Ending:			Quarterly Change	Annual Change
	Dec 03	Sept 03	Dec 02		
Under 1 month	683	725	668	-42	+15
1 month - under 3 months	685	515	673	+170	+12
3 months - under 6 months	531	397	379	+134	+152
6 months and over	320	243	211	+77	+109
All Priority Cases	2,219	1,880	1,931	+339	+288

Source: CP4

(b) Other Cases

	Quarter Ending:			Quarterly Change	Annual Change
	Dec 03	Sept 03	Dec 02		
Under 1 month	942	1,128	862	-186	+80
1 month - under 3 months	1,377	1,443	1,676	-66	-299
3 months - under 6 months	1,365	1,449	1,756	-84	-391
6 months and over	2,833	2,370	3,219	+463	-386
All Other Cases	6,517	6,390	7,513	+127	-996

Source: CP4

(c) All Cases

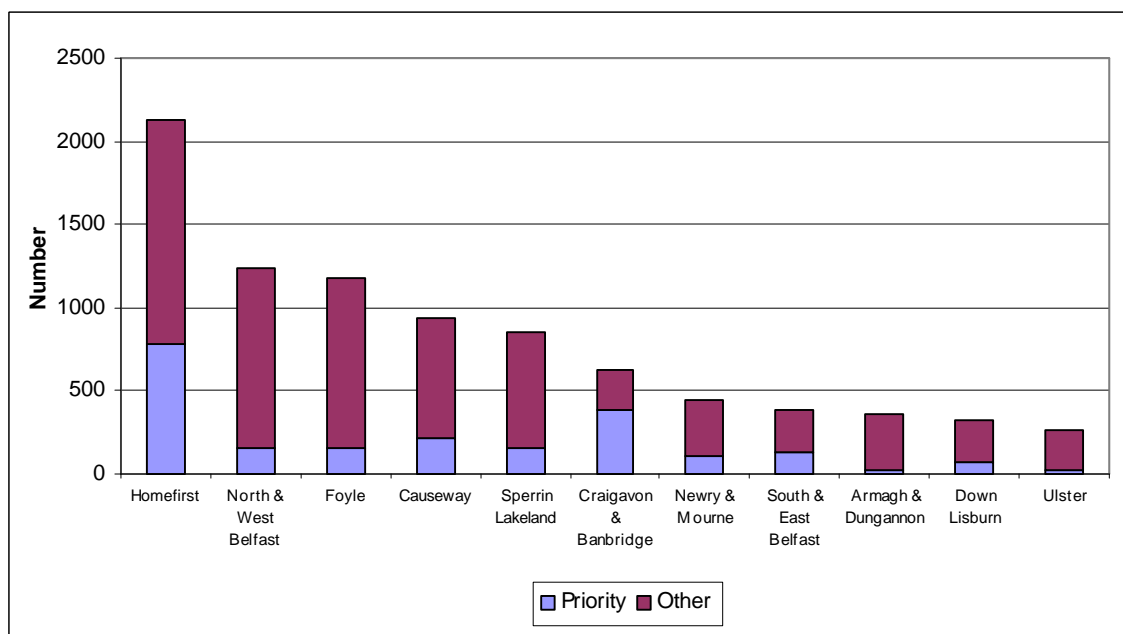
	Quarter Ending:			Quarterly Change	Annual Change
	Dec 03	Sept 03	Dec 02		
Under 1 month	1,625	1,853	1,530	-228	+95
1 month - under 3 months	2,062	1,958	2,349	+104	-287
3 months - under 6 months	1,896	1,846	2,135	+50	-239
6 months and over	3,153	2,613	3,430	+540	-277
All Cases	8,736	8,270	9,444	+466	-708

Source: CP4

Number Waiting for Assessment, by Trust

An analysis for the latest quarter of the number of persons waiting for assessment by whether they were priority cases or other cases, according to Trust, is shown in Figure A.3.

Figure A.3 Persons Waiting for Assessment, by Trust, Quarter Ending December 2003



Source: CP4

Table A.3 shows, for each Trust, the number of persons waiting according to priority and other cases, and the number and percentage waiting for six months or more.

Table A.3 Persons Waiting for Assessment, by Trust, 31 December 2003

Trust	Priority Cases			Other Cases		
	Total Waiting	Number Waiting 6 months or More	Percentage Waiting 6 Months or More	Total Waiting	Number Waiting 6 months or More	Percentage Waiting 6 Months or More
Down Lisburn	75	25	33%	251	89	35%
North & West Belfast	151	9	6%	1,082	423	39%
South & East Belfast	130	0	0%	260	13	5%
Ulster	23	0	0%	245	1	0%
Causeway	218	37	17%	714	394	55%
Homefirst	780	222	28%	1,346	604	45%
Armagh & Dungannon	30	0	0%	328	103	31%
Craigavon & Banbridge	385	0	0%	244	244	100%
Newry & Mourne	107	0	0%	336	55	16%
Foyle	159	24	15%	1,019	453	44%
Sperrin Lakeland	161	3	2%	692	454	66%
Northern Ireland	2,219	320	14%	6,517	2,833	43%

Source: CP4

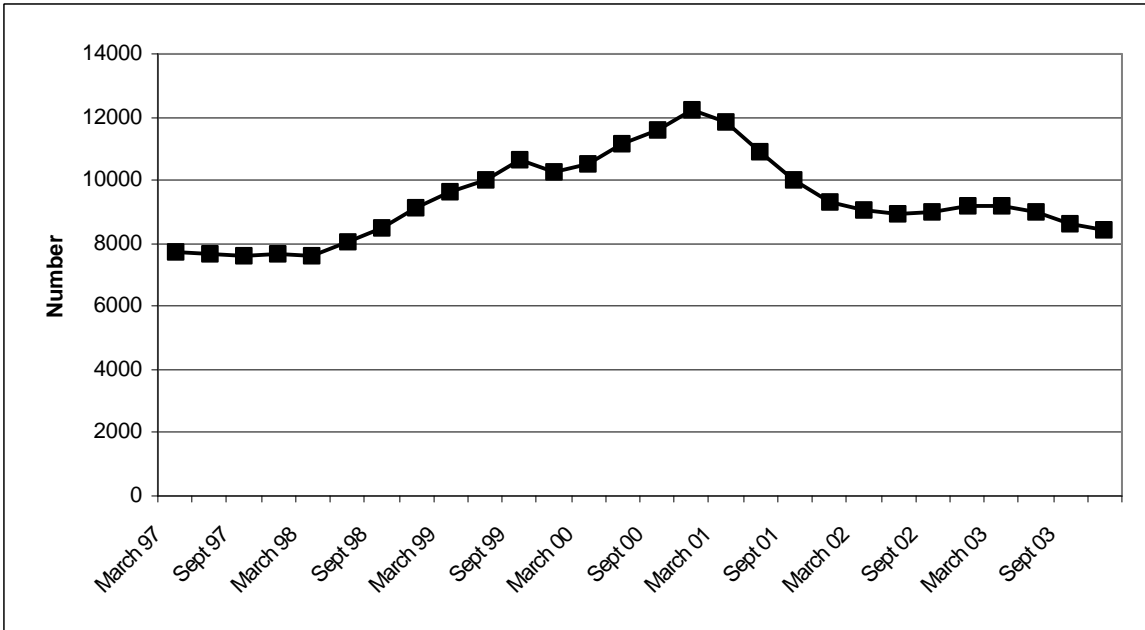
Trends

The trends described in this section are based on data which are averages of figures for four quarters. For example, the figure for December 2003 is based on the average of the figures for the four quarters ending December 2003.

Trends in Number of Persons Waiting for Assessment

There has been an overall decrease since 2000 in the number of all persons waiting for assessment (Figure A.4).

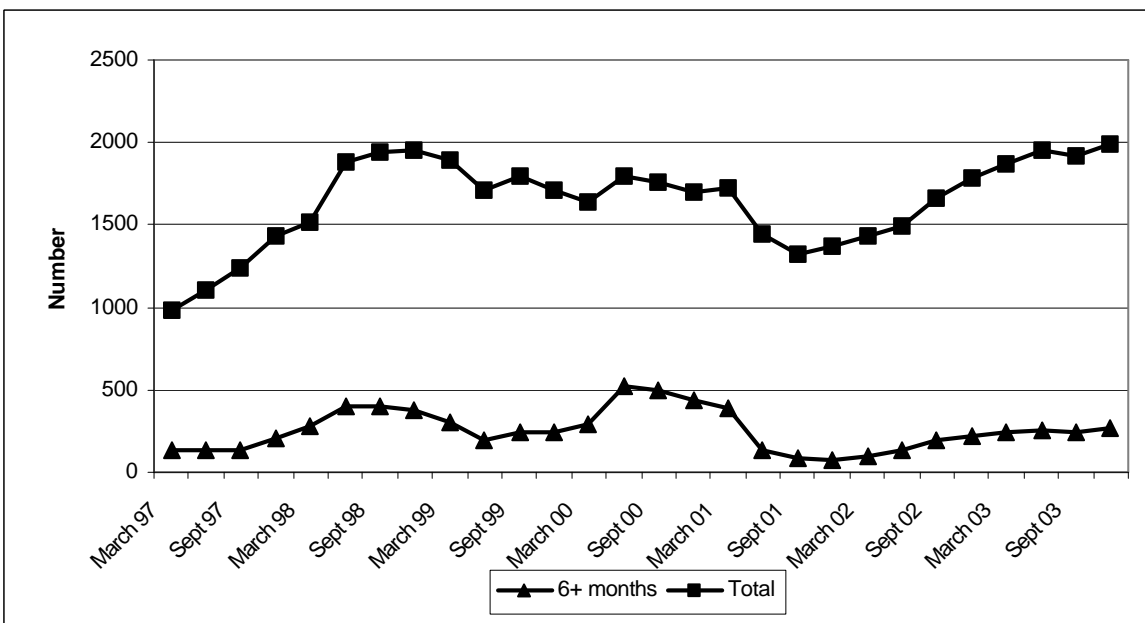
Figure A.4 Trends in Persons Waiting for Assessment



Source: CP4

In recent months, there has been an increase in the total number of priority cases waiting for assessment, and in the number of priority cases waiting for six months or more (Figure A.5).

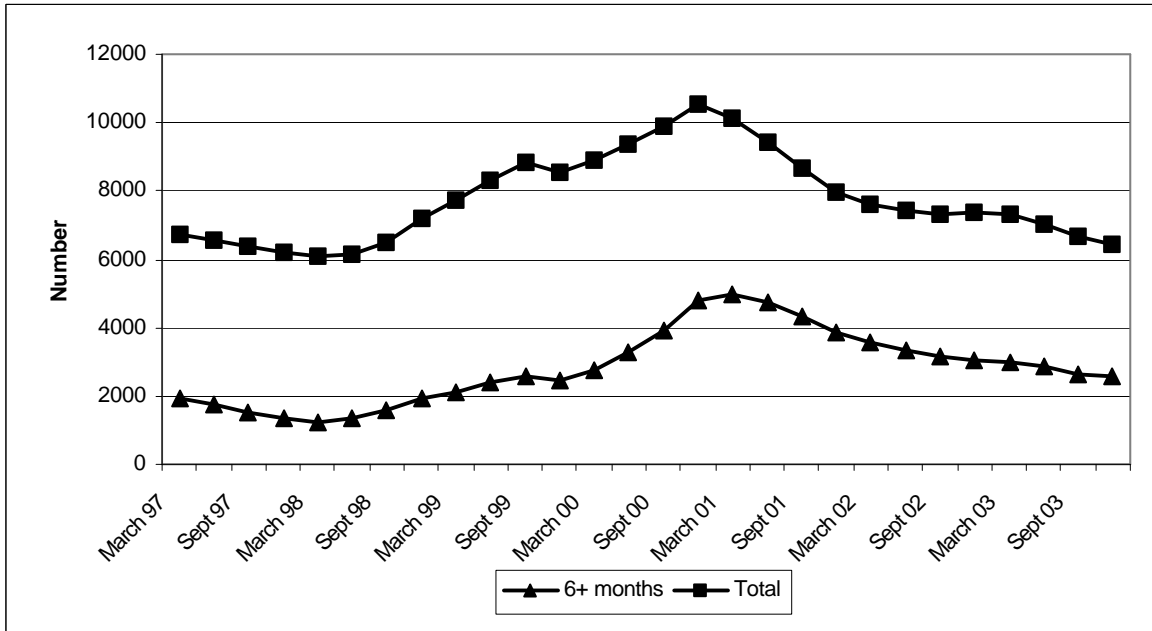
Figure A.5 Trends in Priority Cases Waiting for Assessment



Source: CP4

There has been an overall decrease since 2000 in the total number of other cases waiting for assessment and also in the total number of other cases waiting for six months or more (Figure A.6).

Figure A.6 Trends in Other Cases Waiting for Assessment



Source: CP4

Part B: Referrals

Quarterly Figures

Number of Referrals for Assessment

An analysis of the number of referrals for assessment by community occupational therapists, according to whether these were in respect of priority cases or other cases, for the quarter ending December 2003, is shown in Table B.4. This table includes comparisons with the previous quarter and the corresponding quarter last year.

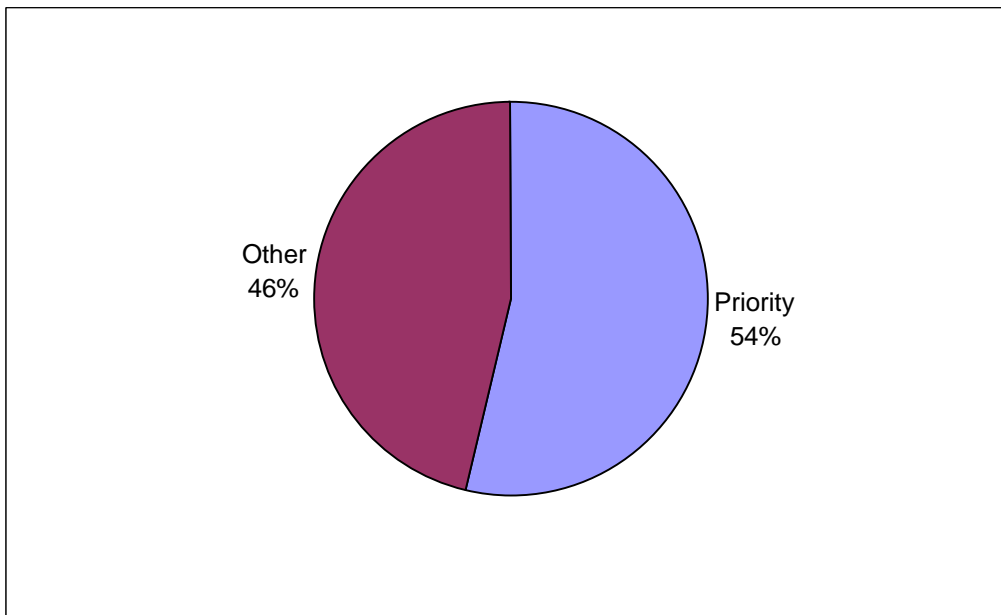
Table B.4 Referrals, by Quarter

	Quarter Ending:			Quarterly Change	Annual Change
	Dec 03	Sept 03	Dec 02		
Priority Cases	5,894	6,165	5,595	-271	+299
Other Cases	5,077	5,126	5,228	-49	-151
All Referrals	10,971	11,291	10,823	-320	+148

Source: CP4

Figure B.7 shows the percentages of referrals which were priority and other cases at the end of December 2003.

Figure B.7 Referrals, according to Priority and Other Cases

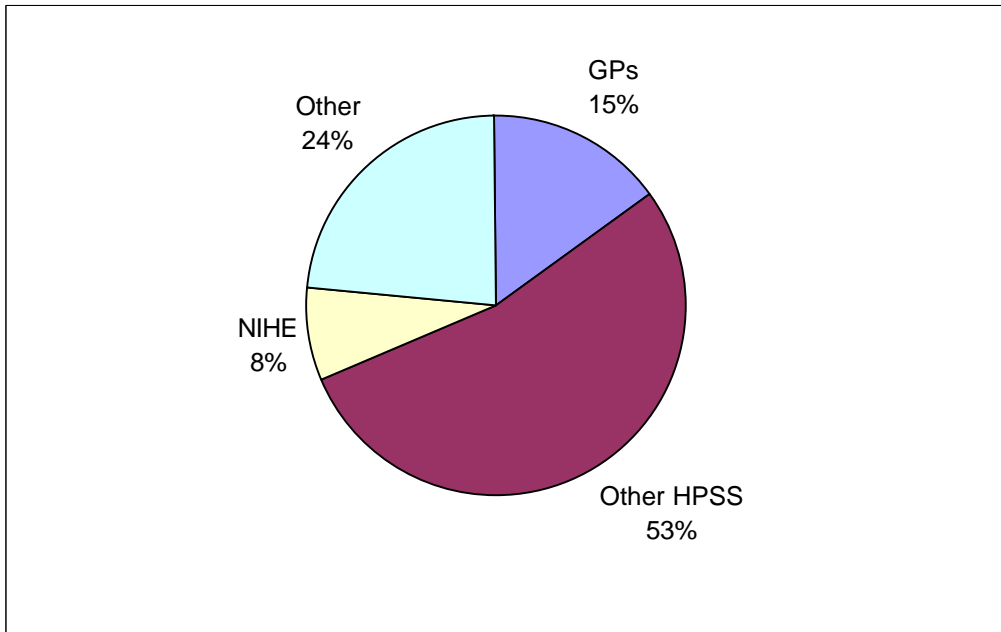


Source: CP4

Number of Referrals, by Source of Referral

Figure B.8 provides an analysis of referrals according to source, for the latest quarter.

Figure B.8 Referrals, by Source, Quarter Ending December 2003

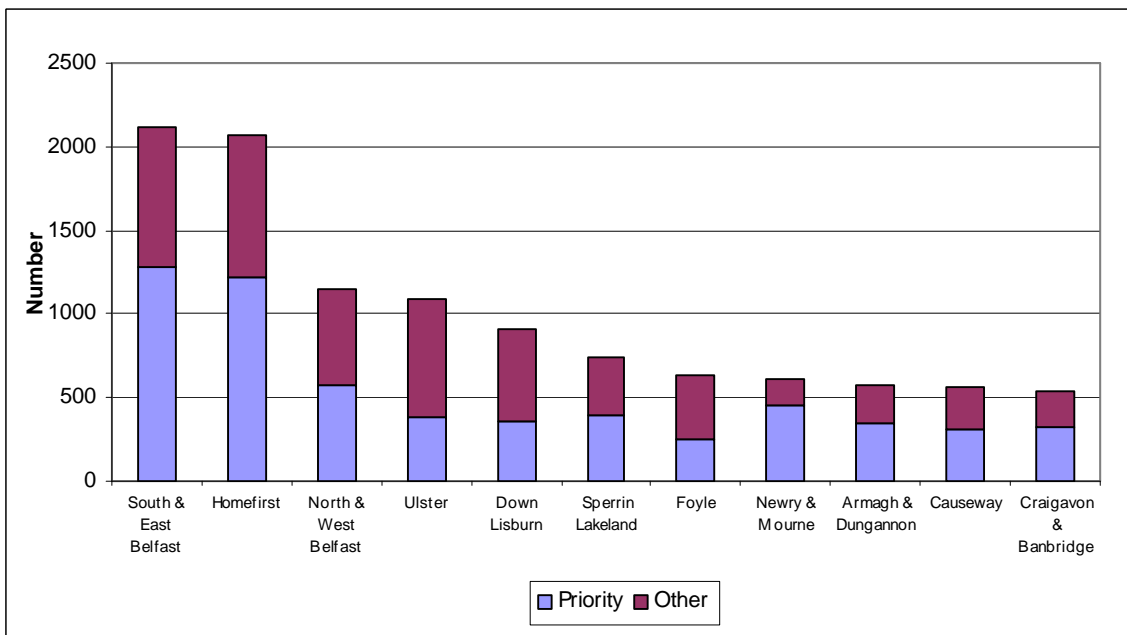


Source: CP4

Number of Referrals, by Trust

An analysis for the latest quarter of referrals by whether they were priority cases or other cases, according to Trust, is shown in Figure B.9.

Figure B.9 Referrals, by Trust, Quarter Ending December 2003



Source: CP4

Yearly Figures

Number of Referrals

Table B.5 provides an analysis of the total number of referrals, and referrals in respect of priority and other cases, for the year ending December 2003, including a comparison with the previous year.

Table B.5 Referrals, by Year

	Year Ending:		Change
	Dec 03	Dec 02	
Priority Cases	23,878	23,624	+254
Other Cases	21,194	22,047	-853
All Referrals	45,072	45,671	-599

Source: CP4

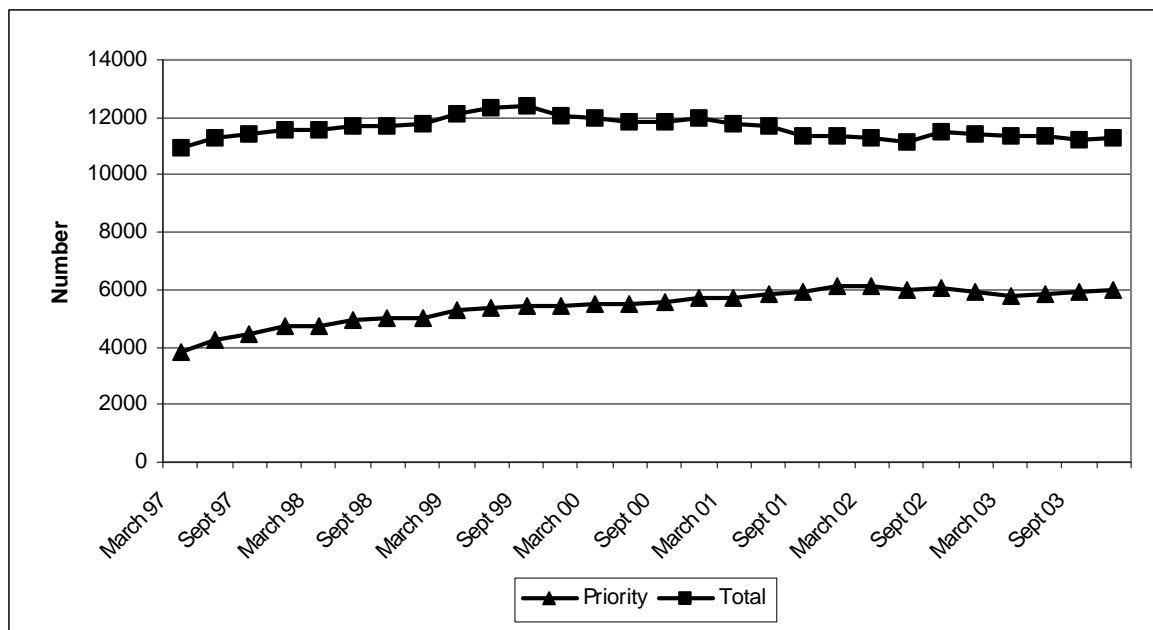
Trends

The trends described in this section are based on data which are averages of figures for four quarters. For example, the figure for December 2003 is based on the average of the figures for the four quarters ending December 2003.

Trends in Referrals

In recent months, there has been little change in the number of referrals in respect of priority cases, but there has been a slight downward trend in the total number of referrals since 1999 (Figure B.10).

Figure B.10 Trends in Referrals



Source: CP4

Part C: Assessments Commenced

Quarterly Figures

Numbers of Assessments Commenced

Table C.6 provides an analysis of the number of assessments commenced by community occupational therapists, according to whether these were in respect of priority cases or other cases. This table shows the figures for 31 December 2003, and includes comparisons with the position at the end of the previous quarter and the end of the corresponding quarter last year.

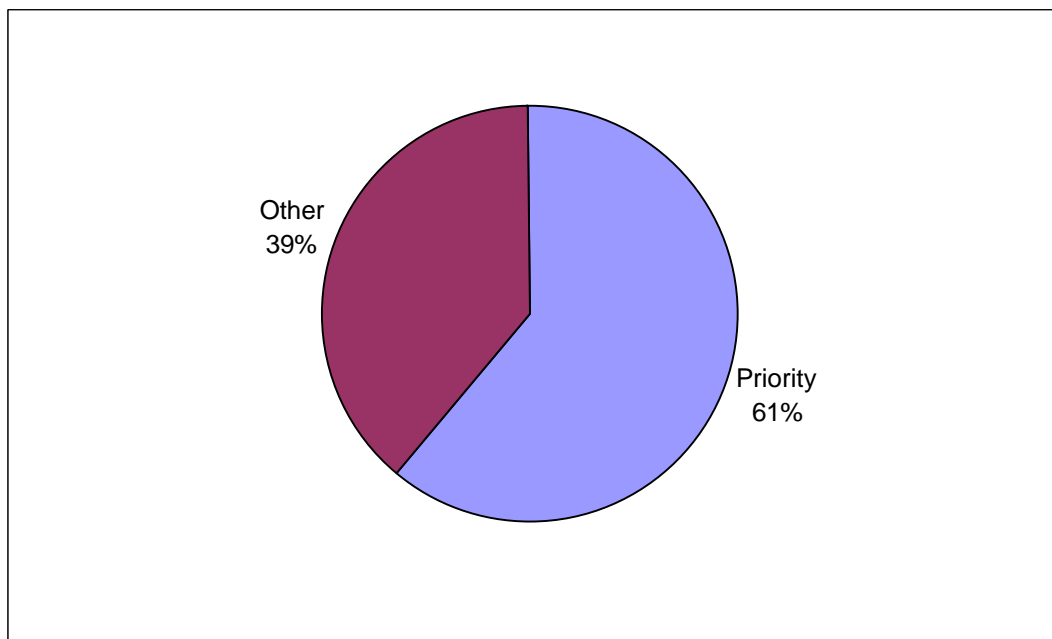
Table C.6 Assessments Commenced, by Quarter

	Quarter Ending:			Quarterly Change	Annual Change
	Dec 03	Sept 03 ¹	Dec 02		
Priority Cases	5,582	6,030	4,733	-448	+849
Other Cases	3,587	3,579	3,252	+8	+335
All Assessments Commenced	9,169	9,609	7,985	-440	+1,184

¹ Including estimated figures for Down Lisburn HSS Trust
Source: CP4

Figure C.11 shows the percentages of assessments commenced which were priority and other cases at the end of December 2003.

Figure C.11 Assessments Commenced, according to Priority and Other Cases

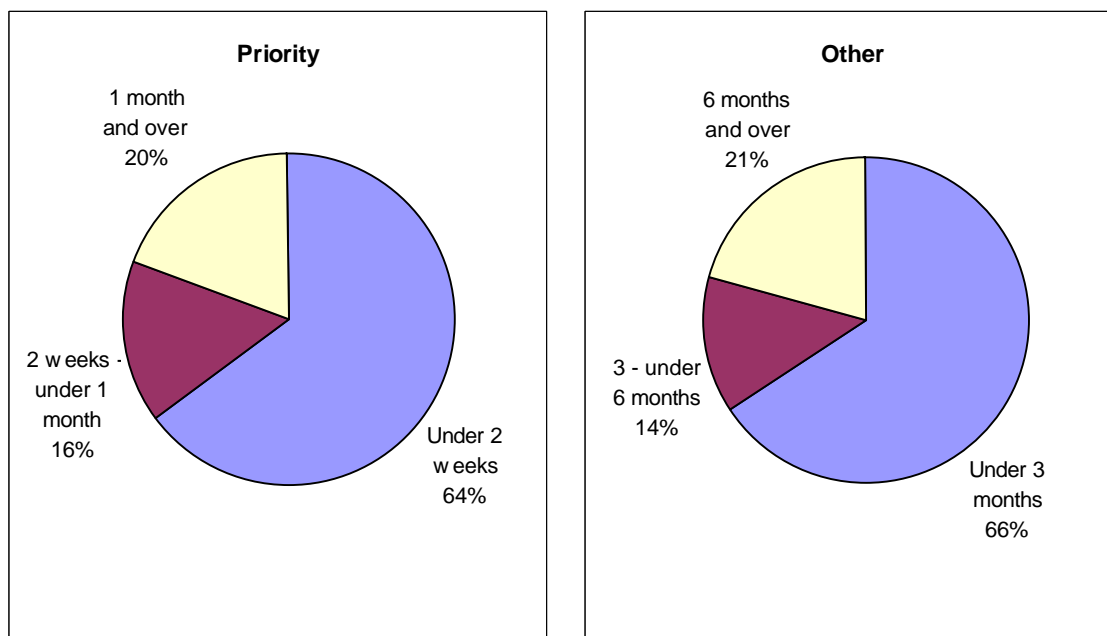


Source: CP4

Number of Assessments Commenced, by Length of Time from Referral

Figure C.12 provides an analysis of assessments commenced, according to length of time between referral and start of assessment, for the quarter ending December 2003. This is shown for priority and other cases.

Figure C.12 Assessments Commenced, by Time from Referral, Quarter Ending 31 December 2003



Source: CP4

Table C.7 shows the number of assessments commenced, by length of time from referral, for the current quarter, previous quarter and corresponding quarter last year. This is shown for priority cases and other cases.

Table C.7 Assessments Commenced, by Time from Referral and Quarter Ending 31 December 2003

(a) Priority Cases

	Quarter Ending:			Quarterly Change	Annual Change
	Dec 03	Sept 03 ¹	Dec 02		
Under 2 weeks	3,592	3,797	2,884	-205	+708
2 weeks - under 1 month	898	887	728	+11	+170
1 month and over	1,092	1,346	1,121	-254	-29
All Priority Cases	5,582	6,030	4,733	-448	+849

¹ Including estimated figures for Down Lisburn HSS Trust

Source: CP4

(b) Other Cases

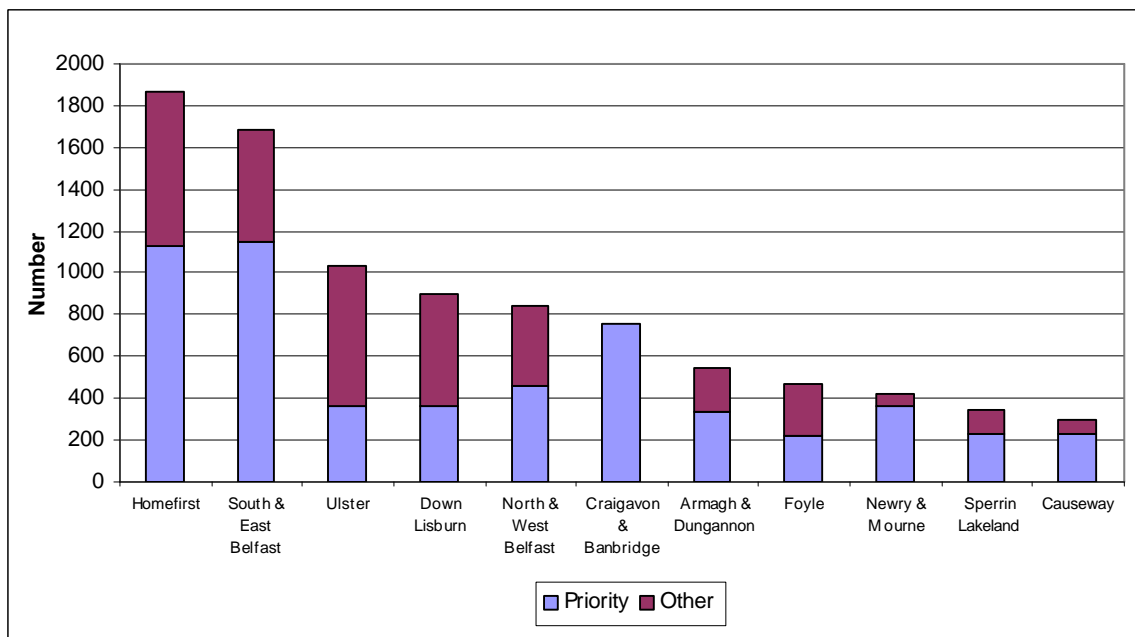
	Quarter Ending:			Quarterly Change	Annual Change
	Dec 03	Sept 03 ¹	Dec 02		
Under 3 months	2,352	2,377	1,861	-25	+491
3 months - under 6 months	492	506	474	-14	+18
6 months and over	743	696	917	+47	-174
All Other Cases	3,587	3,579	3,252	+8	+335

¹ Including estimated figures for Down Lisburn HSS Trust
Source: CP4

Number of Assessments Commenced, by Trust

An analysis for the latest quarter of assessments commenced, in respect of whether they were priority cases or other cases, according to Trust, is shown in Figure C.13.

Figure C.13 Assessments Commenced, by Trust, Quarter Ending December 2003



Source: CP4

Table C.8 shows, for each Trust, the number of assessments commenced according to priority and other cases, and the number and percentage commenced within the Charter Standard of two weeks for priority cases and three months for other cases.

Table C.8 Assessments Commenced, by Trust, 31 December 2003

Trust	Priority Cases			Other Cases		
	Total Commenced	Number Commenced within 2 Weeks	Percentage Commenced within 2 Weeks	Total Commenced	Number Commenced within 3 Months	Percentage Commenced within 3 Months
Down Lisburn	360	275	76%	540	321	59%
North & West Belfast	463	224	48%	377	116	31%
South & East Belfast	1,144	858	75%	538	495	92%
Ulster	360	317	88%	669	615	92%
Causeway	225	108	48%	75	25	33%
Homefirst	1,132	624	55%	737	482	65%
Armagh & Dungannon	336	248	74%	212	100	47%
Craigavon & Banbridge	759	440	58%	0	0	-
Newry & Mourne	359	359	100%	64	33	52%
Foyle	218	73	33%	254	102	40%
Sperrin Lakeland	226	66	29%	121	63	52%
Northern Ireland	5,582	3,592	64%	3,587	2,352	66%

Source: CP4

Yearly Figures

Number of Assessments Commenced

Table C.9 provides an analysis of the total number of assessments commenced, and assessments commenced in respect of priority and other cases, for the year ending December 2003, including a comparison with the previous year.

Table C.9 Assessments Commenced, by Year

	Year Ending:		Change
	Dec 03	Dec 02	
Priority Cases	22,843	19,853	+2,990
Other Cases	15,660	14,172	+1,488
All Assessments Commenced	38,503	34,025	+4,478

Source: CP4

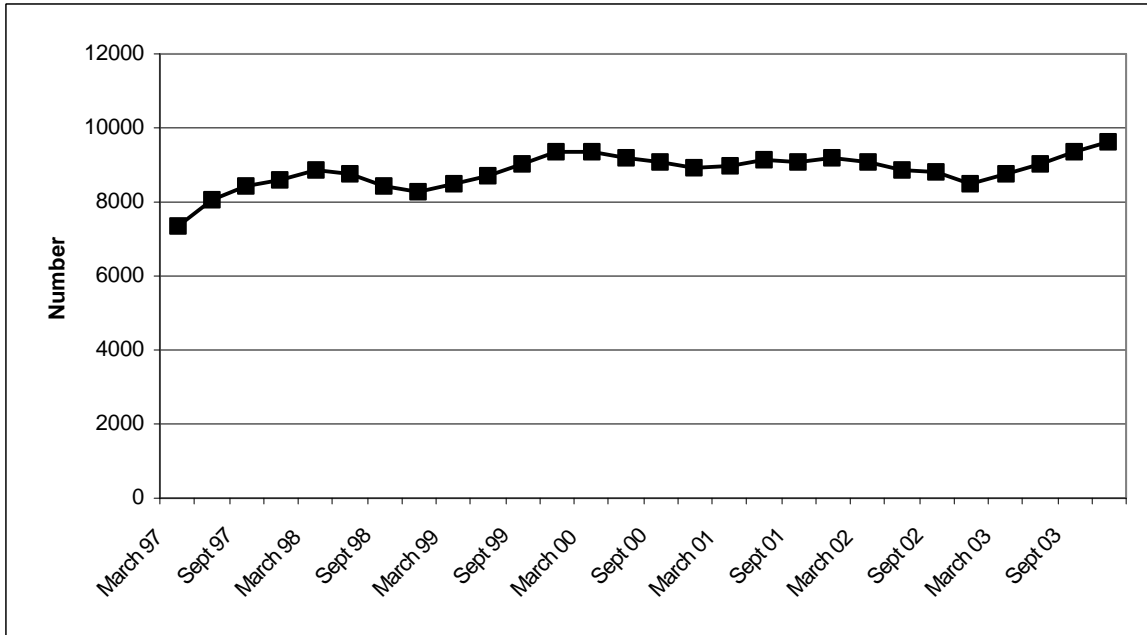
Trends

The trends described in this section are based on data which are averages of figures for four quarters. For example, the figure for December 2003 is based on the average of the figures for the four quarters ending December 2003.

Trends in Number of Assessments Commenced

Since 1997, there has been no overall trend in the number of assessments commenced (Figure C.14).

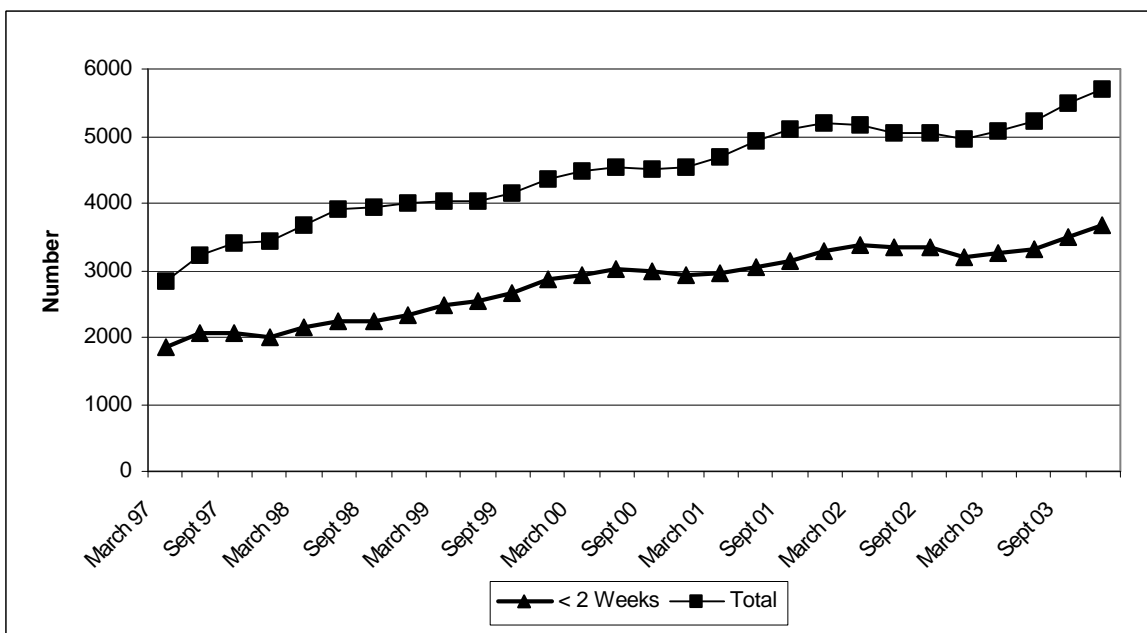
Figure C.14 Trends in Assessments Commenced



Source: CP4

Since 1997, there has been a general increase in the total number of assessments commenced in respect of priority cases and also in the total number of priority cases commenced within two weeks of referral (Figure C.15).

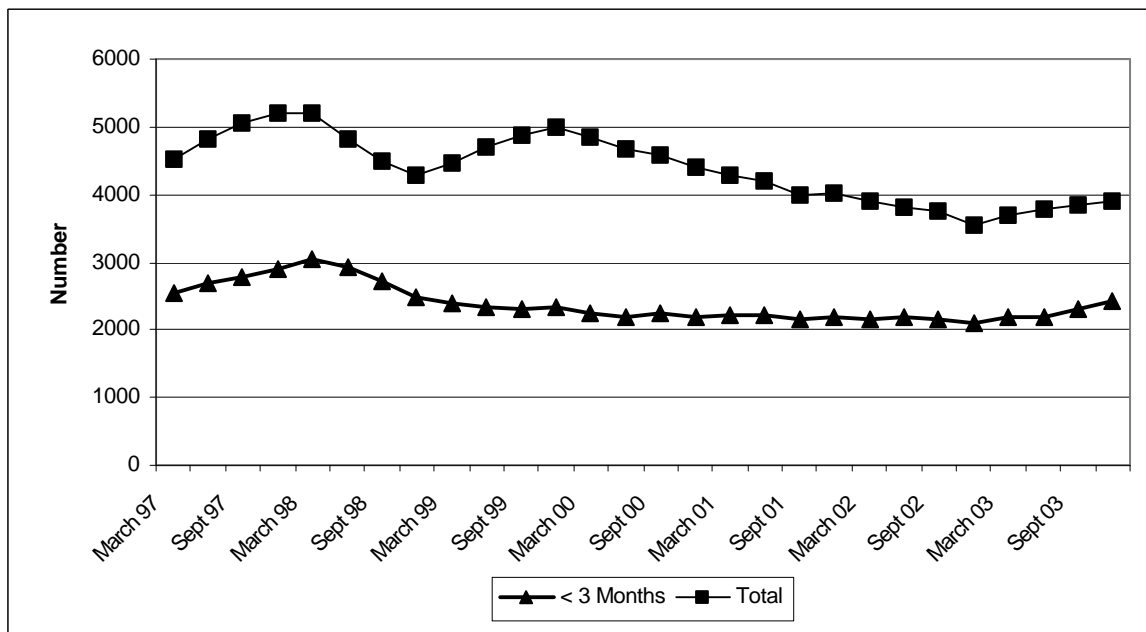
Figure C.15 Trends in Assessments Commenced in Respect of Priority Cases



Source: CP4

In recent years, there has been an overall decrease in the total number of assessments commenced in respect of other cases. Up to 2000, there was an overall decrease in the total number of other cases commenced within three months of referral, since when the figures have shown little change (Figure C.16).

Figure C.16 Trends in Assessments Commenced in Respect of Other Cases



Source: CP4