

Part A: Persons Waiting for Assessment

Quarterly Figures

Numbers of Persons Waiting for Assessment

Table A.1 provides an analysis of the number of persons waiting for assessment by community occupational therapists, according to whether these were priority cases or other cases. This table shows the figures for 30 June 2003, and includes comparisons with the position at the end of the previous quarter and the end of the corresponding quarter last year.

Table A.1 Persons Waiting for Assessment, by Quarter

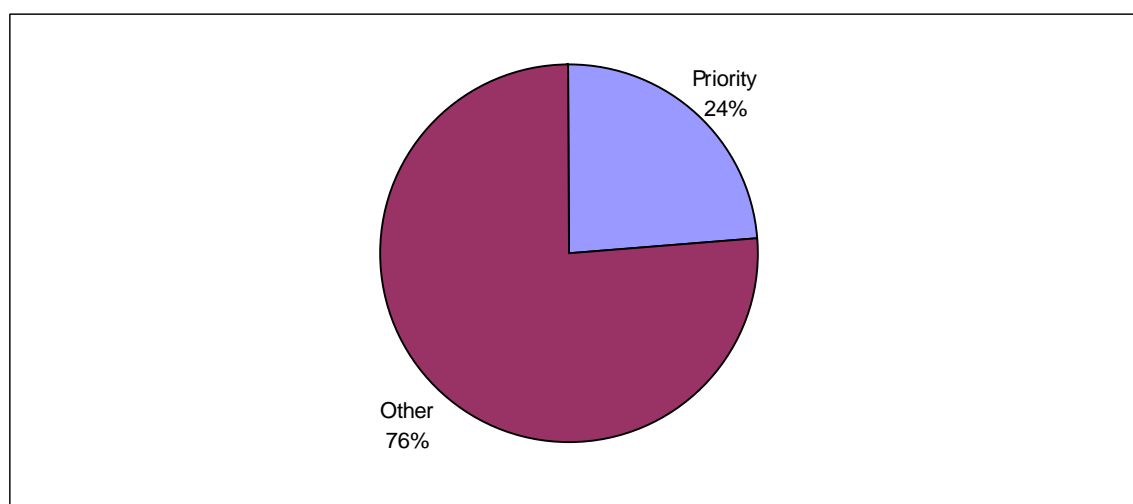
	Quarter Ending:			Quarterly Change	Annual Change
	Jun 03	Mar 03 ¹	Jun 02		
Priority Cases	1,968	1,881	1,599	+87	+369
Other Cases	6,282	6,604	7,436	-322	-1,154
All Persons Waiting	8,250	8,485	9,035	-235	-785

¹ Figures have been revised from those previously published

Source: CP4

Figure A.1 shows the percentages of priority and other cases waiting for assessment at the end of June 2003.

Figure A.1 Persons Waiting for Assessment, according to Priority and Other Cases

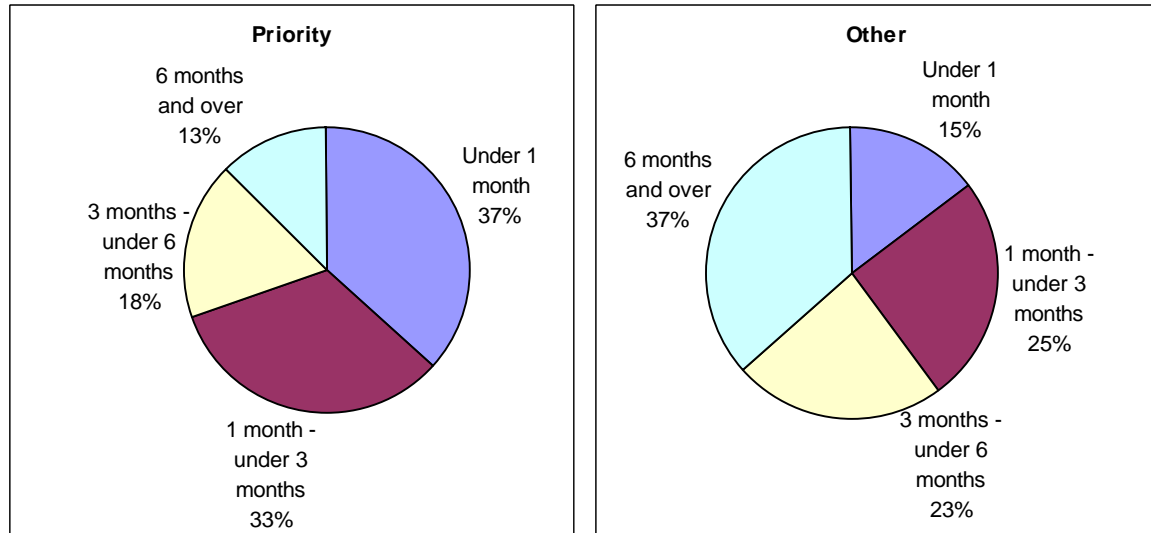


Source: CP4

Number of Persons Waiting for Assessment, by Length of Time Waiting

Figure A.2 provides an analysis of persons waiting for assessment, according to length of time waiting, for the quarter ending June 2003. This is shown for priority and other cases.

Figure A.2 Persons Waiting for Assessment, by Time Waiting, Quarter Ending 30 June 2003



Source: CP4

Table A.2 shows the number of persons waiting for assessment, by length of time waiting, for the current quarter, previous quarter and corresponding quarter last year. This is shown for priority cases, other cases and all cases.

Table A.2 Persons Waiting for Assessment, by Time Waiting and Quarter

(a) Priority Cases

	Quarter Ending:			Quarterly Change	Annual Change
	Jun 03	Mar 03 ¹	Jun 02		
Under 1 month	724	643	577	+81	+147
1 month – under 3 months	641	612	479	+29	+162
3 months – under 6 months	355	379	317	-24	+38
6 months and over	248	247	226	+1	+22
All Priority Cases	1,968	1,881	1,599	+87	+369

¹ Figures have been revised from those previously published

Source: CP4

(b) Other Cases

	Quarter Ending:			Quarterly Change	Annual Change
	Jun 03	Mar 03¹	Jun 02		
Under 1 month	941	1,051	1,092	-110	-151
1 month – under 3 months	1,548	1,493	1,704	+55	-156
3 months – under 6 months	1,469	1,341	1,650	+128	-181
6 months and over	2,324	2,719	2,990	-395	-666
All Other Cases	6,282	6,604	7,436	-322	-1,154

¹ Figures have been revised from those previously published

Source: CP4

(c) All Cases

	Quarter Ending:			Quarterly Change	Annual Change
	Jun 03	Mar 03¹	Jun 02		
Under 1 month	1,665	1,694	1,669	-29	-4
1 month – under 3 months	2,189	2,105	2,183	+84	+6
3 months – under 6 months	1,824	1,720	1,967	+104	-143
6 months and over	2,572	2,966	3,216	-394	-644
All Cases	8,250	8,485	9,035	-235	-785

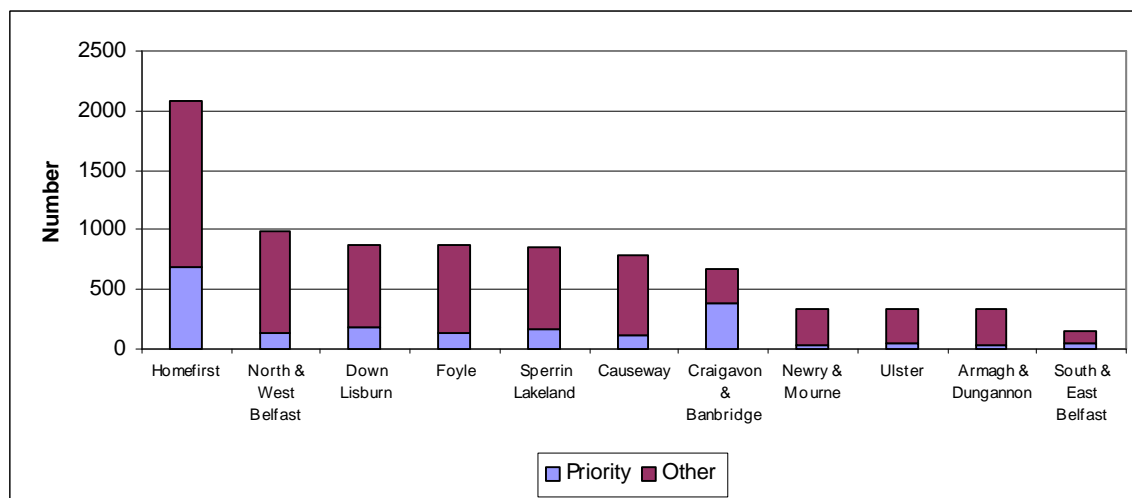
¹ Figures have been revised from those previously published

Source: CP4

Number Waiting for Assessment, by Trust

An analysis for the latest quarter of the number of persons waiting for assessment by whether they were priority cases or other cases, according to Trust, is shown in Figure A.3.

Figure A.3 Persons Waiting for Assessment, by Trust, Quarter Ending June 2003



Source: CP4

Table A.3 shows, for each Trust, the number of persons waiting according to priority and other cases, and the number and percentage waiting for six months or more.

Table A.3 Persons Waiting for Assessment, by Trust, 30 June 2003

<u>Trust</u>	Priority Cases			Other Cases		
	Total Waiting	Number Waiting 6 Months or More	Percentage Waiting 6 Months or More	Total Waiting	Number Waiting 6 Months or More	Percentage Waiting 6 Months or More
Down Lisburn	180	87	48%	689	261	38%
North & West Belfast	131	2	2%	852	234	27%
South & East Belfast	58	0	0%	88	0	0%
Ulster	47	1	2%	285	20	7%
Causeway	118	0	0%	674	282	42%
Homefirst	687	152	22%	1,386	607	44%
Armagh & Dungannon	32	0	0%	300	28	9%
Craigavon & Banbridge	390	0	0%	276	276	100%
Newry & Mourne	35	0	0%	305	9	3%
Foyle	126	4	3%	739	144	19%
Sperrin Lakeland	164	2	1%	688	463	67%
Northern Ireland	1,968	248	13%	6,282	2,324	37%

Source: CP4

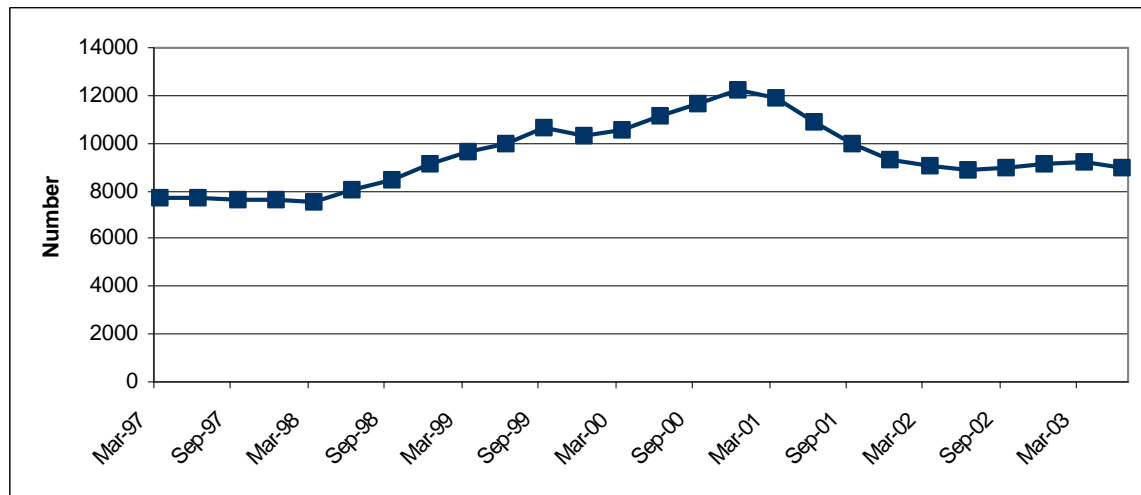
Trends

The trends described in this section are based on data which are averages of figures for four quarters. For example, the figure for June 2003 is based on the average of the figures for the four quarters ending June 2003.

Trends in Number of Persons Waiting for Assessment

There has been an overall decrease since 2000 in the number of all persons waiting for assessment (Figure A.4).

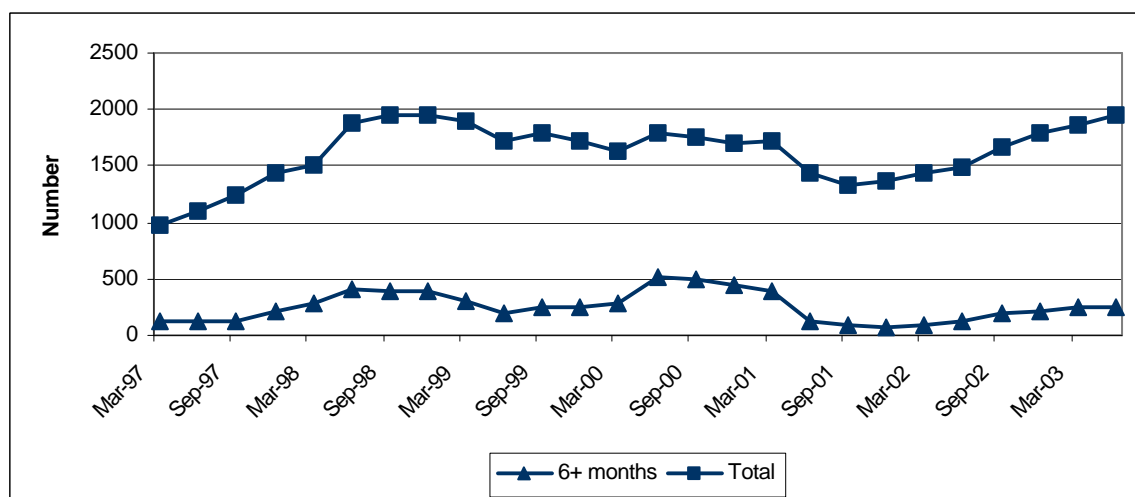
Figure A.4 Trends in Persons Waiting for Assessment



Source: CP4

In recent months, there has been an increase in the total number of priority cases waiting for assessment, and in the number of priority cases waiting for six months or more (Figure A.5).

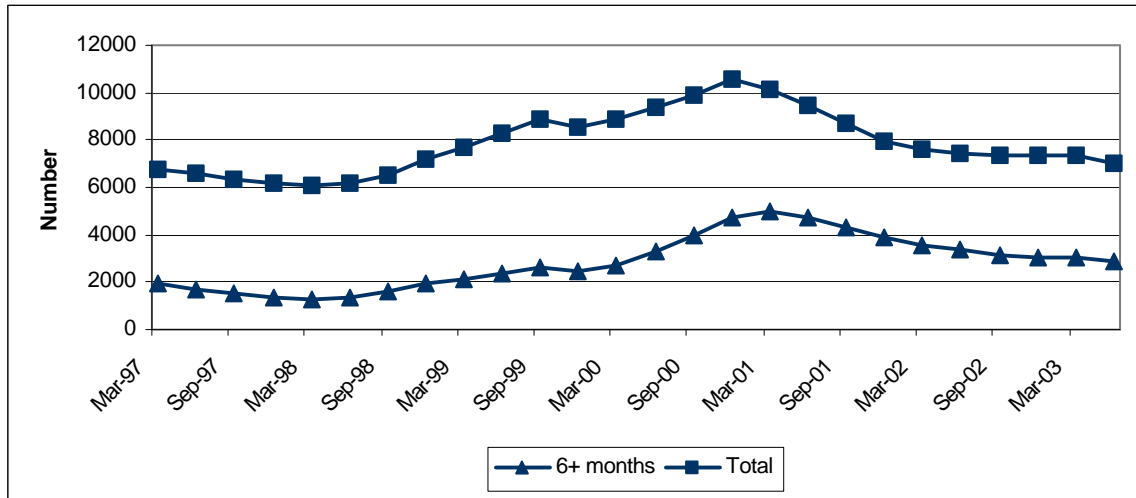
Figure A.5 Trends in Priority Cases Waiting for Assessment



Source: CP4

There has been an overall decrease since 2000 in the total number of other cases waiting for assessment and also in the total number of other cases waiting for six months or more (Figure A.6).

Figure A.6 Trends in Other Cases Waiting for Assessment



Source: CP4

Part B: Referrals

Quarterly Figures

Number of Referrals for Assessment

An analysis of the number of referrals for assessment by community occupational therapists, according to whether these were in respect of priority cases or other cases, for the quarter ending June 2003, is shown in Table B.4. This table includes comparisons with the previous quarter and the corresponding quarter last year.

Table B.4 Referrals, by Quarter

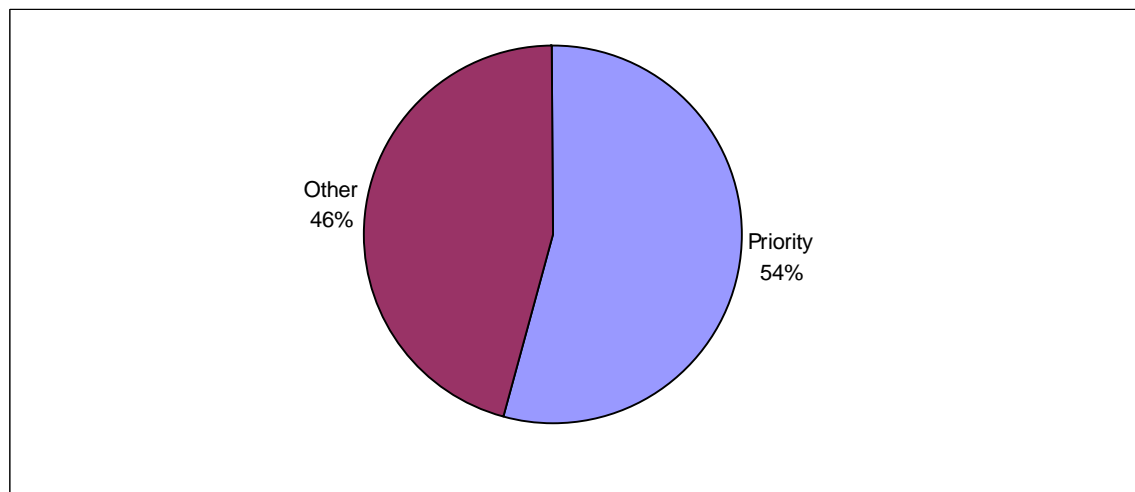
	Quarter Ending:			Quarterly Change	Annual Change
	Jun 03	Mar 03 ¹	Jun 02		
Priority Cases	6,175	5,734	5,859	+441	+316
Other Cases	5,213	5,633	5,543	-420	-330
All Referrals	11,388	11,367	11,402	+21	-14

1 Figures have been revised from those previously published

Source: CP4

Figure B.7 shows the percentages of referrals which were priority and other cases at the end of June 2003.

Figure B.7 Referrals, according to Priority and Other Cases

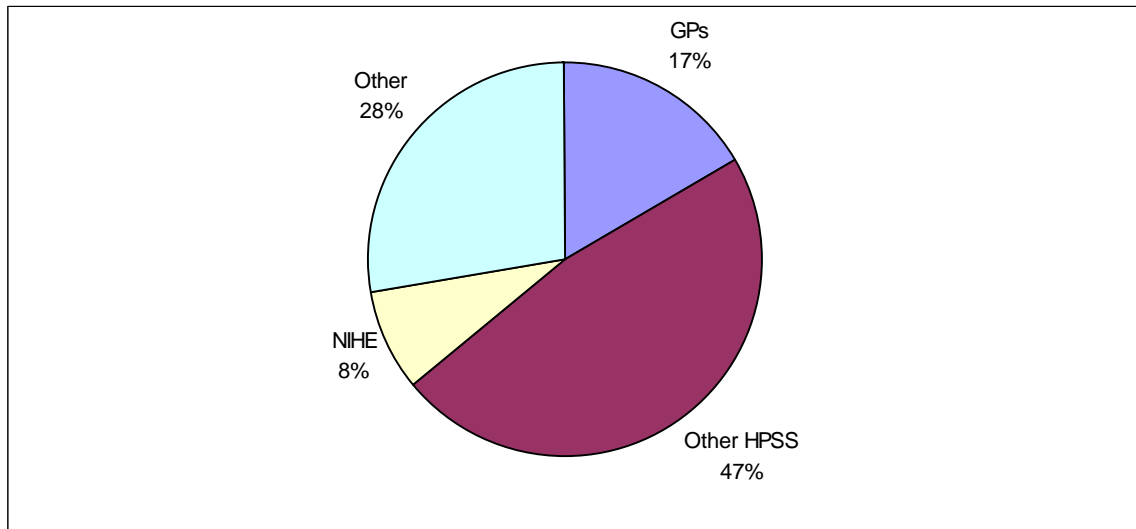


Source: CP4

Number of Referrals, by Source of Referral

Figure B.8 provides an analysis of referrals according to source, for the latest quarter.

Figure B.8 Referrals, by Source, Quarter Ending June 2003

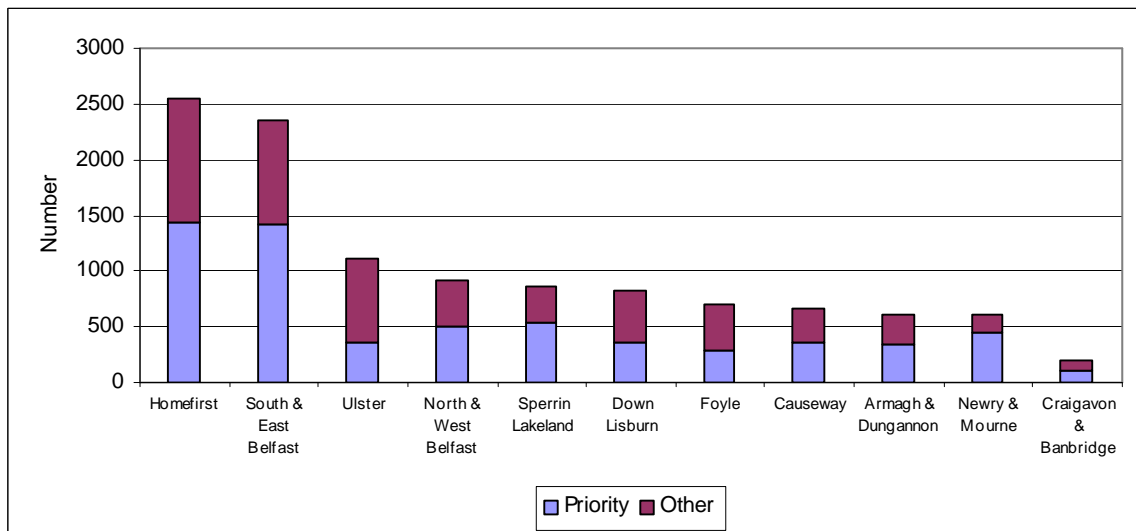


Source: CP4

Number of Referrals, by Trust

An analysis for the latest quarter of referrals by whether they were priority cases or other cases, according to Trust, is shown in Figure B.9.

Figure B.9 Referrals, by Trust, Quarter Ending June 2003



Source: CP4

Yearly Figures

Number of Referrals

Table B.5 provides an analysis of the total number of referrals, and referrals in respect of priority and other cases, for the year ending June 2003, including a comparison with the previous year.

Table B.5 Referrals, by Year

	Year Ending:		Change
	Jun 03	Jun 02	
Priority Cases	23,379	24,035	-656
Other Cases	22,010	20,516	+1,494
All Referrals	45,389	44,551	+838

Source: CP4

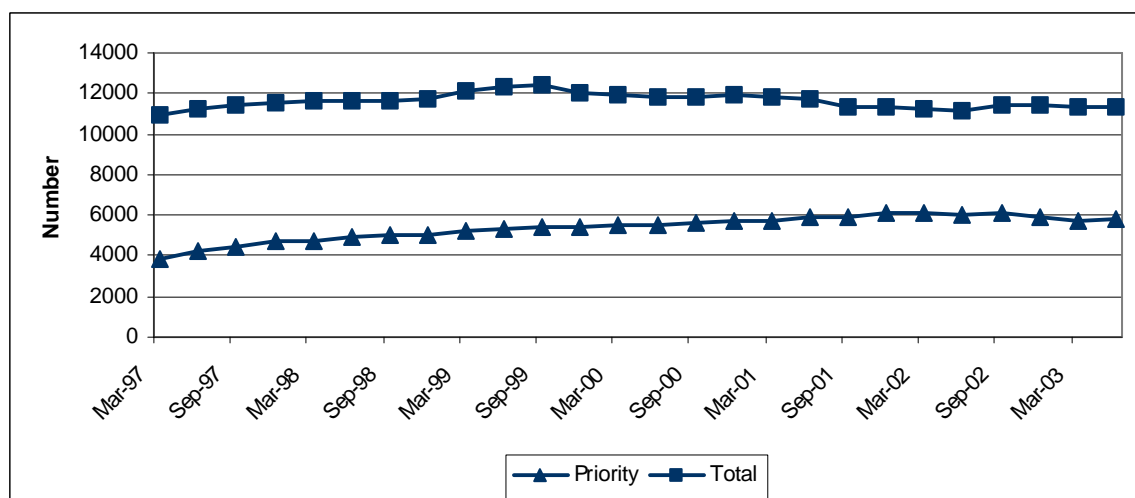
Trends

The trends described in this section are based on data which are averages of figures for four quarters. For example, the figure for June 2003 is based on the average of the figures for the four quarters ending June 2003.

Trends in Referrals

In recent months, there has been little change in the number of referrals in respect of priority cases, but there has been a slight downward trend in the total number of referrals since 1999 (Figure B.10).

Figure B.10 Trends in Referrals



Source: CP4

Part C: Assessments Commenced

Quarterly Figures

Numbers of Assessments Commenced

Table C.6 provides an analysis of the number of assessments commenced by community occupational therapists, according to whether these were in respect of priority cases or other cases. This table shows the figures for 30 June 2003, and includes comparisons with the position at the end of the previous quarter and the end of the corresponding quarter last year.

Table C.6 Assessments Commenced, by Quarter

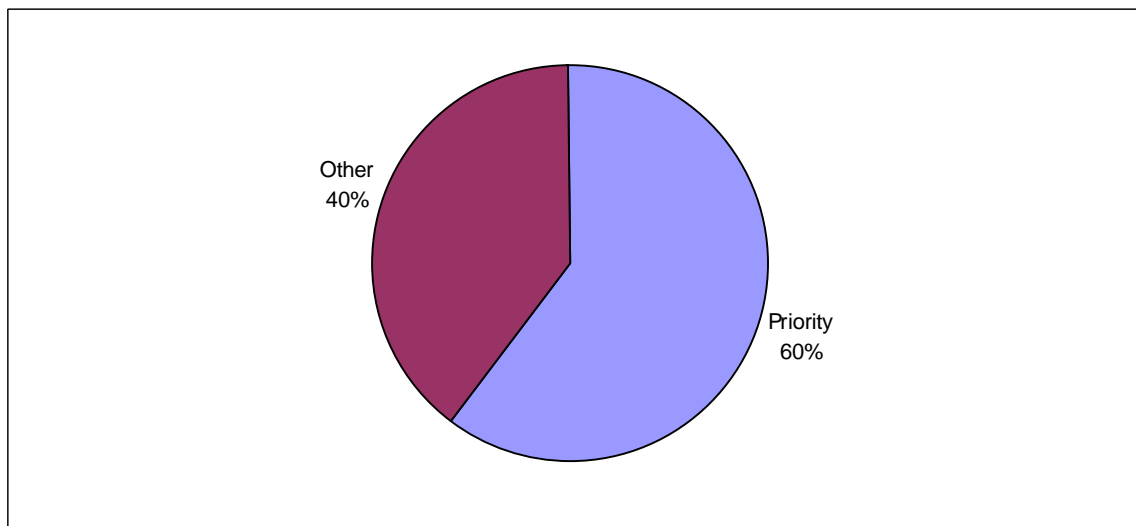
	Quarter Ending:			Quarterly Change	Annual Change
	Jun 03	Mar 03 ¹	Jun 02		
Priority Cases	5,594	5,637	4,977	-43	+617
Other Cases	3,748	4,746	3,421	-998	+327
All Assessments Commenced	9,342	10,383	8,398	-1,041	+944

¹ Figures have been revised from those previously published

Source: CP4

Figure C.11 shows the percentages of assessments commenced which were priority and other cases at the end of June 2003.

Figure C.11 Assessments Commenced, according to Priority and Other Cases

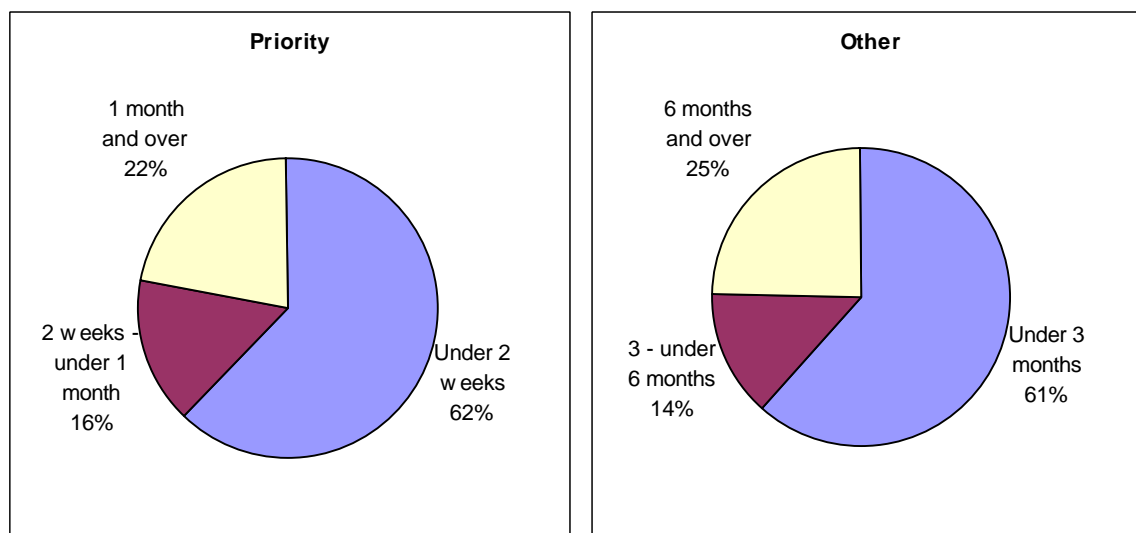


Source: CP4

Number of Assessments Commenced, by Length of Time from Referral

Figure C.12 provides an analysis of assessments commenced, according to length of time between referral and start of assessment, for the quarter ending June 2003. This is shown for priority and other cases.

Figure C.12 Assessments Commenced, by Time from Referral, Quarter Ending 30 June 2003



Source: CP4

Table C.7 shows the number of assessments commenced, by length of time from referral, for the current quarter, previous quarter and corresponding quarter last year. This is shown for priority cases and other cases.

Table C.7 Assessments Commenced, by Time from Referral and Quarter

(a) Priority Cases

	Quarter Ending:			Quarterly Change	Annual Change
	Jun 03	Mar 03 ¹	Jun 02		
Under 2 weeks	3,462	3,778	3,263	-316	+199
2 weeks – under 1 month	890	770	781	+120	+109
1 month and over	1,242	1,089	933	+153	+309
All Priority Cases	5,594	5,637	4,977	-43	+617

¹ Figures have been revised from those previously published

Source: CP4

(b) Other Cases

	Quarter Ending:			Quarterly Change	Annual Change
	Jun 03	Mar 03 ¹	Jun 02		
Under 3 months	2,301	2,680	2,286	-379	+15
3 months – under 6 months	517	691	360	-174	+157
6 months and over	930	1,375	775	-445	+155
All Other Cases	3,748	4,746	3,421	-998	+327

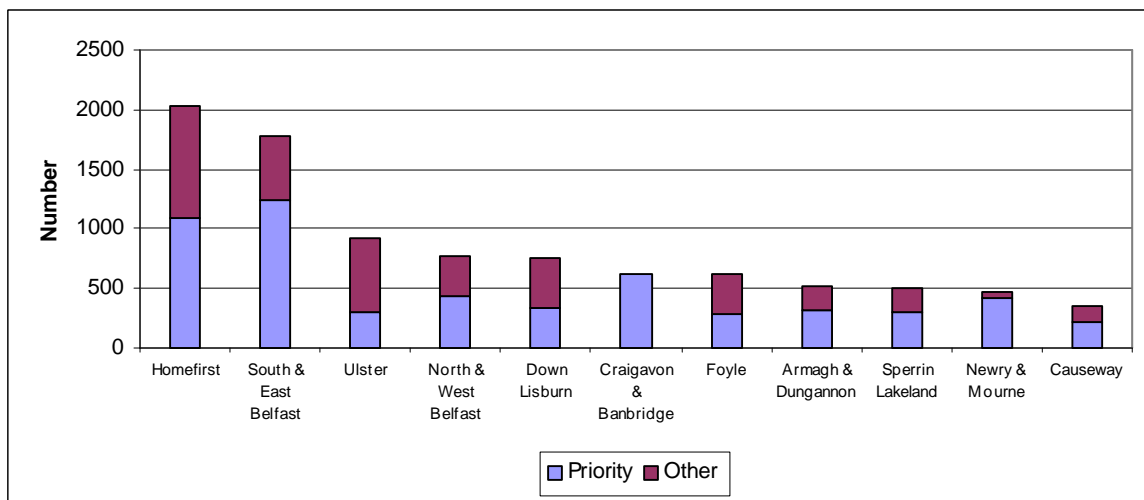
¹ Figures have been revised from those previously published

Source: CP4

Number of Assessments Commenced, by Trust

An analysis for the latest quarter of assessments commenced, in respect of whether they were priority cases or other cases, according to Trust, is shown in Figure C.13.

Figure C.13 Assessments Commenced, by Trust, Quarter Ending June 2003



Source: CP4

Table C.8 shows, for each Trust, the number of assessments commenced according to priority and other cases, and the number and percentage commenced within the Charter Standard of two weeks for priority cases and three months for other cases.

Table C.8 Assessments Commenced, by Trust, 30 June 2003

Trust	Priority Cases			Other Cases		
	Total Commenced	Number Commenced within 2 Weeks	Percentage Commenced within 2 Weeks	Total Commenced	Number Commenced within 3 Months	Percentage Commenced within 3 Months
Down Lisburn	342	228	67%	419	169	40%
North & West Belfast	435	200	46%	337	92	27%
South & East Belfast	1,240	930	75%	532	532	100%
Ulster	308	259	84%	616	543	88%
Causeway	222	83	37%	132	59	45%
Homefirst	1,097	542	49%	939	629	67%
Armagh & Dungannon	321	274	85%	205	133	65%
Craigavon & Banbridge	617	358	58%	0	0	-
Newry & Mourne	423	423	100%	40	0	0%
Foyle	284	76	27%	331	101	31%
Sperrin Lakeland	305	89	29%	197	43	22%
Northern Ireland	5,594	3,462	62%	3,748	2,301	61%

Source: CP4

Yearly Figures

Number of Assessments Commenced

Table C.9 provides an analysis of the total number of assessments commenced, and assessments commenced in respect of priority and other cases, for the year ending June 2003, including a comparison with the previous year.

Table C.9 Assessments Commenced, by Year

	Year Ending:		Change
	Jun 03	Jun 02	
Priority Cases	20,911	20,152	+759
Other Cases	15,125	15,258	-133
All Referrals	36,036	35,410	+626

Source: CP4

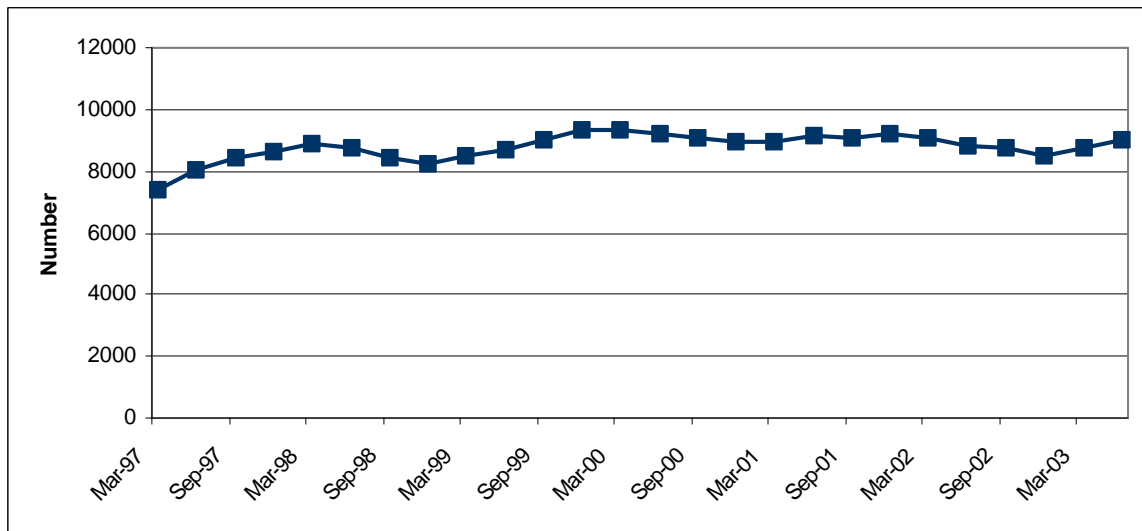
Trends

The trends described in this section are based on data which are averages of figures for four quarters. For example, the figure for June 2003 is based on the average of the figures for the four quarters ending June 2003.

Trends in Number of Assessments Commenced

Since 1997, there has been no overall trend in the number of assessments commenced (Figure C.14).

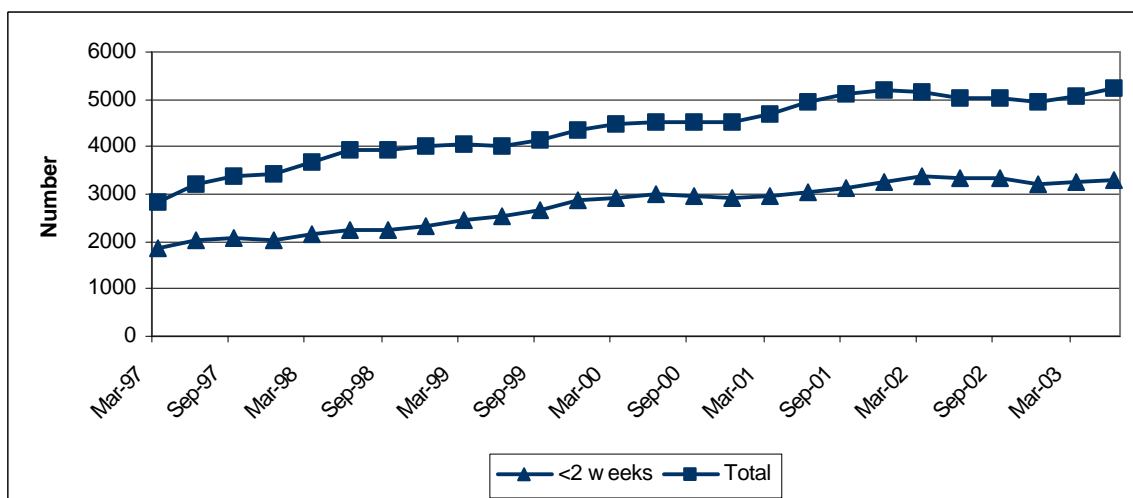
Figure C.14 Trends in Assessments Commenced



Source: CP4

Since 1997, there has been a general increase in the total number of assessments commenced in respect of priority cases and also in the total number of priority cases commenced within two weeks of referral (Figure C.15).

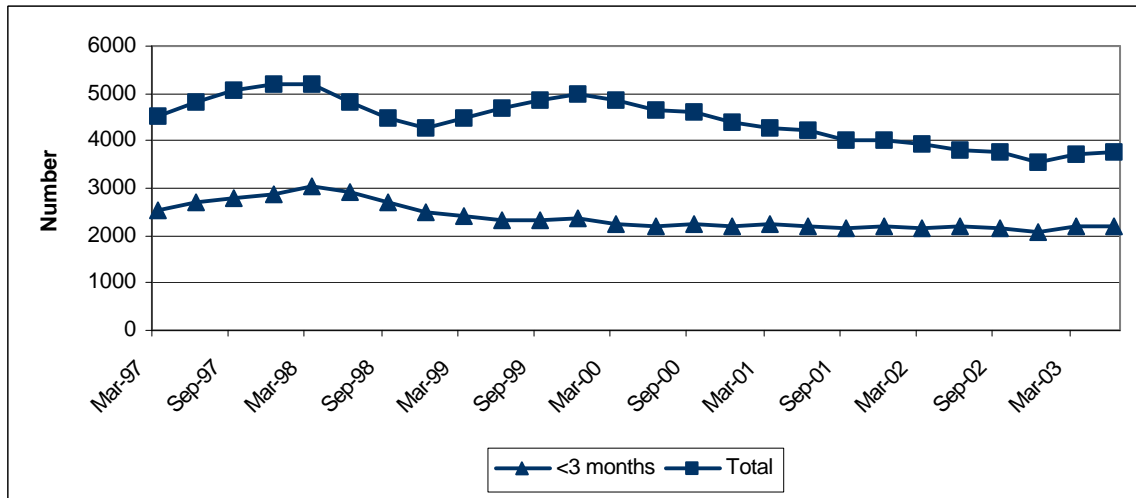
Figure C.15 Trends in Assessments Commenced in Respect of Priority Cases



Source: CP4

In recent years, there has been an overall decrease in the total number of assessments commenced in respect of other cases. Up to 2000, there was an overall decrease in the total number of other cases commenced within three months of referral, since when the figures have shown little change (Figure C.16).

Figure C.16 Trends in Assessments Commenced in Respect of Other Cases



Source: CP4