

## Part A: Persons Waiting for Assessment

### Quarterly Figures

#### Numbers of Persons Waiting for Assessment

Table A.1 provides an analysis of the number of persons waiting for assessment by community occupational therapists, according to whether these were priority cases or other cases. This table shows the figures for 30 June 2004, and includes comparisons with the position at the end of the previous quarter and the end of the corresponding quarter last year.

*Table A.1 Persons Waiting for Assessment, by Quarter*

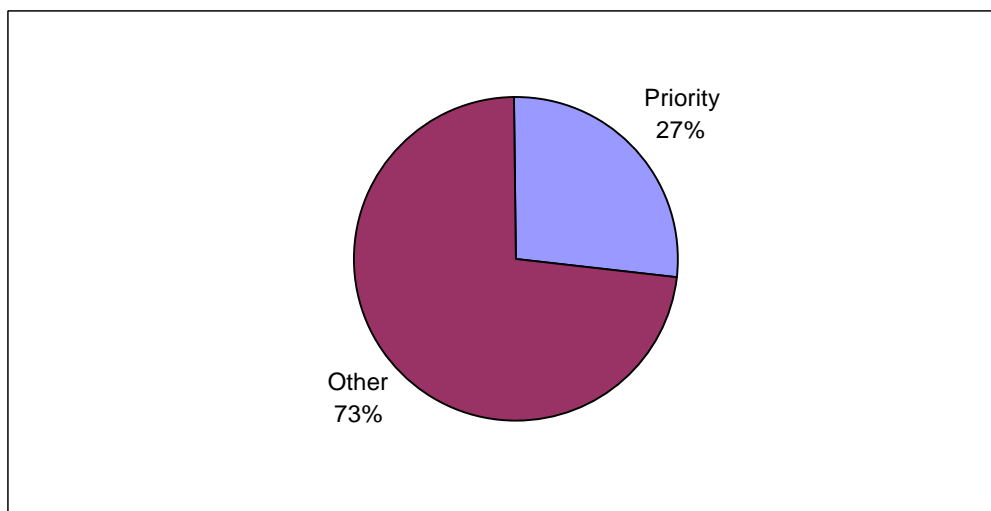
	Quarter Ending:			Quarterly Change	Annual Change
	June 04	March 04 <sup>1</sup>	June 03		
Priority Cases	2,858	2,365	1,968	+493	+890
Other Cases	7,707	6,911	6,282	+796	+1,425
All Persons Waiting	10,565	9,276	8,250	+1,289	+2,315

<sup>1</sup> Figures have been revised from those previously published

Source: CP4

Figure A.1 shows the percentages of priority and other cases waiting for assessment at the end of June 2004.

Figure A.1 Persons Waiting for Assessment, according to Priority and Other Cases

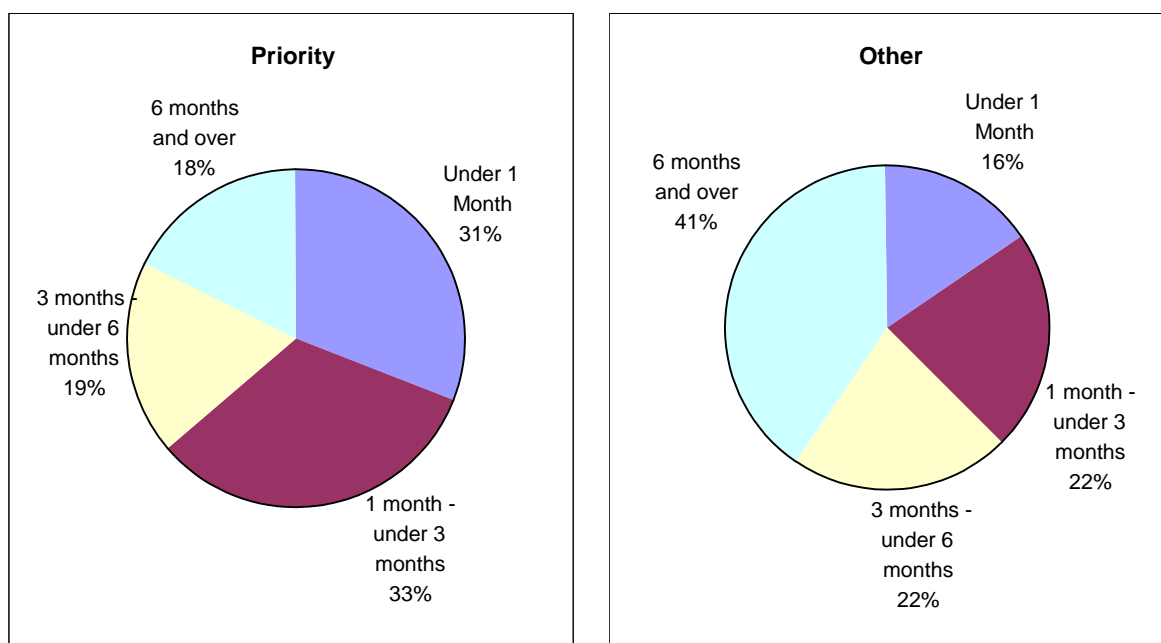


Source: CP4

## Number of Persons Waiting for Assessment, by Length of Time Waiting

Figure A.2 provides an analysis of persons waiting for assessment, according to length of time waiting, for the quarter ending June 2004. This is shown for priority and other cases.

Figure A.2 Persons Waiting for Assessment, by Time Waiting, Quarter Ending 30 June 2004



Source: CP4

Table A.2 shows the number of persons waiting for assessment, by length of time waiting, for the current quarter, previous quarter and corresponding quarter last year. This is shown for priority cases, other cases and all cases.

Table A.2 Persons Waiting for Assessment, by Time Waiting and Quarter

(a) Priority Cases

	Quarter Ending:			Quarterly Change	Annual Change
	June 04	March 04 <sup>1</sup>	June 03		
Under 1 month	888	819	724	+69	+164
1 month - under 3 months	933	719	641	+214	+292
3 months - under 6 months	530	411	355	+119	+175
6 months and over	507	416	248	+91	+259
All Priority Cases	2,858	2,365	1,968	+493	+890

<sup>1</sup> Figures have been revised from those previously published

Source: CP4

*(b) Other Cases*

	Quarter Ending:			Quarterly Change	Annual Change
	June 04	March 04 <sup>1</sup>	June 03		
Under 1 month	1,226	1,290	941	-64	+285
1 month - under 3 months	1,660	1,512	1,548	+148	+112
3 months - under 6 months	1,679	1,214	1,469	+65	+210
6 months and over	3,142	2,895	2,324	+247	+818
All Other Cases	7,707	6,911	6,282	+796	+1,425

<sup>1</sup> Figures have been revised from those previously published

Source: CP4

*(c) All Cases*

	Quarter Ending:			Quarterly Change	Annual Change
	June 04	March 04 <sup>1</sup>	June 03		
Under 1 month	2,114	2,109	1,665	+5	+449
1 month - under 3 months	2,593	2,231	2,189	+362	+404
3 months - under 6 months	2,209	1,625	1,824	+584	+385
6 months and over	3,649	3,311	2,572	+338	+1,077
All Cases	10,565	9,276	8,250	+1,289	+2,315

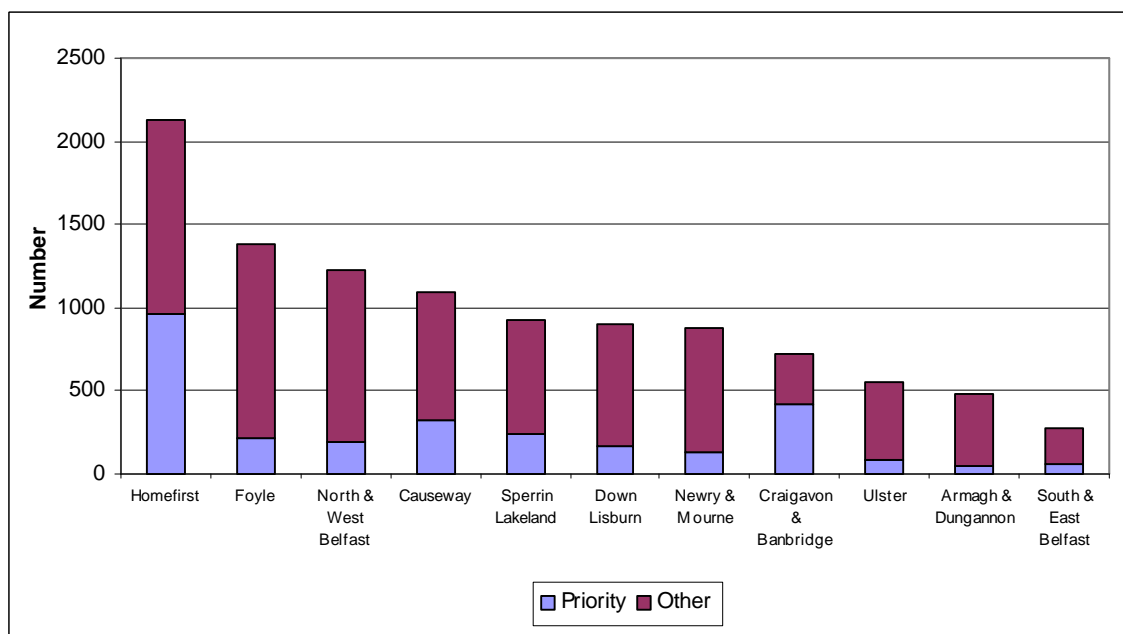
<sup>1</sup> Figures have been revised from those previously published

Source: CP4

## Number Waiting for Assessment, by Trust

An analysis for the latest quarter of the number of persons waiting for assessment by whether they were priority cases or other cases, according to Trust, is shown in Figure A.3.

Figure A.3 Persons Waiting for Assessment, by Trust, Quarter Ending June 2004



Source: CP4

Table A.3 shows, for each Trust, the number of persons waiting according to priority and other cases, and the number and percentage waiting for six months or more.

Table A.3 Persons Waiting for Assessment, by Trust, 30 June 2004

Trust	Priority Cases			Other Cases		
	Total Waiting	Number Waiting 6 Months or More	Percentage Waiting 6 Months or More	Total Waiting	Number Waiting 6 Months or More	Percentage Waiting 6 Months or More
Down Lisburn	163	62	38%	734	177	24%
North & West Belfast	190	6	3%	1,041	445	43%
South & East Belfast	56	0	0%	217	0	0%
Ulster	88	0	0%	469	2	0%
Causeway	330	81	25%	766	432	56%
Homefirst	967	290	30%	1,164	439	38%
Armagh & Dungannon	53	0	0%	422	143	34%
Craigavon & Banbridge	425	0	0%	298	298	100%
Newry & Mourne	134	0	0%	740	263	36%
Foyle	216	65	30%	1,172	596	51%
Sperrin Lakeland	236	3	1%	684	347	51%
<b>Northern Ireland</b>	<b>2,858</b>	<b>507</b>	<b>18%</b>	<b>7,707</b>	<b>3,142</b>	<b>41%</b>

Source: CP4

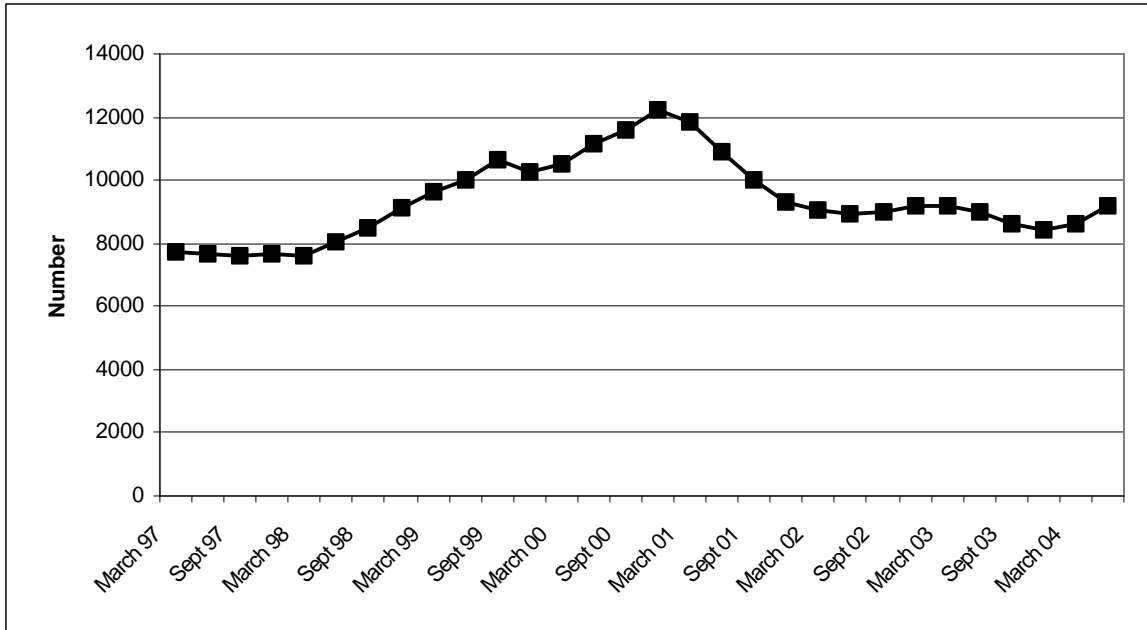
## Trends

The trends described in this section are based on data which are averages of figures for four quarters. For example, the figure for June 2004 is based on the average of the figures for the four quarters ending June 2004.

### **Trends in Number of Persons Waiting for Assessment**

There has been an overall decrease since 2000 in the number of all persons waiting for assessment, although there has been an increase in recent quarters. (Figure A.4).

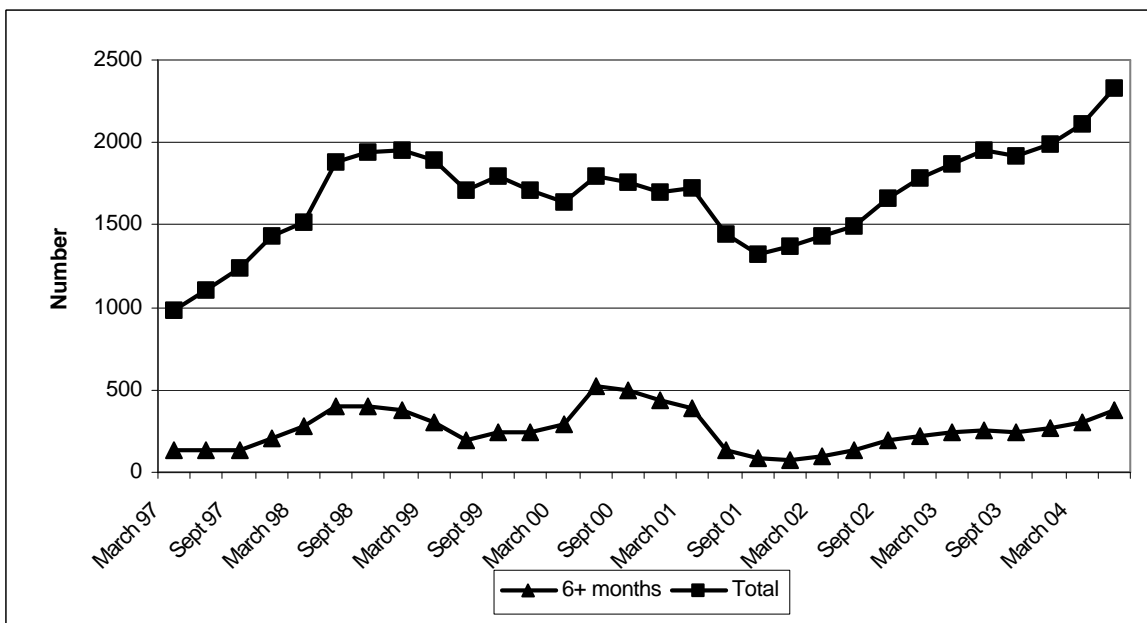
*Figure A.4 Trends in Persons Waiting for Assessment*



Source: CP4

Since 2001, there has been an increase in the total number of priority cases waiting for assessment, and in the number of priority cases waiting for six months or more (Figure A.5).

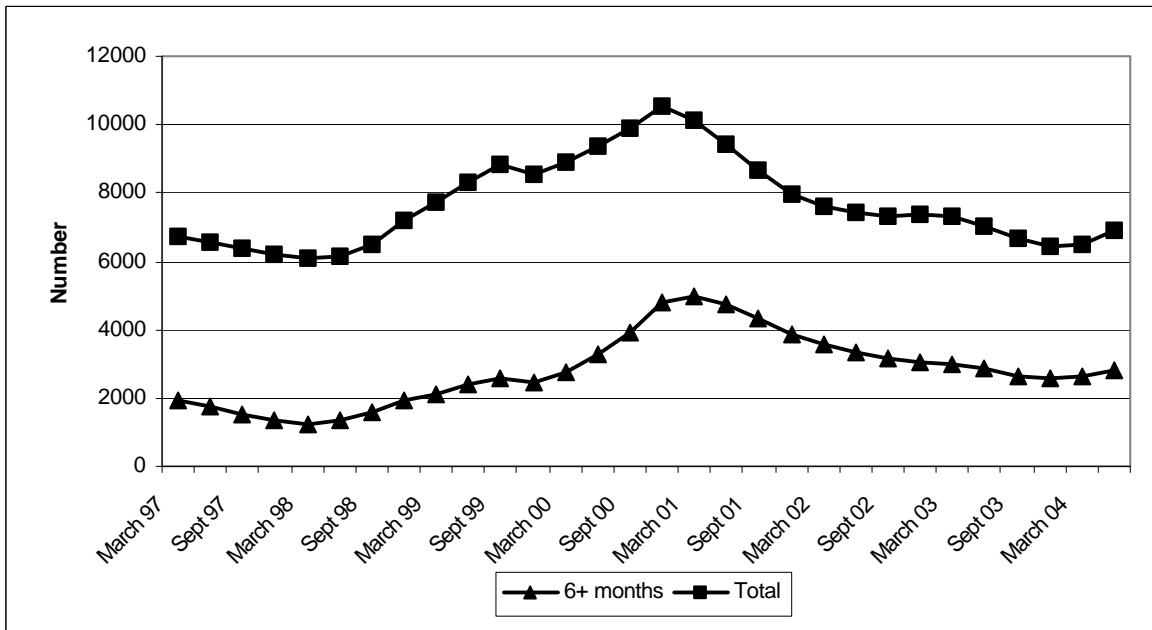
*Figure A.5 Trends in Priority Cases Waiting for Assessment*



Source: CP4

There has been an overall decrease since 2000 in the total number of other cases waiting for assessment and also in the total number of other cases waiting for six months or more (Figure A.6).

Figure A.6 Trends in Other Cases Waiting for Assessment



Source: CP4

## Part B: Referrals

### Quarterly Figures

#### Number of Referrals for Assessment

An analysis of the number of referrals for assessment by community occupational therapists, according to whether these were in respect of priority cases or other cases, for the quarter ending June 2004, is shown in Table B.4. This table includes comparisons with the previous quarter and the corresponding quarter last year.

*Table B.4 Referrals, by Quarter*

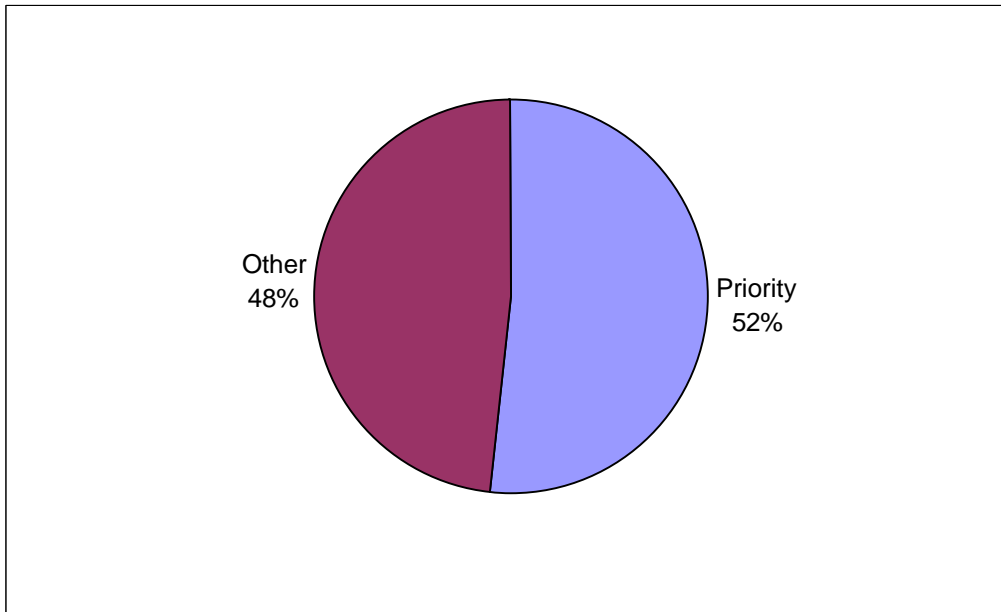
	Quarter Ending:			Quarterly Change	Annual Change
	June 04	March 04 <sup>1</sup>	June 03		
Priority Cases	6,083	6,076	6,085	+7	-2
Other Cases	5,704	6,219	5,358	-515	+346
All Referrals	11,787	12,295	11,443	-508	+344

<sup>1</sup> Figures have been revised from those previously published

Source: CP4

Figure B.7 shows the percentages of referrals which were priority and other cases at the end of June 2004.

*Figure B.7 Referrals, according to Priority and Other Cases*

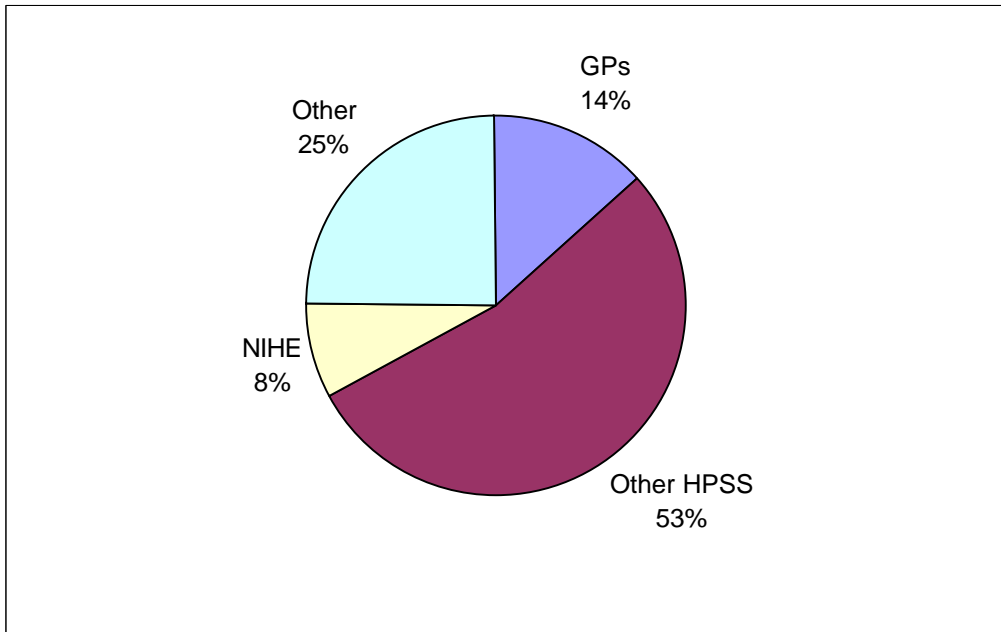


Source: CP4

## Number of Referrals, by Source of Referral

Figure B.8 provides an analysis of referrals according to source, for the latest quarter.

*Figure B.8 Referrals, by Source, Quarter Ending June 2004*

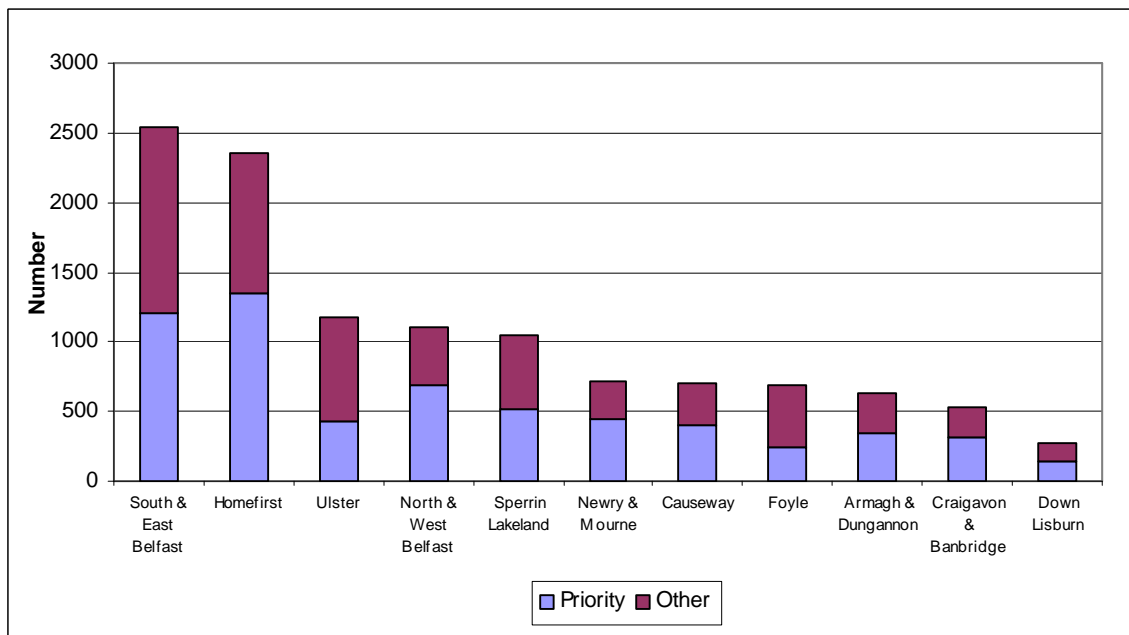


Source: CP4

## Number of Referrals, by Trust

An analysis for the latest quarter of referrals by whether they were priority cases or other cases, according to Trust, is shown in Figure B.9.

*Figure B.9 Referrals, by Trust, Quarter Ending June 2004*



Source: CP4

## Yearly Figures

### Number of Referrals

Table B.5 provides an analysis of the total number of referrals, and referrals in respect of priority and other cases, for the year ending June 2004, including a comparison with the previous year.

*Table B.5 Referrals, by Year*

	Year Ending:		Change
	June 04	June 03	
Priority Cases	24,218	23,289	+929
Other Cases	22,126	22,155	-29
All Referrals	46,344	45,444	+900

Source: CP4

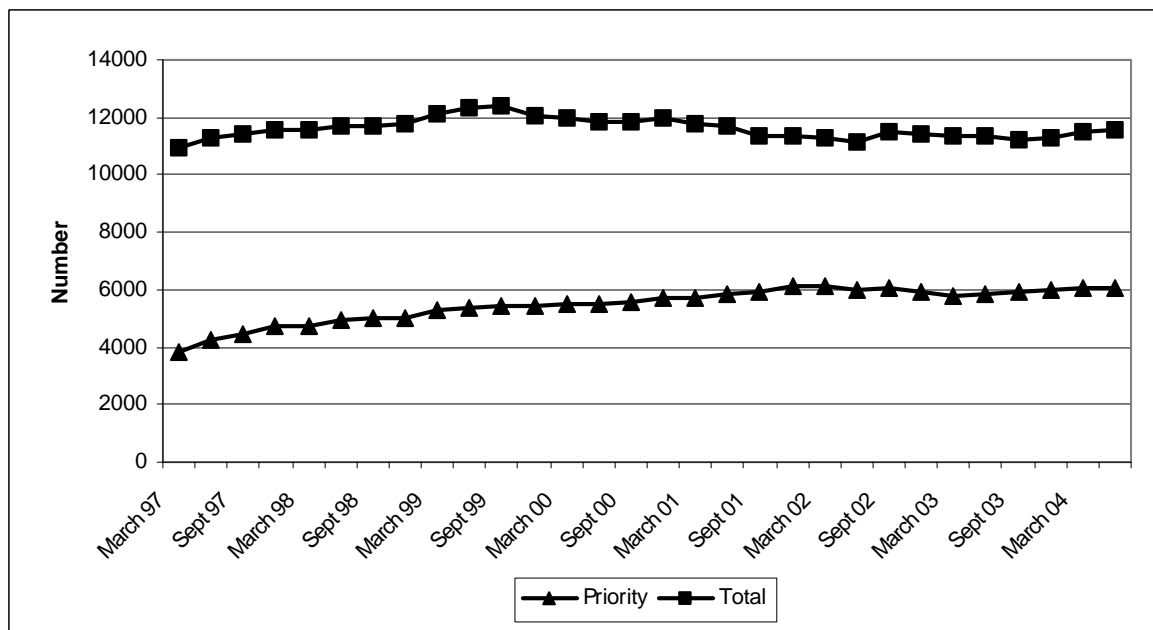
## Trends

The trends described in this section are based on data which are averages of figures for four quarters. For example, the figure for June 2004 is based on the average of the figures for the four quarters ending June 2004.

### Trends in Referrals

In recent months, there has been little change in the number of referrals in respect of priority cases, but there has been a slight downward trend in the total number of referrals since 1999 (Figure B.10).

*Figure B.10 Trends in Referrals*



Source: CP4

## Part C: Assessments Commenced

### Quarterly Figures

#### Numbers of Assessments Commenced

Table C.6 provides an analysis of the number of assessments commenced by community occupational therapists, according to whether these were in respect of priority cases or other cases. This table shows the figures for 30 June 2004, and includes comparisons with the position at the end of the previous quarter and the end of the corresponding quarter last year.

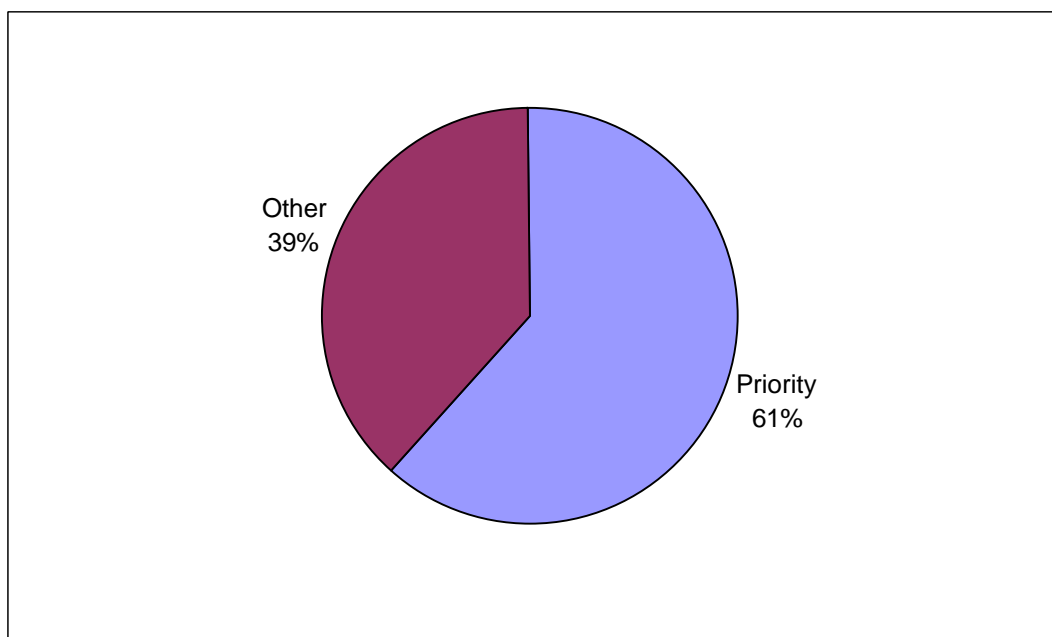
*Table C.6 Assessments Commenced, by Quarter*

	Quarter Ending:			Quarterly Change	Annual Change
	June 04	March 04	June 03		
Priority Cases	5,610	5,074	5,594	+536	+16
Other Cases	3,543	4,110	3,748	-567	-205
All Assessments Commenced	9,153	9,184	9,342	-31	-189

Source: CP4

Figure C.11 shows the percentages of assessments commenced which were priority and other cases at the end of June 2004.

*Figure C.11 Assessments Commenced, according to Priority and Other Cases*

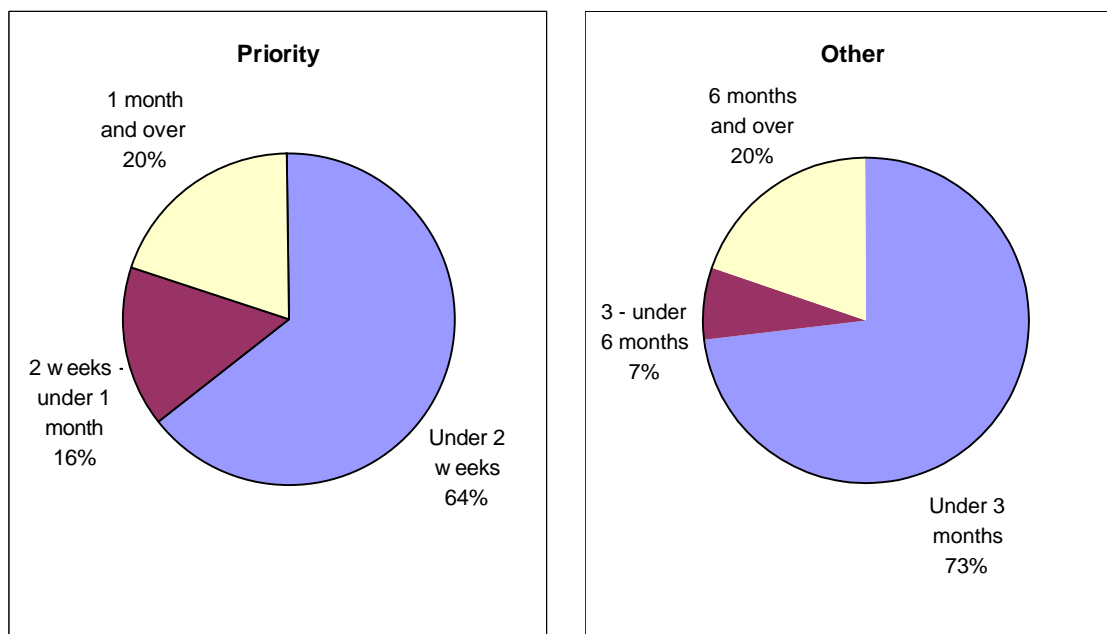


Source: CP4

## Number of Assessments Commenced, by Length of Time from Referral

Figure C.12 provides an analysis of assessments commenced, according to length of time between referral and start of assessment, for the quarter ending June 2004. This is shown for priority and other cases.

Figure C.12 Assessments Commenced, by Time from Referral, Quarter Ending 30 June 2004



Source: CP4

Table C.7 shows the number of assessments commenced, by length of time from referral, for the current quarter, previous quarter and corresponding quarter last year. This is shown for priority cases and other cases.

Table C.7 Assessments Commenced, by Time from Referral and Quarter Ending 30 June 2004

### (a) Priority Cases

	Quarter Ending:			Quarterly Change	Annual Change
	June 04	March 04	June 03		
Under 2 weeks	3,601	3,279	3,462	+322	+139
2 weeks - under 1 month	888	785	890	+103	-2
1 month and over	1,121	1,010	1,242	+111	-121
All Priority Cases	5,610	5,074	5,594	+536	+16

Source: CP4

(b) Other Cases

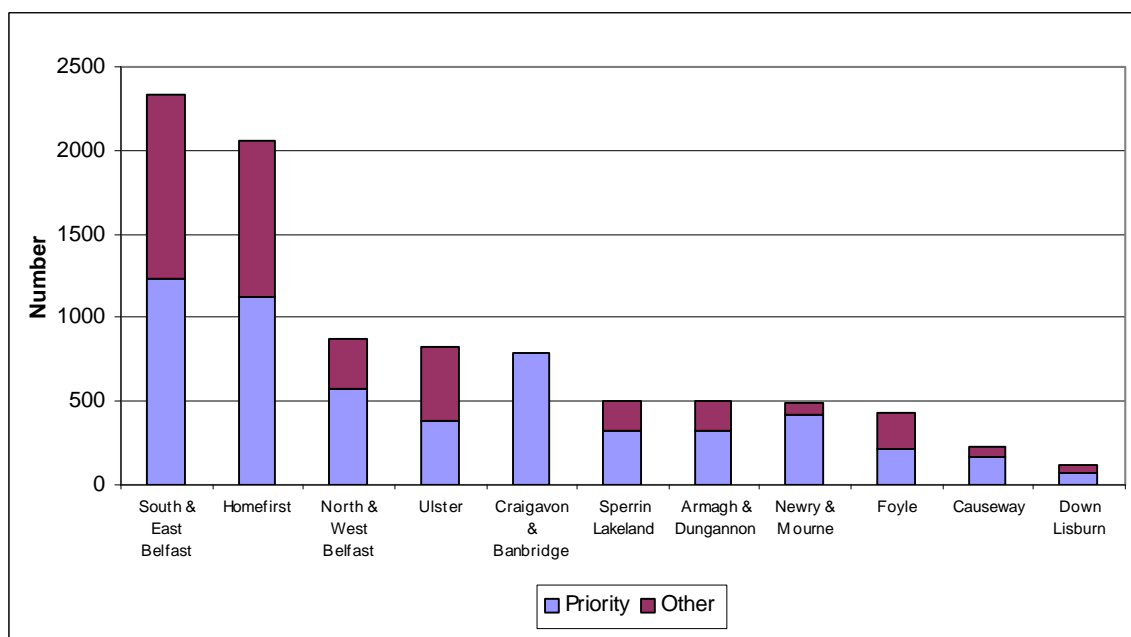
	Quarter Ending:			Quarterly Change	Annual Change
	June 04	March 04	June 03		
Under 3 months	2,586	2,894	2,301	-308	+285
3 months - under 6 months	263	384	517	-121	-254
6 months and over	694	832	930	-138	-236
All Other Cases	3,543	4,110	3,748	-567	-205

Source: CP4

**Number of Assessments Commenced, by Trust**

An analysis for the latest quarter of assessments commenced, in respect of whether they were priority cases or other cases, according to Trust, is shown in Figure C.13.

*Figure C.13 Assessments Commenced, by Trust, Quarter Ending June 2004*



Source: CP4

Table C.8 shows, for each Trust, the number of assessments commenced according to priority and other cases, and the number and percentage commenced within the Charter Standard of two weeks for priority cases and three months for other cases.

*Table C.8 Assessments Commenced, by Trust, 30 June 2004*

Trust	Priority Cases			Other Cases		
	Total Commenced	Number Commenced within 2 Weeks	Percentage Commenced within 2 Weeks	Total Commenced	Number Commenced within 3 Months	Percentage Commenced within 3 Months
Down Lisburn	73	59	81%	43	33	77%
North & West Belfast	578	334	58%	297	98	33%
South & East Belfast	1,228	926	75%	1,107	1,072	97%
Ulster	377	309	82%	447	423	95%
Causeway	167	87	52%	64	19	30%
Homefirst	1,127	605	54%	932	696	75%
Armagh & Dungannon	320	231	72%	179	78	44%
Craigavon & Banbridge	784	455	58%	0	0	-
Newry & Mourne	417	417	100%	76	26	34%
Foyle	216	94	44%	213	109	51%
Sperrin Lakeland	323	84	26%	185	32	17%
<b>Northern Ireland</b>	<b>5,610</b>	<b>3,601</b>	<b>64%</b>	<b>3,543</b>	<b>2,586</b>	<b>73%</b>

Source: CP4

## Yearly Figures

### Number of Assessments Commenced

Table C.9 provides an analysis of the total number of assessments commenced, and assessments commenced in respect of priority and other cases, for the year ending June 2004, including a comparison with the previous year.

*Table C.9 Assessments Commenced, by Year*

	Year Ending:		Change
	June 04	June 03	
Priority Cases	22,296	20,911	+1,385
Other Cases	14,819	15,125	-306
All Assessments Commenced	37,115	36,036	+1,079

Source: CP4

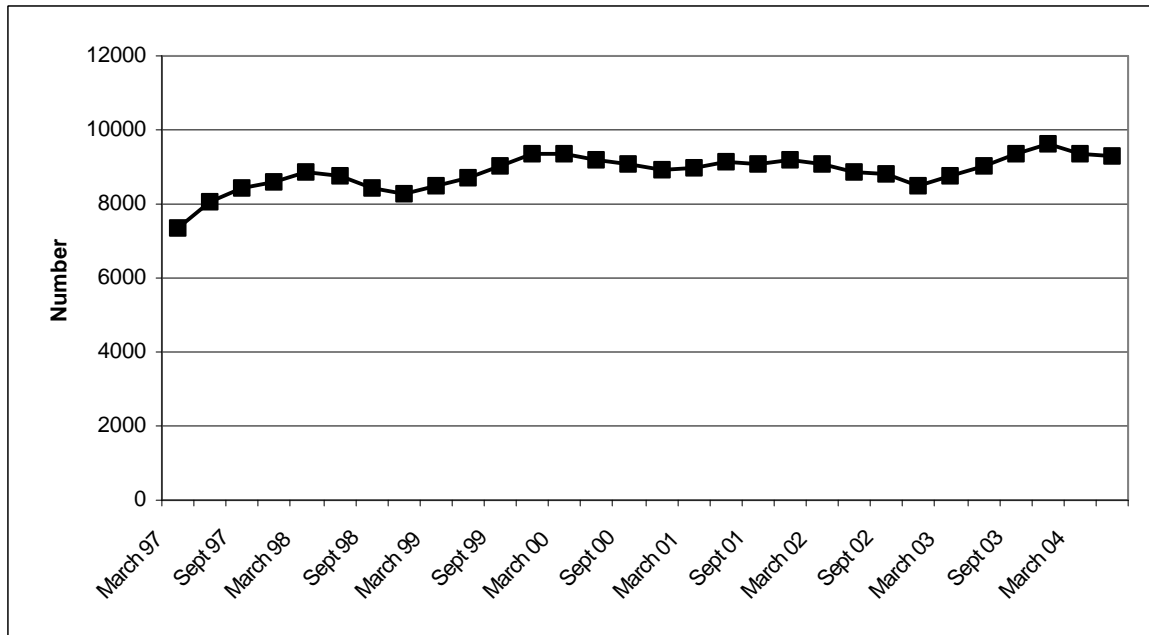
## Trends

The trends described in this section are based on data which are averages of figures for four quarters. For example, the figure for June 2004 is based on the average of the figures for the four quarters ending June 2004.

### **Trends in Number of Assessments Commenced**

Since 1997, there has been no overall trend in the number of assessments commenced (Figure C.14).

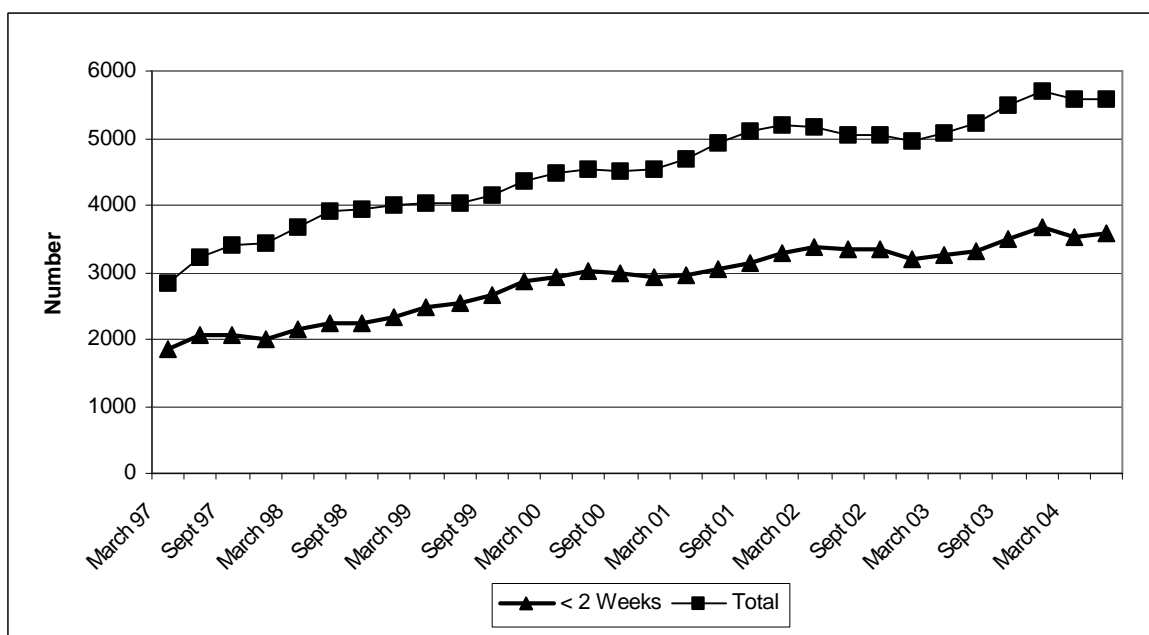
*Figure C.14 Trends in Assessments Commenced*



Source: CP4

Since 1997, there has been a general increase in the total number of assessments commenced in respect of priority cases and also in the total number of priority cases commenced within two weeks of referral (Figure C.15).

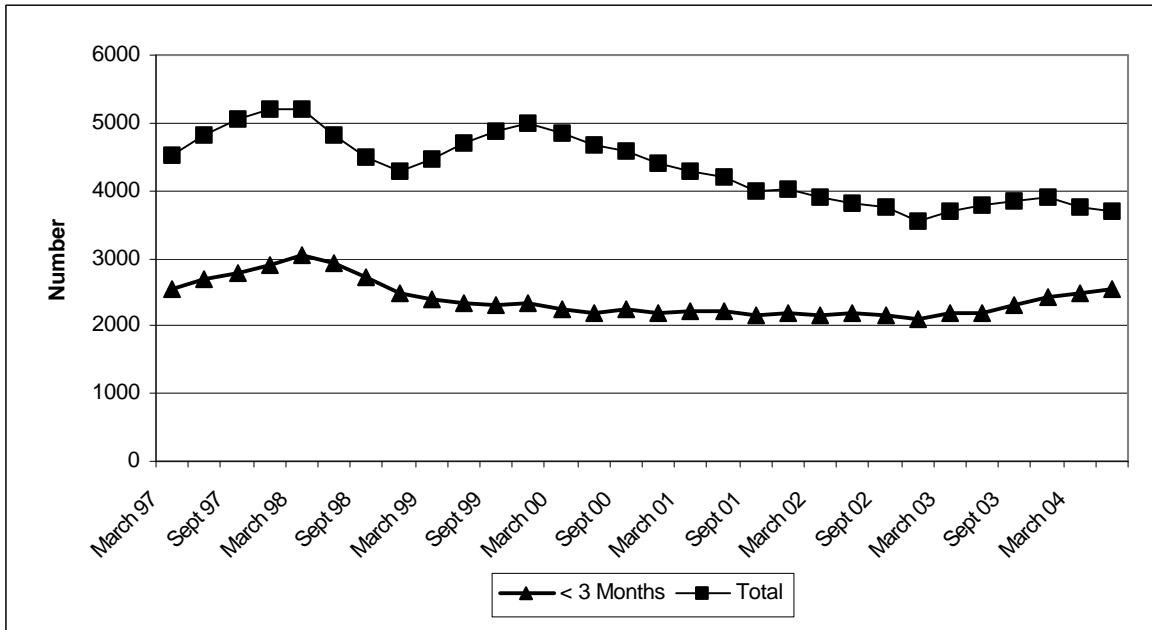
*Figure C.15 Trends in Assessments Commenced in Respect of Priority Cases*



Source: CP4

In recent years, there has been an overall decrease in the total number of assessments commenced in respect of other cases. Up to 2002, there was an overall decrease in the total number of other cases commenced within three months of referral, since when the figures have shown a slight increase (Figure C.16).

Figure C.16 Trends in Assessments Commenced in Respect of Other Cases



Source: CP4