

Part A: Persons Waiting for Assessment

Quarterly Figures

Numbers of Persons Waiting for Assessment

Table A.1 provides an analysis of the number of persons waiting for assessment by community occupational therapists, according to whether these were priority cases or other cases. This table shows the figures for 31 March 2004, and includes comparisons with the position at the end of the previous quarter and the end of the corresponding quarter last year.

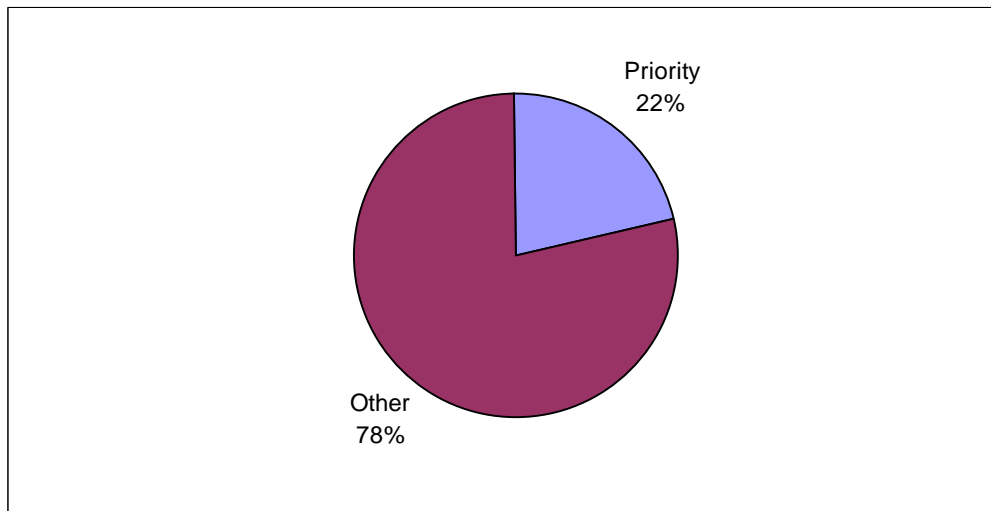
Table A.1 Persons Waiting for Assessment, by Quarter

	Quarter Ending:			Quarterly Change	Annual Change
	March 04	Dec 03	March 03		
Priority Cases	2,002	2,219	1,881	-217	+121
Other Cases	7,266	6,517	6,604	+749	+662
All Persons Waiting	9,268	8,736	8,485	+532	+783

Source: CP4

Figure A.1 shows the percentages of priority and other cases waiting for assessment at the end of March 2004.

Figure A.1 Persons Waiting for Assessment, according to Priority and Other Cases

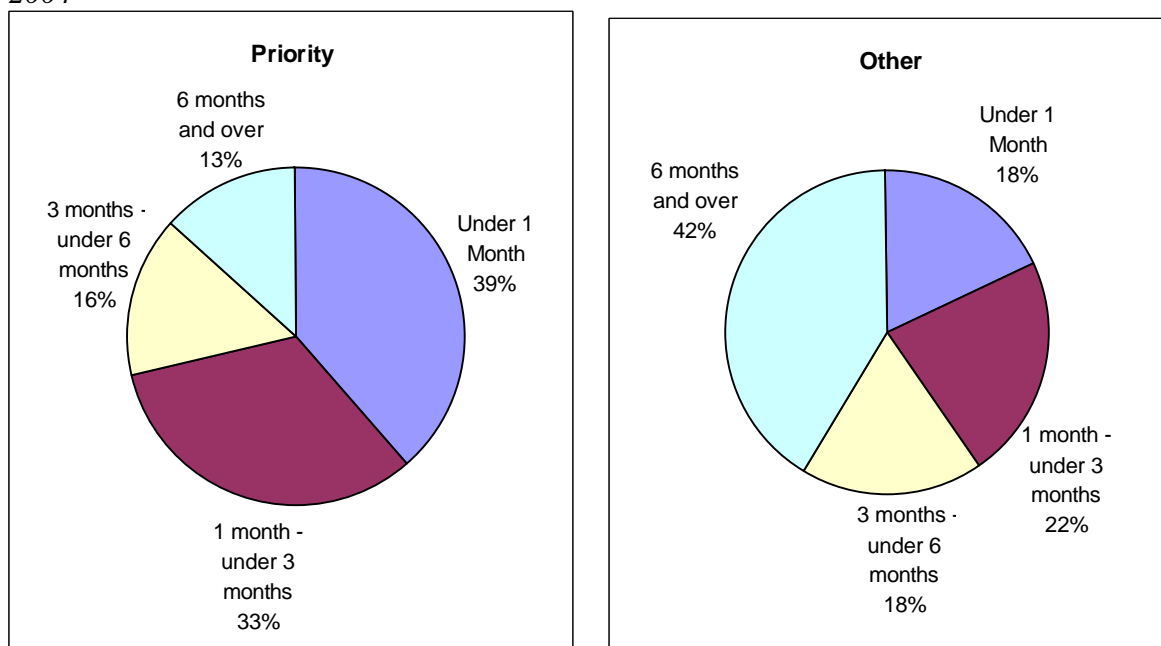


Source: CP4

Number of Persons Waiting for Assessment, by Length of Time Waiting

Figure A.2 provides an analysis of persons waiting for assessment, according to length of time waiting, for the quarter ending March 2004. This is shown for priority and other cases.

Figure A.2 Persons Waiting for Assessment, by Time Waiting, Quarter Ending 31 March 2004



Source: CP4

Table A.2 shows the number of persons waiting for assessment, by length of time waiting, for the current quarter, previous quarter and corresponding quarter last year. This is shown for priority cases, other cases and all cases.

Table A.2 Persons Waiting for Assessment, by Time Waiting and Quarter

(a) Priority Cases

	Quarter Ending:			Quarterly Change	Annual Change
	March 04	Dec 03	March 03		
Under 1 month	771	683	643	+88	+128
1 month - under 3 months	652	685	612	-33	+40
3 months - under 6 months	311	531	379	-220	-68
6 months and over	268	320	247	-52	+21
All Priority Cases	2,002	2,219	1,881	-217	+121

Source: CP4

(b) Other Cases

	Quarter Ending:			Quarterly Change	Annual Change
	March 04	Dec 03	March 03		
Under 1 month	1,338	942	1,051	+396	+287
1 month - under 3 months	1,579	1,377	1,493	+202	+86
3 months - under 6 months	1,314	1,365	1,341	-51	-27
6 months and over	3,035	2,833	2,719	+202	+316
All Other Cases	7,266	6,517	6,604	+749	+662

Source: CP4

(c) All Cases

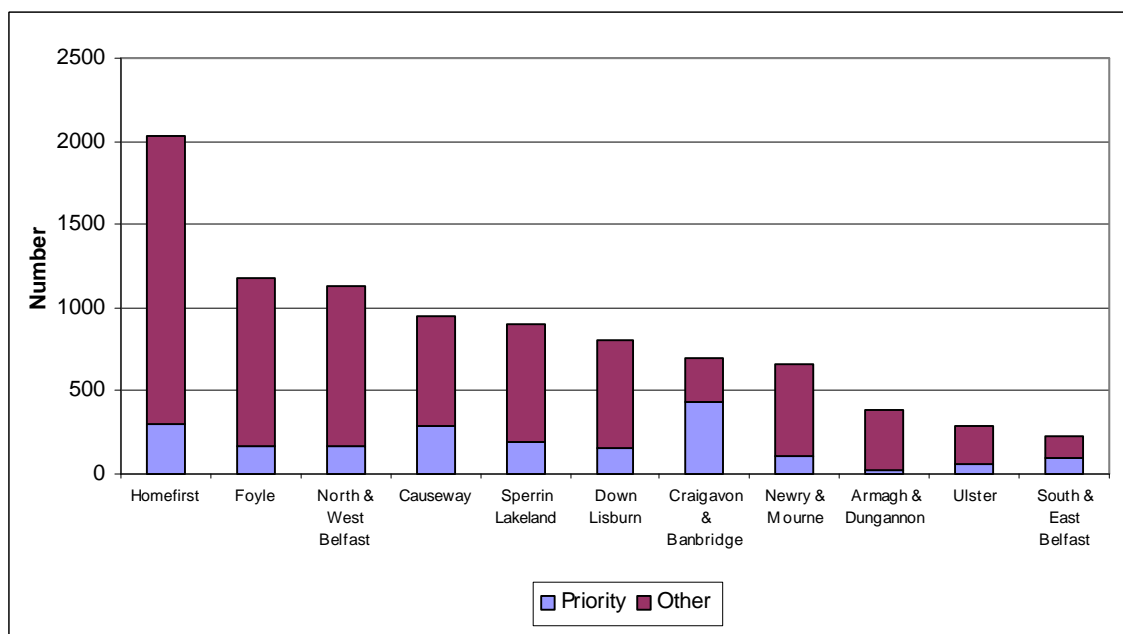
	Quarter Ending:			Quarterly Change	Annual Change
	March 04	Dec 03	March 03		
Under 1 month	2,109	1,625	1,694	+484	+415
1 month - under 3 months	2,231	2,062	2,105	+169	+126
3 months - under 6 months	1,625	1,896	1,720	-271	-95
6 months and over	3,303	3,153	2,966	+150	+337
All Cases	9,268	8,736	8,485	+532	+783

Source: CP4

Number Waiting for Assessment, by Trust

An analysis for the latest quarter of the number of persons waiting for assessment by whether they were priority cases or other cases, according to Trust, is shown in Figure A.3.

Figure A.3 Persons Waiting for Assessment, by Trust, Quarter Ending March 2004



Source: CP4

Table A.3 shows, for each Trust, the number of persons waiting according to priority and other cases, and the number and percentage waiting for six months or more.

Table A.3 Persons Waiting for Assessment, by Trust, 31 March 2004

Trust	Priority Cases			Other Cases		
	Total Waiting	Number Waiting 6 months or More	Percentage Waiting 6 Months or More	Total Waiting	Number Waiting 6 months or More	Percentage Waiting 6 Months or More
Down Lisburn	151	55	36%	659	133	20%
North & West Belfast	169	0	0%	965	399	41%
South & East Belfast	92	1	1%	131	4	3%
Ulster	62	0	0%	229	0	0%
Causeway	290	105	36%	664	398	60%
Homefirst	303	70	23%	1,731	641	37%
Armagh & Dungannon	27	0	0%	359	137	38%
Craigavon & Banbridge	434	0	0%	258	258	100%
Newry & Mourne	112	0	0%	554	160	29%
Foyle	171	33	19%	1,007	500	50%
Sperrin Lakeland	191	4	2%	709	405	57%
Northern Ireland	2,002	268	13%	7,266	3,035	42%

Source: CP4

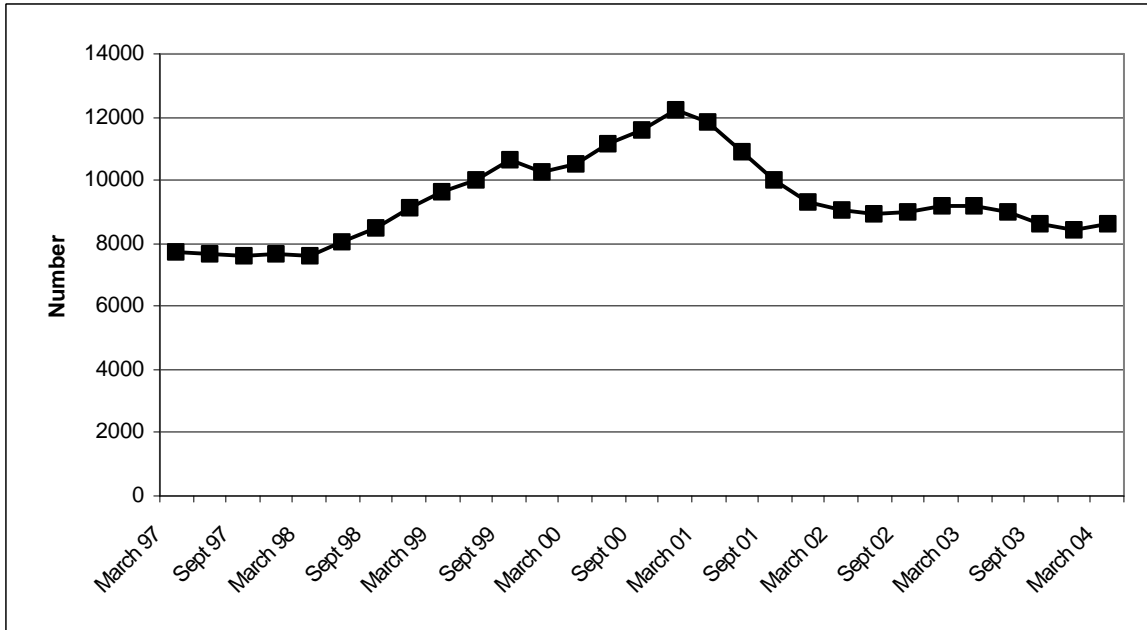
Trends

The trends described in this section are based on data which are averages of figures for four quarters. For example, the figure for March 2004 is based on the average of the figures for the four quarters ending March 2004.

Trends in Number of Persons Waiting for Assessment

There has been an overall decrease since 2000 in the number of all persons waiting for assessment (Figure A.4).

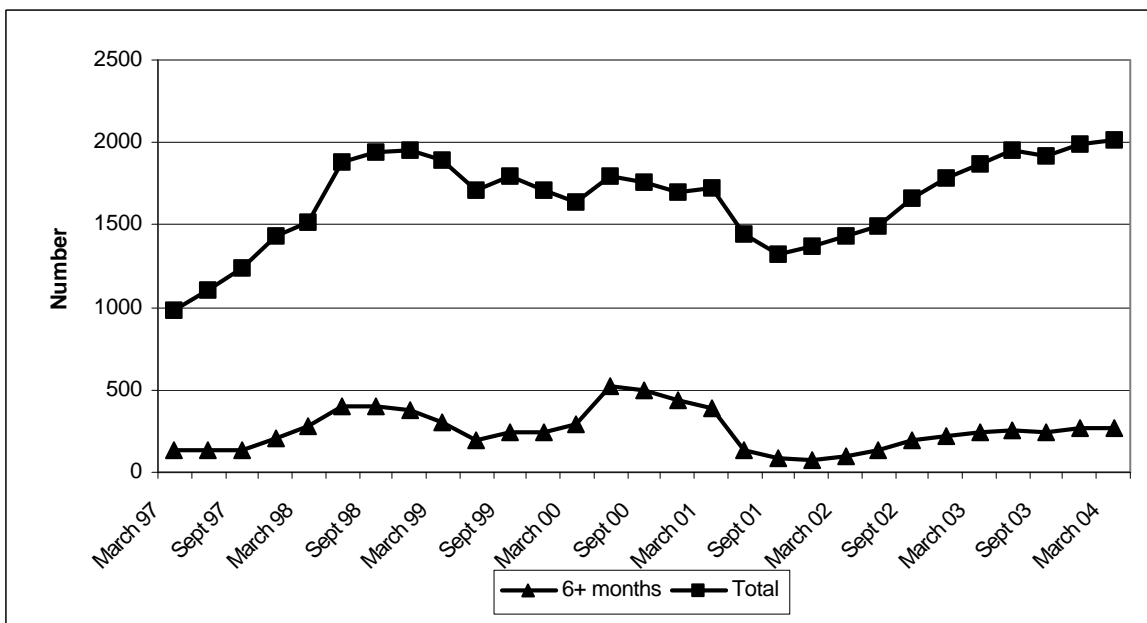
Figure A.4 Trends in Persons Waiting for Assessment



Source: CP4

In recent months, there has been an increase in the total number of priority cases waiting for assessment, and in the number of priority cases waiting for six months or more (Figure A.5).

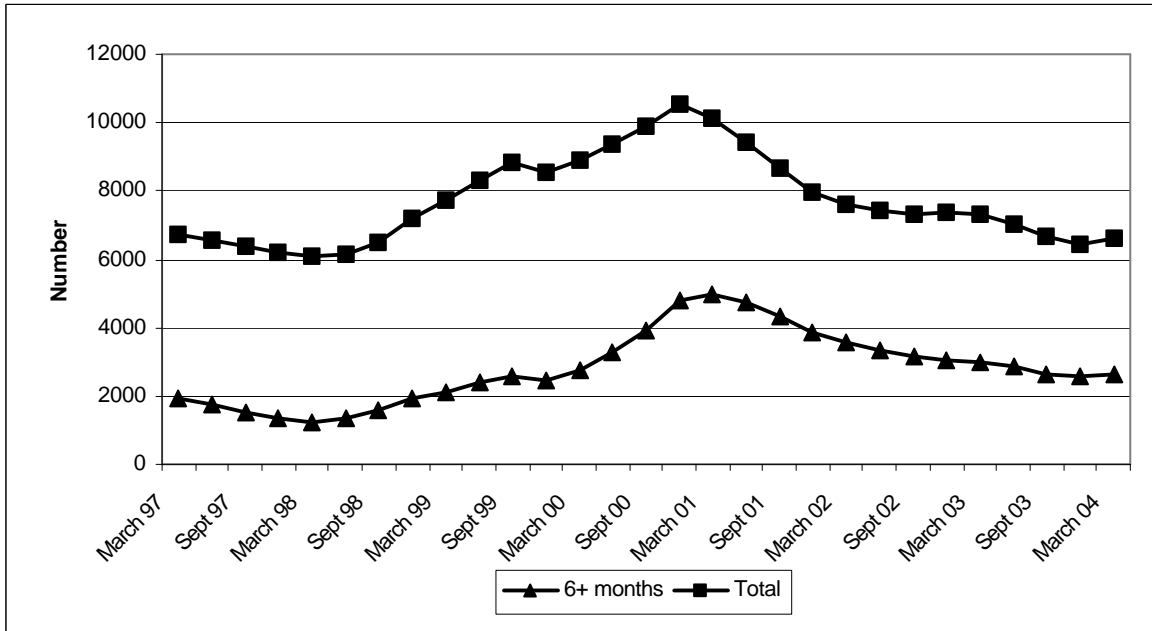
Figure A.5 Trends in Priority Cases Waiting for Assessment



Source: CP4

There has been an overall decrease since 2000 in the total number of other cases waiting for assessment and also in the total number of other cases waiting for six months or more (Figure A.6).

Figure A.6 Trends in Other Cases Waiting for Assessment



Source: CP4

Part B: Referrals

Quarterly Figures

Number of Referrals for Assessment

An analysis of the number of referrals for assessment by community occupational therapists, according to whether these were in respect of priority cases or other cases, for the quarter ending March 2004, is shown in Table B.4. This table includes comparisons with the previous quarter and the corresponding quarter last year.

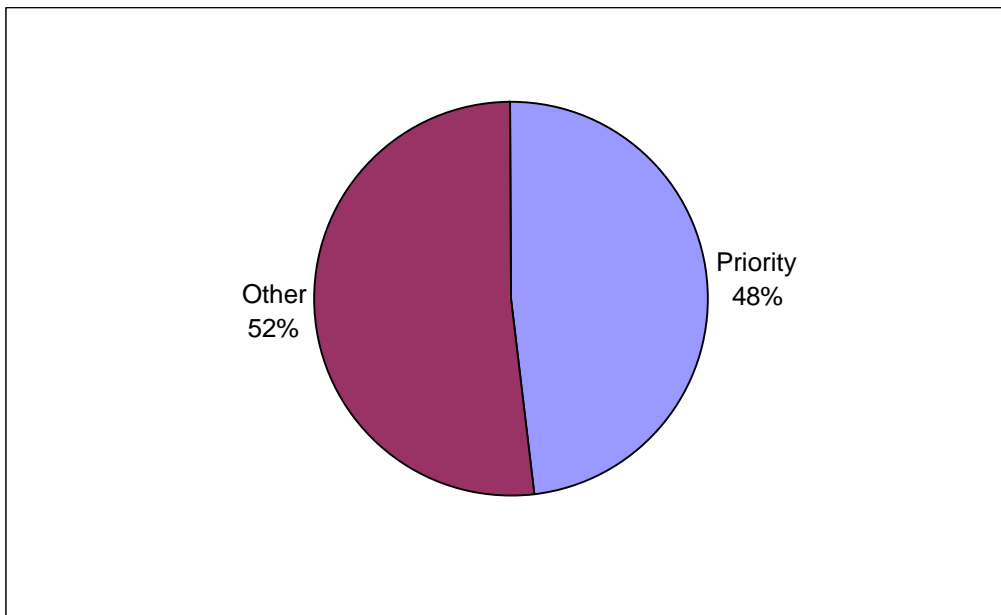
Table B.4 Referrals, by Quarter

	Quarter Ending:			Quarterly Change	Annual Change
	March 04	Dec 03	March 03		
Priority Cases	5,620	5,894	5,734	-274	-114
Other Cases	6,060	5,077	5,633	+983	+427
All Referrals	11,680	10,971	11,367	+709	+313

Source: CP4

Figure B.7 shows the percentages of referrals, which were priority and other cases at the end of March 2004.

Figure B.7 Referrals, according to Priority and Other Cases

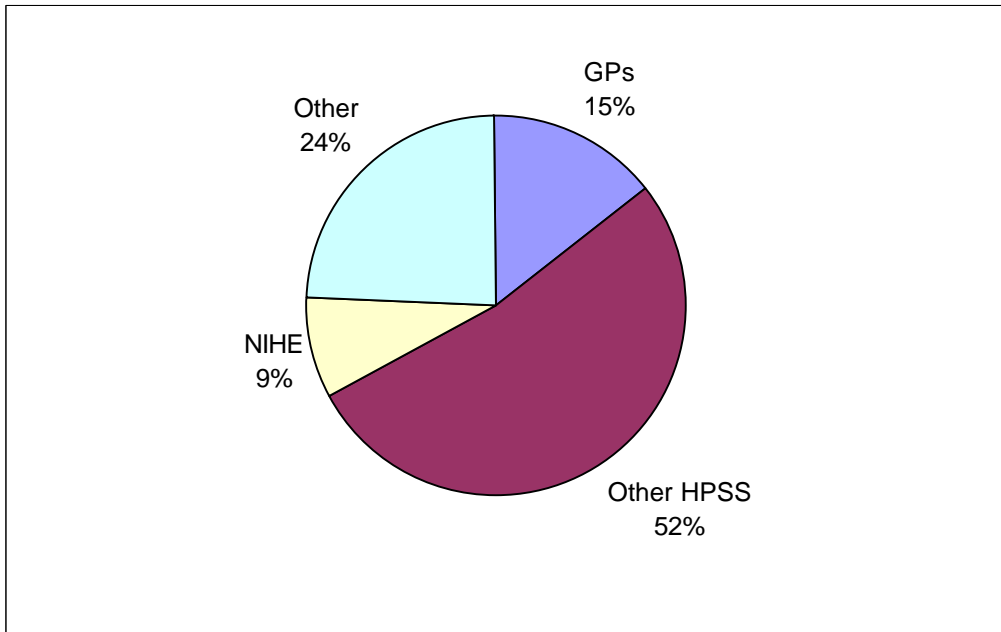


Source: CP4

Number of Referrals, by Source of Referral

Figure B.8 provides an analysis of referrals according to source, for the latest quarter.

Figure B.8 Referrals, by Source, Quarter Ending March 2004

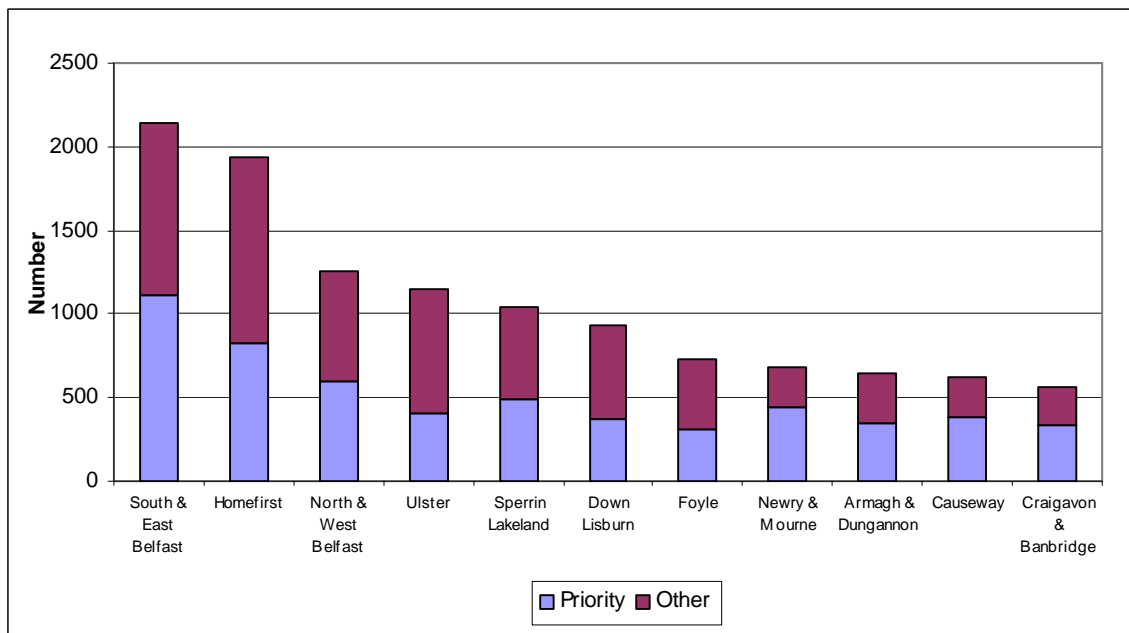


Source: CP4

Number of Referrals, by Trust

An analysis for the latest quarter of referrals by whether they were priority cases or other cases, according to Trust, is shown in Figure B.9.

Figure B.9 Referrals, by Trust, Quarter Ending March 2004



Source: CP4

Yearly Figures

Number of Referrals

Table B.5 provides an analysis of the total number of referrals, and referrals in respect of priority and other cases, for the year ending March 2004, including a comparison with the previous year.

Table B.5 Referrals, by Year

	Year Ending:		Change
	March 04	March 03	
Priority Cases	23,764	23,063	+701
Other Cases	21,621	22,340	-719
All Referrals	45,385	45,403	-18

Source: CP4

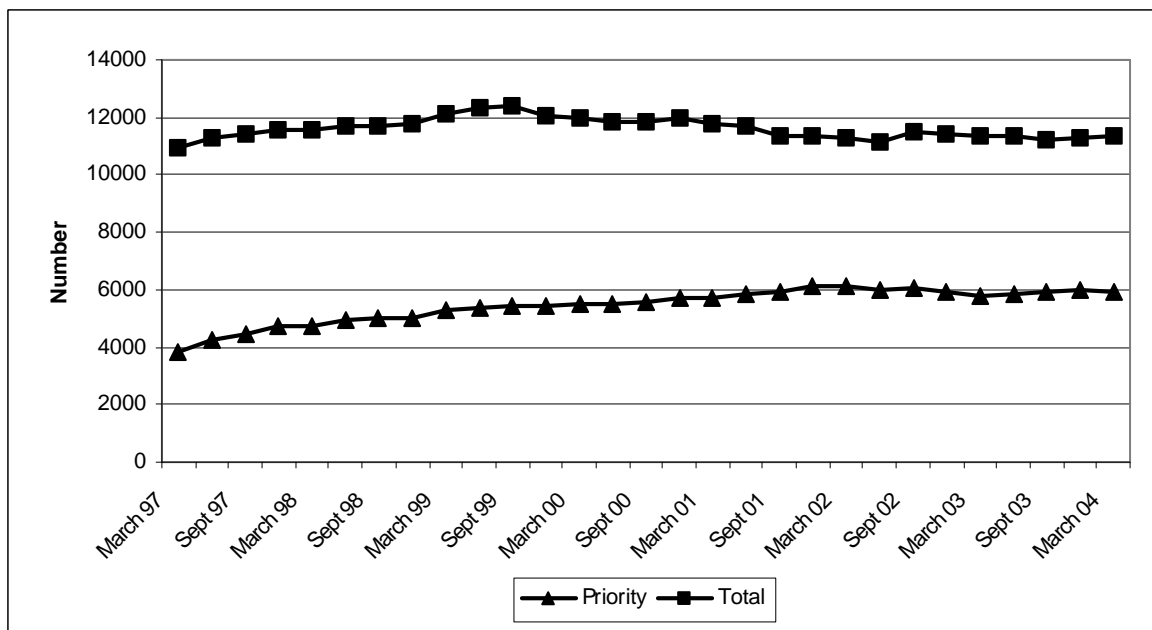
Trends

The trends described in this section are based on data which are averages of figures for four quarters. For example, the figure for March 2004 is based on the average of the figures for the four quarters ending March 2004.

Trends in Referrals

In recent months, there has been little change in the number of referrals in respect of priority cases, but there has been a slight downward trend in the total number of referrals since 1999 (Figure B.10).

Figure B.10 Trends in Referrals



Source: CP4

Part C: Assessments Commenced

Quarterly Figures

Numbers of Assessments Commenced

Table C.6 provides an analysis of the number of assessments commenced by community occupational therapists, according to whether these were in respect of priority cases or other cases. This table shows the figures for 31 March 2004, and includes comparisons with the position at the end of the previous quarter and the end of the corresponding quarter last year.

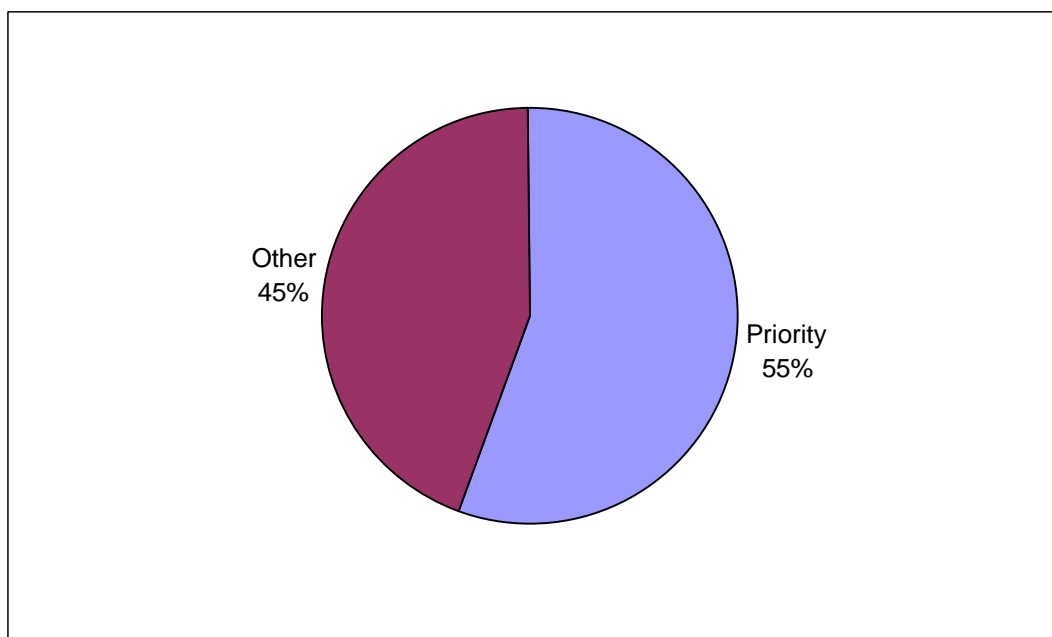
Table C.6 Assessments Commenced, by Quarter

	Quarter Ending:			Quarterly Change	Annual Change
	March 04	Dec 03	March 03		
Priority Cases	5,074	5,582	5,637	-508	-563
Other Cases	4,110	3,587	4,746	+523	-636
All Assessments Commenced	9,184	9,169	10,383	+15	-1,199

Source: CP4

Figure C.11 shows the percentages of assessments commenced which were priority and other cases at the end of March 2004.

Figure C.11 Assessments Commenced, according to Priority and Other Cases

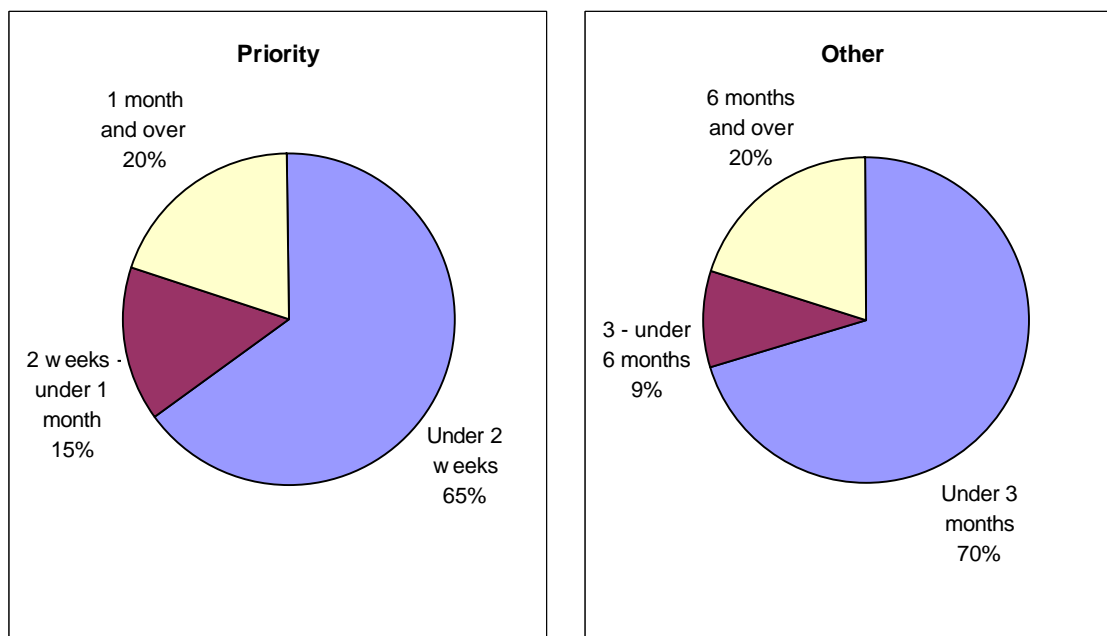


Source: CP4

Number of Assessments Commenced, by Length of Time from Referral

Figure C.12 provides an analysis of assessments commenced, according to length of time between referral and start of assessment, for the quarter ending March 2004. This is shown for priority and other cases.

Figure C.12 Assessments Commenced, by Time from Referral, Quarter Ending 31 March 2004



Source: CP4

Table C.7 shows the number of assessments commenced, by length of time from referral, for the current quarter, previous quarter and corresponding quarter last year. This is shown for priority cases and other cases.

Table C.7 Assessments Commenced, by Time from Referral and Quarter Ending 31 March 2004

(a) Priority Cases

	Quarter Ending:			Quarterly Change	Annual Change
	March 04	Dec 03	March 03		
Under 2 weeks	3,279	3,592	3,778	-313	-499
2 weeks - under 1 month	785	898	770	-113	+15
1 month and over	1,010	1,092	1,089	-82	-79
All Priority Cases	5,074	5,582	5,637	-508	-563

Source: CP4

(b) Other Cases

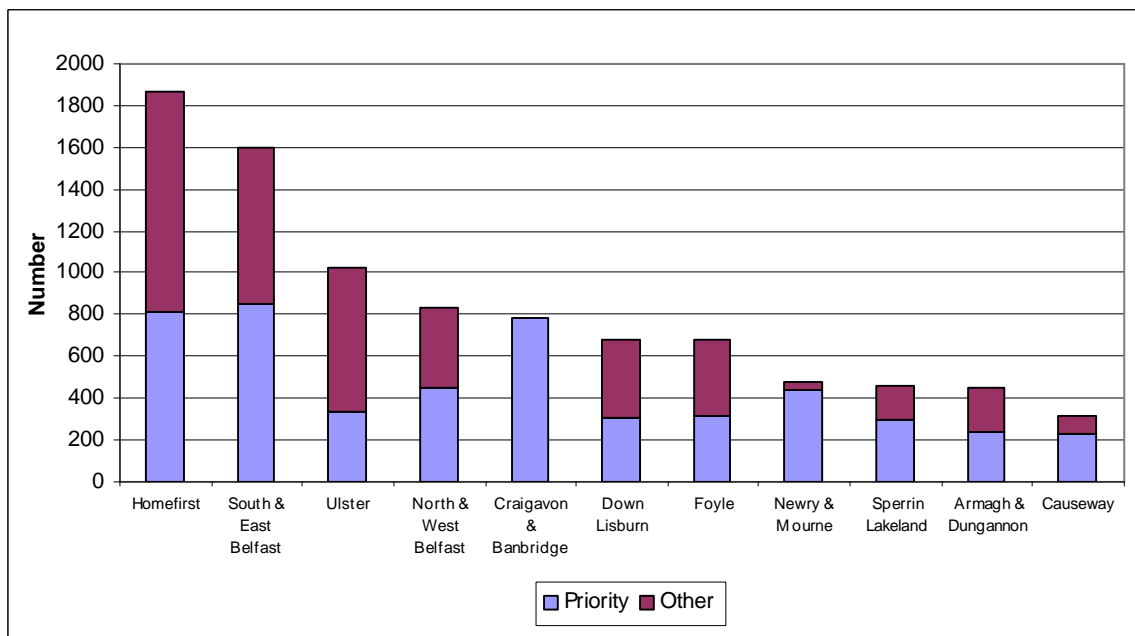
	Quarter Ending:			Quarterly Change	Annual Change
	March 04	Dec 03	March 03		
Under 3 months	2,894	2,352	2,680	+542	+214
3 months - under 6 months	384	492	691	-108	-307
6 months and over	832	743	1,375	+89	-543
All Other Cases	4,110	3,587	4,746	+523	-636

Source: CP4

Number of Assessments Commenced, by Trust

An analysis for the latest quarter of assessments commenced, in respect of whether they were priority cases or other cases, according to Trust, is shown in Figure C.13.

Figure C.13 Assessments Commenced, by Trust, Quarter Ending March 2004



Source: CP4

Table C.8 shows, for each Trust, the number of assessments commenced according to priority and other cases, and the number and percentage commenced within the Charter Standard of two weeks for priority cases and three months for other cases.

Table C.8 Assessments Commenced, by Trust, 31 March 2004

Trust	Priority Cases			Other Cases		
	Total Commenced	Number Commenced within 2 Weeks	Percentage Commenced within 2 Weeks	Total Commenced	Number Commenced within 3 Months	Percentage Commenced within 3 Months
Down Lisburn	311	257	83%	373	248	66%
North & West Belfast	452	229	51%	376	158	42%
South & East Belfast	848	661	78%	752	720	96%
Ulster	333	302	91%	692	657	95%
Causeway	234	91	39%	86	16	19%
Homefirst	811	465	57%	1,057	824	78%
Armagh & Dungannon	243	178	73%	204	57	28%
Craigavon & Banbridge	789	458	58%	0	0	-
Newry & Mourne	443	443	100%	39	26	67%
Foyle	315	104	33%	362	130	36%
Sperrin Lakeland	295	91	31%	169	58	34%
Northern Ireland	5,074	3,279	65%	4,110	2,894	70%

Source: CP4

Yearly Figures

Number of Assessments Commenced

Table C.9 provides an analysis of the total number of assessments commenced, and assessments commenced in respect of priority and other cases, for the year ending March 2004, including a comparison with the previous year.

Table C.9 Assessments Commenced, by Year

	Year Ending:		Change
	March 04	March 03	
Priority Cases	22,280	20,294	+1,986
Other Cases	15,024	14,798	+226
All Assessments Commenced	37,304	35,092	+2,212

Source: CP4

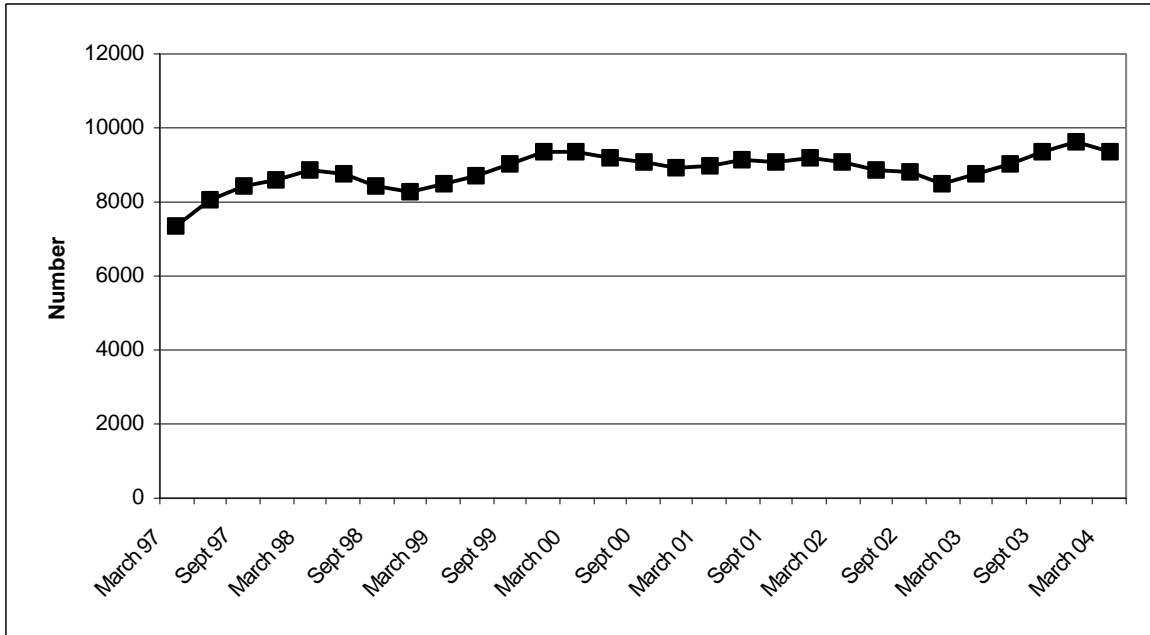
Trends

The trends described in this section are based on data which are averages of figures for four quarters. For example, the figure for March 2004 is based on the average of the figures for the four quarters ending March 2004.

Trends in Number of Assessments Commenced

Since 1997, there has been no overall trend in the number of assessments commenced (Figure C.14).

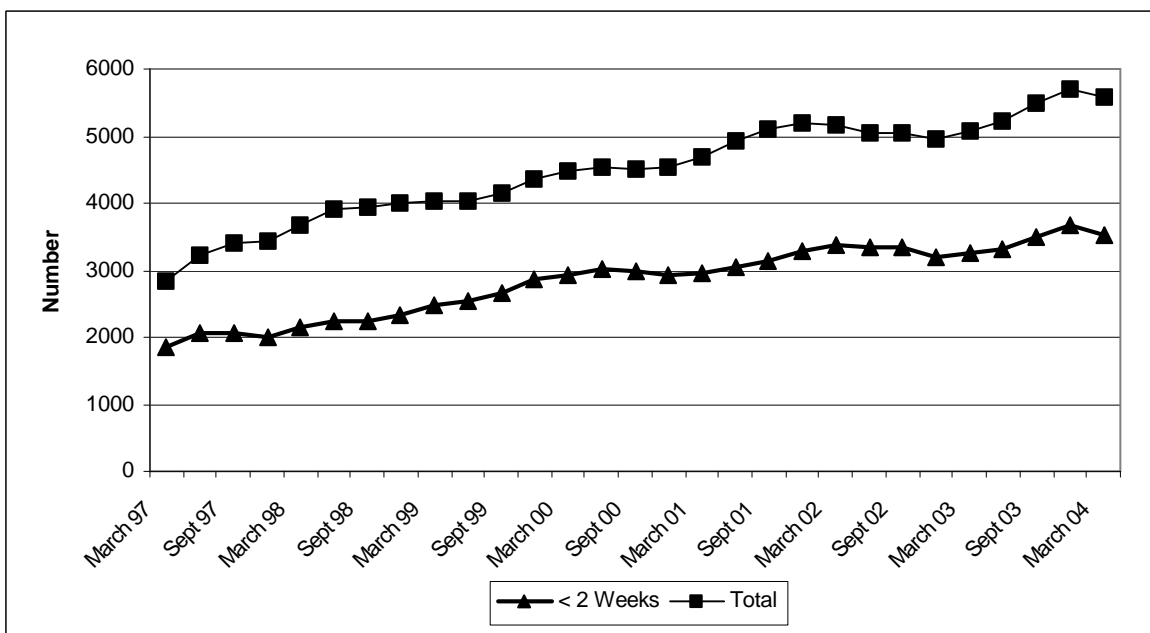
Figure C.14 Trends in Assessments Commenced



Source: CP4

Since 1997, there has been a general increase in the total number of assessments commenced in respect of priority cases and also in the total number of priority cases commenced within two weeks of referral (Figure C.15).

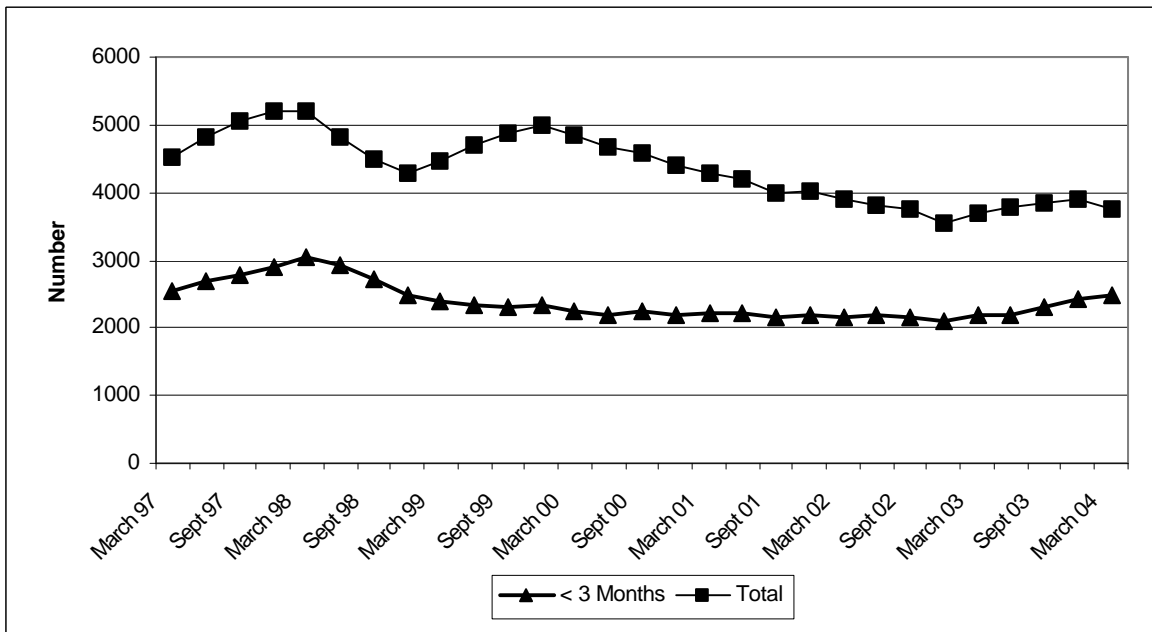
Figure C.15 Trends in Assessments Commenced in Respect of Priority Cases



Source: CP4

In recent years, there has been an overall decrease in the total number of assessments commenced in respect of other cases. Up to 2000, there was an overall decrease in the total number of other cases commenced within three months of referral, since when the figures have shown little change (Figure C.16).

Figure C.16 Trends in Assessments Commenced in Respect of Other Cases



Source: CP4