

Part A: Persons Waiting for Assessment

Quarterly Figures

Numbers of Persons Waiting for Assessment

Table A.1 provides an analysis of the number of persons waiting for assessment by community occupational therapists, according to whether these were priority cases or other cases. This table shows the figures for 30 September 2003, and includes comparisons with the position at the end of the previous quarter and the end of the corresponding quarter last year.

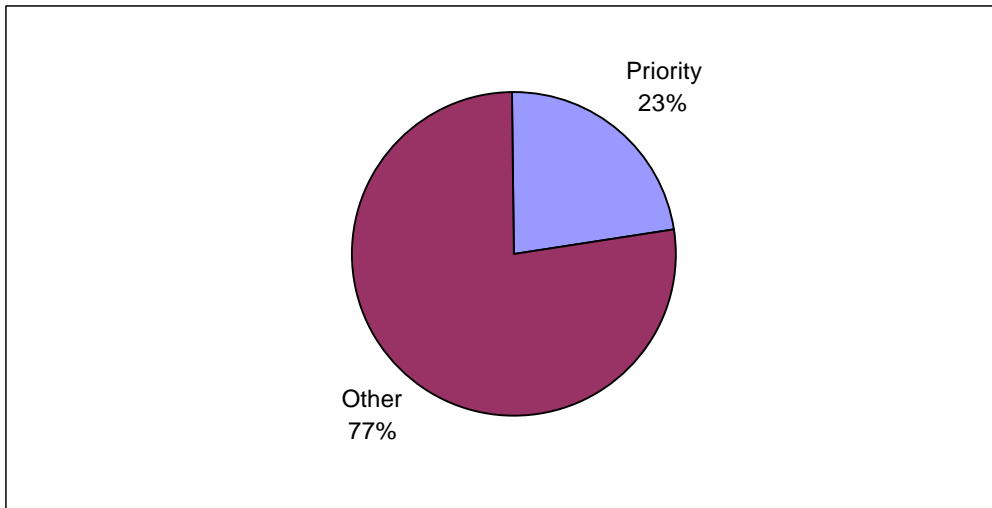
Table A.1 Persons Waiting for Assessment, by Quarter

	Quarter Ending:			Quarterly Change	Annual Change
	Sept 03	June 03	Sept 02		
Priority Cases	1,880	1,968	2,052	-88	-172
Other Cases	6,390	6,282	7,775	+108	-1,385
All Persons Waiting	8,270	8,250	9,827	+20	-1,557

Source: CP4

Figure A.1 shows the percentages of priority and other cases waiting for assessment at the end of September 2003.

Figure A.1 Persons Waiting for Assessment, according to Priority and Other Cases

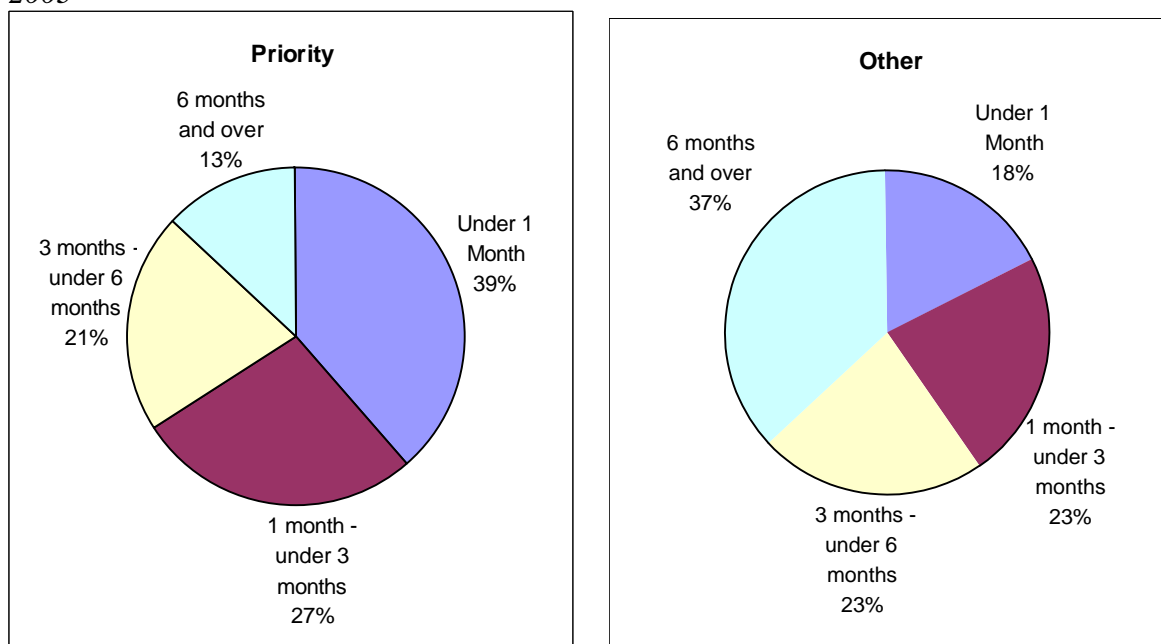


Source: CP4

Number of Persons Waiting for Assessment, by Length of Time Waiting

Figure A.2 provides an analysis of persons waiting for assessment, according to length of time waiting, for the quarter ending September 2003. This is shown for priority and other cases.

Figure A.2 Persons Waiting for Assessment, by Time Waiting, Quarter Ending 30 September 2003



Source: CP4

Table A.2 shows the number of persons waiting for assessment, by length of time waiting, for the current quarter, previous quarter and corresponding quarter last year. This is shown for priority cases, other cases and all cases.

Table A.2 Persons Waiting for Assessment, by Time Waiting and Quarter

(a) Priority Cases

	Quarter Ending:			Quarterly Change	Annual Change
	Sept 03	June 03	Sept 02		
Under 1 month	725	724	740	+1	-15
1 month - under 3 months	515	641	601	-126	-86
3 months - under 6 months	397	355	404	+42	-7
6 months and over	243	248	307	-5	-64
All Priority Cases	1,880	1,968	2,052	-88	-172

Source: CP4

(b) Other Cases

	Quarter Ending:			Quarterly Change	Annual Change
	Sept 03	June 03	Sept 02		
Under 1 month	1,128	941	1,279	+187	-151
1 month - under 3 months	1,443	1,548	1,685	-105	-242
3 months - under 6 months	1,449	1,469	1,687	-20	-238
6 months and over	2,370	2,324	3,124	+46	-754
All Other Cases	6,390	6,282	7,775	+108	-1,385

Source: CP4

(c) All Cases

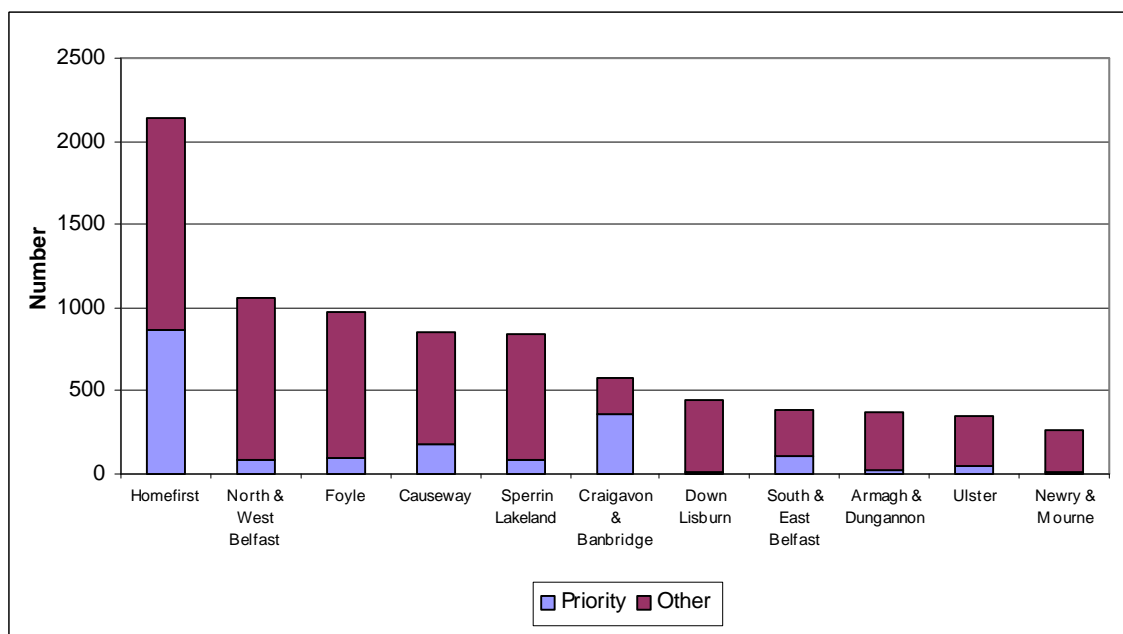
	Quarter Ending:			Quarterly Change	Annual Change
	Sept 03	June 03	Sept 02		
Under 1 month	1,853	1,665	2,019	+188	-166
1 month - under 3 months	1,958	2,189	2,286	-231	-328
3 months - under 6 months	1,846	1,824	2,091	+22	-245
6 months and over	2,613	2,572	3,431	+41	-818
All Cases	8,270	8,250	9,827	+20	-1,557

Source: CP4

Number Waiting for Assessment, by Trust

An analysis for the latest quarter of the number of persons waiting for assessment by whether they were priority cases or other cases, according to Trust, is shown in Figure A.3.

Figure A.3 Persons Waiting for Assessment, by Trust, Quarter Ending September 2003



Source: CP4

Table A.3 shows, for each Trust, the number of persons waiting according to priority and other cases, and the number and percentage waiting for six months or more.

Table A.3 Persons Waiting for Assessment, by Trust, 30 September 2003

Trust	Priority Cases			Other Cases		
	Total Waiting	Number Waiting 6 months or More	Percentage Waiting 6 Months or More	Total Waiting	Number Waiting 6 months or More	Percentage Waiting 6 Months or More
Down Lisburn	11	0	0%	428	5	1%
North & West Belfast	88	0	0%	970	371	38%
South & East Belfast	114	0	0%	271	11	4%
Ulster	46	0	0%	303	11	4%
Causeway	181	3	2%	669	331	49%
Homefirst	871	228	26%	1,274	586	46%
Armagh & Dungannon	20	0	0%	358	75	21%
Craigavon & Banbridge	365	0	0%	217	217	100%
Newry & Mourne	10	0	0%	251	10	4%
Foyle	93	11	12%	884	279	32%
Sperrin Lakeland	81	1	1%	765	474	62%
Northern Ireland	1,880	243	13%	6,390	2,370	37%

Source: CP4

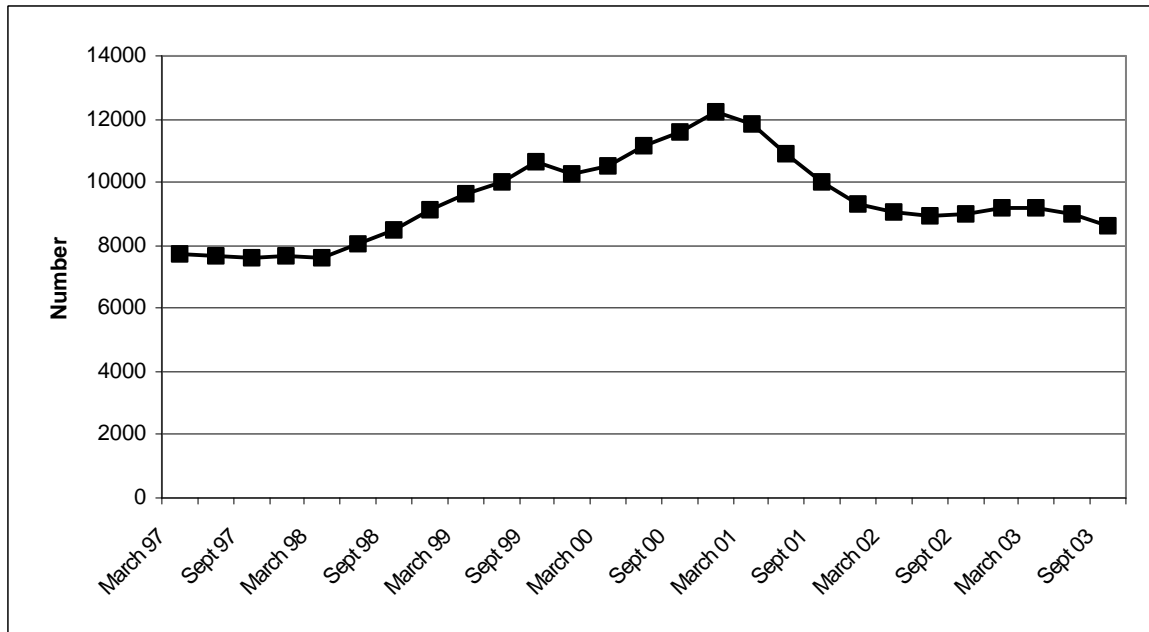
Trends

The trends described in this section are based on data which are averages of figures for four quarters. For example, the figure for September 2003 is based on the average of the figures for the four quarters ending September 2003.

Trends in Number of Persons Waiting for Assessment

There has been an overall decrease since 2000 in the number of all persons waiting for assessment (Figure A.4).

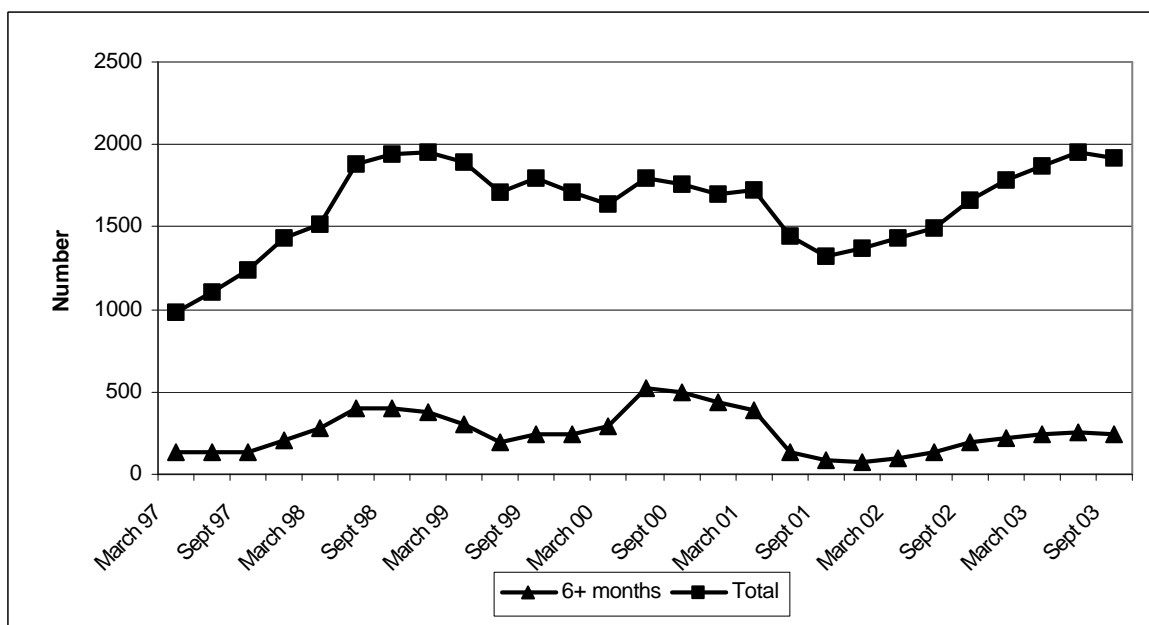
Figure A.4 Trends in Persons Waiting for Assessment



Source: CP4

In recent months, there has been an increase in the total number of priority cases waiting for assessment, and in the number of priority cases waiting for six months or more (Figure A.5).

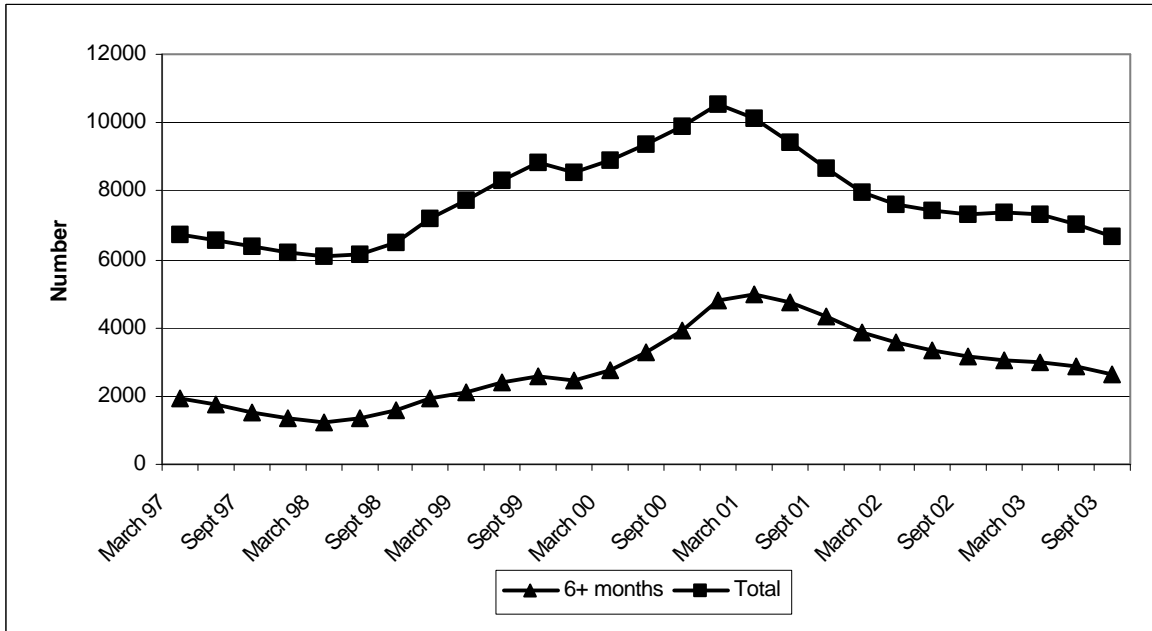
Figure A.5 Trends in Priority Cases Waiting for Assessment



Source: CP4

There has been an overall decrease since 2000 in the total number of other cases waiting for assessment and also in the total number of other cases waiting for six months or more (Figure A.6).

Figure A.6 Trends in Other Cases Waiting for Assessment



Source: CP4

Part B: Referrals

Quarterly Figures

Number of Referrals for Assessment

An analysis of the number of referrals for assessment by community occupational therapists, according to whether these were in respect of priority cases or other cases, for the quarter ending September 2003, is shown in Table B.4. This table includes comparisons with the previous quarter and the corresponding quarter last year.

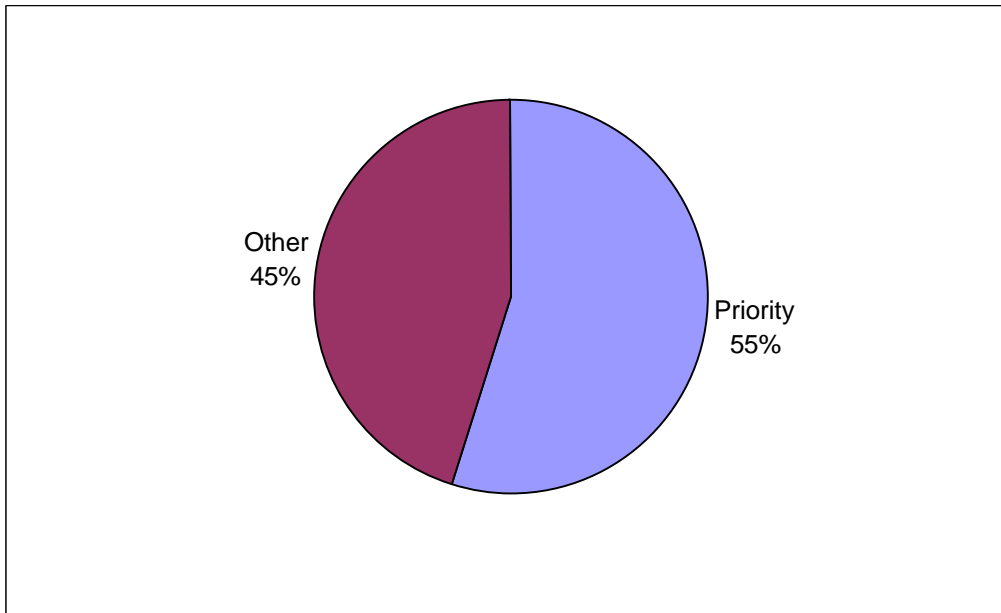
Table B.4 Referrals, by Quarter

	Quarter Ending:			Quarterly Change	Annual Change
	Sept 03	June 03	Sept 02		
Priority Cases	6,165	6,085	5,875	+80	+290
Other Cases	5,126	5,358	5,936	-232	-810
All Referrals	11,291	11,443	11,811	-152	-520

Source: CP4

Figure B.7 shows the percentages of referrals, which were priority and other cases at the end of September 2003.

Figure B.7 Referrals, according to Priority and Other Cases

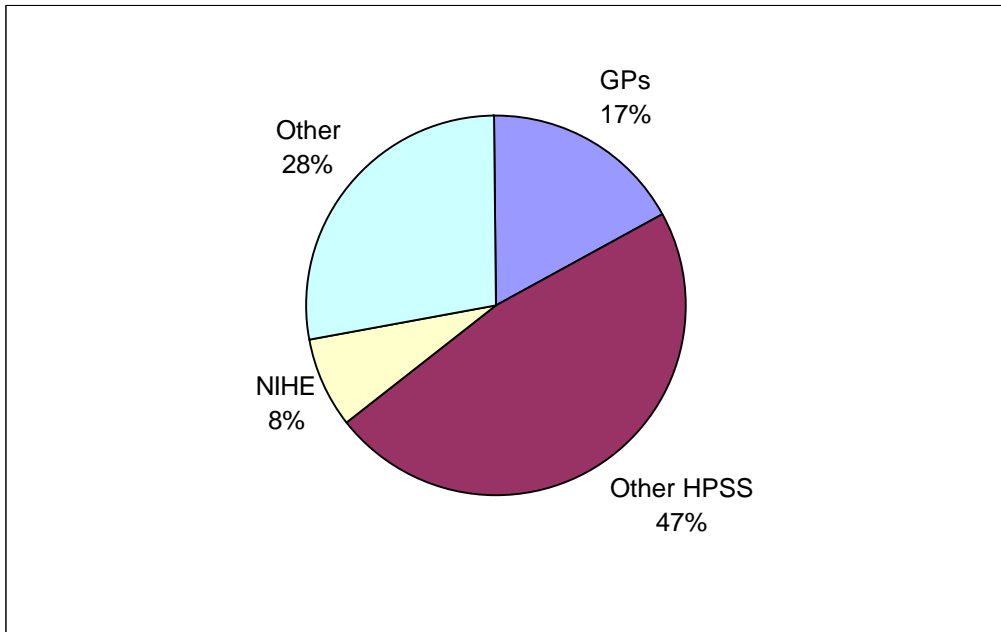


Source: CP4

Number of Referrals, by Source of Referral

Figure B.8 provides an analysis of referrals according to source, for the latest quarter.

Figure B.8 Referrals, by Source, Quarter Ending September 2003

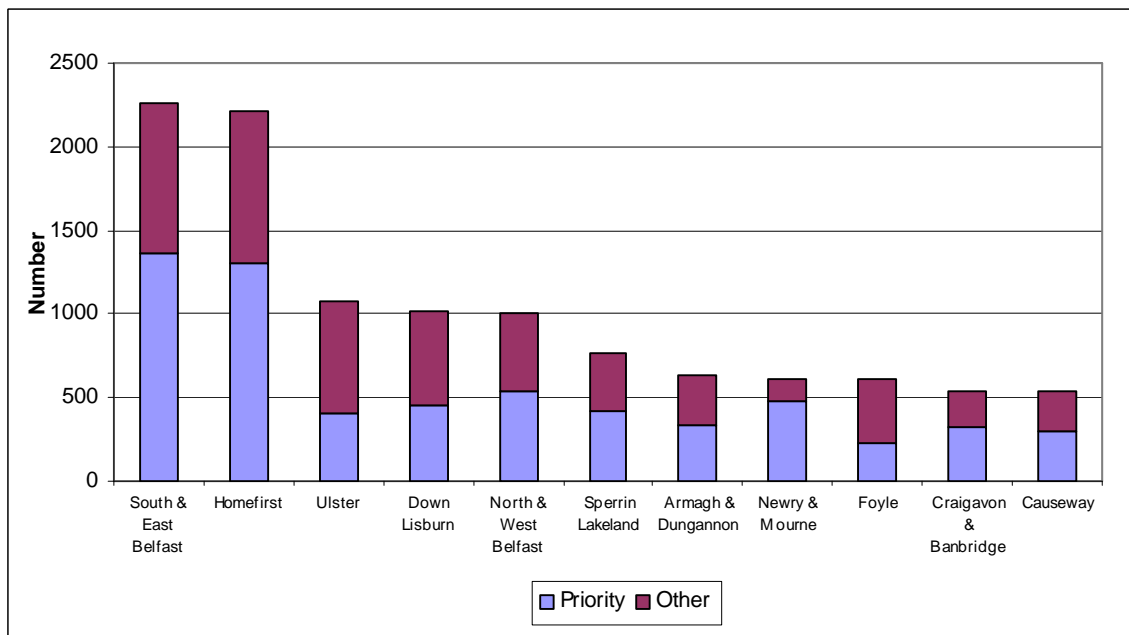


Source: CP4

Number of Referrals, by Trust

An analysis for the latest quarter of referrals by whether they were priority cases or other cases, according to Trust, is shown in Figure B.9.

Figure B.9 Referrals, by Trust, Quarter Ending September 2003



Source: CP4

Yearly Figures

Number of Referrals

Table B.5 provides an analysis of the total number of referrals, and referrals in respect of priority and other cases, for the year ending September 2003, including a comparison with the previous year.

Table B.5 Referrals, by Year

	Year Ending:		Change
	Sept 03	Sept 02	
Priority Cases	23,579	24,260	-681
Other Cases	21,345	21,608	-263
All Referrals	44,924	45,868	-944

Source: CP4

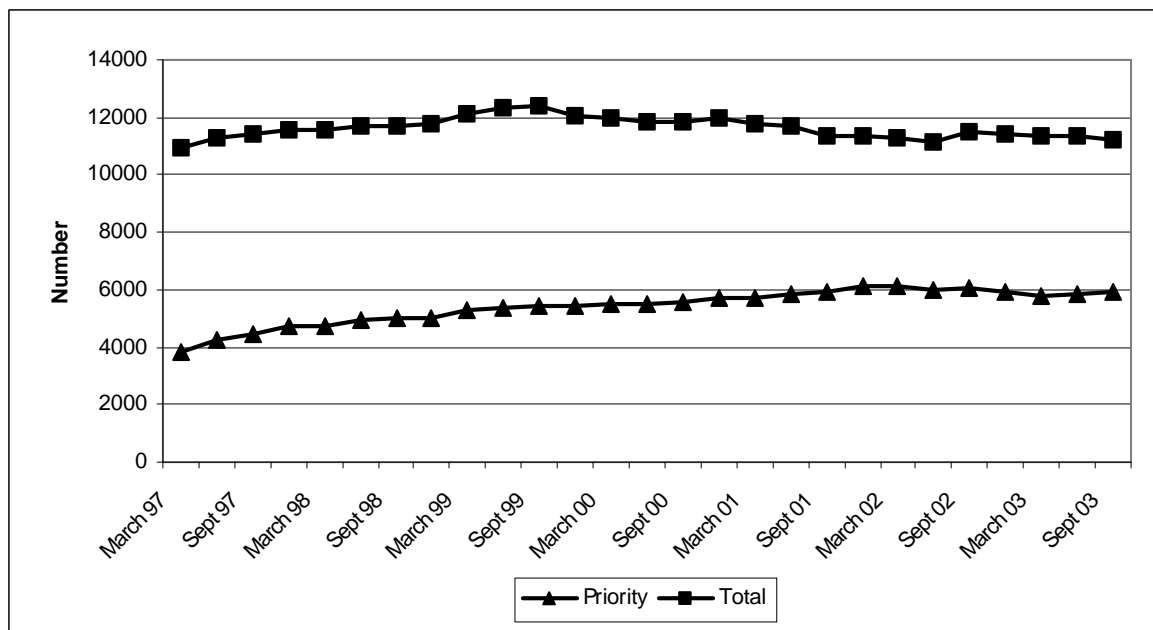
Trends

The trends described in this section are based on data which are averages of figures for four quarters. For example, the figure for September 2003 is based on the average of the figures for the four quarters ending September 2003.

Trends in Referrals

In recent months, there has been little change in the number of referrals in respect of priority cases, but there has been a slight downward trend in the total number of referrals since 1999 (Figure B.10).

Figure B.10 Trends in Referrals



Source: CP4

Part C: Assessments Commenced

Quarterly Figures

Numbers of Assessments Commenced

Table C.6 provides an analysis of the number of assessments commenced by community occupational therapists, according to whether these were in respect of priority cases or other cases. This table shows the figures for 30 September 2003, and includes comparisons with the position at the end of the previous quarter and the end of the corresponding quarter last year.

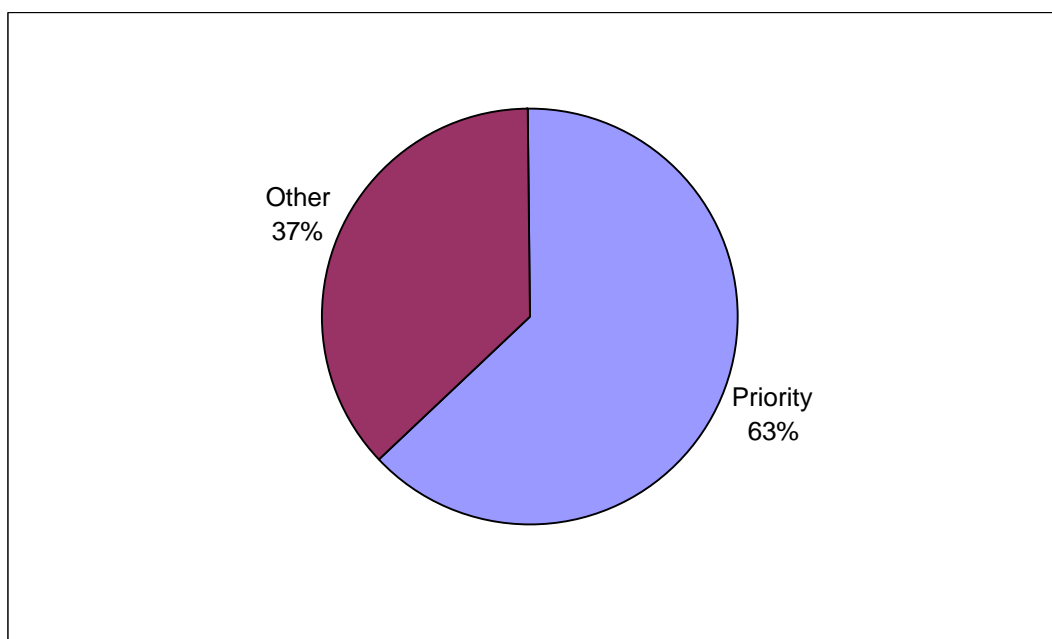
Table C.6 Assessments Commenced, by Quarter

	Quarter Ending:			Quarterly Change	Annual Change
	Sept 03 ¹	June 03	Sept 02		
Priority Cases	6,030	5,594	4,947	+436	+1,083
Other Cases	3,579	3,748	3,379	-169	+200
All Assessments Commenced	9,609	9,342	8,326	+267	+1,283

¹Including estimated figures for Down Lisburn HSS Trust
Source: CP4

Figure C.11 shows the percentages of assessments commenced which were priority and other cases at the end of September 2003.

Figure C.11 Assessments Commenced, according to Priority and Other Cases

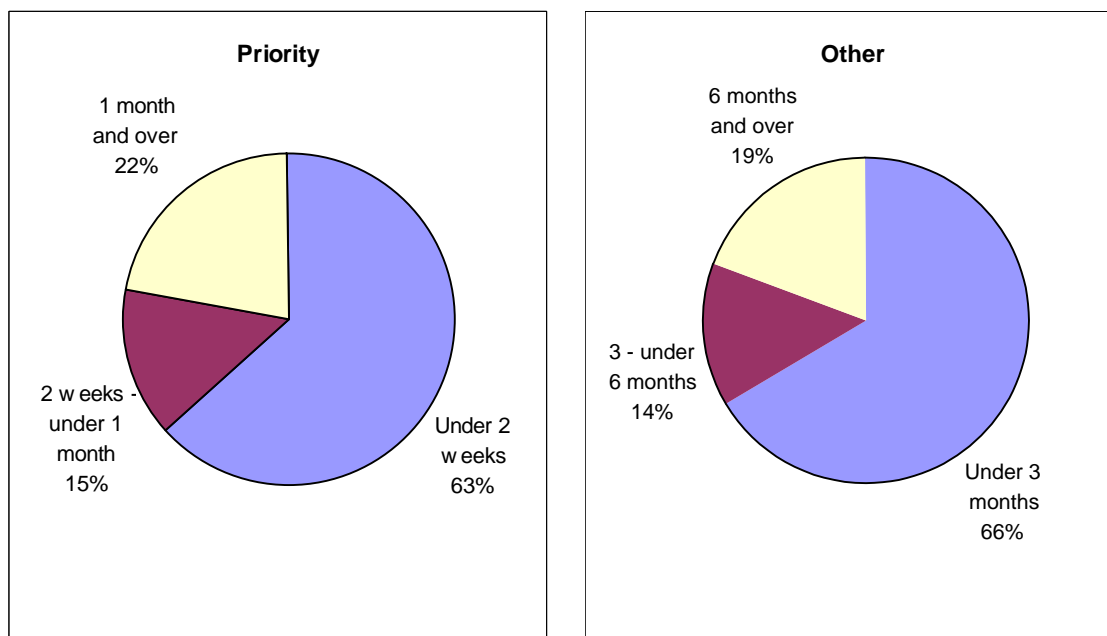


Source: CP4

Number of Assessments Commenced, by Length of Time from Referral

Figure C.12 provides an analysis of assessments commenced, according to length of time between referral and start of assessment, for the quarter ending September 2003. This is shown for priority and other cases.

Figure C.12 Assessments Commenced, by Time from Referral, Quarter Ending 30 September 2003



Source: CP4

Table C.7 shows the number of assessments commenced, by length of time from referral, for the current quarter, previous quarter and corresponding quarter last year. This is shown for priority cases and other cases.

Table C.7 Assessments Commenced, by Time from Referral and Quarter Ending 30 September 2003

(a) Priority Cases

	Quarter Ending:			Quarterly Change	Annual Change
	Sept 03 ¹	June 03	Sept 02		
Under 2 weeks	3,797	3,462	3,123	+335	+674
2 weeks - under 1 month	887	890	780	-3	+107
1 month and over	1,346	1,242	1,044	+104	+302
All Priority Cases	6,030	5,594	4,947	+436	+1,083

¹Including estimated figures for Down Lisburn HSS Trust

Source: CP4

(b) Other Cases

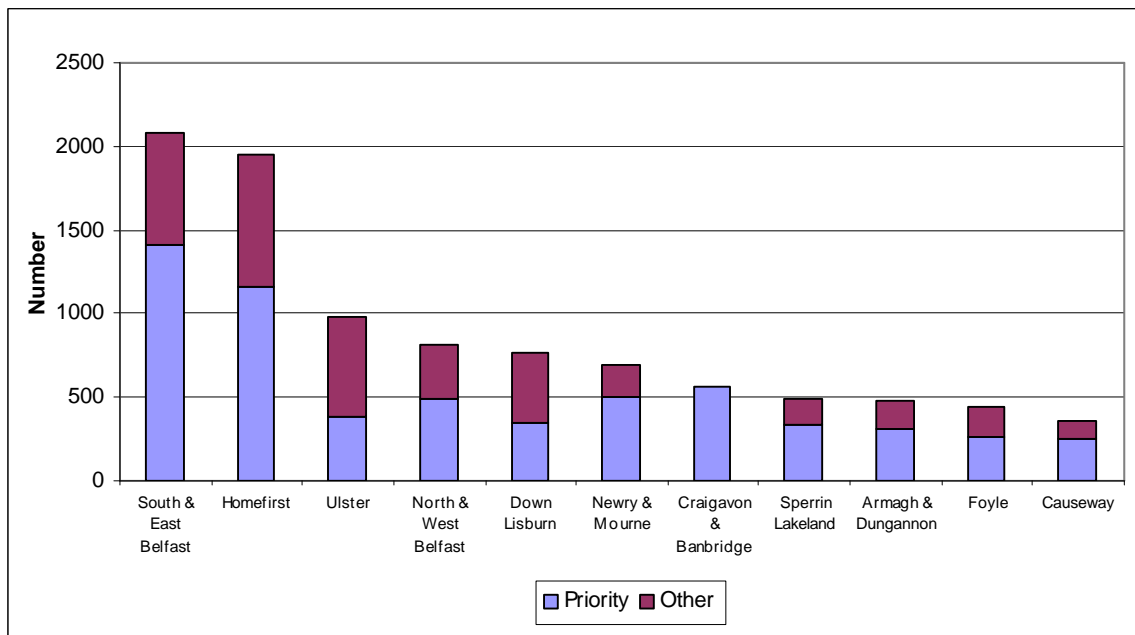
	Quarter Ending:			Quarterly Change	Annual Change
	Sept 03 ¹	June 03	Sept 02		
Under 3 months	2,377	2,301	1,934	+76	+443
3 months - under 6 months	506	517	391	-11	+115
6 months and over	696	930	1,054	-234	-358
All Other Cases	3,579	3,748	3,379	-169	+200

¹ Including estimated figures for Down Lisburn HSS Trust
Source: CP4

Number of Assessments Commenced, by Trust

An analysis for the latest quarter of assessments commenced, in respect of whether they were priority cases or other cases, according to Trust, is shown in Figure C.13.

Figure C.13 Assessments Commenced, by Trust, Quarter Ending September 2003



Source: CP4

Table C.8 shows, for each Trust, the number of assessments commenced according to priority and other cases, and the number and percentage commenced within the Charter Standard of two weeks for priority cases and three months for other cases.

Table C.8 Assessments Commenced, by Trust, 30 September 2003

Trust	Priority Cases			Other Cases		
	Total Commenced	Number Commenced within 2 Weeks	Percentage Commenced within 2 Weeks	Total Commenced	Number Commenced within 3 Months	Percentage Commenced within 3 Months
Down Lisburn ¹	342	228	67%	419	169	40%
North & West Belfast	493	221	45%	323	109	34%
South & East Belfast	1,412	1,059	75%	665	645	97%
Ulster	386	322	83%	596	516	87%
Causeway	257	103	40%	100	48	48%
Homefirst	1,157	601	52%	796	573	72%
Armagh & Dungannon	313	250	80%	162	115	71%
Craigavon & Banbridge	567	329	58%	0	0	-
Newry & Mourne	506	506	100%	187	30	16%
Foyle	263	89	34%	177	114	64%
Sperrin Lakeland	334	89	27%	154	58	38%
Northern Ireland	6,030	3,797	63%	3,579	2,377	66%

¹ Figures for Down Lisburn HSS Trust have been estimated
Source: CP4

Yearly Figures

Number of Assessments Commenced

Table C.9 provides an analysis of the total number of assessments commenced, and assessments commenced in respect of priority and other cases, for the year ending September 2003, including a comparison with the previous year.

Table C.9 Assessments Commenced, by Year

	Year Ending:		Change
	Sept 03 ¹	Sept 02	
Priority Cases	21,994	20,158	+1,836
Other Cases	15,325	14,991	+334
All Assessments Commenced	37,319	35,149	+2,170

¹ Including estimated figures for Down Lisburn HSS Trust
Source: CP4

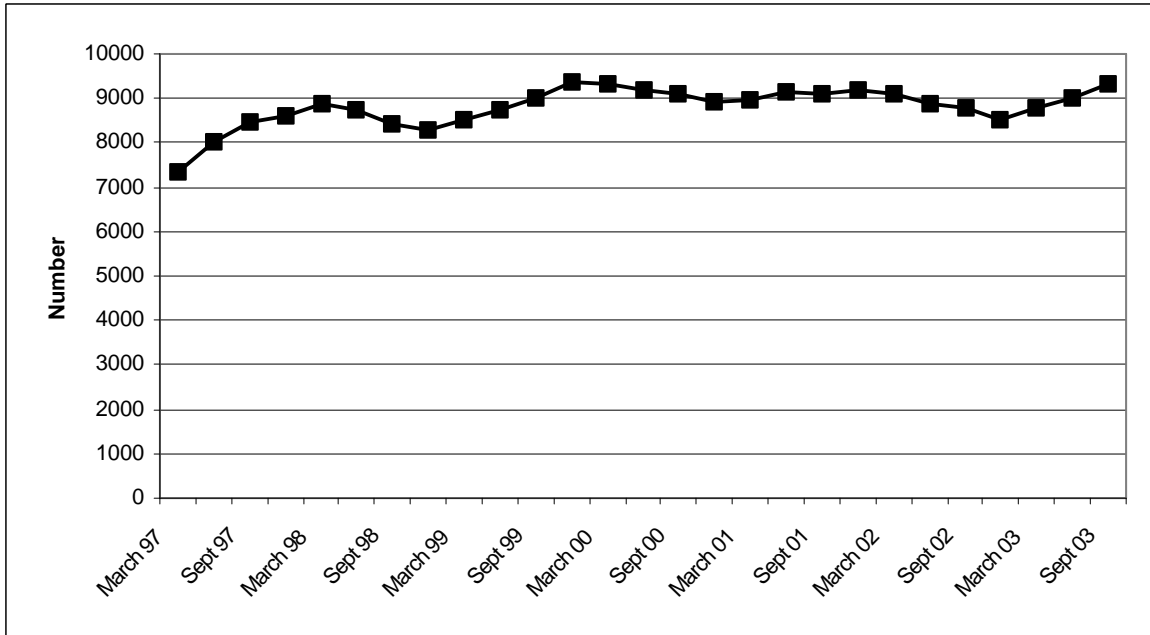
Trends

The trends described in this section are based on data which are averages of figures for four quarters. For example, the figure for September 2003 is based on the average of the figures for the four quarters ending September 2003.

Trends in Number of Assessments Commenced

Since 1997, there has been no overall trend in the number of assessments commenced (Figure C.14).

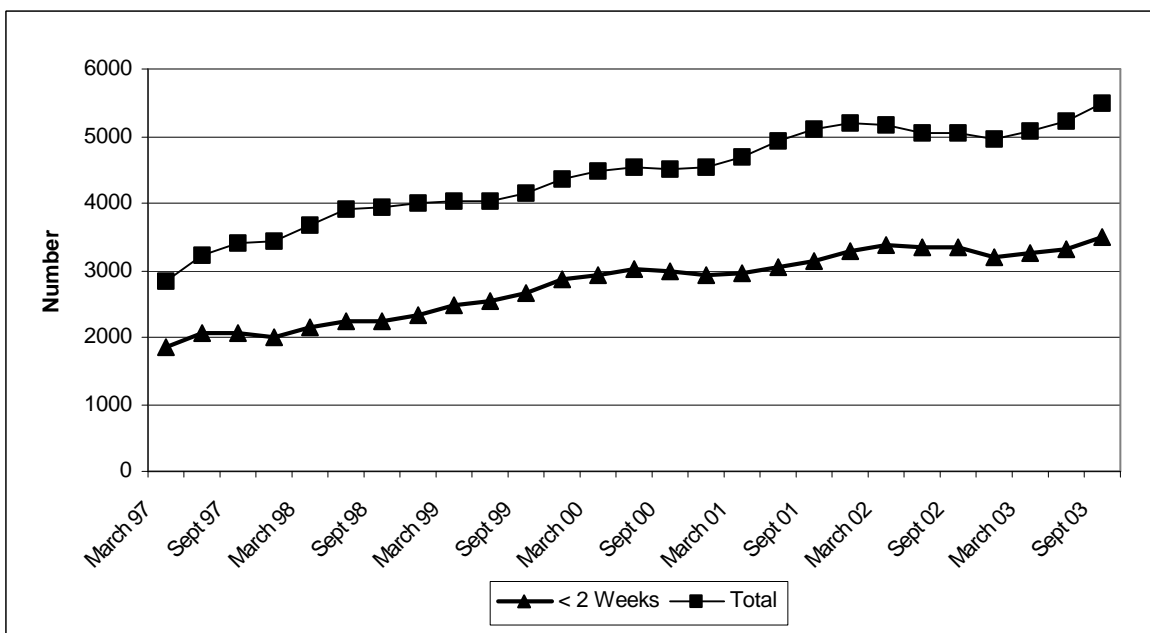
Figure C.14 Trends in Assessments Commenced



Source: CP4

Since 1997, there has been a general increase in the total number of assessments commenced in respect of priority cases and also in the total number of priority cases commenced within two weeks of referral (Figure C.15).

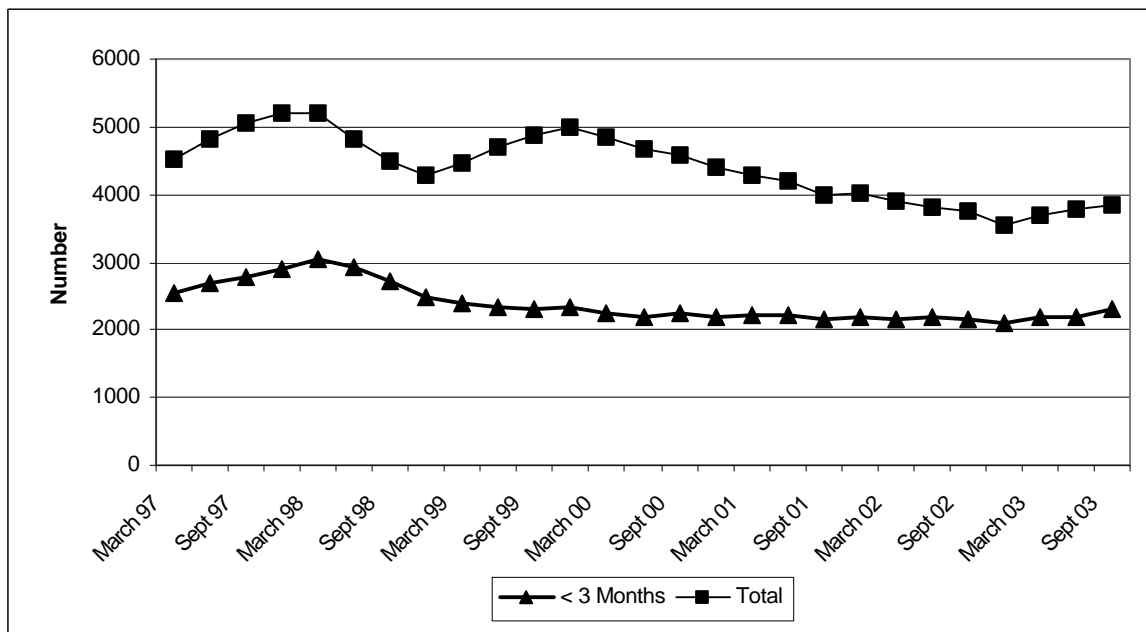
Figure C.15 Trends in Assessments Commenced in Respect of Priority Cases



Source: CP4

In recent years, there has been an overall decrease in the total number of assessments commenced in respect of other cases. Up to 2000, there was an overall decrease in the total number of other cases commenced within three months of referral, since when the figures have shown little change (Figure C.16).

Figure C.16 Trends in Assessments Commenced in Respect of Other Cases



Source: CP4