



Assessment by Occupational Therapists in Northern Ireland - 31 March 2005

This statistical bulletin presents information on assessments by Occupational Therapists in Northern Ireland for the quarter ending 31 March 2005. It monitors information on referrals for assessment, waiting times for assessment, and assessments commenced during the quarter. Information is collected using the quarterly CP4 return.

Main Findings

Persons Waiting for Assessment

- At 31 March 2005, 10,231 people were waiting for assessment by community occupational therapists, a decrease of 469 (4%) from the number waiting at the end of the previous quarter, but an increase of 955 (10%) from the number waiting at the end of the corresponding quarter last year.
- Of those waiting for assessment by community occupational therapists at 31 March 2005, 2,735 (27%) were priority cases and 7,496 (73%) were other cases.
- Since 31 December 2004, the number of priority cases waiting for assessment increased by 49 (2%), whilst the number of other (non-priority) cases decreased by 518 (6%).
- Over the last year from 31 March 2004, the number of priority cases waiting assessment increased by 370 (16%), and the number of other cases increased by 585 (8%).

- One fifth (20%) of priority cases and 44% of other cases had been waiting for assessment for 6 months or more at 31 March 2005.
- Since 31 December 2004, the proportion of priority and other cases waiting 6 months or more for assessment increased by 4 and 1 percentage points respectively.
- Since 31 March 1997, the number of people waiting for assessment has increased by 26%, from 8,122 at 31 March 1997 to 10,231 at 31 March 2005.

Referrals for Assessment

- During the quarter ending 31 March 2005, there were 11,936 referrals for assessment by community occupational therapists, an increase of 578 (5%) from the previous quarter, but a decrease of 359 (3%) from the corresponding figure at 31 March 2004.

- During the quarter ending 31 March 2005, over half (54%) of all referrals for assessment by community occupational therapists were from the HPSS other than GP's, 13% from GP's, 8% from NIHE, and 24% from other sources.
- Between 31 March 1997 and 31 March 2005, the average number of referrals for assessment increased by 9%, from 10,906 in 31 March 1997 to 11,853 31 March 2005.

Assessments Commenced

- During the quarter ending 31 March 2005, 9,859 assessments were commenced by community occupational therapists, an increase of 4% (369) on the number commenced during the previous quarter, and 7% (675) more than the number commenced during the same quarter last year.

- Almost 6 in 10 (59%) assessments in respect of priority cases met the Charter Standard by commencing within 2 weeks of the referral, 19% in 2 weeks to 1 month, and 22% in 1 month or more. 49% of assessments in respect of other cases met the Charter Standard by commencing within 3 months of the referral, 30% in 6 months or more, and 21% in 3 to 6 months.
- During the quarter ending 31 March 2005, South & East Belfast (1,110) had the highest number of assessments commenced in respect of priority cases, whilst Newry & Mourne (566) had the lowest.
- Between 31 March 1997 and 31 March 2005, the average number of assessments commenced has increased by 31%, from 7,364 to 9,630 respectively.

Contents

	Page
Section A: Persons Waiting Assessment	1
Numbers of People Waiting Assessment.....	1
Length of Time Waiting.....	3
Number Waiting by Trust.....	6
Trends.....	8
Section B: Referrals	10
Number of Referrals for Assessment.....	10
Source of Referral.....	11
Number of Referrals during Year.....	13
Trends.....	14
Section C: Assessments Commenced	15
Number of Assessments Commenced.....	15
Length of Time from Referral.....	16
Assessments Commenced by Trust.....	18
Number of Assessments Commenced during Year.....	20
Trends.....	21
Technical Notes.....	24
Additional Information.....	25

Section A: Persons Waiting for Assessment

Number of Persons Waiting for Assessment

Table A.1 provides an analysis of the number of persons waiting for assessment by community

occupational therapists, according to whether these were priority cases or other cases.

Table A.1: Persons Waiting for Assessment

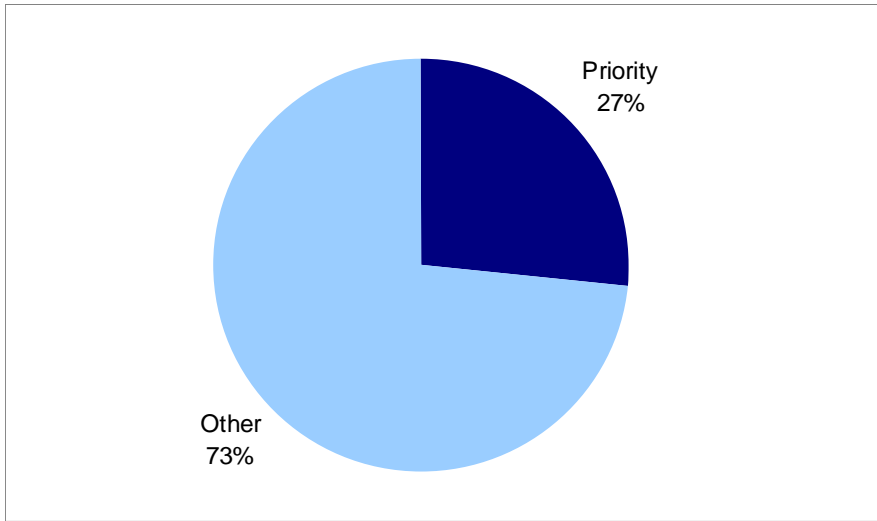
	Quarter Ending:			Quarterly Change	Annual Change
	31 March 2005	31 December 2004	31 March 2004		
Priority Cases	2,735	2,686	2,365	49	370
Other Cases	7,496	8,014	6,911	-518	585
All Persons Waiting	10,231	10,700	9,276	-469	955

Source: CP4

- At 31 March 2005, 10,231 people were waiting for assessment by community occupational therapists, a decrease of 469 (4%) from the number waiting at the end of the previous quarter, but an increase of 955 (10%) from the number waiting at the end of the corresponding quarter last year.
- Of those waiting for assessment by community occupational therapists at 31 March 2005, 2,735 (27%) were priority cases and 7,496 (73%) were other cases.
- Since 31 December 2004, the number of priority cases waiting for assessment increased by 49 (2%), whilst the number of other (non-priority) cases decreased by 518 (6%).
- Over the last year from 31 March 2004, the number of priority cases waiting assessment increased by 370 (16%), and the number of other cases increased by 585 (8%).

Section A: Persons Waiting for Assessment

Figure A.1: Persons Waiting for Assessment by Community Occupational Therapists, according to Priority and Other Cases (Quarter Ending 31 March 2005)



Source: CP4

Section A: Persons Waiting for Assessment

Persons Waiting for Assessment by Length of Time Waiting

Table A.2 shows the number of persons waiting for assessment, by length of time waiting, for the current quarter, previous quarter and

corresponding quarter last year. This is shown for priority cases, other cases and all cases.

Table A.2 (a): Priority Cases Waiting for Assessment by Time Waiting and Quarter

	Quarter Ending:			Quarterly Change	Annual Change
	31 March 2005	31 December 2004	31 March 2004		
Under 1 month	714	624	819	90	-105
1 month - under 3 months	770	969	719	-199	51
3 months - under 6 months	695	654	411	41	284
6 months and over	556	439	416	117	140
All Priority Cases	2,735	2,686	2,365	49	370

Source: CP4

Table A.2 (b): Other Cases Waiting for Assessment by Time Waiting and Quarter

	Quarter Ending:			Quarterly Change	Annual Change
	31 March 2005	31 December 2004	31 March 2004		
Under 1 month	1,207	942	1,290	265	-83
1 month - under 3 months	1,504	1,807	1,512	-303	-8
3 months - under 6 months	1,516	1,842	1,214	-326	302
6 months and over	3,269	3,423	2,895	-154	374
All Other Cases	7,496	8,014	6,911	-518	585

Source: CP4

Section A: Persons Waiting for Assessment

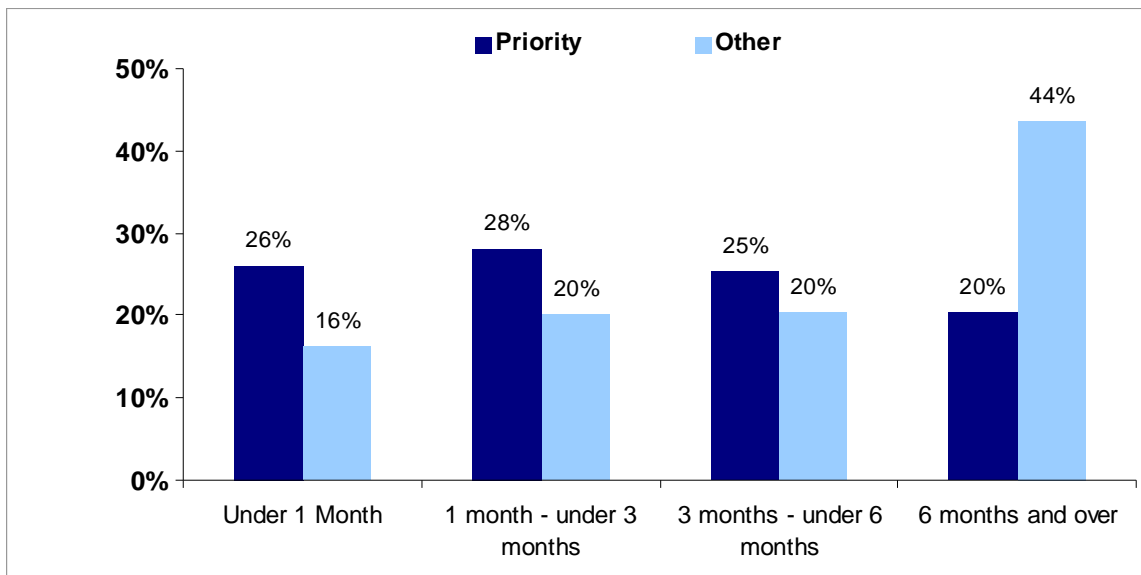
Table A.2 (c): All Cases Waiting for Assessment by Time Waiting and Quarter

	Quarter Ending:			Quarterly Change	Annual Change
	31 March 2005	31 December 2004	31 March 2004		
Under 1 month	1,921	1,566	2,109	355	-188
1 month - under 3 months	2,274	2,776	2,231	-502	43
3 months - under 6 months	2,211	2,496	1,625	-285	586
6 months and over	3,825	3,862	3,311	-37	514
All Cases	10,231	10,700	9,276	-469	955

Source: CP4

- At 31 March 2005, over one third (37%) of all people waiting for assessment had been waiting for 6 months or more, similar to the previous quarter (36%) and the corresponding figure at 31 March 2004 (36%).
- Since the end of the previous quarter, the number of people waiting for assessment decreased by 469, with the most significant decrease in those waiting between 1 and 3 months for assessment (502).

Figure A.2: Persons Waiting for Assessment by Length of Time and according to Priority and Other Cases (Quarter Ending 31 March 2005)



Source: CP4

- One fifth (20%) of priority cases and 44% of other cases had been waiting for assessment for 6 months or more at 31 March 2005.
- Since 31 December 2004, the proportion of priority and other cases waiting 6 months or more for assessment increased by 4 and 1 percentage points respectively.

Section A: Persons Waiting for Assessment

Persons Waiting for Assessment by Trust

Table A.3 shows, for each Trust, the number of persons waiting according to priority and other cases, and the

number and percentage waiting for six months or more.

Table A.3: Persons Waiting for Assessment by Trust at 31 March 2005

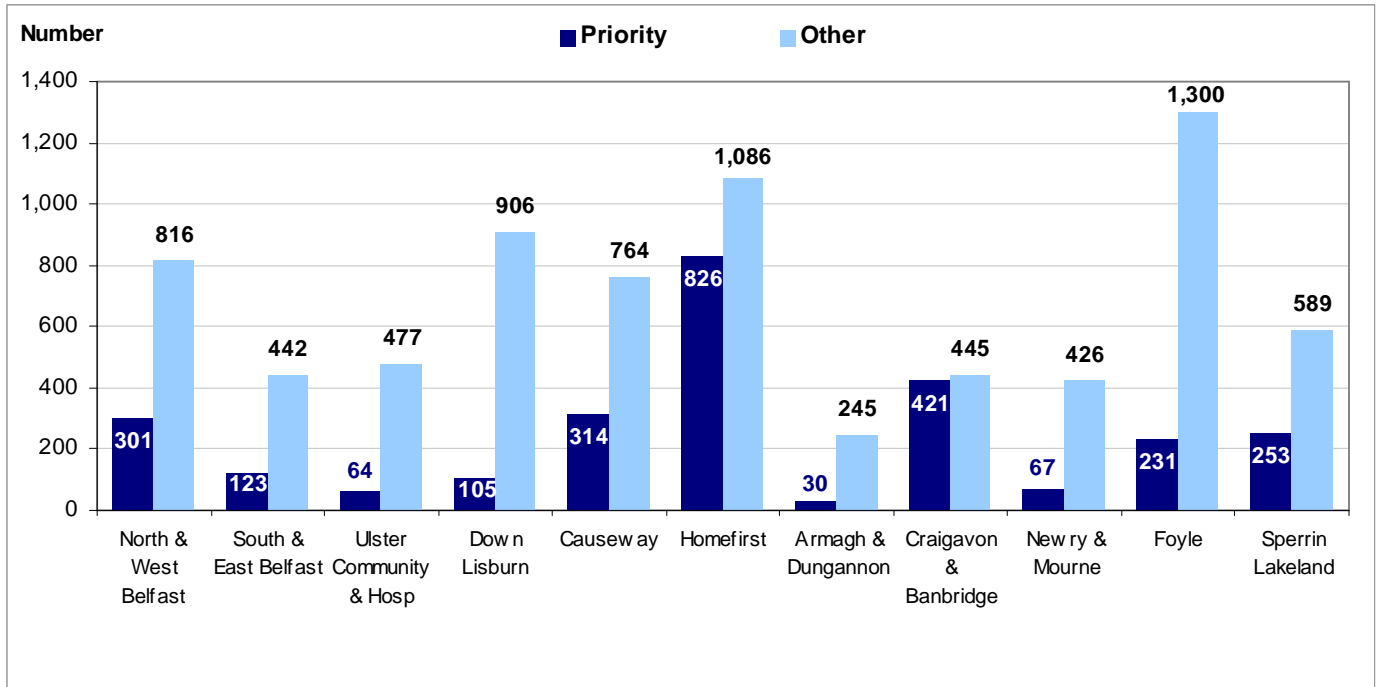
Trust	Priority Cases			Other Cases		
	Total Waiting	Number Waiting 6 Months or More	Percentage Waiting 6 Months or More	Total Waiting	Number Waiting 6 Months or More	Percentage Waiting 6 Months or More
North & West Belfast	301	0	0%	816	357	44%
South & East Belfast	123	0	0%	442	50	11%
Ulster Community & Hos	64	0	0%	477	0	0%
Down Lisburn	105	37	35%	906	349	39%
Causeway	314	91	29%	764	508	66%
Homefirst	826	255	31%	1,086	335	31%
Armagh & Dungannon	30	0	0%	245	27	11%
Craigavon & Banbridge	421	0	0%	445	445	100%
Newry & Mourne	67	0	0%	426	244	57%
Foyle	231	139	60%	1,300	693	53%
Sperrin Lakeland	253	34	13%	589	261	44%
Northern Ireland	2,735	556	20%	7,496	3,269	44%

Source: CP4

- Across Trusts, Homefirst had the highest number of people waiting for assessment designated priority (826) and other cases (1,086), whilst Armagh & Dungannon had the lowest (30) and (245) respectively.
- At 31 March 2005, Foyle had the highest proportion of priority cases (60%) waiting 6 months or more for assessment, and Craigavon & Banbridge had the highest proportion of other cases (100%) waiting 6 months or more for assessment.

Section A: Persons Waiting for Assessment

Figure A.3: Persons Waiting for Assessment by Community Occupational Therapists by Trust and according to Priority and Other Cases (Quarter Ending 31 March 2005)



Source: CP4

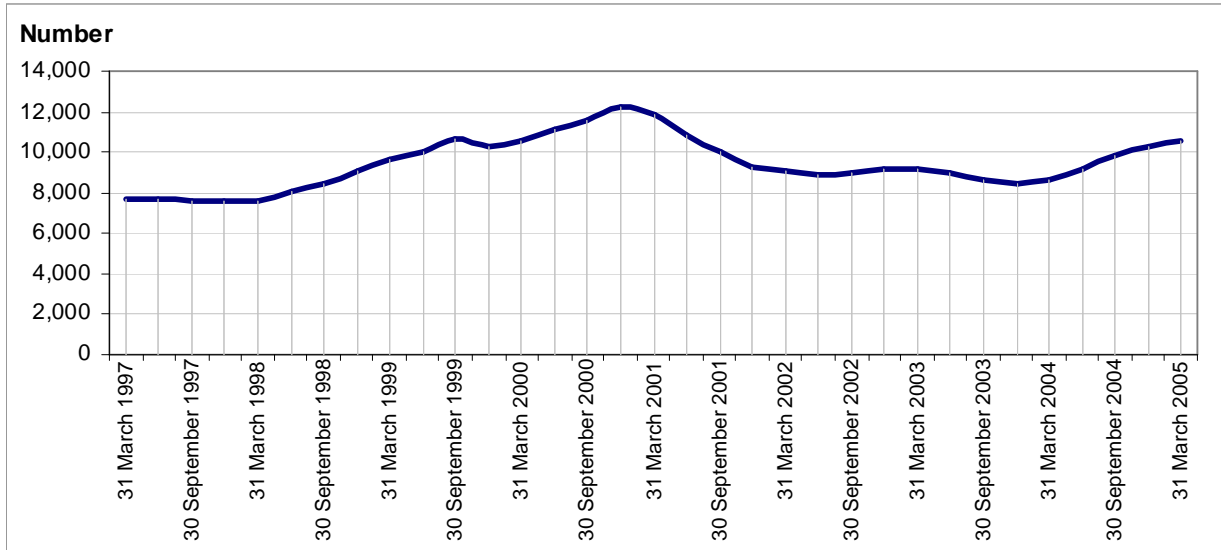
Section A: Persons Waiting for Assessment

Persons Waiting for Assessment Since 31 March 1997

The trends described in this section are based on the averages of figures for four quarters. For example, the

figure for 31 March 2005 is based on the average of the figures for the four quarters ending 31 March 2005.

Figure A.4: All Persons Waiting for Assessment by Community Occupational Therapists (31 March 1997 – 31 March 2005)

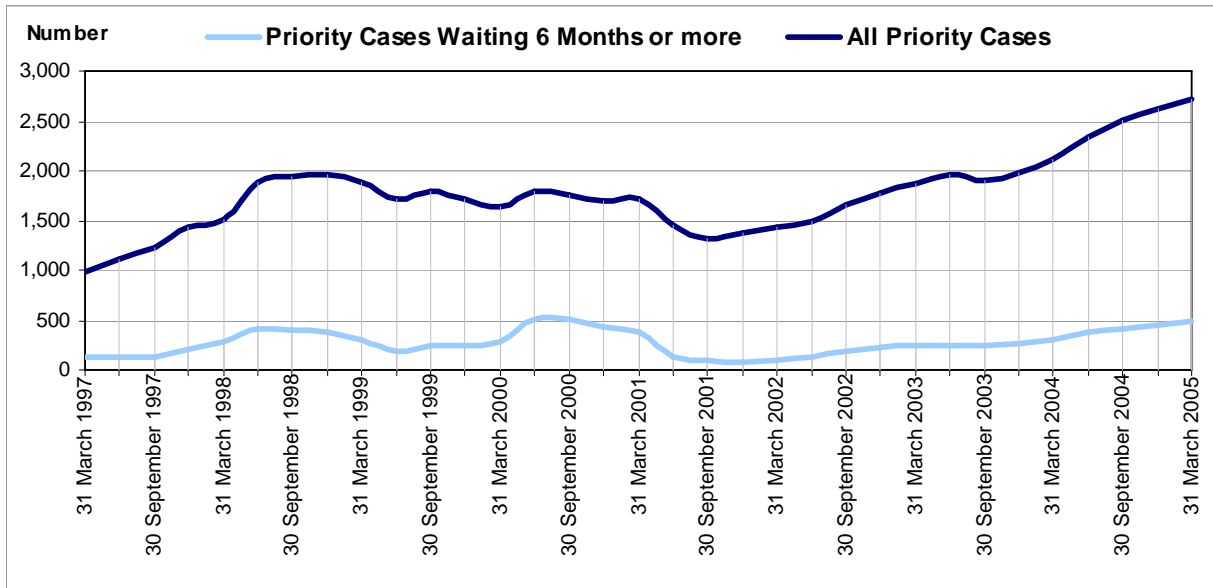


Source: CP4

- Since 31 March 1997, the number of people waiting for assessment has increased by 26%, from 8,122 at 31 March 1997 to 10,231 at 31 March 2005.
- Between 31 March 1997 and 31 March 2005, the highest average number of people waiting for assessment was 12,232 at 31 December 2000, whilst the lowest average number of people waiting for assessment was 7,073 at 30 September 1997.

Section A: Persons Waiting for Assessment

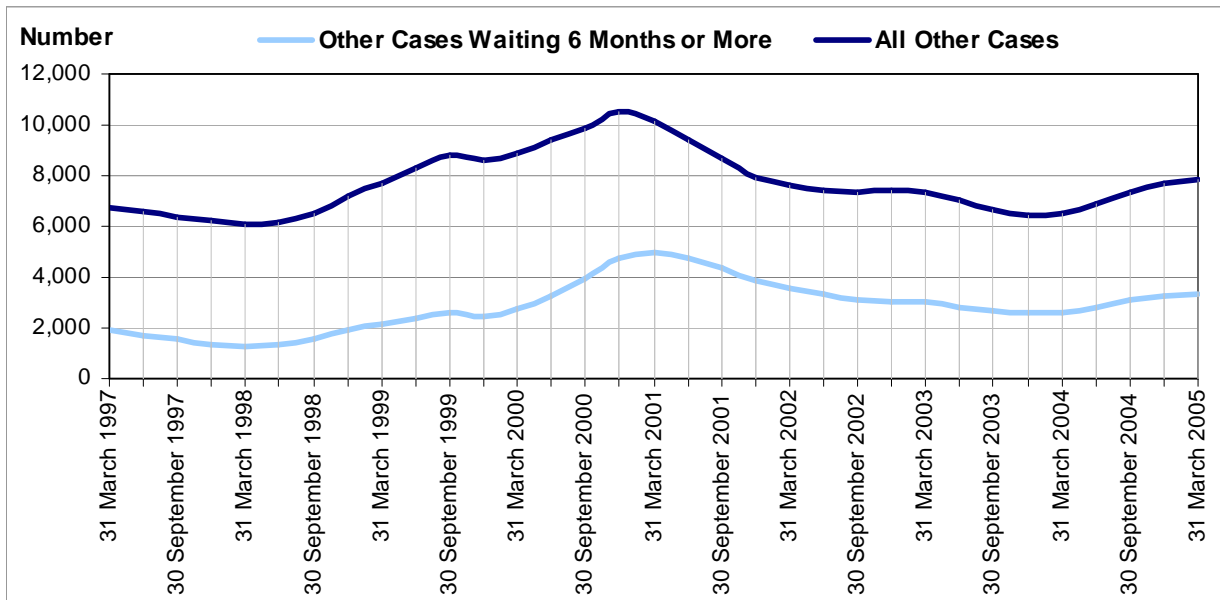
Figure A.5: Priority Cases Waiting for Assessment by Community Occupational Therapists (31 March 1997 – 31 March 2005)



Source: CP4

- The number of priority cases waiting 6 months or more, have increased steadily since 30 September 2001.

Figure A.6: Other Cases Waiting for Assessment by Community Occupational Therapists (31 March 1997 - 31 March 2005)



Source: CP4

- The number of non-priority cases had fallen between 31 March 2001 and 31 March 2004, but have increased slightly since then.

Section B: Referrals for Assessment

Number of Referrals for Assessment

An analysis of the number of referrals for assessment by community occupational therapists, according to whether these were in respect of

priority cases or other cases, for the quarter ending 31 March 2005, is shown in Table B.1.

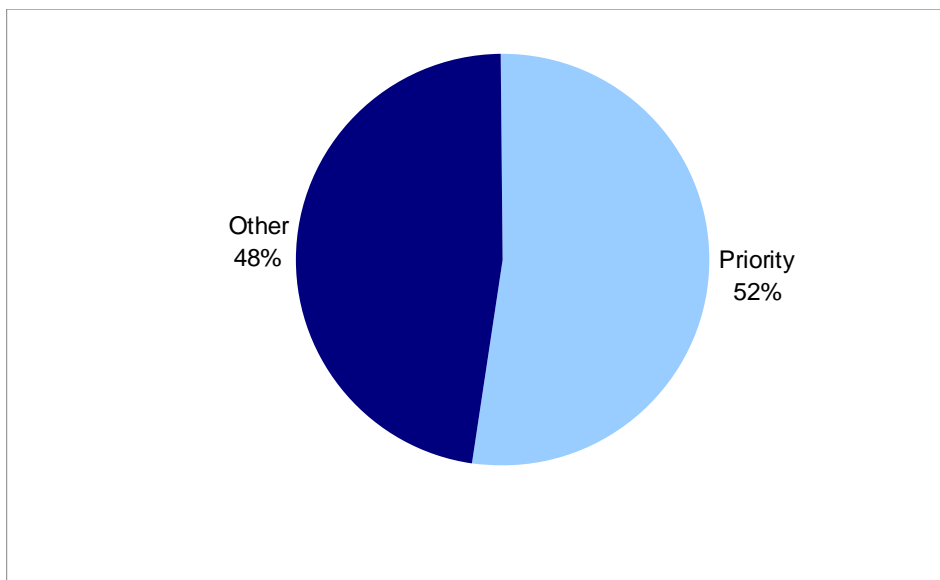
Table B.1: Number of Referrals Received for Assessment by Quarter

	Quarter Ending:			Quarterly Change	Annual Change
	31 March 2005	31 December 2004	31 March 2004		
Priority Cases	6,242	6,168	6,076	74	166
Other Cases	5,694	5,190	6,219	504	-525
All Referrals	11,936	11,358	12,295	578	-359

Source: CP4

- During the quarter ending 31 March 2005, there were 11,936 referrals for assessment by community occupational therapists, an increase of 578 (5%) from the previous quarter, but a decrease of 359 (3%) from the corresponding figure at 31 March 2004.

Figure B.1: Referrals according to Priority and Other Cases (Quarter Ending 31 March 2005)



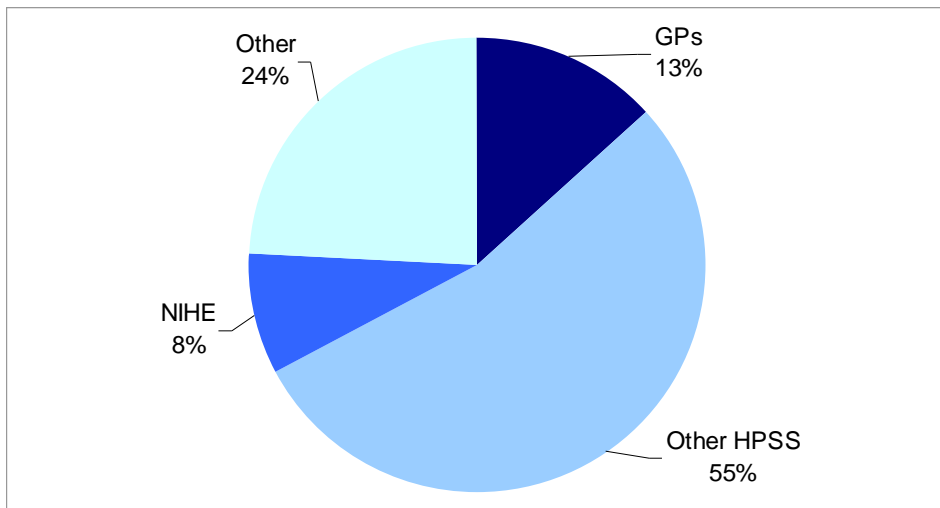
Source: CP4

- A slightly higher proportion of referrals for assessment by community occupational therapists were in respect of priority cases (52%) than those designated other cases (48%).

Section B: Referrals for Assessment

Source of Referrals for Assessment

Figure B.2: Source of Referrals for Assessment (Quarter Ending 31 March 2005)

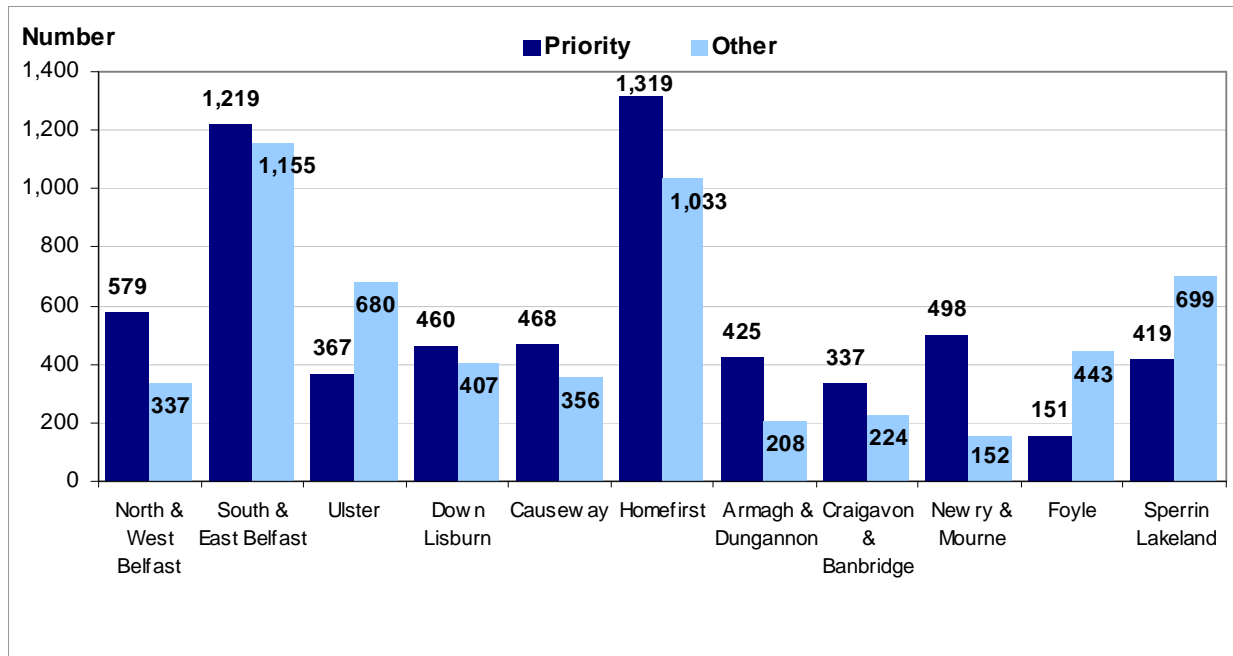


Source: CP4

- During the quarter ending 31 March 2005, over half (54%) of all referrals for assessment by community occupational therapists were from the HPSS other than GP's, 13% from GP's, 8% from NIHE, and 24% from other sources.

Section B: Referrals for Assessment

Figure B.3: Referrals for Assessment according to Priority and Other Cases by Trust (Quarter Ending 31 March 2005)



Source: CP4

- Homefirst (1,319) had the highest number of priority case referrals for assessment by occupational therapists, whilst Foyle (151) had the lowest. In terms of other case referrals for assessment, South & East Belfast (1,155) had the highest and Newry & Mourne (152) the lowest.

Section B: Referrals for Assessment

Number of Referrals for Assessment during Year

Table B.2 provides an analysis of the total number of referrals, and referrals in respect of priority and other cases.

Table B.2: Number of Referrals Received for Assessment by Quarter

	Year Ending			Change	
	31 March 2005	31 March 2004	31 March 2003	2004 - 2005	2003 - 2005
Priority Cases	24,809	24,220	23,063	589	1,746
Other Cases	22,602	21,780	22,340	822	262
All Referrals	47,411	46,000	45,403	1,411	2,008

Source: CP4

- During the year ending 31 March 2005, there were 47,411 referrals for assessment by community occupational therapists, 2,008 (4%) more than during the year ending 31 March 2003, and 1,411 (3%) more than during year ending 31 March 2004.
- Since 31 March 2003, the number of referrals for assessment designated as priority cases increased by 1,746 (8%).

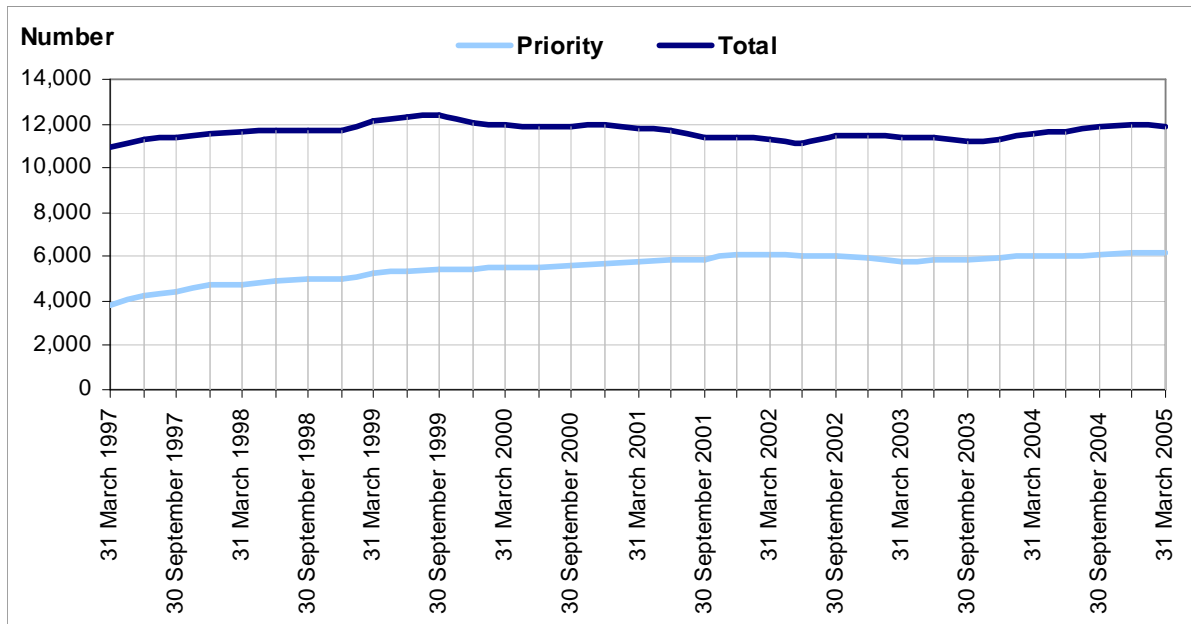
Section B: Referrals for Assessment

Referrals for Assessment Since 31 March 1997

The trends reported in this section are based on the average number of referrals for assessment for four quarters, i.e. data for 31 March 2005 is based on the average number of

referrals for the four quarters ending 31 March 2005 (31 March 2004, 30 June 2004, 30 September 2004, and 31 December 2004).

Figure B.4: Referrals for Assessment according to Priority and Other Cases (31 March 1997 - 31 March 2005)



Source: CP4

- Between 31 March 1997 and 31 March 2005, the average number of referrals for assessment increased by 9%, from 10,906 in 31 March 1997 to 11,853 31 March 2005.
- During this period, the average number of referrals for assessment designated as priority cases increased by 62%, from 3,823 in 31 March 1997 to 6,202 in 31 March 2005.

Section C: Assessments Commenced

Number of Assessments Commenced

Table C.1 provides an analysis of the number of assessments commenced by community occupational therapists,

according to whether these were in respect of priority cases or other cases.

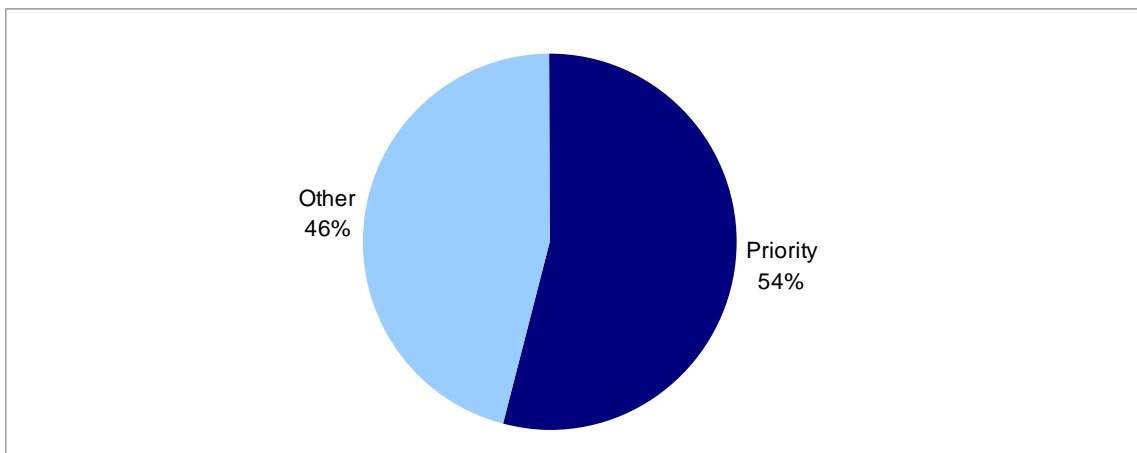
Table C.1: Number of Assessments Commenced by Quarter

	Quarter Ending:			Quarterly Change	Annual Change
	31 March 2005	31 December 2004	31 March 2004		
Priority Cases	5,317	5,782	5,074	-465	243
Other Cases	4,542	3,708	4,110	834	432
All Assessments Commenced	9,859	9,490	9,184	369	675

Source: CP4

- During the quarter ending 31 March 2005, 9,859 assessments were commenced by community occupational therapists, an increase of 4% (369) on the number commenced during the previous quarter, and 7% (675) more than the number commenced during the same quarter last year.
- During the quarter ending 31 March 2005, a higher proportion of assessments commenced were designated priority cases (54%) than other cases (46%).
- Between the quarters ending 31 December 2004 and 31 March 2005, the number of priority case assessments commenced decreased by 465 (8%), from 5,782 in 31 December 2004 to 5,317 in 31 March 2005, whilst the number of other case assessments commenced increased by 834 (22%), from 3,708 in 31 December 2004 to 4,542 in 31 March 2005.

Figure C.1: Assessments Commenced according to Priority and Other Cases (Quarter Ending 31 March 2005)



Source: CP4

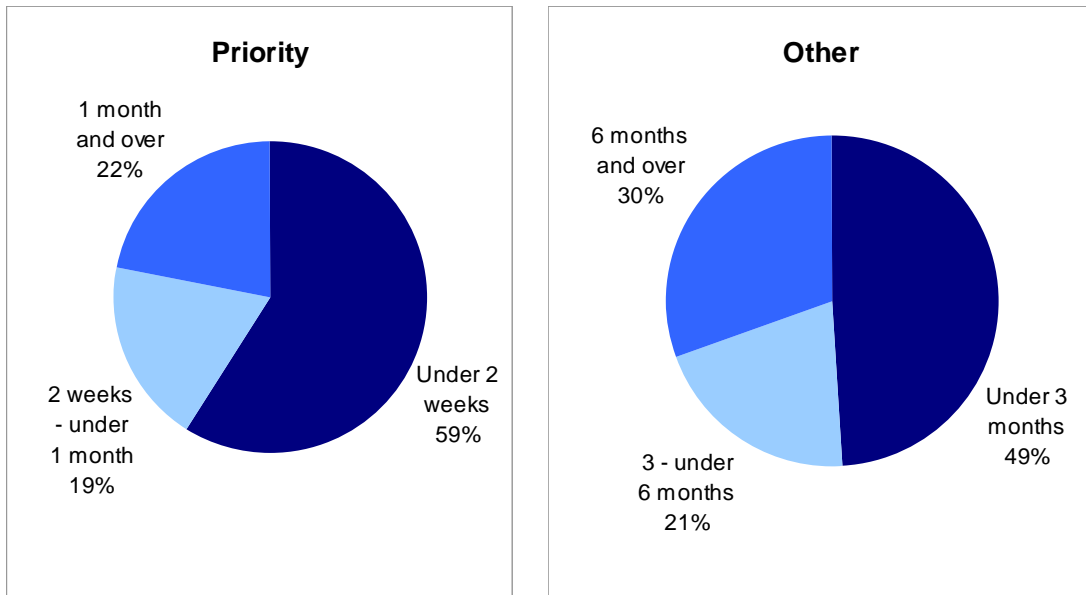
Section C: Assessments Commenced

Number of Assessments Commenced by Time from Referral (31 March 2005)

Figure C.2 provides an analysis of assessments commenced, according to length of time between referral and

start of assessment, for priority and other cases.

Figure C.2: Number of Assessments Commenced by Designation and Time from Referral (Quarter Ending 31 March 2005)



Source: CP4

- Almost 6 in 10 (59%) assessments in respect of priority cases met the Charter Standard by commencing within 2 weeks of the referral, 19% in 2 weeks to 1 month, and 22% in 1 month or more. 49% of assessments in respect of other cases met the Charter Standard by commencing within 3 months of the referral, 30% in 6 months or more, and 21% in 3 to 6 months.

Section C: Assessments Commenced

Tables C.2 (a and b) show the number of assessments commenced, by length of time from referral, for priority cases and other cases.

Table C.2 (a): Number of Assessments in Respect of Priority Cases Commenced by Quarter and Time from Referral

	Quarter Ending:			Quarterly Change	Annual Change
	31 March 2005	31 December 2004	31 March 2004		
Under 2 weeks	3,129	3,550	3,279	-421	-150
2 weeks - under 1 month	1,026	1,133	785	-107	241
1 month and over	1,162	1,099	1,010	63	152
All Priority Cases	5,317	5,782	5,074	-465	243

Source: CP4

Table C.2 (b): Number of Assessments in Respect of Other (Non-Priority) Cases Commenced by Quarter and Time from Referral

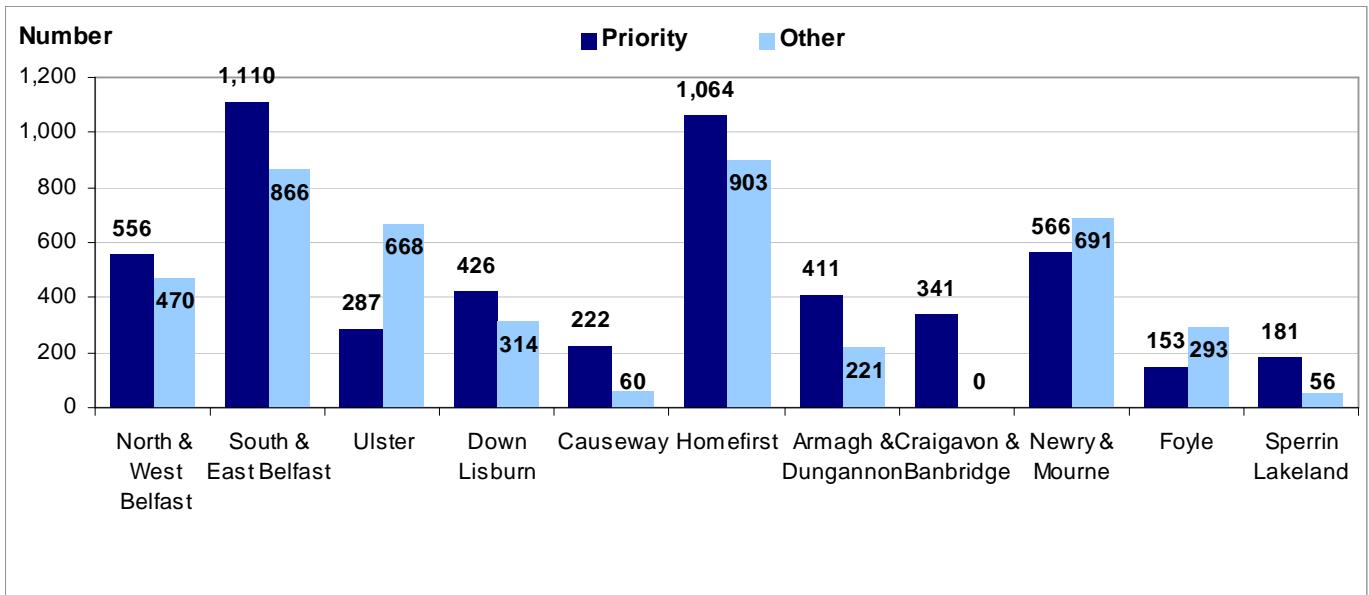
	Quarter Ending:			Quarterly Change	Annual Change
	31 March 2005	31 December 2004	31 March 2004		
Under 3 months	2,223	2,204	2,894	19	-671
3 months - under 6 months	937	434	384	503	553
6 months and over	1,382	1,070	832	312	550
All Other Cases	4,542	3,708	4,110	834	432

Source: CP4

Section C: Assessments Commenced

Number of Assessments Commenced by Trust

Figure C.3:- Number of Assessments Commenced by Designation and Trust (31 March 2005)



Source: CP4

- During the quarter ending 31 March 2005, South & East Belfast (1,110) had the highest number of assessments commenced in respect of priority cases, whilst Newry & Mourne (566) had the lowest.
- For the same period, Homefirst (903) had the highest number of assessments commenced in respect of other (non-priority) cases, whilst Craigavon & Banbridge (0) had the lowest.

Section C: Assessments Commenced

Table C.4 shows, for each Trust, the number of assessments commenced according to priority and other cases, and the number and percentage commenced within the Charter

Standard of two weeks for priority cases and three months for other cases. Please note that Craigavon & Banbridge operate differently, in that all cases are treated as priority cases.

Table C.4: Number of Assessments Commenced by Trust, Designation and Time from Referral (Quarter Ending 31 March 2005)

Trust	Priority Cases			Other Cases		
	Total Commenced	Number Commenced within 2 Weeks	Percentage Commenced within 2 Weeks	Total Commenced	Number Commenced within 3 Months	Percentage Commenced within 3 Months
North & West Belfast	556	265	48%	470	128	27%
South & East Belfast	1,110	808	73%	866	843	97%
Ulster	287	230	80%	668	315	47%
Down Lisburn	426	298	70%	314	126	40%
Causeway	222	89	40%	60	21	35%
Homefirst	1,064	622	58%	903	622	69%
Armagh & Dungannon	411	361	88%	221	83	38%
Craigavon & Banbridge	341	198	58%	0	0	-
Newry & Mourne	566	160	28%	691	33	5%
Foyle	153	50	33%	293	44	15%
Sperrin Lakeland	181	48	27%	56	8	14%
Northern Ireland	5,317	3,129	59%	4,542	2,223	49%

Source: CP4

- Armagh & Dungannon (88%) had the highest proportion of assessments commenced in respect of priority cases within 2 weeks, whilst Newry & Mourne (28%) had the lowest.
- For non-priority (other) cases, South & East Belfast (97%) had the highest proportion of assessments commenced within 3 months, whilst Sperrin Lakeland (14%) had the lowest.

Section C: Assessments Commenced

Number of Assessments Completed during Year

Table C.5 provides an analysis of the total number of assessments commenced, and assessments commenced in respect of priority and

other cases, for the year ending December 2004, including a comparison with the previous year.

Table C.5: Number of Assessments Commenced by Designation and Year

	Year Ending:			Change Since	Change Since
	31 March 2005	31 March 2004	31 March 2003	31 March 2004	31 March 2003
Priority Cases	22,808	22,280	20,294	528	2,514
Other Cases	15,713	15,024	14,798	689	915
All Assessments Commenced	38,521	37,304	35,092	1,217	3,429

Source: CP4

- During the year ending 31 March 2005, 38,521 assessments commenced, 10% (3,429) more than the number commenced during the year ending 31 March 2004, and 3% (1,217) more than the number commenced during year ending 31 March 2003.
- Of the 38,521 assessments commenced during this period, the majority (59%) were in respect of priority cases.

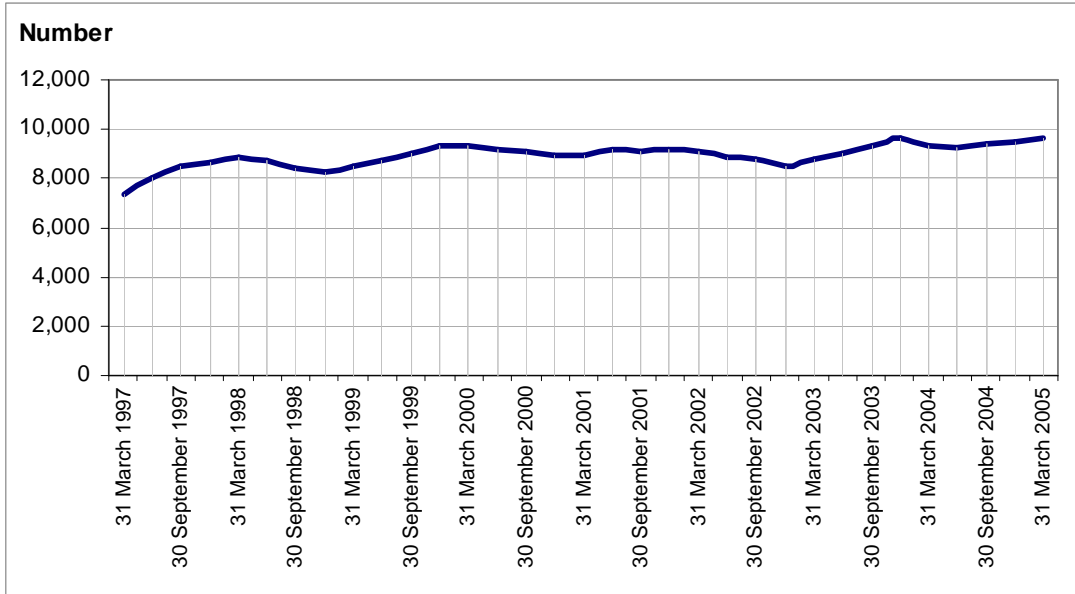
Section C: Assessments Commenced

Assessments Commenced Since 31 March 1997

The trends reported on in this section are based on the average number of referrals for assessment for the last four quarters, i.e. data for 31 December 2004 is based on the average number

of referrals for the four quarters up to and including 31 December 2004 (31 March 2004, 30 June 2004, 30 September 2004, and 31 December 2004).

Figure C.4: Assessments Commenced (31 March 1997 - 31 March 2005)

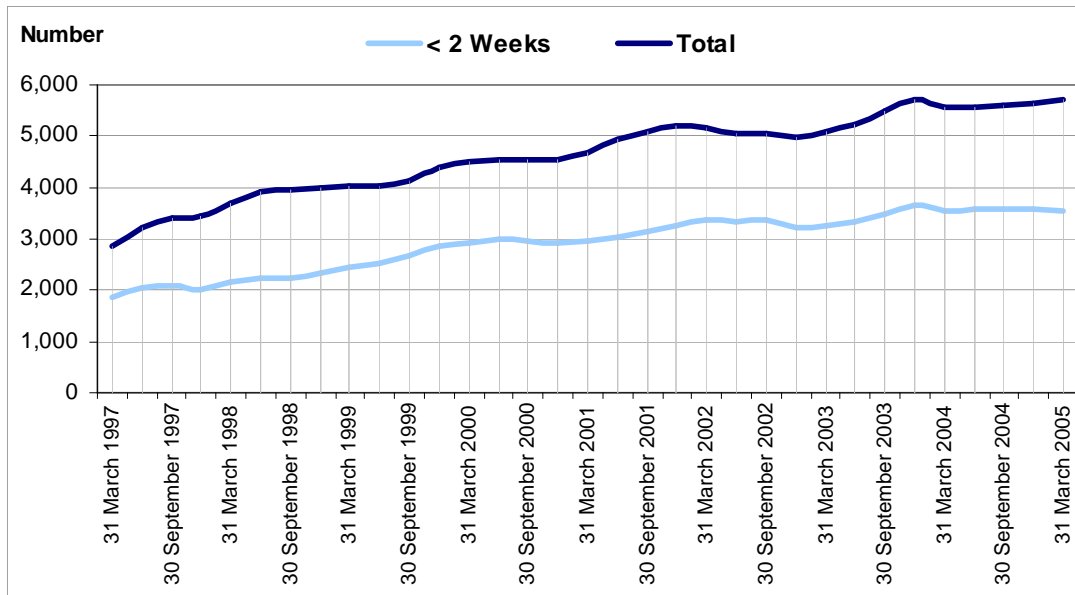


Source: CP4

- Between 31 March 1997 and 31 March 2005, the average number of assessments commenced has increased by 31%, from 7,364 to 9,630 respectively.

Section C: Assessments Commenced

Figure C.5: Assessments Commenced in Respect of Priority Cases (31 March 1997 – 31 March 2005)

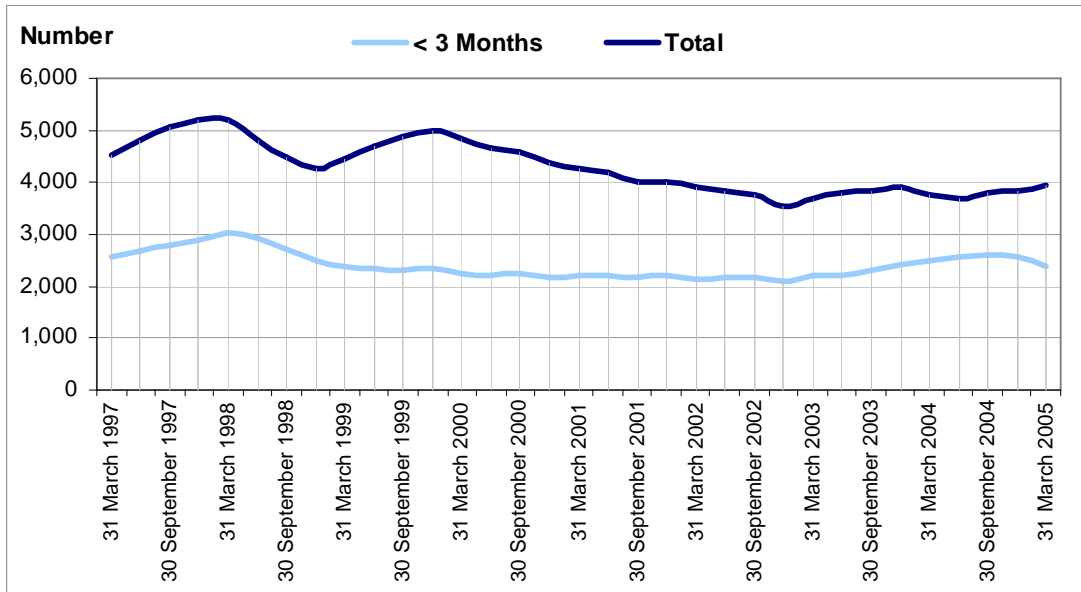


Source: CP4

- Since 31 March 1997, the average number of assessments commenced in respect of priority cases, has increased by 101%, from 2,840 in 31 March 1997 to 5,702 in 31 March 2005. The average number of assessments commenced within 2 weeks increased by 91%, from 1,853 in 31 March 1997 to 3,539 in 31 March 2005.

Section C: Assessments Commenced

Figure C.6: Assessments Commenced in Respect of Other Cases (31 March 1997 – 31 March 2005)



Source: CP4

- Since 31 March 1997, the average number of assessments commenced in respect of other cases decreased by 13%, from 4,524 at 31 March 1997 to 3,928 to 31 March 2005.
- During the same period, the average number of assessments commenced within 3 months of referral decreased by 6%, from 2,551 at 31 March 1997 to 2,401 at 31 March 2005.

Technical Notes

1. Occupational therapists treat people with physical and/or psychological illness or disability in order to enable them to reach their maximum level of function and independence in all aspects of life. They assess their physical, psychological and social functions and involve them in a structured programme of treatment designed to help overcome disability.
2. Referrals mean the total number of referrals to occupational therapists for assessment from all sources during the relevant quarter. Sources of referral may be general practitioners, other Health and Personal Social Services personnel such as community nurses or social workers, the Northern Ireland Housing Executive or others such as Education and Library Boards.
3. Referrals are split into Priority and Other cases. Priority cases are defined as those being discharged from hospital and at risk, those living alone and at risk, those living with a carer who is disabled or elderly, and those who are terminally ill.
4. Assessments by community occupational therapists normally take place to determine the type of housing adaptation (which may be either a major or minor adaptation) or equipment which the service user needs to help them to reach their maximum level of function or independence. It should be noted that not all assessments result in a recommendation for a housing adaptation or item of equipment. An assessment for housing adaptation can only be designated as such when the assessment is completed.
5. Time waiting for assessment refers to the time from receipt of the referral, regardless of whether the referral is in writing or not.
6. Commencement of assessment refers to the time of the first visit to the service user's home.
7. The Charter Standard states that, for priority cases, assessment should commence within two weeks of receipt of referral and, for other cases, assessment should commence within three months of receipt of referral.
8. The information in this publication relates to persons aged 19 and over in the Elderly Care and Physical & Sensory Disability Programmes of Care. Programmes of Care are divisions of health care, into which activity and finance data are assigned, so as to provide a common management framework. They are used to plan and monitor the health service by allowing performance to be measured, targets set and services managed on a comparative basis. There are nine Programmes of Care in total.
9. The source of the information is the quarterly return CP4.
10. Figures relating to the quarter ending 30 June 2005 are expected to be released on the 11th November 2005.
11. Some of the data may be provisional and subject to revision in subsequent quarters.

Additional Information

Further information on Assessments by Occupational Therapists in Northern Ireland are available from:

Kieran Taggart

Community Information Branch
Department of Health, Social Services, and Public Safety
Annex 2
Castle Buildings
Stormont Estate
BT4 3SQ



(028) 90 522493

FAX: (028) 90 523288

EMAIL: Kieran.taggart@dhsspsni.gov.uk

Additional Copies of this statistical bulletin, are available by contacting:

Nichola Kane

Community Information Branch
Department of Health, Social Services, and Public Safety
Annex 2
Castle Buildings
Stormont Estate
BT4 3SQ



(028) 90 522960

FAX: (028) 90 523288

EMAIL: Nicola.Kane@dhsspsni.gov.uk

Alternatively, this statistical bulletin and other statistical bulletins published by Community Information Branch (CIB) are available to download free from the internet at:

Internet address: <http://www.dhsspsni.gov.uk/hpss/statistics>