



Assessments by Community Occupational Therapists in Northern Ireland - 31 December 2006

This statistical bulletin presents information on assessments by Occupational Therapists in Northern Ireland for the quarter ending 31 December 2006. It monitors information on referrals for assessment, waiting times for assessment, and assessments commenced during the quarter. Information is collected using the quarterly CP4 return.

25 May 2007

Theme:

**Assessments by
Community Occupational
Therapists in Northern
Ireland**

Issued by:

Community Information
Branch,
Information & Analysis
Directorate,
Department of Health,
Social Services & Public
Safety,
Stormont Estate,
Belfast, BT4 3SQ

Contact Person:

Nichola Kane
(028 905 22960)

Email

Nichola.Kane@dhsspsni.gov.uk

Internet

http://www.dhsspsni.gov.uk/index/stats_research/stats-cib/stats-cib_pubs.htm

Main Findings

Persons Waiting for Assessment

- At 31 December 2006, 7,847 people were waiting for assessment by community occupational therapists, a decrease of 818 (9%) from the number waiting at the end of the previous quarter, and 954 (11%) less than the number waiting at the end of the corresponding quarter last year.
- Of those waiting for assessment by community occupational therapists at 31 December 2006, 1,730 (22%) were priority cases and 6,117 (78%) were other cases.
- Since 30 September 2006, the number of priority cases waiting for assessment decreased by 308 (15%), and the number of other (non-priority) cases decreased by 510 (8%).
- Compared to 31 December 2005, the number of priority cases waiting assessment decreased by 821 (32%), whilst the number of other cases decreased by 133 (2%).
- Almost one quarter (24%) of priority cases and 38% of other cases had been waiting for assessment for 6 months or more at 31 December 2006.
- Compared to 31 December 2005, the proportion of priority cases waiting 6 months or more for assessment decreased by 10 percentage points.
- Since 30 June 1997, the number of people waiting for assessment has increased by 8%, from 7,678 at 30 June 1997 to 8,279 at 31 December 2006.

Referrals for Assessment

- During the quarter ending 31 December 2006, there were 12,029 referrals for assessment by community occupational therapists, a decrease of 95 (1%) from the previous quarter, and 792 (7%) more than the corresponding figure at 31 December 2005.
- During the quarter ending 31 December 2006, 14% of all referrals for assessment by community occupational therapists were from GP's, 5% from NIHE, 55% from the other HPSS sources, and 26% from other sources.
- Between 30 June 1997 and 31 December 2006, the average number of referrals for assessment increased by 4%, from 11,255 in 30 June 1997 to 11,710 at 31 December 2006.

Assessments Commenced

- During the quarter ending 31 December 2006, 9,807 assessments were commenced by community occupational therapists, an increase of 5% (482) on the number commenced during the previous quarter, and 9% (825) more than the number commenced during the same quarter last year.
- Over half (53%) of assessments in respect of priority cases met the Charter Standard by commencing within 2 weeks of the referral and 16% in 2 weeks to 1 month. However, almost one third (31%) took longer than 1 month.
- Over three fifths (62%) of assessments in respect of other cases met the Charter Standard by commencing within 3 months of the referral and 15% in 3 to 6 months. However, almost one quarter (23%) took longer than 6 months.
- Between 30 June 1997 and 31 December 2006, the average number of assessments commenced per quarter has increased by 19%, from 8,036 to 9,551.

Contents

	Page
Section A: Persons Waiting Assessment	1
Numbers of People Waiting Assessment.....	1
Length of Time Waiting.....	3
Number Waiting by Trust.....	5
Trends.....	7
Section B: Referrals	9
Number of Referrals for Assessment.....	9
Source of Referral.....	10
Number of Referrals during Year.....	12
Trends.....	13
Section C: Assessments Commenced	14
Number of Assessments Commenced.....	14
Length of Time from Referral.....	15
Assessments Commenced by Trust.....	17
Number of Assessments Commenced during Year.....	18
Trends.....	20
Appendices	
Appendix 1 : Waits for Assessments.....	23
Appendix 2 : Referrals for Assessment.....	24
Appendix 3 : Assessments Commenced.....	25
Technical Notes.....	26
Additional Information.....	27

Section A: Persons Waiting for Assessment

Number of Persons Waiting for Assessment

Table A.1 provides an analysis of the number of persons waiting for assessment by community

occupational therapists, according to whether these were priority cases or other cases.

Table A.1: Persons Waiting for Assessment

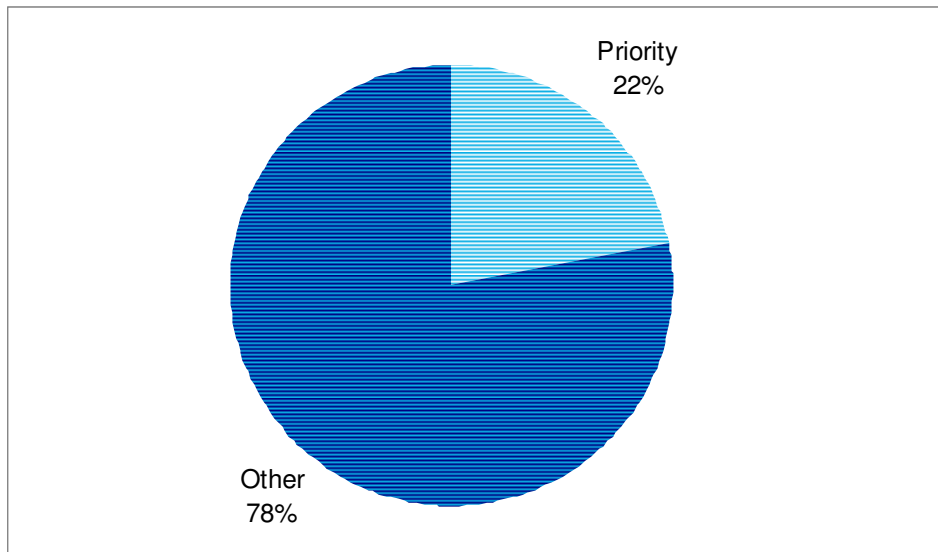
	Quarter Ending:			Quarterly Change	Annual Change
	31 December 2006	30 September 2006	31 December 2005		
Priority Cases	1,730	2,038	2,551	-308	-821
Other Cases	6,117	6,627	6,250	-510	-133
All Persons Waiting	7,847	8,665	8,801	-818	-954

Source: CP4

- At 31 December 2006, 7,847 people were waiting for assessment by community occupational therapists, a decrease of 818 (9%) from the number waiting at the end of the previous quarter, and 954 (11%) less than the number waiting at the end of the corresponding quarter last year.
- Of those waiting for assessment by community occupational therapists at 31 December 2006, 1,730 (22%) were priority cases and 6,117 (78%) were other cases.
- Since 30 September 2006, the number of priority cases waiting for assessment decreased by 308 (15%), and the number of other (non-priority) cases decreased by 510 (8%).
- Compared to 31 December 2005, the number of priority cases waiting assessment decreased by 821 (32%), whilst the number of other cases decreased by 133 (2%).

Section A: Persons Waiting for Assessment

Figure A.1: Persons Waiting for Assessment by Community Occupational Therapists, according to Priority and Other Cases (Quarter Ending 31 December 2006)



Source: CP4

Section A: Persons Waiting for Assessment

Persons Waiting for Assessment by Length of Time Waiting

Table A.2 shows the number of persons waiting for assessment, by length of time waiting, for the current quarter, previous quarter and

corresponding quarter last year. This is shown for priority cases, other cases and all cases.

Table A.2 (a): Priority Cases Waiting for Assessment by Time Waiting and Quarter

	Quarter Ending:			Quarterly Change	Annual Change
	31 December 2006	30 September 2006	31 December 2005		
Under 1 month	465	652	515	-187	-50
1 month - under 3 months	547	532	644	15	-97
3 months - under 6 months	298	342	533	-44	-235
6 months and over	420	512	859	-92	-439
All Priority Cases	1,730	2,038	2,551	-308	-821

Source: CP4

Table A.2 (b): Other Cases Waiting for Assessment by Time Waiting and Quarter

	Quarter Ending:			Quarterly Change	Annual Change
	31 December 2006	30 September 2006	31 December 2005		
Under 1 month	904	1,199	779	-295	125
1 month - under 3 months	1,534	1,476	1,494	58	40
3 months - under 6 months	1,356	1,582	1,391	-226	-35
6 months and over	2,323	2,370	2,586	-47	-263
All Other Cases	6,117	6,627	6,250	-510	-133

Source: CP4

Section A: Persons Waiting for Assessment

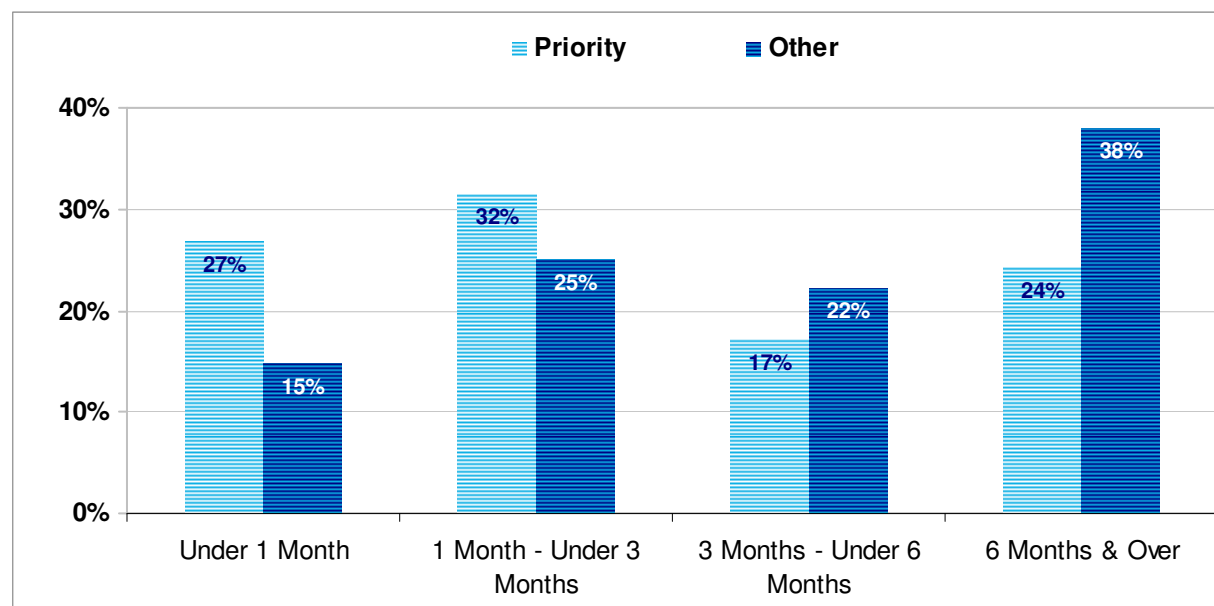
Table A.2 (c): All Cases Waiting for Assessment by Time Waiting and Quarter

	Quarter Ending:			Quarterly Change	Annual Change
	31 December 2006	30 September 2006	31 December 2005		
Under 1 month	1,369	1,851	1,294	-482	75
1 month - under 3 months	2,081	2,008	2,138	73	-57
3 months - under 6 months	1,654	1,924	1,924	-270	-270
6 months and over	2,743	2,882	3,445	-139	-702
All Cases	7,847	8,665	8,801	-818	-954

Source: CP4

- At 31 December 2006, over one third (35%) of all people waiting for assessment had been waiting for 6 months or more, similar to the previous quarter (33%) and slightly less than at 31 December 2005 (39%).
- Since the end of the previous quarter, the number of people waiting for assessment decreased by 818, with the most significant decrease in those waiting less than 1 month for assessment (482).

Figure A.2: Persons Waiting for Assessment by Length of Time and according to Priority and Other Cases (Quarter Ending 31 December 2006)



Source: CP4

- Almost one quarter (24%) of priority cases and 38% of other cases had been waiting for assessment for 6 months or more at 31 December 2006.
- Compared to 31 December 2005, the proportion of priority cases waiting 6 months or more for assessment decreased by 10 percentage points.

Section A: Persons Waiting for Assessment

Persons Waiting for Assessment by HSS Trust

Table A.3 shows, for each Trust, the number of persons waiting according to priority and other cases, and the number and percentage waiting for six

months or more. Information for the five new Health & Social Care Trusts is presented in Appendix 1 (p.23).

Table A.3: Persons Waiting for Assessment by HSS Trust at 31 December 2006

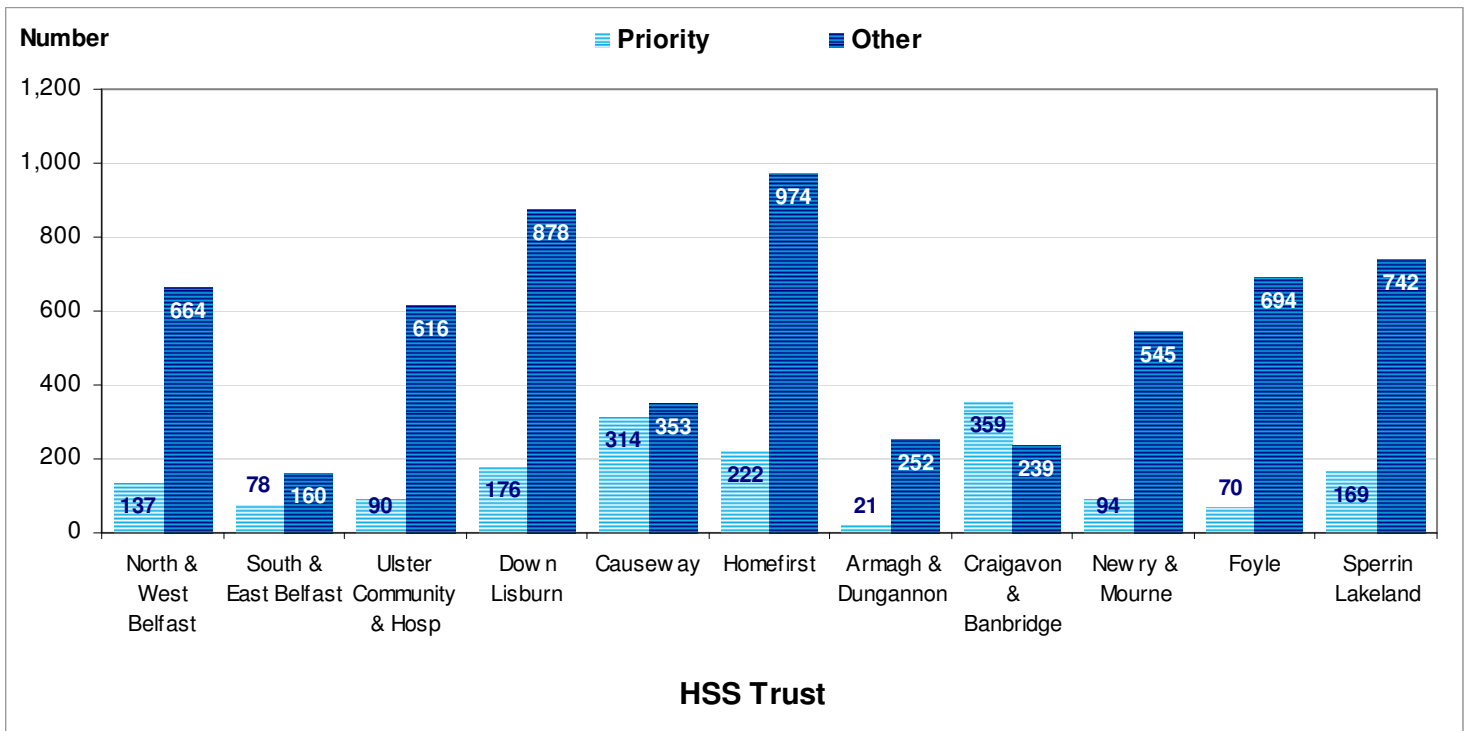
Trust	Priority Cases			Other Cases		
	Total Waiting	Number Waiting 6 Months or More	Percentage Waiting 6 Months or More	Total Waiting	Number Waiting 6 Months or More	Percentage Waiting 6 Months or More
North & West Belfast	137	0	0%	664	25	4%
South & East Belfast	78	0	0%	160	1	1%
Ulster Community & Hosp	90	4	4%	616	100	16%
Down Lisburn	176	31	18%	878	448	51%
Causeway	314	114	36%	353	218	62%
Homefirst	222	56	25%	974	204	21%
Armagh & Dungannon	21	0	0%	252	50	20%
Craigavon & Banbridge	359	169	47%	239	112	47%
Newry & Mourne	94	40	43%	545	374	69%
Foyle	70	6	9%	694	251	36%
Sperrin Lakeland	169	0	0%	742	540	73%
Northern Ireland	1,730	420	24%	6,117	2,323	38%

Source: CP4

- Across HSS Trusts, Craigavon & Banbridge Trust had the highest number of people waiting for assessment designated priority (359) and Homefirst had the highest number waiting assessment for other cases (974).
- At 31 December 2006, Craigavon & Banbridge had the highest proportion of priority cases (47%) waiting 6 months or more for assessment, and Newry & Mourne had the highest proportion of other cases (69%) waiting 6 months or more for assessment.

Section A: Persons Waiting for Assessment

Figure A.3: Persons Waiting for Assessment by Community Occupational Therapists by HSS Trust and according to Priority and Other Cases (Quarter Ending 31 December 2006)



Source: CP4

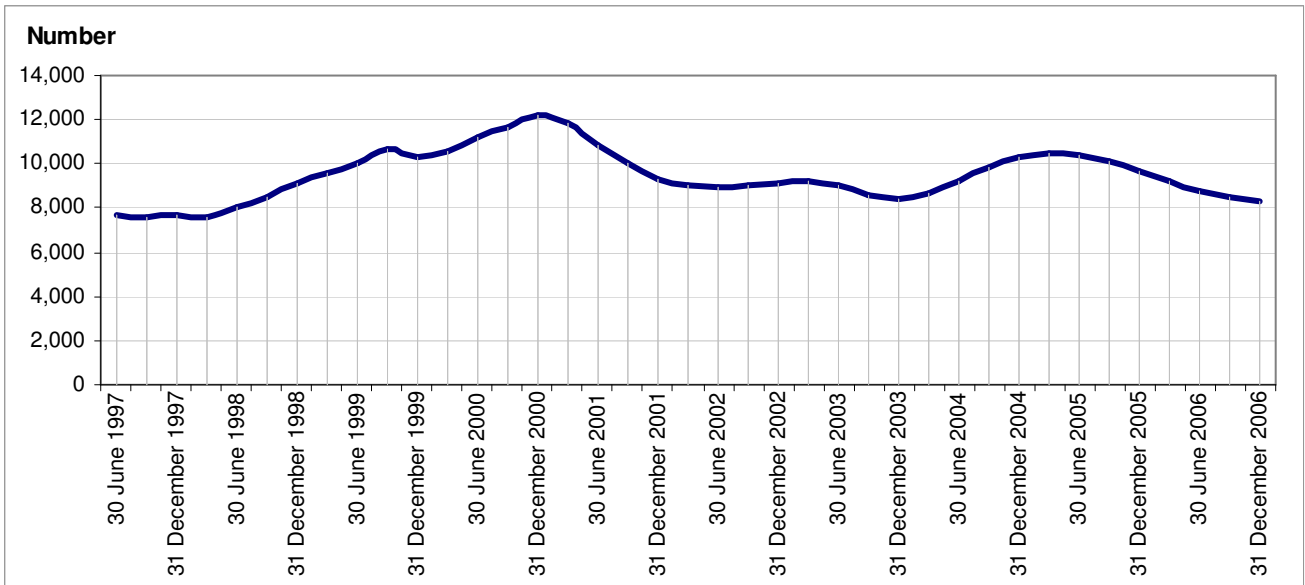
Section A: Persons Waiting for Assessment

Persons Waiting for Assessment Since 30 June 1997

The trends described in this section are based on the averages of figures for four quarters. For example, the figure for 31 December 2006 is based

on the average of the figures for the four quarters ending 31 December 2006.

Figure A.4: All Persons Waiting for Assessment by Community Occupational Therapists (30 June 1997 – 31 December 2006)

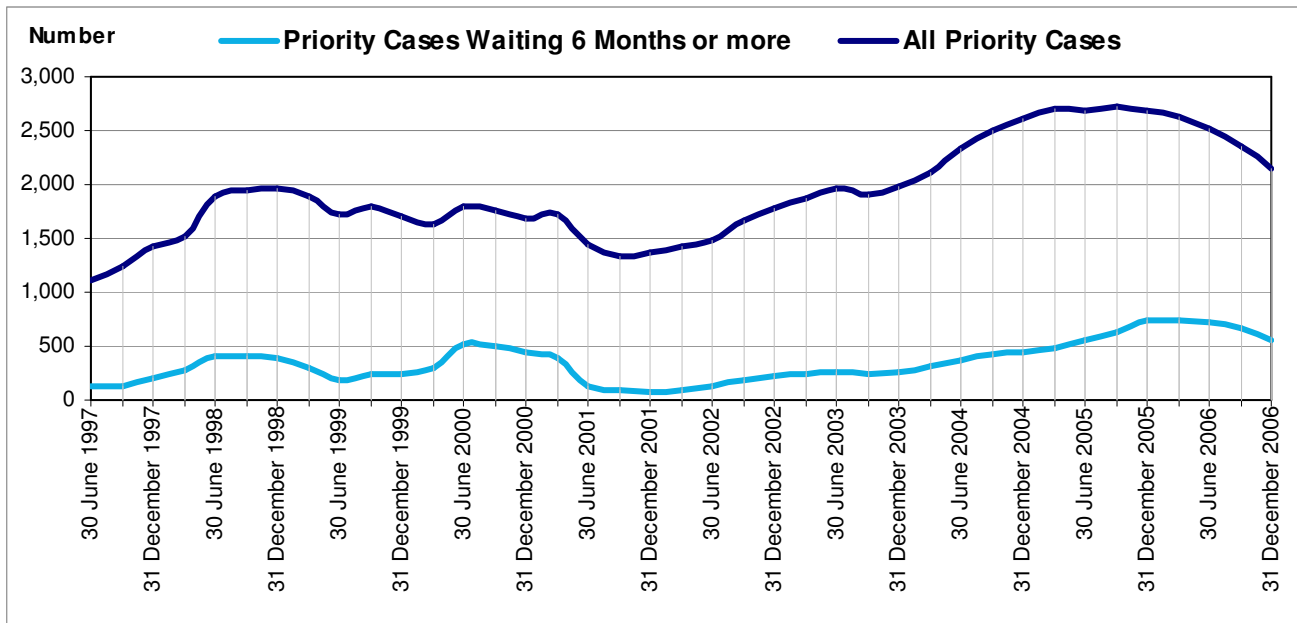


Source: CP4

- Since 30 June 1997, the number of people waiting for assessment has increased by 8%, from 7,678 at 30 June 1997 to 8,279 at 31 December 2006.
- Between 30 June 1997 and 31 December 2006, the highest average number of people waiting for assessment was 12,232 at 31 December 2000, whilst the lowest average number of people waiting for assessment was 7,586 at 31 March 1998.

Section A: Persons Waiting for Assessment

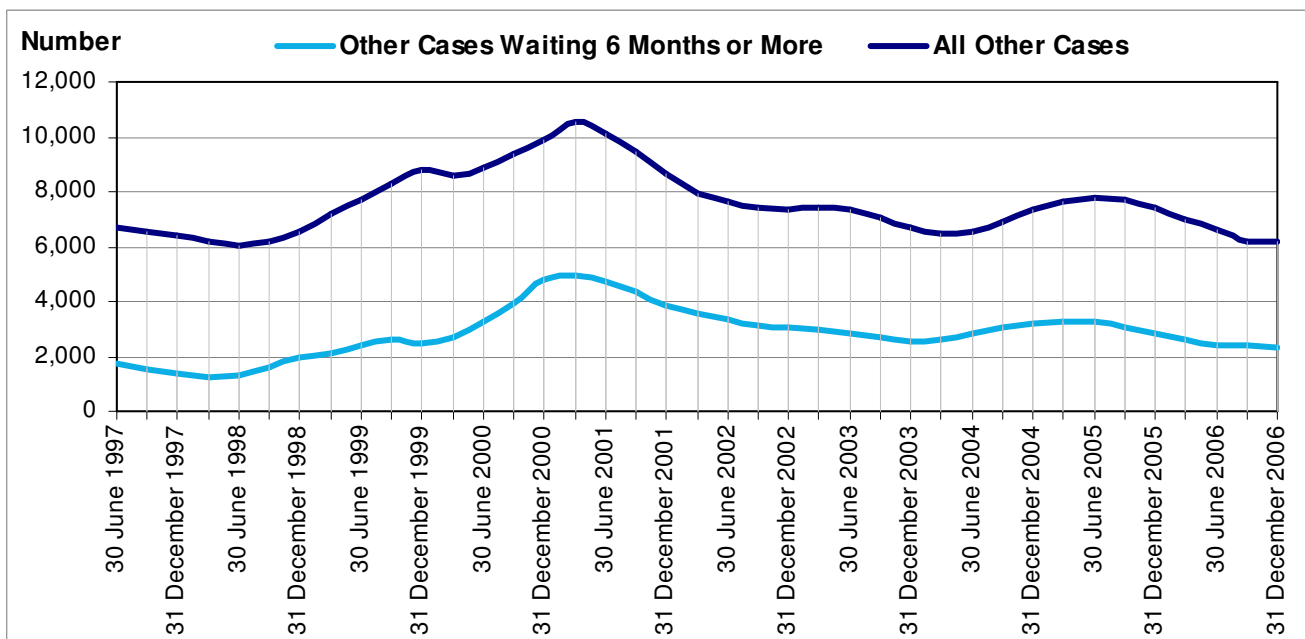
Figure A.5: Priority Cases Waiting for Assessment by Community Occupational Therapists (30 June 1997 – 31 December 2006)



Source: CP4

- The number of priority cases waiting 6 months or more, increased steadily between 30 September 2001 and 31 December 2005; although, it has decrease slightly since this time.

Figure A.6: Other Cases Waiting for Assessment by Community Occupational Therapists (30 June 1997 - 31 December 2006)



Source: CP4

Section B: Referrals for Assessment

Number of Referrals for Assessment

An analysis of the number of referrals for assessment by community occupational therapists, according to whether these were in respect of

priority cases or other cases, for the quarter ending 31 December 2006, is shown in Table B.1.

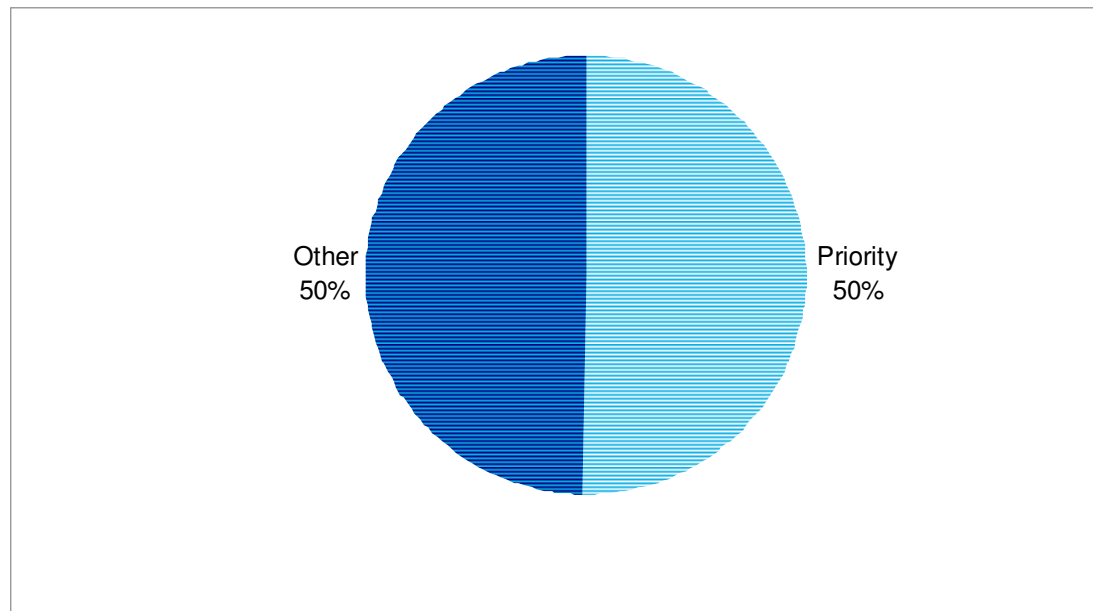
Table B.1: Number of Referrals Received for Assessment by Quarter

	Quarter Ending:			Quarterly Change	Annual Change
	31 December 2006	30 September 2006	31 December 2005		
Priority Cases	6,033	6,266	5,808	-233	225
Other Cases	5,996	5,858	5,429	138	567
All Referrals	12,029	12,124	11,237	-95	792

Source: CP4

- During the quarter ending 31 December 2006, there were 12,029 referrals for assessment by community occupational therapists, a decrease of 95 (1%) from the previous quarter, and 792 (7%) more than the corresponding figure at 31 December 2005.

Figure B.1: Referrals according to Priority and Other Cases (Quarter Ending 31 December 2006)

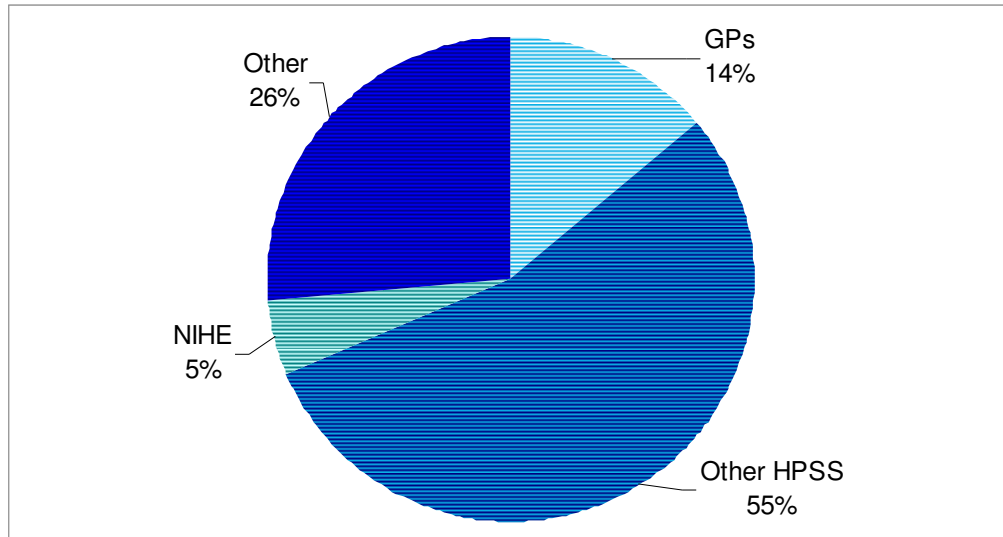


Source: CP4

Section B: Referrals for Assessment

Source of Referrals for Assessment

Figure B.2: Source of Referrals for Assessment (Quarter Ending 31 December 2006)

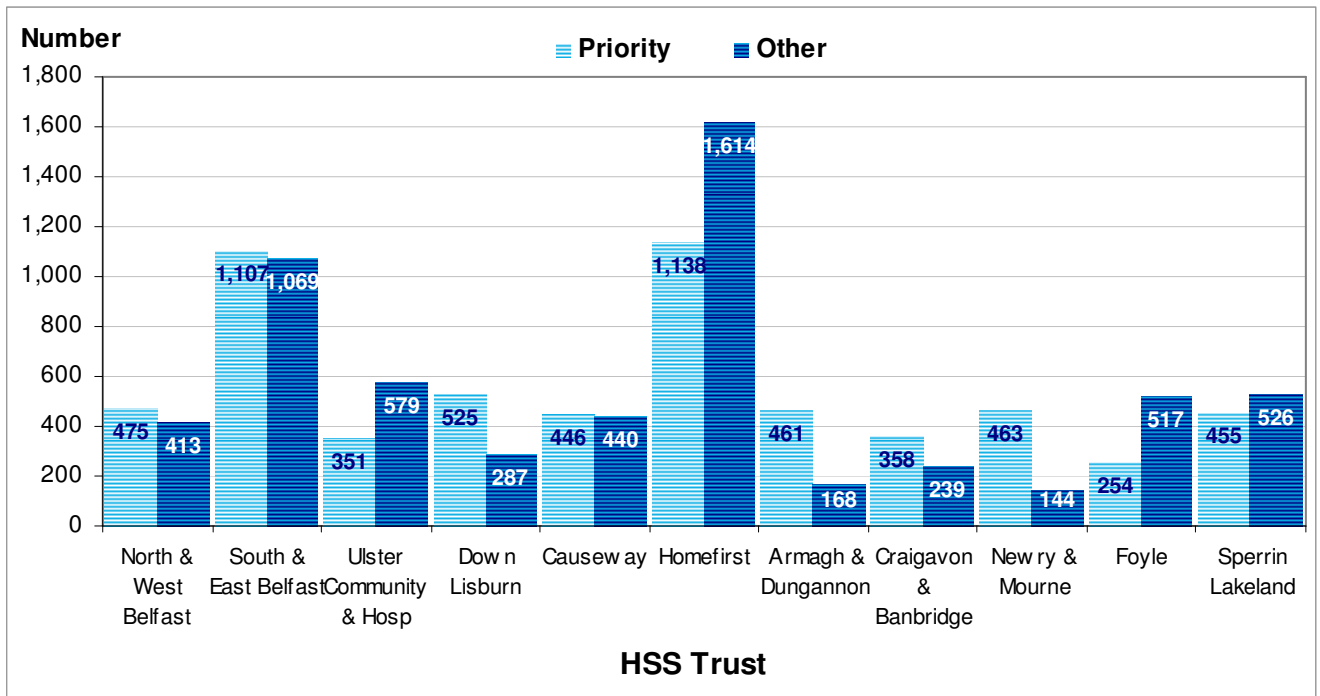


Source: CP4

- During the quarter ending 31 December 2006, 14% of all referrals for assessment by community occupational therapists were from GP's, 5% from NIHE, 55% from the other HPSS sources, and 26% from other sources.

Section B: Referrals for Assessment

Figure B.3: Referrals for Assessment according to Priority and Other Cases by HSS Trust (Quarter Ending 31 December 2006)



Source: CP4

- Homefirst and South & East Belfast HSS Trusts (1,138 and 1,107 respectively) had the highest number of priority case referrals for assessment by occupational therapists, whilst Foyle (254) had the lowest.
- In terms of other case referrals for assessment, Homefirst (1,614) had the highest and Newry & Mourne (144) the lowest.

¹ Information for the five new Health & Social Care Trusts is presented in Appendix 2.

Section B: Referrals for Assessment

Number of Referrals for Assessment during Year

Table B.2 provides an analysis of the total number of referrals, and referrals in respect of priority and other cases.

Table B.2: Number of Referrals Received for Assessment by Quarter

	Year Ending			Change	
	31 December 2006	31 December 2005	31 December 2004	2005 - 2006	2004 - 2006
Priority Cases	24,236	24,021	24,655	215	-419
Other Cases	22,603	23,281	23,138	-678	-535
All Referrals	46,839	47,302	47,793	-463	-954

Source: CP4

- During the year ending 31 December 2006, there were 46,839 referrals for assessment by community occupational therapists, 463 less than during year ending 31 December 2005, and 954 less than during the year ending 31 December 2004.
- Since 31 December 2004, the number of referrals for assessment designated as priority cases decreased by 419.

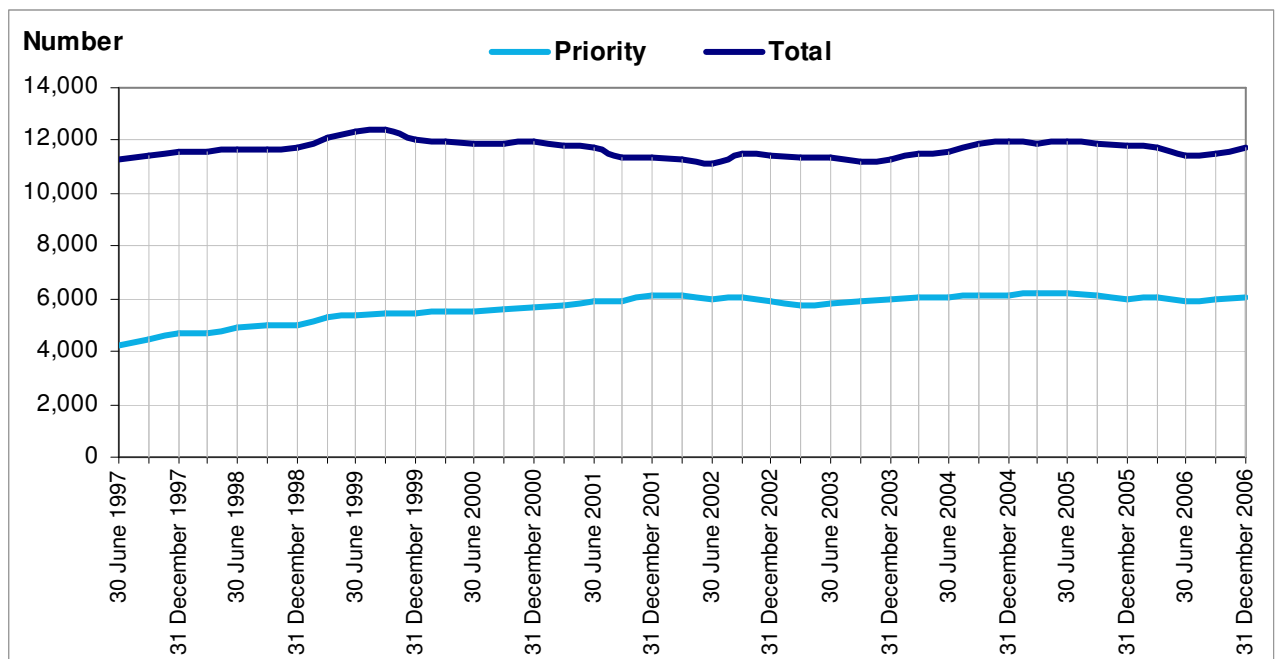
Section B: Referrals for Assessment

Referrals for Assessment Since 30 June 1997

The trends reported in this section are based on the average number of referrals for assessment for four quarters, i.e. data for 31 March 2005 is based on the average number of

referrals for the four quarters ending 31 March 2005 (31 March 2004, 30 June 2004, 30 September 2004, and 31 December 2004).

Figure B.4: Referrals for Assessment according to Priority and Other Cases (30 June 1997 - 30 September 2006)



Source: CP4

- Between 30 June 1997 and 31 December 2006, the average number of referrals for assessment increased by 4%, from 11,255 in 30 June 1997 to 11,710 at 31 December 2006.
- During this period, the average number of referrals for assessment designated as priority cases increased by 44%, from 4,215 in 30 June 1997 to 6,059 in 31 December 2006.

Section C: Assessments Commenced

Number of Assessments Commenced

Table C.1 provides an analysis of the number of assessments commenced by community occupational therapists,

according to whether these were in respect of priority cases or other cases.

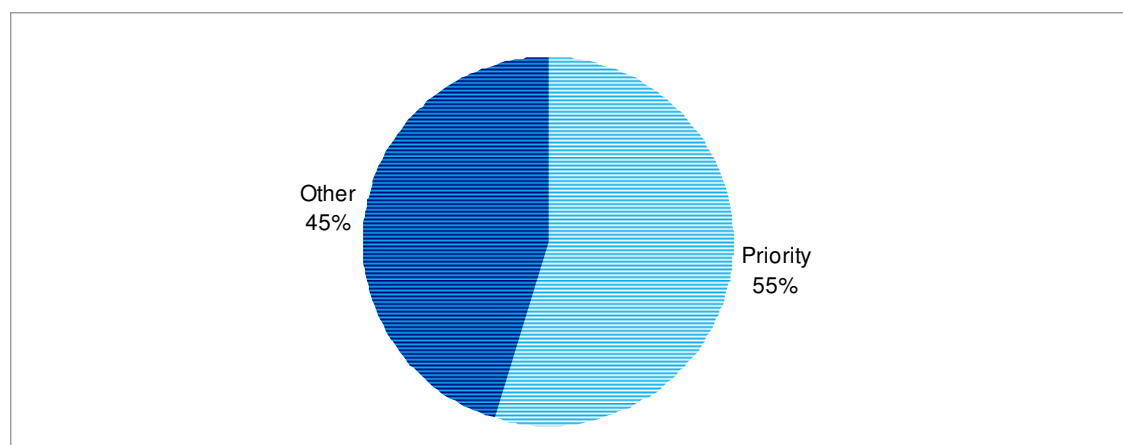
Table C.1: Number of Assessments Commenced by Quarter

	Quarter Ending:			Quarterly Change	Annual Change
	31 December 2006	30 September 2006	31 December 2005		
Priority Cases	5,360	5,615	5,216	-255	144
Other Cases	4,447	3,710	3,766	737	681
All Assessments Commenced	9,807	9,325	8,982	482	825

Source: CP4

- During the quarter ending 31 December 2006, 9,807 assessments were commenced by community occupational therapists, an increase of 5% (482) on the number commenced during the previous quarter, and 9% (825) more than the number commenced during the same quarter last year.
- During the quarter ending 31 December 2006, a higher proportion of assessments commenced were designated priority cases (55%) than other cases (45%).
- Between the quarters ending 30 September 2006 and 31 December 2006, the number of priority case assessments commenced decreased by 255 (5%), from 5,615 in 30 September 2006 to 5,360 in 31 December 2006, but the number of other case assessments commenced increased by 737 (20%), from 3,710 in 30 September 2006 to 4,447 in 31 December 2006.

Figure C.1: Assessments Commenced according to Priority and Other Cases (Quarter Ending 31 December 2006)



Source: CP4

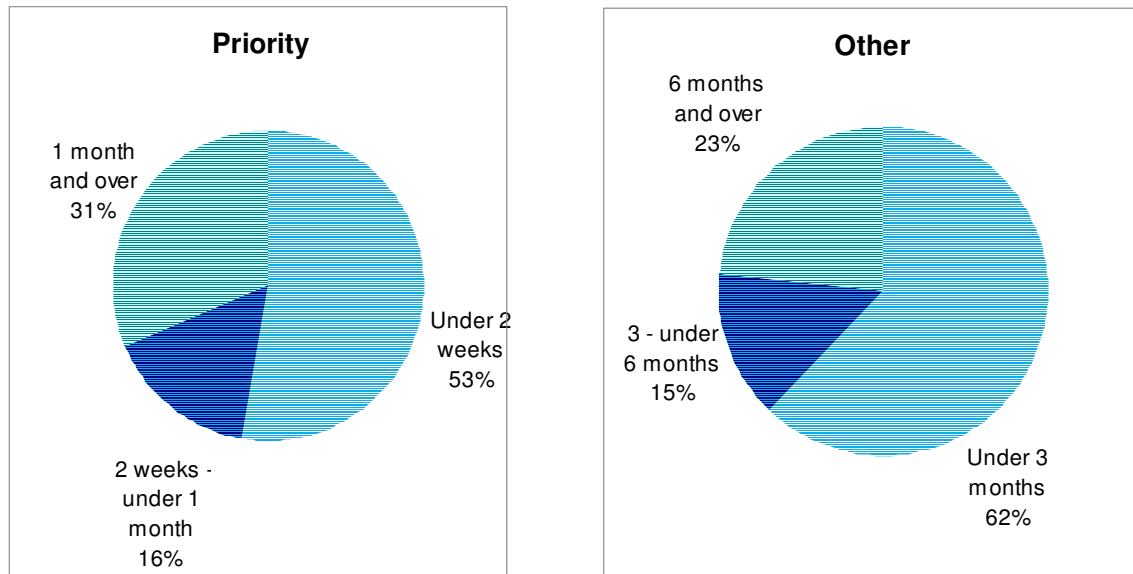
Section C: Assessments Commenced

Number of Assessments Commenced by Time from Referral (31 December 2006)

Figure C.2 provides an analysis of assessments commenced, according to length of time between referral and

start of assessment, for priority and other cases.

Figure C.2: Number of Assessments Commenced by Designation and Time from Referral (Quarter Ending 31 December 2006)



Source: CP4

- Over half (53%) of assessments in respect of priority cases met the Charter Standard by commencing within 2 weeks of the referral and 16% in 2 weeks to 1 month. However, almost one third (31%) took longer than 1 month.
- Over three fifths (62%) of assessments in respect of other cases met the Charter Standard by commencing within 3 months of the referral and 15% in 3 to 6 months. However, almost one quarter (23%) took longer than 6 months.

Section C: Assessments Commenced

Tables C.2 (a and b) show the number of assessments commenced, by length

of time from referral, for priority cases and other cases.

Table C.2 (a): Number of Assessments in Respect of Priority Cases Commenced by Quarter and Time from Referral

	Quarter Ending:			Quarterly Change	Annual Change
	31 December 2006	30 September 2006	31 December 2005		
Under 2 weeks	2,833	2,792	2,958	41	-125
2 weeks - under 1 month	846	942	948	-96	-102
1 month and over	1,681	1,881	1,310	-200	371
All Priority Cases	5,360	5,615	5,216	-255	144

Source: CP4

Table C.2 (b): Number of Assessments in Respect of Other (Non-Priority) Cases Commenced by Quarter and Time from Referral

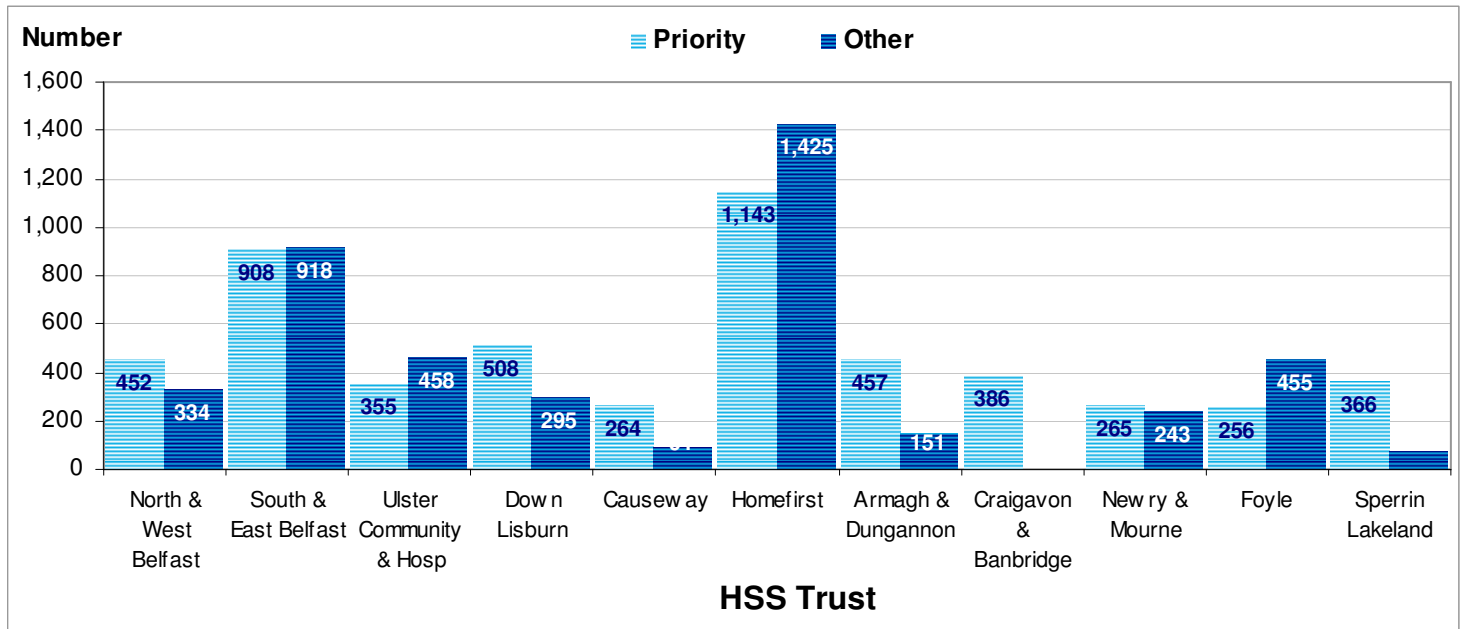
	Quarter Ending:			Quarterly Change	Annual Change
	31 December 2006	30 September 2006	31 December 2005		
Under 3 months	2,768	2,488	2,334	280	434
3 months - under 6 months	647	520	505	127	142
6 months and over	1,032	702	927	330	105
All Other Cases	4,447	3,710	3,766	737	681

Source: CP4

Section C: Assessments Commenced

Number of Assessments Commenced by HSS Trust

Figure C.3:- Number of Assessments Commenced by Designation and HSS Trust (31 December 2006)



Source: CP4

- During the quarter ending 31 December 2006, Homefirst (1,143) had the highest number of assessments commenced in respect of priority cases, whilst Foyle (256) had the lowest.
- For the same period, Homefirst (1,425) had the highest number of assessments commenced in respect of other (non-priority) cases.

¹ Information for the five new Health & Social Care Trusts is presented in Appendix 3.

Section C: Assessments Commenced

Table C.4 shows, for each Trust, the number of assessments commenced according to priority and other cases, and the number and percentage commenced within the Charter Standard of two weeks for priority

cases and three months for other cases. Information is presented in Appendix 3 to show assessments commenced in the five new Health & Social Care Trusts..

Table C.4: Number of Assessments Commenced by HSS Trust, Designation and Time from Referral (Quarter Ending 31 December 2006)

Trust	Priority Cases			Other Cases		
	Total Commenced	Number Commenced within 2 Weeks	Percentage Commenced within 2 Weeks	Total Commenced	Number Commenced within 3 Months	Percentage Commenced within 3 Months
North & West Belfast	452	199	44%	334	86	26%
South & East Belfast	908	554	61%	918	791	86%
Ulster Community & Hosp	355	188	53%	458	347	76%
Down Lisburn	508	239	47%	295	46	16%
Causeway	264	92	35%	91	15	16%
Homefirst	1,143	704	62%	1,425	1,251	88%
Armagh & Dungannon	457	390	85%	151	53	35%
Craigavon & Banbridge	386	224	58%	0	0	-
Newry & Mourne	265	50	19%	243	38	16%
Foyle	256	101	39%	455	128	28%
Sperrin Lakeland	366	92	25%	77	13	17%
Northern Ireland	5,360	2,833	53%	4,447	2,768	62%

Source: CP4

- In respect of priority cases the proportions of assessments commencing within 2 weeks in HSS Trusts, ranged from 19% in Newry & Mourne to 85% in Armagh & Dungannon.
- For non-priority (other) cases, the proportion of assessments commencing within 3 months ranged from 0% in Craigavon & Banbridge to 88% in Homefirst.

Section C: Assessments Commenced

Number of Assessments Completed during Year

Table C.5 provides an analysis of the total number of assessments commenced, and assessments commenced in respect of priority and

other cases, for the year ending December 2006, in comparison with previous years.

Table C.5: Number of Assessments Commenced by Designation and Year

	Year Ending:			Change Since 31 December 2005	Change Since 31 December 2004
	31 December 2006	31 December 2005	31 December 2004		
Priority Cases	22,068	20,274	22,582	1,794	-514
Other Cases	16,135	16,099	15,308	36	827
All Assessments Commenced	38,203	36,373	37,890	1,830	313

Source: CP4

- During the year ending 31 December 2006, 38,203 assessments commenced, 5% (1,830) more than the number commenced during year ending 31 December 2005, and 0.8% (313) more than the number commenced during the year ending 31 December 2004.
- Of the 38,203 assessments commenced during this period, the majority (58%) were in respect of priority cases.

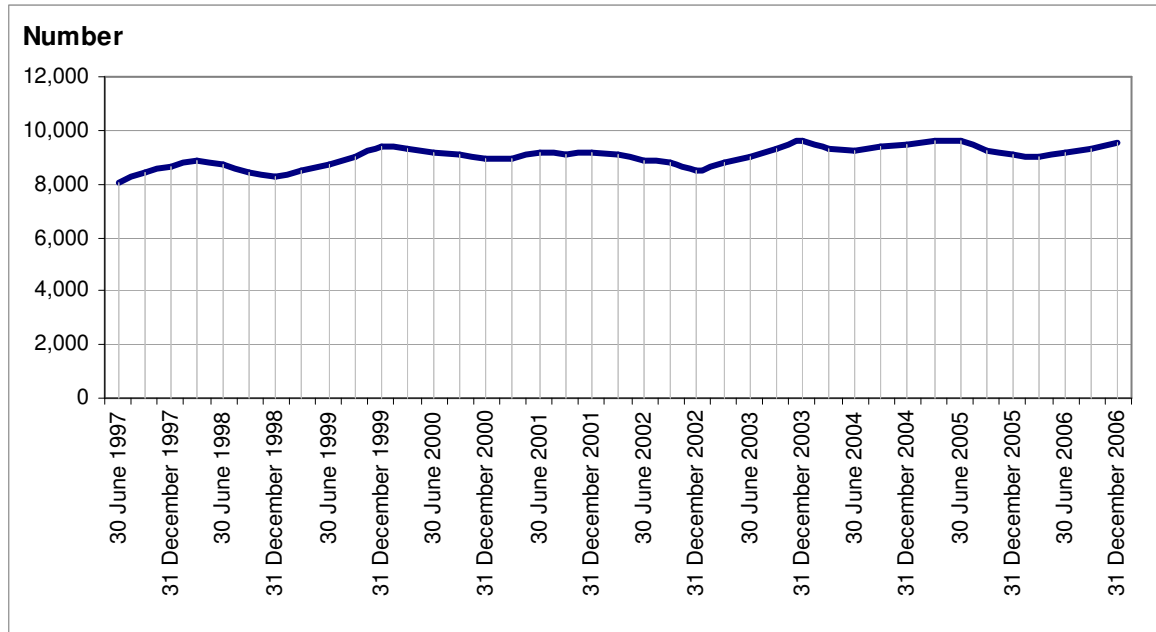
Section C: Assessments Commenced

Assessments Commenced Since 30 June 1997

The trends reported on in this section are based on the average number of referrals for assessment for the last four quarters, i.e. data for 31 December 2004 is based on the average number

of referrals for the four quarters up to and including 31 December 2004 (31 March 2004, 30 June 2004, 30 September 2004, and 31 December 2004).

Figure C.4: Assessments Commenced (30 June 1997 - 31 December 2006)

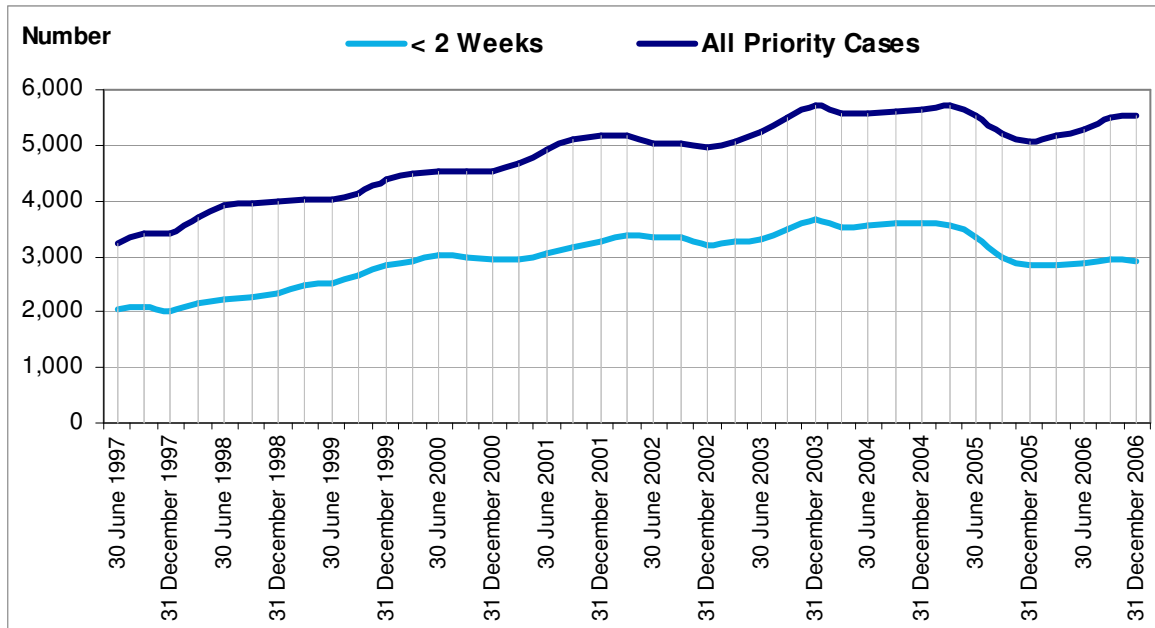


Source: CP4

- Between 30 June 1997 and 31 December 2006, the average number of assessments commenced has increased by 19%, from 8,036 to 9,551.

Section C: Assessments Commenced

Figure C.5: Assessments Commenced in Respect of Priority Cases (30 June 1997 – 31 December 2006)

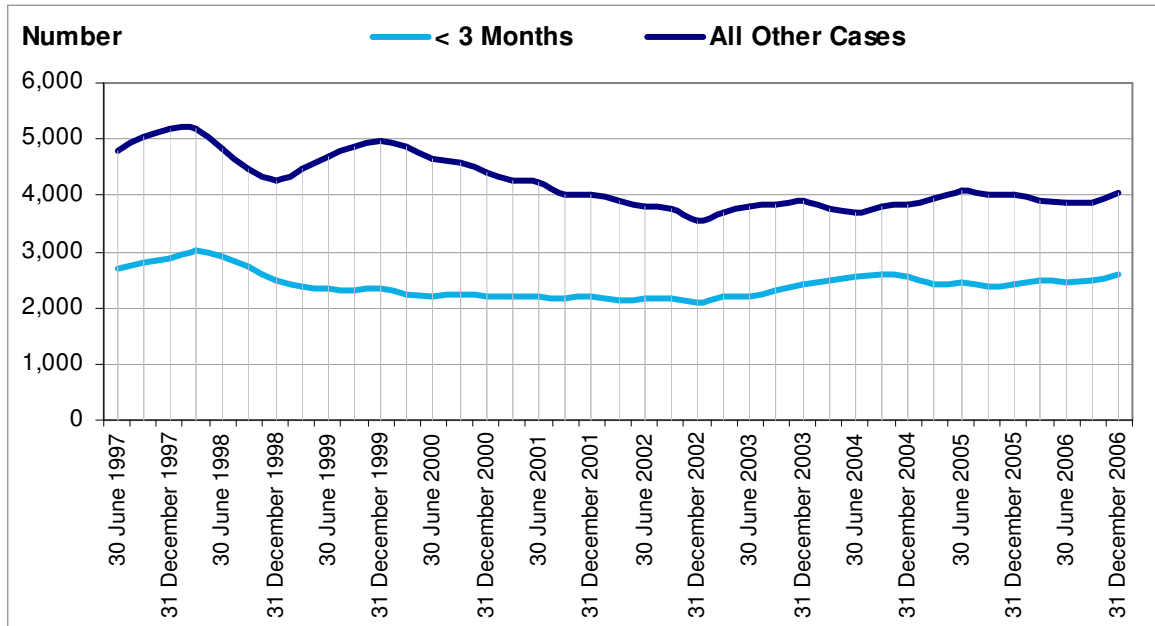


Source: CP4

- Since 30 June 1997, the average number of assessments commenced in respect of priority cases, has increased by 71%, from 3,226 in 30 June 1997 to 5,517 in 31 December 2006. The average number of assessments commenced within 2 weeks increased by 42%, from 2,046 in 30 June 1997 to 2,915 in 31 December 2006.

Section C: Assessments Commenced

Figure C.6: Assessments Commenced in Respect of Other Cases (30 June 1997 - 31 December 2006)



Source: CP4

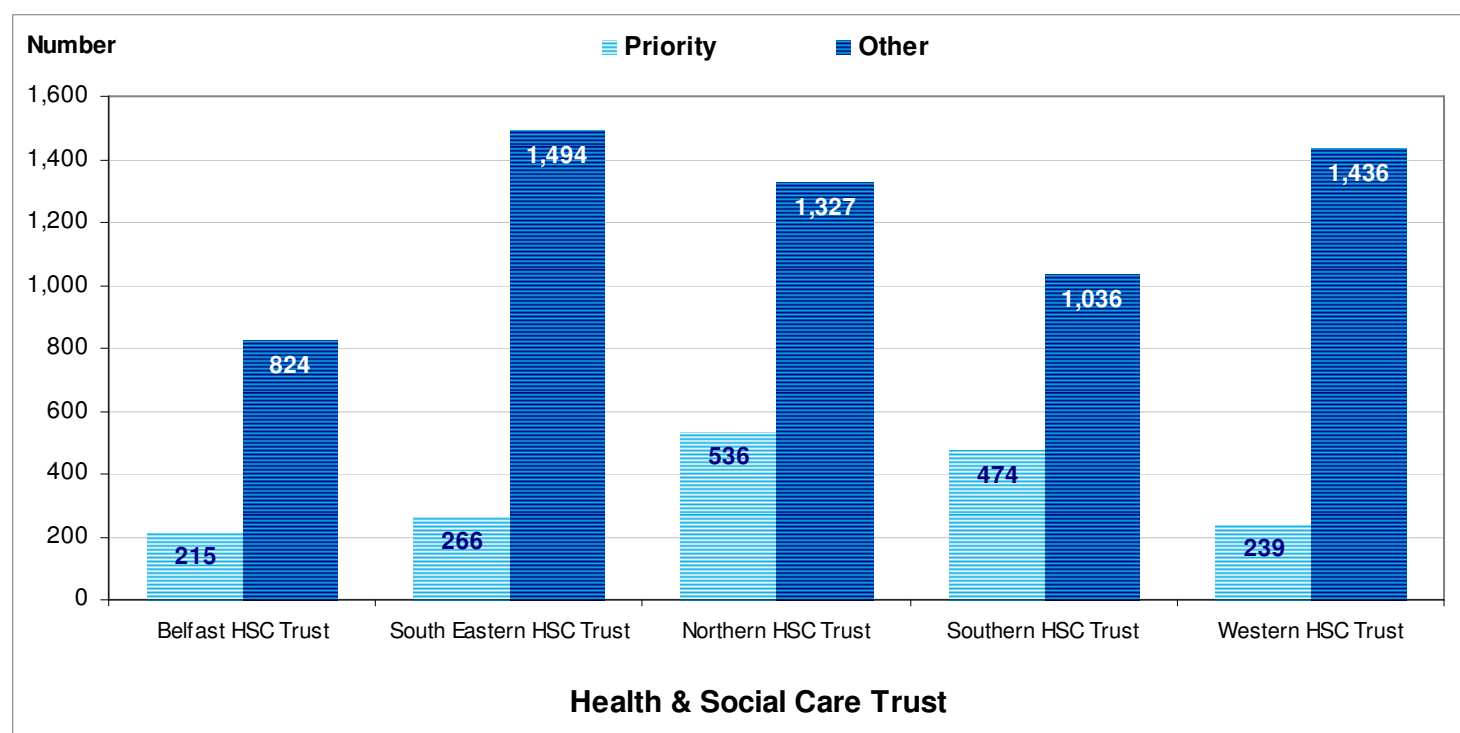
- Since 30 June 1997, the average number of assessments commenced in respect of other cases decreased by 16%, from 4,810 at 30 June 1997 to 4,034 at 31 December 2006.
- During the same period, the average number of assessments commenced within 3 months of referral decreased by 3%, from 2,687 at 30 June 1997 to 2,608 at 31 December 2006.

Appendix 1

Persons Waiting for Assessment by HSC Trust at 31 December 2006

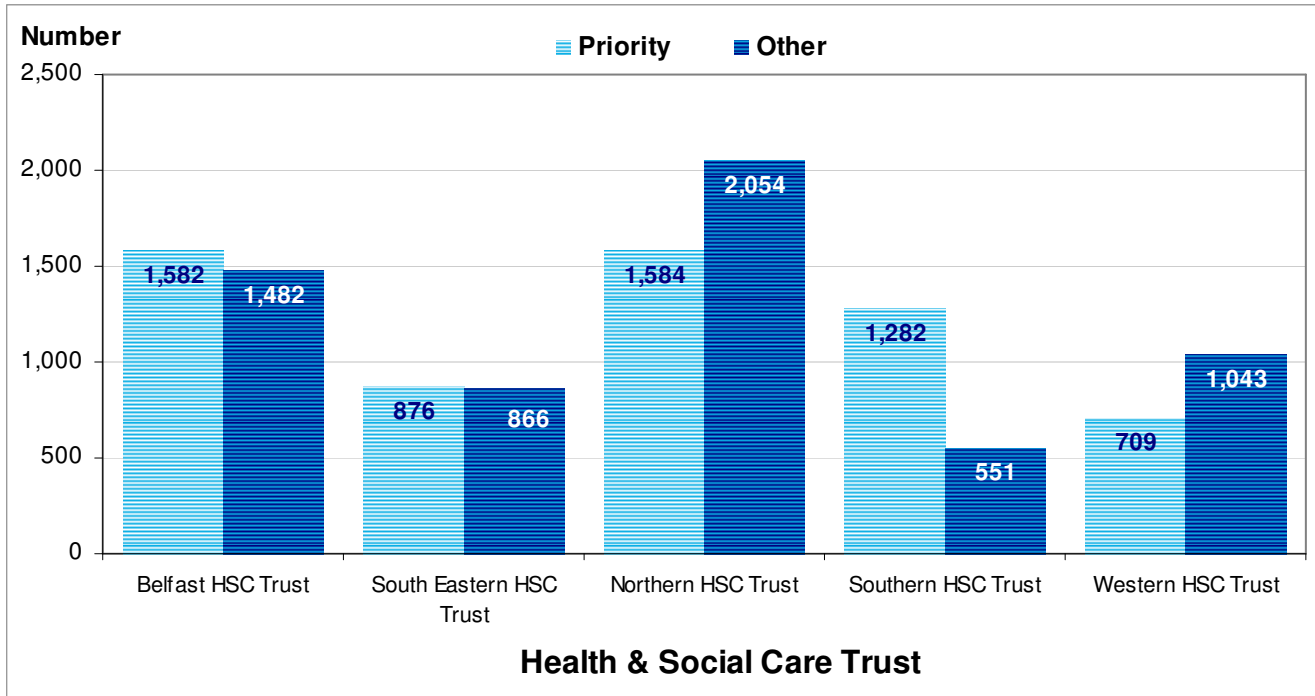
Trust	Priority Cases			Other Cases		
	Total Waiting	Number Waiting 6 Months or More	Percentage Waiting 6 Months or More	Total Waiting	Number Waiting 6 Months or More	Percentage Waiting 6 Months or More
Belfast HSC Trust	215	0	0%	824	26	3%
South Eastern HSC Trust	266	35	13%	1,494	548	37%
Northern HSC Trust	536	170	32%	1,327	422	32%
Southern HSC Trust	474	209	44%	1,036	536	52%
Western HSC Trust	239	6	3%	1,436	791	55%
Northern Ireland	1,730	420	24%	6,117	2,323	38%

Persons Waiting for Assessment by Community Occupational Therapists by HSC Trust and according to Priority and Other Cases (Quarter Ending 31 December 2006)



Appendix 2

*Referrals for Assessment according to Priority and Other Cases by HSC Trust
(Quarter Ending 31 December 2006)*

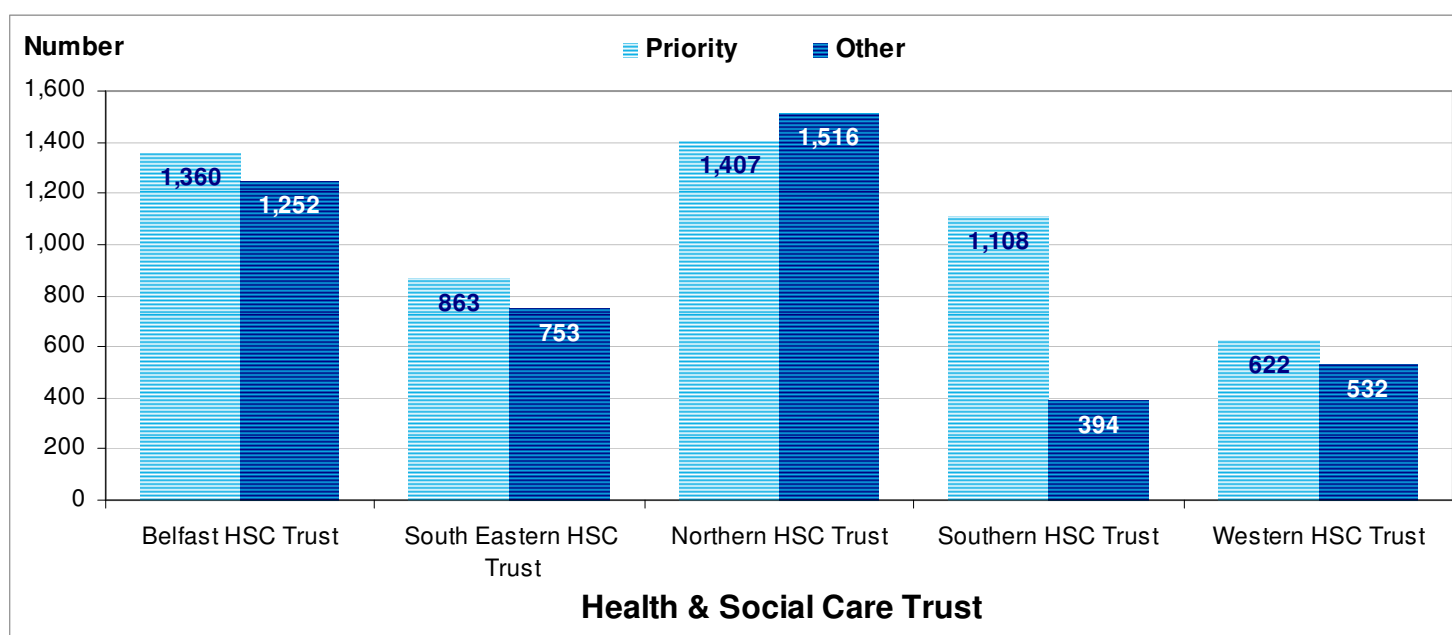


Appendix 3

Number of Assessments Commenced by HSC Trust, Designation and Time from Referral (Quarter Ending 31 December 2006)

Trust	Priority Cases			Other Cases		
	Total Commenced	Number Commenced within 2 Weeks	Percentage Commenced within 2 Weeks	Total Commenced	Number Commenced within 3 Months	Percentage Commenced within 3 Months
Belfast HSC Trust	1,360	753	55%	1,252	877	70%
South Eastern HSC Trust	863	427	49%	753	393	52%
Northern HSC Trust	1,407	796	57%	1,516	1,266	84%
Southern HSC Trust	1,108	664	60%	394	91	23%
Western HSC Trust	622	193	31%	532	141	27%
Northern Ireland	5,360	2,833	53%	4,447	2,768	62%

Number of Assessments Commenced by Designation and HSC Trust (31 December 2006)



Technical Notes

1. Occupational therapists treat people with physical and/or psychological illness or disability in order to enable them to reach their maximum level of function and independence in all aspects of life. They assess their physical, psychological and social functions and involve them in a structured programme of treatment designed to help overcome disability.
2. Referrals mean the total number of referrals to occupational therapists for assessment from all sources during the relevant quarter. Sources of referral may be general practitioners, other Health and Personal Social Services personnel such as community nurses or social workers, the Northern Ireland Housing Executive or others such as Education and Library Boards.
3. Referrals are split into Priority and Other cases. Priority cases are defined as those being discharged from hospital and at risk, those living alone and at risk, those living with a carer who is disabled or elderly, and those who are terminally ill.
4. Assessments by community occupational therapists normally take place to determine the type of housing adaptation (which may be either a major or minor adaptation) or equipment which the service user needs to help them to reach their maximum level of function or independence. It should be noted that not all assessments result in a recommendation for a housing adaptation or item of equipment. An assessment for housing adaptation can only be designated as such when the assessment is completed.
5. Time waiting for assessment refers to the time from receipt of the referral, regardless of whether the referral is in writing or not.
6. Commencement of assessment refers to the time of the first visit to the service user's home.
7. The Charter Standard states that, for priority cases, assessment should commence within two weeks of receipt of referral and, for other cases, assessment should commence within three months of receipt of referral.
8. The information in this publication relates to persons aged 19 and over in the Elderly Care and Physical & Sensory Disability Programmes of Care. Programmes of Care are divisions of health care, into which activity and finance data are assigned, so as to provide a common management framework. They are used to plan and monitor the health service by allowing performance to be measured, targets set and services managed on a comparative basis. There are nine Programmes of Care in total.
9. The source of the information is the quarterly return CP4.
10. Some of the data may be provisional and subject to revision in subsequent quarters.

Additional Information

Further information on Assessments by Occupational Therapists in Northern Ireland are available from:

Kieran Taggart

Community Information Branch
Department of Health, Social Services, and Public Safety
Annex 2
Castle Buildings
Stormont Estate
BT4 3SQ



(028) 90 522493

FAX: (028) 90 523288

EMAIL: Kieran.taggart@dhsspsni.gov.uk

Additional Copies of this statistical bulletin, are available by contacting:

Nichola Kane

Community Information Branch
Department of Health, Social Services, and Public Safety
Annex 2
Castle Buildings
Stormont Estate
BT4 3SQ



(028) 90 522960

FAX: (028) 90 523288

EMAIL: Nichola.Kane@dhsspsni.gov.uk

Alternatively, this statistical bulletin and other statistical bulletins published by Community Information Branch (CIB) are available to download free from the internet at:

Internet address: http://www.dhsspsni.gov.uk/index/stats_research/stats-cib/stats-cib_pubs.htm