



Assessments by Community Occupational Therapists in Northern Ireland - 30 June 2007

This statistical bulletin presents information on assessments by Occupational Therapists in Northern Ireland for the quarter ending 30 June 2007. It monitors information on referrals for assessment, waiting times for assessment, and assessments commenced during the quarter. Information is collected using the quarterly CP4 return.

5th October 2007

Theme:

**Assessments by
Community Occupational
Therapists in Northern
Ireland**

Issued by:

Community Information
Branch,
Information & Analysis
Directorate,
Department of Health,
Social Services & Public
Safety,
Stormont Estate,
Belfast, BT4 3SQ

Contact Person:

Kieran Taggart
(028 905 22493)

Email

Kieran.Taggart@dhsspsni.gov.uk

Internet

http://www.dhsspsni.gov.uk/index/stats_research/stats-cib/stats-cib_pubs.htm

Main Findings

Persons Waiting for Assessment

- At 30 June 2007, 6,309 people were waiting for assessment by community occupational therapists, 1,036 (14%) less than the number waiting at the end of the previous quarter, and 1,921 (23%) less than the number waiting at the end of the corresponding quarter last year.
- Of those waiting for assessment by community occupational therapists at 30 June 2007, 1,639 (26%) were priority cases and 4,670 (74%) were other cases.
- Since 31 March 2007, the number of priority cases waiting for assessment decreased by 140 (8%), and the number of other (non-priority) cases decreased by 896 (16%).
- Over the last year from 30 June 2006, the number of priority cases waiting for assessment decreased by 714 (30%), whilst the number of other cases decreased by 1,207 (21%).
- Three quarters (75%) of priority cases and 56% of other cases had been waiting less than 3 months for assessment at 30 June 2007.
- Since 30 June 2006, the proportion of priority cases waiting 6 months or more for assessment decreased by 24 percentage points.
- Since 31 December 1997, the number of people waiting for assessment has decreased by 1%, from 7,638 at 31 December 1997 to 7,542 at 30 June 2007.

Referrals for Assessment

- During the quarter ending 30 June 2007, there were 13,161 referrals for assessment by community occupational therapists, 91 more than during the previous quarter, and 1,997 (18%) more than the corresponding figure at 30 June 2006.
- During the quarter ending 30 June 2007, 15% of all referrals for assessment by community occupational therapists were from GP's, 5% from NIHE, 53% from the other HPSS sources, and 27% from other sources.
- Between 31 December 1997 and 30 June 2007, the average number of referrals for assessment increased by 9%, from 11,576 in 31 December 1997 to 12,596 at 30 June 2007.

Assessments Commenced

- During the quarter ending 30 June 2007, 10,505 assessments were commenced by community occupational therapists, 309 less than the number commenced during the previous quarter, and 1,111 (12%) more than the number commenced during the same quarter last year.
- Over half (58%) of assessments in respect of priority cases commenced within 2 weeks of the referral, 17% in 2 weeks to 1 month, and 25% in 1 month or more.
- Almost two thirds (65%) of assessments in respect of other cases commenced within 3 months of the referral, 9% in 3 to 6 months, and 26% in 6 months or more.
- Between 31 December 1997 and 30 June 2007, the average number of assessments commenced has increased by 17%, from 8,619 to 10,113.

Contents

	Page
Section A: Persons Waiting Assessment	1
Numbers of People Waiting Assessment.....	1
Length of Time Waiting.....	3
Number Waiting by Trust.....	5
Trends.....	7
Section B: Referrals	9
Number of Referrals for Assessment.....	9
Source of Referral.....	10
Number of Referrals during Year.....	12
Trends.....	13
Section C: Assessments Commenced	14
Number of Assessments Commenced.....	14
Length of Time from Referral.....	15
Assessments Commenced by Trust.....	17
Number of Assessments Commenced during Year.....	18
Trends.....	20
Technical Notes.....	23
Additional Information.....	24

Section A: Persons Waiting for Assessment

Number of Persons Waiting for Assessment

Table A.1 provides an analysis of the number of persons waiting for assessment by community

occupational therapists, according to whether these were priority cases or other cases.

Table A.1: Persons Waiting for Assessment

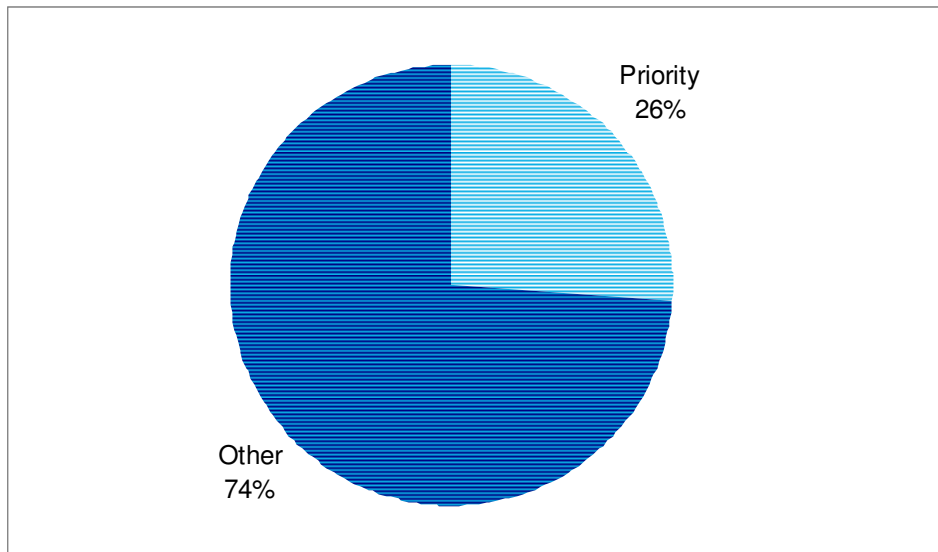
	Quarter Ending:			Quarterly Change	Annual Change
	30 June 2007	31 March 2007	30 June 2006		
Priority Cases	1,639	1,779	2,353	-140	-714
Other Cases	4,670	5,566	5,877	-896	-1,207
All Persons Waiting	6,309	7,345	8,230	-1,036	-1,921

Source: CP4

- At 30 June 2007, 6,309 people were waiting for assessment by community occupational therapists, 1,036 (14%) less than the number waiting at the end of the previous quarter, and 1,921 (23%) less than the number waiting at the end of the corresponding quarter last year.
- Of those waiting for assessment by community occupational therapists at 30 June 2007, 1,639 (26%) were priority cases and 4,670 (74%) were other cases.
- Since 31 March 2007, the number of priority cases waiting for assessment decreased by 140 (8%), and the number of other (non-priority) cases decreased by 896 (16%).
- Over the last year from 30 June 2006, the number of priority cases waiting for assessment decreased by 714 (30%), whilst the number of other cases decreased by 1,207 (21%).

Section A: Persons Waiting for Assessment

Figure A.1: Persons Waiting for Assessment by Community Occupational Therapists, according to Priority and Other Cases (Quarter Ending 30 June 2007)



Source: CP4

Section A: Persons Waiting for Assessment

Persons Waiting for Assessment by Length of Time Waiting

Table A.2 shows the number of persons waiting for assessment, by length of time waiting, for the current quarter, previous quarter and

corresponding quarter last year. This is shown for priority cases, other cases and all cases.

Table A.2 (a): Priority Cases Waiting for Assessment by Time Waiting and Quarter

	Quarter Ending:			Quarterly Change	Annual Change
	30 June 2007	31 March 2007	30 June 2006		
Under 1 month	615	656	721	-41	-106
1 month - under 3 months	621	573	521	48	100
3 months - under 6 months	314	316	418	-2	-104
6 months and over	89	234	693	-145	-604
All Priority Cases	1,639	1,779	2,353	-140	-714

Source: CP4

Table A.2 (b): Other Cases Waiting for Assessment by Time Waiting and Quarter

	Quarter Ending:			Quarterly Change	Annual Change
	30 June 2007	31 March 2007	30 June 2006		
Under 1 month	1,188	1,311	1,230	-123	-42
1 month - under 3 months	1,436	1,481	1,491	-45	-55
3 months - under 6 months	1,427	1,235	1,158	192	269
6 months and over	619	1,539	1,998	-920	-1,379
All Other Cases	4,670	5,566	5,877	-896	-1,207

Source: CP4

Section A: Persons Waiting for Assessment

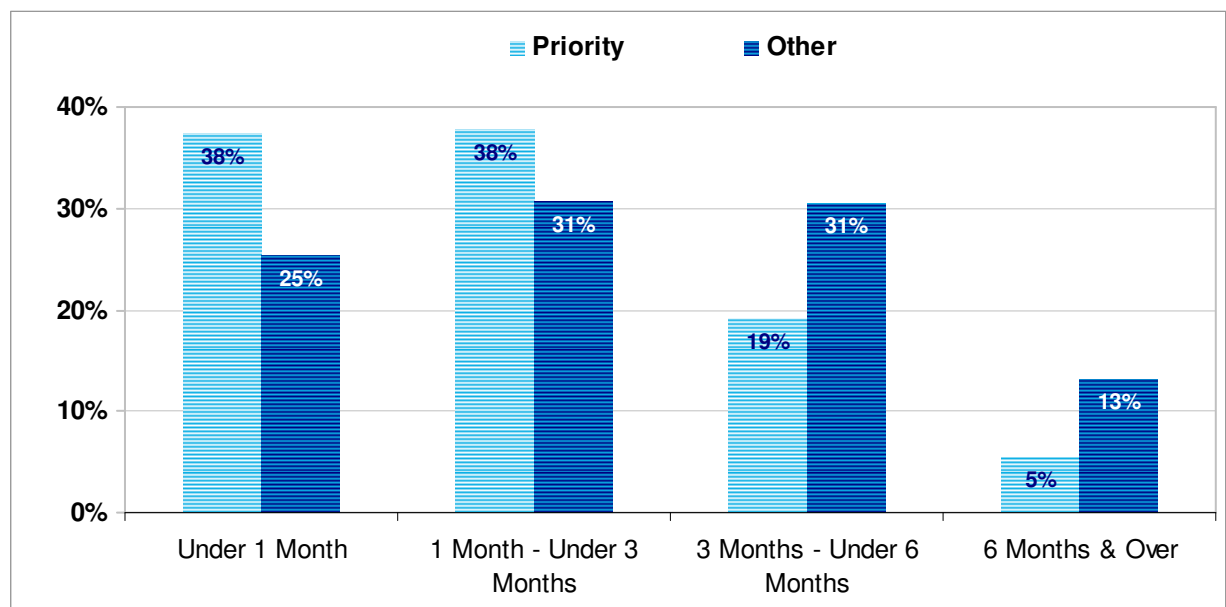
Table A.2 (c): All Cases Waiting for Assessment by Time Waiting and Quarter

	Quarter Ending:			Quarterly Change	Annual Change
	30 June 2007	31 March 2007	30 June 2006		
Under 1 month	1,803	1,967	1,951	-164	-148
1 month - under 3 months	2,057	2,054	2,012	3	45
3 months - under 6 months	1,741	1,551	1,576	190	165
6 months and over	708	1,773	2,691	-1,065	-1,983
All Cases	6,309	7,345	8,230	-1,036	-1,921

Source: CP4

- At 30 June 2007, 5,601 (89%) people waiting for assessment had been waiting for less than 6 months, compared with 76% at the end of the previous quarter and 67% at 30 June 2006.

Figure A.2: Persons Waiting for Assessment by Length of Time and according to Priority and Other Cases (Quarter Ending 30 June 2007)



Source: CP4

- Three quarters (75%) of priority cases and 56% of other cases had been waiting less than 3 months for assessment at 30 June 2007.
- Since 30 June 2006, the proportion of priority cases waiting 6 months or more for assessment decreased by 24 percentage points.

Section A: Persons Waiting for Assessment

Persons Waiting for Assessment by HSC Trust

Table A.3 shows, for each HSC Trust, the number of persons waiting according to priority and other cases, and the number and percentage waiting for six months or more.

Table A.3: Persons Waiting for Assessment by HSC Trust at 30 June 2007

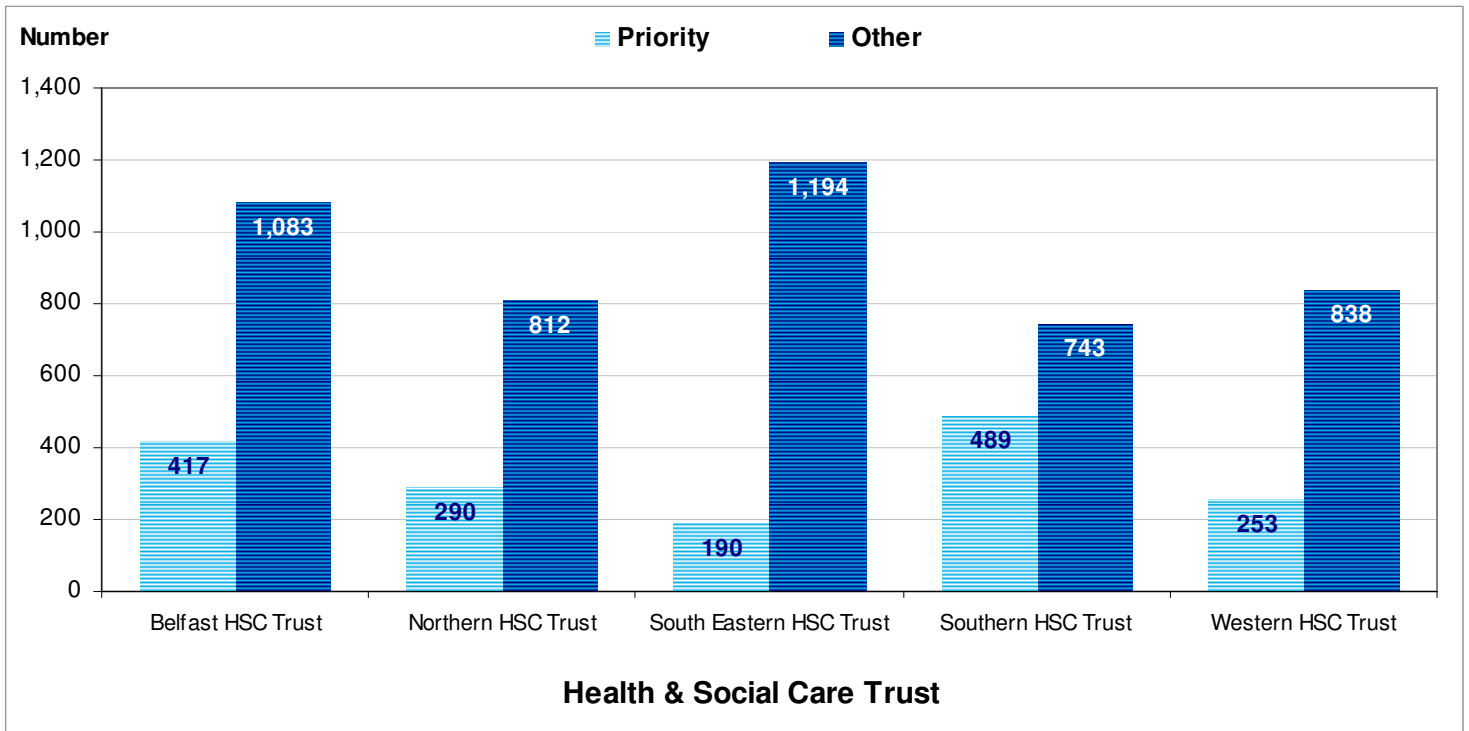
Trust	Priority Cases			Other Cases		
	Total Waiting	Number Waiting 6 Months or More	Percentage Waiting 6 Months or More	Total Waiting	Number Waiting 6 Months or More	Percentage Waiting 6 Months or More
Belfast HSC Trust	417	8	2%	1,083	176	16%
Northern HSC Trust	290	12	4%	812	56	7%
South Eastern HSC Trust	190	10	5%	1,194	210	18%
Southern HSC Trust	489	35	7%	743	112	15%
Western HSC Trust	253	24	9%	838	65	8%
Northern Ireland	1,639	89	5%	4,670	619	13%

Source: CP4

- Across HSC Trusts, the Southern HSC Trust had the highest number of people waiting for assessment designated priority (489), whilst the South Eastern HSC Trust had the highest number waiting assessment for other cases (1,194).
- At 30 June 2007, the Western HSC Trust had the highest proportion of its priority cases (9%), whilst the South Eastern HSC Trust the highest proportion of its other cases (18%) waiting 6 months or more for assessment.

Section A: Persons Waiting for Assessment

Figure A.3: Persons Waiting for Assessment by Community Occupational Therapists by HSC Trust and according to Priority and Other Cases (Quarter ending 30 June 2007)



Source: CP4

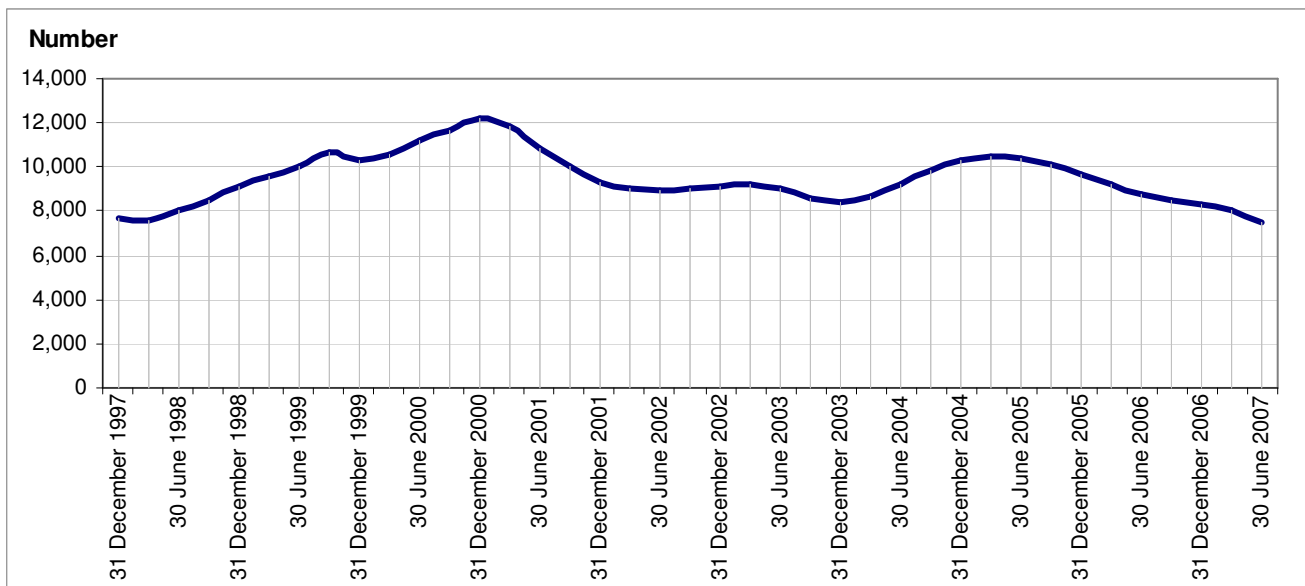
Section A: Persons Waiting for Assessment

Persons Waiting for Assessment Since 31 December 1997

The trends described in this section are based on the averages of figures for four quarters. For example, the figure for 30 June 2007 is based on the average number of persons

waiting for assessment for the four quarters ending 30 June 2007 (30 September 2006, 31 December 2006, 31 March 2007, and 30 June 2007).

Figure A.4: All Persons Waiting for Assessment by Community Occupational Therapists (31 December 1997 – 30 June 2007)

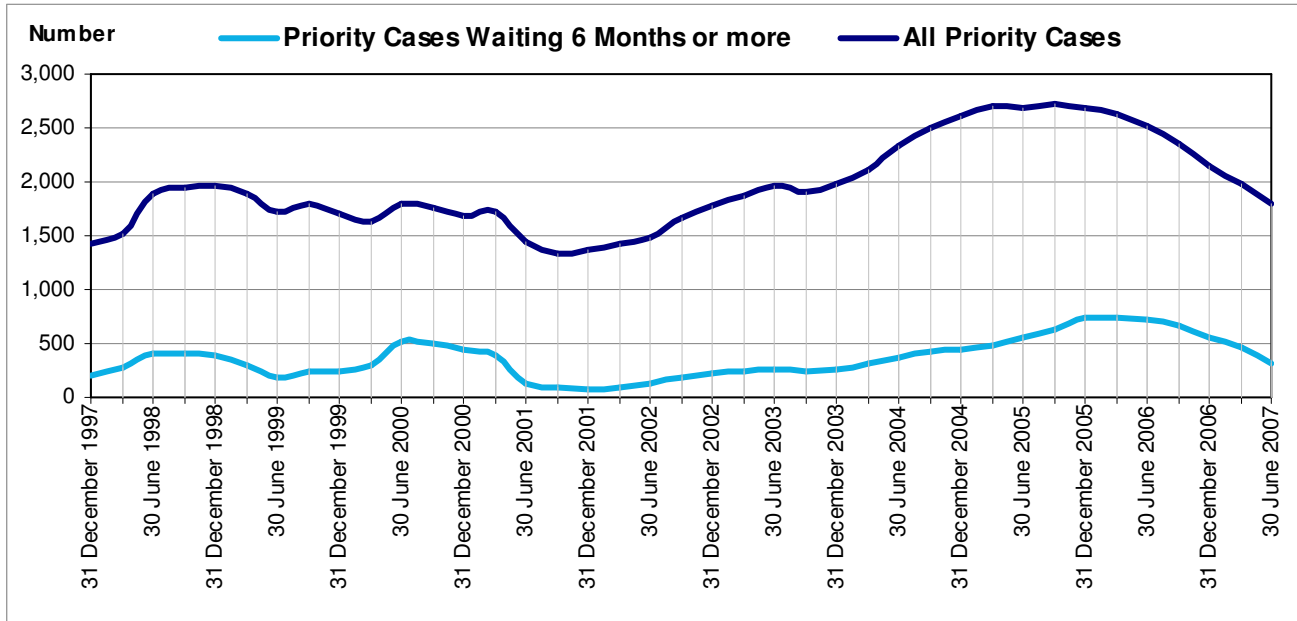


Source: CP4

- Since 31 December 1997, the number of people waiting for assessment has decreased by 1%, from 7,638 at 31 December 1997 to 7,542 at 30 June 2007.
- Between 31 December 1997 and 30 June 2007, the highest average number of people waiting for assessment was 12,232 at 31 December 2000, whilst the lowest average number of people waiting for assessment was 7,542 at 30 June 2007.

Section A: Persons Waiting for Assessment

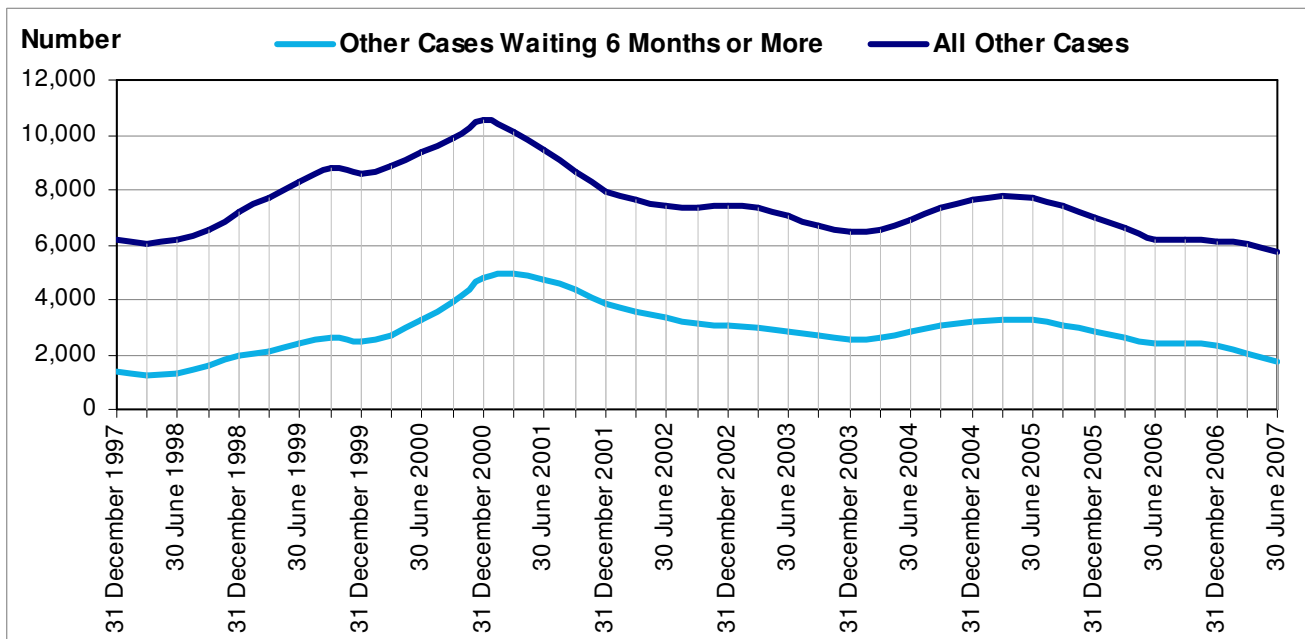
Figure A.5: Priority Cases Waiting for Assessment by Community Occupational Therapists (31 December 1997 – 30 June 2007)



Source: CP4

- The number of priority cases waiting 6 months or more has decreased steadily since 31 December 2005.

Figure A.6: Other Cases Waiting for Assessment by Community Occupational Therapists (31 December 1997 – 30 June 2007)



Source: CP4

Section B: Referrals for Assessment

Number of Referrals for Assessment

An analysis of the number of referrals for assessment by community occupational therapists, according to whether these were in respect of

priority cases or other cases, for the quarter ending 30 June 2007, is shown in Table B.1.

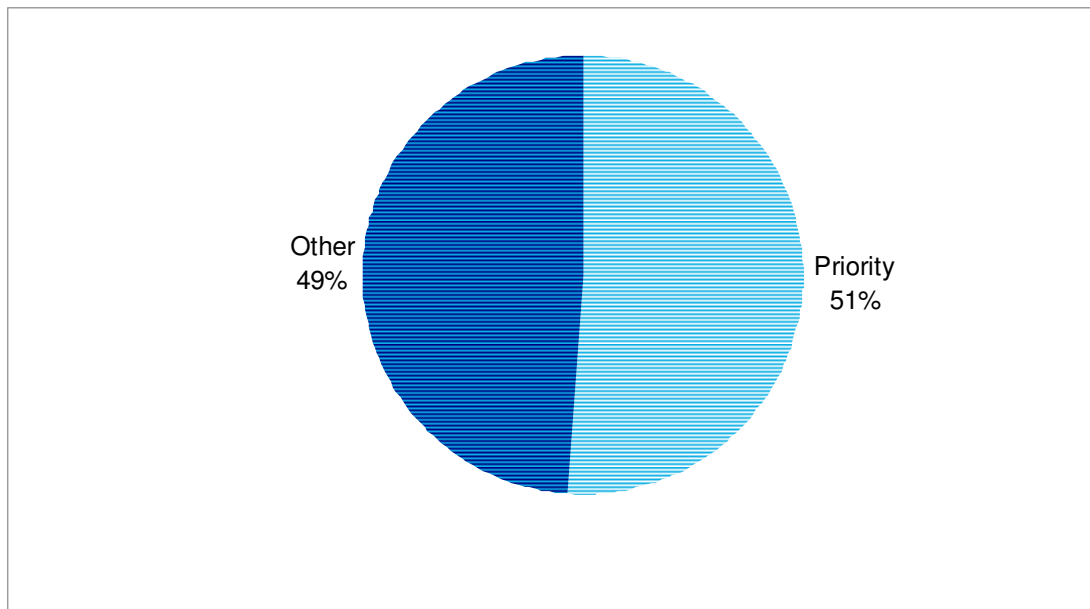
Table B.1: Number of Referrals Received for Assessment by Quarter

	Quarter Ending:			Quarterly Change	Annual Change
	30 June 2007	31 March 2007	30 June 2006		
Priority Cases	6,733	6,410	5,651	323	1,082
Other Cases	6,428	6,660	5,513	-232	915
All Referrals	13,161	13,070	11,164	91	1,997

Source: CP4

- During the quarter ending 30 June 2007, there were 13,161 referrals for assessment by community occupational therapists, 91 more than during the previous quarter, and 1,997 (18%) more than the corresponding figure at 30 June 2006.

Figure B.1: Referrals according to Priority and Other Cases (Quarter Ending 30 June 2007)

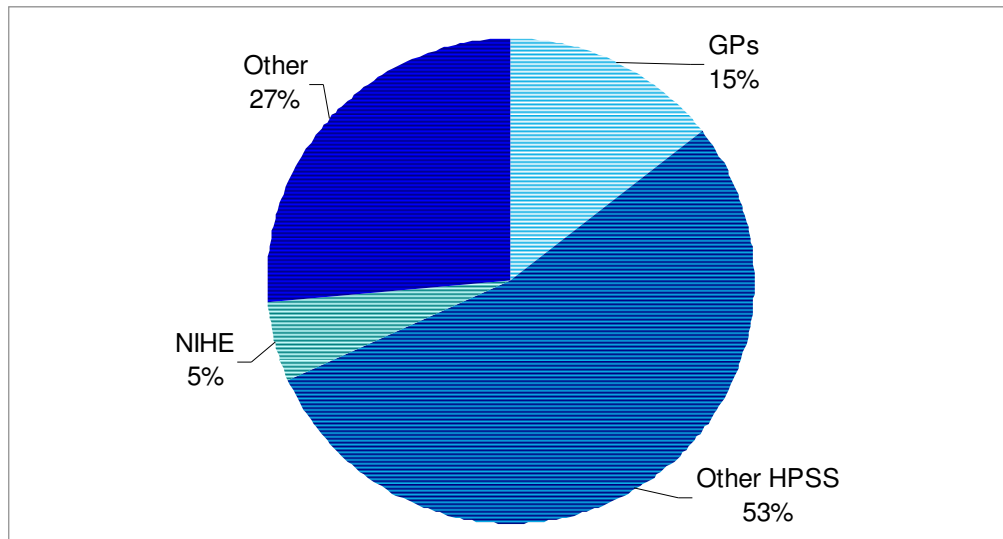


Source: CP4

Section B: Referrals for Assessment

Source of Referrals for Assessment

Figure B.2: Source of Referrals for Assessment (Quarter Ending 30 June 2007)

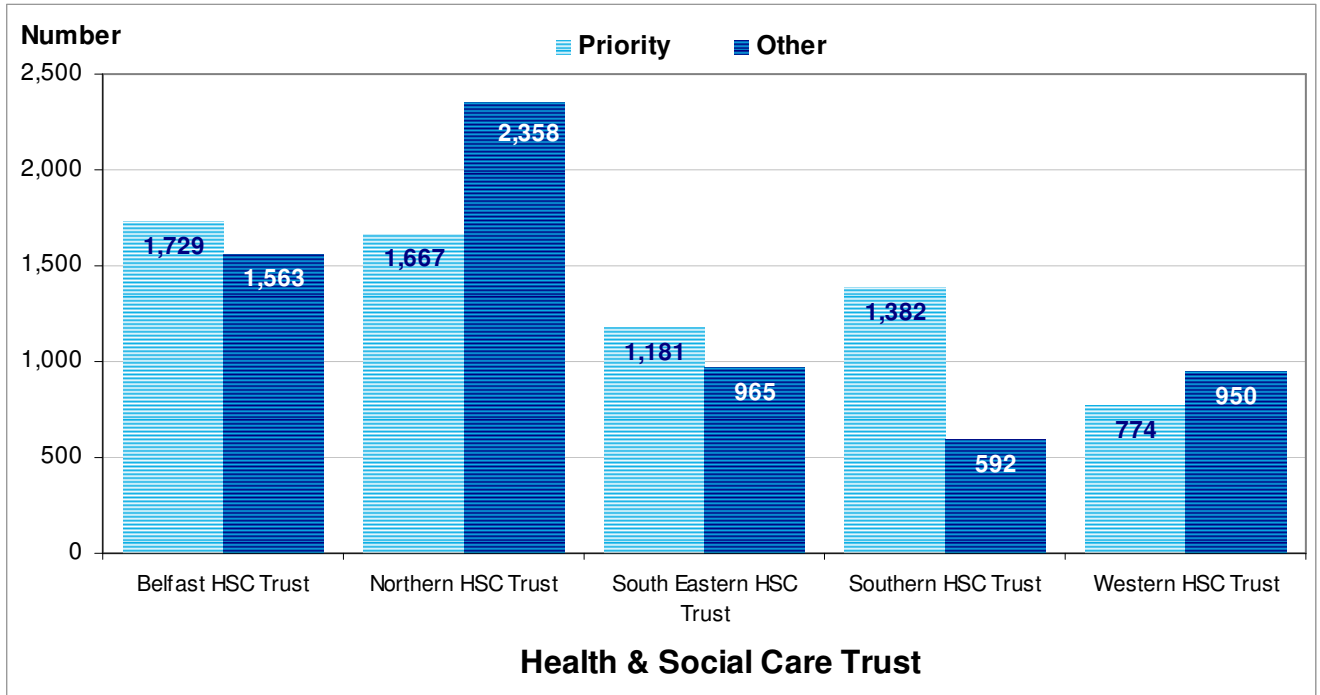


Source: CP4

- During the quarter ending 30 June 2007, 15% of all referrals for assessment by community occupational therapists were from GP's, 5% from NIHE, 53% from other HPSS sources, and 27% from other sources.

Section B: Referrals for Assessment

Figure B.3: Referrals for Assessment according to Priority and Other Cases by HSC Trust (Quarter ending 30 June 2007)



Source: CP4

- Belfast and the Northern HSC Trusts (1,729 and 1,667 respectively) had the highest number of priority case referrals for assessment by occupational therapists, whilst the Western HSC Trust (774) had the lowest.
- In terms of referrals for assessment designated as other cases, the Northern HSC Trust (2,358) had the highest number and the Southern HSC Trust (592) the lowest.

Section B: Referrals for Assessment

Number of Referrals for Assessment during Year

Table B.2 provides an analysis of the total number of referrals, and referrals in respect of priority and other cases

made during the four quarters up to and including 30 June (2005 – 2007).

Table B.2: Number of Referrals Received for Assessment

	Year Ending			Change	
	30 June 2007	30 June 2006	30 June 2005	2006 - 2007	2005 - 2007
Priority Cases	25,442	23,690	24,764	1,752	678
Other Cases	24,942	22,155	23,090	2,787	1,852
All Referrals	50,384	45,845	47,854	4,539	2,530

Source: CP4

- During the year ending 30 June 2007, there were 50,384 referrals for assessment by community occupational therapists, 4,539 more than during year ending 30 June 2006, and 2,530 more than during the year ending 30 June 2005.
- Since 30 June 2005, the number of referrals for assessment designated as priority cases increased by 678.

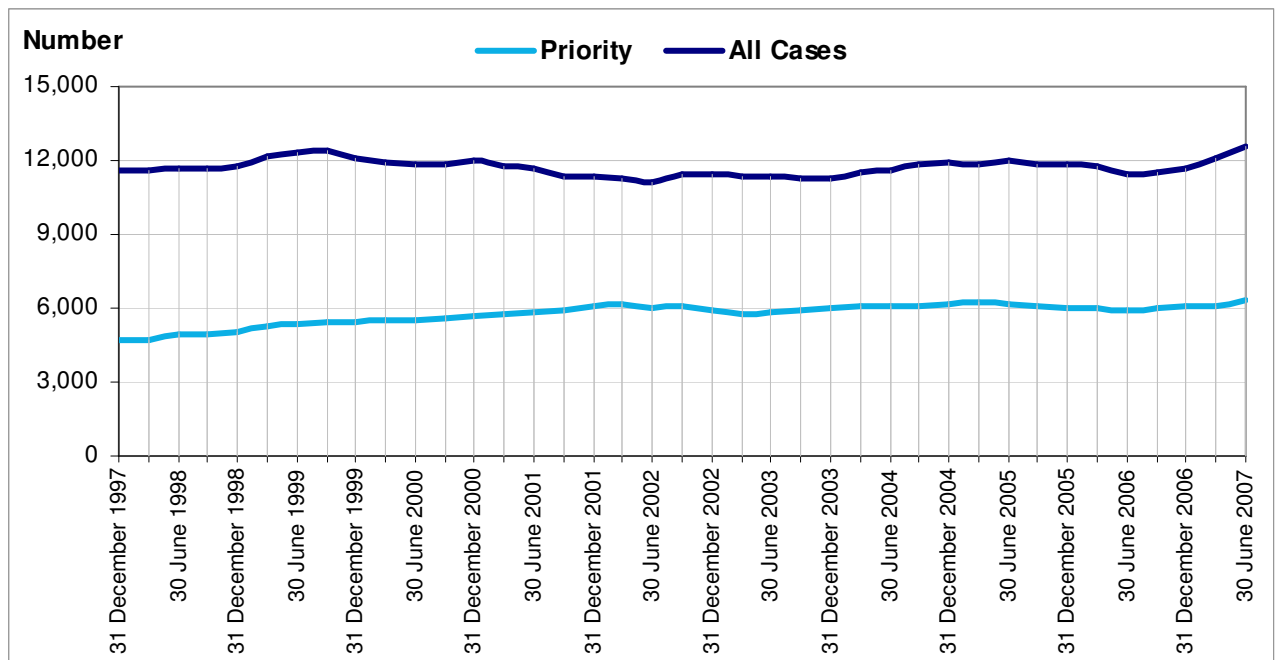
Section B: Referrals for Assessment

Referrals for Assessment Since 31 December 1997

The trends reported in this section are based on the average number of referrals for assessment for four quarters, i.e. data for 30 June 2007 is based on the average number of

referrals for the four quarters ending 30 June 2007 (30 September 2006, 31 December 2006, 31 March 2007, and 30 June 2007).

Figure B.4: Referrals for Assessment according to Priority and Other Cases (31 December 1997 - 30 June 2007)



Source: CP4

- Between 31 December 1997 and 30 June 2007, the average number of referrals for assessment increased by 9%, from 11,576 in 31 December 1997 to 12,596 at 30 June 2007.
- During this period, the average number of referrals for assessment designated as priority cases increased by 35%, from 4,713 in 31 December 1997 to 6,361 in 30 June 2007.

Section C: Assessments Commenced

Number of Assessments Commenced

Table C.1 provides an analysis of the number of assessments commenced by community occupational therapists,

according to whether these were in respect of priority cases or other cases.

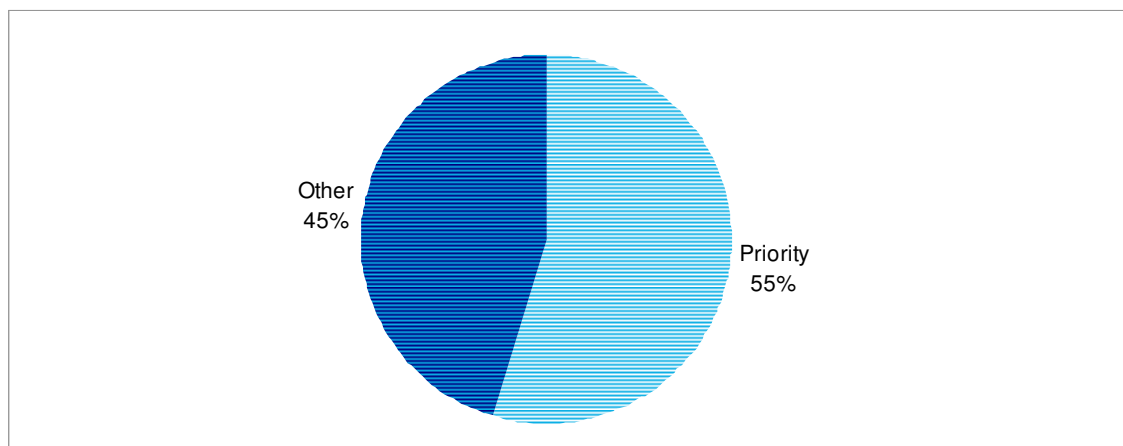
Table C.1: Number of Assessments Commenced by Quarter

	Quarter Ending:			Quarterly Change	Annual Change
	30 June 2007	31 March 2007	30 June 2006		
Priority Cases	5,761	5,775	5,417	-14	344
Other Cases	4,744	5,039	3,977	-295	767
All Assessments Commenced	10,505	10,814	9,394	-309	1,111

Source: CP4

- During the quarter ending 30 June 2007, 10,505 assessments were commenced by community occupational therapists, 309 less than the number commenced during the previous quarter, and 1,111 (12%) more than the number commenced during the same quarter last year.
- During the quarter ending 30 June 2007, a higher proportion of assessments commenced were designated priority cases (55%) than other cases (45%).
- Between the quarters ending 31 March 2007 and 30 June 2007, the number of priority case assessments commenced decreased by 14, from 5,775 in 31 March 2007 to 5,761 in 30 June 2007, and the number of other case assessments commenced decreased by 295 (6%), from 5,039 in 31 March 2007 to 4,744 in 30 June 2007.

Figure C.1: Assessments Commenced according to Priority and Other Cases (Quarter ending 30 June 2007)



Source: CP4

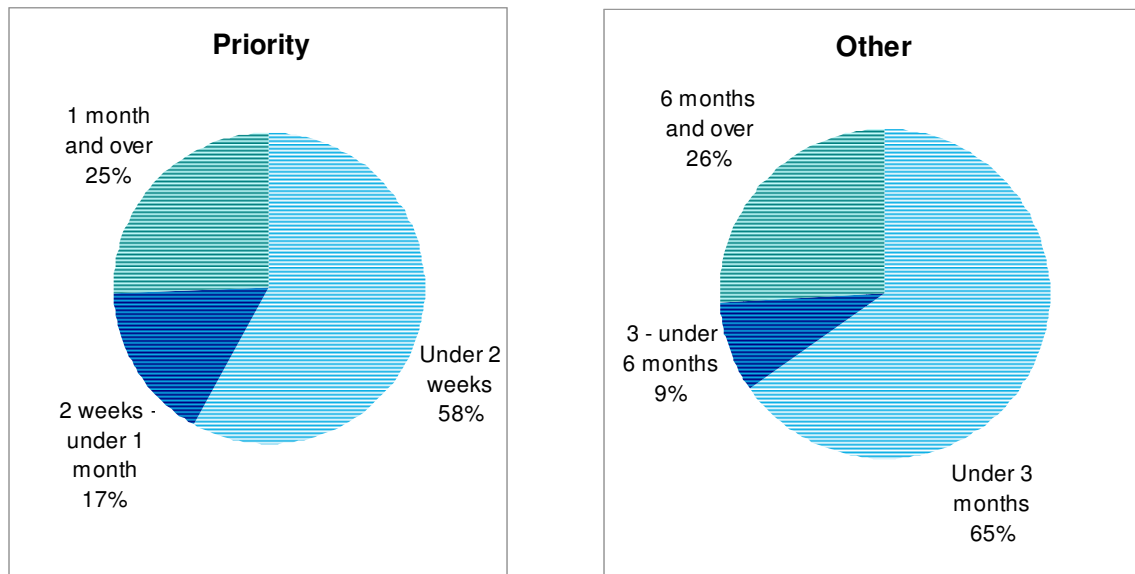
Section C: Assessments Commenced

Number of Assessments Commenced by Time from Referral (30 June 2007)

Figure C.2 provides an analysis of assessments commenced, according to length of time between referral and

start of assessment, for priority and other cases.

Figure C.2: Number of Assessments Commenced by Designation and Time from Referral (Quarter ending 30 June 2007)



Source: CP4

- Almost 6 in 10 (58%) assessments in respect of priority cases commenced within 2 weeks of the referral, 17% in 2 weeks to 1 month, and 25% in 1 month or more.

- Almost two thirds (65%) of assessments in respect of other cases commenced within 3 months of the referral, 9% in 3 to 6 months, and 26% in 6 months or more.

Section C: Assessments Commenced

Tables C.2 (a and b) show the number of assessments commenced, by length

of time from referral, for priority cases and other cases.

Table C.2 (a): Number of Assessments in Respect of Priority Cases Commenced by Quarter and Time from Referral

	Quarter Ending:			Quarterly Change	Annual Change
	30 June 2007	31 March 2007	30 June 2006		
Under 2 weeks	3,343	3,175	2,882	168	461
2 weeks - under 1 month	952	1,004	860	-52	92
1 month and over	1,466	1,596	1,675	-130	-209
All Priority Cases	5,761	5,775	5,417	-14	344

Source: CP4

Table C.2 (b): Number of Assessments in Respect of Other (Non-Priority) Cases Commenced by Quarter and Time from Referral

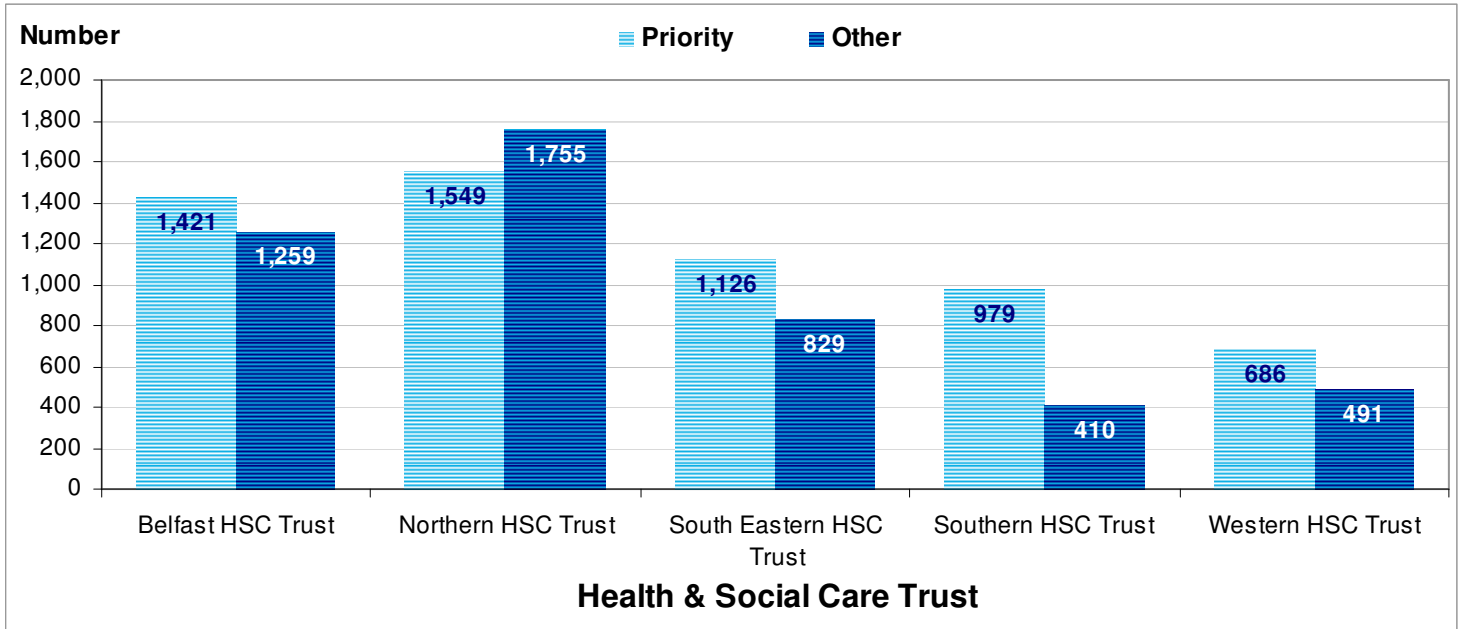
	Quarter Ending:			Quarterly Change	Annual Change
	30 June 2007	31 March 2007	30 June 2006		
Under 3 months	3,091	2,816	2,655	275	436
3 months - under 6 months	425	664	543	-239	-118
6 months and over	1,228	1,559	779	-331	449
All Other Cases	4,744	5,039	3,977	-295	767

Source: CP4

Section C: Assessments Commenced

Number of Assessments Commenced by HSC Trust

Figure C.3: Number of Assessments Commenced by Designation and HSC Trust (Quarter ending 30 June 2007)



Source: CP4

- During the quarter ending 30 June 2007, the Northern HSC Trust (1,549) had the highest number of assessments commenced in respect of priority cases, whilst the Western HSC Trust (686) had the lowest.
- For the same period, the Northern HSC Trust (1,755) had the highest number of assessments commenced in respect of other (non-priority) cases.

Section C: Assessments Commenced

Table C.4 shows, for each HSC Trust, the number of assessments commenced according to priority and other cases.

Table C.4: Number of Assessments Commenced by HSC Trust, Designation and Time from Referral (Quarter ending 30 June 2007)

Trust	Priority Cases			Other Cases		
	Total Commenced	Number Commenced within 2 Weeks	Percentage Commenced within 2 Weeks	Total Commenced	Number Commenced within 3 Months	Percentage Commenced within 3 Months
Belfast HSC Trust	1,421	921	65%	1,259	962	76%
Northern HSC Trust	1,549	874	56%	1,755	1,496	85%
South Eastern HSC Trust	1,126	665	59%	829	366	44%
Southern HSC Trust	979	650	66%	410	110	27%
Western HSC Trust	686	233	34%	491	157	32%
Northern Ireland	5,761	3,343	58%	4,744	3,091	65%

Source: CP4

- In respect of priority cases the proportions of assessments commencing within 2 weeks in HSC Trusts, ranged from 34% in the Western HSC Trust to 66% in the Southern HSC Trust.
- For non-priority (other) cases, the proportion of assessments commencing within 3 months ranged from 27% in the Southern HSC Trust to 85% in the Northern HSC Trust.

Section C: Assessments Commenced

Number of Assessments Completed during Year

Table C.5 provides an analysis of the total number of assessments commenced, and assessments commenced in respect of priority and

other cases, for the year ending 30 June 2007, including a comparison with the previous two years.

Table C.5: Number of Assessments Commenced by Designation and Year

	Year Ending:			Change Since 30 June 2006	Change Since 30 June 2005
	30 June 2007	30 June 2006	30 June 2005		
Priority Cases	22,511	21,143	22,122	1,368	389
Other Cases	17,940	15,411	16,321	2,529	1,619
All Assessments Commenced	40,451	36,554	38,443	3,897	2,008

Source: CP4

- 40,451 assessments commenced during the year ending 30 June 2007, 11% (3,897) more than the number commenced during year ending 30 June 2006, and 5% (2,008) more than the number commenced during the year ending 30 June 2005.
- Of the 40,451 assessments commenced during this period, the majority (56%) were in respect of priority cases.

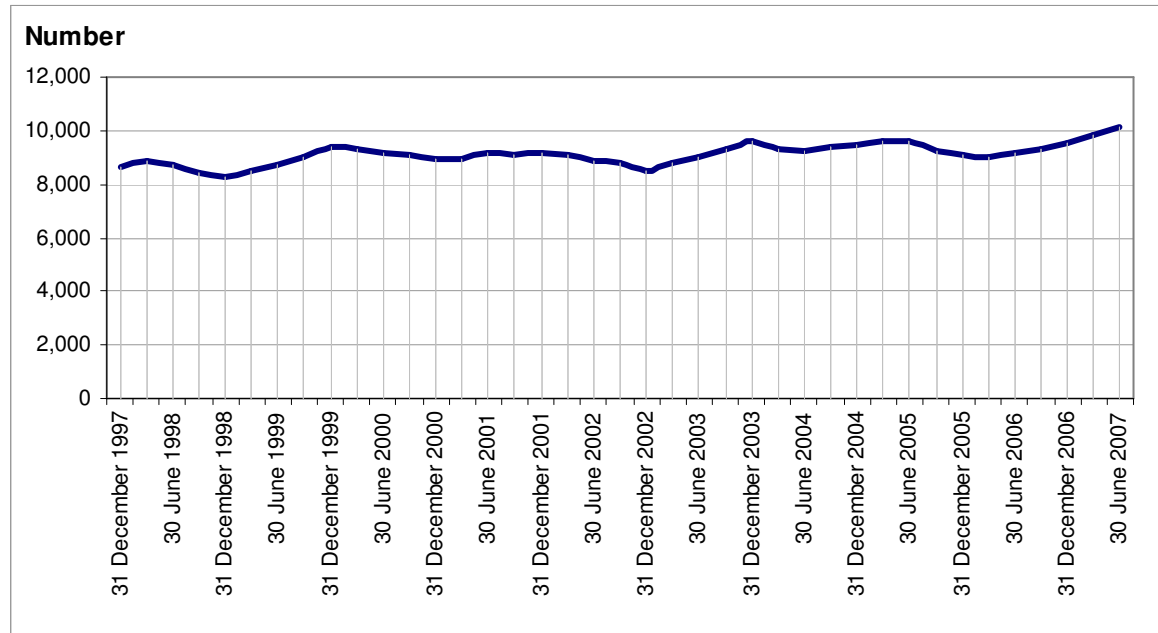
Section C: Assessments Commenced

Assessments Commenced Since 31 December 1997

The trends reported on in this section are based on the average number of referrals for assessment for the last four quarters, i.e. data for 30 June 2007 is based on the average number of

referrals for the four quarters up to and including 30 June 2007 (30 September 2006, 31 December 2006, 31 March 2007, and 30 June 2007).

Figure C.4: Assessments Commenced (31 December 1997 - 30 June 2007)

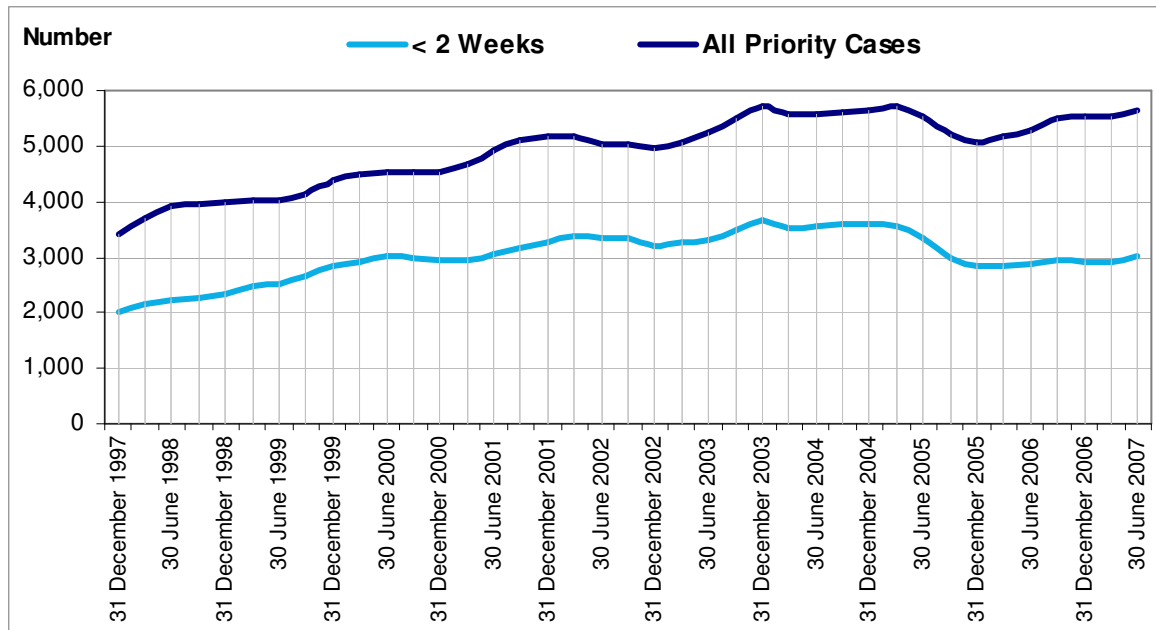


Source: CP4

- Between 31 December 1997 and 30 June 2007, the average number of assessments commenced has increased by 17%, from 8,619 to 10,113.

Section C: Assessments Commenced

Figure C.5: Assessments Commenced in Respect of Priority Cases (31 December 1997 - 30 June 2007)

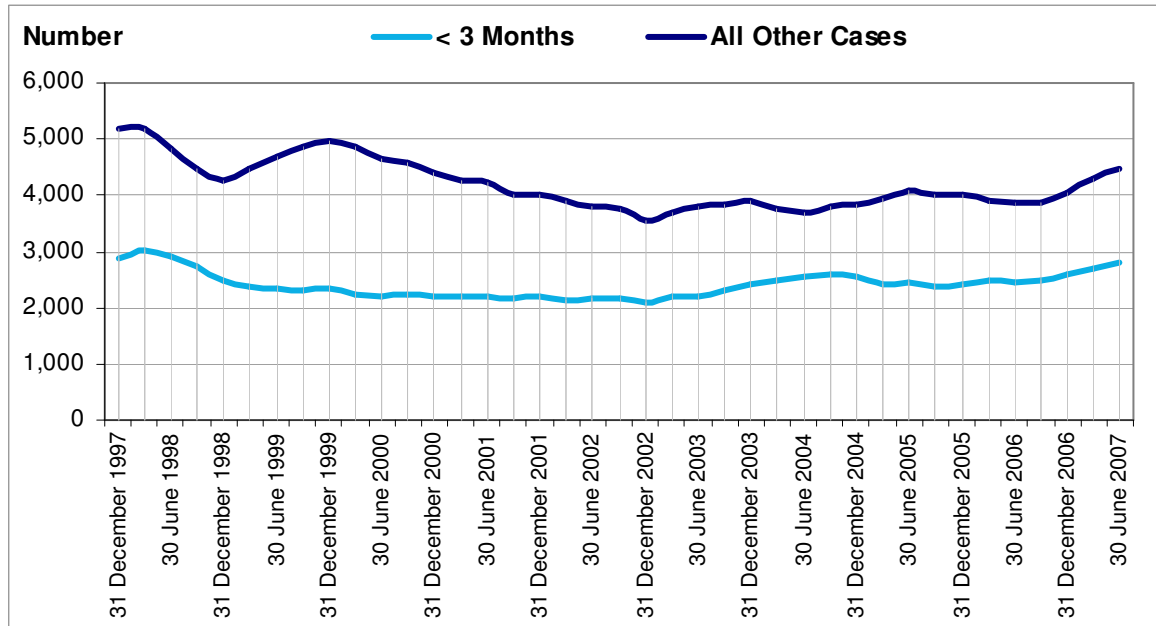


Source: CP4

- Since 31 December 1997, the average number of assessments commenced in respect of priority cases, has increased by 64%, from 3,422 in 31 December 1997 to 5,628 in 30 June 2007. The average number of priority case assessments commenced within 2 weeks increased by 51%, from 2,012 in 31 December 1997 to 3,036 in 30 June 2007.

Section C: Assessments Commenced

Figure C.6: Assessments Commenced in Respect of Other Cases (31 December 1997 - 30 June 2007)



Source: CP4

- Since 31 December 1997, the average number of assessments commenced in respect of other cases decreased by 14%, from 5,197 at 31 December 1997 to 4,485 at 30 June 2007.
- During the same period, the average number of other case assessments commenced within 3 months of referral, decreased by 3%, from 2,886 at 31 December 1997 to 2,791 at 30 June 2007.

Technical Notes

1. Occupational therapists treat people with physical and/or psychological illness or disability in order to enable them to reach their maximum level of function and independence in all aspects of life. They assess their physical, psychological and social functions and involve them in a structured programme of treatment designed to help overcome disability.
2. Referrals relate to the total number of referrals to occupational therapists for assessment from all sources during the relevant quarter. Sources of referral may be general practitioners, other Health and Personal Social Services personnel such as community nurses or social workers, the Northern Ireland Housing Executive or others such as Education and Library Boards.
3. Referrals are split into Priority and Other cases. Priority cases are defined as those being discharged from hospital and at risk, those living alone and at risk, those living with a carer who is disabled or elderly, and those who are terminally ill.
4. Assessments by community occupational therapists normally take place to determine the type of housing adaptation (which may be either a major or minor adaptation) or equipment which the service user needs to help them to reach their maximum level of function or independence. It should be noted that not all assessments result in a recommendation for a housing adaptation or item of equipment. An assessment for housing adaptation can only be designated as such when the assessment is completed.
5. Time waiting for assessment refers to the time from receipt of the referral, regardless of whether the referral is in writing or not.
6. Commencement of assessment refers to the time of the first visit to the service user's home.
7. The information in this publication relates to persons aged 19 and over in the Elderly Care and Physical & Sensory Disability Programmes of Care. Programmes of Care are divisions of health care, into which activity and finance data are assigned, so as to provide a common management framework. They are used to plan and monitor the health service by allowing performance to be measured, targets set and services managed on a comparative basis. There are nine Programmes of Care in total.
8. The source of the information is the quarterly return CP4.
9. In accordance with the Review of Public Administration with effect from the 1st April 2007, five new integrated Health and social Care Trusts (Belfast, Northern, South Eastern, Southern, and Western) replaced the previous eighteen provider Trusts in Northern Ireland. Where applicable tables have been presented based on the new Trust Areas.
10. Some of the data may be provisional and subject to revision in subsequent quarters.

Additional Information

Further information on Assessments by Occupational Therapists in Northern Ireland are available from:

Kieran Taggart

Community Information Branch
Department of Health, Social Services, and Public Safety
Annex 2
Castle Buildings
Stormont Estate
BT4 3SQ



(028) 90 522493

FAX: (028) 90 523288

EMAIL: Kieran.taggart@dhsspsni.gov.uk

Additional Copies of this statistical bulletin, are available by contacting:

Community Information Branch
Department of Health, Social Services, and Public Safety
Annex 2
Castle Buildings
Stormont Estate
BT4 3SQ



(028) 90 522960

FAX: (028) 90 523288

EMAIL: CIB@dhsspsni.gov.uk

Alternatively, this statistical bulletin and other statistical bulletins published by Community Information Branch (CIB) are available to download free from the internet at:

Internet address: http://www.dhsspsni.gov.uk/index/stats_research/stats-cib/stats-cib_pubs.htm