



Assessments by Community Occupational Therapists in Northern Ireland - 31 March 2007

This statistical bulletin presents information on assessments by Occupational Therapists in Northern Ireland for the quarter ending 31 March 2007. It monitors information on referrals for assessment, waiting times for assessment, and assessments commenced during the quarter. Information is collected using the quarterly CP4 return.

15 June 2007

Theme:

**Assessments by
Community Occupational
Therapists in Northern
Ireland**

Issued by:

Community Information
Branch,
Information & Analysis
Directorate,
Department of Health,
Social Services & Public
Safety,
Stormont Estate,
Belfast, BT4 3SQ

Contact Person:

Nichola Kane
(028 905 22960)

Email

Nichola.Kane@dhsspsni.gov.uk

Internet

http://www.dhsspsni.gov.uk/index/stats_research/stats-cib/stats-cib_pubs.htm

Main Findings

Persons Waiting for Assessment

- At 31 March 2007, 7,345 people were waiting for assessment by community occupational therapists, 502 (6%) less than the number waiting at the end of the previous quarter, and 1,028 (12%) less than the number waiting at the end of the corresponding quarter last year.
- Of those waiting for assessment by community occupational therapists at 31 March 2007, 1,779 (24%) were priority cases and 5,566 (76%) were other cases.
- Since 31 December 2006, the number of priority cases waiting for assessment increased by 49 (3%), and the number of other (non-priority) cases decreased by 551 (9%).
- Over the last year from 31 March 2006, the number of priority cases waiting assessment decreased by 675 (28%), whilst the number of other cases decreased by 353 (6%).
- Over two thirds (69%) of priority cases and 50% of other cases had been waiting less than 3 months for assessment at 31 March 2007.
- Since 31 March 2006, the proportion of priority cases waiting 6 months or more for assessment decreased by 11 percentage points.
- Since 30 September 1997, the number of people waiting for assessment has increased by 6%, from 7,601 at 30 September 1997 to 8,022 at 31 March 2007.

Referrals for Assessment

- During the quarter ending 31 March 2007, there were 13,070 referrals for assessment by community occupational therapists, 1,041 (9%) more than during the previous quarter, and 1,548 (13%) more than the corresponding figure at 31 March 2006.
- During the quarter ending 31 March 2007, 15% of all referrals for assessment by community occupational therapists were from GP's, 5% from NIHE, 52% from the other HPSS sources, and 28% from other sources.
- Between 30 September 1997 and 31 March 2007, the average number of referrals for assessment increased by 6%, from 11,399 in 30 September 1997 to 12,097 at 31 March 2007.

Assessments Commenced

- During the quarter ending 31 March 2007, 10,814 assessments were commenced by community occupational therapists, an increase of 10% (1,007) on the number commenced during the previous quarter, and 12% (1,137) more than the number commenced during the same quarter last year.
- Over half (55%) of assessments in respect of priority cases met the Charter Standard by commencing within 2 weeks of the referral, 17% in 2 weeks to 1 month, and 28% in 1 month or more.
- Over half (56%) of assessments in respect of other cases met the Charter Standard by commencing within 3 months of the referral, 13% in 3 to 6 months, and 31% in 6 months or more.
- Between 30 September 1997 and 31 March 2007, the average number of assessments commenced has increased by 16%, from 8,452 to 9,835.

Contents

	Page
Section A: Persons Waiting Assessment	1
Numbers of People Waiting Assessment.....	1
Length of Time Waiting.....	3
Number Waiting by Trust.....	5
Trends.....	7
Section B: Referrals	9
Number of Referrals for Assessment.....	9
Source of Referral.....	10
Number of Referrals during Year.....	12
Trends.....	13
Section C: Assessments Commenced	14
Number of Assessments Commenced.....	14
Length of Time from Referral.....	15
Assessments Commenced by Trust.....	17
Number of Assessments Commenced during Year.....	18
Trends.....	20
Appendix 1 : Waits for Assessments.....	23
Appendix 2 : Referrals for Assessment.....	24
Appendix 3 : Assessments Commenced.....	25
Technical Notes.....	26
Additional Information.....	27

Section A: Persons Waiting for Assessment

Number of Persons Waiting for Assessment

Table A.1 provides an analysis of the number of persons waiting for assessment by community

occupational therapists, according to whether these were priority cases or other cases.

Table A.1: Persons Waiting for Assessment

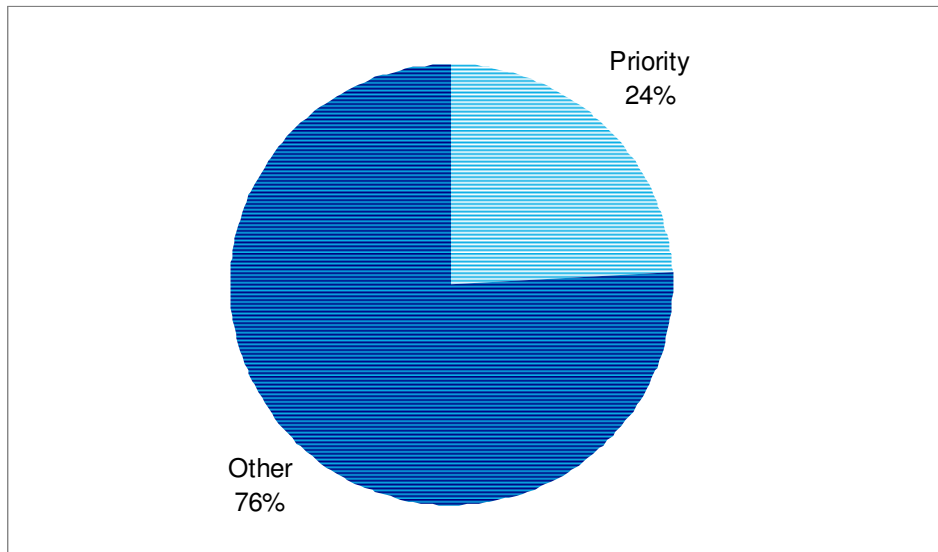
	Quarter Ending:			Quarterly Change	Annual Change
	31 March 2007	31 December 2006	31 March 2006		
Priority Cases	1,779	1,730	2,454	49	-675
Other Cases	5,566	6,117	5,919	-551	-353
All Persons Waiting	7,345	7,847	8,373	-502	-1,028

Source: CP4

- At 31 March 2007, 7,345 people were waiting for assessment by community occupational therapists, 502 (6%) less than the number waiting at the end of the previous quarter, and 1,028 (12%) less than the number waiting at the end of the corresponding quarter last year.
- Of those waiting for assessment by community occupational therapists at 31 March 2007, 1,779 (24%) were priority cases and 5,566 (76%) were other cases.
- Since 31 December 2006, the number of priority cases waiting for assessment increased by 49 (3%), and the number of other (non-priority) cases decreased by 551 (9%).
- Over the last year from 31 March 2006, the number of priority cases waiting assessment decreased by 675 (28%), whilst the number of other cases decreased by 353 (6%).

Section A: Persons Waiting for Assessment

Figure A.1: Persons Waiting for Assessment by Community Occupational Therapists, according to Priority and Other Cases (Quarter Ending 31 March 2007)



Source: CP4

Section A: Persons Waiting for Assessment

Persons Waiting for Assessment by Length of Time Waiting

Table A.2 shows the number of persons waiting for assessment, by length of time waiting, for the current quarter, previous quarter and

corresponding quarter last year. This is shown for priority cases, other cases and all cases.

Table A.2 (a): Priority Cases Waiting for Assessment by Time Waiting and Quarter

	Quarter Ending:			Quarterly Change	Annual Change
	31 March 2007	31 December 2006	31 March 2006		
Under 1 month	656	465	683	191	-27
1 month - under 3 months	573	547	644	26	-71
3 months - under 6 months	316	298	541	18	-225
6 months and over	234	420	586	-186	-352
All Priority Cases	1,779	1,730	2,454	49	-675

Source: CP4

Table A.2 (b): Other Cases Waiting for Assessment by Time Waiting and Quarter

	Quarter Ending:			Quarterly Change	Annual Change
	31 March 2007	31 December 2006	31 March 2006		
Under 1 month	1,311	904	1,133	407	178
1 month - under 3 months	1,481	1,534	1,074	-53	407
3 months - under 6 months	1,235	1,356	1,184	-121	51
6 months and over	1,539	2,323	2,528	-784	-989
All Other Cases	5,566	6,117	5,919	-551	-353

Source: CP4

Section A: Persons Waiting for Assessment

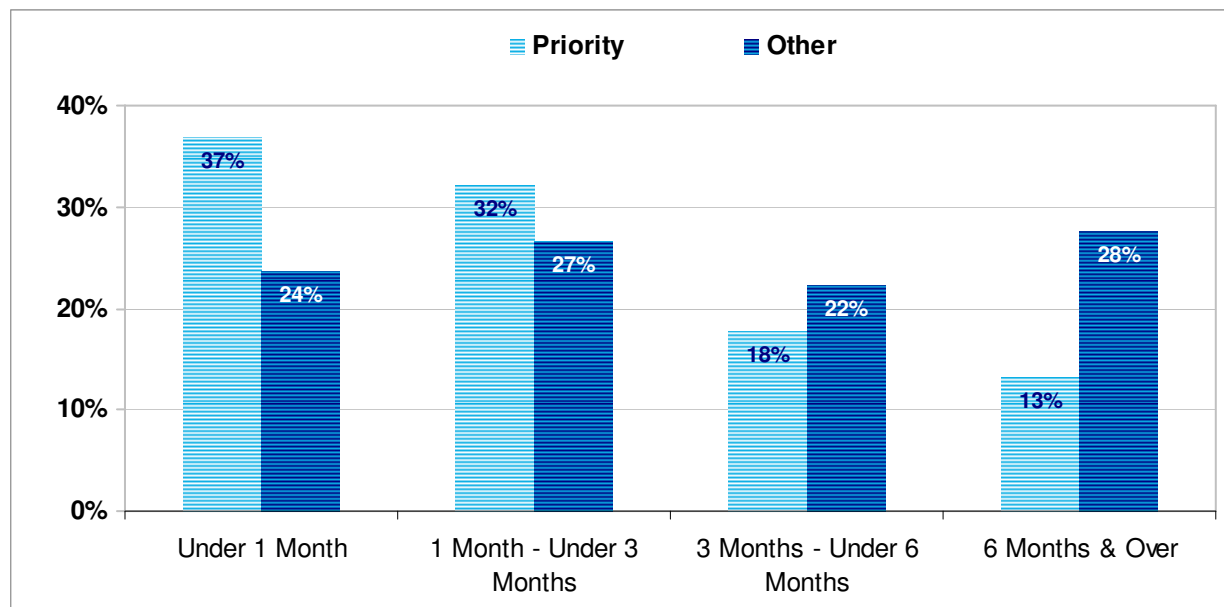
Table A.2 (c): All Cases Waiting for Assessment by Time Waiting and Quarter

	Quarter Ending:			Quarterly Change	Annual Change
	31 March 2007	31 December 2006	31 March 2006		
Under 1 month	1,967	1,369	1,816	598	151
1 month - under 3 months	2,054	2,081	1,718	-27	336
3 months - under 6 months	1,551	1,654	1,725	-103	-174
6 months and over	1,773	2,743	3,114	-970	-1,341
All Cases	7,345	7,847	8,373	-502	-1,028

Source: CP4

- At 31 March 2007, almost one quarter (24%) of all people waiting for assessment had been waiting for 6 months or more, compared with 35% at the end of the previous quarter and 37% at 31 March 2006.
- Since the end of the previous quarter, the number of people waiting for assessment decreased by 502, with the most significant decrease in those waiting 6 months or more for assessment for assessment (970).

Figure A.2: Persons Waiting for Assessment by Length of Time and according to Priority and Other Cases (Quarter Ending 31 March 2007)



Source: CP4

- Over two thirds (69%) of priority cases and 50% of other cases had been waiting less than 3 months for assessment at 31 March 2007.
- Since 31 March 2006, the proportion of priority cases waiting 6 months or more for assessment decreased by 11 percentage points.

Section A: Persons Waiting for Assessment

Persons Waiting for Assessment by HSS Trust

Table A.3 shows, for each Trust, the number of persons waiting according to priority and other cases, and the number and percentage waiting for six

months or more. Alternatively, information has been presented in Appendix 1 (p.23) to show information by new Health & Social Care Trusts.

Table A.3: Persons Waiting for Assessment by HSS Trust at 31 March 2007

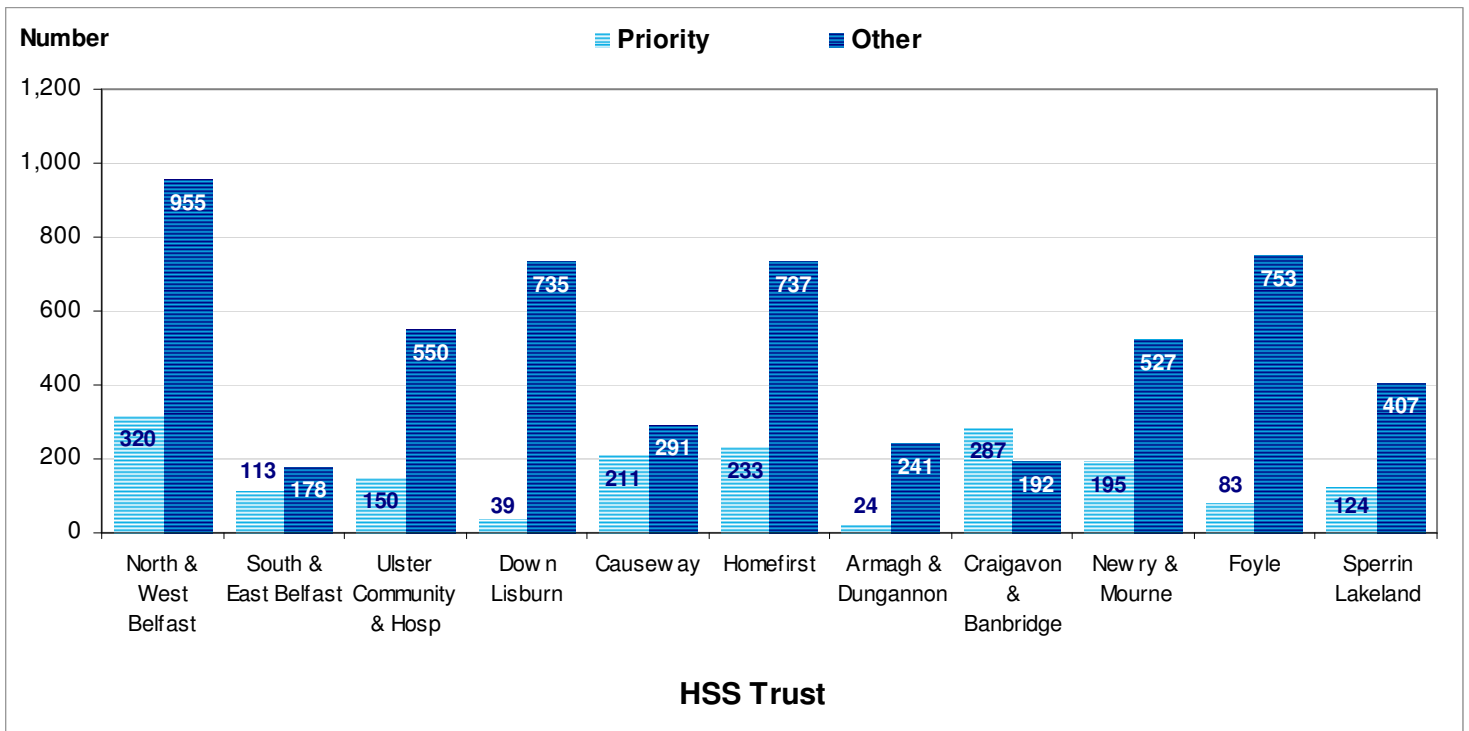
Trust	Priority Cases			Other Cases		
	Total Waiting	Number Waiting 6 Months or More	Percentage Waiting 6 Months or More	Total Waiting	Number Waiting 6 Months or More	Percentage Waiting 6 Months or More
North & West Belfast	320	2	1%	955	87	9%
South & East Belfast	113	0	0%	178	0	0%
Ulster Community & Hosp	150	0	0%	550	68	12%
Down Lisburn	39	10	26%	735	254	35%
Causeway	211	37	18%	291	145	50%
Homefirst	233	4	2%	737	41	6%
Armagh & Dungannon	24	0	0%	241	41	17%
Craigavon & Banbridge	287	114	40%	192	76	40%
Newry & Mourne	195	60	31%	527	389	74%
Foyle	83	7	8%	753	253	34%
Sperrin Lakeland	124	0	0%	407	185	45%
Northern Ireland	1,779	234	13%	5,566	1,539	28%

Source: CP4

- Across HSS Trusts, North & West Belfast Trust had the highest number of people waiting for assessment designated priority (320) and the highest number waiting assessment for other cases (955).
- At 31 March 2007, Craigavon & Banbridge had the highest proportion of priority cases (40%) waiting 6 months or more for assessment, and Newry & Mourne had the highest proportion of other cases (74%) waiting 6 months or more for assessment.

Section A: Persons Waiting for Assessment

Figure A.3: Persons Waiting for Assessment by Community Occupational Therapists by HSS Trust and according to Priority and Other Cases (Quarter Ending 31 March 2007)



Source: CP4

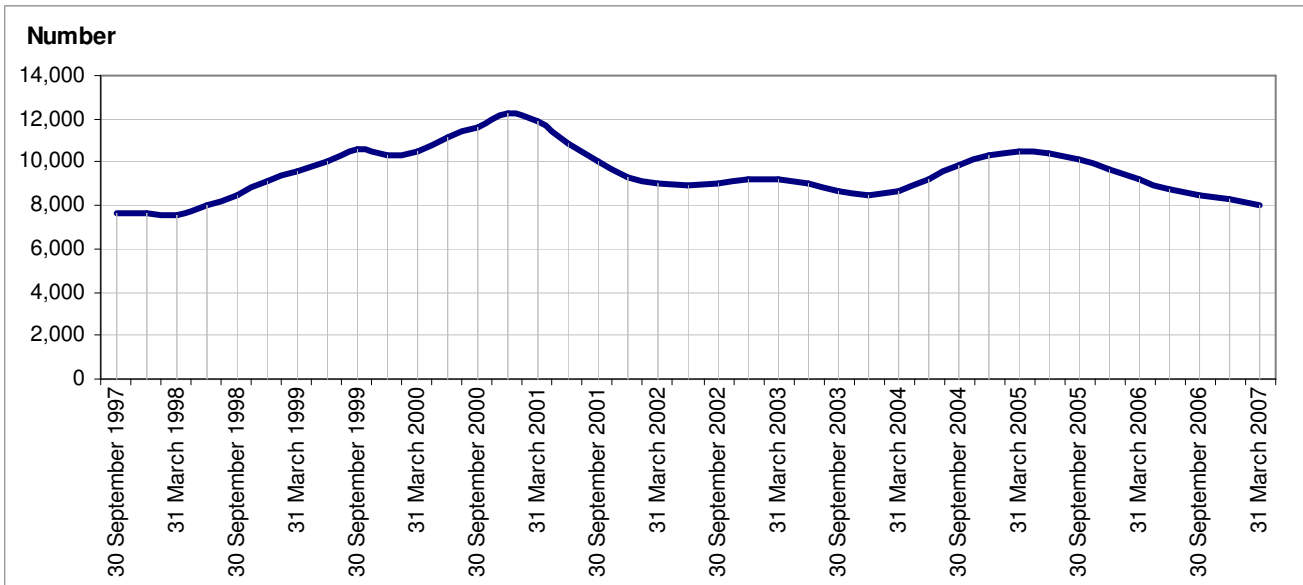
Section A: Persons Waiting for Assessment

Persons Waiting for Assessment Since 30 September 1997

The trends described in this section are based on the averages of figures for four quarters. For example, the

figure for 31 March 2007 is based on the average of the figures for the four quarters ending 31 March 2007.

Figure A.4: All Persons Waiting for Assessment by Community Occupational Therapists (30 September 1997 – 31 March 2007)

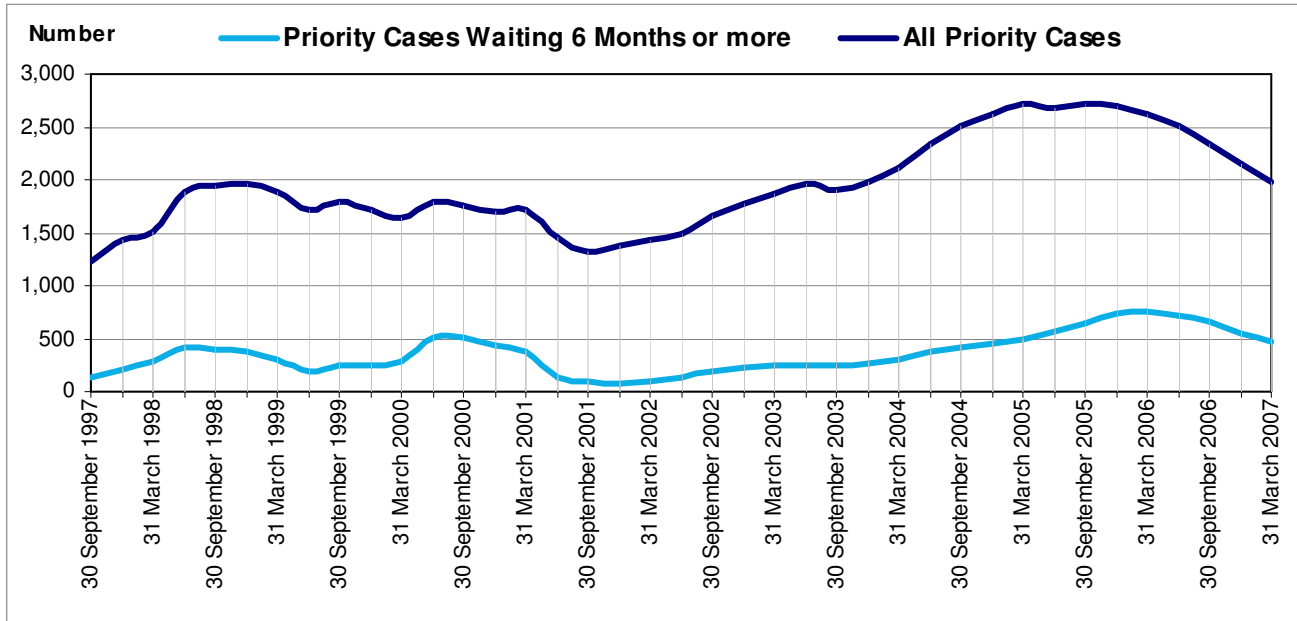


Source: CP4

- Since 30 September 1997, the number of people waiting for assessment has increased by 6%, from 7,601 at 30 September 1997 to 8,022 at 31 March 2007 .
- Between 30 September 1997 and 31 March 2007 , the highest average number of people waiting for assessment was 12,232 at 31 December 2000, whilst the lowest average number of people waiting for assessment was 7,586 at 31 March 1998.

Section A: Persons Waiting for Assessment

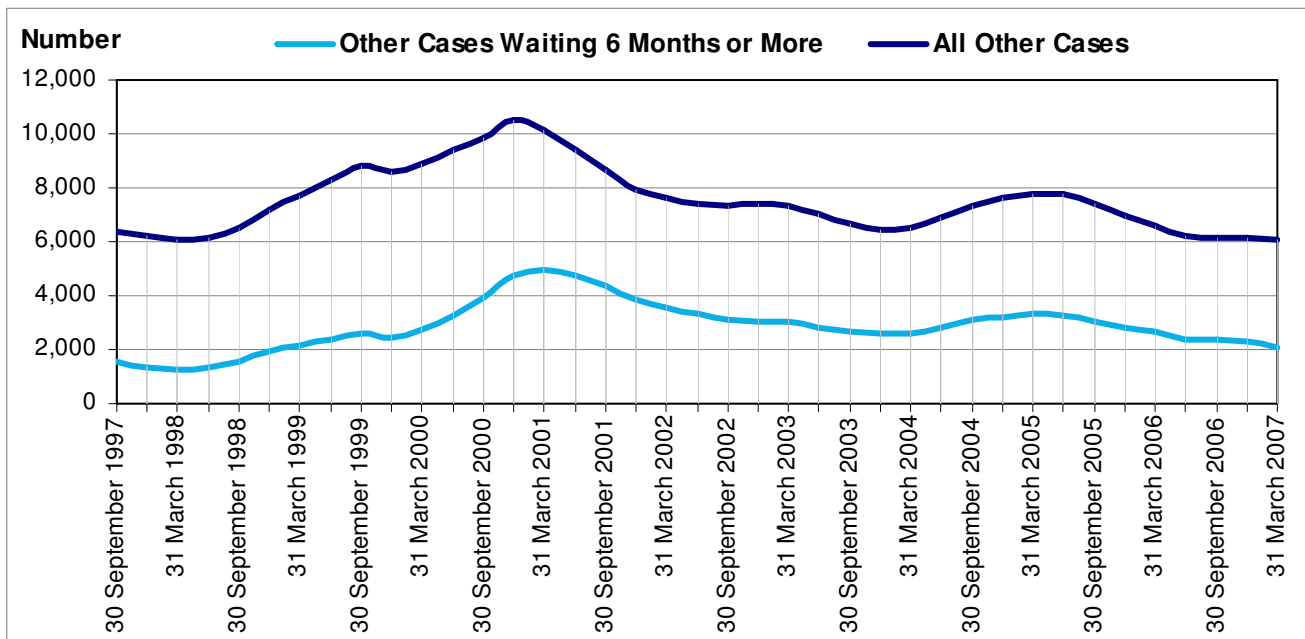
Figure A.5: Priority Cases Waiting for Assessment by Community Occupational Therapists (30 September 1997 – 31 March 2007)



Source: CP4

- The number of priority cases waiting 6 months or more has decreased steadily since 31 December 2005.

Figure A.6: Other Cases Waiting for Assessment by Community Occupational Therapists (30 September 1997 – 31 March 2007)



Source: CP4

Section B: Referrals for Assessment

Number of Referrals for Assessment

An analysis of the number of referrals for assessment by community occupational therapists, according to whether these were in respect of

priority cases or other cases, for the quarter ending 31 March 2007, is shown in Table B.1.

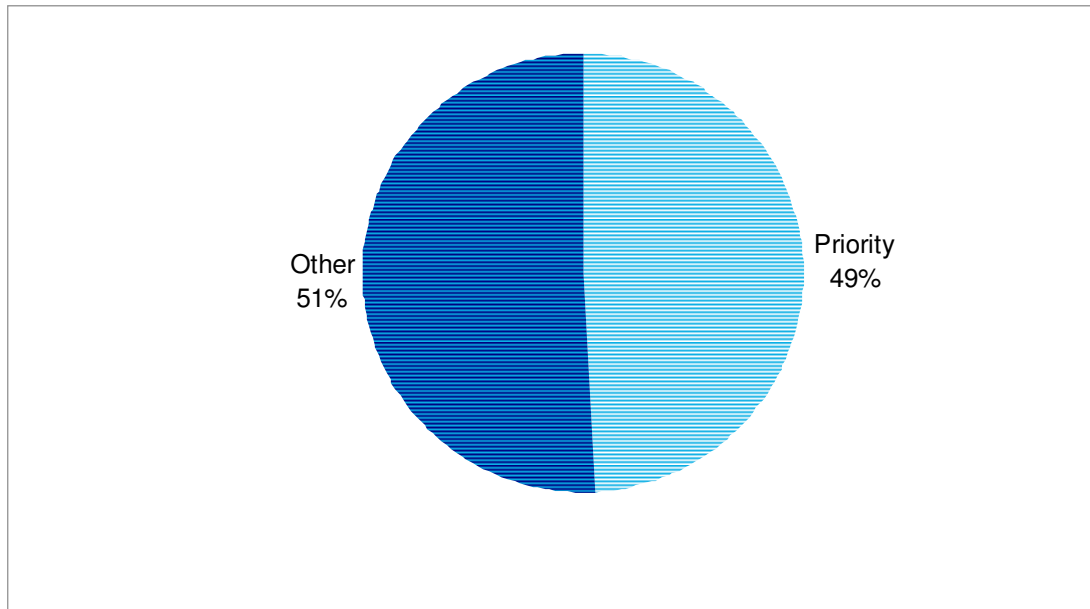
Table B.1: Number of Referrals Received for Assessment by Quarter

	Quarter Ending:			Quarterly Change	Annual Change
	31 March 2007	31 December 2006	31 March 2006		
Priority Cases	6,410	6,033	6,286	377	124
Other Cases	6,660	5,996	5,236	664	1,424
All Referrals	13,070	12,029	11,522	1,041	1,548

Source: CP4

- During the quarter ending 31 March 2007, there were 13,070 referrals for assessment by community occupational therapists, 1,041 (9%) more than during the previous quarter, and 1,548 (13%) more than the corresponding figure at 31 March 2006.

Figure B.1: Referrals according to Priority and Other Cases (Quarter Ending 31 March 2007)

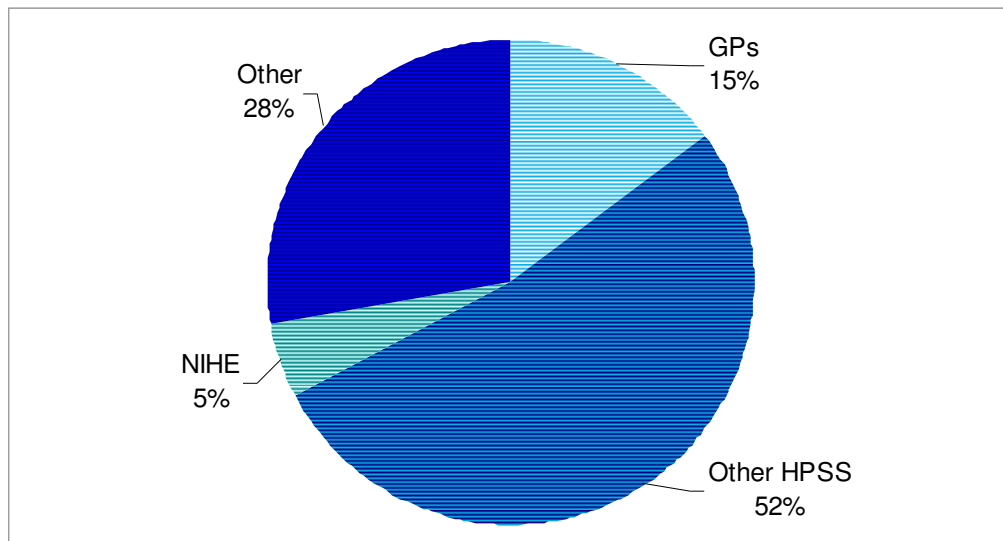


Source: CP4

Section B: Referrals for Assessment

Source of Referrals for Assessment

Figure B.2: Source of Referrals for Assessment (Quarter Ending 31 March 2007)

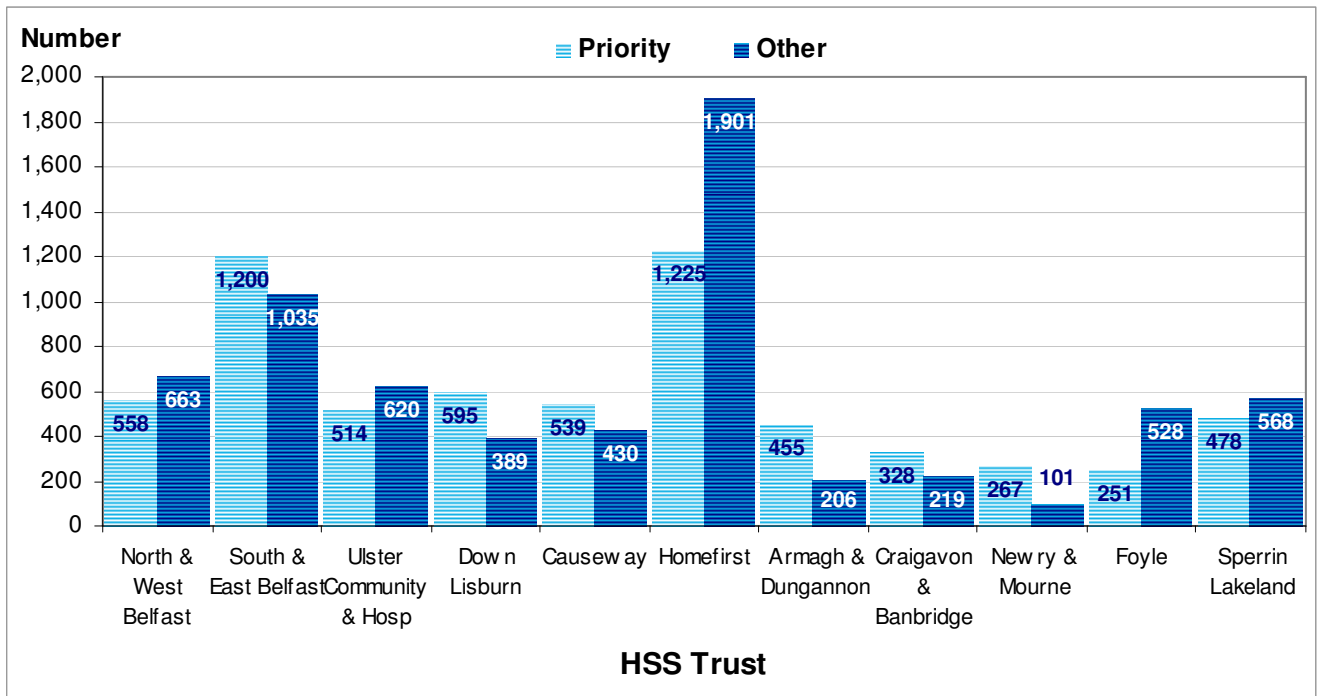


Source: CP4

- During the quarter ending 31 March 2007, 15% of all referrals for assessment by community occupational therapists were from GP's, 5% from NIHE, 52% from the other HPSS sources, and 28% from other sources.

Section B: Referrals for Assessment

Figure B.3: Referrals for Assessment according to Priority and Other Cases by HSS Trust (Quarter Ending 31 March 2007)



Source: CP4

- Homefirst and South & East Belfast HSS Trusts (1,225 and 1,200 respectively) had the highest number of priority case referrals for assessment by occupational therapists, whilst Foyle (251) had the lowest.
- In terms of other case referrals for assessment, Homefirst (1,901) had the highest and Newry & Mourne (101) the lowest.

¹ Information is also presented in Appendix 2 to illustrate referrals for assessment according to the five new Health & Social Care Trusts.

Section B: Referrals for Assessment

Number of Referrals for Assessment during Year

Table B.2 provides an analysis of the total number of referrals, and referrals in respect of priority and other cases.

Table B.2: Number of Referrals Received for Assessment by Quarter

	Year Ending			Change	
	31 March 2007	31 March 2006	31 March 2005	2006 - 2007	2005 - 2007
Priority Cases	24,360	24,065	24,821	295	-461
Other Cases	24,027	22,823	22,613	1,204	1,414
All Referrals	48,387	46,888	47,434	1,499	953

Source: CP4

- During the year ending 31 March 2007, there were 48,387 referrals for assessment by community occupational therapists, 1,499 more than during year ending 31 March 2006, and 953 more than during the year ending 31 March 2005.
- Since 31 March 2005, the number of referrals for assessment designated as priority cases decreased by 461.

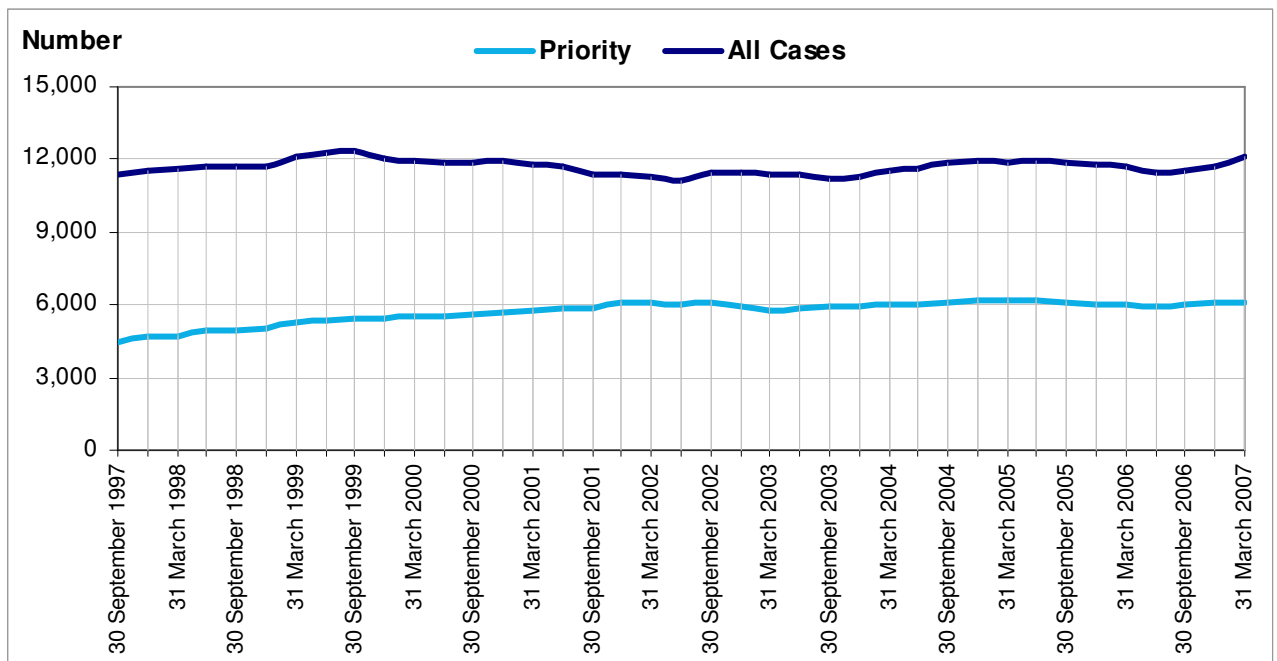
Section B: Referrals for Assessment

Referrals for Assessment Since 30 September 1997

The trends reported in this section are based on the average number of referrals for assessment for four quarters, i.e. data for 31 March 2005 is based on the average number of

referrals for the four quarters ending 31 March 2005 (31 March 2004, 30 June 2004, 30 September 2004, and 31 December 2004).

Figure B.4: Referrals for Assessment according to Priority and Other Cases (30 September 1997 - 31 March 2007)



Source: CP4

- Between 30 September 1997 and 31 March 2007, the average number of referrals for assessment increased by 6%, from 11,399 in 30 September 1997 to 12,097 at 31 March 2007.
- During this period, the average number of referrals for assessment designated as priority cases increased by 37%, from 4,432 in 30 September 1997 to 6,090 in 31 March 2007.

Section C: Assessments Commenced

Number of Assessments Commenced

Table C.1 provides an analysis of the number of assessments commenced by community occupational therapists,

according to whether these were in respect of priority cases or other cases.

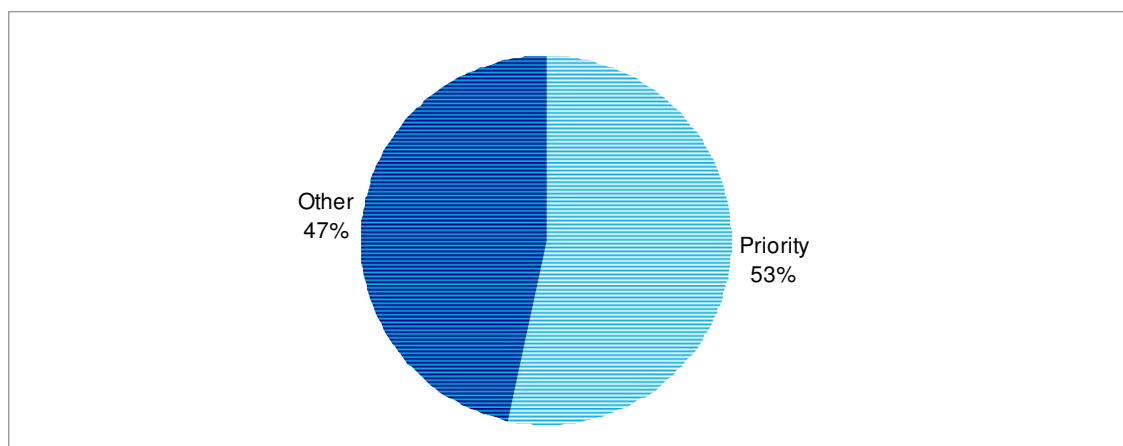
Table C.1: Number of Assessments Commenced by Quarter

	Quarter Ending:			Quarterly Change	Annual Change
	31 March 2007	31 December 2006	31 March 2006		
Priority Cases	5,775	5,360	5,676	415	99
Other Cases	5,039	4,447	4,001	592	1,038
All Assessments Commenced	10,814	9,807	9,677	1,007	1,137

Source: CP4

- During the quarter ending 31 March 2007, 10,814 assessments were commenced by community occupational therapists, an increase of 10% (1,007) on the number commenced during the previous quarter, and 12% (1,137) more than the number commenced during the same quarter last year.
- During the quarter ending 31 March 2007, a higher proportion of assessments commenced were designated priority cases (53%) than other cases (47%).
- Between the quarters ending 31 December 2006 and 31 March 2007, the number of priority case assessments commenced increased by 415 (8%), from 5,360 in 31 December 2006 to 5,775 in 31 March 2007, and the number of other case assessments commenced increased by 592 (13%), from 4,447 in 31 December 2006 to 5,039 in 31 March 2007.

Figure C.1: Assessments Commenced according to Priority and Other Cases (Quarter Ending 31 March 2007)



Source: CP4

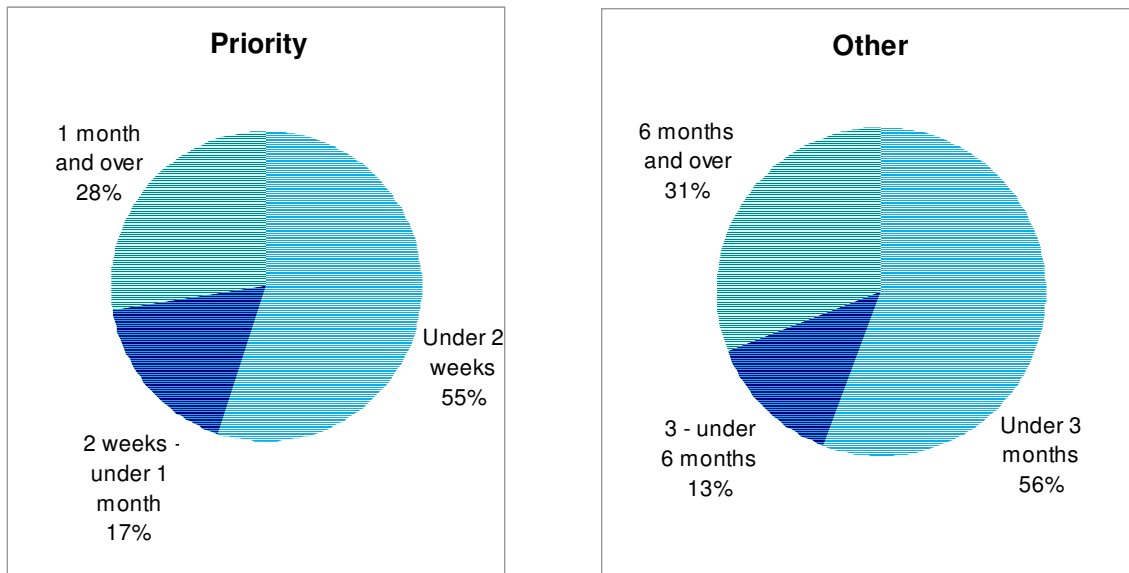
Section C: Assessments Commenced

Number of Assessments Commenced by Time from Referral (31 March 2007)

Figure C.2 provides an analysis of assessments commenced, according to length of time between referral and

start of assessment, for priority and other cases.

Figure C.2: Number of Assessments Commenced by Designation and Time from Referral (Quarter Ending 31 March 2007)



Source: CP4

- Over half (55%) of assessments in respect of priority cases met the Charter Standard by commencing within 2 weeks of the referral, 17% in 2 weeks to 1 month, and 28% in 1 month or more.
- Over half (56%) of assessments in respect of other cases met the Charter Standard by commencing within 3 months of the referral, 13% in 3 to 6 months, and 31% in 6 months or more.

Section C: Assessments Commenced

Tables C.2 (a and b) show the number of assessments commenced, by length

of time from referral, for priority cases and other cases.

Table C.2 (a): Number of Assessments in Respect of Priority Cases Commenced by Quarter and Time from Referral

	Quarter Ending:			Quarterly Change	Annual Change
	31 March 2007	31 December 2006	31 March 2006		
Under 2 weeks	3,175	2,833	3,154	342	21
2 weeks - under 1 month	1,004	846	904	158	100
1 month and over	1,596	1,681	1,618	-85	-22
All Priority Cases	5,775	5,360	5,676	415	99

Source: CP4

Table C.2 (b): Number of Assessments in Respect of Other (Non-Priority) Cases Commenced by Quarter and Time from Referral

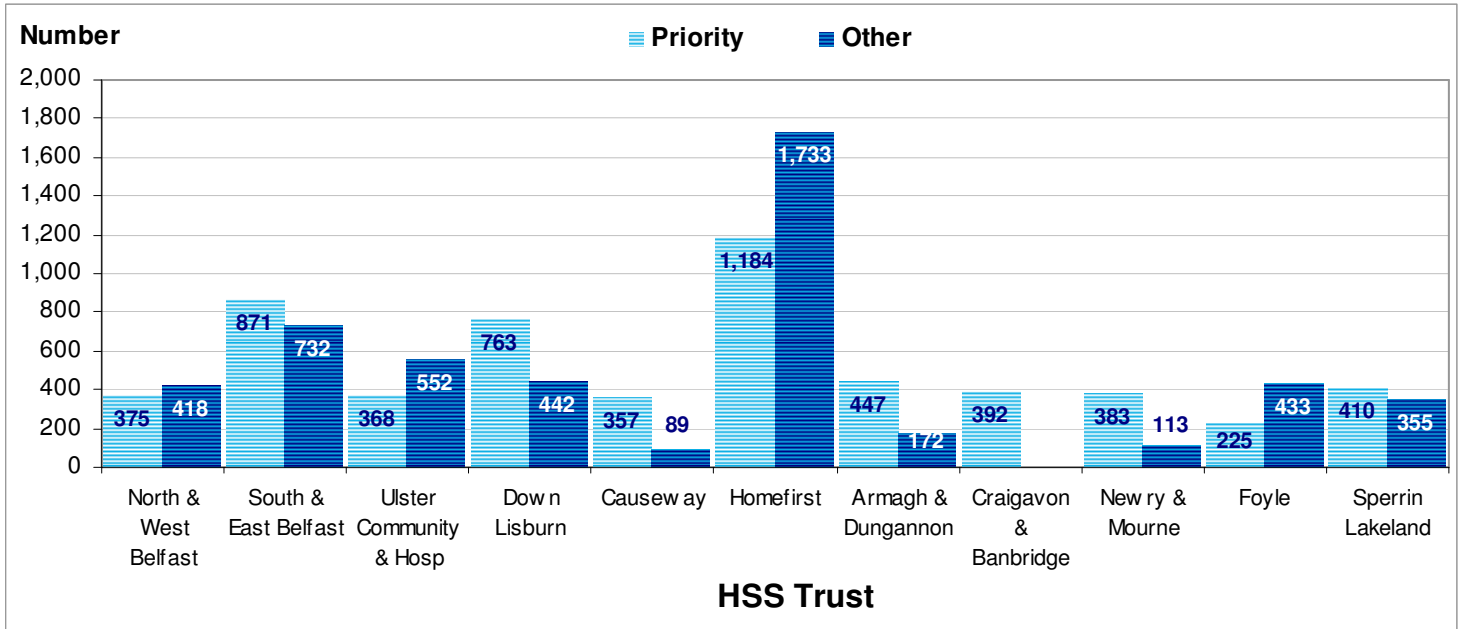
	Quarter Ending:			Quarterly Change	Annual Change
	31 March 2007	31 December 2006	31 March 2006		
Under 3 months	2,816	2,768	2,521	48	295
3 months - under 6 months	664	647	544	17	120
6 months and over	1,559	1,032	936	527	623
All Other Cases	5,039	4,447	4,001	592	1,038

Source: CP4

Section C: Assessments Commenced

Number of Assessments Commenced by HSS Trust

Figure C.3: Number of Assessments Commenced by Designation and HSS Trust (31 March 2007)



Source: CP4

- During the quarter ending 31 March 2007, Homefirst (1,184) had the highest number of assessments commenced in respect of priority cases, whilst Foyle (225) had the lowest.
- For the same period, the Homefirst (1,733) had the highest number of assessments commenced in respect of other (non-priority) cases.

¹ Information is also presented in Appendix 3 to illustrate referrals for assessment according to the five new Health & Social Care Trusts.

Section C: Assessments Commenced

Table C.4 shows, for each Trust, the number of assessments commenced according to priority and other cases, and the number and percentage commenced within the Charter Standard of two weeks for priority

cases and three months for other cases. Alternatively, information is presented in Appendix 3 to show assessments commenced by the five new Health & Social Care Trusts..

Table C.4: Number of Assessments Commenced by HSS Trust, Designation and Time from Referral (Quarter Ending 31 March 2007)

Trust	Priority Cases			Other Cases		
	Total Commenced	Number Commenced within 2 Weeks	Percentage Commenced within 2 Weeks	Total Commenced	Number Commenced within 3 Months	Percentage Commenced within 3 Months
North & West Belfast	375	182	49%	418	88	21%
South & East Belfast	871	610	70%	732	668	91%
Ulster Community & Hosp	368	219	60%	552	346	63%
Down Lisburn	763	394	52%	442	73	17%
Causeway	357	104	29%	89	7	8%
Homefirst	1,184	765	65%	1,733	1,372	79%
Armagh & Dungannon	447	395	88%	172	83	48%
Craigavon & Banbridge	392	227	58%	0	0	-
Newry & Mourne	383	61	16%	113	32	28%
Foyle	225	85	38%	433	130	30%
Sperrin Lakeland	410	133	32%	355	17	5%
Northern Ireland	5,775	3,175	55%	5,039	2,816	56%

Source: CP4

- In respect of priority cases the proportions of assessments commencing within 2 weeks in HSS Trusts, ranged from 16% in Newry & Mourne to 88% in Armagh & Dungannon.
- For non-priority (other) cases, the proportion of assessments commencing within 3 months ranged from 0% in Craigavon & Banbridge to 91% in South & East Belfast.

Section C: Assessments Commenced

Number of Assessments Completed during Year

Table C.5 provides an analysis of the total number of assessments commenced, and assessments commenced in respect of priority and

other cases, for the year ending December 2006, including a comparison with the previous year.

Table C.5: Number of Assessments Commenced by Designation and Year

	Year Ending:			Change Since 31 March 2006	Change Since 31 March 2005
	31 March 2007	31 March 2006	31 March 2005		
Priority Cases	22,167	20,633	22,825	1,534	-658
Other Cases	17,173	15,558	15,740	1,615	1,433
All Assessments Commenced	39,340	36,191	38,565	3,149	775

Source: CP4

- During the year ending 31 March 2007, 39,340 assessments commenced, 9% (3,149) more than the number commenced during year ending 31 March 2006, and 2% (775) more than the number commenced during the year ending 31 March 2005.
- Of the 39,340 assessments commenced during this period, the majority (56%) were in respect of priority cases.

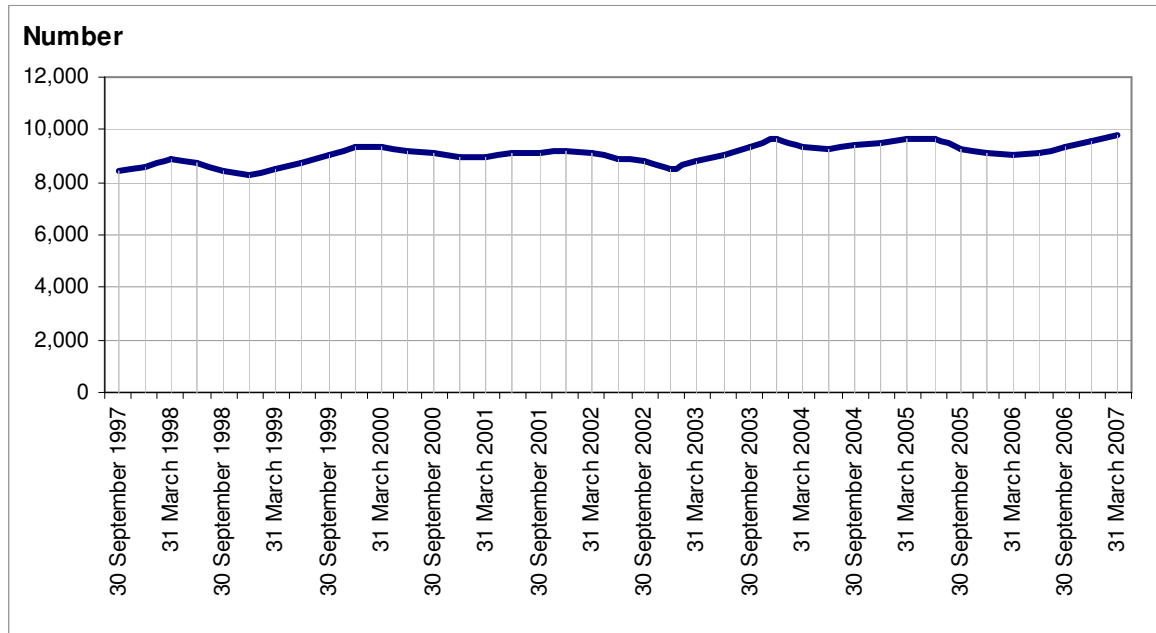
Section C: Assessments Commenced

Assessments Commenced Since 30 September 1997

The trends reported on in this section are based on the average number of referrals for assessment for the last four quarters, i.e. data for 31 December 2004 is based on the average number

of referrals for the four quarters up to and including 31 December 2004 (31 March 2004, 30 June 2004, 30 September 2004, and 31 December 2004).

Figure C.4: Assessments Commenced (30 September 1997 - 31 March 2007)

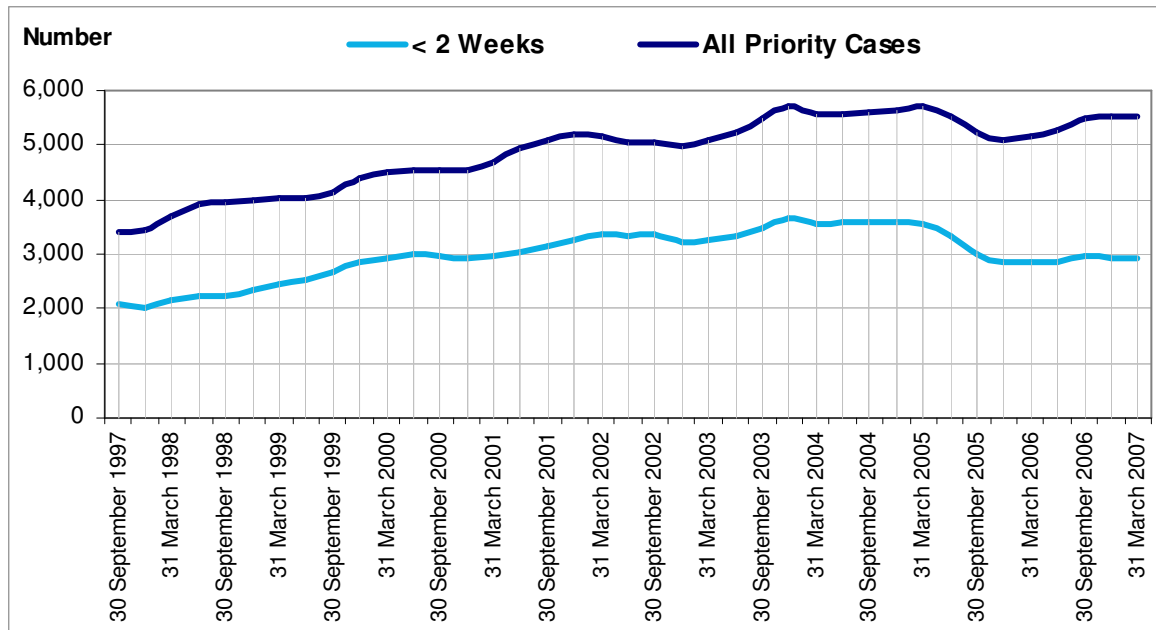


Source: CP4

- Between 30 September 1997 and 31 March 2007, the average number of assessments commenced has increased by 16%, from 8,452 to 9,835.

Section C: Assessments Commenced

Figure C.5: Assessments Commenced in Respect of Priority Cases (30 September 1997 - 31 March 2007)

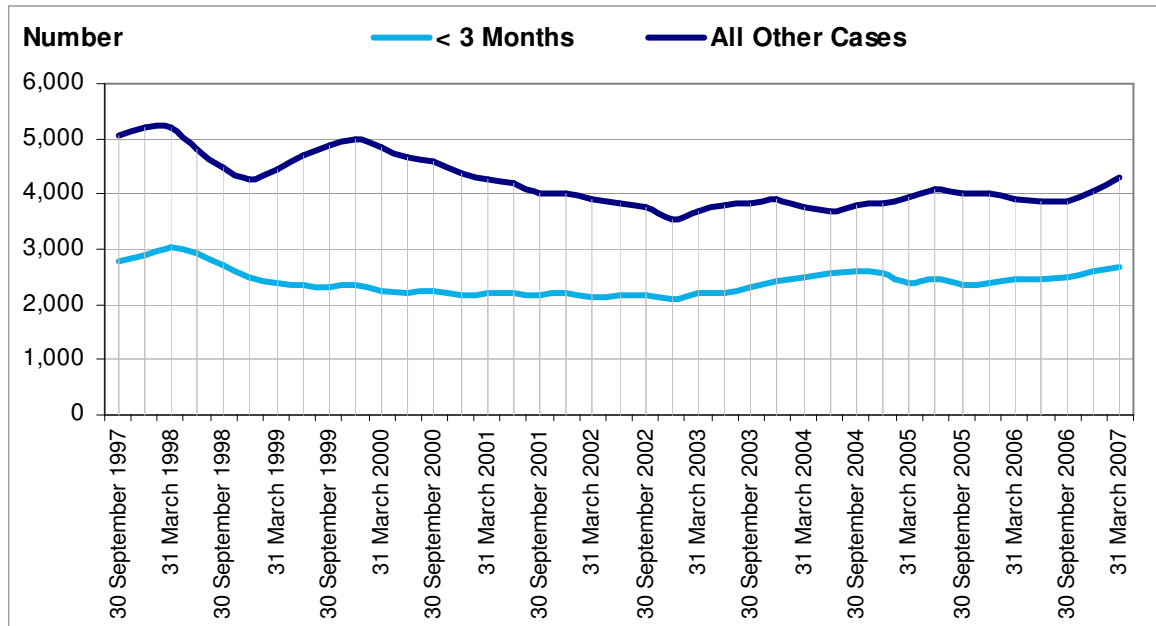


Source: CP4

- Since 30 September 1997, the average number of assessments commenced in respect of priority cases, has increased by 63%, from 3,396 in 30 September 1997 to 5,542 in 31 March 2007. The average number of assessments commenced within 2 weeks increased by 30%, from 2,074 in 30 September 1997 to 2,921 in 31 March 2007.

Section C: Assessments Commenced

Figure C.6: Assessments Commenced in Respect of Other Cases (30 September 1997 - 31 March 2007)



Source: CP4

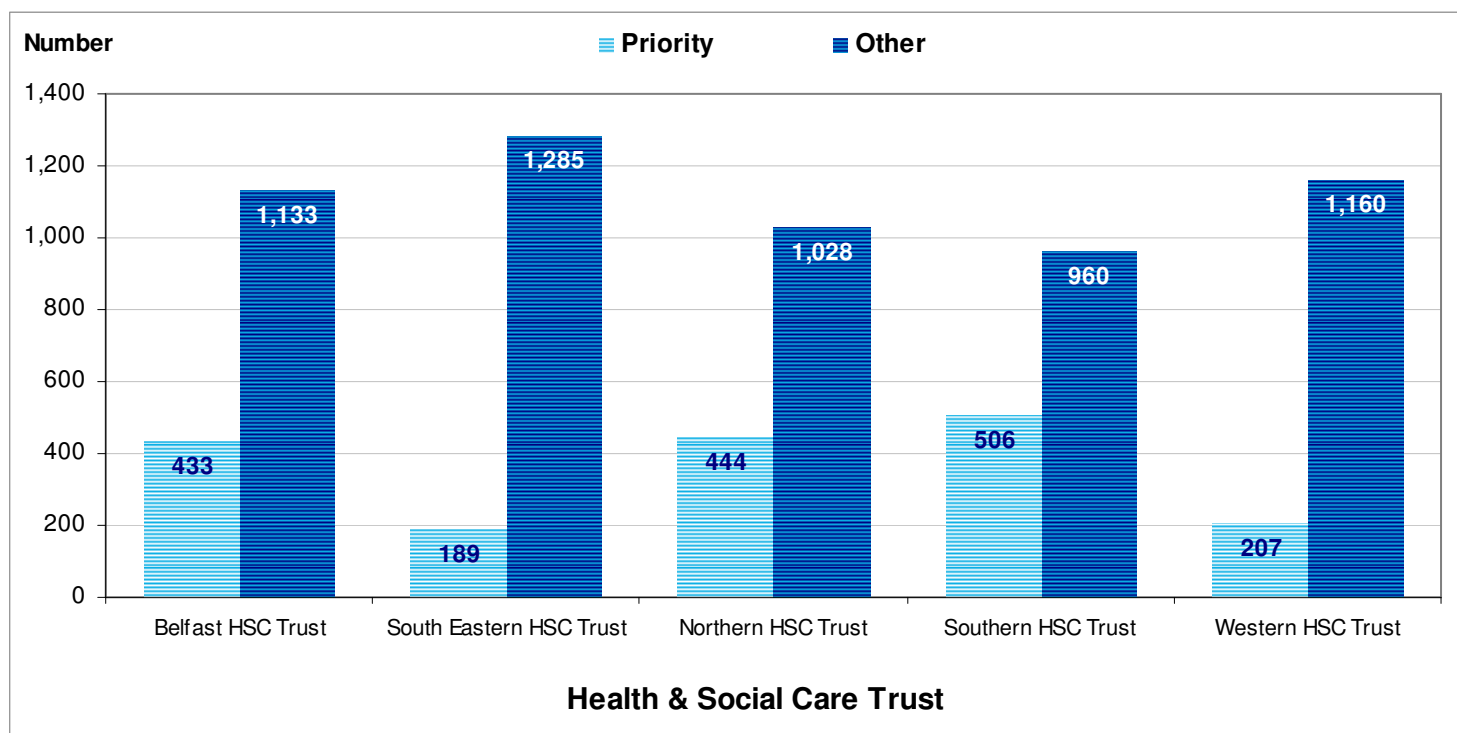
- Since 30 September 1997, the average number of assessments commenced in respect of other cases decreased by 15%, from 5,056 at 30 September 1997 to 4,293 at 31 March 2007.
- During the same period, the average number of assessments commenced within 3 months of referral decreased by 4%, from 2,789 at 30 September 1997 to 2,682 at 31 March 2007.

Appendix 1

Persons Waiting for Assessment by HSC Trust at 31 March 2007

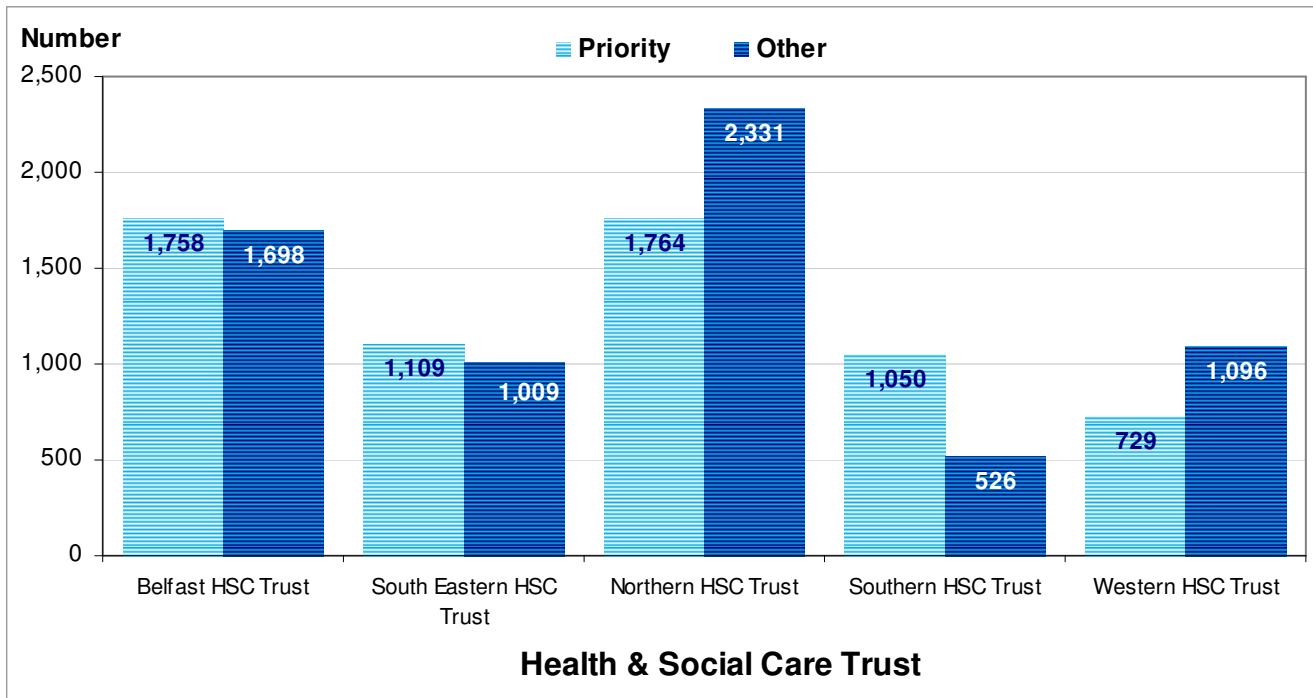
Trust	Priority Cases			Other Cases		
	Total Waiting	Number Waiting 6 Months or More	Percentage Waiting 6 Months or More	Total Waiting	Number Waiting 6 Months or More	Percentage Waiting 6 Months or More
Belfast HSC Trust	433	2	0%	1,133	87	8%
South Eastern HSC Trust	189	10	5%	1,285	322	25%
Northern HSC Trust	444	41	9%	1,028	186	18%
Southern HSC Trust	506	174	34%	960	506	53%
Western HSC Trust	207	7	3%	1,160	438	38%
Northern Ireland	1,779	234	13%	5,566	1,539	28%

Persons Waiting for Assessment by Community Occupational Therapists by HSC Trust and according to Priority and Other Cases (Quarter Ending 31 March 2007)



Appendix 2

Referrals for Assessment according to Priority and Other Cases by HSC Trust (Quarter Ending 31 March 2007)

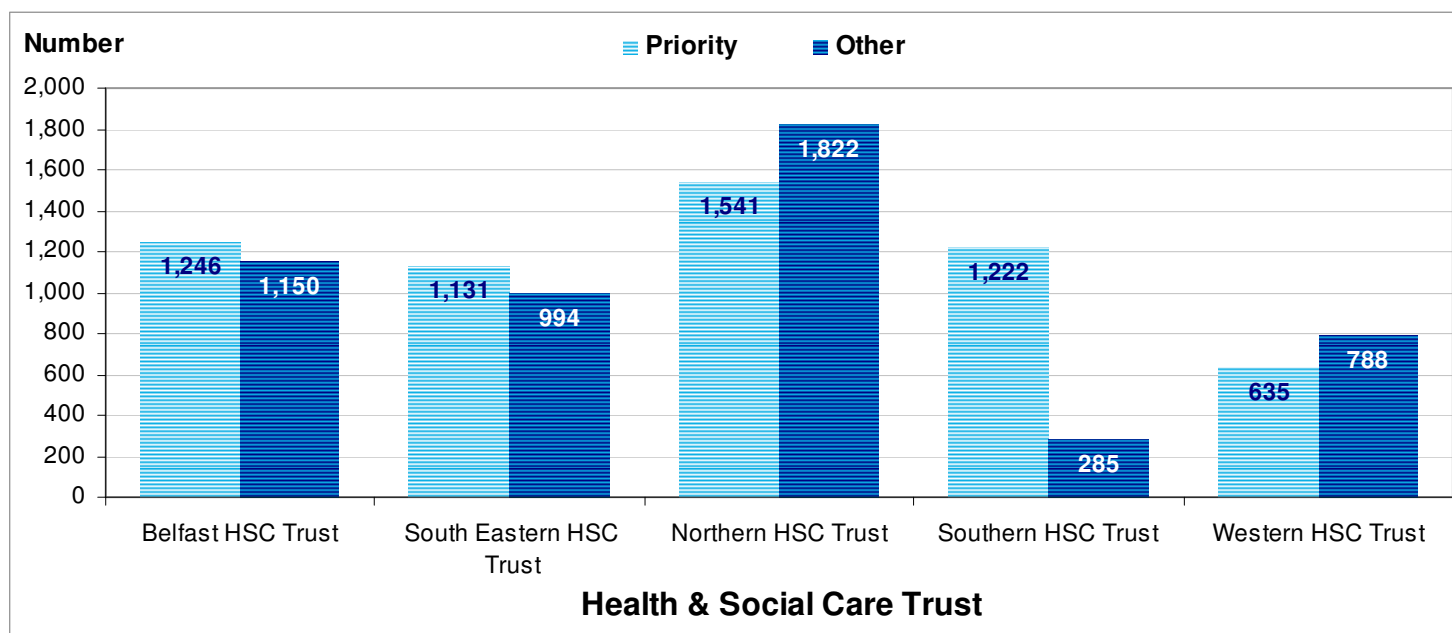


Appendix 3

Number of Assessments Commenced by HSC Trust, Designation and Time from Referral (Quarter Ending 31 March 2007)

Trust	Priority Cases			Other Cases		
	Total Commenced	Number Commenced within 2 Weeks	Percentage Commenced within 2 Weeks	Total Commenced	Number Commenced within 3 Months	Percentage Commenced within 3 Months
Belfast HSC Trust	1,246	792	64%	1,150	756	66%
South Eastern HSC Trust	1,131	613	54%	994	419	42%
Northern HSC Trust	1,541	869	56%	1,822	1,379	76%
Southern HSC Trust	1,222	683	56%	285	115	40%
Western HSC Trust	635	218	34%	788	147	19%
Northern Ireland	5,775	3,175	55%	5,039	2,816	56%

Number of Assessments Commenced by Designation and HSC Trust (31 March 2007)



Technical Notes

1. Occupational therapists treat people with physical and/or psychological illness or disability in order to enable them to reach their maximum level of function and independence in all aspects of life. They assess their physical, psychological and social functions and involve them in a structured programme of treatment designed to help overcome disability.
2. Referrals mean the total number of referrals to occupational therapists for assessment from all sources during the relevant quarter. Sources of referral may be general practitioners, other Health and Personal Social Services personnel such as community nurses or social workers, the Northern Ireland Housing Executive or others such as Education and Library Boards.
3. Referrals are split into Priority and Other cases. Priority cases are defined as those being discharged from hospital and at risk, those living alone and at risk, those living with a carer who is disabled or elderly, and those who are terminally ill.
4. Assessments by community occupational therapists normally take place to determine the type of housing adaptation (which may be either a major or minor adaptation) or equipment which the service user needs to help them to reach their maximum level of function or independence. It should be noted that not all assessments result in a recommendation for a housing adaptation or item of equipment. An assessment for housing adaptation can only be designated as such when the assessment is completed.
5. Time waiting for assessment refers to the time from receipt of the referral, regardless of whether the referral is in writing or not.
6. Commencement of assessment refers to the time of the first visit to the service user's home.
7. The Charter Standard states that, for priority cases, assessment should commence within two weeks of receipt of referral and, for other cases, assessment should commence within three months of receipt of referral.
8. The information in this publication relates to persons aged 19 and over in the Elderly Care and Physical & Sensory Disability Programmes of Care. Programmes of Care are divisions of health care, into which activity and finance data are assigned, so as to provide a common management framework. They are used to plan and monitor the health service by allowing performance to be measured, targets set and services managed on a comparative basis. There are nine Programmes of Care in total.
9. The source of the information is the quarterly return CP4.
10. Some of the data may be provisional and subject to revision in subsequent quarters.

Additional Information

Further information on Assessments by Occupational Therapists in Northern Ireland are available from:

Kieran Taggart

Community Information Branch
Department of Health, Social Services, and Public Safety
Annex 2
Castle Buildings
Stormont Estate
BT4 3SQ



(028) 90 522493

FAX: (028) 90 523288

EMAIL: Kieran.taggart@dhsspsni.gov.uk

Additional Copies of this statistical bulletin, are available by contacting:

Nichola Kane

Community Information Branch
Department of Health, Social Services, and Public Safety
Annex 2
Castle Buildings
Stormont Estate
BT4 3SQ



(028) 90 522960

FAX: (028) 90 523288

EMAIL: Nichola.Kane@dhsspsni.gov.uk

Alternatively, this statistical bulletin and other statistical bulletins published by Community Information Branch (CIB) are available to download free from the internet at:

Internet address: http://www.dhsspsni.gov.uk/index/stats_research/stats-cib/stats-cib_pubs.htm