

# Statistics Release



Department of  
**Health, Social Services  
and Public Safety**

[www.dhsspsni.gov.uk](http://www.dhsspsni.gov.uk)

AN ROINN

**Sláinte, Seirbhísí Sóisialta  
agus Sábháilteachta Poiblí**

MÄNNYSTRIE O

**Poustie, Resydènter Heisin  
an Fowk Siccar**

---

January 2010

## **Time Spent in Northern Ireland Accident and Emergency Departments: December 2009**

This release is the twenty-second of a monthly series and presents information on the time spent in Accident and Emergency (A&E) at Health and Social Care Trusts within Northern Ireland. This release reports on Trust performance across A&E Departments for the month of December, 2009.

### **Background**

The Priorities for Action (PfA) target for Northern Ireland for 2009-10 requires that, *'from April 2009, 95% of patients attending any A&E department should be either treated and discharged home, or admitted within four hours of their arrival in the department.'*

In addition, no patient should wait longer than 12 hours in A&E.

### **Overall results for December**

At Northern Ireland level, 80.7% of patients were either treated and discharged or admitted within four hours of their arrival in the department. 399 patients waited longer than 12 hours across all of the Trusts, out of a total of 55,882 attendances in December. This is in comparison to November 2009, where 83.5% of patients were either treated and discharged or admitted within four hours of their arrival and 236 patients waited longer than 12 hours across all the Trusts out of a total of 55,290 attendances.

**Results at Trust Level for December 2009****Table 1:** Time spent in an A&E Department from arrival until admission, transfer or discharge by Trust, November 2009 & December 2009.

| Health & Social Care Trust | November 2009                                |                                      | December 2009                                |                                      |
|----------------------------|--|--------------------------------------|--|--------------------------------------|
|                            | Percentage Spending 4 Hours and Under in A&E | Number Spending Over 12 Hours in A&E | Percentage Spending 4 Hours and Under in A&E | Number Spending Over 12 Hours in A&E |
| Belfast                    | 78.3%  | 37                                   | <b>73.3%</b>                                 | <b>68</b>                            |
| Northern                   | 80.5%  | 53                                   | <b>79.4%</b>                                 | <b>71</b>                            |
| South Eastern              | 84.8%  | 124                                  | <b>80.7%</b>                                 | <b>254</b>                           |
| Southern                   | 93.0%  | 0                                    | <b>91.1%</b>                                 | <b>0</b>                             |
| Western                    | 83.4%  | 22                                   | <b>84.1%</b>                                 | <b>6</b>                             |
| Northern Ireland           | 83.5%  | 236                                  | <b>80.7%</b>                                 | <b>399</b>                           |

**Results by Emergency Care/A&E Department Type<sup>1</sup> for December 2009****Table 2:** Time spent in an A&E Department from arrival until admission, transfer or discharge by Type, November 2009 & December 2009.

| A&E Department Type | November 2009                                |                                      | December 2009                                |                                      |
|---------------------|--|--------------------------------------|--|--------------------------------------|
|                     | Percentage Spending 4 Hours and Under in A&E | Number Spending Over 12 Hours in A&E | Percentage Spending 4 Hours and Under in A&E | Number Spending Over 12 Hours in A&E |
| Type 1              | 80.2%  | 229                                  | <b>77.2%</b>                                 | <b>375</b>                           |
| Type 2 <sup>2</sup> | 93.8%  | 7                                    | <b>92.5%</b>                                 | <b>24</b>                            |
| Type 3 <sup>2</sup> | 100.0%                                       | 0                                    | <b>99.9%</b>                                 | <b>0</b>                             |
| Northern Ireland    | 83.5%  | 236                                  | <b>80.7%</b>                                 | <b>399</b>                           |

<sup>1</sup> See Note 10 for list of Department Types.<sup>2</sup> See Note 11.

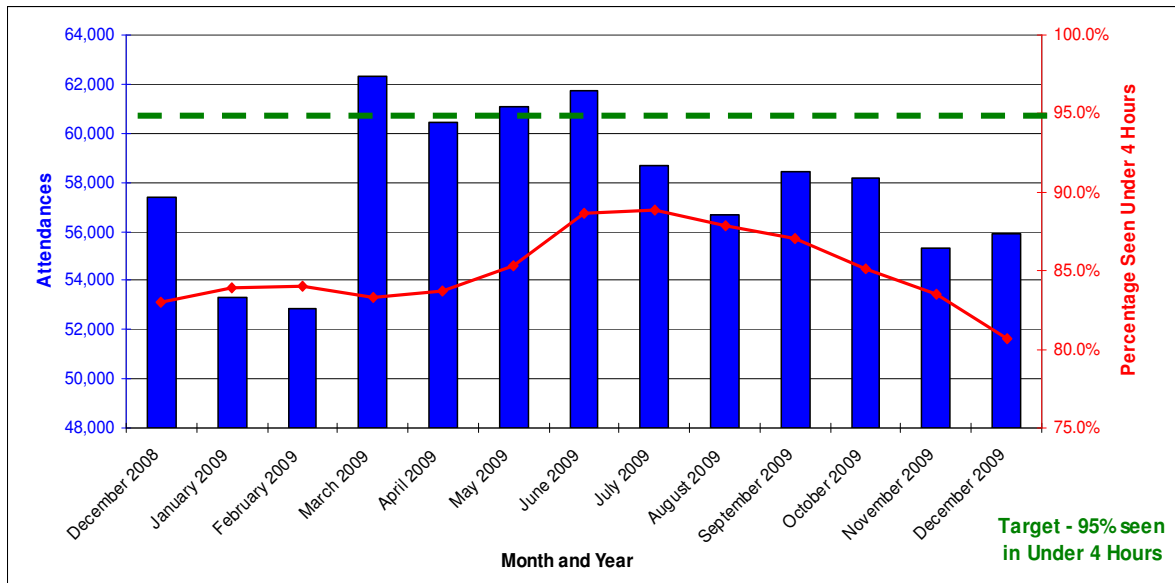
Table 3: Time spent in an A&amp;E Department from arrival until admission, transfer or discharge by Hospital, December 2009.

|                              | <b>Percentage Spending 4 hours and Under in A&amp;E</b> | <b>Number Spending Over 12 hours in A&amp;E</b> | <b>Total Attendances</b> |
|------------------------------|---|---|--------------------------|
| <b>Belfast City Hospital</b> | 61.9%   | 12  | 3,497                    |
| <b>Mater Hospital</b>        | 72.3%   | 46  | 3,316                    |
| <b>Royal Hospital</b>        | 78.0%   | 10  | 5,664                    |
| <b>RBHSC</b>                 | 78.6%   | 0   | 2,964                    |
| <b>Belfast Trust</b>         | 73.3%   | 68  | 15,441                   |
| <b>Antrim</b>                | 67.3%   | 55  | 5,495                    |
| <b>Whiteabbey</b>            | 98.1%   | 0   | 1,402                    |
| <b>Mid Ulster</b>            | 97.6%   | 0   | 1,186                    |
| <b>Causeway</b>              | 84.9%   | 16  | 3,338                    |
| <b>Northern Trust</b>        | 79.4%   | 71  | 11,421                   |
| <b>Ulster Hospital</b>       | 70.0%   | 230   | 5,943                    |
| <b>Ards MIU</b>              | 100.0%  | 0   | 593                      |
| <b>Bangor MIU</b>            | 100.0%  | 0   | 837                      |
| <b>Lagan Valley Hospital</b> | 86.5%   | 23  | 2,548                    |
| <b>Downe Hospital</b>        | 93.2%   | 1   | 1,726                    |
| <b>South Eastern Trust</b>   | 80.7%   | 254   | 11,647                   |
| <b>Craigavon Hospital</b>    | 86.7%   | 0   | 5,748                    |
| <b>Daisyhill Hospital</b>    | 95.1%   | 0   | 2,782                    |
| <b>South Tyrone Hospital</b> | 100.0%  | 0   | 1,061                    |
| <b>Armagh/Mullinure</b>      | 100.0%  | 0   | 530                      |
| <b>Southern Trust</b>        | 91.1%   | 0   | 10,121                   |
| <b>Altnagelvin</b>           | 77.0%   | 6   | 4,182                    |
| <b>Erne Hospital</b>         | 90.8%   | 0   | 2,084                    |
| <b>Tyrone County</b>         | 99.7%   | 0   | 986                      |
| <b>Western Trust</b>         | 84.1%   | 6   | 7,252                    |
| <b>Northern Ireland</b>      | 80.7%   | 399   | 55,882                   |

Table 4: Time spent in an A&amp;E Department from arrival until admission, transfer or discharge, December 2008 - December 2009, Northern Ireland.

| <b>Month</b>          | <b>Percentage Spending 4 hours and Under in A&amp;E</b> | <b>Number Spending Over 12 hours in A&amp;E</b> | <b>Total Attendances</b> |
|-----------------------|---|---|--------------------------|
| <b>December 2008</b>  | 83.0%   | 253   | 57,412                   |
| <b>January 2009</b>   | 83.9%   | 734   | 53,313                   |
| <b>February 2009</b>  | 84.1%   | 461   | 52,889                   |
| <b>March 2009</b>     | 83.3%   | 623   | 62,342                   |
| <b>April 2009</b>     | 83.7%   | 309   | 60,421                   |
| <b>May 2009</b>       | 85.3%   | 169   | 61,114                   |
| <b>June 2009</b>      | 88.7%   | 30  | 61,716                   |
| <b>July 2009</b>      | 88.9%   | 23  | 58,707                   |
| <b>August 2009</b>    | 87.9%   | 20  | 56,711                   |
| <b>September 2009</b> | 87.1%   | 48  | 58,429                   |
| <b>October 2009</b>   | 85.1%   | 46  | 58,192                   |
| <b>November 2009</b>  | 83.5%   | 236   | 55,290                   |
| <b>December 2009</b>  | 80.7%   | 399   | 55,882                   |

Figure 1: Number of Attendances at A&E Departments and Percentage that had Waits of Under 4 Hours, December 2008 - December 2009, Northern Ireland.



**Waiting Time by Emergency Care/A&E Department Type**

Table 5: Time spent in a **Type 1** A&E Department from arrival until admission, transfer or discharge by Hospital, December 2009.

|                                 | <b>Percentage Spending 4 hours and Under in A&amp;E</b> | <b>Number Spending Over 12 hours in A&amp;E</b> | <b>Total Attendances</b> |
|---------------------------------|---|---|--------------------------|
| <b>Altnagelvin</b>              | 77.0%   | 6   | 4,182                    |
| <b>Erne Hospital</b>            | 90.8%   | 0   | 2,084                    |
| <b>Antrim</b>                   | 67.3%   | 55  | 5,495                    |
| <b>Causeway</b>                 | 84.9%   | 16  | 3,338                    |
| <b>Craigavon Hospital</b>       | 86.7%   | 0   | 5,748                    |
| <b>Daisyhill Hospital</b>       | 95.1%   | 0   | 2,782                    |
| <b>Belfast City Hospital</b>    | 61.9%   | 12  | 3,497                    |
| <b>Royal Hospital</b>           | 78.0%   | 10  | 5,664                    |
| <b>Mater Hospital</b>           | 72.3%   | 46  | 3,316                    |
| <b>RBHSC</b>                    | 78.6%   | 0   | 2,964                    |
| <b>Ulster Hospital</b>          | 70.0%   | 230   | 5,943                    |
| <b>All Type 1 A&amp;E Depts</b> | 77.2%   | 375   | 45,013                   |

Table 6: Time spent in a **Type 1** A&E Department from arrival until admission, transfer or discharge, December 2008 - December 2009.

| <b>Month</b>          | <b>Percentage Spending 4 hours and Under in A&amp;E</b> | <b>Number Spending Over 12 hours in A&amp;E</b> | <b>Total Attendances</b> |
|-----------------------|---|---|--------------------------|
| <b>December 2008</b>  | 79.3%   | 250   | 45,206                   |
| <b>January 2009</b>   | 80.4%   | 728   | 41,488                   |
| <b>February 2009</b>  | 80.6%   | 456   | 41,254                   |
| <b>March 2009</b>     | 79.7%   | 573   | 49,047                   |
| <b>April 2009</b>     | 80.3%   | 277   | 47,451                   |
| <b>May 2009</b>       | 82.0%   | 164   | 47,662                   |
| <b>June 2009</b>      | 85.9%   | 29  | 47,110                   |
| <b>July 2009</b>      | 86.3%   | 22  | 45,545                   |
| <b>August 2009</b>    | 85.3%   | 20  | 44,145                   |
| <b>September 2009</b> | 84.4%   | 45  | 45,558                   |
| <b>October 2009</b>   | 82.1%   | 41  | 45,872                   |
| <b>November 2009</b>  | 80.2%   | 229   | 43,947                   |
| <b>December 2009</b>  | 77.2%   | 375   | 45,013                   |

**Figure 2:** Number of Attendances at **Type 1** A&E Departments and Percentage that had Waits of Under 4 Hours, December 2008 - December 2009, Northern Ireland.

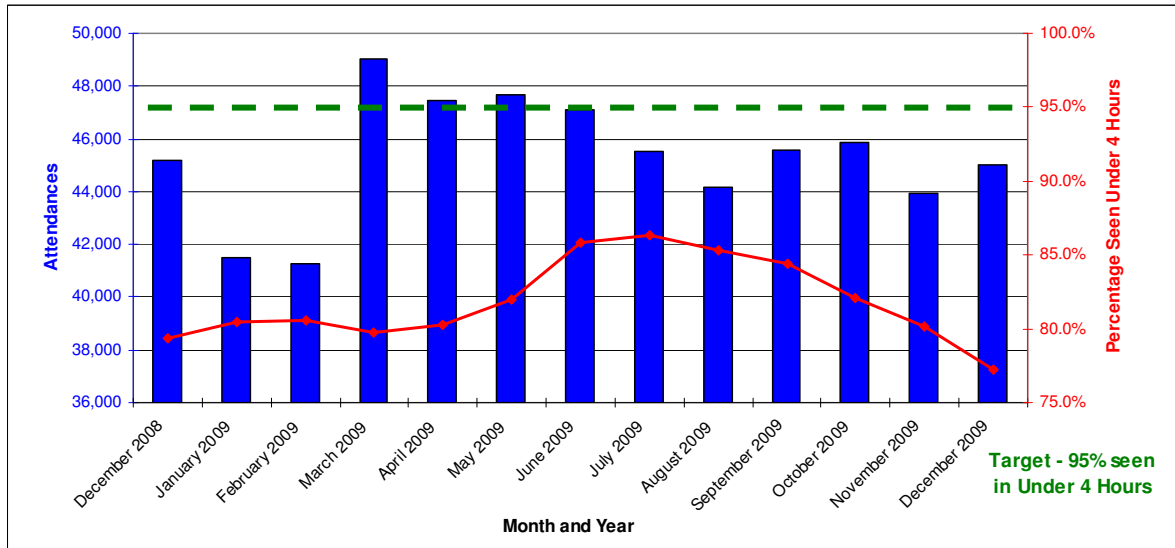


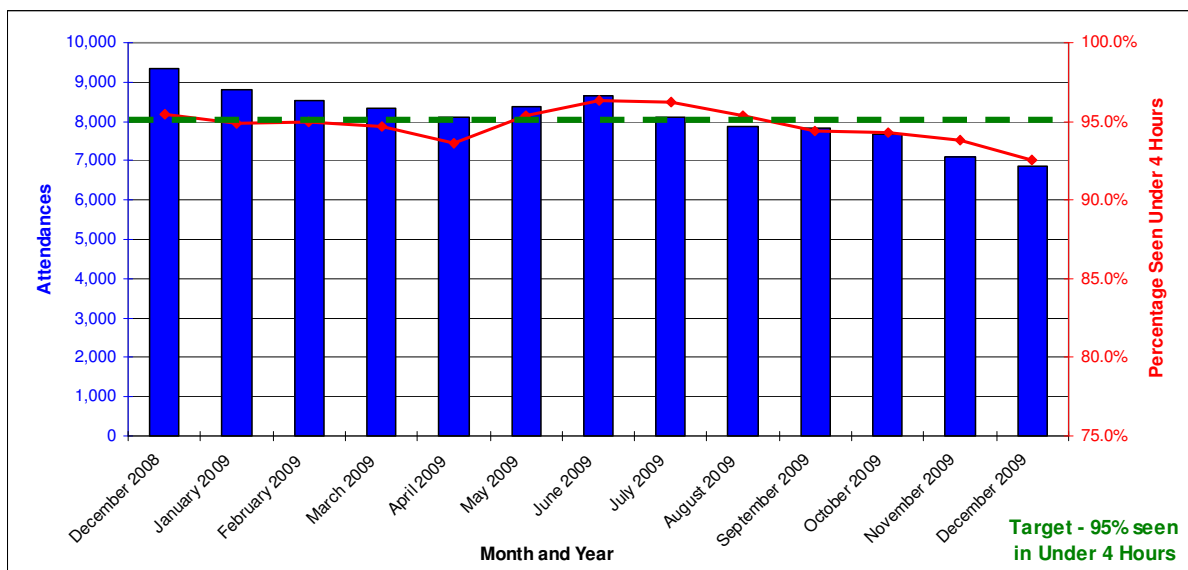
Table 7: Time spent in a **Type 2<sup>2</sup>** A&E Department from arrival until admission, transfer or discharge by Hospital, December 2009.

|                                 | Percentage Spending 4 hours and Under in A&E | Number Spending Over 12 hours in A&E | Total Attendances |
|---------------------------------|--|--------------------------------------|-------------------|
| <b>Whiteabbey</b>               | 98.1%  | 0                                    | 1,402             |
| <b>Mid Ulster</b>               | 97.6%  | 0                                    | 1,186             |
| <b>Lagan Valley Hospital</b>    | 86.5%  | 23                                   | 2,548             |
| <b>Downe Hospital</b>           | 93.2%  | 1                                    | 1,726             |
| <b>All Type 2 A&amp;E Depts</b> | 92.5%  | 24                                   | 6,862             |

Table 8: Time spent in a **Type 2<sup>2</sup>** A&E Department from arrival until admission, transfer or discharge, December 2008 - December 2009.

| Month                 | Percentage Spending 4 hours and Under in A&E | Number Spending Over 12 hours in A&E | Total Attendances |
|-----------------------|--|--------------------------------------|-------------------|
| <b>December 2008</b>  | 95.4%  | 3                                    | 9,344             |
| <b>January 2009</b>   | 94.9%  | 6                                    | 8,810             |
| <b>February 2009</b>  | 95.0%  | 5                                    | 8,509             |
| <b>March 2009</b>     | 94.7%  | 50                                   | 8,320             |
| <b>April 2009</b>     | 93.6%  | 32                                   | 8,085             |
| <b>May 2009</b>       | 95.3%  | 5                                    | 8,357             |
| <b>June 2009</b>      | 96.3%  | 1                                    | 8,630             |
| <b>July 2009</b>      | 96.2%  | 1                                    | 8,101             |
| <b>August 2009</b>    | 95.3%  | 0                                    | 7,855             |
| <b>September 2009</b> | 94.4%  | 3                                    | 7,827             |
| <b>October 2009</b>   | 94.2%  | 5                                    | 7,667             |
| <b>November 2009</b>  | 93.8%  | 7                                    | 7,090             |
| <b>December 2009</b>  | 92.5%  | 24                                   | 6,862             |

Figure 3: Number of Attendances at **Type 2<sup>2</sup>** A&E Departments and Percentage that had Waits of Under 4 Hours, December 2008 - December 2009, Northern Ireland.



<sup>2</sup> See Note 11.

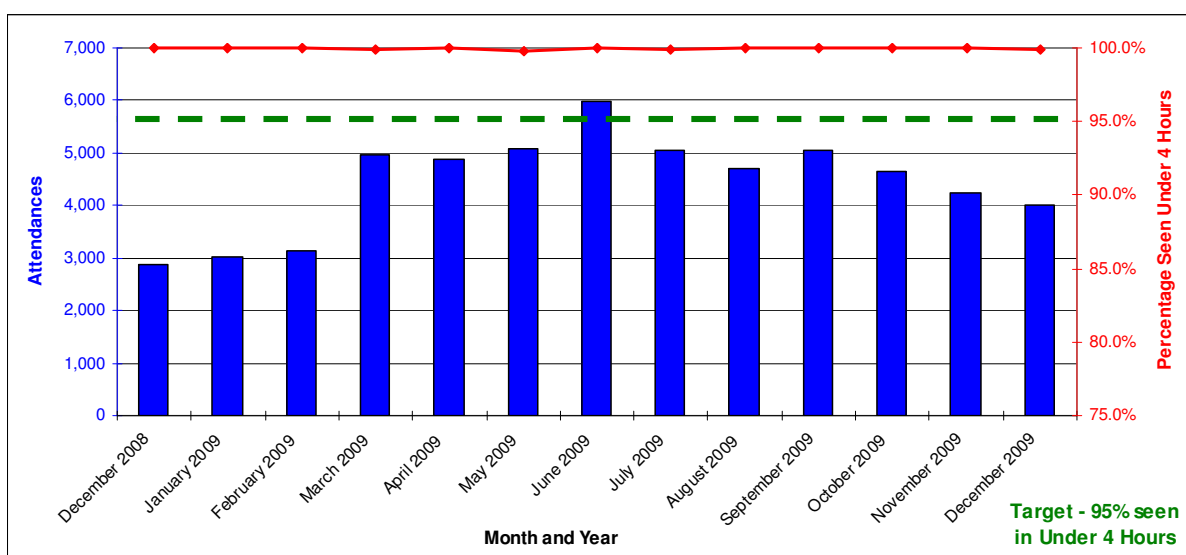
Table 9: Time spent in a **Type 3<sup>2</sup>** A&E Department from arrival until admission, transfer or discharge by Hospital, December 2009.

|                                 | Percentage Spending 4 hours and Under in A&E | Number Spending Over 12 hours in A&E | Total Attendances |
|---------------------------------|--|--------------------------------------|-------------------|
| <b>Tyrone County</b>            | 99.7%  | 0                                    | 986               |
| <b>South Tyrone Hospital</b>    | 100.0%                                       | 0                                    | 1,061             |
| <b>Armagh/Mullinure</b>         | 100.0%                                       | 0                                    | 530               |
| <b>Ards MIU</b>                 | 100.0%                                       | 0                                    | 593               |
| <b>Bangor MIU</b>               | 100.0%                                       | 0                                    | 837               |
| <b>All Type 3 A&amp;E Depts</b> | 99.9%  | 0                                    | 4,007             |

Table 10: Time spent in a **Type 3<sup>2</sup>** A&E Department from arrival until admission, transfer or discharge, December 2008 - December 2009.

| Month                 | Percentage Spending 4 hours and Under in A&E | Number Spending Over 12 hours in A&E | Total Attendances |
|-----------------------|--|--------------------------------------|-------------------|
| <b>December 2008</b>  | 100.0%                                       | 0                                    | 2,862             |
| <b>January 2009</b>   | 100.0%                                       | 0                                    | 3,015             |
| <b>February 2009</b>  | 100.0%                                       | 0                                    | 3,126             |
| <b>March 2009</b>     | 99.9%  | 0                                    | 4,975             |
| <b>April 2009</b>     | 100.0%                                       | 0                                    | 4,885             |
| <b>May 2009</b>       | 99.8%  | 0                                    | 5,095             |
| <b>June 2009</b>      | 100.0%                                       | 0                                    | 5,976             |
| <b>July 2009</b>      | 99.9%  | 0                                    | 5,061             |
| <b>August 2009</b>    | 100.0%                                       | 0                                    | 4,711             |
| <b>September 2009</b> | 100.0%                                       | 0                                    | 5,044             |
| <b>October 2009</b>   | 100.0%                                       | 0                                    | 4,653             |
| <b>November 2009</b>  | 100.0%                                       | 0                                    | 4,253             |
| <b>December 2009</b>  | 99.9%  | 0                                    | 4,007             |

Figure 4: Number of Attendances at **Type 3<sup>2</sup>** A&E Departments and Percentage that had Waits of Under 4 Hours, December 2008 - December 2009, Northern Ireland.



<sup>2</sup> See Note 11.

## Notes

1. Information is collected monthly in the form of an Emergency Care (EC1) return. The EC1 return records every New Attendance and every Unplanned Re-Attendance in each A&E Department across Northern Ireland.
2. The EC1 return was introduced in April 2007 in order to measure a new Priorities for Action (PfA) target which states that: *'From April 2007, no patient should wait longer than 12 hours in A&E and, by March 2008, 95% of patients who attend A&E should be either treated and discharged home, or admitted within four hours of their arrival in the department'*. The most recent version of this target relates to the Priorities for Action (PfA) for 2009-10 states that *'from April 2009, 95% of patients attending any A&E department should be either treated and discharged home, or admitted within four hours of their arrival in the department.'*  
In addition, no patient should wait longer than 12 hours in A&E.
3. Achievement of Targets:  
At least 95% of 'New Attendances' and all 'Unplanned Re-Attendances' waiting no longer than 4 hours from time of arrival to time of departure from 1<sup>st</sup> April 2009 to 31<sup>st</sup> March 2010.
4. The EC1 return was set up as an interim measure until such time as a functional patient level dataset becomes available.
5. The information contained in this publication is not governed by National Statistics.
6. The figures in this release represent the total time spent in a hospital emergency care facility from arrival until admission, transfer or discharge. All 'New Attendances' and all 'Unplanned Re-Attendances' at Emergency Care Departments with a departure time, per calendar month are included. They do not include follow-up attendances.
7. Time is measured from when a patient arrives into the Emergency Care site; the time of arrival is recorded at registration or triage whichever is earlier (clock starts). The 'clock stops' when the patient departs from the Emergency Care Department. The time of departure is defined as when the patient's clinical care episode is completed within the Emergency Care Department.
8. The figures in this release relate to all patients, including paediatric patients.

9. In accordance with the Review of Public Administration, with effect from the 1st April 2007, five new integrated Health and Social Care Trusts (Belfast, Northern, South Eastern, Southern and Western) replaced the previous eighteen provider Trusts in Northern Ireland. Where appropriate figures have been presented based on the new Trust Areas.
10. There are three separate categories of emergency care facility included in this publication:

***Type 1 Emergency Care Department*** - A consultant-led service with designated accommodation for the reception of emergency care patients, providing both emergency medicine and emergency surgical services on a round the clock basis.

***Type 2 Emergency Care Department*** - A consultant-led service with designated accommodation for the reception of emergency care patients, but which does not provide both emergency medicine and emergency surgical services and/or has time-limited opening hours.

***Type 3 Emergency Care Department*** - A minor injury unit with designated accommodation for the reception of patients with a minor injury and/or illness. It may be doctor-led or nurse-led. A defining characteristic of this service is that it treats at least minor injuries and/or illnesses and can be routinely accessed without appointment.

**Categorisation of A&E Departments**

| Trust               | Emergency Care Department |                       |                       |
|---------------------|---------------------------|-----------------------|-----------------------|
|                     | Type 1                    | Type 2                | Type 3                |
| Western Trust       | Altnagelvin               |                       | Tyrone County         |
|                     | Erne Hospital             |                       |                       |
| Northern Trust      | Antrim                    | Whiteabbey            |                       |
|                     | Causeway                  | Mid Ulster            |                       |
| Southern Trust      | Craigavon Hospital        |                       | South Tyrone Hospital |
|                     | Daisyhill Hospital        |                       | Armagh/Mullinure      |
| Belfast Trust       | Belfast City Hospital     |                       |                       |
|                     | Royal Hospital            |                       |                       |
|                     | Mater Hospital            |                       |                       |
|                     | RBHSC                     |                       |                       |
| South Eastern Trust | Ulster Hospital           | Lagan Valley Hospital | Ards MIU              |
|                     |                           | Downe Hospital        | Bangor MIU            |

11. Note that Tyrone County Hospital was previously categorised as a Type 2 Emergency Care Department. As of March 2<sup>nd</sup> 2009, Tyrone County Hospital has been re-categorised as a Type 3 Emergency Care Department as it reconfigured its urgent care treatment service to a nurse led minor injuries service. This should be taken into consideration when drawing historic comparisons between Type 2 and Type 3 Emergency Care Departments.

### **Additional Information**

Further information on waiting Accident and Emergency waiting times in Northern Ireland is available from:

Office Information Manager  
Hospital Information Branch  
Department of Health, Social Services and Public Safety  
Annexe 2  
Castle Buildings  
Stormont  
BT4 3SQ

E-mail: [statistics@dhsspsni.gov.uk](mailto:statistics@dhsspsni.gov.uk)

Internet address: [http://www.dhsspsni.gov.uk/index/stats\\_research/emergency\\_care.htm](http://www.dhsspsni.gov.uk/index/stats_research/emergency_care.htm)