

Statistics Release



Department of
**Health, Social Services
and Public Safety**

www.dhsspsni.gov.uk

AN ROINN

**Sláinte, Seirbhísí Sóisialta
agus Sábháilteachta Poiblí**

MÄNNYSTRIE O

**Poustie, Resydènter Heisin
an Fowk Siccar**

March 2010

Time Spent in Northern Ireland Accident and Emergency Departments: February 2010

This release is the twenty-fourth of a monthly series and presents information on the time spent in Accident and Emergency (A&E) at Health and Social Care Trusts within Northern Ireland. This release reports on Trust performance across A&E Departments for the month of February, 2010.

Background

The Priorities for Action (PfA) target for Northern Ireland for 2009-10 requires that, *'from April 2009, 95% of patients attending any A&E department should be either treated and discharged home, or admitted within four hours of their arrival in the department.'*

In addition, no patient should wait longer than 12 hours in A&E.

Overall results for February

At Northern Ireland level, 82.1% of patients were either treated and discharged or admitted within four hours of their arrival in the department. 541 patients waited longer than 12 hours across all of the Trusts, out of a total of 51,131 attendances in February. This is in comparison to January 2010, where 80.4% of patients were either treated and discharged or admitted within four hours of their arrival and 825 patients waited longer than 12 hours across all the Trusts out of a total of 55,032 attendances.

Results at Trust Level for February 2010**Table 1:** Time spent in an A&E Department from arrival until admission, transfer or discharge by Trust, January 2010 & February 2010.

Health & Social Care Trust	January 2010		February 2010	
	Percentage Spending 4 Hours and Under in A&E	Number Spending Over 12 Hours in A&E	Percentage Spending 4 Hours and Under in A&E	Number Spending Over 12 Hours in A&E
Belfast	71.8%	310	74.3%	253
Northern	79.5%	169	83.0%	135
South Eastern	80.8%	342	80.7%	152
Southern	90.7%	0	90.8%	0
Western	84.1%	4	87.0%	1
Northern Ireland	80.4%	825	82.1%	541

Results by Emergency Care/A&E Department Type¹ for February 2010**Table 2:** Time spent in an A&E Department from arrival until admission, transfer or discharge by Type, January 2010 & February 2010.

A&E Department Type	January 2010		February 2010	
	Percentage Spending 4 Hours and Under in A&E	Number Spending Over 12 Hours in A&E	Percentage Spending 4 Hours and Under in A&E	Number Spending Over 12 Hours in A&E
Type 1	77.1%	748	79.1%	489
Type 2 ²	90.2%	77	89.8%	52
Type 3 ²	100.0%	0	100.0%	0
Northern Ireland	80.4%	825	82.1%	541

¹ See Note 10 for list of Department Types.² See Note 11.

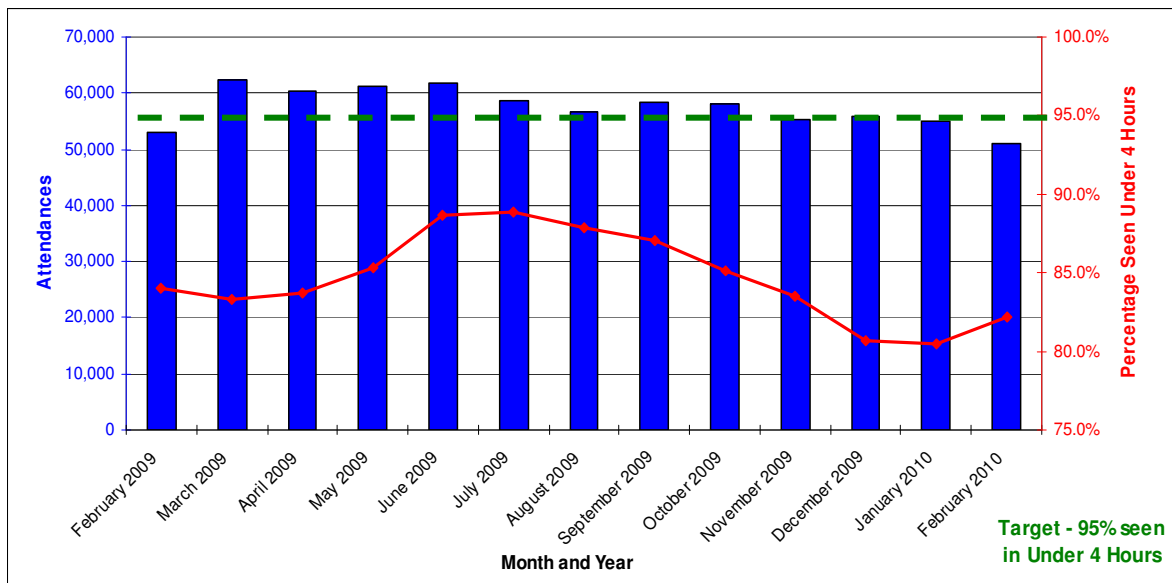
Table 3: Time spent in an A&E Department from arrival until admission, transfer or discharge by Hospital, February 2010.

	Percentage Spending 4 hours and Under in A&E	Number Spending Over 12 hours in A&E	Total Attendances
Belfast City Hospital	67.4%	58	3,210
Mater Hospital	75.1%	97	2,840
Royal Hospital	74.1%	98	5,434
RBHSC	83.5%	0	2,390
Belfast Trust	74.3%	253	13,874
Antrim	71.3%	131	4,869
Whiteabbey	98.3%	0	1,375
Mid Ulster	96.5%	0	1,187
Causeway	89.7%	4	2,942
Northern Trust	83.0%	135	10,373
Ulster Hospital	72.4%	100	5,393
Ards MIU	100.0%	0	649
Bangor MIU	100.0%	0	859
Lagan Valley Hospital	79.8%	46	2,330
Downe Hospital	92.1%	6	1,583
South Eastern Trust	80.7%	152	10,814
Craigavon Hospital	87.3%	0	5,271
Daisyhill Hospital	92.1%	0	2,551
South Tyrone Hospital	100.0%	0	1,090
Armagh/Mullinure	100.0%	0	563
Southern Trust	90.8%	0	9,475
Altnagelvin	81.6%	1	3,940
Erne Hospital	92.3%	0	1,750
Tyrone County	100.0%	0	905
Western Trust	87.0%	1	6,595
Northern Ireland	82.1%	541	51,131

Table 4: Time spent in an A&E Department from arrival until admission, transfer or discharge, February 2009 - February 2010, Northern Ireland.

Month	Percentage Spending 4 hours and Under in A&E	Number Spending Over 12 hours in A&E	Total Attendances
February 2009	84.1%	461	52,889
March 2009	83.3%	623	62,342
April 2009	83.7%	309	60,421
May 2009	85.3%	169	61,114
June 2009	88.7%	30	61,716
July 2009	88.9%	23	58,707
August 2009	87.9%	20	56,711
September 2009	87.1%	48	58,429
October 2009	85.1%	46	58,192
November 2009	83.5%	236	55,290
December 2009	80.7%	399	55,882
January 2010	80.4%	825	55,032
February 2010	82.1%	541	51,131

Figure 1: Number of Attendances at A&E Departments and Percentage that had Waits of Under 4 Hours, February 2009 - February 2010, Northern Ireland.



Waiting Time by Emergency Care/A&E Department TypeTable 5: Time spent in a **Type 1** A&E Department from arrival until admission, transfer or discharge by Hospital, February 2010.

	Percentage Spending 4 hours and Under in A&E	Number Spending Over 12 hours in A&E	Total Attendances
Altnagelvin	81.6%	1	3,940
Erne Hospital	92.3%	0	1,750
Antrim	71.3%	131	4,869
Causeway	89.7%	4	2,942
Craigavon Hospital	87.3%	0	5,271
Daisyhill Hospital	92.1%	0	2,551
Belfast City Hospital	67.4%	58	3,210
Royal Hospital	74.1%	98	5,434
Mater Hospital	75.1%	97	2,840
RBHSC	83.5%	0	2,390
Ulster Hospital	72.4%	100	5,393
All Type 1 A&E Depts	79.1%	489	40,590

Table 6: Time spent in a **Type 1** A&E Department from arrival until admission, transfer or discharge, February 2009 - February 2010.

Month	Percentage Spending 4 hours and Under in A&E	Number Spending Over 12 hours in A&E	Total Attendances
February 2009	80.6%	456	41,254
March 2009	79.7%	573	49,047
April 2009	80.3%	277	47,451
May 2009	82.0%	164	47,662
June 2009	85.9%	29	47,110
July 2009	86.3%	22	45,545
August 2009	85.3%	20	44,145
September 2009	84.4%	45	45,558
October 2009	82.1%	41	45,872
November 2009	80.2%	229	43,947
December 2009	77.2%	375	45,013
January 2010	77.1%	748	43,976
February 2010	79.1%	489	40,590

Figure 2: Number of Attendances at **Type 1** A&E Departments and Percentage that had Waits of Under 4 Hours, February 2009 - February 2010, Northern Ireland.

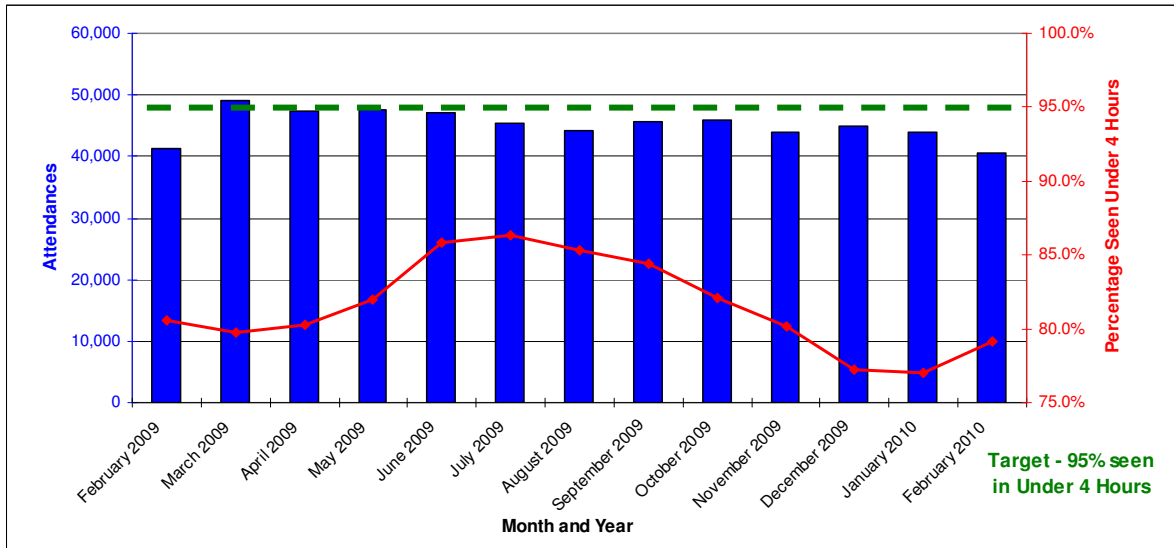


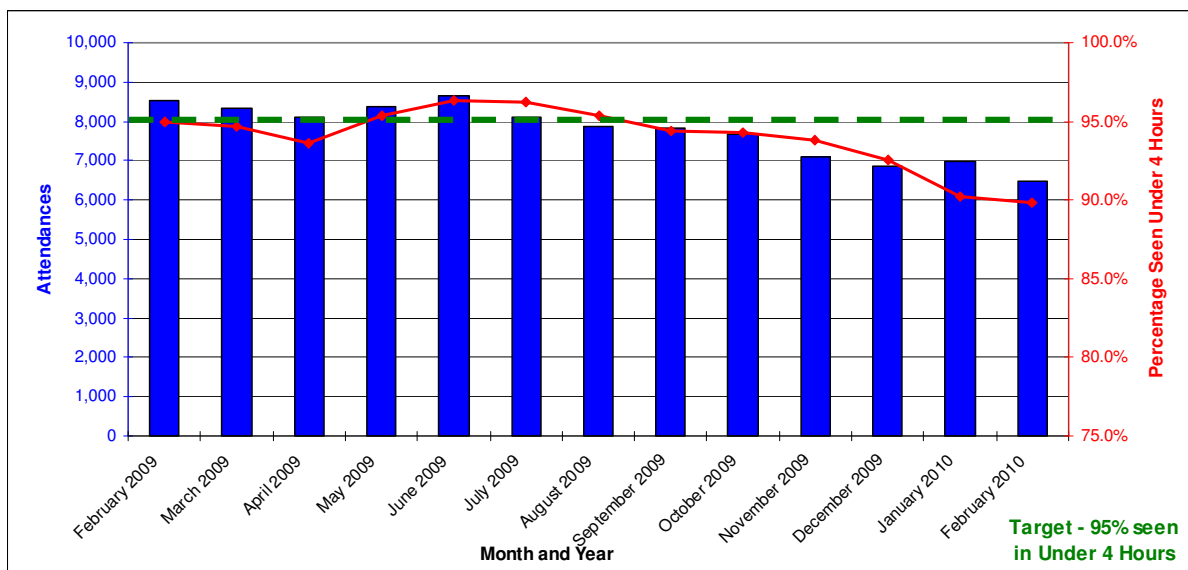
Table 7: Time spent in a **Type 2²** A&E Department from arrival until admission, transfer or discharge by Hospital, February 2010.

	Percentage Spending 4 hours and Under in A&E	Number Spending Over 12 hours in A&E	Total Attendances
Whiteabbey	98.3%	0	1,375
Mid Ulster	96.5%	0	1,187
Lagan Valley Hospital	79.8%	46	2,330
Downe Hospital	92.1%	6	1,583
All Type 2 A&E Depts	89.8%	52	6,475

Table 8: Time spent in a **Type 2²** A&E Department from arrival until admission, transfer or discharge, February 2009 - February 2010.

Month	Percentage Spending 4 hours and Under in A&E	Number Spending Over 12 hours in A&E	Total Attendances
February 2009	95.0%	5	8,509
March 2009	94.7%	50	8,320
April 2009	93.6%	32	8,085
May 2009	95.3%	5	8,357
June 2009	96.3%	1	8,630
July 2009	96.2%	1	8,101
August 2009	95.3%	0	7,855
September 2009	94.4%	3	7,827
October 2009	94.2%	5	7,667
November 2009	93.8%	7	7,090
December 2009	92.5%	24	6,862
January 2010	90.2%	77	6,975
February 2010	89.8%	52	6,475

Figure 3: Number of Attendances at **Type 2²** A&E Departments and Percentage that had Waits of Under 4 Hours, February 2009 - February 2010, Northern Ireland.



² See Note 11.

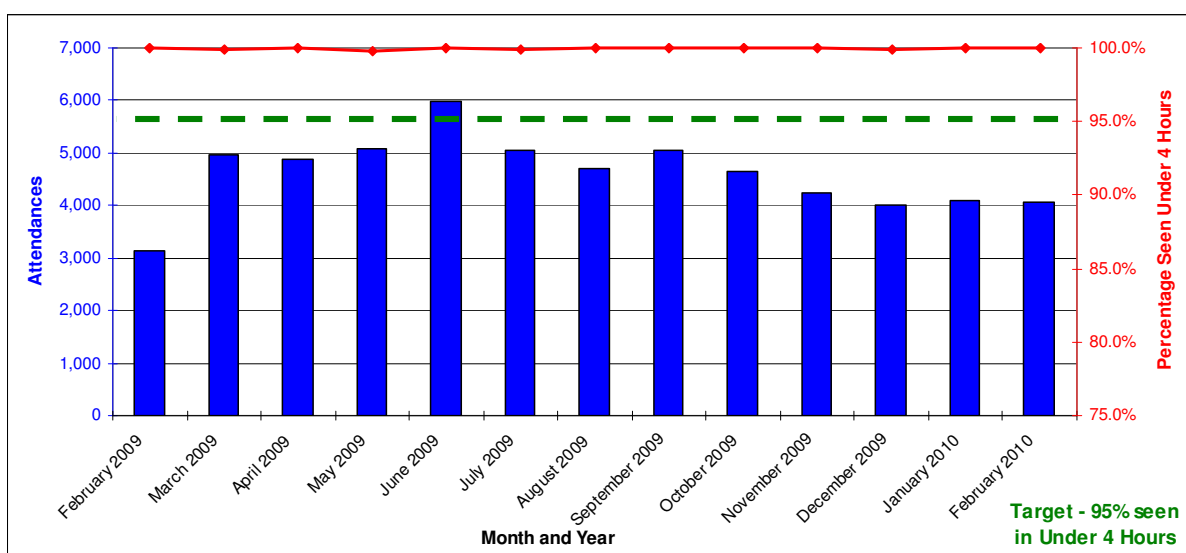
Table 9: Time spent in a **Type 3²** A&E Department from arrival until admission, transfer or discharge by Hospital, February 2010.

	Percentage Spending 4 hours and Under in A&E	Number Spending Over 12 hours in A&E	Total Attendances
Tyrone County	100.0%	0	905
South Tyrone Hospital	100.0%	0	1,090
Armagh/Mullinure	100.0%	0	563
Ards MIU	100.0%	0	649
Bangor MIU	100.0%	0	859
All Type 3 A&E Depts	100.0%	0	4,066

Table 10: Time spent in a **Type 3²** A&E Department from arrival until admission, transfer or discharge, February 2009 - February 2010.

Month	Percentage Spending 4 hours and Under in A&E	Number Spending Over 12 hours in A&E	Total Attendances
February 2009	100.0%	0	3,126
March 2009	99.9%	0	4,975
April 2009	100.0%	0	4,885
May 2009	99.8%	0	5,095
June 2009	100.0%	0	5,976
July 2009	99.9%	0	5,061
August 2009	100.0%	0	4,711
September 2009	100.0%	0	5,044
October 2009	100.0%	0	4,653
November 2009	100.0%	0	4,253
December 2009	99.9%	0	4,007
January 2010	100.0%	0	4,081
February 2010	100.0%	0	4,066

Figure 4: Number of Attendances at **Type 3²** A&E Departments and Percentage that had Waits of Under 4 Hours, February 2009 - February 2010, Northern Ireland.



² See Note 11.

Notes

1. Information is collected monthly in the form of an Emergency Care (EC1) return. The EC1 return records every New Attendance and every Unplanned Re-Attendance in each A&E Department across Northern Ireland.
2. The EC1 return was introduced in April 2007 in order to measure a new Priorities for Action (PfA) target which states that: *'From April 2007, no patient should wait longer than 12 hours in A&E and, by March 2008, 95% of patients who attend A&E should be either treated and discharged home, or admitted within four hours of their arrival in the department'*. The most recent version of this target relates to the Priorities for Action (PfA) for 2009-10 states that *'from April 2009, 95% of patients attending any A&E department should be either treated and discharged home, or admitted within four hours of their arrival in the department.'*
In addition, no patient should wait longer than 12 hours in A&E.
3. Achievement of Targets:
At least 95% of 'New Attendances' and all 'Unplanned Re-Attendances' waiting no longer than 4 hours from time of arrival to time of departure from 1st April 2009 to 31st March 2010.
4. The EC1 return was set up as an interim measure until such time as a functional patient level dataset becomes available.
5. The information contained in this publication is not governed by National Statistics.
6. The figures in this release represent the total time spent in a hospital emergency care facility from arrival until admission, transfer or discharge. All 'New Attendances' and all 'Unplanned Re-Attendances' at Emergency Care Departments with a departure time, per calendar month are included. They do not include follow-up attendances.
7. Time is measured from when a patient arrives into the Emergency Care site; the time of arrival is recorded at registration or triage whichever is earlier (clock starts). The 'clock stops' when the patient departs from the Emergency Care Department. The time of departure is defined as when the patient's clinical care episode is completed within the Emergency Care Department.
8. The figures in this release relate to all patients, including paediatric patients.

9. In accordance with the Review of Public Administration, with effect from the 1st April 2007, five new integrated Health and Social Care Trusts (Belfast, Northern, South Eastern, Southern and Western) replaced the previous eighteen provider Trusts in Northern Ireland. Where appropriate figures have been presented based on the new Trust Areas.
10. There are three separate categories of emergency care facility included in this publication:

Type 1 Emergency Care Department - A consultant-led service with designated accommodation for the reception of emergency care patients, providing both emergency medicine and emergency surgical services on a round the clock basis.

Type 2 Emergency Care Department - A consultant-led service with designated accommodation for the reception of emergency care patients, but which does not provide both emergency medicine and emergency surgical services and/or has time-limited opening hours.

Type 3 Emergency Care Department - A minor injury unit with designated accommodation for the reception of patients with a minor injury and/or illness. It may be doctor-led or nurse-led. A defining characteristic of this service is that it treats at least minor injuries and/or illnesses and can be routinely accessed without appointment.

Categorisation of A&E Departments

Trust	Emergency Care Department		
	Type 1	Type 2	Type 3
Western Trust	Altnagelvin		Tyrone County
	Erne Hospital		
Northern Trust	Antrim	Whiteabbey	
	Causeway	Mid Ulster	
Southern Trust	Craigavon Hospital		South Tyrone Hospital
	Daisyhill Hospital		Armagh/Mullinure
Belfast Trust	Belfast City Hospital		
	Royal Hospital		
	Mater Hospital		
	RBHSC		
South Eastern Trust	Ulster Hospital	Lagan Valley Hospital	Ards MIU
		Downe Hospital	Bangor MIU

11. Note that Tyrone County Hospital was previously categorised as a Type 2 Emergency Care Department. As of March 2nd 2009, Tyrone County Hospital has been re-categorised as a Type 3 Emergency Care Department as it reconfigured its urgent care treatment service to a nurse led minor injuries service. This should be taken into consideration when drawing historic comparisons between Type 2 and Type 3 Emergency Care Departments.

Additional Information

Further information on waiting Accident and Emergency waiting times in Northern Ireland is available from:

Office Information Manager
Hospital Information Branch
Department of Health, Social Services and Public Safety
Annexe 2
Castle Buildings
Stormont
BT4 3SQ

E-mail: statistics@dhsspsni.gov.uk

Internet address: http://www.dhsspsni.gov.uk/index/stats_research/emergency_care.htm