

Statistics Release



Department of
**Health, Social Services
and Public Safety**

www.dhsspsni.gov.uk

AN ROINN

**Sláinte, Seirbhísí Sóisialta
agus Sábháilteachta Poiblí**

MÄNNYSTRIE O

**Poustie, Resydènter Heisin
an Fowk Siccar**

February 2010

Time Spent in Northern Ireland Accident and Emergency Departments: January 2010

This release is the twenty-third of a monthly series and presents information on the time spent in Accident and Emergency (A&E) at Health and Social Care Trusts within Northern Ireland. This release reports on Trust performance across A&E Departments for the month of January, 2010.

Background

The Priorities for Action (PfA) target for Northern Ireland for 2009-10 requires that, *'from April 2009, 95% of patients attending any A&E department should be either treated and discharged home, or admitted within four hours of their arrival in the department.'*

In addition, no patient should wait longer than 12 hours in A&E.

Overall results for January

At Northern Ireland level, 80.4% of patients were either treated and discharged or admitted within four hours of their arrival in the department. 825 patients waited longer than 12 hours across all of the Trusts, out of a total of 55,032 attendances in January. This is in comparison to December 2009, where 80.7% of patients were either treated and discharged or admitted within four hours of their arrival and 399 patients waited longer than 12 hours across all the Trusts out of a total of 55,882 attendances.

Results at Trust Level for January 2010

Table 1: Time spent in an A&E Department from arrival until admission, transfer or discharge by Trust, December 2009 & January 2010.

Health & Social Care Trust	December 2009		January 2010	
	Percentage Spending 4 Hours and Under in A&E	Number Spending Over 12 Hours in A&E	Percentage Spending 4 Hours and Under in A&E	Number Spending Over 12 Hours in A&E
Belfast	73.3%	68	71.8%	310
Northern	79.4%	71	79.5%	169
South Eastern	80.7%	254	80.8%	342
Southern	91.1%	0	90.7%	0
Western	84.1%	6	84.1%	4
Northern Ireland	80.7%	399	80.4%	825

Results by Emergency Care/A&E Department Type¹ for January 2010

Table 2: Time spent in an A&E Department from arrival until admission, transfer or discharge by Type, December 2009 & January 2010.

A&E Department Type	December 2009		January 2010	
	Percentage Spending 4 Hours and Under in A&E	Number Spending Over 12 Hours in A&E	Percentage Spending 4 Hours and Under in A&E	Number Spending Over 12 Hours in A&E
Type 1	77.2%	375	77.1%	748
Type 2 ²	92.5%	24	90.2%	77
Type 3 ²	99.9%	0	100.0%	0
Northern Ireland	80.7%	399	80.4%	825

¹ See Note 10 for list of Department Types.

² See Note 11.

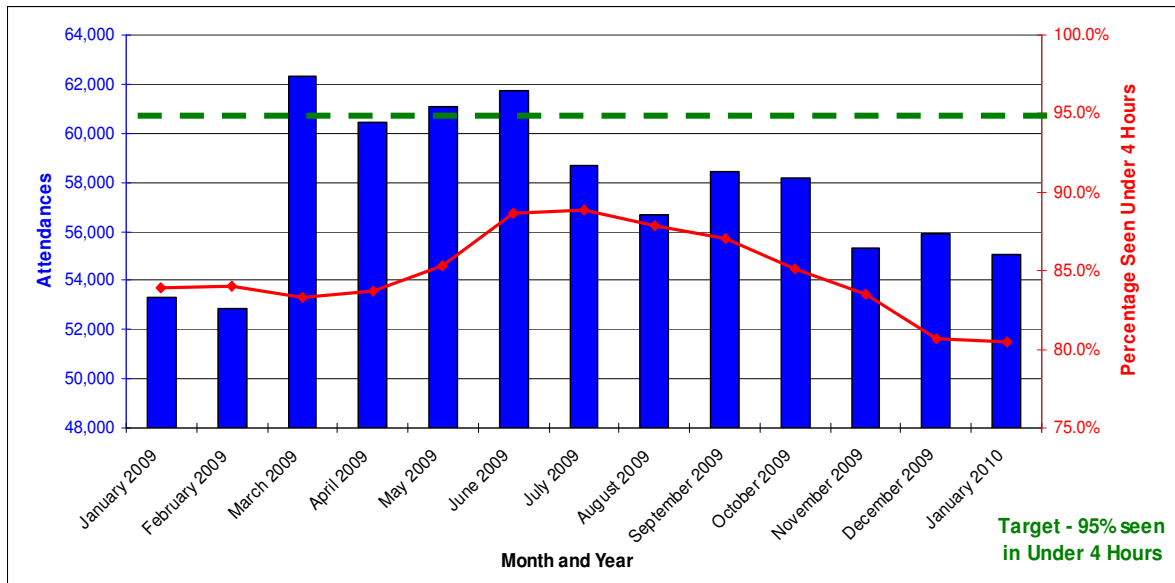
Table 3: Time spent in an A&E Department from arrival until admission, transfer or discharge by Hospital, January 2010.

	Percentage Spending 4 hours and Under in A&E	Number Spending Over 12 hours in A&E	Total Attendances
Belfast City Hospital	61.5%	77	3,456
Mater Hospital	75.8%	87	3,148
Royal Hospital	72.9%	146	5,646
RBHSC	79.2%	0	2,292
Belfast Trust	71.8%	310	14,542
Antrim	67.1%	134	5,428
Whiteabbey	98.0%	0	1,450
Mid Ulster	96.9%	0	1,178
Causeway	85.5%	35	3,299
Northern Trust	79.5%	169	11,355
Ulster Hospital	72.4%	265	5,828
Ards MIU	100.0%	0	597
Bangor MIU	100.0%	0	844
Lagan Valley Hospital	82.4%	59	2,540
Downe Hospital	90.3%	18	1,807
South Eastern Trust	80.8%	342	11,616
Craigavon Hospital	85.6%	0	5,619
Daisyhill Hospital	95.4%	0	2,840
South Tyrone Hospital	100.0%	0	1,124
Armagh/Mullinure	100.0%	0	540
Southern Trust	90.7%	0	10,123
Altnagelvin	76.5%	4	4,304
Erne Hospital	92.2%	0	2,116
Tyrone County	100.0%	0	976
Western Trust	84.1%	4	7,396
Northern Ireland	80.4%	825	55,032

Table 4: Time spent in an A&E Department from arrival until admission, transfer or discharge, January 2009 - January 2010, Northern Ireland.

Month	Percentage Spending 4 hours and Under in A&E	Number Spending Over 12 hours in A&E	Total Attendances
January 2009	83.9%	734	53,313
February 2009	84.1%	461	52,889
March 2009	83.3%	623	62,342
April 2009	83.7%	309	60,421
May 2009	85.3%	169	61,114
June 2009	88.7%	30	61,716
July 2009	88.9%	23	58,707
August 2009	87.9%	20	56,711
September 2009	87.1%	48	58,429
October 2009	85.1%	46	58,192
November 2009	83.5%	236	55,290
December 2009	80.7%	399	55,882
January 2010	80.4%	825	55,032

Figure 1: Number of Attendances at A&E Departments and Percentage that had Waits of Under 4 Hours, January 2009 - January 2010, Northern Ireland.



Waiting Time by Emergency Care/A&E Department TypeTable 5: Time spent in a **Type 1** A&E Department from arrival until admission, transfer or discharge by Hospital, January 2010.

	Percentage Spending 4 hours and Under in A&E	Number Spending Over 12 hours in A&E	Total Attendances
Altnagelvin	76.5%	4	4,304
Erne Hospital	92.2%	0	2,116
Antrim	67.1%	134	5,428
Causeway	85.5%	35	3,299
Craigavon Hospital	85.6%	0	5,619
Daisyhill Hospital	95.4%	0	2,840
Belfast City Hospital	61.5%	77	3,456
Royal Hospital	72.9%	146	5,646
Mater Hospital	75.8%	87	3,148
RBHSC	79.2%	0	2,292
Ulster Hospital	72.4%	265	5,828
All Type 1 A&E Depts	77.1%	748	43,976

Table 6: Time spent in a **Type 1** A&E Department from arrival until admission, transfer or discharge, January 2009 - January 2010.

Month	Percentage Spending 4 hours and Under in A&E	Number Spending Over 12 hours in A&E	Total Attendances
January 2009	80.4%	728	41,488
February 2009	80.6%	456	41,254
March 2009	79.7%	573	49,047
April 2009	80.3%	277	47,451
May 2009	82.0%	164	47,662
June 2009	85.9%	29	47,110
July 2009	86.3%	22	45,545
August 2009	85.3%	20	44,145
September 2009	84.4%	45	45,558
October 2009	82.1%	41	45,872
November 2009	80.2%	229	43,947
December 2009	77.2%	375	45,013
January 2010	77.1%	748	43,976

Figure 2: Number of Attendances at **Type 1** A&E Departments and Percentage that had Waits of Under 4 Hours, January 2009 - January 2010, Northern Ireland.

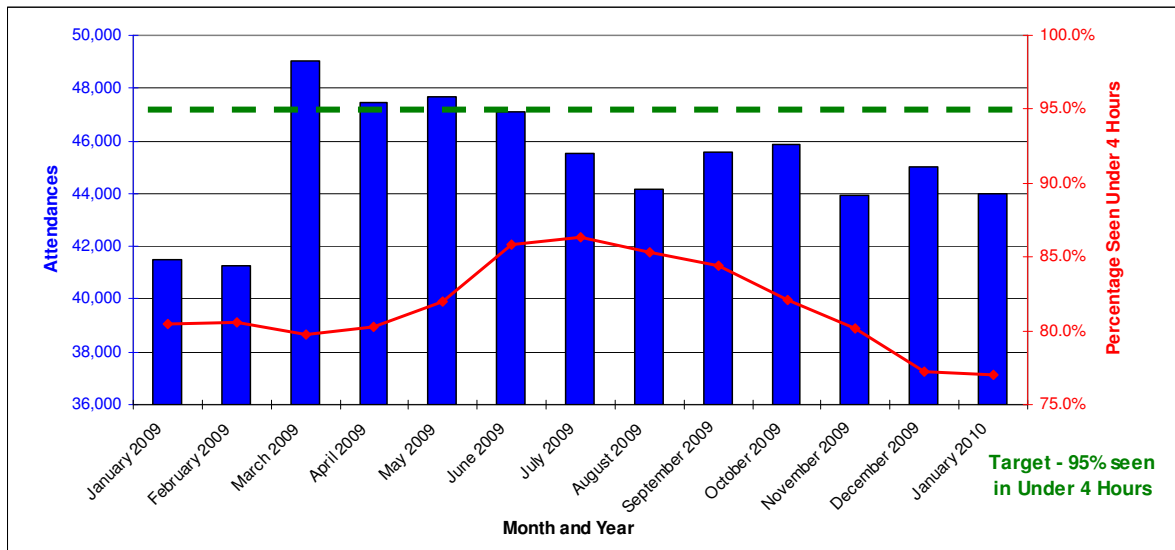


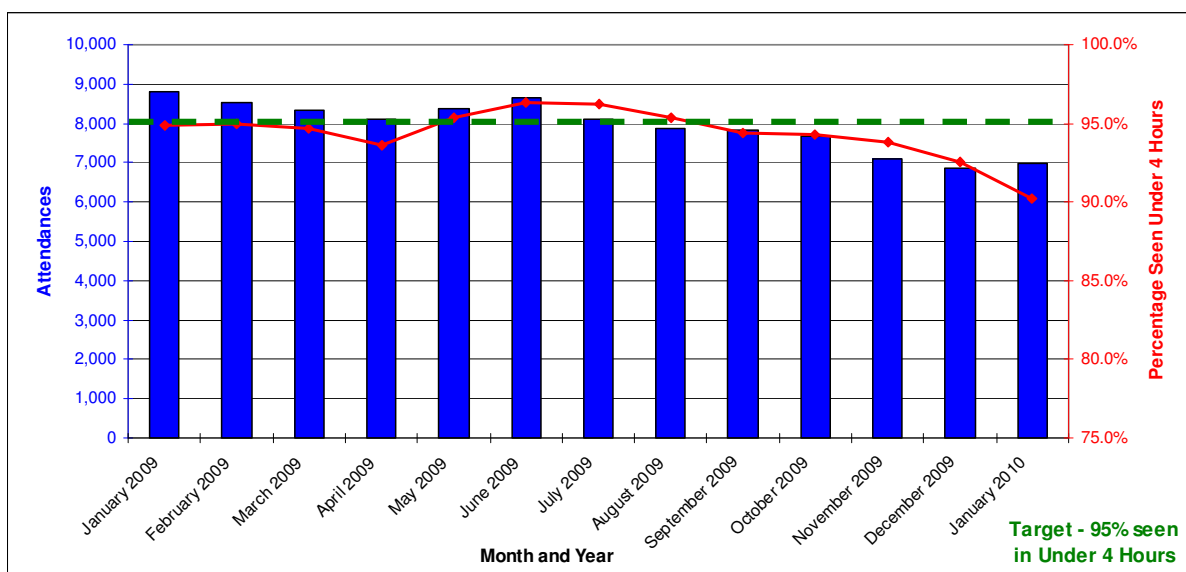
Table 7: Time spent in a **Type 2²** A&E Department from arrival until admission, transfer or discharge by Hospital, January 2010.

	Percentage Spending 4 hours and Under in A&E	Number Spending Over 12 hours in A&E	Total Attendances
Whiteabbey	98.0%	0	1,450
Mid Ulster	96.9%	0	1,178
Lagan Valley Hospital	82.4%	59	2,540
Downe Hospital	90.3%	18	1,807
All Type 2 A&E Depts	90.2%	77	6,975

Table 8: Time spent in a **Type 2²** A&E Department from arrival until admission, transfer or discharge, January 2009 - January 2010.

Month	Percentage Spending 4 hours and Under in A&E	Number Spending Over 12 hours in A&E	Total Attendances
January 2009	94.9%	6	8,810
February 2009	95.0%	5	8,509
March 2009	94.7%	50	8,320
April 2009	93.6%	32	8,085
May 2009	95.3%	5	8,357
June 2009	96.3%	1	8,630
July 2009	96.2%	1	8,101
August 2009	95.3%	0	7,855
September 2009	94.4%	3	7,827
October 2009	94.2%	5	7,667
November 2009	93.8%	7	7,090
December 2009	92.5%	24	6,862
January 2010	90.2%	77	6,975

Figure 3: Number of Attendances at **Type 2²** A&E Departments and Percentage that had Waits of Under 4 Hours, January 2009 - January 2010, Northern Ireland.



² See Note 11.

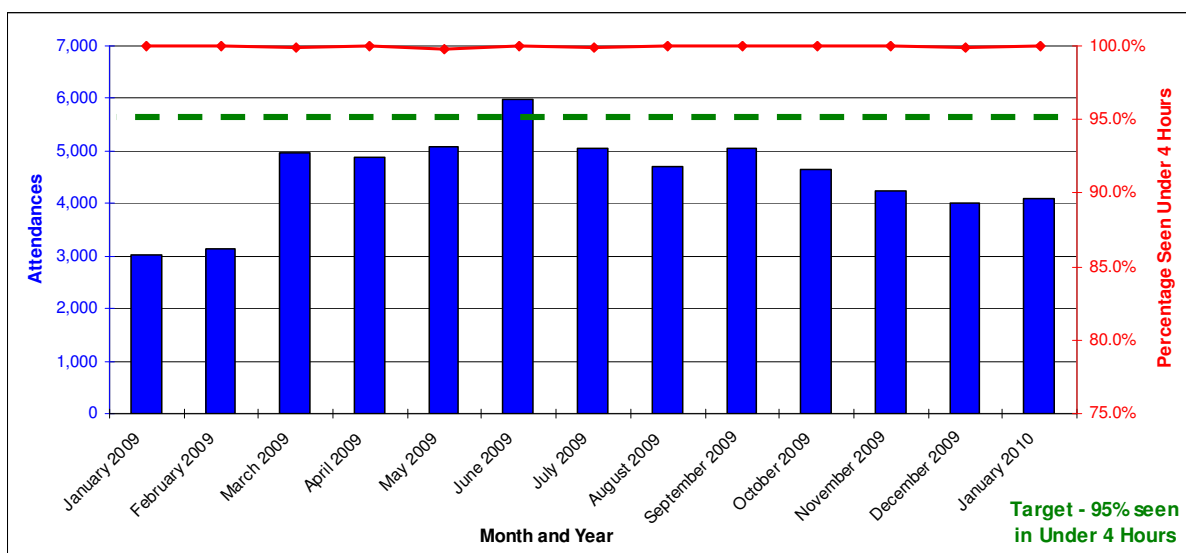
Table 9: Time spent in a **Type 3²** A&E Department from arrival until admission, transfer or discharge by Hospital, January 2009.

	Percentage Spending 4 hours and Under in A&E	Number Spending Over 12 hours in A&E	Total Attendances
Tyrone County	100.0%	0	976
South Tyrone Hospital	100.0%	0	1,124
Armagh/Mullinure	100.0%	0	540
Ards MIU	100.0%	0	597
Bangor MIU	100.0%	0	844
All Type 3 A&E Depts	100.0%	0	4,081

Table 10: Time spent in a **Type 3²** A&E Department from arrival until admission, transfer or discharge, January 2009 - January 2010.

Month	Percentage Spending 4 hours and Under in A&E	Number Spending Over 12 hours in A&E	Total Attendances
January 2009	100.0%	0	3,015
February 2009	100.0%	0	3,126
March 2009	99.9%	0	4,975
April 2009	100.0%	0	4,885
May 2009	99.8%	0	5,095
June 2009	100.0%	0	5,976
July 2009	99.9%	0	5,061
August 2009	100.0%	0	4,711
September 2009	100.0%	0	5,044
October 2009	100.0%	0	4,653
November 2009	100.0%	0	4,253
December 2009	99.9%	0	4,007
January 2010	100.0%	0	4,081

Figure 4: Number of Attendances at **Type 3²** A&E Departments and Percentage that had Waits of Under 4 Hours, January 2009 - January 2010, Northern Ireland.



² See Note 11.

Notes

1. Information is collected monthly in the form of an Emergency Care (EC1) return. The EC1 return records every New Attendance and every Unplanned Re-Attendance in each A&E Department across Northern Ireland.
2. The EC1 return was introduced in April 2007 in order to measure a new Priorities for Action (PfA) target which states that: *'From April 2007, no patient should wait longer than 12 hours in A&E and, by March 2008, 95% of patients who attend A&E should be either treated and discharged home, or admitted within four hours of their arrival in the department'*. The most recent version of this target relates to the Priorities for Action (PfA) for 2009-10 states that *'from April 2009, 95% of patients attending any A&E department should be either treated and discharged home, or admitted within four hours of their arrival in the department.'*
In addition, no patient should wait longer than 12 hours in A&E.
3. Achievement of Targets:
At least 95% of 'New Attendances' and all 'Unplanned Re-Attendances' waiting no longer than 4 hours from time of arrival to time of departure from 1st April 2009 to 31st March 2010.
4. The EC1 return was set up as an interim measure until such time as a functional patient level dataset becomes available.
5. The information contained in this publication is not governed by National Statistics.
6. The figures in this release represent the total time spent in a hospital emergency care facility from arrival until admission, transfer or discharge. All 'New Attendances' and all 'Unplanned Re-Attendances' at Emergency Care Departments with a departure time, per calendar month are included. They do not include follow-up attendances.
7. Time is measured from when a patient arrives into the Emergency Care site; the time of arrival is recorded at registration or triage whichever is earlier (clock starts). The 'clock stops' when the patient departs from the Emergency Care Department. The time of departure is defined as when the patient's clinical care episode is completed within the Emergency Care Department.
8. The figures in this release relate to all patients, including paediatric patients.

9. In accordance with the Review of Public Administration, with effect from the 1st April 2007, five new integrated Health and Social Care Trusts (Belfast, Northern, South Eastern, Southern and Western) replaced the previous eighteen provider Trusts in Northern Ireland. Where appropriate figures have been presented based on the new Trust Areas.
10. There are three separate categories of emergency care facility included in this publication:

Type 1 Emergency Care Department - A consultant-led service with designated accommodation for the reception of emergency care patients, providing both emergency medicine and emergency surgical services on a round the clock basis.

Type 2 Emergency Care Department - A consultant-led service with designated accommodation for the reception of emergency care patients, but which does not provide both emergency medicine and emergency surgical services and/or has time-limited opening hours.

Type 3 Emergency Care Department - A minor injury unit with designated accommodation for the reception of patients with a minor injury and/or illness. It may be doctor-led or nurse-led. A defining characteristic of this service is that it treats at least minor injuries and/or illnesses and can be routinely accessed without appointment.

Categorisation of A&E Departments

Trust	Emergency Care Department		
	Type 1	Type 2	Type 3
Western Trust	Altnagelvin		Tyrone County
	Erne Hospital		
Northern Trust	Antrim	Whiteabbey	
	Causeway	Mid Ulster	
Southern Trust	Craigavon Hospital		South Tyrone Hospital
	Daisyhill Hospital		Armagh/Mullinure
Belfast Trust	Belfast City Hospital		
	Royal Hospital		
	Mater Hospital		
	RBHSC		
South Eastern Trust	Ulster Hospital	Lagan Valley Hospital	Ards MIU
		Downe Hospital	Bangor MIU

11. Note that Tyrone County Hospital was previously categorised as a Type 2 Emergency Care Department. As of March 2nd 2009, Tyrone County Hospital has been re-categorised as a Type 3 Emergency Care Department as it reconfigured its urgent care treatment service to a nurse led minor injuries service. This should be taken into consideration when drawing historic comparisons between Type 2 and Type 3 Emergency Care Departments.

Additional Information

Further information on waiting Accident and Emergency waiting times in Northern Ireland is available from:

Office Information Manager
Hospital Information Branch
Department of Health, Social Services and Public Safety
Annexe 2
Castle Buildings
Stormont
BT4 3SQ

E-mail: statistics@dhsspsni.gov.uk

Internet address: http://www.dhsspsni.gov.uk/index/stats_research/emergency_care.htm