

Statistics Release



Department of
**Health, Social Services
and Public Safety**

www.dhsspsni.gov.uk

AN ROINN

**Sláinte, Seirbhísí Sóisialta
agus Sábháilteachta Poiblí**

MÁNNYSTRIE O

**Poustie, Resydènter Heisin
an Fowk Siccar**

November 2009

Time Spent in Northern Ireland Accident and Emergency Departments: October 2009

This release is the twentieth of a monthly series and presents information on the time spent in Accident and Emergency (A&E) at Health and Social Care Trusts within Northern Ireland. This release reports on Trust performance across A&E Departments for the month of October, 2009.

Background

The Priorities for Action (PfA) target for Northern Ireland for 2009-10 requires that, *'from April 2009, 95% of patients attending any A&E department should be either treated and discharged home, or admitted within four hours of their arrival in the department.'*

In addition, no patient should wait longer than 12 hours in A&E.

Overall results for October

At Northern Ireland level, 85.1% of patients were either treated and discharged or admitted within four hours of their arrival in the department. 46 patients waited longer than 12 hours across all of the Trusts, out of a total of 58,192 attendances in October. This is in comparison to September 2009, where 87.1% of patients were either treated and discharged or admitted within four hours of their arrival and 48 patients waited longer than 12 hours across all the Trusts out of a total of 58,429 attendances.

Results at Trust Level for October 2009

Table 1: Time spent in an A&E Department from arrival until admission, transfer or discharge by Trust, September 2009 & October 2009.

Health & Social Care Trust	September 2009		October 2009	
	Percentage Spending 4 Hours and Under in A&E	Number Spending Over 12 Hours in A&E	Percentage Spending 4 Hours and Under in A&E	Number Spending Over 12 Hours in A&E
Belfast	81.1%	17	83.2%	7
Northern	87.5%	0	84.4%	3
South Eastern	88.7%	23	84.9%	28
Southern	95.3%	0	92.0%	0
Western	83.9%	8	80.9%	8
Northern Ireland	87.1%	48	85.1%	46

Results by Emergency Care/A&E Department Type¹ for October 2009

Table 2: Time spent in an A&E Department from arrival until admission, transfer or discharge by Type, September 2009 & October 2009.

A&E Department Type	September 2009		October 2009	
	Percentage Spending 4 Hours and Under in A&E	Number Spending Over 12 Hours in A&E	Percentage Spending 4 Hours and Under in A&E	Number Spending Over 12 Hours in A&E
Type 1	84.4%	45	82.1%	41
Type 2 ²	94.4%	3	94.2%	5
Type 3 ²	100.0%	0	100.0%	0
Northern Ireland	87.1%	48	85.1%	46

¹ See Note 10 for list of Department Types.

² See Note 11.

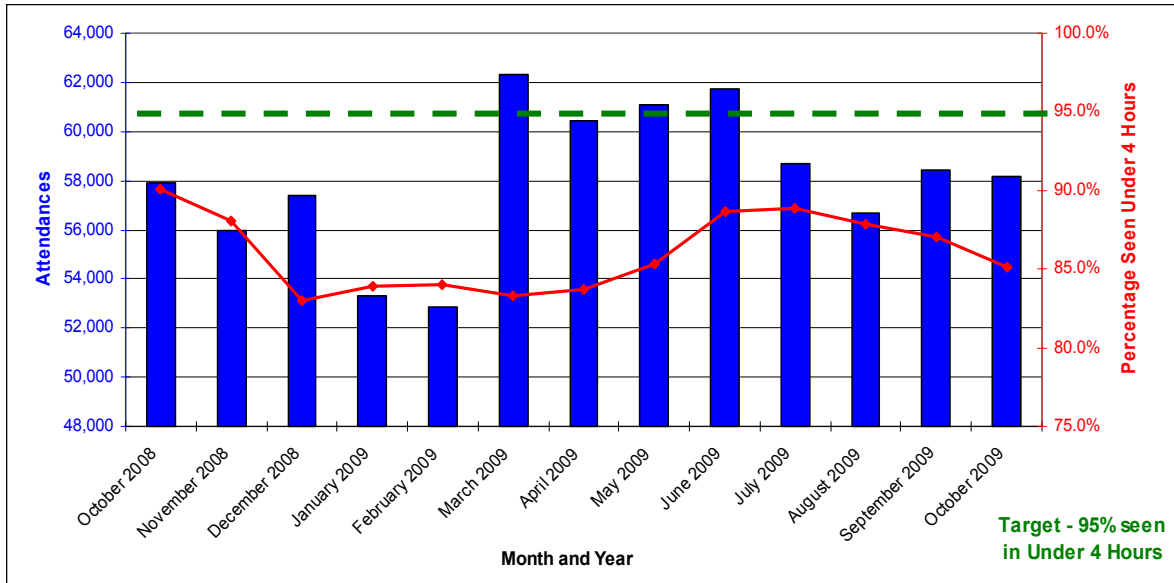
Table 3: Time spent in an A&E Department from arrival until admission, transfer or discharge by Hospital, October 2009.

	Percentage Spending 4 hours and Under in A&E	Number Spending Over 12 hours in A&E	Total Attendances
Belfast City Hospital	74.5%	0	3,666
Mater Hospital	81.3%	3	3,349
Royal Hospital	86.0%	4	5,489
RBHSC	92.4%	0	2,514
Belfast Trust	83.2%	7	15,018
Antrim	72.0%	0	5,695
Whiteabbey	98.7%	0	1,570
Mid Ulster	98.5%	0	1,426
Causeway	92.4%	3	3,452
Northern Trust	84.4%	3	12,143
Ulster Hospital	75.8%	23	6,168
Ards MIU	100.0%	0	714
Bangor MIU	100.0%	0	990
Lagan Valley Hospital	89.5%	5	2,751
Downe Hospital	94.3%	0	1,920
South Eastern Trust	84.9%	28	12,543
Craigavon Hospital	88.2%	0	6,001
Daisyhill Hospital	94.8%	0	2,801
South Tyrone Hospital	100.0%	0	1,239
Armagh/Mullinure	100.0%	0	661
Southern Trust	92.0%	0	10,702
Altnagelvin	71.7%	8	4,562
Erne Hospital	91.0%	0	2,175
Tyrone County	100.0%	0	1,049
Western Trust	80.9%	8	7,786
Northern Ireland	85.1%	46	58,192

Table 4: Time spent in an A&E Department from arrival until admission, transfer or discharge, October 2008 - October 2009, Northern Ireland.

Month	Percentage Spending 4 hours and Under in A&E	Number Spending Over 12 hours in A&E	Total Attendances
October 2008	90.1%	38	57,906
November 2008	88.1%	122	55,978
December 2008	83.0%	253	57,412
January 2009	83.9%	734	53,313
February 2009	84.1%	461	52,889
March 2009	83.3%	623	62,342
April 2009	83.7%	309	60,421
May 2009	85.3%	169	61,114
June 2009	88.7%	30	61,716
July 2009	88.9%	23	58,707
August 2009	87.9%	20	56,711
September 2009	87.1%	48	58,429
October 2009	85.1%	46	58,192

Figure 1: Number of Attendances at A&E Departments and Percentage that had Waits of Under 4 Hours, October 2008 - October 2009, Northern Ireland.



Waiting Time by Emergency Care/A&E Department Type

Table 5: Time spent in a **Type 1** A&E Department from arrival until admission, transfer or discharge by Hospital, October 2009.

	Percentage Spending 4 hours and Under in A&E	Number Spending Over 12 hours in A&E	Total Attendances
Altnagelvin	71.7%	8	4,562
Erne Hospital	91.0%	0	2,175
Antrim	72.0%	0	5,695
Causeway	92.4%	3	3,452
Craigavon Hospital	88.2%	0	6,001
Daisyhill Hospital	94.8%	0	2,801
Belfast City Hospital	74.5%	0	3,666
Royal Hospital	86.0%	4	5,489
Mater Hospital	81.3%	3	3,349
RBHSC	92.4%	0	2,514
Ulster Hospital	75.8%	23	6,168
All Type 1 A&E Depts	82.1%	41	45,872

Table 6: Time spent in a **Type 1** A&E Department from arrival until admission, transfer or discharge, October 2008 - October 2009.

Month	Percentage Spending 4 hours and Under in A&E	Number Spending Over 12 hours in A&E	Total Attendances
October 2008	87.8%	38	44,728
November 2008	85.2%	122	43,454
December 2008	79.3%	250	45,206
January 2009	80.4%	728	41,488
February 2009	80.6%	456	41,254
March 2009	79.7%	573	49,047
April 2009	80.3%	277	47,451
May 2009	82.0%	164	47,662
June 2009	85.9%	29	47,110
July 2009	86.3%	22	45,545
August 2009	85.3%	20	44,145
September 2009	84.4%	45	45,558
October 2009	82.1%	41	45,872

Figure 2: Number of Attendances at **Type 1** A&E Departments and Percentage that had Waits of Under 4 Hours, October 2008 - October 2009, Northern Ireland.

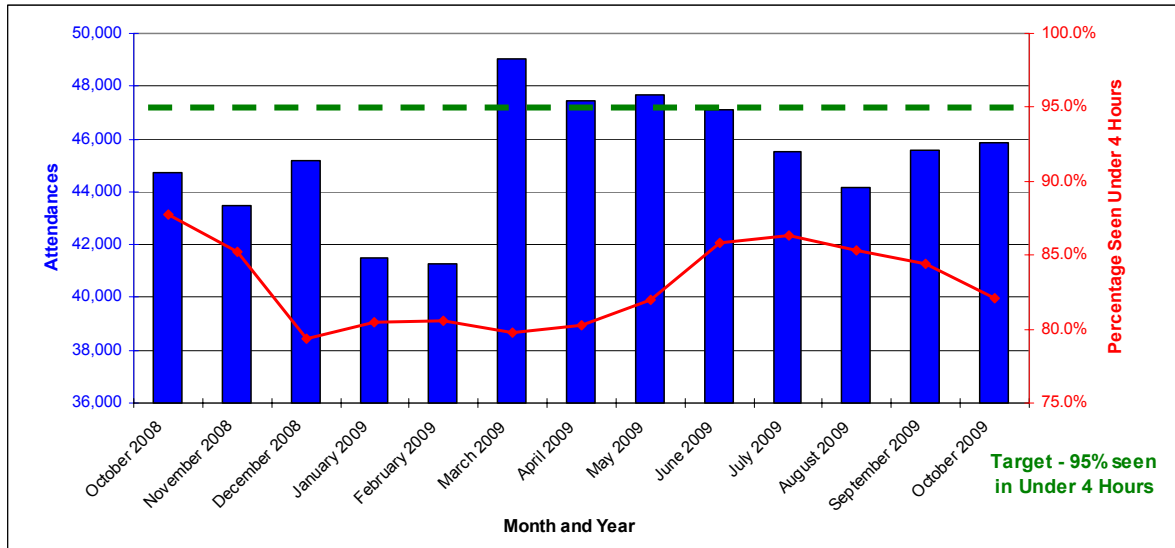


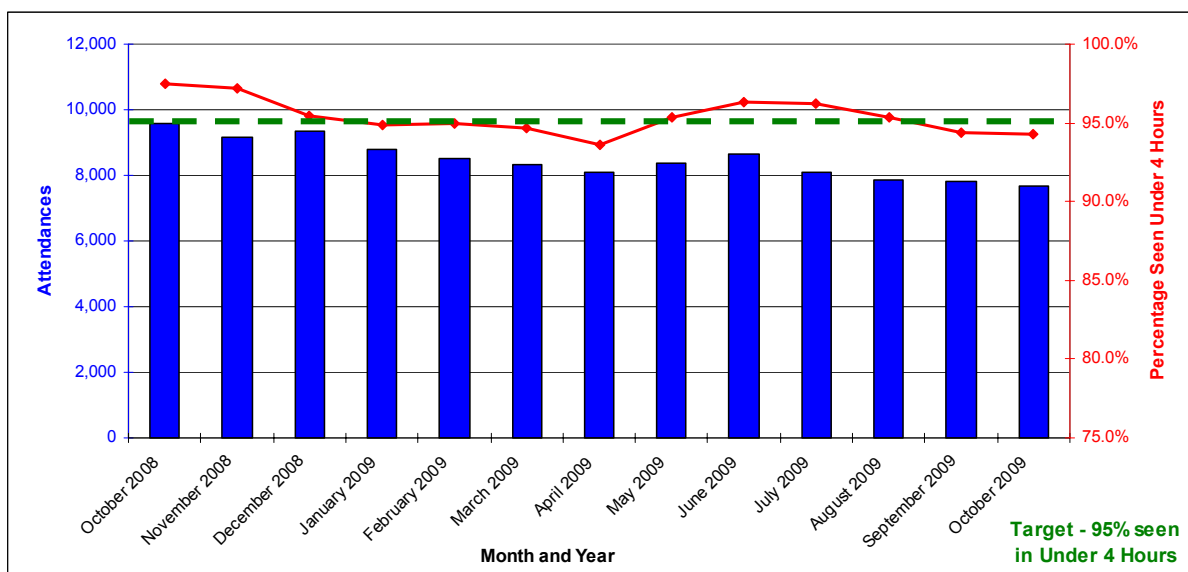
Table 7: Time spent in a **Type 2²** A&E Department from arrival until admission, transfer or discharge by Hospital, October 2009.

	Percentage Spending 4 hours and Under in A&E	Number Spending Over 12 hours in A&E	Total Attendances
Whiteabbey	98.7%	0	1,570
Mid Ulster	98.5%	0	1,426
Lagan Valley Hospital	89.5%	5	2,751
Downe Hospital	94.3%	0	1,920
All Type 2 A&E Depts	94.2%	5	7,667

Table 8: Time spent in a **Type 2²** A&E Department from arrival until admission, transfer or discharge, October 2008 - October 2009.

Month	Percentage Spending 4 hours and Under in A&E	Number Spending Over 12 hours in A&E	Total Attendances
October 2008	97.5%	0	9,559
November 2008	97.2%	0	9,181
December 2008	95.4%	3	9,344
January 2009	94.9%	6	8,810
February 2009	95.0%	5	8,509
March 2009	94.7%	50	8,320
April 2009	93.6%	32	8,085
May 2009	95.3%	5	8,357
June 2009	96.3%	1	8,630
July 2009	96.2%	1	8,101
August 2009	95.3%	0	7,855
September 2009	94.4%	3	7,827
October 2009	94.2%	5	7,667

Figure 3: Number of Attendances at **Type 2²** A&E Departments and Percentage that had Waits of Under 4 Hours, October 2008 - October 2009, Northern Ireland.



² See Note 11.

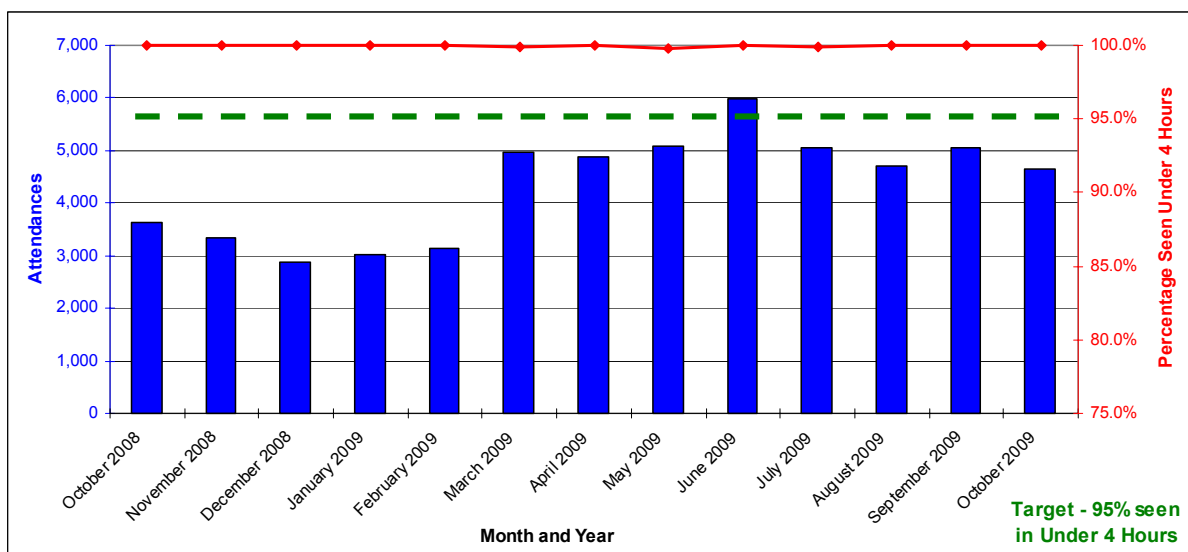
Table 9: Time spent in a **Type 3²** A&E Department from arrival until admission, transfer or discharge by Hospital, October 2009.

	Percentage Spending 4 hours and Under in A&E	Number Spending Over 12 hours in A&E	Total Attendances
Tyrone County	100.0%	0	1,049
South Tyrone Hospital	100.0%	0	1,239
Armagh/Mullinure	100.0%	0	661
Ards MIU	100.0%	0	714
Bangor MIU	100.0%	0	990
All Type 3 A&E Depts	100.0%	0	4,653

Table 10: Time spent in a **Type 3²** A&E Department from arrival until admission, transfer or discharge, October 2008 - October 2009.

Month	Percentage Spending 4 hours and Under in A&E	Number Spending Over 12 hours in A&E	Total Attendances
October 2008	100.0%	0	3,619
November 2008	100.0%	0	3,343
December 2008	100.0%	0	2,862
January 2009	100.0%	0	3,015
February 2009	100.0%	0	3,126
March 2009	99.9%	0	4,975
April 2009	100.0%	0	4,885
May 2009	99.8%	0	5,095
June 2009	100.0%	0	5,976
July 2009	99.9%	0	5,061
August 2009	100.0%	0	4,711
September 2009	100.0%	0	5,044
October 2009	100.0%	0	4,653

Figure 4: Number of Attendances at **Type 3²** A&E Departments and Percentage that had Waits of Under 4 Hours, October 2008 - October 2009, Northern Ireland.



² See Note 11.

Notes

1. Information is collected monthly in the form of an Emergency Care (EC1) return. The EC1 return records every New Attendance and every Unplanned Re-Attendance in each A&E Department across Northern Ireland.
2. The EC1 return was introduced in April 2007 in order to measure a new Priorities for Action (PfA) target which states that: *'From April 2007, no patient should wait longer than 12 hours in A&E and, by March 2008, 95% of patients who attend A&E should be either treated and discharged home, or admitted within four hours of their arrival in the department'*. The most recent version of this target relates to the Priorities for Action (PfA) for 2009-10 states that *'from April 2009, 95% of patients attending any A&E department should be either treated and discharged home, or admitted within four hours of their arrival in the department.'*
In addition, no patient should wait longer than 12 hours in A&E.
3. Achievement of Targets:
At least 95% of 'New Attendances' and all 'Unplanned Re-Attendances' waiting no longer than 4 hours from time of arrival to time of departure from 1st April 2009 to 31st March 2010.
4. The EC1 return was set up as an interim measure until such time as a functional patient level dataset becomes available.
5. The information contained in this publication is not governed by National Statistics.
6. The figures in this release represent the total time spent in a hospital emergency care facility from arrival until admission, transfer or discharge. All 'New Attendances' and all 'Unplanned Re-Attendances' at Emergency Care Departments with a departure time, per calendar month are included. They do not include follow-up attendances.
7. Time is measured from when a patient arrives into the Emergency Care site; the time of arrival is recorded at registration or triage whichever is earlier (clock starts). The 'clock stops' when the patient departs from the Emergency Care Department. The time of departure is defined as when the patient's clinical care episode is completed within the Emergency Care Department.
8. The figures in this release relate to all patients, including paediatric patients.

9. In accordance with the Review of Public Administration, with effect from the 1st April 2007, five new integrated Health and Social Care Trusts (Belfast, Northern, South Eastern, Southern and Western) replaced the previous eighteen provider Trusts in Northern Ireland. Where appropriate figures have been presented based on the new Trust Areas.

10. There are three separate categories of emergency care facility included in this publication:

Type 1 Emergency Care Department - A consultant-led service with designated accommodation for the reception of emergency care patients, providing both emergency medicine and emergency surgical services on a round the clock basis.

Type 2 Emergency Care Department - A consultant-led service with designated accommodation for the reception of emergency care patients, but which does not provide both emergency medicine and emergency surgical services and/or has time-limited opening hours.

Type 3 Emergency Care Department - A minor injury unit with designated accommodation for the reception of patients with a minor injury and/or illness. It may be doctor-led or nurse-led. A defining characteristic of this service is that it treats at least minor injuries and/or illnesses and can be routinely accessed without appointment.

Categorisation of A&E Departments

Trust	Emergency Care Department		
	Type 1	Type 2	Type 3
Western Trust	Altnagelvin		Tyrone County
	Erne Hospital		
Northern Trust	Antrim	Whiteabbey	
	Causeway	Mid Ulster	
Southern Trust	Craigavon Hospital		South Tyrone Hospital
	Daisyhill Hospital		Armagh/Mullinure
Belfast Trust	Belfast City Hospital		
	Royal Hospital		
	Mater Hospital		
	RBHSC		
South Eastern Trust	Ulster Hospital	Lagan Valley Hospital	Ards MIU
		Downe Hospital	Bangor MIU

Accident and Emergency Waiting Times: October 2009

11. Note that Tyrone County Hospital was previously categorised as a Type 2 Emergency Care Department. As of March 2nd 2009, Tyrone County Hospital has been re-categorised as a Type 3 Emergency Care Department as it reconfigured its urgent care treatment service to a nurse led minor injuries service. This should be taken into consideration when drawing historic comparisons between Type 2 and Type 3 Emergency Care Departments.

Additional Information

Further information on waiting Accident and Emergency waiting times in Northern Ireland is available from:

Office Information Manager
Hospital Information Branch
Department of Health, Social Services and Public Safety
Annexe 2
Castle Buildings
Stormont
BT4 3SQ

E-mail: statistics@dhsspsni.gov.uk

Internet address: http://www.dhsspsni.gov.uk/index/stats_research/emergency_care.htm