

Statistics Release



Department of
**Health, Social Services
and Public Safety**

An Roinn
**Sláinte, Seirbhísí Sóisialta
agus Sábháilteachta Poiblí**

www.dhsspsni.gov.uk

07 September 2006

Northern Ireland Waiting Lists – June 2006

This statistics release gives details of the number of people waiting for inpatient or outpatient treatment at hospitals in Northern Ireland at the end of June 2006, the most recent quarter for which figures are available.

Inpatients

Headline Totals – Table 1

The total number of patients waiting to be admitted to hospitals in Northern Ireland at the end of June 2006 stood at 40,285.

Over the quarter, comparing the end of June 2006 with the end of March 2006 (41,508), the total number waiting has decreased by 1,223 (-2.9%).

Over the year, comparing the end of June 2006 with the end of June 2005 (47,421), the total number waiting decreased by 7,136 (-15.0%).

Table 1: Quarterly Inpatient Waiting Lists – June 2006

Waiting for:	Quarter Ending June 2006	Change compared with end of previous quarter	Change compared with end same quarter – previous year
Ordinary Admissions	15,029	-383	-3,825
Day case Admissions	25,256	-840	-3,311
Total Waiting	40,285	-1,223	-7,136

Source: CHI

Detailed notes and definitions are provided in the Technical Notes.



A National Statistics Publication

National Statistics are produced to high professional standards set out in the National Statistics Code of Practice. They undergo regular quality assurance reviews to ensure that they meet customer needs. They are produced free from any political interference.

Numbers Waiting for Ordinary Admission and Day Case Treatment

People on the inpatient waiting list in Northern Ireland can be waiting for admission to hospital as day cases or as ordinary admissions.

Of the 40,285 people waiting for admission to hospital at the end of June 2006, 15,029 (37.3%) were waiting for ordinary admission and 25,256 (62.7%) were waiting for day case admission (Table 1).

Since the end of March 2006, the number of cases waiting for ordinary admission has decreased by 383 (-2.5%) and the number waiting for day case admission has decreased by 840 (-3.2%).

In comparison with June 2005, the number of cases waiting for ordinary admission has decreased by 3,825 (-20.3%) and the number waiting for day case admission has decreased by 3,311 (-11.6%).

Waiting Times for Ordinary Admission and Day Case Treatment¹ – Table 2

At the end of June 2006, the number of patients waiting 6 months and over was 5,144 or 12.8% of the total waiting.

Over the quarter, comparing the end of June 2006 with the end of March 2006, the number of people waiting 6 months and over decreased by 1,436 (-21.8%).

Over the year, comparing the end of June 2006 with the end of June 2005, the number of people waiting 6 months and over decreased by 7,529 (-59.4%).

Table 2 Patients Waiting 6 Months and Over¹ – June 2006

Waiting for:	Quarter Ending June 06	Change compared with end of previous quarter	Change compared with end same quarter - previous year
Ordinary admissions	2,685	-665	-4,253
Day case admissions	2,459	-771	-3,276
Total Waiting	5,144	-1,436	-7,529

Source: CH1

¹ Refer to Technical Notes – point 3.

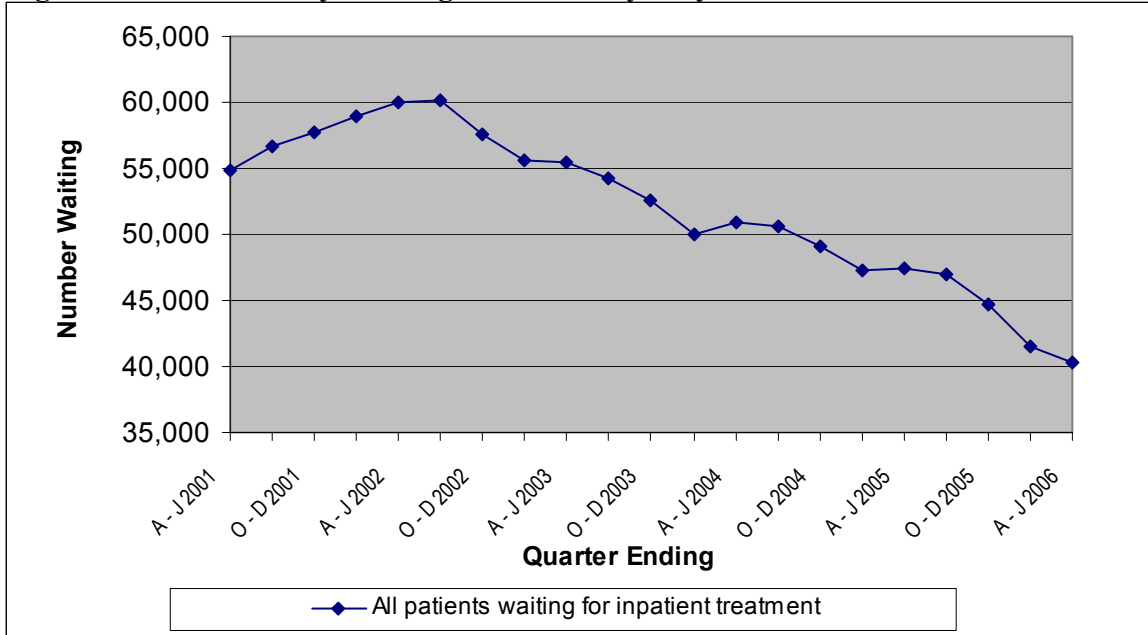
Peak Figures

The end of June 2006 total of 40,285 on the inpatient waiting list represents a decrease of 19,905 (-33.1%) on the peak waiting list figure of 60,190 (end September 2002).

Trends

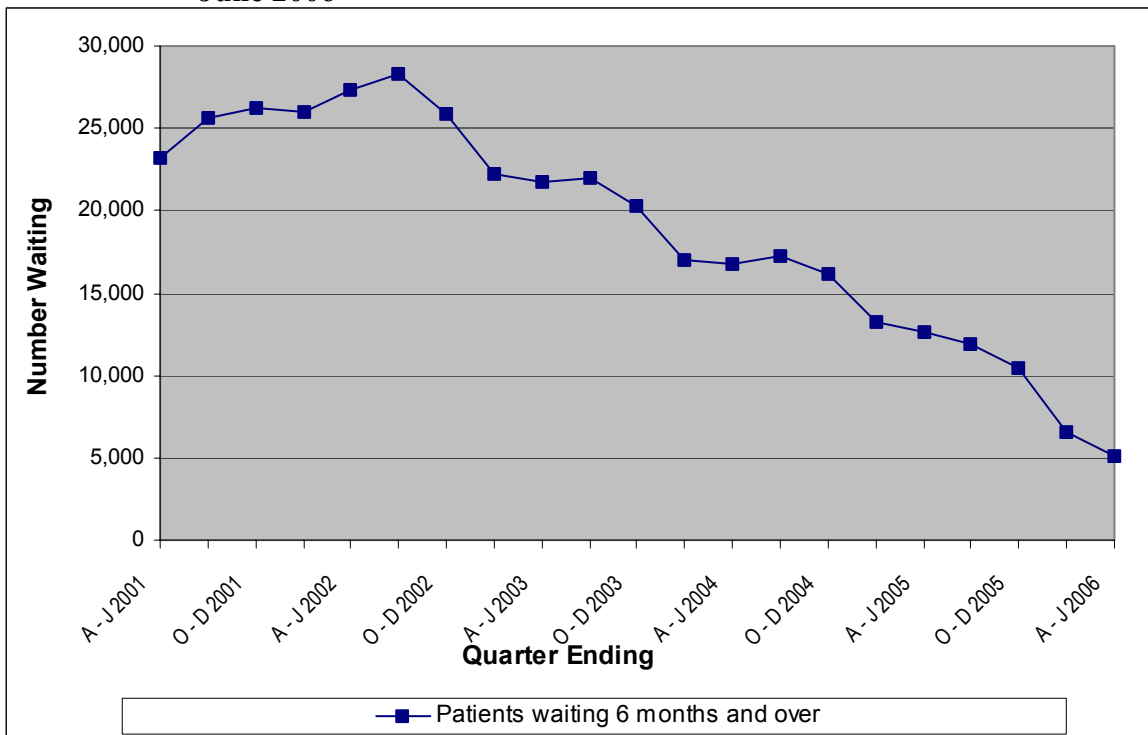
The total number of people waiting for inpatient treatment was on a generally upward trend from June 2001, and rose to peak in September 2002. There has been an overall downward trend since this peak. The total number of people waiting increased slightly during the quarter ending June 2005, but has decreased in the last four quarters (Figure 1). Patients waiting 6 months and over have been generally on a downward trend since September 2002 (Figure 2).

Figure 1 Quarterly Waiting Lists – Five yearly trends June 2001 – June 2006



Source: CH1

Figure 2 Quarterly Waiting Times¹ - Five yearly trends June 2001 – June 2006



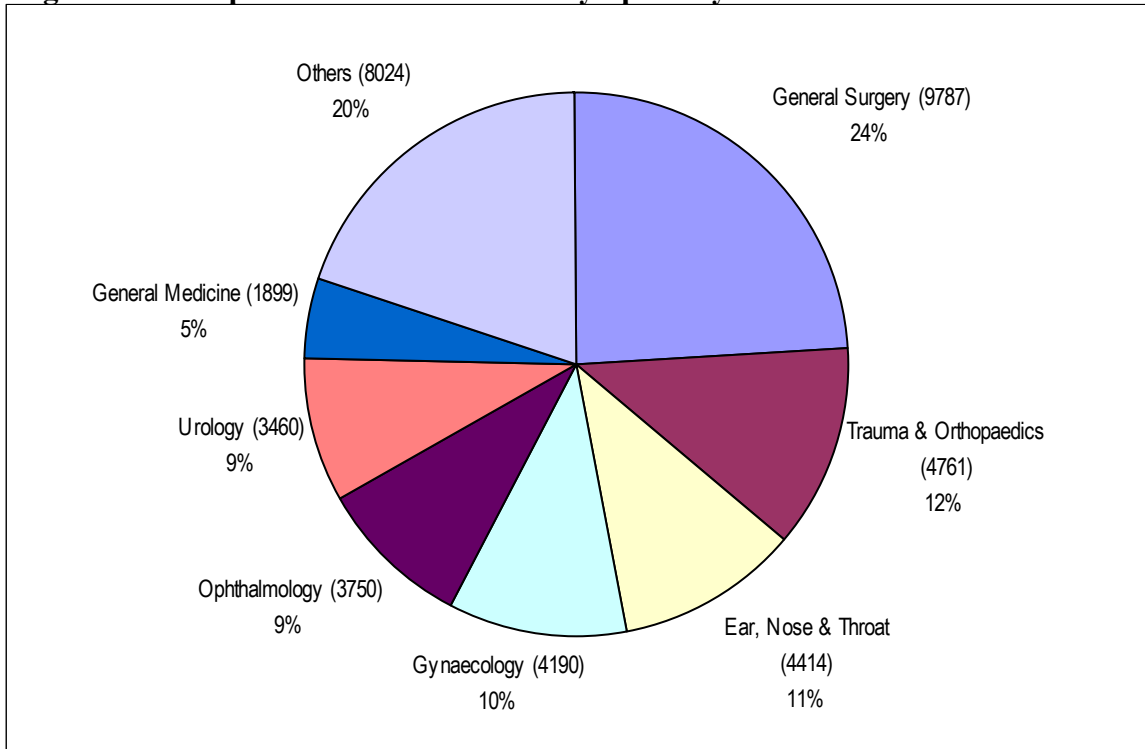
Source: CH1

¹ Refer to Technical Notes – point 3.

Inpatients Waiting by Specialty

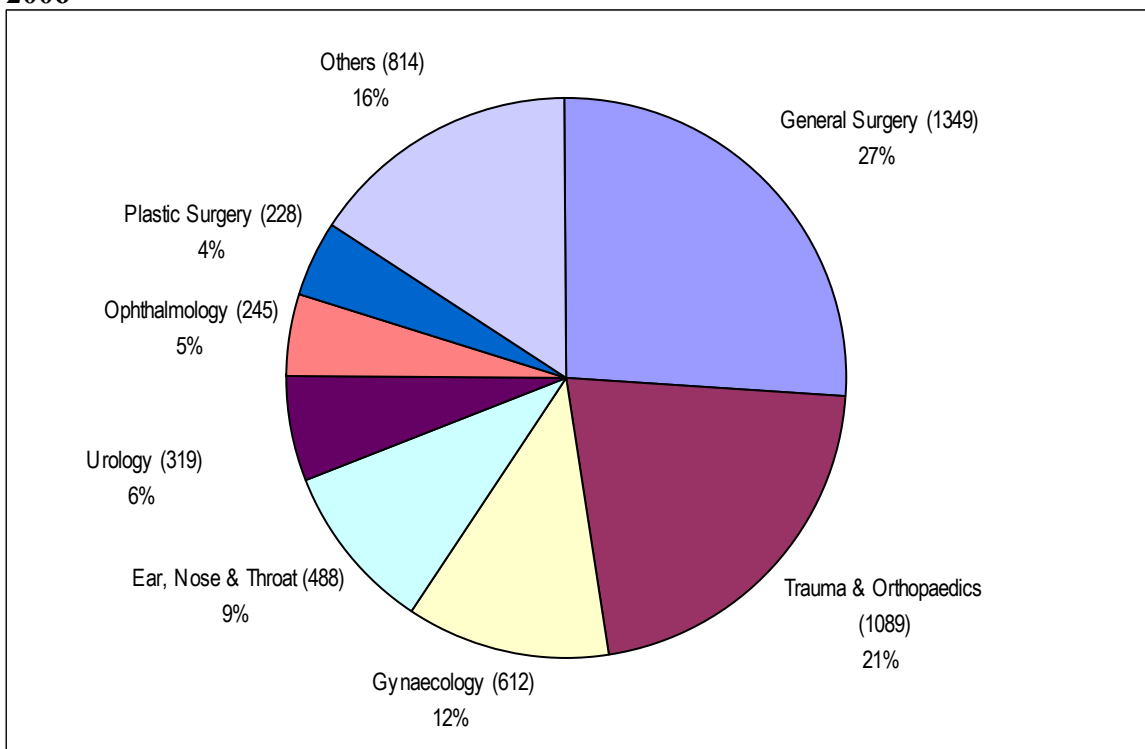
The overwhelming majority of those waiting (80.1%) were within seven specialties: General Surgery; Trauma and Orthopaedic Surgery (T&O); Ear, Nose and Throat (ENT); Gynaecology (Gynae); Ophthalmology, Urology and General Medicine (Figure 3a). Figures for patients waiting 6 months and over are shown in Figure 3b.

Figure 3a Inpatients - Total Waiters by Specialty at the end of June 2006



Source: CHI

Figure 3b Inpatients – Patients waiting 6 months and over¹ by Specialty at the end of June 2006



Source: CHI

¹ Refer to Technical Notes – point 3.

Inpatient Waiting Time by Specialty

Waiting times for inpatients by specialty are shown in Tables 3a and 3b. Overall 87.2% of those waiting for admission were waiting less than 6 months. More than 99% of patients were waiting for treatment in the Acute Services Programme of Care.

Table 3a Number of Patients Waiting for Admission by Months Waiting and Specialty – June 2006

Specialty	Patients Waiting for Admission by Months Waiting									Total Number of Patients Awaiting Admission
	0 - 2	3 - 5	6 - 8	9 - 11	12 - 14	15 - 17	18 - 20	21 - 23	24 +	
General Surgery	6,308	2,130	1,087	262	0	0	0	0	0	9,787
Trauma & Orthopaedics	2,157	1,515	883	206	0	0	0	0	0	4,761
Ear, Nose & Throat	2,425	1,501	425	63	0	0	0	0	0	4,414
Gynaecology	2,504	1,074	470	142	0	0	0	0	0	4,190
Ophthalmology	2,629	876	151	82	0	1	1	2	8	3,750
Urology	2,211	930	268	51	0	0	0	0	0	3,460
General Medicine	1,404	382	94	19	0	0	0	0	0	1,899
Gastroenterology	1,242	466	116	66	0	0	0	0	0	1,890
Cardiology	882	241	114	19	0	0	0	0	0	1,256
Plastic Surgery	579	257	154	74	0	0	0	0	0	1,064
Pain Management	410	219	82	10	0	0	0	0	0	721
Rheumatology	492	122	28	0	0	0	0	0	0	642
Paediatric Surgery	276	172	84	26	0	0	0	0	0	558
Oral Surgery	229	129	36	12	0	0	0	0	0	406
Dermatology	209	125	21	17	0	0	0	0	0	372
Cardiac Surgery	215	67	0	0	0	0	0	0	0	282
Neurology	81	47	28	4	0	0	0	0	0	160
Neurosurgery	51	21	15	8	0	0	0	0	0	95
Thoracic Surgery	75	14	1	1	0	0	0	0	0	91
Haematology (Clinical)	64	6	0	0	0	0	0	0	0	70
Other	371	33	7	6	0	0	0	0	0	417
All Specialties	24,814	10,327	4,064	1,068	0	1	1	2	8	40,285

Table 3b Percentage of Patients Waiting for Admission by Months Waiting and Specialty – June 2006²

Specialty	Patients Waiting for Admission by Months Waiting								
	0 - 2	3 - 5	6 - 8	9 - 11	12 - 14	15 - 17	18 - 20	21 - 23	24 +
General Surgery	64.5%	21.8%	11.1%	2.7%	0.0%	0.0%	0.0%	0.0%	0.0%
Trauma & Orthopaedics	45.3%	31.8%	18.5%	4.3%	0.0%	0.0%	0.0%	0.0%	0.0%
Ear, Nose & Throat	54.9%	34.0%	9.6%	1.4%	0.0%	0.0%	0.0%	0.0%	0.0%
Gynaecology	59.8%	25.6%	11.2%	3.4%	0.0%	0.0%	0.0%	0.0%	0.0%
Ophthalmology	70.1%	23.4%	4.0%	2.2%	0.0%	< 0.1%	< 0.1%	0.1%	0.2%
Urology	63.9%	26.9%	7.7%	1.5%	0.0%	0.0%	0.0%	0.0%	0.0%
General Medicine	73.9%	20.1%	4.9%	1.0%	0.0%	0.0%	0.0%	0.0%	0.0%
Gastroenterology	65.7%	24.7%	6.1%	3.5%	0.0%	0.0%	0.0%	0.0%	0.0%
Cardiology	70.2%	19.2%	9.1%	1.5%	0.0%	0.0%	0.0%	0.0%	0.0%
Plastic Surgery	54.4%	24.2%	14.5%	7.0%	0.0%	0.0%	0.0%	0.0%	0.0%
Pain Management	56.9%	30.4%	11.4%	1.4%	0.0%	0.0%	0.0%	0.0%	0.0%
Rheumatology	76.6%	19.0%	4.4%	0.0%	0.0%	0.0%	0.0%	0.0%	0.0%
Paediatric Surgery	49.5%	30.8%	15.1%	4.7%	0.0%	0.0%	0.0%	0.0%	0.0%
Oral Surgery	56.4%	31.8%	8.9%	3.0%	0.0%	0.0%	0.0%	0.0%	0.0%
Dermatology	56.2%	33.6%	5.6%	4.6%	0.0%	0.0%	0.0%	0.0%	0.0%
Cardiac Surgery	76.2%	23.8%	0.0%	0.0%	0.0%	0.0%	0.0%	0.0%	0.0%
Neurology	50.6%	29.4%	17.5%	2.5%	0.0%	0.0%	0.0%	0.0%	0.0%
Neurosurgery	53.7%	22.1%	15.8%	8.4%	0.0%	0.0%	0.0%	0.0%	0.0%
Thoracic Surgery	82.4%	15.4%	1.1%	1.1%	0.0%	0.0%	0.0%	0.0%	0.0%
Haematology (Clinical)	91.4%	8.6%	0.0%	0.0%	0.0%	0.0%	0.0%	0.0%	0.0%
Other	89.0%	7.9%	1.7%	1.4%	0.0%	0.0%	0.0%	0.0%	0.0%
All Specialties	61.6%	25.6%	10.1%	2.7%	0.0%	< 0.1%	< 0.1%	< 0.1%	<0.1%

Source: CH1

²Refer to Technical Notes – point 9

Inpatient Waiting Times by Provider Trust

Waiting times for inpatients by Trust are shown in Table 4.

Table 4 Number of Patients Waiting for Admission by Provider Trust and by Months Waiting – June 2006

Provider Trust	Patients Waiting for Admission by Months Waiting									Total Number of Patients Awaiting Admission
	0 - 2	3 - 5	6 - 8	9 - 11	12 - 14	15 - 17	18 - 20	21 - 23	24 +	
Altnagelvin Group	2,469	1,167	491	174	0	0	0	0	0	4,301
Belfast City Hospital	2,953	1,456	430	85	0	0	0	0	0	4,924
Causeway	1,036	191	56	0	0	0	0	0	0	1,283
Craigavon Area Hospital Group	3,322	1,536	694	100	0	0	0	0	0	5,652
Down Lisburn	911	213	112	41	0	0	0	0	0	1,277
Green Park Healthcare	2,075	1,215	695	149	0	0	0	0	0	4,134
Mater Infirmorum Hospital	1,430	592	152	24	0	1	1	2	8	2,210
Newry & Mourne	562	163	36	7	0	0	0	0	0	768
Royal Group of Hospitals	3,773	1,730	606	231	0	0	0	0	0	6,340
South and East Belfast	66	1	0	0	0	0	0	0	0	67
Sperrin Lakeland	1,161	404	87	14	0	0	0	0	0	1,666
Ulster Community & Hospitals	2,243	766	263	67	0	0	0	0	0	3,339
United Hospitals Group	2,813	893	442	176	0	0	0	0	0	4,324
Total	24,814	10,327	4,064	1,068	0	1	1	2	8	40,285

Source: CHI

Inpatient Completed Waits

Waiting times for completed inpatient waits are shown in Table 5. A total of 39,308 inpatients were admitted to hospital (excluding those who had previously refused an offer of admission) during the June 2006 quarter. 71.0% of patients received their treatment within 3 months of being placed on the waiting list and 98.8% received their treatment within 12 months.

Table 5 Completed Inpatient Waits

Quarter	Time Waiting in Months									Total
	0 - 2	3 - 5	6 - 8	9 - 11	12 - 14	15 - 17	18 - 20	21 - 23	24 +	
O - D 2003	72.7%	12.3%	5.4%	3.7%	2.0%	1.2%	0.9%	0.5%	1.5%	38,906
J - D 2003	73.0%	12.7%	5.1%	3.3%	2.0%	1.3%	0.8%	0.5%	1.2%	152,010
J - M 2004	74.4%	11.6%	4.8%	3.5%	1.9%	1.3%	0.6%	0.5%	1.3%	40,924
A - J 2004	74.6%	11.4%	5.9%	3.1%	1.9%	1.2%	0.6%	0.3%	0.9%	38,507
J - S 2004	73.1%	13.1%	5.4%	3.7%	1.9%	1.1%	0.7%	0.3%	0.7%	37,166
O - D 2004	73.4%	12.3%	5.5%	3.7%	2.3%	1.1%	0.7%	0.4%	0.7%	41,330
J - D 2004	73.9%	12.1%	5.4%	3.5%	2.0%	1.2%	0.6%	0.4%	0.9%	157,927
J - M 2005	72.9%	12.9%	4.8%	3.9%	1.9%	1.6%	0.8%	0.5%	0.7%	39,248
A - J 2005	74.1%	12.5%	6.2%	3.1%	2.0%	1.3%	0.5%	0.1%	0.3%	41,183
J - S 2005	72.0%	12.9%	5.4%	3.8%	2.4%	1.8%	0.9%	0.3%	0.3%	37,094
O - D 2005	72.7%	11.6%	6.1%	5.0%	2.9%	1.0%	0.4%	0.1%	0.2%	40,360
J - D 2005	72.9%	12.5%	5.6%	3.9%	2.3%	1.4%	0.6%	0.3%	0.4%	157,885
J - M 2006	70.2%	13.7%	6.9%	5.8%	2.3%	0.6%	0.2%	0.1%	0.3%	41,111
A - J 2006	71.0%	14.8%	8.2%	4.8%	0.8%	0.1%	0.1%	0.1%	0.1%	39,308

Source: CH2 Part 1

Outpatients

Headline Totals - Table 6

The number of patients waiting for a first outpatient appointment (including cancellations and deferrals) at the end of June 2006 stood at 180,363.

Over the quarter, comparing the end of June 2006 with the end of March 2006 (180,986), the total number has decreased by 623 (-0.3%).

Over the year, comparing the end of June 2006 with the end of June 2005 (177,419), the total number waiting increased by 2,944 (1.7%).

Excluding cancellations and deferrals, the quarterly and annual increase were 1.7% and 4.1% respectively.

Table 6: Quarterly Outpatient Waiting Lists

Waiting for:	Quarter Ending June 06	Change compared with end of previous quarter	Change compared with end same quarter - previous year
Excluding Cancellations and Deferrals	170,177	+ 2762	+ 6655
Cancellations and Deferrals	10,186	-3,385	-3,711
Total Waiting	180,363	-623	+ 2944

Waiting Times for Initial Outpatient Appointment¹ - Table 7

At the end of June 2006, the number of patients waiting 6 months and over was 69,095 or 38.3% of the total waiting.

Over the quarter, comparing the end of June 2006 with the end of March 2006, the number of people waiting 6 months and over decreased by 4,820 (-6.5%).

Over the year, comparing the end of June 2006 with the end of June 2005, the number of people waiting 6 months and over decreased by 1,666 (-2.4%).

Table 7 Patients Waiting 6 Months and Over¹ - June 2006

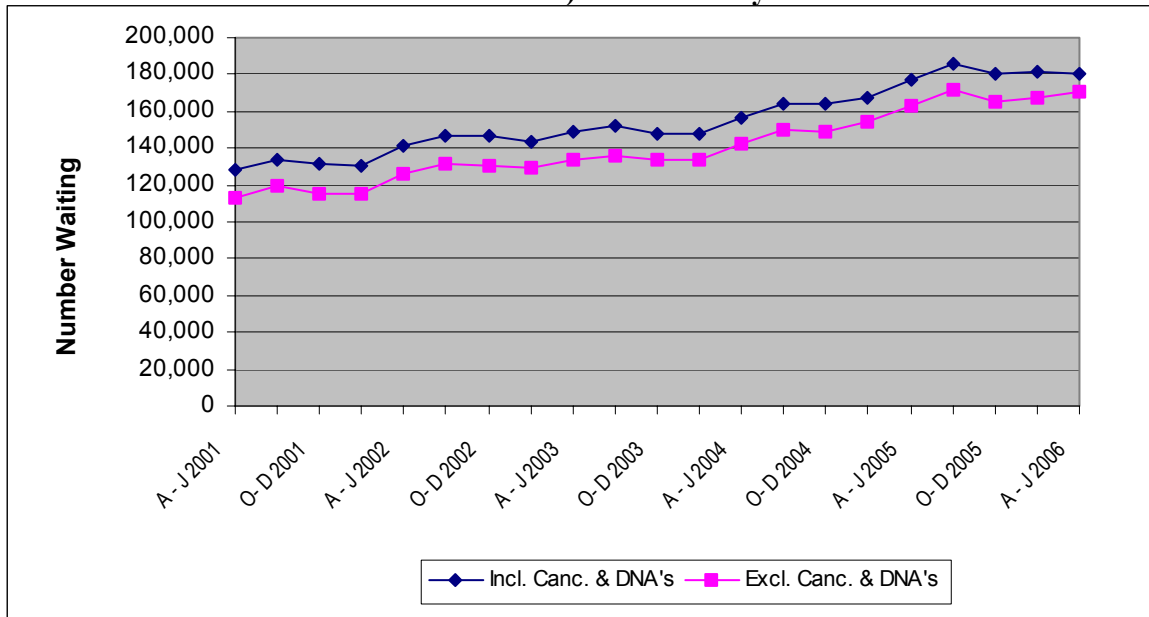
Waiting for:	Quarter Ending June 06	Change compared with end of previous quarter	Change compared with end same quarter - previous year
Excluding Cancellations and Deferrals	63,605	-1,608	+ 1058
Cancellations and Deferrals	5,490	-3,212	-2,724
Total Waiting	69,095	-4,820	-1,666

Source: CH3

¹ Refer to Technical Notes – point 3.

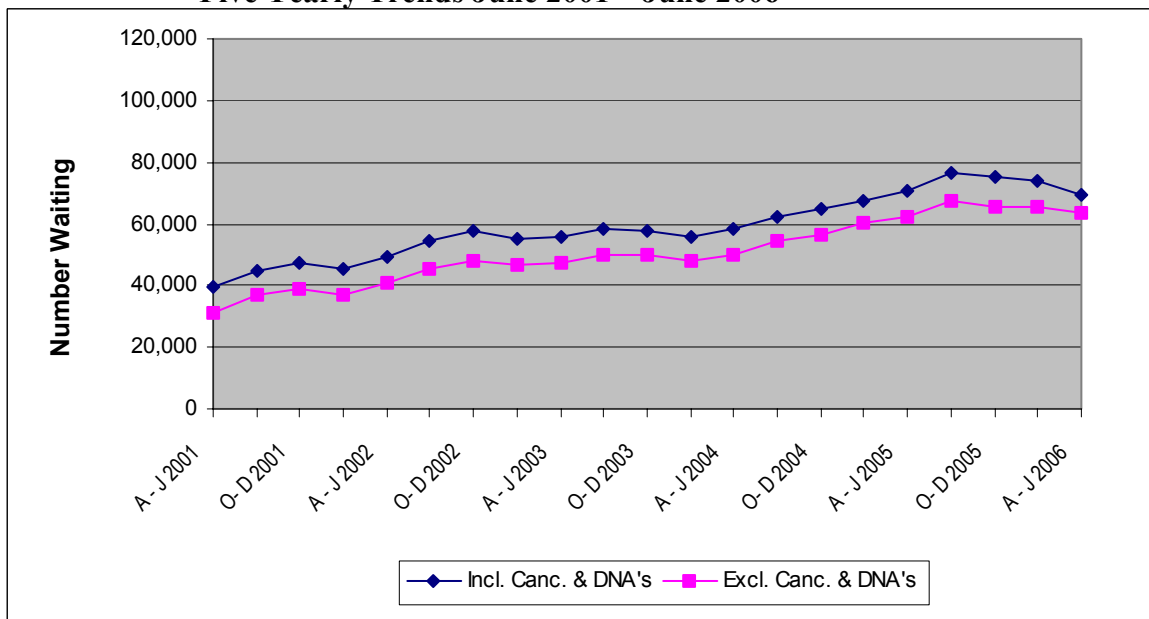
Figure 4 shows five yearly trends in the number of outpatients waiting for a first appointment. Figure 5 shows the same trends information for patients waiting 6 months and over for a first outpatient appointment.

Figure 4 Outpatients Waiting for a First Appointment (including and excluding cancellations and deferrals) – Five Yearly Trends June 2001 – June 2006



Source: CH3 Parts 1 & 2.

Figure 5 Patients waiting 6 months and over - Five Yearly Trends June 2001 – June 2006

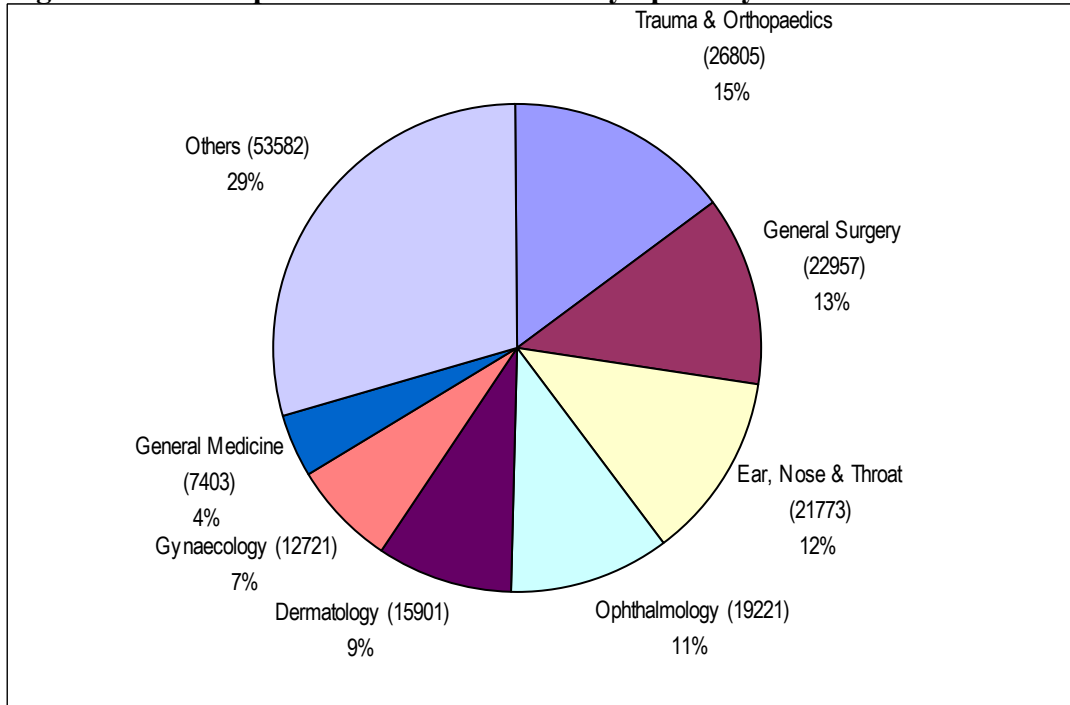


Source: CH3 Parts 1 & 2

Outpatients Waiting by Specialty

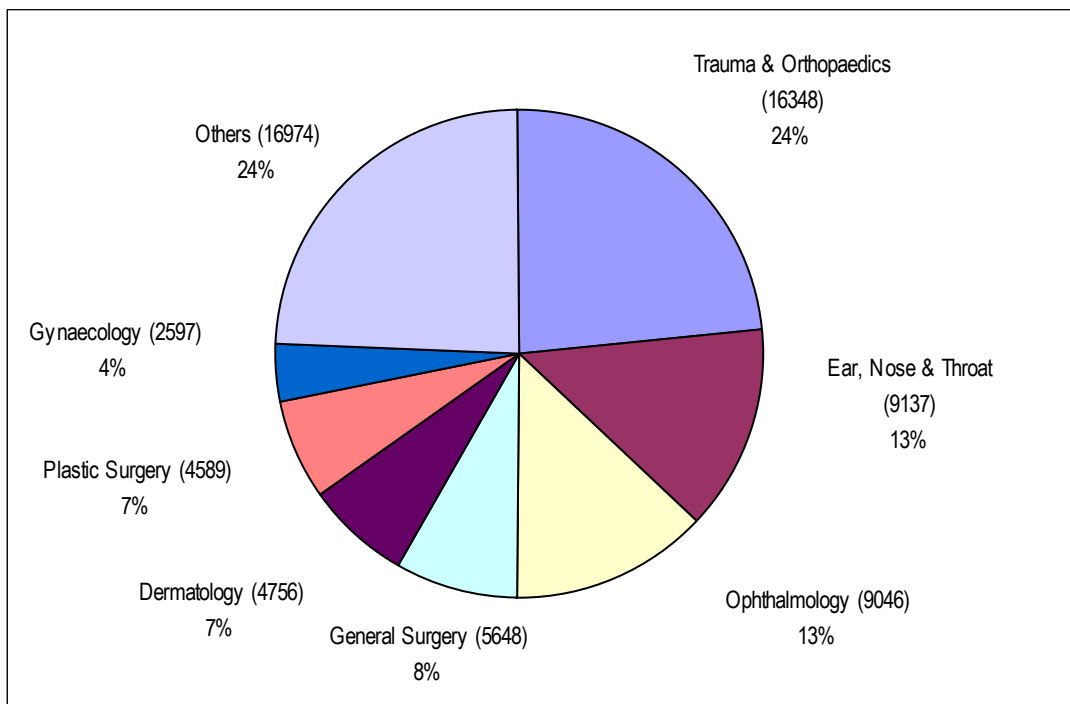
The majority of those waiting (71%) were within seven specialties: Trauma and Orthopaedic Surgery (T&O); General Surgery; Ear, Nose and Throat (ENT); Ophthalmology; Dermatology, Gynaecology (Gynae) and General Medicine (Figure 6a). Figures for patients waiting 6 months and over are shown in Figure 6b. Figures represent the total number waiting for their first outpatient appointment during the June 2006 quarter including those who have cancelled or missed a previous appointment.

Figure 6a Outpatients – Total Waiters by Specialty at the end of June 2006



Source: CH3.

Figure 6b Outpatients – Patients waiting 6 months and over¹ by Specialty at the end of June 2006



Source: CH3.

¹ Refer to Technical Notes – point 3.

Outpatient Waiting Time by Specialty

Waiting times for outpatients by specialty are shown in Tables 8a and 8b. The proportion of those waiting less than 6 months ranged from 100.0% in the Genito-Urinary Medicine specialty to 21.9% in Plastic Surgery. Overall three fifths (61.7%) of those waiting for treatment were waiting less than 6 months.

Table 8a Number of Patients Waiting for a First Appointment by Months Waiting and Specialty – June 2006

Specialty	Patients Waiting for an Appointment by Months Waiting									Total Number of Patients Awaiting Appointment
	0 - 2	3 - 5	6 - 8	9 - 11	12 - 14	15 - 17	18 - 20	21 - 23	24 +	
Trauma & Orthopaedics	6,530	3,927	3,068	2,726	2,300	1,670	1,271	1,137	4,176	26,805
General Surgery	11,994	5,315	3,089	1,345	609	283	170	108	44	22,957
Ear, Nose & Throat	7,581	5,055	2,770	1,877	1,357	892	585	482	1,174	21,773
Ophthalmology	6,046	4,129	2,979	2,085	1,440	871	634	376	661	19,221
Dermatology	7,601	3,544	1,852	1,352	703	278	252	122	197	15,901
Gynaecology	6,763	3,361	1,350	488	275	172	111	99	102	12,721
General Medicine	3,922	1,567	672	408	221	156	106	97	254	7,403
Plastic Surgery	716	570	399	374	335	229	219	230	2,803	5,875
Neurology	1,640	1,201	823	516	445	308	251	171	44	5,399
Cardiology	2,483	1,061	454	258	187	131	121	25	18	4,738
Urology	1,668	948	509	353	237	191	136	94	85	4,221
Rheumatology	1,476	840	483	313	249	158	116	51	102	3,788
Paediatrics	2,288	929	273	118	39	6	1	0	1	3,655
Oral Surgery	1,156	526	325	223	162	137	112	89	576	3,306
Mental Illness	1,609	704	183	67	53	30	11	3	5	2,665
Pain Management	671	434	301	195	123	69	52	62	323	2,230
Genito-Urinary Medicine	1,826	0	0	0	0	0	0	0	0	1,826
Restorative Dentistry	320	297	310	166	87	66	59	50	326	1,681
Gastroenterology	734	275	156	84	32	22	9	2	3	1,317
Geriatric Medicine	996	219	22	5	2	1	3	3	1	1,252
Other	6,054	2,292	1,296	770	432	215	169	134	267	11,629
All Specialties	74,074	37,194	21,314	13,723	9,288	5,885	4,388	3,335	11,162	180,363

Source: CH3

Table 8b Percentage of Patients Waiting for a First Appointment by Months Waiting and Specialty – June 2006

Specialty	Patients Waiting for an Appointment by Months Waiting								
	0 - 2	3 - 5	6 - 8	9 - 11	12 - 14	15 - 17	18 - 20	21 - 23	24+
Trauma & Orthopaedics	24.4%	14.7%	11.4%	10.2%	8.6%	6.2%	4.7%	4.2%	15.6%
General Surgery	52.2%	23.2%	13.5%	5.9%	2.7%	1.2%	0.7%	0.5%	0.2%
Ear, Nose & Throat	34.8%	23.2%	12.7%	8.6%	6.2%	4.1%	2.7%	2.2%	5.4%
Ophthalmology	31.5%	21.5%	15.5%	10.8%	7.5%	4.5%	3.3%	2.0%	3.4%
Dermatology	47.8%	22.3%	11.6%	8.5%	4.4%	1.7%	1.6%	0.8%	1.2%
Gynaecology	53.2%	26.4%	10.6%	3.8%	2.2%	1.4%	0.9%	0.8%	0.8%
General Medicine	53.0%	21.2%	9.1%	5.5%	3.0%	2.1%	1.4%	1.3%	3.4%
Plastic Surgery	12.2%	9.7%	6.8%	6.4%	5.7%	3.9%	3.7%	3.9%	47.7%
Neurology	30.4%	22.2%	15.2%	9.6%	8.2%	5.7%	4.6%	3.2%	0.8%
Cardiology	52.4%	22.4%	9.6%	5.4%	3.9%	2.8%	2.6%	0.5%	0.4%
Urology	39.5%	22.5%	12.1%	8.4%	5.6%	4.5%	3.2%	2.2%	2.0%
Rheumatology	39.0%	22.2%	12.8%	8.3%	6.6%	4.2%	3.1%	1.3%	2.7%
Paediatrics	62.6%	25.4%	7.5%	3.2%	1.1%	0.2%	0.0%	0.0%	0.0%
Oral Surgery	35.0%	15.9%	9.8%	6.7%	4.9%	4.1%	3.4%	2.7%	17.4%
Mental Illness	60.4%	26.4%	6.9%	2.5%	2.0%	1.1%	0.4%	0.1%	0.2%
Pain Management	30.1%	19.5%	13.5%	8.7%	5.5%	3.1%	2.3%	2.8%	14.5%
Genito-Urinary Medicine	100.0%	0.0%	0.0%	0.0%	0.0%	0.0%	0.0%	0.0%	0.0%
Restorative Dentistry	19.0%	17.7%	18.4%	9.9%	5.2%	3.9%	3.5%	3.0%	19.4%
Gastroenterology	55.7%	20.9%	11.8%	6.4%	2.4%	1.7%	0.7%	0.2%	0.2%
Geriatric Medicine	79.6%	17.5%	1.8%	0.4%	0.2%	0.1%	0.2%	0.2%	0.1%
Other	52.1%	19.7%	11.1%	6.6%	3.7%	1.8%	1.5%	1.2%	2.3%
All Specialties	41.1%	20.6%	11.8%	7.6%	5.1%	3.3%	2.4%	1.8%	6.2%

Source: CH3.

Outpatient Waiting Times by Provider Trust

Waiting times for outpatients by Trust are shown in Table 9.

Table 9 Number of Patients Waiting for a First Outpatient Appointment by Provider Trust and Months Waiting – June 2006

Provider Trust	Patients Waiting for an Appointment by Months Waiting									Total Number
	0 - 2	3 - 5	6 - 8	9 - 11	12 - 14	15 - 17	18 - 20	21 - 23	24 +	
Altnagelvin Group	9,264	4,492	2,483	1,419	979	517	346	184	88	19,772
Armagh & Dungannon	1,022	339	180	104	107	55	40	25	42	1,914
Belfast City Hospital	7,152	2,763	1,736	987	553	364	260	154	95	14,064
Causeway	2,437	1,038	477	243	101	50	29	24	33	4,432
Craigavon & Banbridge	226	58	21	12	16	8	0	0	0	341
Craigavon Area Hospital Group	6,743	4,070	2,252	1,346	618	372	206	90	264	15,961
Down Lisburn	3,228	1,362	840	504	208	122	102	64	25	6,455
Foyle Community	257	157	40	23	14	13	4	4	47	559
Green Park Healthcare	3,663	2,296	1,776	1,496	1,166	859	562	607	1,442	13,867
Homefirst Community	505	189	26	2	0	0	0	0	0	722
Mater Infirmorum Hospital	3,596	1,840	1,069	543	153	49	90	42	10	7,392
North and West Belfast	5	26	0	0	0	0	0	0	0	31
Newry & Mourne	3,258	1,512	600	189	84	25	26	9	2	5,705
Royal Group of Hospitals	13,620	7,234	4,558	3,420	2,759	1,857	1,493	1,225	4,279	40,445
South and East Belfast	274	47	6	2	0	0	0	0	0	329
Sperrin Lakeland	2,765	1,162	447	85	45	14	3	3	4	4,528
Ulster Community & Hospitals	9,138	5,459	2,809	1,745	1,183	717	564	531	3,723	25,869
United Hospitals Group	6,921	3,150	1,994	1,603	1,302	863	663	373	1,108	17,977
Total	74,074	37,194	21,314	13,723	9,288	5,885	4,388	3,335	11,162	180,363

Source: CH3

Outpatient Waiting Time by Programme of Care

Waiting times for a first outpatient appointment by programme of care are shown in Table 10. The vast majority (96.7%) of patients were awaiting their first outpatient appointment in the Acute Services Programme of Care.

Table 10 Number of Patients Waiting for a First Appointment by Months Waiting and Programme of Care – June 2006

Programme of Care	Patients Waiting for an Appointment by Months Waiting									Total Number
	0 - 2	3 - 5	6 - 8	9 - 11	12 - 14	15 - 17	18 - 20	21 - 23	24 +	
Acute Services	70,419	35,780	20,871	13,579	9,196	5,827	4,362	3,308	11,098	174,440
Elderly Care	1,406	378	93	17	11	2	3	3	2	1,915
Mental Health	2,212	993	343	127	78	56	23	24	62	3,918
Learning Disability	37	43	7	0	3	0	0	0	0	90
All POCs	74,074	37,194	21,314	13,723	9,288	5,885	4,388	3,335	11,162	180,363

Source: CH3

Outpatient Completed Waits

Waiting times for completed outpatient waits are shown in Table 11. During the June 2006 quarter a total of 90,664 outpatients attended their first appointment without having cancelled or missed a previous appointment. 68.3% of patients attended their first outpatient appointment within 3 months of being placed on the waiting list and 94.5% had their first outpatient appointment within 12 months.

Table 11 Completed Outpatient Waits for First Appointment³

A - J 2003	72.1%	15.8%	5.8%	2.8%	1.4%	0.8%	0.4%	0.3%	0.7%	84,963
J - S 2003	69.5%	18.4%	5.7%	2.5%	1.5%	0.7%	0.5%	0.3%	0.9%	80,128
O - D 2003	69.6%	17.9%	5.6%	2.6%	1.7%	0.8%	0.5%	0.4%	0.9%	88,711
J - D 2003	70.3%	17.3%	5.7%	2.7%	1.5%	0.8%	0.5%	0.3%	0.9%	338,856
J - M 2004	69.8%	17.1%	5.2%	2.9%	1.7%	1.3%	0.6%	0.4%	1.1%	91,496
A - J 2004	71.8%	15.9%	5.5%	2.7%	1.7%	0.9%	0.6%	0.3%	0.6%	88,213
J - S 2004	70.6%	17.9%	5.4%	2.5%	1.4%	0.8%	0.4%	0.3%	0.6%	84,455
O - D 2004	68.9%	17.3%	7.0%	2.6%	1.4%	0.9%	0.7%	0.4%	0.7%	91,915
J - D 2004	70.3%	17.1%	5.8%	2.7%	1.6%	1.0%	0.6%	0.3%	0.8%	356,079
J - M 2005	68.4%	16.4%	7.0%	3.3%	1.7%	1.3%	0.6%	0.4%	0.9%	86,944
A - J 2005	70.1%	15.6%	6.9%	2.9%	1.9%	0.7%	0.5%	0.3%	1.0%	91,489
J - S 2005	70.8%	16.0%	5.7%	2.9%	1.7%	1.1%	0.5%	0.4%	0.9%	82,721
O - D 2005	67.7%	15.9%	7.5%	3.1%	1.9%	1.1%	0.9%	0.6%	1.3%	91,969
J - D 2005	69.2%	16.0%	6.8%	3.1%	1.8%	1.0%	0.6%	0.4%	1.0%	353,123
J - M 2006	68.0%	15.6%	7.6%	3.7%	1.4%	1.1%	1.0%	0.6%	1.1%	91,695
A - J 2006	68.3%	15.0%	7.2%	4.0%	1.7%	0.9%	0.9%	0.8%	1.3%	90,664

Source: CH4 Part 1

³ Refer to Technical Notes – point 15.

Technical Notes

1. The sources for the data contained in this release are the Information Returns CH1, CH2, CH3 and CH4. These returns collect information from Hospital Trusts on a quarterly basis.
2. Trust based information (CH1, CH2, CH3 and CH4) returns include all patients living outside Northern Ireland and all privately funded patients waiting for treatment in Health Service hospitals. This Trust based information falls within the scope of National Statistics.
3. New tables (Tables 2 and 7) providing the number of patients waiting 6 months and over for both inpatients waiting and patients waiting for first outpatient appointment have been included this quarter. Patients waiting 6 months and over include all patients in the following time bands: 6-8, 9-11, 12-14, 15-17, 18-20, 21-23 and 24+ months.
4. Waiting time relates to the number of completed months a patient has been waiting (or in the case for completed waits, how long a patient had waited) for either their first outpatient appointment or for inpatient admission. For example, a patient waiting 11 months and 30 days would be included in the 9-11 month category and a patient waiting 12 months and 01 day would be included in the 12-14 month category.
5. Inpatient waiting list data comprises the number of patients waiting for ordinary admission to hospital and the number of patients waiting for day case treatment.
6. Ordinary admissions include both (a) patients admitted electively with the expectation that they will remain in hospital for at least one night, and (b) non-elective admissions (e.g. emergency admissions). A patient who is admitted with either of the above intentions, but who leaves hospital for any reason without staying overnight, is still counted as an ordinary admission. Day cases are not included.
7. Day Cases are patients admitted electively during the course of a day with the intention of receiving care who do not require the use of a hospital bed overnight and who return home as scheduled. If this original intention is not fulfilled and the patient stays overnight, such a patient is counted as an ordinary admission.
8. The waiting list inpatient figures presented include people waiting to be admitted as inpatients either as day cases or ordinary admissions. They do not include:
 - Patients admitted as emergency cases;
 - Outpatients;
 - Patients undergoing a planned programme of treatment e.g. a series of admissions for chemotherapy;
 - Maternity (specialties 510 and 520);
 - Patients already in hospitals but included on other waiting lists;
 - Patients who are temporarily suspended from waiting lists.
9. Waiting time begins from the date the clinician decided to admit the patient. Patients subsequently offered a date but unable to attend have their waiting times calculated from the most recent date offered. These are known as self-deferred cases and are included in the total number waiting.
10. Where the symbol '<0.1%' appears (Table 3b), this refers to a figure of less than 0.05% which would otherwise appear as 0.0% in the table due to rounding.

11. The number of people waiting for inpatient admission at 31 March 2006 has been revised from 41,495 to 41,508. This is due to an amendment received from the Mater Infirmorum Hospital HSS Trust.
12. Outpatients are defined as patients still waiting for their first outpatient appointment at the end of the quarter. An outpatient appointment is to enable a patient to see a consultant, a member of his firm or locum for such a member, in respect of one referral.
13. Outpatient waiting list figures presented do not include maternity specialties 510 and 520.
14. The number of people awaiting an initial outpatient appointment at 31 March 2006 has been revised from 181,038 to 180,986. This is due to amendments received from Royal Group of Hospitals, Green Park Healthcare and Ulster Community & Hospitals HSS Trusts.
15. Due to reasons beyond the control of the Trust, United Hospitals HSS Trust has been unable to produce CH4 data for all quarters between March 2001 and June 2006. This Trust has provided estimated totals for these quarters and estimates for each time band have been calculated. These new estimates for the missing data for the United Group of Hospitals have been included in the data shown in Table 9. When CH4 data becomes available these estimates will be recast.
16. Department of Health, Social Services and Public Safety policy is to publish revised figures with subsequent statistical releases unless it is decided that the magnitude of the change merits earlier notification.
17. Figures relating to the quarter ending 30th September 2006 will be released on Thursday, 7th December 2006.
18. For general enquiries about National Statistics, contact the National Statistics Public Service on

020 7533 5888

minicom: 01633 812399

E-mail: info@statistics.gov.uk

Fax: 01633 652747

Letters: room DG/18, Drummond Gate,
LONDON SW1V 2QQ

You can also find National Statistics on the internet – Go to www.statistics.gov.uk.

Additional Information

Further information on waiting lists in Northern Ireland is available from:

Office Information Manager
Hospital Information Branch
Department of Health, Social Services and Public Safety
Annexe 2
Castle Buildings
Stormont
BT4 3SQ

E-mail: rib@dhsspsni.gov.uk

Internet address: http://www.dhsspsni.gov.uk/stats-hospital_community_statistics#waiting

