

# Statistics Release



Department of  
**Health, Social Services  
and Public Safety**

An Roinn  
**Sláinte, Seirbhísí Sóisialta  
agus Sábháilteachta Poiblí**

[www.dhsspsni.gov.uk](http://www.dhsspsni.gov.uk)

07 December 2006

## Northern Ireland Waiting Lists – September 2006

This statistics release gives details of the number of people waiting for inpatient or outpatient treatment at hospitals in Northern Ireland at the end of September 2006, the most recent quarter for which figures are available.

### Inpatients

#### Headline Totals – Table 1

The total number of patients waiting to be admitted to hospitals in Northern Ireland at the end of September 2006 stood at 40,707.

Over the quarter, comparing the end of September 2006 with the end of June 2006 (40,285), the total number waiting has increased by 422 (+1.0%).

Over the year, comparing the end of September 2006 with the end of September 2005 (46,944), the total number waiting decreased by 6,237 (-13.3%).

**Table 1: Quarterly Inpatient Waiting Lists – September 2006**

Waiting for:	Quarter Ending September 2006	Change compared with end of previous quarter	Change compared with end same quarter – previous year
Ordinary Admissions	14,846	-183	-3,102
Day case Admissions	25,861	+ 605	-3,135
Total Waiting	40,707	+ 422	-6,237

Source: CH1

**Detailed notes and definitions are provided in the Technical Notes.**



#### A National Statistics Publication

National Statistics are produced to high professional standards set out in the National Statistics Code of Practice. They undergo regular quality assurance reviews to ensure that they meet customer needs. They are produced free from any political interference.

## Numbers Waiting for Ordinary Admission and Day Case Treatment

People on the inpatient waiting list in Northern Ireland can be waiting for admission to hospital as day cases or as ordinary admissions.

Of the 40,707 people waiting for admission to hospital at the end of September 2006, 14,846 (36.5%) were waiting for ordinary admission and 25,861 (63.5%) were waiting for day case admission (Table 1).

Since the end of June 2006, the number of cases waiting for ordinary admission has decreased by 183 (-1.2%) and the number waiting for day case admission has increased by 605 (+2.4%).

In comparison with September 2005, the number of cases waiting for ordinary admission has decreased by 3,102 (-17.3%) and the number waiting for day case admission has decreased by 3,135 (-10.8%).

## Waiting Times for Ordinary Admission and Day Case Treatment<sup>1</sup> – Table 2

At the end of September 2006, the number of patients waiting 6 months and over was 3,786 or 9.3% of the total waiting.

Over the quarter, comparing the end of September 2006 with the end of June 2006, the number of people waiting 6 months and over decreased by 1,358 (-26.4%).

Over the year, comparing the end of September 2006 with the end of September 2005, the number of people waiting 6 months and over decreased by 8,136 (-68.2%).

**Table 2 Patients Waiting 6 Months and Over<sup>1</sup> – September 2006**

<b>Waiting for:</b>	<b>Quarter Ending September 06</b>	<b>Change compared with end of previous quarter</b>	<b>Change compared with end same quarter - previous year</b>
Ordinary admissions	2,067	-618	-4,227
Day case admissions	1,719	-740	-3,909
<b>Total Waiting</b>	<b>3,786</b>	<b>-1,358</b>	<b>-8,136</b>

Source: CH1

<sup>1</sup> Refer to Technical Notes – point 3.

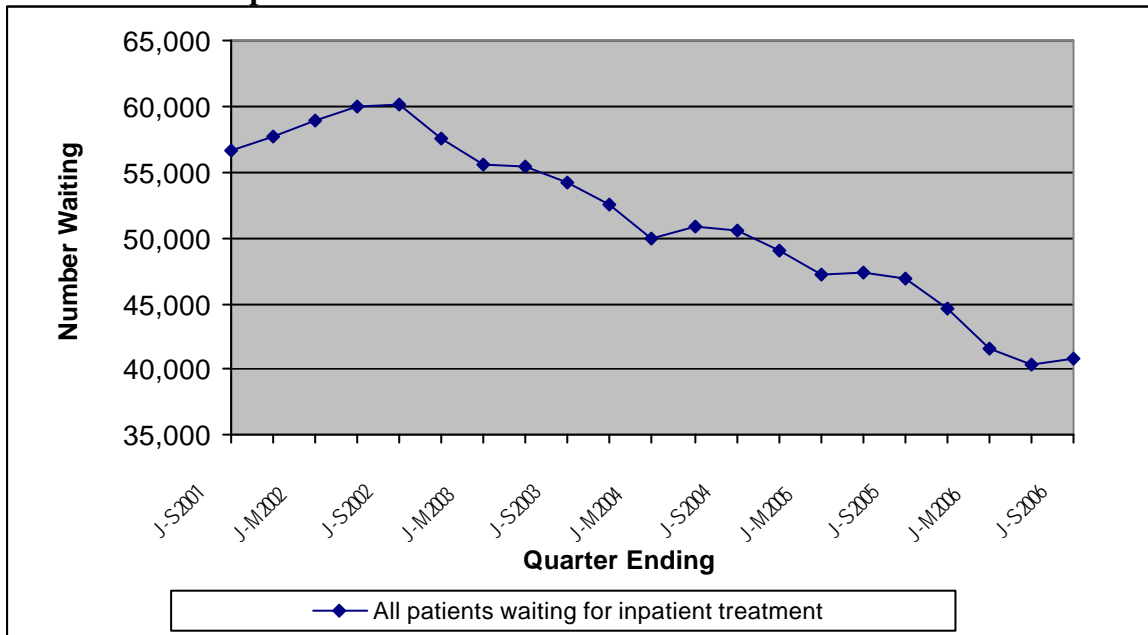
## Peak Figures

The end of September 2006 total of 40,707 on the inpatient waiting list represents a decrease of 19,483 (-32.4%) on the peak waiting list figure of 60,190 (end September 2002).

## Trends

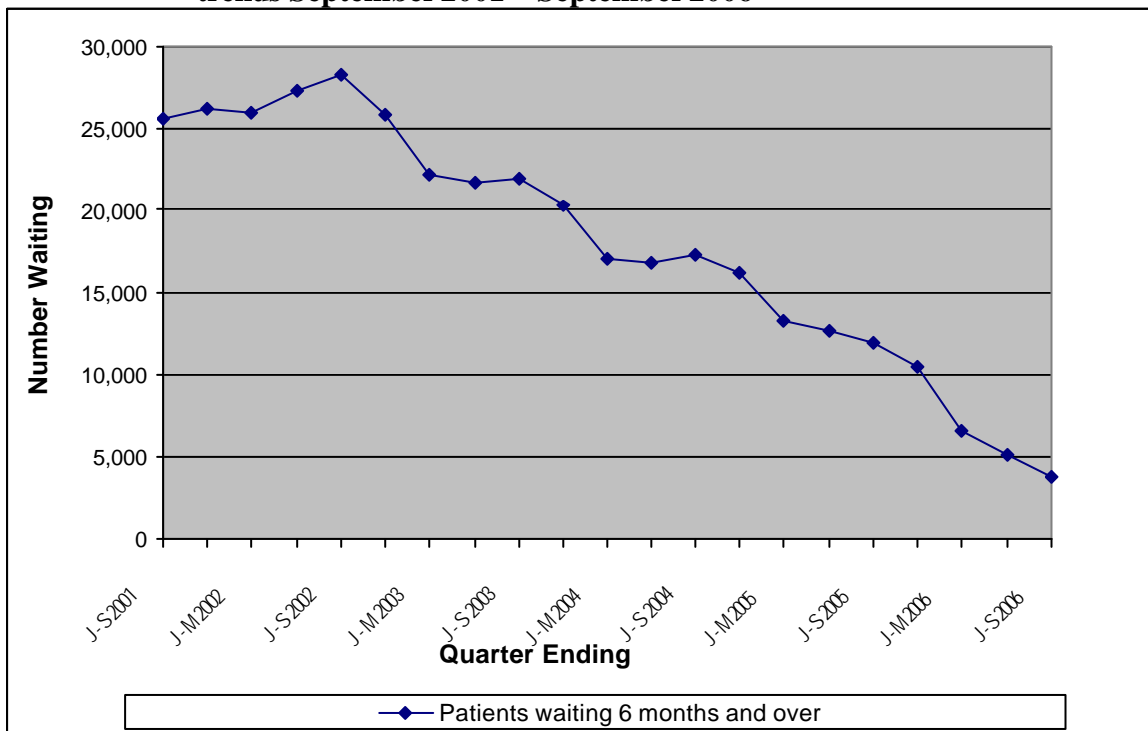
The total number of people waiting for inpatient treatment was on a generally upward trend from June 2001, and rose to peak in September 2002. There has been an overall downward trend since this peak. However, the total number of people waiting increased slightly during the quarter ending September 2006 (Figure 1). Patients waiting 6 months and over have been generally on a downward trend since September 2002 (Figure 2).

**Figure 1 Total Quarterly Waiting Lists – Five yearly trends September 2001 – September 2006**



Source: CH1

**Figure 2 Quarterly Waiting Lists Patients waiting 6 months and over<sup>1</sup> - Five yearly trends September 2001 – September 2006**

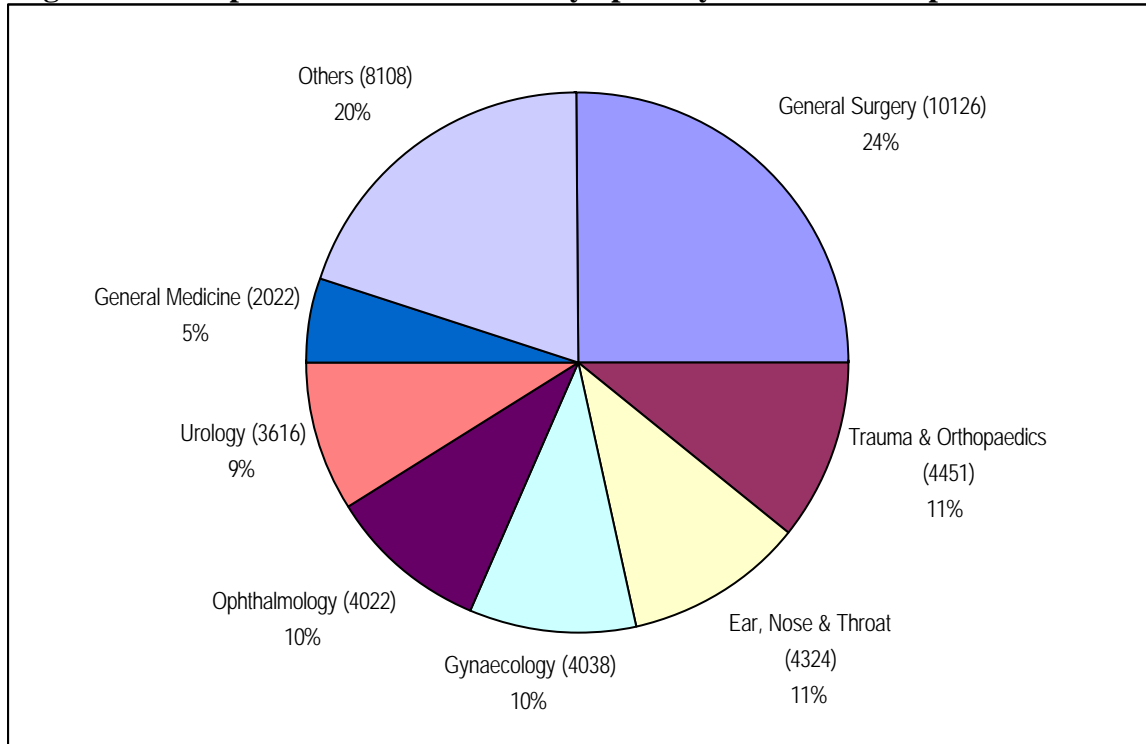


Source: CH1 <sup>1</sup> Refer to Technical Notes – point 3.

## Inpatients Waiting by Specialty

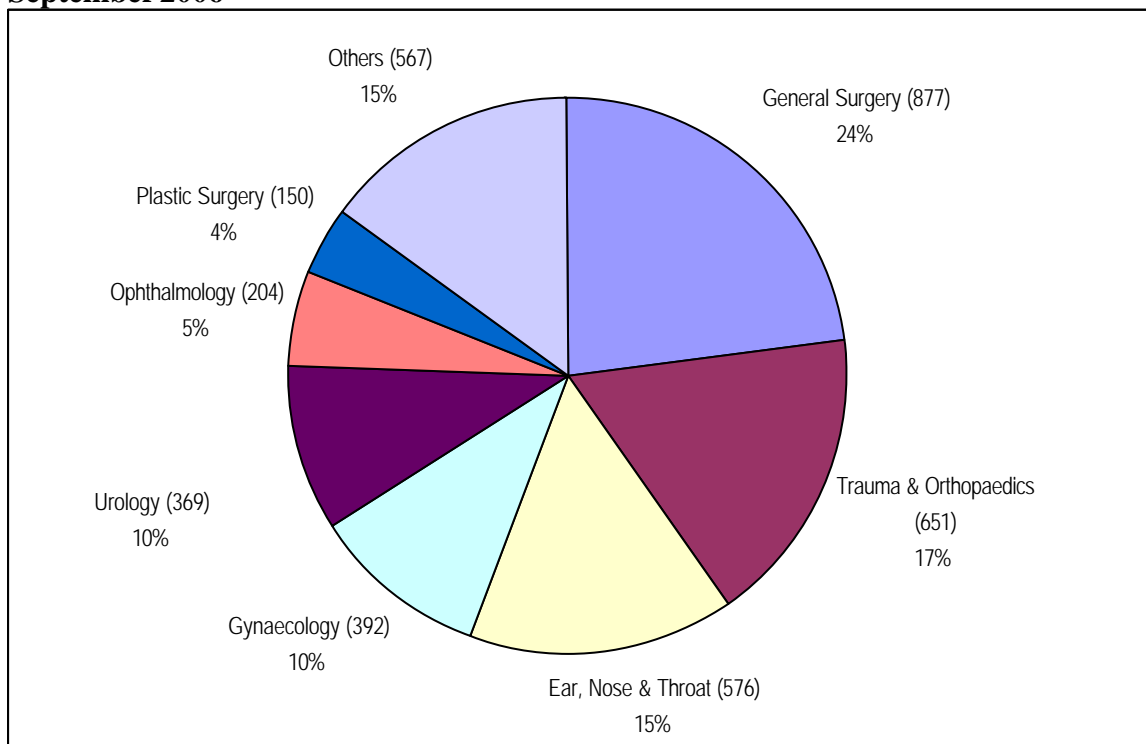
The overwhelming majority of those waiting (80.1%) were within seven specialties: General Surgery; Trauma and Orthopaedic Surgery (T&O); Ear, Nose and Throat (ENT); Gynaecology (Gynae); Ophthalmology, Urology and General Medicine (Figure 3a). Figures for patients waiting 6 months and over are shown in Figure 3b.

**Figure 3a Inpatients - Total Waiters by Specialty at the end of September 2006**



Source: CHI

**Figure 3b Inpatients – Patients waiting 6 months and over<sup>1</sup> by Specialty at the end of September 2006**



Source: CHI

<sup>1</sup> Refer to Technical Notes – point 3.

## Inpatient Waiting Time by Specialty

Waiting times for inpatients by specialty are shown in Tables 3a and 3b. Overall 90.7% of those waiting for admission were waiting less than 6 months. More than 99% of patients were waiting for treatment in the Acute Services Programme of Care.

**Table 3a Number of Patients Waiting for Admission by Months Waiting and Specialty – September 2006<sup>2</sup>**

Specialty	Patients Waiting for Admission by Months Waiting										Total Number of Patients Awaiting Admission
	0 - 2	3 - 5	6 - 8	9 - 11	12 - 14	15 - 17	18 - 20	21 - 23	24 +		
General Surgery	6,649	2,600	876	1	0	0	0	0	0	0	10,126
Trauma & Orthopaedics	2,255	1,545	651	0	0	0	0	0	0	0	4,451
Ear, Nose & Throat	2,190	1,558	576	0	0	0	0	0	0	0	4,324
Gynaecology	2,665	981	392	0	0	0	0	0	0	0	4,038
Ophthalmology	2,639	1,179	204	0	0	0	0	0	0	0	4,022
Urology	2,206	1,041	369	0	0	0	0	0	0	0	3,616
General Medicine	1,509	438	75	0	0	0	0	0	0	0	2,022
Gastroenterology	1,279	459	137	0	0	0	0	0	0	0	1,875
Cardiology	881	389	63	2	0	0	1	0	0	0	1,336
Plastic Surgery	517	316	150	0	0	0	0	0	0	0	983
Pain Management	475	217	38	0	0	0	0	0	0	0	730
Rheumatology	510	170	39	0	0	0	0	0	0	0	719
Paediatric Surgery	235	185	69	0	0	0	0	0	0	0	489
Dermatology	278	143	40	0	0	0	0	0	0	0	461
Oral Surgery	240	74	38	0	0	0	0	0	0	0	352
Cardiac Surgery	159	137	0	0	0	0	0	0	0	0	296
Neurology	56	46	33	0	0	0	0	0	0	0	135
Neurosurgery	60	23	9	0	0	0	0	0	0	0	92
Accident & Emergency	72	18	1	0	0	0	0	0	0	0	91
General Practice (Other)	76	0	0	0	0	0	0	0	0	0	76
Other	391	60	22	0	0	0	0	0	0	0	473
<b>All Specialties</b>	<b>25,342</b>	<b>11,579</b>	<b>3,782</b>	<b>3</b>	<b>0</b>	<b>0</b>	<b>1</b>	<b>0</b>	<b>0</b>	<b>0</b>	<b>40,707</b>

Source: CHI

<sup>2</sup>Refer to Technical Notes – point 10.

**Table 3b Percentage of Patients Waiting for Admission by Months Waiting and Specialty – September 2006<sup>3</sup>**

Specialty	Patients Waiting for Admission by Months Waiting								
	0 - 2	3 - 5	6 - 8	9 - 11	12 - 14	15 - 17	18 - 20	21 - 23	24 +
General Surgery	65.7%	25.7%	8.7%	< 0.1%	0.0%	0.0%	0.0%	0.0%	0.0%
Trauma & Orthopaedics	50.7%	34.7%	14.6%	0.0%	0.0%	0.0%	0.0%	0.0%	0.0%
Ear, Nose & Throat	50.6%	36.0%	13.3%	0.0%	0.0%	0.0%	0.0%	0.0%	0.0%
Gynaecology	66.0%	24.3%	9.7%	0.0%	0.0%	0.0%	0.0%	0.0%	0.0%
Ophthalmology	65.6%	29.3%	5.1%	0.0%	0.0%	0.0%	0.0%	0.0%	0.0%
Urology	61.0%	28.8%	10.2%	0.0%	0.0%	0.0%	0.0%	0.0%	0.0%
General Medicine	74.6%	21.7%	3.7%	0.0%	0.0%	0.0%	0.0%	0.0%	0.0%
Gastroenterology	68.2%	24.5%	7.3%	0.0%	0.0%	0.0%	0.0%	0.0%	0.0%
Cardiology	65.9%	29.1%	4.7%	0.1%	0.0%	0.0%	0.1%	0.0%	0.0%
Plastic Surgery	52.6%	32.1%	15.3%	0.0%	0.0%	0.0%	0.0%	0.0%	0.0%
Pain Management	65.1%	29.7%	5.2%	0.0%	0.0%	0.0%	0.0%	0.0%	0.0%
Rheumatology	70.9%	23.6%	5.4%	0.0%	0.0%	0.0%	0.0%	0.0%	0.0%
Paediatric Surgery	48.1%	37.8%	14.1%	0.0%	0.0%	0.0%	0.0%	0.0%	0.0%
Dermatology	60.3%	31.0%	8.7%	0.0%	0.0%	0.0%	0.0%	0.0%	0.0%
Oral Surgery	68.2%	21.0%	10.8%	0.0%	0.0%	0.0%	0.0%	0.0%	0.0%
Cardiac Surgery	53.7%	46.3%	0.0%	0.0%	0.0%	0.0%	0.0%	0.0%	0.0%
Neurology	41.5%	34.1%	24.4%	0.0%	0.0%	0.0%	0.0%	0.0%	0.0%
Neurosurgery	65.2%	25.0%	9.8%	0.0%	0.0%	0.0%	0.0%	0.0%	0.0%
Accident & Emergency	79.1%	19.8%	1.1%	0.0%	0.0%	0.0%	0.0%	0.0%	0.0%
General Practice (Other)	100.0%	0.0%	0.0%	0.0%	0.0%	0.0%	0.0%	0.0%	0.0%
Other	82.7%	12.7%	4.7%	0.0%	0.0%	0.0%	0.0%	0.0%	0.0%
<b>All Specialties</b>	<b>62.3%</b>	<b>28.4%</b>	<b>9.3%</b>	<b>&lt; 0.1%</b>	<b>0.0%</b>	<b>0.0%</b>	<b>&lt; 0.1%</b>	<b>0.0%</b>	<b>0.0%</b>

Source: CHI

<sup>3</sup>Refer to Technical Notes – point 11

## Inpatient Waiting Times by Provider Trust

Waiting times for inpatients by Trust are shown in Table 4.

**Table 4 Number of Patients Waiting for Admission by Provider Trust and by Months Waiting – September 2006<sup>2</sup>**

Provider Trust	Patients Waiting for Admission by Months Waiting									Total Number of Patients Awaiting Admission
	0 - 2	3 - 5	6 - 8	9 - 11	12 - 14	15 - 17	18 - 20	21 - 23	24 +	
Altnagelvin Group	2,646	1,160	390	0	0	0	0	0	0	4,196
Belfast City Hospital	3,001	1,512	644	0	0	0	0	0	0	5,157
Causeway	1,115	298	1	0	0	0	0	0	0	1,414
Craigavon Area Hospital Group	3,470	1,750	590	0	0	0	0	0	0	5,810
Down Lisburn	999	321	52	1	0	0	0	0	0	1,373
Green Park Healthcare	2,184	1,329	488	0	0	0	0	0	0	4,001
Mater Infirmorum Hospital	1,433	789	189	2	0	0	0	0	0	2,413
Newry & Mourne	538	170	53	0	0	0	0	0	0	761
Royal Group of Hospitals	3,480	2,034	752	0	0	0	0	0	0	6,266
South and East Belfast	17	1	1	0	0	0	0	0	0	19
Sperrin Lakeland	1,175	397	66	0	0	0	0	0	0	1,638
Ulster Community & Hospitals	2,507	876	242	0	0	0	0	0	0	3,625
United Hospitals Group	2,777	942	314	0	0	0	1	0	0	4,034
<b>Total</b>	<b>25,342</b>	<b>11,579</b>	<b>3,782</b>	<b>3</b>	<b>0</b>	<b>0</b>	<b>1</b>	<b>0</b>	<b>0</b>	<b>40,707</b>

Source: CHI

<sup>2</sup>Refer to Technical Notes – point 10.

## Inpatient Completed Waits – September 2006

Waiting times for completed inpatient waits are shown in Table 5. A total of 36,752 inpatients were admitted to hospital (excluding those who had previously refused an offer of admission) during the September 2006 quarter. 69.6% of patients received their treatment within 3 months of being placed on the waiting list and 86.0% received their treatment within 6 months.

**Table 5 Completed Inpatient Waits<sup>4</sup>**

Quarter	Time Waiting in Months									Total
	0 - 2	3 - 5	6 - 8	9 - 11	12 - 14	15 - 17	18 - 20	21 - 23	24 +	
J - M 2003	73.6%	12.0%	4.6%	3.1%	2.2%	1.7%	0.9%	0.5%	1.3%	38,987
A - J 2003	73.9%	12.5%	5.2%	3.1%	2.0%	1.2%	0.7%	0.4%	1.0%	38,512
J - S 2003	71.9%	14.1%	5.2%	3.5%	1.7%	1.2%	0.7%	0.4%	1.1%	35,605
O - D 2003	72.7%	12.3%	5.4%	3.7%	2.0%	1.2%	0.9%	0.5%	1.5%	38,906
<b>J - D 2003</b>	73.0%	12.7%	5.1%	3.3%	2.0%	1.3%	0.8%	0.5%	1.2%	152,010
J - M 2004	74.4%	11.6%	4.8%	3.5%	1.9%	1.3%	0.6%	0.5%	1.3%	40,924
A - J 2004	74.6%	11.4%	5.9%	3.1%	1.9%	1.2%	0.6%	0.3%	0.9%	38,507
J - S 2004	73.1%	13.1%	5.4%	3.7%	1.9%	1.1%	0.7%	0.3%	0.7%	37,166
O - D 2004	73.4%	12.3%	5.5%	3.7%	2.3%	1.1%	0.7%	0.4%	0.7%	41,330
<b>J - D 2004</b>	73.9%	12.1%	5.4%	3.5%	2.0%	1.2%	0.6%	0.4%	0.9%	157,927
J - M 2005	72.9%	12.9%	4.8%	3.9%	1.9%	1.6%	0.8%	0.5%	0.7%	39,248
A - J 2005	74.1%	12.5%	6.2%	3.1%	2.0%	1.3%	0.5%	0.1%	0.3%	41,183
J - S 2005	72.0%	12.9%	5.4%	3.8%	2.4%	1.8%	0.9%	0.3%	0.3%	37,094
O - D 2005	72.7%	11.6%	6.1%	5.0%	2.9%	1.0%	0.4%	0.1%	0.2%	40,360
<b>J - D 2005</b>	72.9%	12.5%	5.6%	3.9%	2.3%	1.4%	0.6%	0.3%	0.4%	157,885
J - M 2006	70.2%	13.7%	6.9%	5.8%	2.3%	0.6%	0.2%	0.1%	0.3%	41,111
A - J 2006	71.0%	14.8%	8.2%	4.8%	0.8%	0.1%	0.1%	0.1%	0.1%	39,308
J - S 2006	69.6%	16.4%	8.7%	4.4%	0.5%	0.2%	0.1%	0.0%	0.1%	36,752

Source: CH2 Part 1

<sup>4</sup>Refer to Technical Notes – point 12

# Outpatients

## Headline Totals - Table 6

The number of patients waiting for a first outpatient appointment (including cancellations and deferrals) at the end of September 2006 stood at 177,685.

Over the quarter, comparing the end of September 2006 with the end of June 2006 (180,384), the total number has decreased by 2,699 (-1.5%).

Over the year, comparing the end of September 2006 with the end of September 2005 (185,782), the total number waiting decreased by 8,097 (-4.4%).

Excluding cancellations and deferrals, the quarterly and annual decreases were 1.7% and 2.6% respectively.

**Table 6: Quarterly Outpatient Waiting Lists<sup>5</sup> - September 2006**

Waiting for:	Quarter Ending September 06	Change compared with end of previous quarter	Change compared with end same quarter - previous year
Excluding Cancellations and Deferrals	167,356	-2,847	-4,463
Cancellations and Deferrals	10,329	+ 148	-3,634
<b>Total Waiting</b>	<b>177,685</b>	<b>-2,699</b>	<b>-8,097</b>

Source: CH3

<sup>5</sup> Refer to Technical Notes – point 16 & 17.

## Waiting Times for Initial Outpatient Appointment - Table 7

At the end of September 2006, the number of patients waiting 6 months and over was 57,928 or 32.6% of the total waiting.

Over the quarter, comparing the end of September 2006 with the end of June 2006, the number of people waiting 6 months and over decreased by 11,168 (-16.2%).

Over the year, comparing the end of September 2006 with the end of September 2005, the number of people waiting 6 months and over decreased by 18,304 (-24.0%).

**Table 7 Patients Waiting 6 Months and Over<sup>6</sup> - September 2006**

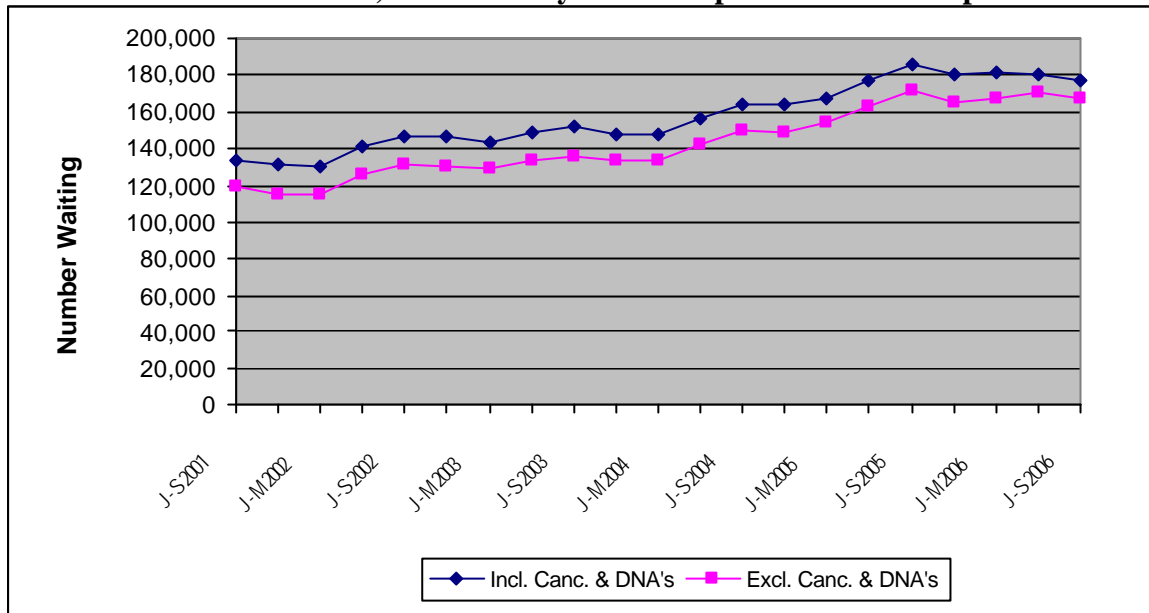
Waiting for:	Quarter Ending September 06	Change compared with end of previous quarter	Change compared with end same quarter - previous year
Excluding Cancellations and Deferrals	56,546	-7,060	-10,970
Cancellations and Deferrals	1,382	-4,108	-7,334
<b>Total Waiting</b>	<b>57,928</b>	<b>-11,168</b>	<b>-18,304</b>

Source: CH3

<sup>6</sup> Refer to Technical Notes – points 3, 16 & 17.

Figure 4 shows five yearly trends in the number of outpatients waiting for a first appointment. Figure 5 shows the same trends information for patients waiting 6 months and over for a first outpatient appointment.

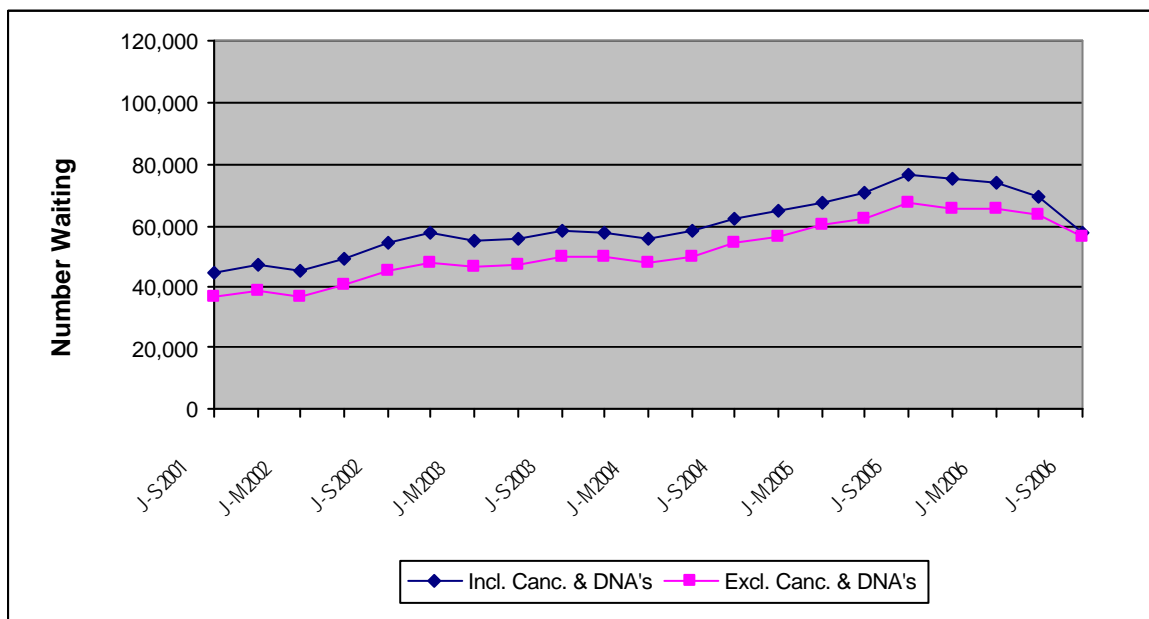
**Figure 4 Outpatients Waiting for a First Appointment (including and excluding cancellations and deferrals) – Five Yearly Trends September 2001 – September 2006<sup>5</sup>**



Source: CH3 Parts 1 & 2.

<sup>5</sup> Refer to Technical Notes – points 16 & 17.

**Figure 5 Patients waiting 6 months and over - Five Yearly Trends September 2001 – September 2006<sup>6</sup>**



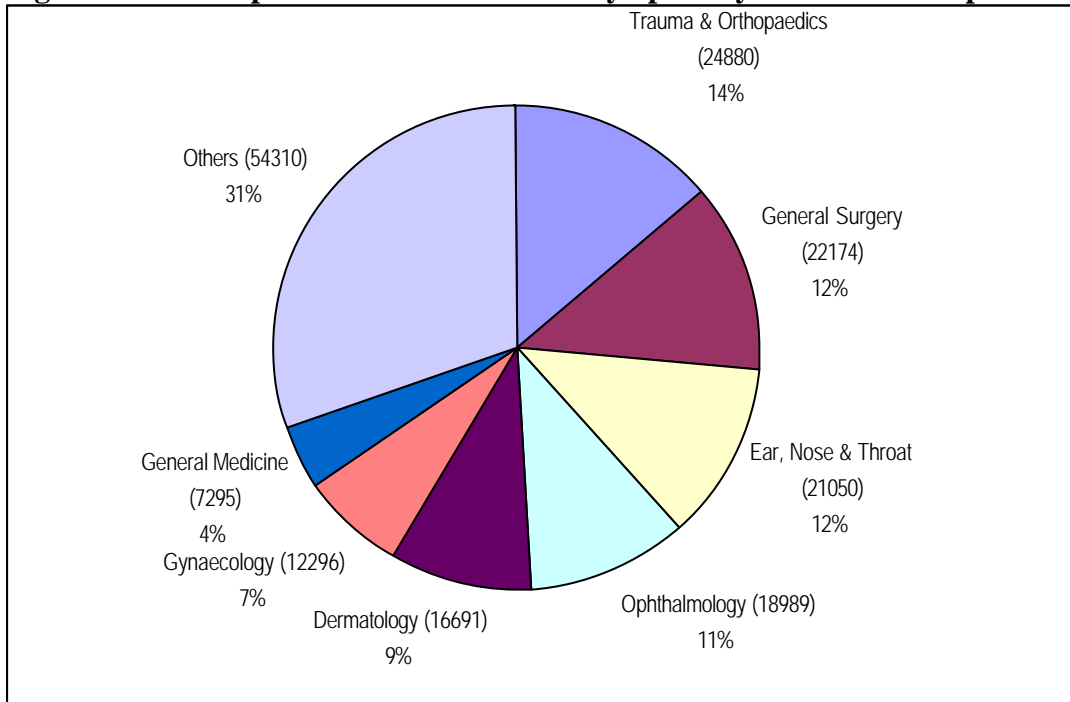
Source: CH3 Parts 1 & 2

<sup>6</sup> Refer to Technical Notes – points 3, 16 & 17

## Outpatients Waiting by Specialty

The majority of those waiting (69%) were within seven specialties: Trauma and Orthopaedic Surgery (T&O); General Surgery; Ear, Nose and Throat (ENT); Ophthalmology; Dermatology, Gynaecology (Gynae) and General Medicine (Figure 6a). Figures for patients waiting 6 months and over are shown in Figure 6b. Figures represent the total number waiting for their first outpatient appointment during the September 2006 quarter including those who have cancelled or missed a previous appointment.

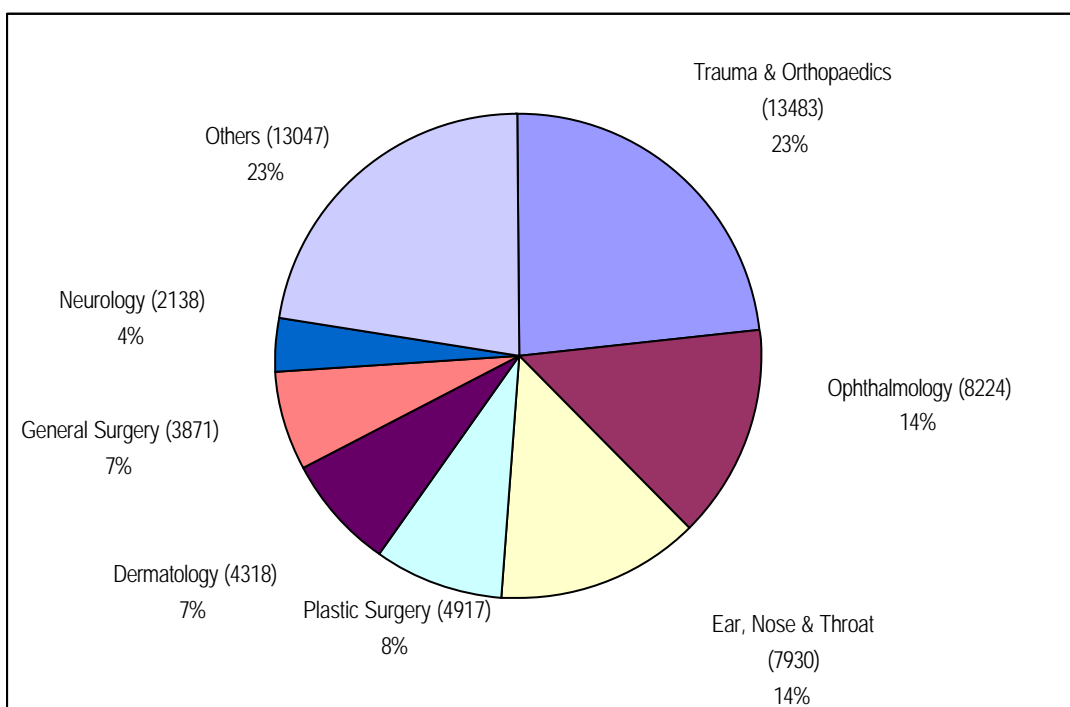
**Figure 6a Outpatients – Total Waiters<sup>7</sup> by Specialty at the end of September 2006**



Source: CH3.

<sup>7</sup> Refer to Technical Notes – points 17

**Figure 6b Outpatients – Patients waiting 6 months and over<sup>8</sup> by Specialty at the end of September 2006**



Source: CH3.

<sup>8</sup> Refer to Technical Notes – point 3 & 17.

## Outpatient Waiting Time by Specialty

Waiting times for outpatients by specialty are shown in Tables 8a and 8b. The proportion of those waiting less than 6 months ranged from 100.0% in the Genito-Urinary Medicine specialty to 24.9% in Plastic Surgery. Overall three fifths (67.4%) of those waiting for treatment were waiting less than 6 months.

**Table 8a Number of Patients Waiting for a First Appointment by Months Waiting and Specialty – September 2006<sup>5</sup>**

Specialty	Patients Waiting for an Appointment by Months Waiting									Total Number of Patients Awaiting Appointment
	0 - 2	3 - 5	6 - 8	9 - 11	12 - 14	15 - 17	18 - 20	21 - 23	24 +	
Trauma & Orthopaedics	7,065	4,332	2,895	1,975	1,591	1,317	993	896	3,816	24,880
General Surgery	12,963	5,340	2,639	759	236	148	47	37	5	22,174
Ear, Nose & Throat	8,056	5,064	2,883	1,192	953	805	597	361	1,139	21,050
Ophthalmology	6,656	4,109	2,987	2,148	1,155	728	408	260	538	18,989
Dermatology	7,917	4,456	2,051	977	532	321	150	117	170	16,691
Gynaecology	7,404	3,335	985	275	146	74	37	21	19	12,296
General Medicine	4,251	1,582	666	237	112	97	84	63	203	7,295
Plastic Surgery	865	761	470	368	363	333	225	212	2,946	6,543
Neurology	1,860	1,169	815	504	300	226	154	90	49	5,167
Cardiology	2,494	1,153	536	256	114	75	26	3	15	4,672
Paediatrics	2,335	1,042	347	91	42	9	8	6	18	3,898
Urology	1,817	953	424	245	153	77	16	8	11	3,704
Rheumatology	1,527	908	437	191	136	104	61	17	64	3,445
Oral Surgery	1,397	723	334	217	163	116	84	48	146	3,228
Restorative Dentistry	646	672	537	412	340	196	46	13	57	2,919
Mental Illness	1,612	504	100	8	1	1	0	0	0	2,226
Pain Management	641	503	258	160	72	66	48	35	276	2,059
Genito-Urinary Medicine	1,984	0	0	0	0	0	0	0	0	1,984
Paediatric Surgery	551	411	203	117	17	0	3	0	0	1,302
Gastroenterology	769	332	59	66	48	11	2	0	0	1,287
Other	7,045	2,553	1,090	595	242	211	75	14	51	11,876
<b>All Specialties</b>	<b>79,855</b>	<b>39,902</b>	<b>20,716</b>	<b>10,793</b>	<b>6,716</b>	<b>4,915</b>	<b>3,064</b>	<b>2,201</b>	<b>9,523</b>	<b>177,685</b>

Source: CH3

<sup>5</sup> Refer to Technical Notes – points 16 & 17.

**Table 8b Percentage of Patients Waiting for a First Appointment by Months Waiting and Specialty – September 2006<sup>5</sup>**

Specialty	Patients Waiting for an Appointment by Months Waiting								
	0 - 2	3 - 5	6 - 8	9 - 11	12 - 14	15 - 17	18 - 20	21 - 23	24+
Trauma & Orthopaedics	28.4%	17.4%	11.6%	7.9%	6.4%	5.3%	4.0%	3.6%	15.3%
General Surgery	58.5%	24.1%	11.9%	3.4%	1.1%	0.7%	0.2%	0.2%	0.0%
Ear, Nose & Throat	38.3%	24.1%	13.7%	5.7%	4.5%	3.8%	2.8%	1.7%	5.4%
Ophthalmology	35.1%	21.6%	15.7%	11.3%	6.1%	3.8%	2.1%	1.4%	2.8%
Dermatology	47.4%	26.7%	12.3%	5.9%	3.2%	1.9%	0.9%	0.7%	1.0%
Gynaecology	60.2%	27.1%	8.0%	2.2%	1.2%	0.6%	0.3%	0.2%	0.2%
General Medicine	58.3%	21.7%	9.1%	3.2%	1.5%	1.3%	1.2%	0.9%	2.8%
Plastic Surgery	13.2%	11.6%	7.2%	5.6%	5.5%	5.1%	3.4%	3.2%	45.0%
Neurology	36.0%	22.6%	15.8%	9.8%	5.8%	4.4%	3.0%	1.7%	0.9%
Cardiology	53.4%	24.7%	11.5%	5.5%	2.4%	1.6%	0.6%	0.1%	0.3%
Paediatrics	59.9%	26.7%	8.9%	2.3%	1.1%	0.2%	0.2%	0.2%	0.5%
Urology	49.1%	25.7%	11.4%	6.6%	4.1%	2.1%	0.4%	0.2%	0.3%
Rheumatology	44.3%	26.4%	12.7%	5.5%	3.9%	3.0%	1.8%	0.5%	1.9%
Oral Surgery	43.3%	22.4%	10.3%	6.7%	5.0%	3.6%	2.6%	1.5%	4.5%
Restorative Dentistry	22.1%	23.0%	18.4%	14.1%	11.6%	6.7%	1.6%	0.4%	2.0%
Mental Illness	72.4%	22.6%	4.5%	0.4%	0.0%	0.0%	0.0%	0.0%	0.0%
Pain Management	31.1%	24.4%	12.5%	7.8%	3.5%	3.2%	2.3%	1.7%	13.4%
Genito-Urinary Medicine	100.0%	0.0%	0.0%	0.0%	0.0%	0.0%	0.0%	0.0%	0.0%
Paediatric Surgery	42.3%	31.6%	15.6%	9.0%	1.3%	0.0%	0.2%	0.0%	0.0%
Gastroenterology	59.8%	25.8%	4.6%	5.1%	3.7%	0.9%	0.2%	0.0%	0.0%
Other	59.3%	21.5%	9.2%	5.0%	2.0%	1.8%	0.6%	0.1%	0.4%
<b>All Specialties</b>	<b>44.9%</b>	<b>22.5%</b>	<b>11.7%</b>	<b>6.1%</b>	<b>3.8%</b>	<b>2.8%</b>	<b>1.7%</b>	<b>1.2%</b>	<b>5.4%</b>

Source: CH3.

<sup>5</sup> Refer to Technical Notes – points 16 & 17.

## Outpatient Waiting Times by Provider Trust

Waiting times for outpatients by Trust are shown in Table 9.

**Table 9 Number of Patients Waiting for a First Outpatient Appointment by Provider Trust and Months Waiting – September 2006<sup>5</sup>**

Provider Trust	Patients Waiting for an Appointment by Months Waiting									Total Number
	0 - 2	3 - 5	6 - 8	9 - 11	12 - 14	15 - 17	18 - 20	21 - 23	24 +	
Altnagelvin Group	9,925	4,695	1,965	533	235	60	13	9	17	17,452
Armagh & Dungannon	1,097	384	138	25	17	35	26	11	41	1,774
Belfast City Hospital	7,743	2,655	1,363	836	284	147	98	54	18	13,198
Causeway	2,595	1,192	416	25	15	8	13	2	0	4,266
Craigavon & Banbridge	321	189	30	16	9	3	7	6	18	599
Craigavon Area Hospital Group	7,316	4,278	2,225	845	452	339	171	70	119	15,815
Down Lisburn	3,563	1,360	557	239	159	105	60	64	18	6,125
Foyle Community	293	150	44	15	15	7	6	1	13	544
Green Park Healthcare	4,406	2,871	1,820	1,242	985	818	641	445	2,344	15,572
Homefirst Community	488	93	15	0	0	0	0	0	0	596
Mater Infirmorum Hospital	3,257	1,962	1,002	653	139	10	13	1	0	7,037
North and West Belfast	17	2	0	0	0	0	0	0	0	19
Newry & Mourne	3,295	1,614	693	205	95	70	21	20	0	6,013
Royal Group of Hospitals	15,562	8,896	5,363	3,459	2,540	1,932	1,078	846	2,428	42,104
South and East Belfast	245	63	8	0	0	0	0	0	0	316
Sperrin Lakeland	2,850	1,051	278	47	7	1	0	0	0	4,234
Ulster Community & Hospitals	9,331	5,381	2,942	1,301	781	622	370	353	3,309	24,390
United Hospitals Group	7,551	3,066	1,857	1,352	983	758	547	319	1,198	17,631
<b>Total</b>	<b>79,855</b>	<b>39,902</b>	<b>20,716</b>	<b>10,793</b>	<b>6,716</b>	<b>4,915</b>	<b>3,064</b>	<b>2,201</b>	<b>9,523</b>	<b>177,685</b>

Source: CH3

<sup>5</sup> Refer to Technical Notes – points 16 & 17.

## Outpatient Waiting Time by Programme of Care

Waiting times for a first outpatient appointment by programme of care are shown in Table 10. The vast majority (97.0%) of patients were awaiting their first outpatient appointment in the Acute Services Programme of Care.

**Table 10** Number of Patients Waiting for a First Appointment by Months Waiting and Programme of Care – September 2006<sup>5</sup>

Programme of Care	Patients Waiting for an Appointment by Months Waiting									Total Number
	0 - 2	3 - 5	6 - 8	9 - 11	12 - 14	15 - 17	18 - 20	21 - 23	24 +	
Acute Services	76,388	38,539	20,420	10,721	6,695	4,907	3,057	2,200	9,500	172,427
Elderly Care	1,337	435	86	17	1	0	1	0	10	1,887
Mental Health	2,072	902	206	55	20	8	6	1	13	3,283
Learning Disability	58	26	4	0	0	0	0	0	0	88
<b>All POCs</b>	<b>79,855</b>	<b>39,902</b>	<b>20,716</b>	<b>10,793</b>	<b>6,716</b>	<b>4,915</b>	<b>3,064</b>	<b>2,201</b>	<b>9,523</b>	<b>177,685</b>

Source: CH3

<sup>5</sup> Refer to Technical Notes – points 16 & 17.

## Outpatient Completed Waits

Waiting times for completed outpatient waits are shown in Table 11. During the September 2006 quarter a total of 90,875 outpatients attended their first appointment without having cancelled or missed a previous appointment. 63.9% of patients attended their first outpatient appointment within 3 months of being placed on the waiting list and 80.0% had their first outpatient appointment within 6 months.

**Table 11 Completed Outpatient Waits for First Appointment<sup>9</sup>**

Quarter	Time Waiting in Months									Total
	0 - 2	3 - 5	6 - 8	9 - 11	12 - 14	15 - 17	18 - 20	21 - 23	24 +	
A - J 2003	72.1%	15.8%	5.8%	2.8%	1.4%	0.8%	0.4%	0.3%	0.7%	84,963
J - S 2003	69.5%	18.4%	5.7%	2.5%	1.5%	0.7%	0.5%	0.3%	0.9%	80,128
O - D 2003	69.6%	17.9%	5.6%	2.6%	1.7%	0.8%	0.5%	0.4%	0.9%	88,711
J - D 2003	<b>70.3%</b>	<b>17.3%</b>	<b>5.7%</b>	<b>2.7%</b>	<b>1.5%</b>	<b>0.8%</b>	<b>0.5%</b>	<b>0.3%</b>	<b>0.9%</b>	<b>338,856</b>
J - M 2004	69.8%	17.1%	5.2%	2.9%	1.7%	1.3%	0.6%	0.4%	1.1%	91,496
A - J 2004	71.8%	15.9%	5.5%	2.7%	1.7%	0.9%	0.6%	0.3%	0.6%	88,213
J - S 2004	70.6%	17.9%	5.4%	2.5%	1.4%	0.8%	0.4%	0.3%	0.6%	84,455
O - D 2004	68.9%	17.3%	7.0%	2.6%	1.4%	0.9%	0.7%	0.4%	0.7%	91,915
J - D 2004	<b>70.3%</b>	<b>17.1%</b>	<b>5.8%</b>	<b>2.7%</b>	<b>1.6%</b>	<b>1.0%</b>	<b>0.6%</b>	<b>0.3%</b>	<b>0.8%</b>	<b>356,079</b>
J - M 2005	68.4%	16.4%	7.0%	3.3%	1.7%	1.3%	0.6%	0.4%	0.9%	86,944
A - J 2005	70.1%	15.6%	6.9%	2.9%	1.9%	0.7%	0.5%	0.3%	1.0%	91,489
J - S 2005	70.8%	16.0%	5.7%	2.9%	1.7%	1.1%	0.5%	0.4%	0.9%	82,721
O - D 2005	67.7%	15.9%	7.5%	3.1%	1.9%	1.1%	0.9%	0.6%	1.3%	91,969
J - D 2005	<b>69.2%</b>	<b>16.0%</b>	<b>6.8%</b>	<b>3.1%</b>	<b>1.8%</b>	<b>1.0%</b>	<b>0.6%</b>	<b>0.4%</b>	<b>1.0%</b>	<b>353,123</b>
J - M 2006	68.0%	15.6%	7.6%	3.7%	1.4%	1.1%	1.0%	0.6%	1.1%	91,695
A - J 2006	68.3%	15.0%	7.2%	4.0%	1.7%	0.9%	0.9%	0.8%	1.3%	90,664
J - S 2006	63.9%	16.1%	7.3%	4.9%	2.7%	1.7%	1.2%	0.8%	1.5%	90,875

Source: CH4 Part 1

<sup>9</sup> Refer to Technical Notes – points 18 & 19.

## Technical Notes

1. The sources for the data contained in this release are the Information Returns CH1, CH2, CH3 and CH4. These returns collect information from Hospital Trusts on a quarterly basis.
2. Trust based information (CH1, CH2, CH3 and CH4) returns include all patients living outside Northern Ireland and all privately funded patients waiting for treatment in Health Service hospitals. This Trust based information falls within the scope of National Statistics.
3. Patients waiting 6 months and over include all patients in the following time bands: 6-8, 9-11, 12-14, 15-17, 18-20, 21-23 and 24+ months.
4. Waiting time relates to the number of completed months a patient has been waiting (or in the case for completed waits, how long a patient had waited) for either their first outpatient appointment or for inpatient admission. For example, a patient waiting 11 months and 30 days would be included in the 9-11 month category and a patient waiting 12 months and 01 day would be included in the 12-14 month category.
5. Inpatient waiting list data comprises the number of patients waiting for ordinary admission to hospital and the number of patients waiting for day case treatment.
6. Ordinary admissions include both (a) patients admitted electively with the expectation that they will remain in hospital for at least one night, and (b) non-elective admissions (e.g. emergency admissions). A patient who is admitted with either of the above intentions, but who leaves hospital for any reason without staying overnight, is still counted as an ordinary admission. Day cases are not included.
7. Day Cases are patients admitted electively during the course of a day with the intention of receiving care who do not require the use of a hospital bed overnight and who return home as scheduled. If this original intention is not fulfilled and the patient stays overnight, such a patient is counted as an ordinary admission.
8. The waiting list inpatient figures presented include people waiting to be admitted as inpatients either as day cases or ordinary admissions. They do not include:
  - Patients admitted as emergency cases;
  - Outpatients;
  - Patients undergoing a planned programme of treatment e.g. a series of admissions for chemotherapy;
  - Maternity (specialties 510 and 520);
  - Patients already in hospitals but included on other waiting lists;
  - Patients who are temporarily suspended from waiting lists.
9. Waiting time begins from the date the clinician decided to admit the patient. Patients subsequently offered a date but unable to attend have their waiting times calculated from the most recent date offered. These are known as self-deferred cases and are included in the total number waiting.
10. It has recently been discovered that a number of Trusts have been managing patients waiting for coronary angiography procedures incorrectly. These had been managed as a diagnostic procedure when in effect they are daycases and should be managed as such. All patients waiting for this procedure will be included in the waiting lists from this quarter forward. It has not been possible to revise the figures for previous quarters.

11. Where the symbol '<0.1%' appears (Table 3b), this refers to a figure of less than 0.05% which would otherwise appear as 0.0% in the table due to rounding.
12. Waiting times for completed inpatient waits relate to the entire time period between the initial decision to admit and the date of treatment. Figures for completed waits do not include activity commissioned by the HPSS in Northern Ireland that has been carried out by the Independent Sector.
13. Outpatients are defined as patients still waiting for their first outpatient appointment at the end of the quarter. An outpatient appointment is to enable a patient to see a consultant, a member of his firm or locum for such a member, in respect of one referral.
14. Outpatient waiting list figures presented do not include maternity specialties 510 and 520.
15. The number of people awaiting an initial outpatient appointment at 30 June 2006 has been revised from 180,363 to 180,384. This is due to amendments received from South & East Belfast and Homefirst Community HSS Trusts.
16. Following a recent revision in policy, cleared by the Health Minister, patients who either cancel or fail to attend an outpatient appointment have their waiting time reset to either the date on which the appointment was cancelled or the date on which they did not attend the appointment. Outpatient waiting list figures (Departmental Information Return CH3) for September have been updated to reflect this policy change. As a result of this update the number of outpatients waiting under 6 months, who had previously cancelled or failed to attend an appointment, has increased by 4,256 from the June quarter. In addition, the number of outpatients waiting over 6 months, who had previously cancelled or failed to attend an appointment, has decreased by 4,108 from the June 06 quarter.
17. The Royal Group of Hospitals HSS Trust have provided information for dentistry specialties (140 oral surgery, 141 restorative dentistry, 142 paediatric dentistry, 143 orthodontics & 450 dental medicine specialties) from a new reporting system this quarter. This reporting system will also be used to provide dentistry waiting list figures for subsequent quarters.
18. Waiting times for completed outpatient waits relate to the entire time period between the initial referral and the date the patient attended their first outpatient appointment. Figures for completed waits do not include activity commissioned by the HPSS in Northern Ireland that has been carried out by the Independent Sector.
19. Due to reasons beyond the control of the Trust, United Hospitals HSS Trust has been unable to produce CH4 data for all quarters between March 2001 and September 2006. This Trust has provided estimated totals for these quarters and estimates for each time band have been calculated. These new estimates for the missing data for the United Group of Hospitals have been included in the data shown in Table 9. When CH4 data becomes available these estimates will be recast.
20. Department of Health, Social Services and Public Safety policy is to publish revised figures with subsequent statistical releases unless it is decided that the magnitude of the change merits earlier notification.
21. Figures relating to the quarter ending 31<sup>st</sup> December 2006 will be released on Thursday, 1<sup>st</sup> March 2007.
22. For general enquiries about National Statistics, contact the National Statistics Public Service on

minicom: 01633 812399  
E-mail: [info@statistics.gov.uk](mailto:info@statistics.gov.uk)  
Fax: 01633 652747  
Letters: room DG/18, Drummond Gate,  
LONDON SW1V 2QQ

You can also find National Statistics on the internet – Go to <http://www.statistics.gov.uk/>

### **Additional Information**

Further information on waiting lists in Northern Ireland is available from:

Office Information Manager  
Hospital Information Branch  
Department of Health, Social Services and Public Safety  
Annexe 2  
Castle Buildings  
Stormont  
BT4 3SQ

E-mail: [rib@dhsspsni.gov.uk](mailto:rib@dhsspsni.gov.uk)

Internet address:

[http://www.dhsspsni.gov.uk/stats-hospital\\_community\\_statistics.htm#waitinglists](http://www.dhsspsni.gov.uk/stats-hospital_community_statistics.htm#waitinglists)