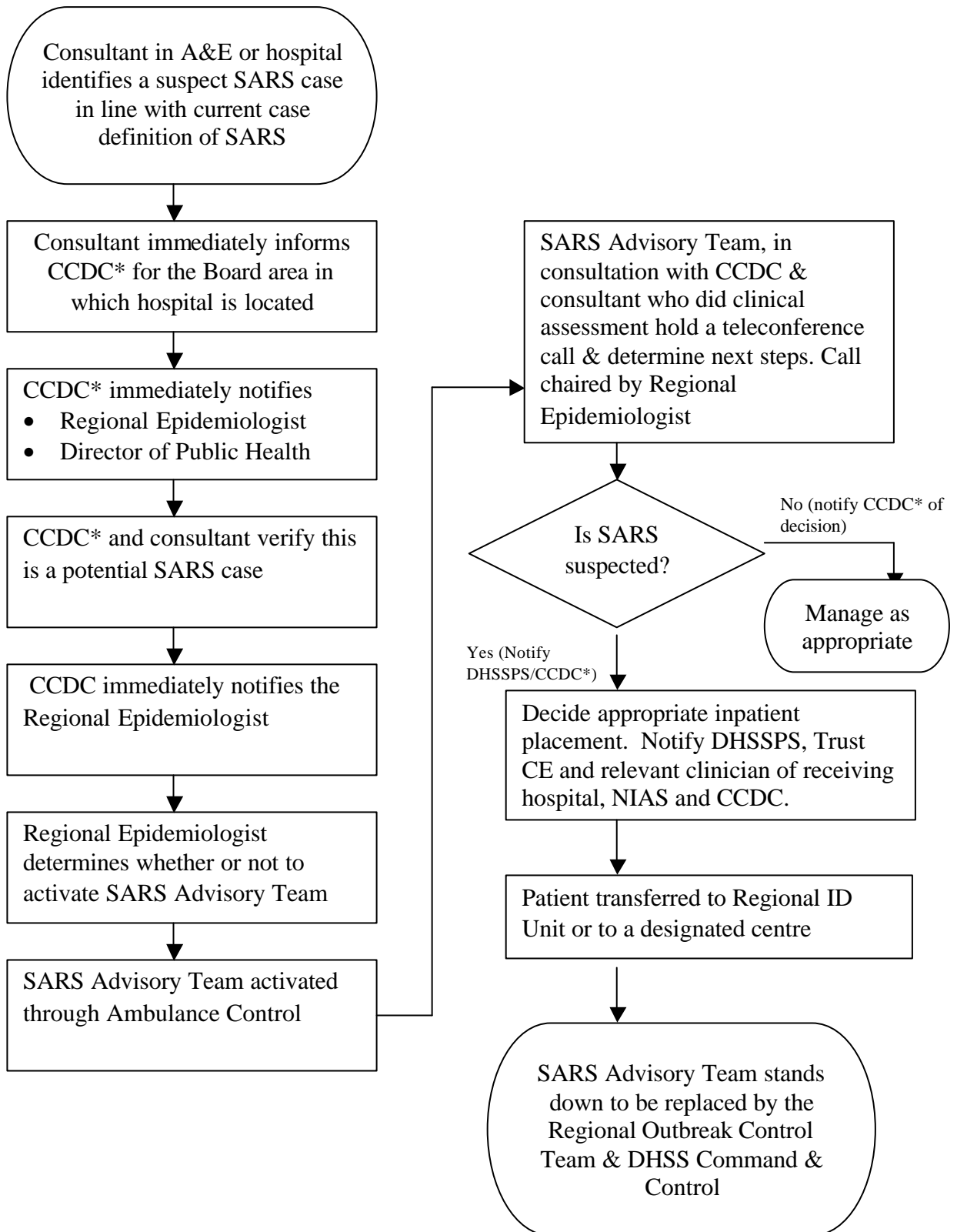


## Appendix 8 : Pathway for Activating the SARS Advisory Team



### SARS Advisory Team to be activated through Ambulance Control

- Regional Epidemiologist
- Consultant in Infectious Disease (Rota at RVH)

\* Out of hours, a Consultant in Public Health Medicine (CPHM) may be first on-call. **In this case the CPHM would contact the regional CCDC on call for further advice. Management responsibilities remain with the local HSSB**