

# Statistics Release



Department of  
**Health, Social Services  
and Public Safety**

An Roinn  
**Sláinte, Seirbhísí Sóisialta  
agus Sábháilteachta Poiblí**

[www.dhsspsni.gov.uk](http://www.dhsspsni.gov.uk)

06 September 2007

## Northern Ireland Waiting Lists – June 2007

This statistics release gives details of the number of people waiting for inpatient or outpatient treatment at hospitals in Northern Ireland at the end of June 2007, the most recent quarter for which figures are available.

### Inpatients

#### Headline Totals – Table 1

The total number of patients waiting to be admitted to hospitals in Northern Ireland at the end of June 2007 stood at 36,144.

Over the quarter, comparing the end of June 2007 with the end of March 2007 (37,978), the total number waiting has decreased by 1,834 (-4.8%).

Over the year, comparing the end of June 2007 with the end of June 2006 (40,299), the total number waiting decreased by 4,155 (-10.3%).

**Table 1: Quarterly Inpatient Waiting Lists<sup>1</sup> – June 2007**

Waiting for:	Quarter Ending June 2007	Change compared with end of previous quarter	Change compared with end same quarter – previous year
Ordinary Admissions	12,308	-1,106	-2,721
Day case Admissions	23,836	-728	-1,434
<b>Total Waiting</b>	<b>36,144</b>	<b>-1,834</b>	<b>-4,155</b>

Source: CHI

<sup>1</sup> Refer to Technical Notes – point 3.

**Detailed notes and definitions are provided in the Technical Notes.**



### A National Statistics Publication

National Statistics are produced to high professional standards set out in the National Statistics Code of Practice. They undergo regular quality assurance reviews to ensure that they meet customer needs. They are produced free from any political interference.

## Numbers Waiting for Ordinary Admission and Day Case Treatment

People on the inpatient waiting list in Northern Ireland can be waiting for admission to hospital as day cases or as ordinary admissions.

Of the 36,144 people waiting for admission to hospital at the end of June 2007, 12,308 (34.1%) were waiting for ordinary admission and 23,836 (65.9%) were waiting for day case admission (Table 1).

Since the end of March 2007, the number of cases waiting for ordinary admission has decreased by 1106 (-8.2%) and the number waiting for day case admission has decreased by 728 (-3.0%).

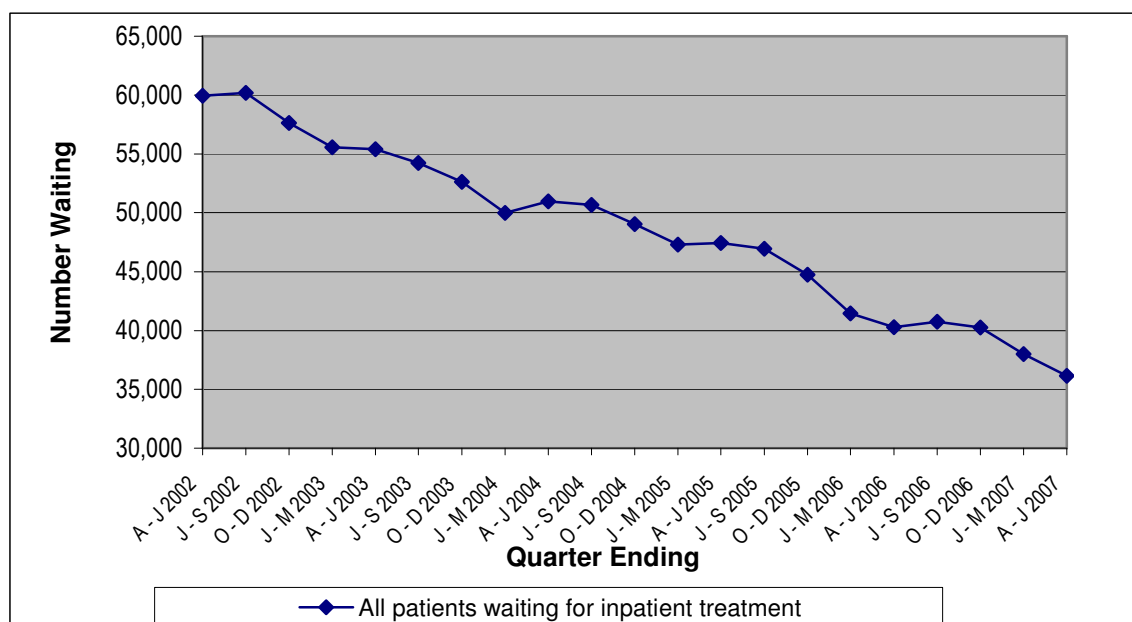
In comparison with June 2006, the number of cases waiting for ordinary admission has decreased by 2,721 (-18.1%) and the number waiting for day case admission has decreased by 1,434 (-5.7%).

The end of June 2007 total of 36,144 patients on the inpatient waiting list represents a decrease of 24,046 (40.0%) on the peak waiting list figure of 60,190 (end September 2002).

## Trends

The total number of people waiting for inpatient treatment peaked in September 2002. There has been an overall downward trend since this peak.

**Figure 1 Total Quarterly Waiting Lists – Five yearly trends June 2002 – June 2007**



Source: CHI

## Patients Waiting 6 Months and Over <sup>1</sup> - June 2007

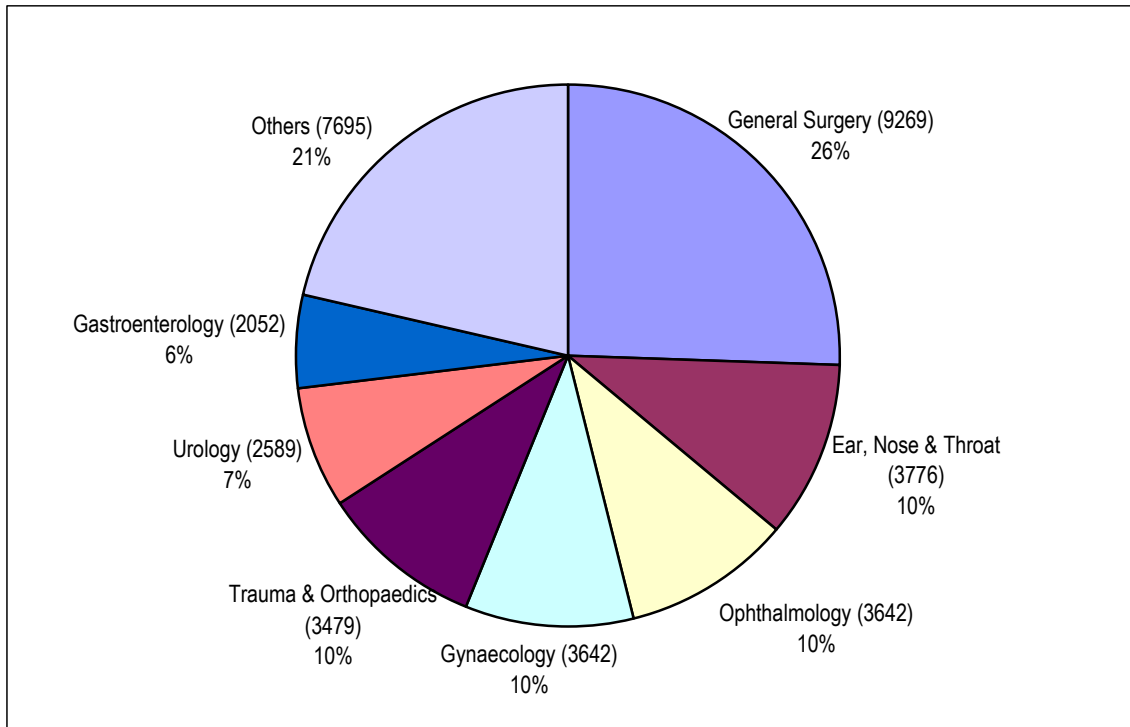
At the end of June 2007, there were no patients waiting 6 months and over for inpatient treatment.

<sup>1</sup> Refer to Technical Notes – point 3.

## Inpatients Waiting by Specialty

The overwhelming majority of those waiting (78.7%) were within seven specialties: General Surgery; Ear, Nose and Throat (ENT); Ophthalmology; Gynaecology (Gynae); Trauma and Orthopaedic Surgery (T&O); Urology and Gastroenterology (Figure 2).

**Figure 2** Inpatients - Total Waiters by Specialty at the end of June 2007



Source: CH1

## Inpatient Waiting Time by Specialty

Waiting times for inpatients by specialty are shown in Tables 2a and 2b. Overall 77.9% of those waiting for admission were waiting less than 3 months. More than 99% of patients were waiting for treatment in the Acute Services Programme of Care.

**Table 2a Number of Patients Waiting for Admission by Months Waiting and Specialty – June 2007**

Specialty	Patients Waiting for Admission by Months Waiting			Total Number of Patients Awaiting Admission
	0 - 2	3 - 5	6+	
General Surgery	7,437	1,832	0	9,269
Ear, Nose & Throat	2,773	1,003	0	3,776
Ophthalmology	2,766	876	0	3,642
Gynaecology	2,803	839	0	3,642
Trauma & Orthopaedics	2,421	1,058	0	3,479
Urology	2,011	578	0	2,589
Gastroenterology	1,670	382	0	2,052
General Medicine	1,669	163	0	1,832
Cardiology	996	386	0	1,382
Pain Management	554	166	0	720
Plastic Surgery	505	117	0	622
Oral Surgery	407	86	0	493
Paediatric Surgery	359	120	0	479
Rheumatology	326	121	0	447
Dermatology	305	77	0	382
General Practice (Other)	320	7	0	327
Cardiac Surgery	184	71	0	255
Neurology	72	36	0	108
Paediatric Dentistry	84	12	0	96
Neurosurgery	62	19	0	81
Other	432	39	0	471
<b>All Specialties</b>	<b>28,156</b>	<b>7,988</b>	<b>0</b>	<b>36,144</b>

Source: CH1

**Table 2b Percentage of Patients Waiting for Admission by Months Waiting and Specialty – June 2007**

Specialty	Patients Waiting for Admission by Months Waiting		
	0 - 2	3 - 5	6+
General Surgery	80.2%	19.8%	0.0%
Ear, Nose & Throat	73.4%	26.6%	0.0%
Ophthalmology	75.9%	24.1%	0.0%
Gynaecology	77.0%	23.0%	0.0%
Trauma & Orthopaedics	69.6%	30.4%	0.0%
Urology	77.7%	22.3%	0.0%
Gastroenterology	81.4%	18.6%	0.0%
General Medicine	91.1%	8.9%	0.0%
Cardiology	72.1%	27.9%	0.0%
Pain Management	76.9%	23.1%	0.0%
Plastic Surgery	81.2%	18.8%	0.0%
Oral Surgery	82.6%	17.4%	0.0%
Paediatric Surgery	74.9%	25.1%	0.0%
Rheumatology	72.9%	27.1%	0.0%
Dermatology	79.8%	20.2%	0.0%
General Practice (Other)	97.9%	2.1%	0.0%
Cardiac Surgery	72.2%	27.8%	0.0%
Neurology	66.7%	33.3%	0.0%
Paediatric Dentistry	87.5%	12.5%	0.0%
Neurosurgery	76.5%	23.5%	0.0%
Other	91.7%	8.3%	0.0%
<b>All Specialties</b>	<b>77.9%</b>	<b>22.1%</b>	<b>0.0%</b>

Source: CH1

### Inpatient Waiting Times by Provider Trust

Waiting times for inpatients by Trust are shown in Table 3.

**Table 3 Number of Patients Waiting for Admission by Provider Trust<sup>2</sup> and by Months Waiting – June 2007**

Provider Trust	Patients Waiting for Admission by Months Waiting			Total Number of Patients Waiting
	0 - 2	3 - 5	6+	
Belfast	11,106	3,107	0	14,213
Northern	4,399	1,216	0	5,615
South Eastern	3,827	800	0	4,627
Southern	4,430	1,482	0	5,912
Western	4,394	1,383	0	5,777
<b>Total</b>	<b>28,156</b>	<b>7,988</b>	<b>0</b>	<b>36,144</b>

Source: CH1

<sup>2</sup> Refer to Technical Notes – point 10

## Completed Inpatient Waits – June 2007

Waiting times for completed inpatient waits, for patients treated within Health Service hospitals in Northern Ireland are shown in Table 4. A total of 40,757 inpatients were admitted to Health Service hospitals (excluding those who had previously refused an offer of admission) during the June 2007 quarter. 70.9% of patients received their treatment within 3 months of being placed on the waiting list and 96.3% received their treatment within 6 months. Including patients who had been medically deferred, or did not attend a previously arranged admission date, the total number of patients admitted to Health Service hospitals in Northern Ireland during the quarter was 46,140.

**Table 4** Completed Inpatient Waits<sup>3</sup>

Quarter	Time Waiting in Months					Total Number of Completed Inpatient Waits	
	0 - 2	3 - 5	6 - 8	9 - 11	12+	Excluding patients who have medically deferred or did not attend on a previously arranged admission date	Including patients who have medically deferred or did not attend on a previously arranged admission date
J - M 2004	74.4%	11.6%	4.8%	3.5%	5.6%	40,924	44,111
A - J 2004	74.6%	11.4%	5.9%	3.1%	4.9%	38,507	41,211
J - S 2004	73.1%	13.1%	5.4%	3.7%	4.6%	37,166	40,111
O - D 2004	73.4%	12.3%	5.5%	3.7%	5.1%	41,330	44,211
<b>J - D 2004</b>	<b>73.9%</b>	<b>12.1%</b>	<b>5.4%</b>	<b>3.5%</b>	<b>5.1%</b>	<b>157,927</b>	<b>169,811</b>
J - M 2005	72.9%	12.9%	4.8%	3.9%	5.5%	39,248	42,511
A - J 2005	74.1%	12.5%	6.2%	3.1%	4.2%	41,183	44,411
J - S 2005	72.0%	12.9%	5.4%	3.8%	5.8%	37,094	40,411
O - D 2005	72.7%	11.6%	6.1%	5.0%	4.7%	40,360	44,611
<b>J - D 2005</b>	<b>72.9%</b>	<b>12.5%</b>	<b>5.6%</b>	<b>3.9%</b>	<b>5.0%</b>	<b>157,885</b>	<b>172,011</b>
J - M 2006	70.2%	13.7%	6.9%	5.8%	3.5%	41,111	45,811
A - J 2006	71.0%	14.8%	8.2%	4.8%	1.2%	39,308	43,511
J - S 2006	69.6%	16.4%	8.7%	4.4%	0.9%	36,752	41,011
O - D 2006	70.8%	17.7%	9.5%	1.4%	0.5%	39,856	44,911
<b>J - D 2006</b>	<b>70.4%</b>	<b>15.6%</b>	<b>8.3%</b>	<b>4.1%</b>	<b>1.6%</b>	<b>157,027</b>	<b>175,311</b>
J - M 2007	70.5%	22.0%	6.6%	0.6%	0.3%	41,079	46,611
A - J 2007	70.9%	25.4%	3.2%	0.2%	0.2%	40,757	46,140

Source: CH2

<sup>3</sup> Refer to Technical Notes – points 11 & 12.

## Completed Inpatient Waits including Independent Sector Activity – June 2007

During the June 2007 quarter, a number of patients received inpatient treatment commissioned by the Health Service within the Independent Sector. Estimates of the number of patients admitted for inpatient treatment within the Independent Sector have been provided by the commissioning Trust.

It is estimated that approximately 2,148 Health Service patients were treated within the Independent Sector during the quarter ending June 2007. When this number is combined with that for inpatients admitted to Health Service hospitals during the quarter, it is estimated that approximately 48,288 inpatients were admitted to hospital in Northern Ireland for treatment commissioned by the Health Service.

**Table 5 Completed Inpatient Waits by Trust including Independent Sector Activity<sup>4</sup>**

<b>Provider Trust</b>	<b>Number of Completed Inpatient Waits within Health Service Hospitals</b>	<b>Number of Completed Inpatient Waits in Independent Sector</b>	<b>Total Number of Completed Inpatient Waits Commissioned by Health Service</b>
Belfast	20,466	905	21,371
Northern	5,930	146	6,076
South Eastern	6,768	233	7,001
Southern	6,101	683	6,784
Western	6,875	181	7,056
<b>Total Treated</b>	<b>46,140</b>	<b>2,148</b>	<b>48,288</b>

Source: Health and Social Service Trusts

<sup>4</sup> Refer to Technical Notes – points 10, 11 & 13

# Outpatients

## Headline Totals - Table 6

The number of patients waiting for a first outpatient appointment (including cancellations and deferrals) at the end of June 2007 stood at 94,407.

Over the quarter, comparing the end of June 2007 with the end of March 2007 (102,491), the total number has decreased by 8,084 (-7.9%).

Over the year, comparing the end of June 2007 with the end of June 2006 (180,384), the total number waiting decreased by 85,977 (-47.7%).

**Table 6: Quarterly Outpatient Waiting Lists - June 2007**

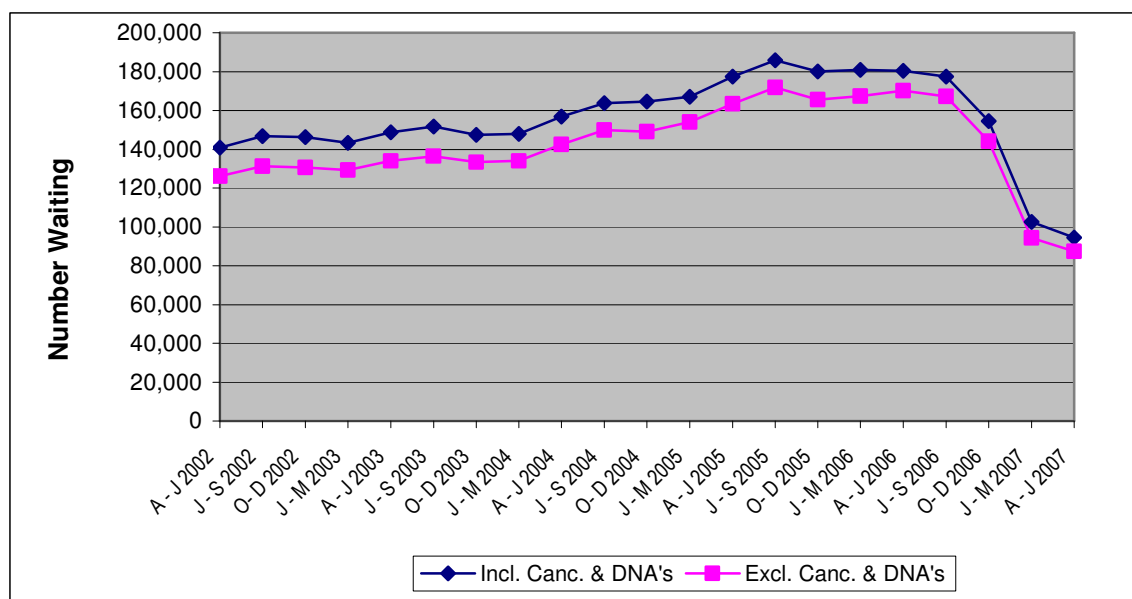
Waiting for:	Quarter Ending June 2007	Change compared with end of previous quarter	Change compared with end same quarter - previous year
Excluding Cancellations and Deferrals	87,355	-6,949	-82,848
Cancellations and Deferrals	7,052	-1,135	-3,129
<b>Total Waiting</b>	<b>94,407</b>	<b>-8,084</b>	<b>-85,977</b>

Source: CH3

## Trends

The total number of people waiting for a first outpatient appointment peaked in September 2005 (185,782). There has been a downward trend since this peak and the outpatient waiting list has decreased in six of the previous seven quarters.

**Figure 3 Outpatients Waiting for a First Appointment (including and excluding cancellations and deferrals) – Five Yearly Trends June 2002 – June 2007**



Source: CH3.

## Patients Waiting 3 Months and Over

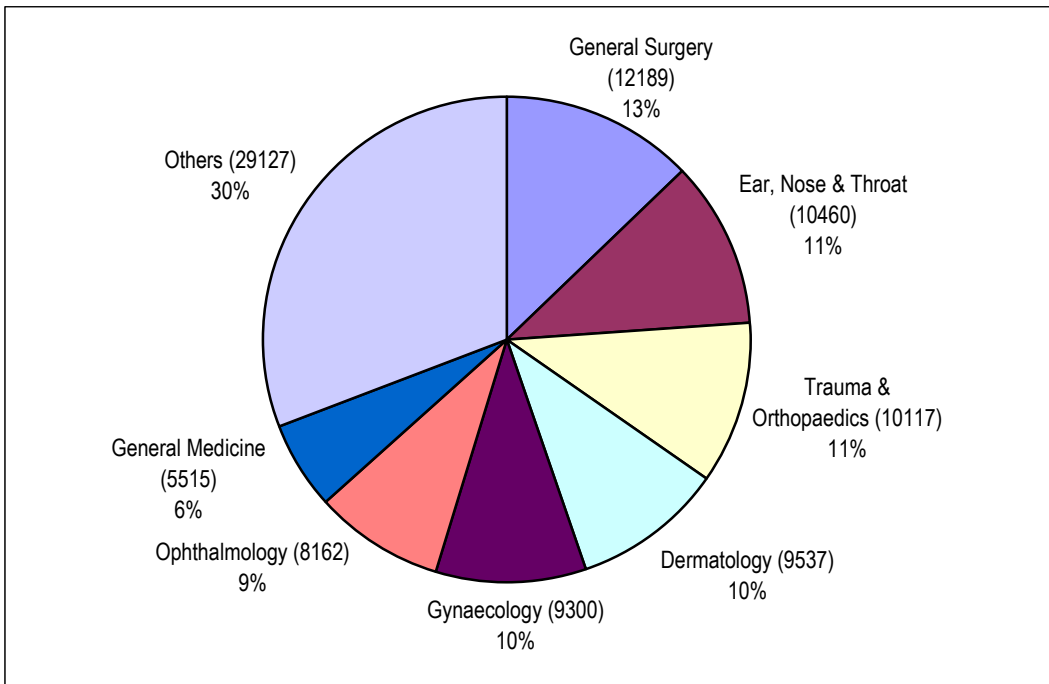
At the end of June 2007, the number of patients waiting three months and over was 16,122, 17.1% of the total waiting. Eight patients were waiting 6 months and over for a first outpatient appointment.

(<sup>5</sup> Refer to technical Notes – point 17).

## Outpatients Waiting by Specialty

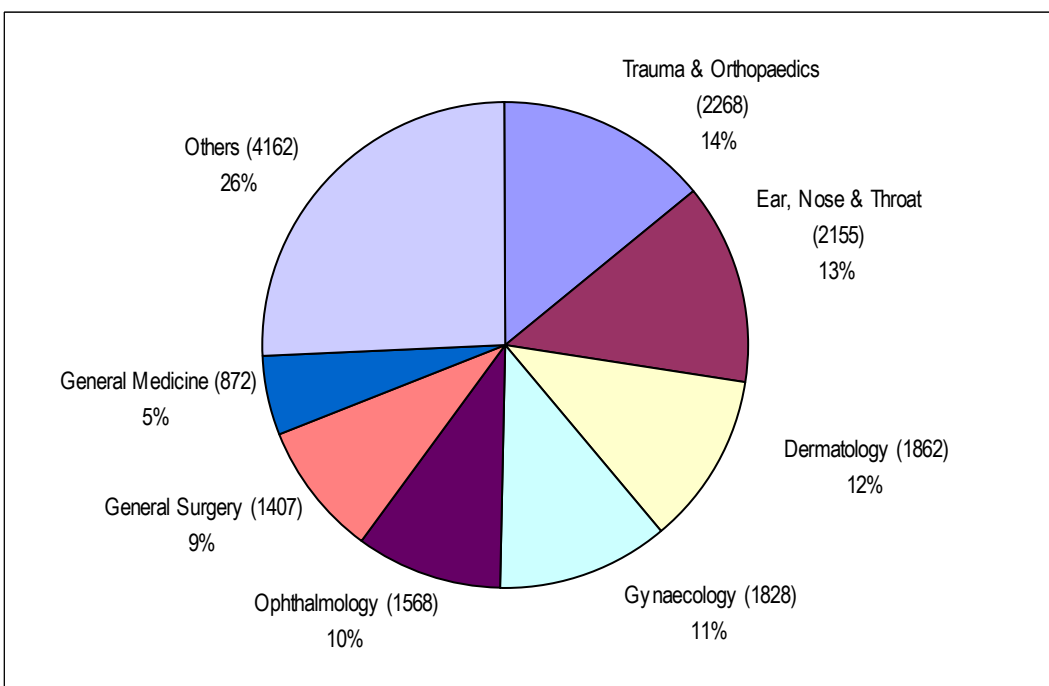
The majority of those waiting (69.1%) were within seven specialties: General Surgery; Ear, Nose and Throat (ENT); Trauma & Orthopaedics; Dermatology; Gynaecology (Gynae); Ophthalmology; and General Medicine (Figure 4a). Figures for patients waiting 3 months and over are shown in Figure 4b. Figures represent the total number waiting for their first outpatient appointment during the June 2007 quarter including those who have cancelled or missed a previous appointment.

**Figure 4a Outpatients – Total Patients Waiting by Specialty at the end of June 2007**



Source: CH3.

**Figure 4b Outpatients – Patients waiting 3 Months and Over<sup>5</sup> by Specialty at the end of June 2007.**



Source: CH3.

<sup>5</sup> Refer to Technical Notes – point 17

## Outpatient Waiting Time by Specialty

Waiting times for outpatients by specialty are shown in Tables 7a and 7b. Overall 82.9% of those waiting for treatment were waiting less than 3 months.

**Table 7a Number of Patients Waiting for a First Appointment by Months Waiting and Specialty – June 2007**

Specialty	Patients Waiting for an Appointment by Months Waiting				Total Number of Patients Waiting
	0 - 2	3 - 5	6 - 8	9+	
General Surgery	10,782	1,407	0	0	12,189
Ear, Nose & Throat	8,305	2,155	0	0	10,460
Trauma & Orthopaedics	7,849	2,268	0	0	10,117
Dermatology	7,675	1,862	0	0	9,537
Gynaecology	7,472	1,828	0	0	9,300
Ophthalmology	6,594	1,568	0	0	8,162
General Medicine	4,643	872	0	0	5,515
Paediatrics	3,032	466	0	0	3,498
Cardiology	2,318	273	0	0	2,591
Rheumatology	1,872	484	8	0	2,364
Mental Illness	1,988	317	0	0	2,305
Neurology	1,840	261	0	0	2,101
Urology	1,604	283	0	0	1,887
Oral Surgery	1,372	409	0	0	1,781
Restorative Dentistry	839	251	0	0	1,090
Pain Management	793	186	0	0	979
Obs & Gynae (Obstetrics)	949	8	0	0	957
Geriatric Medicine	866	58	0	0	924
Gastroenterology	808	113	0	0	921
Plastic Surgery	771	80	0	0	851
Other	5,913	965	0	0	6,878
<b>All Specialties</b>	<b>78,285</b>	<b>16,114</b>	<b>8</b>	<b>0</b>	<b>94,407</b>

Source: CH3

**Table 7b Percentage of Patients Waiting for a First Appointment by Months Waiting and Specialty – June 2007**

Specialty	Patients Waiting for an Appointment by Months Waiting			
	0 - 2	3 - 5	6 - 8	9+
General Surgery	88.5%	11.5%	0.0%	0.0%
Ear, Nose & Throat	79.4%	20.6%	0.0%	0.0%
Trauma & Orthopaedics	77.6%	22.4%	0.0%	0.0%
Dermatology	80.5%	19.5%	0.0%	0.0%
Gynaecology	80.3%	19.7%	0.0%	0.0%
Ophthalmology	80.8%	19.2%	0.0%	0.0%
General Medicine	84.2%	15.8%	0.0%	0.0%
Paediatrics	86.7%	13.3%	0.0%	0.0%
Cardiology	89.5%	10.5%	0.0%	0.0%
Rheumatology	79.2%	20.5%	0.3%	0.0%
Mental Illness	86.2%	13.8%	0.0%	0.0%
Neurology	87.6%	12.4%	0.0%	0.0%
Urology	85.0%	15.0%	0.0%	0.0%
Oral Surgery	77.0%	23.0%	0.0%	0.0%
Restorative Dentistry	77.0%	23.0%	0.0%	0.0%
Pain Management	81.0%	19.0%	0.0%	0.0%
Obs & Gynae (Obstetrics)	99.2%	0.8%	0.0%	0.0%
Geriatric Medicine	93.7%	6.3%	0.0%	0.0%
Gastroenterology	87.7%	12.3%	0.0%	0.0%
Plastic Surgery	90.6%	9.4%	0.0%	0.0%
Other	86.0%	14.0%	0.0%	0.0%
<b>All Specialties</b>	<b>82.9%</b>	<b>17.1%</b>	<b>&lt; 0.1%</b>	<b>0.0%</b>

Source: CH3.

### Outpatient Waiting Times by Provider Trust

Waiting times for outpatients by Trust are shown in Table 8.

**Table 8 Number of Patients Waiting for a First Outpatient Appointment by Provider Trust<sup>2</sup> and Months Waiting – June 2007**

Provider Trust	Patients Waiting for an Appointment by Months Waiting				Total Number of Patients Waiting
	0 - 2	3 - 5	6 - 8	9+	
Belfast	29,238	5,617	8	0	34,863
Northern	12,592	3,813	0	0	16,405
South Eastern	11,700	1,591	0	0	13,291
Southern	11,981	1,990	0	0	13,971
Western	12,774	3,103	0	0	15,877
<b>Total</b>	<b>78,285</b>	<b>16,114</b>	<b>8</b>	<b>0</b>	<b>94,407</b>

Source: CH3

<sup>2</sup> refer to Technical Notes – point 10

## Outpatient Waiting Time by Programme of Care

Waiting times for a first outpatient appointment by programme of care are shown in Table 9. The vast majority (94.2%) of patients were awaiting their first outpatient appointment in the Acute Services Programme of Care.

**Table 9** Number of Patients Waiting for a First Appointment by Months Waiting and Programme of Care – June 2007

Programme of Care	Patients Waiting for an Appointment by Months Waiting				Total Number of Patients Waiting
	0 - 2	3 - 5	6 - 8	9+	
Acute Services	73,447	15,506	8	0	88,961
Maternity & Child Health	949	8	0	0	957
Elderly Care	1,298	129	0	0	1,427
Mental Health	2,518	467	0	0	2,985
Learning Disability	73	4	0	0	77
<b>All POCs</b>	<b>78,285</b>	<b>16,114</b>	<b>8</b>	<b>0</b>	<b>94,407</b>

Source: CH3

## Completed Outpatient Waits

Waiting times for completed outpatient waits, for patients treated within Health Service hospitals in Northern Ireland are shown in Table 10. A total of 105,141 patients received a first outpatient appointment within Health Service hospitals (excluding those who had previously cancelled or not attended a previous appointment) during the June 2007 quarter. 70.9% of patients attended their first appointment within 3 months of being placed on the waiting list and 98.1% received their first outpatient appointment within 6 months. Including patients who have cancelled, or not attended a previous appointment, the total number of patients that received a first outpatient appointment within Health Service hospitals in Northern Ireland during the quarter was 114,250.

**Table 10 Completed Outpatient Waits for First Appointment<sup>6</sup>**

Quarter	Time Waiting in Months					Total Number of Completed Outpatient Waits	
	0 - 2	3 - 5	6 - 8	9 - 11	12+	Excluding patients who had cancelled or did not attend a previous appointment	Including patients who had cancelled or did not attend a previous appointment
J - M 2004	69.8%	17.1%	5.2%	2.9%	5.0%	91,496	99,195
A - J 2004	71.8%	15.9%	5.5%	2.7%	4.0%	88,213	95,422
J - S 2004	70.6%	17.9%	5.4%	2.5%	3.6%	84,455	92,527
O - D 2004	68.9%	17.3%	7.0%	2.6%	4.2%	91,915	99,955
<b>J - D 2004</b>	<b>70.3%</b>	<b>17.1%</b>	<b>5.8%</b>	<b>2.7%</b>	<b>4.2%</b>	<b>356,079</b>	<b>387,099</b>
J - M 2005	68.4%	16.4%	7.0%	3.3%	4.9%	86,944	94,865
A - J 2005	70.1%	15.6%	6.9%	2.9%	4.5%	91,489	99,698
J - S 2005	70.8%	16.0%	5.7%	2.9%	4.6%	82,721	92,047
O - D 2005	67.7%	15.9%	7.5%	3.1%	5.7%	91,969	101,037
<b>J - D 2005</b>	<b>69.2%</b>	<b>16.0%</b>	<b>6.8%</b>	<b>3.1%</b>	<b>5.0%</b>	<b>353,123</b>	<b>387,647</b>
J - M 2006	68.0%	15.6%	7.6%	3.7%	5.2%	91,695	101,249
A - J 2006	68.3%	15.0%	7.2%	4.0%	5.5%	90,531	99,418
J - S 2006	63.9%	16.0%	7.3%	4.9%	7.9%	90,716	100,769
O - D 2006	61.0%	17.8%	9.7%	4.5%	7.0%	104,266	113,927
<b>J - D 2006</b>	<b>65.2%</b>	<b>16.2%</b>	<b>8.0%</b>	<b>4.3%</b>	<b>6.4%</b>	<b>377,208</b>	<b>415,363</b>
J - M 2007	61.4%	24.0%	8.6%	2.8%	3.2%	110,712	121,104
A - J 2007	70.9%	27.2%	1.9%	0.1%	0.0%	105,141	114,250

Source: CH4

<sup>6</sup> Refer to Technical Notes – points 19 & 21.

## Completed Outpatient Waits including Independent Sector Activity– June 2007

During the June 2007 quarter, a number of patients attended a first outpatient appointment, commissioned by the Health Service, within the Independent Sector. Estimates of the number of patients attending a first outpatient appointment, within the Independent Sector have been provided by commissioning Trusts.

It is estimated that approximately 3,939 Health Service patients attended a first outpatient appointment, within the Independent Sector during the quarter ending June 2007. When this number is combined with that for outpatients attending a first appointment in Health Service hospitals during the same period, it is estimated that approximately 118,189 outpatients attended a first appointment in Northern Ireland for an assessment commissioned by the Health Service.

**Table 11 Completed Outpatient Waits by Trust including Independent Sector Activity<sup>7</sup>**

<b>Provider Trust</b>	<b>Number of Completed Outpatient waits within Health Service Hospitals</b>	<b>Number of Completed Outpatient Waits in Independent Sector</b>	<b>Total Number of Completed Outpatient Waits Commissioned by Health Service</b>
Belfast	41,013	829	41,842
Northern	15,212	617	15,829
South Eastern	17,881	1,365	19,246
Southern	16,498	482	16,980
Western	23,646	646	24,292
<b>Total Treated</b>	<b>114,250</b>	<b>3,939</b>	<b>118,189</b>

Source: Health and Social Service Trusts

<sup>7</sup>Refer to Technical Notes – points 10, 20 & 21.

## Technical Notes

1. The sources for the data contained in this release are the Information Returns CH1, CH2, CH3 and CH4. These returns collect information from Hospital Trusts on a quarterly basis.
2. Trust based information (CH1, CH2, CH3 and CH4) returns include all patients living outside Northern Ireland and all privately funded patients waiting for treatment in Health Service hospitals. This Trust based information falls within the scope of National Statistics.
3. A review is underway, consistent with the 'National Statistics Code of Practice – Protocol on Revisions' looking at changes in methodology for collecting inpatient/day cases waiting time data. A paper detailing any changes to the methodology for collecting this data and any implications that these may have on the data will be published on the DHSSPS website ahead of publication of this data. The current ministerial target for inpatient/day cases states that, by 31 March 2008, no patient should be waiting more than 21 weeks for inpatient admission. The successful completion of this review and the transition to patient level data will enable the 21 week target to be monitored in future quarters.
4. Waiting time relates to the number of completed months a patient has been waiting (or in the case for completed waits, how long a patient had waited) for either their first outpatient appointment or for inpatient admission. For example, a patient waiting 2 months and 30 days would be included in the 0-2 month category and a patient waiting 3 months and 01 day would be included in the 3-5 month category.
5. Inpatient waiting list data comprises the number of patients waiting for ordinary admission to hospital and the number of patients waiting for day case treatment.
6. Ordinary admissions include both (a) patients admitted electively with the expectation that they will remain in hospital for at least one night, and (b) non-elective admissions (e.g. emergency admissions). A patient who is admitted with either of the above intentions, but who leaves hospital for any reason without staying overnight, is still counted as an ordinary admission. Day cases are not included.
7. Day Cases are patients admitted electively during the course of a day with the intention of receiving care but who do not require the use of a hospital bed overnight and who return home as scheduled. If this original intention is not fulfilled and the patient stays overnight, such a patient is counted as an ordinary admission.
8. The waiting list inpatient figures presented include people waiting to be admitted as inpatients either as day cases or ordinary admissions. They do not include:
  - Patients admitted as emergency cases;
  - Outpatients;
  - Patients undergoing a planned programme of treatment e.g. a series of admissions for chemotherapy;
  - Maternity (specialties 510 and 520);
  - Patients already in hospitals but included on other waiting lists;
  - Patients who are temporarily suspended from waiting lists.
9. Waiting time begins from the date the clinician decided to admit the patient. Patients subsequently offered a date but unable to attend have their waiting times calculated from the most recent date offered. These are known as CNA's (Could Not Attend) and are included in the total number waiting.

10. In accordance with the Review of Public Administration with effect from the 1<sup>st</sup> April 2007, five new integrated Health and Social Services Trusts (Belfast, Northern, South Eastern and Western) replaced the previous eighteen provider Trusts in Northern Ireland. Where applicable, tables have been presented based on the new Trust Areas.
11. Waiting times for completed inpatient waits relate to the entire time period between the initial decision to admit and the date of admission, including periods of suspension.
12. The number of completed inpatient waits at 31 March 2007 has been revised from 46,653 to 46,645. This is due to a revision from Ulster Hospital Trust (South Eastern) for that quarter.
13. The number of patients that received inpatient treatment, commissioned by the Health Service, in the Independent Sector is provided in Table 5. These figures have been provided for each transferring Health Trust (Health Trust responsible for the patients waiting time). They are not governed by National Statistics and they have not been validated by the Department.
14. The Department has been informed that some Health Service outpatients treated in the Independent Sector who have subsequently been listed for inpatient treatment within the Independent Sector have not been recorded as waiting for inpatient treatment by the transferring Trust. Transferring Trusts are responsible for the inpatient waiting time of such patients. As a result, these patients, and their subsequent waiting time have not been recorded on the HPSS Trust's Patient Administration System (PAS) and do not appear in the figures relating to patients waiting for inpatient treatment in this publication. While the Department has instructed Trusts to ensure that all such patients are recorded on the PAS by the end of August 2007, it has not been possible to obtain estimates of these data prior to publication. The department will endeavour to resolve this issue as soon as possible and ensure that amendments to the waiting position for the quarter ending June 2007 are reflected in the next publication which is due for release on Thursday, 6<sup>th</sup> December 2007.
15. Outpatients are defined as patients still waiting for their first outpatient appointment at the end of the quarter. An outpatient appointment is to enable a patient to see a consultant, a member of his firm or locum for such a member, in respect of one referral.
16. Outpatient waiting list figures presented do not include maternity specialties 510 and 520.
17. The current Ministerial target for outpatients states that no patient should be waiting more than 13 weeks for a first outpatient appointment by 31 March 2008. Due to technical reasons it has not been possible to provide outpatient waiting lists in weeks for quarter ending 30 June 2007. Figures provided on outpatients waiting, '3 months and over' are approximations for patients waiting 'more than 13 weeks'.
18. Following a recent revision in policy, patients who either cancel or fail to attend an outpatient appointment have their waiting time reset to either the date on which the appointment was cancelled or the date on which they did not attend the appointment.
19. Waiting times for completed outpatient waits relate to the entire time period between the initial referral, or date the patient cancelled (CNA) or did not attend (DNA) a first outpatient appointment, and the date the patient attended their first outpatient appointment.
20. The number of patients that received an outpatient assessment, commissioned by the Health Service, in the Independent Sector is provided in Table 11. These figures have been provided for each transferring Health Trust (Trust responsible for the patients waiting time). They are not governed by National Statistics and they have not been validated by the Department.

21. In Table 11, a small number of Independent Sector completed waits for the Belfast Trust are included in the Health Service total as Belfast City Hospital were unable to provide off site Independent Sector activity within the timescales required.
22. Department of Health, Social Services and Public Safety policy is to publish revised figures with subsequent statistical releases unless it is decided that the magnitude of the change merits earlier notification.
23. Figures relating to the quarter ending 30<sup>th</sup> September 2007 will be released on Thursday, 6<sup>th</sup> December 2007.
24. For general enquiries about National Statistics, contact the National Statistics Public Service on **020 7533 5888**

minicom: 01633 812399

E-mail: [info@statistics.gov.uk](mailto:info@statistics.gov.uk)

Fax: 01633 652747

Letters: room DG/18, Drummond Gate,  
LONDON SW1V 2QQ

You can also find National Statistics on the internet – Go to [www.statistics.gov.uk](http://www.statistics.gov.uk).

### **Additional Information**

Further information on waiting lists in Northern Ireland is available from:

Office Information Manager  
Hospital Information Branch  
Department of Health, Social Services and Public Safety  
Annexe 2  
Castle Buildings  
Stormont  
BT4 3SQ

E-mail: [statistics@dhsspsni.gov.uk](mailto:statistics@dhsspsni.gov.uk)

Internet address: [http://www.dhsspsni.gov.uk/stats-hospital\\_community\\_statistics#waiting](http://www.dhsspsni.gov.uk/stats-hospital_community_statistics#waiting)