

Statistics Release



Department of
**Health, Social Services
and Public Safety**

An Roinn

**Sláinte, Seirbhísí Sóisialta
agus Sábháilteachta Poiblí**

www.dhsspsni.gov.uk

07 June 2007

Northern Ireland Waiting Lists – March 2007

This statistics release gives details of the number of people waiting for inpatient or outpatient treatment at hospitals in Northern Ireland at the end of March 2007, the most recent quarter for which figures are available.

Inpatients

Headline Totals – Table 1

The total number of patients waiting to be admitted to hospitals in Northern Ireland at the end of March 2007 stood at 37,978.

Over the quarter, comparing the end of March 2007 with the end of December 2006 (40,252), the total number waiting has decreased by 2,274 (-5.6%).

Over the year, comparing the end of March 2007 with the end of March 2006 (41,448), the total number waiting decreased by 3,470 (-8.4%).

Table 1: Quarterly Inpatient Waiting Lists – March 2007

Waiting for:	Quarter Ending March 2007	Change compared with end of previous quarter	Change compared with end same quarter – previous year
Ordinary Admissions	13,414	-959	-1,938
Day case Admissions	24,564	-1,315	-1,532
Total Waiting	37,978	-2,274	-3,470

Source: CH1

Detailed notes and definitions are provided in the Technical Notes.



A National Statistics Publication

National Statistics are produced to high professional standards set out in the National Statistics Code of Practice. They undergo regular quality assurance reviews to ensure that they meet customer needs. They are produced free from any political interference.

Numbers Waiting for Ordinary Admission and Day Case Treatment

People on the inpatient waiting list in Northern Ireland can be waiting for admission to hospital as day cases or as ordinary admissions.

Of the 37,978 people waiting for admission to hospital at the end of March 2007, 13,414 (35.3%) were waiting for ordinary admission and 24,564 (64.7%) were waiting for day case admission (Table 1).

Since the end of December 2006, the number of cases waiting for ordinary admission has decreased by 959 (-6.7%) and the number waiting for day case admission has decreased by 1,315 (-5.1%).

In comparison with March 2006, the number of cases waiting for ordinary admission has decreased by 1,938 (-12.6%) and the number waiting for day case admission has decreased by 1,532 (-5.9%).

Waiting Times for Ordinary Admission and Day Case Treatment¹ – Table 2

At the end of March 2007, there was one patient waiting 6 months and over for treatment.

Over the quarter, comparing the end of March 2007 with the end of December 2006, the number of people waiting 6 months and over decreased by 2,551, an almost 100% decrease.

Over the year, comparing the end of March 2007 with the end of March 2006, the number of people waiting 6 months and over decreased by 6,579, a fall of almost 100%.

Table 2 Patients Waiting 6 Months and Over¹ – March 2007

Waiting for:	Quarter Ending March 2007	Change compared with end of previous quarter	Change compared with end same quarter - previous year
Ordinary admissions	0	-1,300	-3,350
Day case admissions	1	-1,251	-3,229
Total Waiting	1	-2,551	-6,579

Source: CH1

¹ Refer to Technical Notes – point 3.

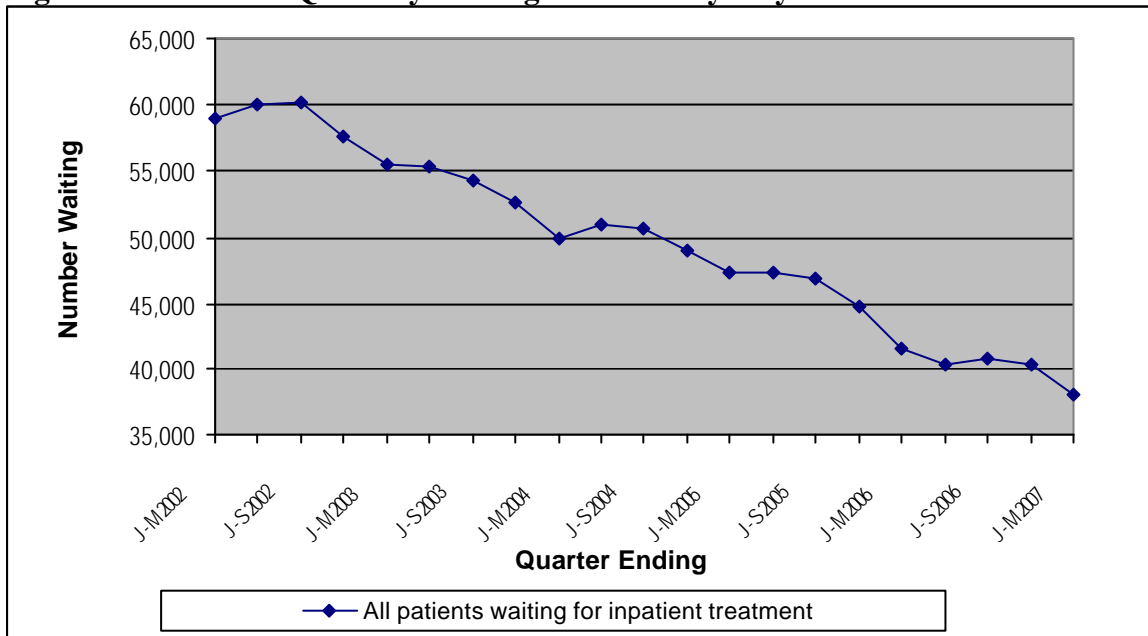
Peak Figures

The end of March 2007 total of 37,978 on the inpatient waiting list represents a decrease of 22,212 (-36.9%) on the peak waiting list figure of 60,190 (end September 2002).

Trends

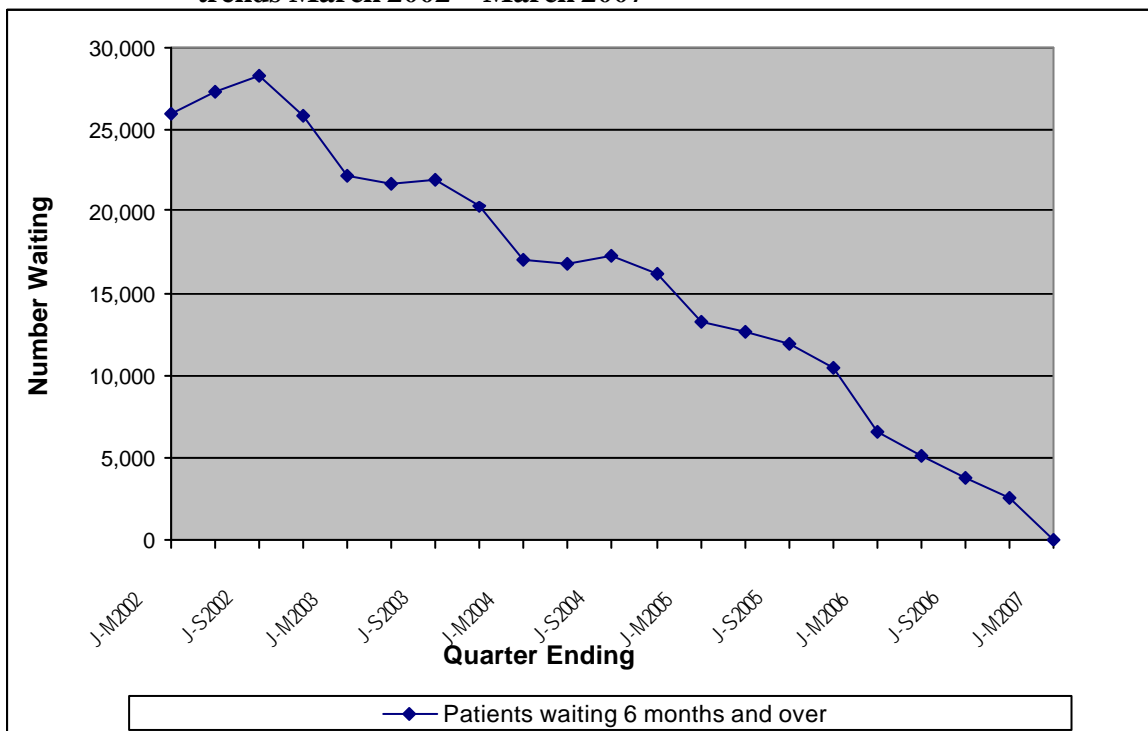
The total number of people waiting for inpatient treatment was on a generally upward trend from June 2001, and rose to peak in September 2002. There has been an overall downward trend since this peak. Patients waiting 6 months and over have also been generally on a downward trend since September 2002 (Figure 2).

Figure 1 Total Quarterly Waiting Lists – Five yearly trends March 2002 – March 2007



Source: CH1

Figure 2 Quarterly Waiting Lists Patients waiting 6 months and over¹- Five yearly trends March 2002 – March 2007



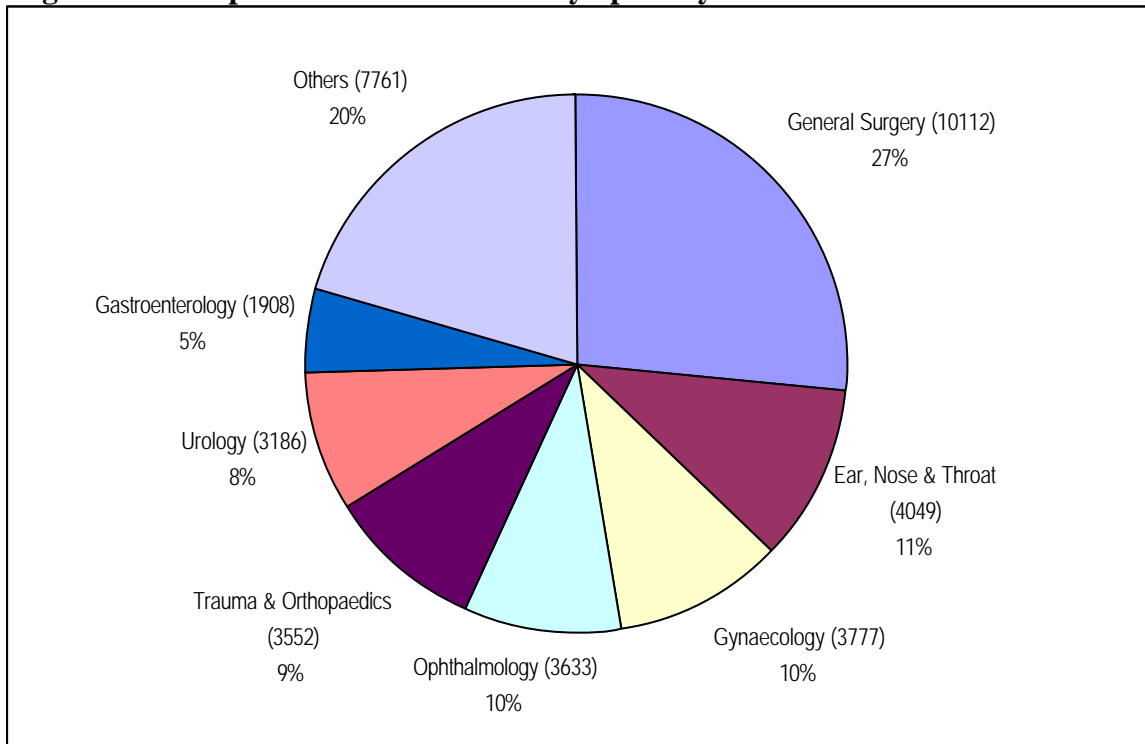
Source: CH1

¹ Refer to Technical Notes – point 3.

Inpatients Waiting by Specialty

The overwhelming majority of those waiting (80.0%) were within seven specialties: General Surgery; Ear, Nose and Throat (ENT); Gynaecology (Gynae); Ophthalmology; Trauma and Orthopaedic Surgery (T&O); Urology and Gastroenterology (Figure 3).

Figure 3 Inpatients - Total Waiters by Specialty at the end of March 2007



Source: CH1

Inpatient Waiting Time by Specialty

Waiting times for inpatients by specialty are shown in Tables 3a and 3b. Overall 75.1% of those waiting for admission were waiting less than 3 months. More than 99% of patients were waiting for treatment in the Acute Services Programme of Care.

Table 3a Number of Patients Waiting for Admission by Months Waiting and Specialty – March 2007

Specialty	Patients Waiting for Admission by Months Waiting									Total Number of Patients Awaiting Admission
	0 - 2	3 - 5	6 - 8	9 - 11	12 - 14	15 - 17	18 - 20	21 - 23	24 +	
General Surgery	7,721	2,390	0	1	0	0	0	0	0	10,112
Ear, Nose & Throat	2,891	1,158	0	0	0	0	0	0	0	4,049
Gynaecology	2,797	980	0	0	0	0	0	0	0	3,777
Ophthalmology	2,917	716	0	0	0	0	0	0	0	3,633
Trauma & Orthopaedics	2,425	1,127	0	0	0	0	0	0	0	3,552
Urology	2,306	880	0	0	0	0	0	0	0	3,186
Gastroenterology	1,462	446	0	0	0	0	0	0	0	1,908
General Medicine	1,478	221	0	0	0	0	0	0	0	1,699
Cardiology	1,020	365	0	0	0	0	0	0	0	1,385
Plastic Surgery	503	208	0	0	0	0	0	0	0	711
Pain Management	466	236	0	0	0	0	0	0	0	702
Rheumatology	430	94	0	0	0	0	0	0	0	524
Paediatric Surgery	348	170	0	0	0	0	0	0	0	518
Dermatology	314	169	0	0	0	0	0	0	0	483
Oral Surgery	381	65	0	0	0	0	0	0	0	446
Cardiac Surgery	159	133	0	0	0	0	0	0	0	292
General Practice (Other)	269	21	0	0	0	0	0	0	0	290
Neurology	100	33	0	0	0	0	0	0	0	133
Nephrology	71	8	0	0	0	0	0	0	0	79
Thoracic Medicine	67	5	0	0	0	0	0	0	0	72
Other	390	37	0	0	0	0	0	0	0	427
All Specialties	28,515	9,462	0	1	0	0	0	0	0	37,978

Source: CHI

Table 3b Percentage of Patients Waiting for Admission by Months Waiting and Specialty – March 2007

Specialty	Patients Waiting for Admission by Months Waiting								
	0 - 2	3 - 5	6 - 8	9 - 11	12 - 14	15 - 17	18 - 20	21 - 23	24 +
General Surgery	76.4%	23.6%	0.0%	<0.1%	0.0%	0.0%	0.0%	0.0%	0.0%
Ear, Nose & Throat	71.4%	28.6%	0.0%	0.0%	0.0%	0.0%	0.0%	0.0%	0.0%
Gynaecology	74.1%	25.9%	0.0%	0.0%	0.0%	0.0%	0.0%	0.0%	0.0%
Ophthalmology	80.3%	19.7%	0.0%	0.0%	0.0%	0.0%	0.0%	0.0%	0.0%
Trauma & Orthopaedics	68.3%	31.7%	0.0%	0.0%	0.0%	0.0%	0.0%	0.0%	0.0%
Urology	72.4%	27.6%	0.0%	0.0%	0.0%	0.0%	0.0%	0.0%	0.0%
Gastroenterology	76.6%	23.4%	0.0%	0.0%	0.0%	0.0%	0.0%	0.0%	0.0%
General Medicine	87.0%	13.0%	0.0%	0.0%	0.0%	0.0%	0.0%	0.0%	0.0%
Cardiology	73.6%	26.4%	0.0%	0.0%	0.0%	0.0%	0.0%	0.0%	0.0%
Plastic Surgery	70.7%	29.3%	0.0%	0.0%	0.0%	0.0%	0.0%	0.0%	0.0%
Pain Management	66.4%	33.6%	0.0%	0.0%	0.0%	0.0%	0.0%	0.0%	0.0%
Rheumatology	82.1%	17.9%	0.0%	0.0%	0.0%	0.0%	0.0%	0.0%	0.0%
Paediatric Surgery	67.2%	32.8%	0.0%	0.0%	0.0%	0.0%	0.0%	0.0%	0.0%
Dermatology	65.0%	35.0%	0.0%	0.0%	0.0%	0.0%	0.0%	0.0%	0.0%
Oral Surgery	85.4%	14.6%	0.0%	0.0%	0.0%	0.0%	0.0%	0.0%	0.0%
Cardiac Surgery	54.5%	45.5%	0.0%	0.0%	0.0%	0.0%	0.0%	0.0%	0.0%
General Practice (Other)	92.8%	7.2%	0.0%	0.0%	0.0%	0.0%	0.0%	0.0%	0.0%
Neurology	75.2%	24.8%	0.0%	0.0%	0.0%	0.0%	0.0%	0.0%	0.0%
Nephrology	89.9%	10.1%	0.0%	0.0%	0.0%	0.0%	0.0%	0.0%	0.0%
Thoracic Medicine	93.1%	6.9%	0.0%	0.0%	0.0%	0.0%	0.0%	0.0%	0.0%
Other	91.3%	8.7%	0.0%	0.0%	0.0%	0.0%	0.0%	0.0%	0.0%
All Specialties	75.1%	24.9%	0.0%	<0.1%	0.0%	0.0%	0.0%	0.0%	0.0%

Source: CHI

Inpatient Waiting Times by Provider Trust

Waiting times for inpatients by Trust are shown in Table 4.

Table 4 Number of Patients Waiting for Admission by Provider Trust and by Months Waiting – March 2007

Provider Trust	Patients Waiting for Admission by Months Waiting									Total Number of Patients Awaiting Admission
	0 - 2	3 - 5	6 - 8	9 - 11	12 - 14	15 - 17	18 - 20	21 - 23	24 +	
Altnagelvin Group	3,159	1,037	0	0	0	0	0	0	0	4,196
Armagh and Dungannon	77	0	0	0	0	0	0	0	0	77
Belfast City Hospital	3,335	1,214	0	0	0	0	0	0	0	4,549
Causeway	1,441	329	0	0	0	0	0	0	0	1,770
Craigavon Area Hospital Group	3,868	1,819	0	1	0	0	0	0	0	5,688
Down Lisburn	983	393	0	0	0	0	0	0	0	1,376
Foyle Community	54	10	0	0	0	0	0	0	0	64
Green Park Healthcare	2,077	881	0	0	0	0	0	0	0	2,958
Homefirst	46	3	0	0	0	0	0	0	0	49
Mater Infirmorum Hospital	1,557	168	0	0	0	0	0	0	0	1,725
Newry & Mourne	672	212	0	0	0	0	0	0	0	884
North & West	10	0	0	0	0	0	0	0	0	10
Royal Group of Hospitals	4,086	1,390	0	0	0	0	0	0	0	5,476
South and East Belfast	22	2	0	0	0	0	0	0	0	24
Sperrin Lakeland	1,354	284	0	0	0	0	0	0	0	1,638
Ulster Community & Hospitals	2,646	877	0	0	0	0	0	0	0	3,523
United Hospitals Group	3,128	843	0	0	0	0	0	0	0	3,971
Total	28,515	9,462	0	1	0	0	0	0	0	37,978

Source: CH1

Completed Inpatient Waits – March 2007

Waiting times for completed inpatient waits, for patients treated within Health Service hospitals in Northern Ireland are shown in Table 5. A total of 41,087 inpatients were admitted to Health Service hospitals (excluding those who had previously refused an offer of admission) during the March 2007 quarter. 70.5% of patients received their treatment within 3 months of being placed on the waiting list and 92.5% received their treatment within 6 months. Including patients who have been medically deferred, or did not attend a previously arranged admission date, the total number of patients admitted to Health Service hospitals in Northern Ireland during the quarter was 46,653.

Table 5 Completed Inpatient Waits²

Quarter	Time Waiting in Months									Total Number of Completed Inpatient Waits	
	0 - 2	3 - 5	6 - 8	9 - 11	12 - 14	15 - 17	18 - 20	21 - 23	24 +	Excluding patients who have medically deferred or did not attend on a previously arranged admission date	Including patients who have medically deferred or did not attend on a previously arranged admission date
J - M 2004	74.4%	11.6%	4.8%	3.5%	1.9%	1.3%	0.6%	0.5%	1.3%	40,924	44,157
A - J 2004	74.6%	11.4%	5.9%	3.1%	1.9%	1.2%	0.6%	0.3%	0.9%	38,507	41,273
J - S 2004	73.1%	13.1%	5.4%	3.7%	1.9%	1.1%	0.7%	0.3%	0.7%	37,166	40,153
O - D 2004	73.4%	12.3%	5.5%	3.7%	2.3%	1.1%	0.7%	0.4%	0.7%	41,330	44,232
J - D 2004	73.9%	12.1%	5.4%	3.5%	2.0%	1.2%	0.6%	0.4%	0.9%	157,927	169,815
J - M 2005	72.9%	12.9%	4.8%	3.9%	1.9%	1.6%	0.8%	0.5%	0.7%	39,248	42,567
A - J 2005	74.1%	12.5%	6.2%	3.1%	2.0%	1.3%	0.5%	0.1%	0.3%	41,183	44,448
J - S 2005	72.0%	12.9%	5.4%	3.8%	2.4%	1.8%	0.9%	0.3%	0.3%	37,094	40,422
O - D 2005	72.7%	11.6%	6.1%	5.0%	2.9%	1.0%	0.4%	0.1%	0.2%	40,360	44,606
J - D 2005	72.9%	12.5%	5.6%	3.9%	2.3%	1.4%	0.6%	0.3%	0.4%	157,885	172,043
J - M 2006	70.2%	13.7%	6.9%	5.8%	2.3%	0.6%	0.2%	0.1%	0.3%	41,111	45,827
A - J 2006	71.0%	14.8%	8.2%	4.8%	0.8%	0.1%	0.1%	0.1%	0.1%	39,308	43,553
J - S 2006	69.6%	16.4%	8.7%	4.4%	0.5%	0.2%	0.1%	0.0%	0.1%	36,752	41,004
O - D 2006	70.8%	17.7%	9.5%	1.4%	0.2%	0.1%	0.1%	0.1%	0.1%	39,856	44,994
J - D 2006	70.4%	15.6%	8.3%	4.1%	1.0%	0.2%	0.1%	0.1%	0.2%	157,027	175,378
J - M 2007	70.5%	22.0%	6.6%	0.6%	0.2%	0.1%	0.0%	0.0%	0.0%	41,087	46,653

Completed Inpatient Waits including Independent Sector Activity– March 2007

During the March 2007 quarter, a number of patients received inpatient treatment, commissioned by the Health Service, within the Independent Sector. Estimates of the number of patients admitted for inpatient treatment within the Independent Sector have been provided by the commissioning Trust

It is estimated that approximately 1,353 Health Service patients were treated within the Independent Sector during the quarter ending March 2007. When this number is combined with that for inpatients admitted to Health Service hospitals during the quarter, it is estimated that approximately 48,006 inpatients were admitted to hospital in Northern Ireland for treatment commissioned by the Health Service.

Table 6 Completed Inpatient Waits by Trust including Independent Sector Activity³

Provider Trust	Number of Completed Inpatient Waits within Health Service Hospitals	Number of Completed Inpatient Waits in Independent Sector	Total Number of Completed Inpatient Waits Commissioned by Health Service
Altnagelvin Group	4,465	524	4,989
Belfast City Hospital	6,466	212	6,678
Causeway	1,872	0	1,872
Craigavon Area Hospital Group	4,994	79	5,073
Down Lisburn	2,177	16	2,193
Green Park Healthcare	2,613	45	2,658
Mater Infirmorum	2,795	0	2,795
Newry & Mourne	1,323	0	1,323
Royal Group of Hospitals	8,931	149	9,080
South & East	107	0	107
Sperrin Lakeland	2,019	0	2,019
Ulster Community & Hospitals	4,566	255	4,821
United Hospitals Group	4,325	73	4,398
Total Treated	46,653	1,353	48,006

Source: Health and Social Service Trusts

³Refer to Technical Notes – point 11

Outpatients

Headline Totals - Table 7

The number of patients waiting for a first outpatient appointment (including cancellations and deferrals) at the end of March 2007 stood at 102,491.

Over the quarter, comparing the end of March 2007 with the end of December 2006 (154,607), the total number has decreased by 52,116 (-33.7%).

Over the year, comparing the end of March 2007 with the end of March 2006 (180,986), the total number waiting decreased by 78,495 (-43.4%).

Excluding cancellations and deferrals, the quarterly and annual decreases were 34.6% and 43.7% respectively.

Table 7: Quarterly Outpatient Waiting Lists - March 2007⁴

Waiting for:	Quarter Ending March 2007	Change compared with end of previous quarter	Change compared with end same quarter - previous year
Excluding Cancellations and Deferrals	94,304	-49,920	-73,111
Cancellations and Deferrals	8,187	-2,196	-5,384
Total Waiting	102,491	-52,116	-78,495

Source: CH3

⁴ Refer to Technical Note 14.

Waiting Times for Initial Outpatient Appointment - Table 8

At the end of March 2007, the number of patients waiting 6 months and over was 32, < 0.1.% of the total waiting.

Over the quarter, comparing the end of March 2007 with the end of December 2006, the number of people waiting 6 months and over decreased by 43,833 (-99.9%).

Over the year, comparing the end of March 2007 with the end of March 2006, the number of people waiting 6 months and over decreased by 73,883, an almost 100% decrease.

Table 8 Patients Waiting 6 Months and Over¹ - March 2007

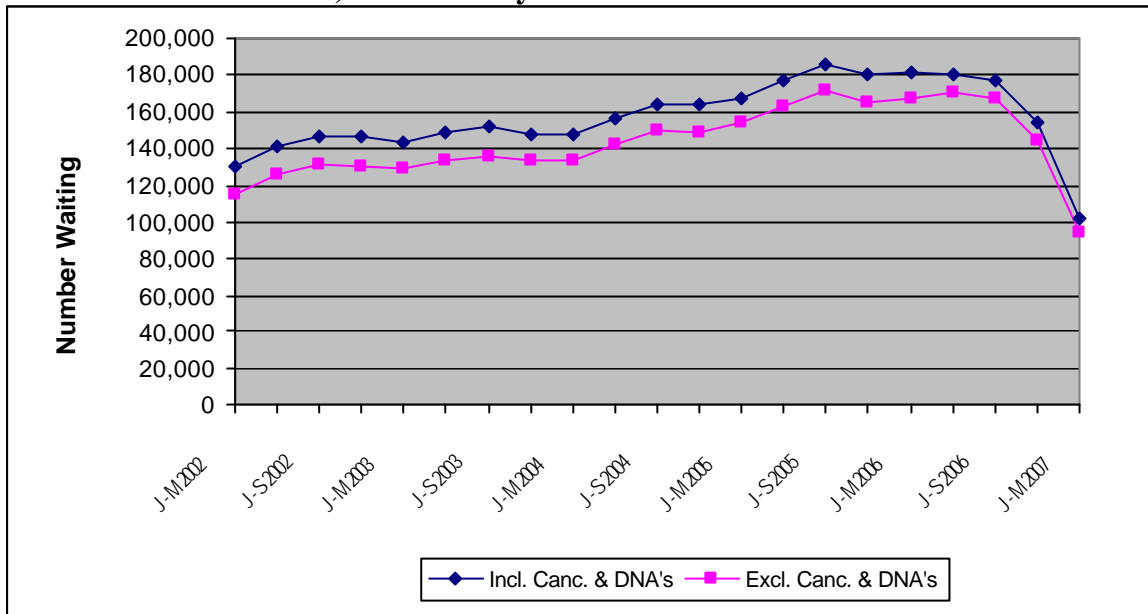
Waiting for:	Quarter Ending March 2007	Change compared with end of previous quarter	Change compared with end same quarter - previous year
Excluding Cancellations and Deferrals	32	-42,596	-65,181
Cancellations and Deferrals	0	-1,237	-8,702
Total Waiting	32	-43,833	-73,883

Source: CH3

¹ Refer to Technical Note 3.

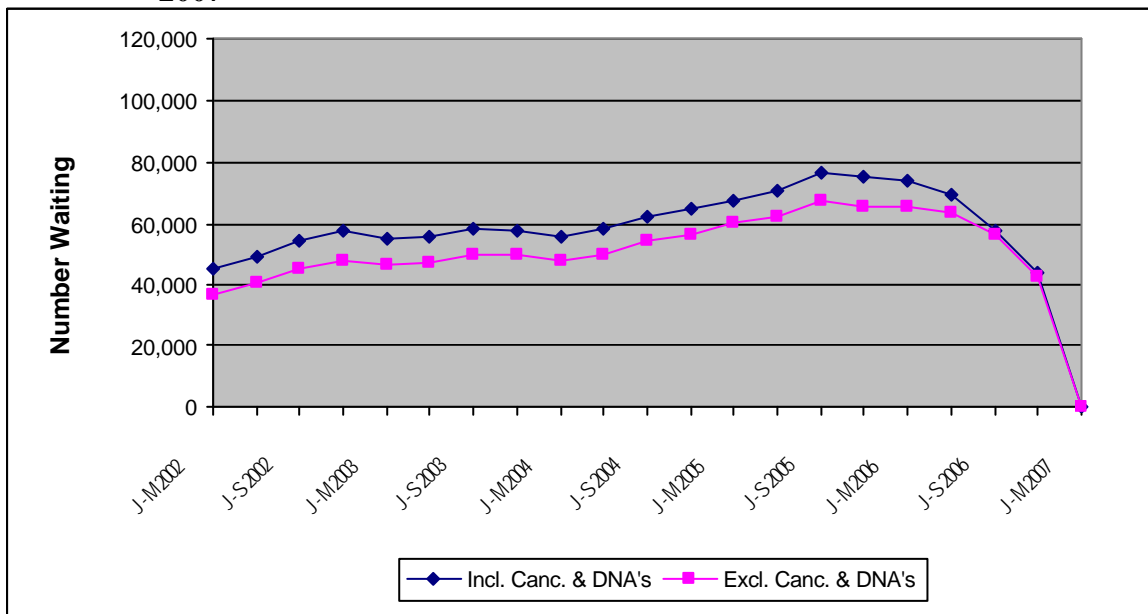
Figure 4 shows five yearly trends in the number of outpatients waiting for a first appointment. Figure 5 shows the same trends information for patients waiting 6 months and over for a first outpatient appointment.

Figure 4 Outpatients Waiting for a First Appointment (including and excluding cancellations and deferrals) – Five Yearly Trends March 2002 – March 2007



Source: CH3 Parts 1 & 2.

Figure 5 Outpatients waiting 6 months and over for a First Appointment (including and excluding cancellations and deferrals) - Five Yearly Trends March 2002 – March 2007¹



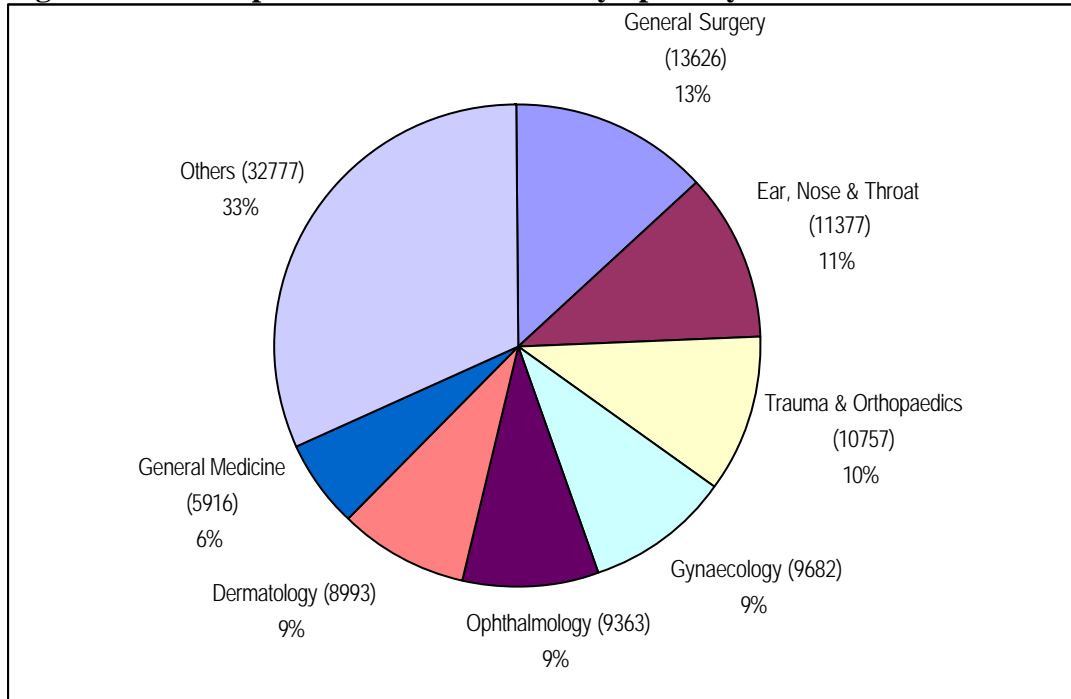
Source: CH3 Parts 1 & 2

¹ Refer to Technical Note 3

Outpatients Waiting by Specialty

The majority of those waiting (67.0%) were within seven specialties: General Surgery; Ear, Nose and Throat (ENT); Trauma & Orthopaedics; Gynaecology (Gynae); Ophthalmology; Dermatology and General Medicine (Figure 6a). Figures represent the total number waiting for their first outpatient appointment during the March 2007 quarter including those who have cancelled or missed a previous appointment.

Figure 6a Outpatients – Total Waiters by Specialty at the end of March 2007



Source: CH3.

Outpatient Waiting Time by Specialty

Waiting times for outpatients by specialty are shown in Tables 9a and 9b. Overall 78.1% of those waiting for treatment were waiting less than 3 months.

Table 9a Number of Patients Waiting for a First Appointment by Months Waiting and Specialty – March 2007

Specialty	Patients Waiting for an Appointment by Months Waiting									Total Number of Patients Awaiting Appointment
	0 - 2	3 - 5	6 - 8	9 - 11	12 - 14	15 - 17	18 - 20	21 - 23	24 +	
General Surgery	11,100	2,522	4	0	0	0	0	0	0	13,626
Ear, Nose & Throat	8,791	2,560	1	7	9	2	1	3	3	11,377
Trauma & Orthopaedics	7,285	3,471	0	1	0	0	0	0	0	10,757
Gynaecology	7,541	2,141	0	0	0	0	0	0	0	9,682
Ophthalmology	7,320	2,043	0	0	0	0	0	0	0	9,363
Dermatology	7,269	1,724	0	0	0	0	0	0	0	8,993
General Medicine	4,870	1,046	0	0	0	0	0	0	0	5,916
Paediatrics	3,407	794	0	0	0	0	0	0	0	4,201
Cardiology	2,766	588	0	0	0	0	0	0	0	3,354
Urology	1,769	582	1	0	0	0	0	0	0	2,352
Mental Illness	2,025	307	0	0	0	0	0	0	0	2,332
Rheumatology	1,629	621	0	0	0	0	0	0	0	2,250
Neurology	1,687	483	0	0	0	0	0	0	0	2,170
Oral Surgery	1,601	466	0	0	0	0	0	0	0	2,067
Restorative Dentistry	970	487	0	0	0	0	0	0	0	1,457
Geriatric Medicine	888	184	0	0	0	0	0	0	0	1,072
Gastroenterology	822	248	0	0	0	0	0	0	0	1,070
Plastic Surgery	610	400	0	0	0	0	0	0	0	1,010
Obs & Gynae (Obstetrics)	972	3	0	0	0	0	0	0	0	975
Pain Management	737	228	0	0	0	0	0	0	0	965
Other	6,002	1,500	0	0	0	0	0	0	0	7,502
All Specialties	80,061	22,398	6	8	9	2	1	3	3	102,491

Source: CH3

Table 9b Percentage of Patients Waiting for a First Appointment by Months Waiting and Specialty – March 2007

Specialty	Patients Waiting for an Appointment by Months Waiting								
	0 - 2	3 - 5	6 - 8	9 - 11	12 - 14	15 - 17	18 - 20	21 - 23	24+
General Surgery	81.5%	18.5%	<0.1%	0.0%	0.0%	0.0%	0.0%	0.0%	0.0%
Ear, Nose & Throat	77.3%	22.5%	<0.1%	0.1%	0.1%	<0.1%	<0.1%	<0.1%	<0.1%
Trauma & Orthopaedics	67.7%	32.3%	0.0%	0.0%	0.0%	0.0%	0.0%	0.0%	0.0%
Gynaecology	77.9%	22.1%	0.0%	0.0%	0.0%	0.0%	0.0%	0.0%	0.0%
Ophthalmology	78.2%	21.8%	0.0%	0.0%	0.0%	0.0%	0.0%	0.0%	0.0%
Dermatology	80.8%	19.2%	0.0%	0.0%	0.0%	0.0%	0.0%	0.0%	0.0%
General Medicine	82.3%	17.7%	0.0%	0.0%	0.0%	0.0%	0.0%	0.0%	0.0%
Paediatrics	81.1%	18.9%	0.0%	0.0%	0.0%	0.0%	0.0%	0.0%	0.0%
Cardiology	82.5%	17.5%	0.0%	0.0%	0.0%	0.0%	0.0%	0.0%	0.0%
Urology	75.2%	24.7%	<0.1%	0.0%	0.0%	0.0%	0.0%	0.0%	0.0%
Mental Illness	86.8%	13.2%	0.0%	0.0%	0.0%	0.0%	0.0%	0.0%	0.0%
Rheumatology	72.4%	27.6%	0.0%	0.0%	0.0%	0.0%	0.0%	0.0%	0.0%
Neurology	77.7%	22.3%	0.0%	0.0%	0.0%	0.0%	0.0%	0.0%	0.0%
Oral Surgery	77.5%	22.5%	0.0%	0.0%	0.0%	0.0%	0.0%	0.0%	0.0%
Restorative Dentistry	66.6%	33.4%	0.0%	0.0%	0.0%	0.0%	0.0%	0.0%	0.0%
Geriatric Medicine	82.8%	17.2%	0.0%	0.0%	0.0%	0.0%	0.0%	0.0%	0.0%
Gastroenterology	76.8%	23.2%	0.0%	0.0%	0.0%	0.0%	0.0%	0.0%	0.0%
Plastic Surgery	60.4%	39.6%	0.0%	0.0%	0.0%	0.0%	0.0%	0.0%	0.0%
Obs & Gynae (Obstetrics)	99.7%	0.3%	0.0%	0.0%	0.0%	0.0%	0.0%	0.0%	0.0%
Pain Management	76.4%	23.6%	0.0%	0.0%	0.0%	0.0%	0.0%	0.0%	0.0%
Other	80.0%	20.0%	0.0%	0.0%	0.0%	0.0%	0.0%	0.0%	0.0%
All Specialties	78.1%	21.9%	<0.1%	<0.1%	<0.1%	<0.1%	<0.1%	<0.1%	<0.1%

Source: CH3.

Outpatient Waiting Times by Provider Trust

Waiting times for outpatients by Trust are shown in Table 10.

Table 10 Number of Patients Waiting for a First Outpatient Appointment by Provider Trust and Months Waiting – March 2007

Provider Trust	Patients Waiting for an Appointment by Months Waiting									Total Number
	0 - 2	3 - 5	6 - 8	9 - 11	12 - 14	15 - 17	18 - 20	21 - 23	24 +	
Altnagelvin Group	9,611	2,795	5	0	0	0	0	0	0	12,411
Armagh & Dungannon	957	164	0	0	0	0	0	0	0	1,121
Belfast City Hospital	5,970	660	0	0	0	0	0	0	0	6,630
Causeway	2,838	581	0	0	0	0	0	0	0	3,419
Craigavon & Banbridge	356	35	0	0	0	0	0	0	0	391
Craigavon Area Hospital Group	7,539	2,289	0	0	0	0	0	0	0	9,828
Down Lisburn	3,344	424	0	0	0	0	0	0	0	3,768
Foyle Community	402	45	0	0	0	0	0	0	0	447
Green Park Healthcare	5,291	3,019	0	0	0	0	0	0	0	8,310
Homefirst Community	661	94	0	0	0	0	0	0	0	755
Mater Infirmorum Hospital	3,184	1,116	0	0	0	0	0	0	0	4,300
North and West Belfast	200	32	0	0	0	0	0	0	0	232
Newry & Mourne	3,136	498	0	0	0	0	0	0	0	3,634
Royal Group of Hospitals	14,968	4,713	0	1	0	0	0	0	0	19,682
South and East Belfast	544	49	0	0	0	0	0	0	0	593
Sperrin Lakeland	3,047	593	0	0	0	0	0	0	0	3,640
Ulster Community & Hospitals	8,803	2,770	0	0	0	0	0	0	0	11,573
United Hospitals Group	9,210	2,521	1	7	9	2	1	3	3	11,757
Total	80,061	22,398	6	8	9	2	1	3	3	102,491

Source: CH3

Outpatient Waiting Time by Programme of Care

Waiting times for a first outpatient appointment by programme of care are shown in Table 11. The vast majority (94.4%) of patients were awaiting their first outpatient appointment in the Acute Services Programme of Care.

Table 11 Number of Patients Waiting for a First Appointment by Months Waiting and Programme of Care – March 2007

Programme of Care	Patients Waiting for an Appointment by Months Waiting									Total Number
	0 - 2	3 - 5	6 - 8	9 - 11	12 - 14	15 - 17	18 - 20	21 - 23	24 +	
Acute Services	74,983	21,706	6	8	9	2	1	3	3	96,721
Maternity & Child Health	972	3	0	0	0	0	0	0	0	975
Elderly Care	1,455	275	0	0	0	0	0	0	0	1,730
Mental Health	2,611	406	0	0	0	0	0	0	0	3,017
Learning Disability	40	8	0	0	0	0	0	0	0	48
All POCs	80,061	22,398	6	8	9	2	1	3	3	102,491

Source: CH3

Completed Outpatient Waits

Waiting times for completed outpatient waits, for patients treated within Health Service hospitals in Northern Ireland are shown in Table 12. A total of 110,712 patients received a first outpatient appointment within Health Service hospitals (excluding those who had previously cancelled or not attended a previous appointment) during the March 2007 quarter. 61.4% of patients attended their first appointment within 3 months of being placed on the waiting list and 85.4% received their first outpatient appointment within 6 months. Including patients who have cancelled, or not attended a previous appointment, the total number of patients that received a first outpatient appointment within Health Service hospitals in Northern Ireland during the quarter was 121,104.

Table 12 Completed Outpatient Waits for First Appointment⁵

Quarter	Time Waiting in Months									Total Number of Completed Outpatient Waits	
	0 - 2	3 - 5	6 - 8	9 - 11	12 - 14	15 - 17	18 - 20	21 - 23	24 +	Excluding patients who had cancelled or did not attend a previous appointment	Including patients who had cancelled or did not attend a previous appointment
J - M 2004	69.8%	17.1%	5.2%	2.9%	1.7%	1.3%	0.6%	0.4%	1.1%	91,496	99,195
A - J 2004	71.8%	15.9%	5.5%	2.7%	1.7%	0.9%	0.6%	0.3%	0.6%	88,213	95,422
J - S 2004	70.6%	17.9%	5.4%	2.5%	1.4%	0.8%	0.4%	0.3%	0.6%	84,455	92,527
O - D 2004	68.9%	17.3%	7.0%	2.6%	1.4%	0.9%	0.7%	0.4%	0.7%	91,915	99,955
J - D 2004	70.3%	17.1%	5.8%	2.7%	1.6%	1.0%	0.6%	0.3%	0.8%	356,079	387,099
J - M 2005	68.4%	16.4%	7.0%	3.3%	1.7%	1.3%	0.6%	0.4%	0.9%	86,944	94,865
A - J 2005	70.1%	15.6%	6.9%	2.9%	1.9%	0.7%	0.5%	0.3%	1.0%	91,489	99,698
J - S 2005	70.8%	16.0%	5.7%	2.9%	1.7%	1.1%	0.5%	0.4%	0.9%	82,721	92,047
O - D 2005	67.7%	15.9%	7.5%	3.1%	1.9%	1.1%	0.9%	0.6%	1.3%	91,969	101,037
J - D 2005	69.2%	16.0%	6.8%	3.1%	1.8%	1.0%	0.6%	0.4%	1.0%	353,123	387,647
J - M 2006	68.0%	15.6%	7.6%	3.7%	1.4%	1.1%	1.0%	0.6%	1.1%	91,695	101,249
A - J 2006	68.3%	15.0%	7.2%	4.0%	1.7%	0.9%	0.9%	0.8%	1.3%	90,531	99,418
J - S 2006	63.9%	16.0%	7.3%	4.9%	2.7%	1.7%	1.2%	0.8%	1.5%	90,716	100,769
O - D 2006	61.0%	17.8%	9.7%	4.5%	2.6%	1.4%	0.9%	0.6%	1.5%	104,266	113,927
J - D 2006	65.2%	16.2%	8.0%	4.3%	2.1%	1.3%	1.0%	0.7%	1.3%	377,208	415,363
J - M 2007	61.4%	24.0%	8.6%	2.8%	1.1%	0.6%	0.4%	0.3%	0.9%	110,712	121,104

Source: CH4 Part 1

⁵Refer to Technical Notes – points 16 & 17.

Outpatient Completed Waits including Independent Sector Activity– March 2007

During the March 2007 quarter, a number of patients attended a first outpatient appointment, commissioned by the Health Service, within the Independent Sector. Estimates of the number of patients attending a first outpatient appointment, within the Independent Sector have been provided by commissioning Trust

It is estimated that approximately 25,629 Health Service outpatients attended a first outpatient appointment, within the Independent Sector during the quarter ending March 2007. When this number is combined with that for outpatients attending a first appointment in Health Service hospitals during the same period, it is estimated that approximately 146,733 outpatients attended a first appointment in Northern Ireland for an assessment commissioned by the Health Service.

Table 13 Completed Outpatient Waits by Trust including Independent Sector Activity⁶

Provider Trust	Number of Completed Outpatient waits within Health Service Hospitals	Number of Completed Outpatient Waits in Independent Sector	Total Number of Completed Outpatient Waits Commissioned by Health Service
Altnagelvin Group	12,142	1,354	13,496
Armagh & Dungannon	1,401	163	1,564
Belfast City Hospital	12,527	1,202	13,729
Causeway	3,771	962	4,733
Craigavon Area Hospital Group	10,767	1,393	12,160
Craigavon & Banbridge	548	0	548
Down Lisburn	5,290	213	5,503
Foyle	761	0	761
Green Park Healthcare	5,524	4,614	10,138
Homefirst	903	0	903
Mater Infirmorum	4,470	1,010	5,480
Newry & Mourne	5,344	182	5,526
North & West Belfast	201	0	201
Royal Group of Hospitals	22,224	3,240	25,464
South & East	654	0	654
Sperrin Lakeland	10,814	0	10,814
Ulster Community & Hospitals	12,920	8,325	21,245
United Hospitals Group	10,843	2,971	13,814
Total Treated	121,104	25,629	146,733

Source: Health and Social Service Trusts

⁶Refer to Technical Notes – points 17 & 18.

Technical Notes

1. The sources for the data contained in this release are the Information Returns CH1, CH2, CH3 and CH4. These returns collect information from Hospital Trusts on a quarterly basis.
2. Trust based information (CH1, CH2, CH3 and CH4) returns include all patients living outside Northern Ireland and all privately funded patients waiting for treatment in Health Service hospitals. This Trust based information falls within the scope of National Statistics.
3. Patients waiting 6 months and over include all patients in the following time bands: 6-8, 9-11, 12-14, 15-17, 18-20, 21-23 and 24+ months.
4. Waiting time relates to the number of completed months a patient has been waiting (or in the case for completed waits, how long a patient had waited) for either their first outpatient appointment or for inpatient admission. For example, a patient waiting 2 months and 30 days would be included in the 0-2 month category and a patient waiting 3 months and 01 day would be included in the 3-5 month category.
5. Inpatient waiting list data comprises the number of patients waiting for ordinary admission to hospital and the number of patients waiting for day case treatment.
6. Ordinary admissions include both (a) patients admitted electively with the expectation that they will remain in hospital for at least one night, and (b) non-elective admissions (e.g. emergency admissions). A patient who is admitted with either of the above intentions, but who leaves hospital for any reason without staying overnight, is still counted as an ordinary admission. Day cases are not included.
7. Day Cases are patients admitted electively during the course of a day with the intention of receiving care who do not require the use of a hospital bed overnight and who return home as scheduled. If this original intention is not fulfilled and the patient stays overnight, such a patient is counted as an ordinary admission.
8. The waiting list inpatient figures presented include people waiting to be admitted as inpatients either as day cases or ordinary admissions. They do not include:
 - Patients admitted as emergency cases;
 - Outpatients;
 - Patients undergoing a planned programme of treatment e.g. a series of admissions for chemotherapy;
 - Maternity (specialties 510 and 520);
 - Patients already in hospitals but included on other waiting lists;
 - Patients who are temporarily suspended from waiting lists.
9. Waiting time begins from the date the clinician decided to admit the patient. Patients subsequently offered a date but unable to attend have their waiting times calculated from the most recent date offered. These are known as self-deferred cases and are included in the total number waiting.
10. Waiting times for completed inpatient waits relate to the entire time period between the initial decision to admit and the date of admission, excluding periods of suspension.
11. An additional table has (Table 6) been included this quarter to reflect the number of patients that received inpatient treatment, commissioned by the Health Service, in the Independent Sector. These

figures have been provided for each transferring Health Trust (Health Trust responsible for the patients waiting time). They are not governed by National Statistics and they have not been validated by the Department.

12. Outpatients are defined as patients still waiting for their first outpatient appointment at the end of the quarter. An outpatient appointment is to enable a patient to see a consultant, a member of his firm or locum for such a member, in respect of one referral.
13. Outpatient waiting list figures presented do not include maternity specialties 510 and 520.
14. The number of people awaiting an initial outpatient appointment at 31 December 2006 has been revised from 154,555 to 154,607. This is due to an amendment received from Homefirst Community HSS Trust.
15. Following a recent revision in policy, cleared by the Health Minister, patients who either cancel or fail to attend an outpatient appointment have their waiting time reset to either the date on which the appointment was cancelled or the date on which they did not attend the appointment. Outpatient waiting list figures (Departmental Information Return CH3) for September 06, December 06 and March 07 have been updated to reflect this policy change.
16. Waiting times for completed outpatient waits relate to the entire time period between the initial referral and the date the patient attended their first outpatient appointment.
17. Due to reasons beyond the control of the Trust, United Hospitals HSS Trust has been unable to produce CH4 data for all quarters between March 2001 and March 2007. This Trust has provided estimated totals for these quarters and estimates for each time band have been calculated. These new estimates for the missing data for the United Group of Hospitals have been included in the data shown in Table 12. When CH4 data becomes available these estimates will be recast.
18. An additional table has (Table 13) been included this quarter to reflect the number of patients that received an outpatient assessment, commissioned by the Health Service, in the Independent Sector. These figures have been provided for each transferring Health Trust (Trust responsible for the patients waiting time). They are not governed by National Statistics and they have not been validated by the Department.
19. Department of Health, Social Services and Public Safety policy is to publish revised figures with subsequent statistical releases unless it is decided that the magnitude of the change merits earlier notification.
20. Figures relating to the quarter ending 30th June 2007 will be released on Thursday, 6th September 2007.
21. For general enquiries about National Statistics, contact the National Statistics Public Service on

020 7533 5888

minicom: 01633 812399

E-mail: info@statistics.gov.uk

Fax: 01633 652747

Letters: room DG/18, Drummond Gate,
LONDON SW1V 2QQ

You can also find National Statistics on the internet – Go to www.statistics.gov.uk.

Additional Information

Further information on waiting lists in Northern Ireland is available from:

Office Information Manager
Hospital Information Branch
Department of Health, Social Services and Public Safety
Annexe 2
Castle Buildings
Stormont
BT4 3SQ

E-mail: statistics@dhsspsni.gov.uk

Internet address: http://www.dhsspsni.gov.uk/stats-hospital_community_statistics#waiting