
Children Order Statistical Bulletin 2007

Reader Information

Document Purpose	For information
Authors	Dr E. Mooney, Manny Fitzpatrick, Ruth Hewitt
Publication Date	June 2008
Target Audience	Social Services Directors, Directors of Children's services, Chief Executives of HSS Boards and Trusts in Northern Ireland, health care professionals, academics and social care stakeholders.
Further copies from	cib@dhsspsni.gov.uk
Copyright	This publication is Crown copyright and may be reproduced free of charge in any format or medium. Any material used must be acknowledged, and the title of the publication specified.
Internet address	www.dhsspsni.gov.uk/index/stats_research/stats-cib/stats-cib_pubs/stats-cib-children_order_bulletin.htm
Price	Free
Note	This bulletin has been updated to include information based on the LA2 Children Order return for 2006/07, which was not fully validated when the first edition of this bulletin was released in February 2007

About Community Information Branch

The purpose of Community Information Branch is to promote effective decision making in children and adult social services by providing quality information and analysis. We collect, analyse, and disseminate a wide range of community information that is used to help monitor the delivery of personal social services policy. Information collected by CIB is used to assess HSC Trust performance, for corporate monitoring, policy evaluation, and to respond to parliamentary / assembly questions. Information is widely disseminated through a number of regular key statistical publications and ad hoc reports details of which are available by clicking on the link below.

http://www.dhsspsni.gov.uk/index/stats_research/stats-cib/stats-cib_pubs.htm

Our Vision and Values

Community Information Branch aims to:

- Provide up-to-date, quality information on children and adult social services and community health;
- to disseminate findings widely with a view to stimulating debate, promoting effective decision-making and improvement in service provision; and
- be an expert voice on social care information

Main Findings

Child Protection

- At 31 March 2007, there were 1,805 children on the child protection register, an increase of 166 (10%) from the same date in 2006.
- For the year ending 31 March 2007, Northern Ireland had 42 children per 10-000 population aged under 18 on the child protection register; compared with 36 for Wales, and 25 for both England and Scotland.
- During 2006/07 2,320 child protection investigations were completed, 191 (9.0%) more than in 2005/06.
- Between 2001/02 and 2006/07, child protection registrations increased by 21% (225), from 1,080 to 1,305 respectively.
- Just under 32% (569) of children on the register in 2007, were assessed to be at risk of Neglect (only), with 19.8% (357) at risk of Physical Abuse (only), 12.5% (226) at risk of Emotional Abuse (only), 21.5% (225) at risk of Sexual Abuse (only) and 23.7% (428) at risk of several forms of abuse.

Looked After Children¹

- During the year ending 31 March 2007, the number of looked after children in Northern Ireland fell by 3.2% (80), from 2,436 to 2,356.
- At 54.5 and 54.6 respectively, in 2007, Northern Ireland and England had almost identical numbers of looked after children per 10-000 population aged under 18. Equivalent figures were notably higher for Scotland (131.0) and Wales (72.4).
- Just under 60% (1,389) of looked after children were in foster care at 31 March 2007, with 24% (566) placed in residential care, 12% (283) in residential accommodation and 5.1% placed in 'other' types of accommodation.
- Over 80% (576) of all respite care placements in 2006/07, were with foster carers.
- Just over 44% (391) of all care leavers in 2006/07, had been in care for 1 year or

longer, compared with 33% (number) that were discharged after less than 2 weeks in care.

Day Care

- At 31 March 2007, there were 274 registered day care nurseries in Northern Ireland, providing 10,671 day care places for children aged under 5.
- Between 2002 and 2007, the number of day nurseries increased by one third (68), from 206 to 274 respectively; with a corresponding increase of 49% (3,515) in the numbers of day care places, which rose from 7,156 to 10,671.
- At 31 March 2007 there were 3,441 registered childminders in Northern Ireland, providing child care for up to 16,908 children aged under 12; with an average of just below 5 children per childminder. In the previous year there were 3,627 registered childminders providing 17,100 child care places.
- There were 547 playgroups registered in Northern Ireland at 31 March 2007, providing 13,015 day care places mostly for children aged 3-4; giving an average of 24 places per playgroup.
- At 31 March 2007, 266 out of school clubs provided 6,320 day care places for children aged 4-11 years, with an average weekly attendance of 4,991 per operating week.

Children's Homes

- At 30 September 2007, there were 59 children's homes registered with the Regulation and Quality Improvement Authority in Northern Ireland; of these, 45 were statutory and 14 were independent children's homes.
- The 59 children's homes provided accommodation for a maximum of 403 children at any given time.

Secure Accommodation

- There is one secure unit for children in Northern Ireland, providing accommodation to a maximum of 15 children at any one time.
- During 2006/07, there were 53 admissions to and 41 discharges from secure accommodation.

¹ As some Trusts inappropriately classified placement information, data relating to LA2 for 2006/07 will be updated at the earliest opportunity.

Contents

Section 1: Child Protection		Page
1.1	Child protection investigations completed during year ended 31 March (2002 – 2007)	5
1.2	Composition of the child protection register by age and gender at 31 March 2007	6
	<i>Figure 1.1: Composition of the child protection register by age at 31 March 2007</i>	7
1.3	Composition of the child protection register by age at 31 March (2002 – 2007)	7
1.4	Composition of the child protection register by category of abuse at 31 March 2007	8
	<i>Figure 1.2: Composition of the child protection register by category of abuse at 31 March (2003 – 2007)</i>	9
1.5	Composition of the child protection register by category of abuse at 31 March (2003 – 2007)	10
1.6	Composition of the child protection register by length of time on the register and age at 31 March 2007	11
	<i>Figure 1.3: Length of time on the child protection register at 31 March 2007</i>	11
1.7	Composition of the child protection register by length of time on the register at 31 March (2003 – 2007)	12
1.8	Child protection registrations by age and gender during year ended 31 March 2007	13
	<i>Figure 1.4: Child protection registrations by age during year ended 31 March 2007</i>	13
1.9	Child protection registrations by age during year ended 31 March (2002 – 2007)	14
	<i>Figure 1.5: Child protection registrations during year ended 31 March (2002 – 2007)</i>	14
Section 2: Looked After Children		
2.1	Composition of looked after children population by age and gender at 31 March 2007	15
	<i>Figure 2.1: Composition of looked after children population by age at 31 March 2007</i>	16
2.2	Composition of looked after children population by age at 31 March (2002 – 2007)	16
2.3	Composition of looked after children population by gender and legal status at 31 March 2007	17
	<i>Figure 2.2: Legal status of looked after children population at 31 March 2007</i>	17
2.4	Legal status of looked after children population at 31 March (2002 – 2007)	18
2.5	Placement of looked after children at 31 March (2002 – 2007)	19
	<i>Figure 2.3: Placement of looked after children at 31 March 2007</i>	19
2.6	Length of time in care by age at 31 March 2007	20
	<i>Figure 2.4: Length of time in care at 31 March 2007</i>	20
2.7	Length of time in care at 31 March (2002 – 2007)	21
2.8	Respite care by placement type and age during year ended 31 March 2007	22
	<i>Figure 2.5: Children who received respite care services by placement type during year ending 31 March 2007</i>	23
2.9	Children who received respite care services by placement type for years ending 31 March (2002 – 2007)	23

2.10	Discharges from care by length of time in care and age during year ended 31 March 2007	24
------	----------------------------------------------------------------------------------------	----

Section 3: Day Care

3.1	Day nurseries provision for children under 5 at 31 March 2007	25
3.2	Day nurseries provision for children under 5 at 31 March (2002 – 2007)	26
3.3	Registered childminders and childminding places available at 31 March 2007	27
3.4	Childminding places available at 31 March (2003 – 2007)	28
3.5	Registered playgroups and places available at 31 March 2007	29
3.6	Registered playgroups and places available at 31 March (2002 – 2007)	30
3.7	Out of school clubs for children aged 4-11 at 31 March 2007	31
3.8	Out of school clubs for children aged 4-11 at 31 March (2002 – 2007)	32

Section 4: Children's Homes

4.1	Children's statutory residential homes at 31 March 2007	33
	<i>Figure 4.1: Places in children's statutory residential homes by Board at 31 March 2007</i>	34
4.2	Children's independent residential homes at 31 March 2007	34

Section 5: Secure Accommodation

5.1	Admissions into secure accommodation by age and gender (2006/07)	35
	<i>Figure 5.1: Admissions into secure accommodation by age and gender (2006/07)</i>	35
5.2	Discharges from secure accommodation by gender and duration in care (2006/07)	36
	<i>Figure 5.2: Discharges from secure accommodation by gender and duration (2006/07)</i>	36

Section 6: Comparative Data

6.1	Child protection register – UK comparative data (2006/07)	37
	<i>Figure 6.1: Children on child protection register – UK comparative data (2003 - 2007)</i>	37
6.2	Child protection register by category of abuse – UK comparative data (2006/07)	38
	<i>Figure 6.2: Percentage of children on child protection register by category of abuse – UK comparative data (2006/07)</i>	38
6.3	Looked after children – UK comparative data over 5 years	39
6.4	Looked after children by placement – UK comparative data (2006/07)	39
	<i>Figure 6.3: Percentage of looked after children by placement – UK comparative data (2006/07)</i>	40

Child Protection

Child Protection Investigations

Child protection investigations are classified using one of the following categories:

- Joint Protocol⁽¹⁾
- Social Workers
- PSNI

Table 1.1: Child protection investigations completed during year ended 31 March (2002–2007)

Investigation category	2002		2003		2004		2005		2006		2007	
	No.	%	No.	%	No.	%	No.	%	No.	%	No.	%
Joint protocol	441	19.4	417	19.4	391	20.3	381	19.1	293	13.8	316	13.6
Social workers	1,786	78.7	1,696	78.9	1,510	78.3	1,592	79.6	1,811	85.1	1,966	84.7
Police	43	1.9	36	1.7	27	1.4	27	1.4	25	1.2	38	1.6
Total	2,270	100.0	2,149	100.0	1,928	100.0	2,000	100.0	2,129	100.0	2,320	100.0

Main Points

- During 2006/07, 2,320 child protection investigations were completed, 191 (9.0%) more than in 2005/06.
- Compared with 2001/02, the proportion of child protection investigations completed under joint protocol fell from 19.4% (441) to 13.6% (316) in 2006/07.
- Over the same period the proportion of child protection investigations carried out by social workers increased by 6 percentage points, from 78.7% to 84.7% in 2006/07.

¹ Joint Protocol investigations are carried out jointly by Social Workers and the PSNI.

The Child Protection Register

Table 1.2: Composition of the child protection register by age and gender at 31 March 2007

Age (years)	Boys		Girls		Total	
	No.	%	No.	%	No.	%
<1	81	8.5	67	7.9	148	8.2
1-4	240	25.2	209	24.5	449	24.9
5-11	361	37.9	295	34.6	656	36.3
12-15	213	22.4	210	24.6	423	23.4
16 & over	57	6.0	72	8.4	129	7.1
Total	952	100.0	853	100.0	1,805	100.0

Main Points

- At 31 March 2007, there were 1,805 children on the child protection register.
- Of these children on the register, 952 (53%) were boys and 853 (47%) were girls.
- Eight percent of children on the register were under 1 year old, with 33% under 5 years old.
- Over 7% of children on the register were aged 16 & over.

Figure 1.1: Composition of the child protection register by age at 31 March 2007

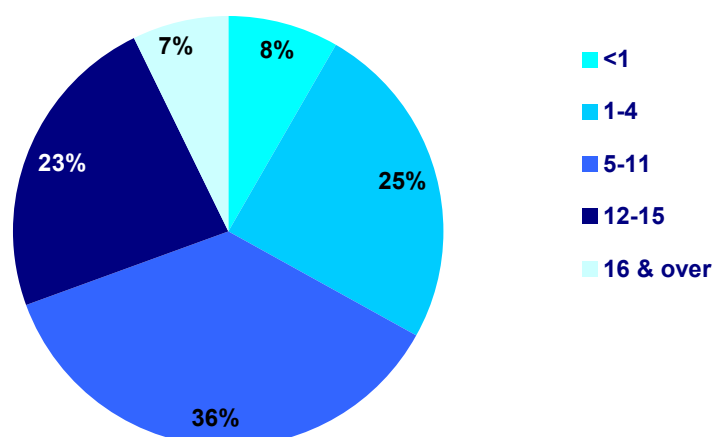


Table 1.3: Composition of the child protection register by age at 31 March (2002–2007)

Age (years)	2002		2003		2004		2005		2006		2007	
	No.	%	No.	%	No.	%	No.	%	No.	%	No.	%
<1	105	6.9	92	5.7	94	6.6	143	9.0	145	8.8	148	8.2
1-4	388	25.3	395	24.6	342	24.1	380	23.9	434	26.5	449	24.9
5-11	630	41.1	682	42.4	600	42.3	644	40.4	623	38.0	656	36.3
12-15	345	22.5	356	22.1	317	22.4	349	21.9	344	21.0	423	23.4
16 & over	63	4.1	83	5.2	64	4.5	77	4.8	93	5.7	129	7.1
Total	1,531	100.0	1,608	100.0	1,417	100.0	1,593	100.0	1,639	100.0	1,805	100.0

Main Points

- Between 2002 and 2007, the number of children on the child protection register increased by 18%, from 1,531 to 1,805 respectively.
- Since 2002, the proportion of children aged 16 & over on the register has increased by 3 percentage points, from 4.1% in 2002 to 7.1% in 2007.

Category of Abuse

The category of abuse under which each child is considered to be at risk is decided at the Child Protection Case Conference. When agreement is reached that the child is at risk and protection is necessary, each child is recorded under the category that best reflects the nature of the risk.

The four main categories used are: neglect, physical abuse, sexual abuse and emotional abuse. For more complex cases mixed categories are used e.g. 'neglect and physical abuse' or 'physical and sexual abuse'.

Neglect:

The actual or likely persistent or severe neglect of a child, or the failure to protect a child from exposure to any kind of danger, including cold and starvation, or persistent failure to carry out important aspects of care, resulting in significant impairment of the child's health or development, including non-organic failure to thrive.

Physical Abuse:

Actual or likely deliberate physical injury to a child, or wilful or neglectful failure to prevent physical injury or suffering to a child including deliberate poisoning, suffocation or Munchausen syndrome by proxy.

Sexual Abuse:

Actual or likely exploitation of children or adolescents. The child may be dependent and/or developmentally immature.

Emotional Abuse:

Actual or likely, persistent or severe emotional ill treatment or rejection resulting in severe adverse effects on the emotional, physical and/or behavioural development of a child. All abuse involves some emotional ill treatment. This category should be used where it is the main or only form of abuse.

Table 1.4: Composition of the child protection register by category of abuse at 31 March 2007

Category of Abuse	Potential	Suspected	Confirmed	Total
Neglect, Physical Abuse and Sexual Abuse				
Main category - neglect	0	2	7	9
Main category - physical abuse	14	2	10	26
Main category - sexual abuse	3	1	1	5
Neglect and Physical Abuse				
Main category - neglect	21	5	43	69
Main category - physical abuse	136	9	31	176
Neglect and Sexual Abuse				
Main category - neglect	3	1	12	16
Main category - sexual abuse	38	5	0	43
Physical Abuse and Sexual Abuse				
Main category - physical abuse	34	2	4	40
Main category - sexual abuse	25	7	12	44
Neglect (only)	314	26	229	569
Physical Abuse (only)	292	16	49	357
Sexual Abuse (only)	169	21	35	225
Emotional Abuse (only)	156	18	52	226
Total	1,205	115	485	1,805
%	66.8	6.4	26.9	100.0

Main Points

- At 31 March 2007, 31.5% (569) of children on the child protection register were assessed to be at risk of Neglect (only), 19.8% (357) at risk of Physical Abuse (only), 12.5% (226) at risk of Emotional Abuse (only), 12.5% (225) at risk of Sexual Abuse (only) and 23.7% (428) at risk of more than one type of abuse.
- Just over two thirds (1,205) of children on the register were assessed as potential cases of abuse, with 26.9% (485) confirmed cases of abuse, and 6.4% (115) cases where abuse was suspected.

Figure 1.2: Composition of the child protection register by category of abuse at 31 March (2003-2007)

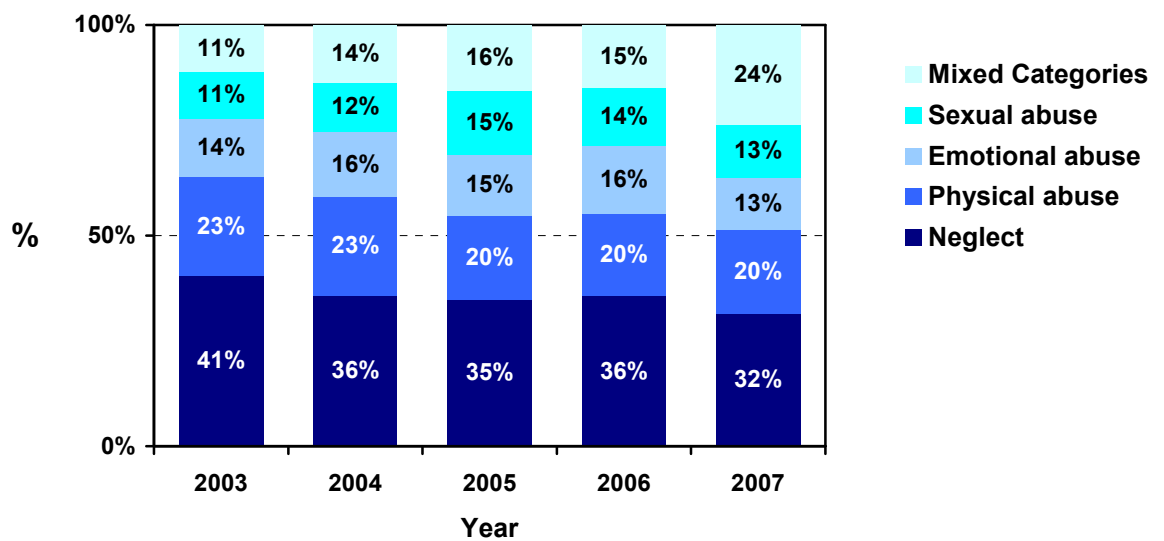


Table 1.5: Composition of the child protection register by category of abuse at 31 March (2003–2007)

Category of Abuse	2003		2004		2005		2006		2007	
	No.	%	No.	%	No.	%	No.	%	No.	%
Neglect, Physical Abuse and Sexual Abuse										
Main category - neglect	6	0.4	1	0.1	4	0.3	5	0.3	9	0.5
Main category - physical abuse	1	0.1	8	0.6	6	0.4	6	0.4	26	1.4
Main category - sexual abuse	2	0.1	2	0.1	5	0.3	7	0.4	5	0.3
Neglect and Physical Abuse										
Main category - neglect	28	1.7	25	1.8	39	2.4	35	2.1	69	3.8
Main category - physical abuse	91	5.7	97	6.8	114	7.2	107	6.5	176	9.8
Neglect and Sexual Abuse										
Main category - neglect	8	0.5	8	0.6	17	1.1	14	0.9	16	0.9
Main category - sexual abuse	15	0.9	22	1.6	32	2.0	32	2.0	43	2.4
Physical Abuse and Sexual Abuse										
Main category - physical abuse	26	1.6	21	1.5	23	1.4	31	1.9	40	2.2
Main category - sexual abuse	2	0.1	10	0.7	7	0.4	8	0.5	44	2.4
Neglect (only)	651	40.5	509	35.9	554	34.8	582	35.5	569	31.5
Physical Abuse (only)	376	23.4	330	23.3	316	19.8	323	19.7	357	19.8
Sexual Abuse (only)	178	11.1	164	11.6	234	14.7	226	13.8	225	12.5
Emotional Abuse (only)	224	13.9	220	15.5	242	15.2	263	16.0	226	12.5
Total	1,608	100.0	1,417	100.0	1,593	100.0	1,639	100.0	1,805	100.0

Main Points

- Between 2003 and 2007, the proportion of children registered under 'Neglect (only)' decreased from 40.5% (651) to 31.5% (569).
- The proportion of children registered under 'Physical Abuse (only)' decreased from 23.4% (376) in 2003 to 19.8% (357) in 2007.
- The number of children registered under mixed categories of abuse increased from 11.1% (179) in 2003 to 23.7% (428) in 2007.

Length of Time on the Child Protection Register

Table 1.6: Composition of the child protection register by length of time on the register and age at 31 March 2007

Time on register	Age (years)											
	<1		1-4		5-11		12-15		16+		Total	
	No.	%	No.	%	No.	%	No.	%	No.	%	No.	%
Less than 3 months	54	36.5	71	15.8	122	18.6	83	19.6	22	17.1	352	19.5
3 months < 6 months	47	31.8	67	14.9	90	13.7	67	15.8	18	14.0	289	16.0
6 months < 1 year	47	31.8	117	26.1	163	24.8	92	21.7	33	25.6	452	25.0
1 year < 2 years	0	0.0	137	30.5	154	23.5	106	25.1	34	26.4	431	23.9
2 years < 3 years	0	0.0	41	9.1	63	9.6	31	7.3	8	6.2	143	7.9
3 years or more	0	0.0	16	3.6	64	9.8	44	10.4	14	10.9	138	7.6
Total	148	100.0	449	100.0	656	100.0	423	100.0	129	100.0	1,805	100.0

Main Points

- At 31 March 2007, 61% of children had been on the register for less than 1 year.
- Just below 8% (138) of children had been on the register for 3 years or more.
- Almost 4 in 10 (712) of children had been on the register for 1 year or more.
- The majority of children (69%) aged 16 & over had been on the register for 6 months or more.

Figure 1.3: Length of time on the child protection register at 31 March 2007

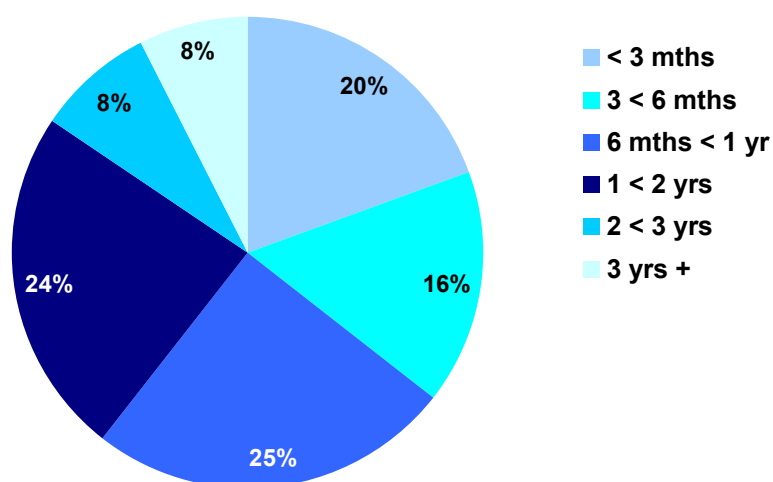


Table 1.7: Composition of the child protection register by length of time on the register at 31 March (2003-2007)

Time on the Register	2003		2004		2005		2006		2007	
	No.	%	No.	%	No.	%	No.	%	No.	%
Less than 3 months	307	19.1	245	17.3	265	16.6	262	16.0	352	19.5
3 months < 6 months	241	15.0	206	14.5	299	18.8	301	18.4	289	16.0
6 months < 1 year	386	24.0	291	20.5	363	22.8	386	23.6	452	25.0
1 year < 2 years	400	24.9	388	27.4	356	22.3	398	24.3	431	23.9
2 years < 3 years	127	7.9	165	11.6	168	10.5	149	9.1	143	7.9
3 years or more	147	9.1	122	8.6	142	8.9	143	8.7	138	7.6
Total	1,608	100.0	1,417	100.0	1,593	100.0	1,639	100.0	1,805	100.0

Main Points

- Between 2003 and 2007, the numbers of children on the register increased by 12%, from 1,608 to 1,805 respectively.
- The proportion of children on the register for less than 3 months has increased by over one third in the past year from 262 (16.0%) in 2006 to 352 (19.5%) in 2007.

Child Protection Registrations

Table 1.8: Child protection registrations by gender and age during the year ended 31 March 2007

Age (years)	Boys		Girls		Total	
	No.	%	No.	%	No.	%
<1	126	18.9	105	16.4	231	17.7
1-4	149	22.4	129	20.2	278	21.3
5-11	238	35.7	208	32.6	446	34.2
12-15	127	19.1	163	25.5	290	22.2
16 & over	26	3.9	34	5.3	60	4.6
Total	666	100.0	639	100.0	1,305	100.0

Main Points

- There were 1,305 registrations on to the child protection register in 2006/07, demonstrating similar proportions of males and females.
- Comparisons of registrations by gender indicate that girls registered during 2006/07 tended to be slightly older than boys, with 31% of girls aged 12 & over compared with 23% of boys.
- Almost two fifths (39%) of registrations were in respect of children aged 4 or younger.

Figure 1.4: Child protection registrations by age during year ended 31 March 2007

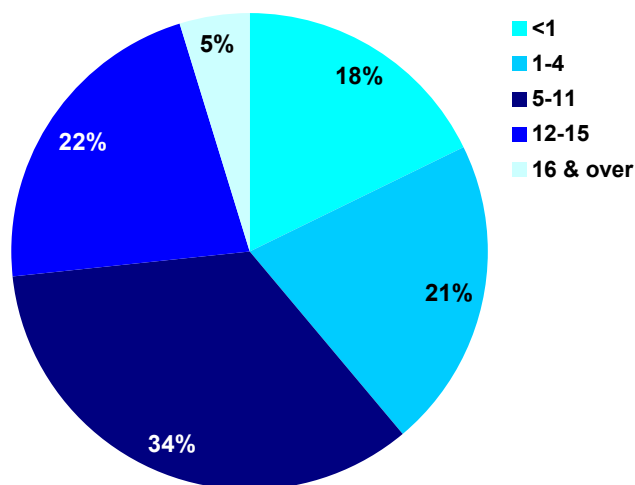


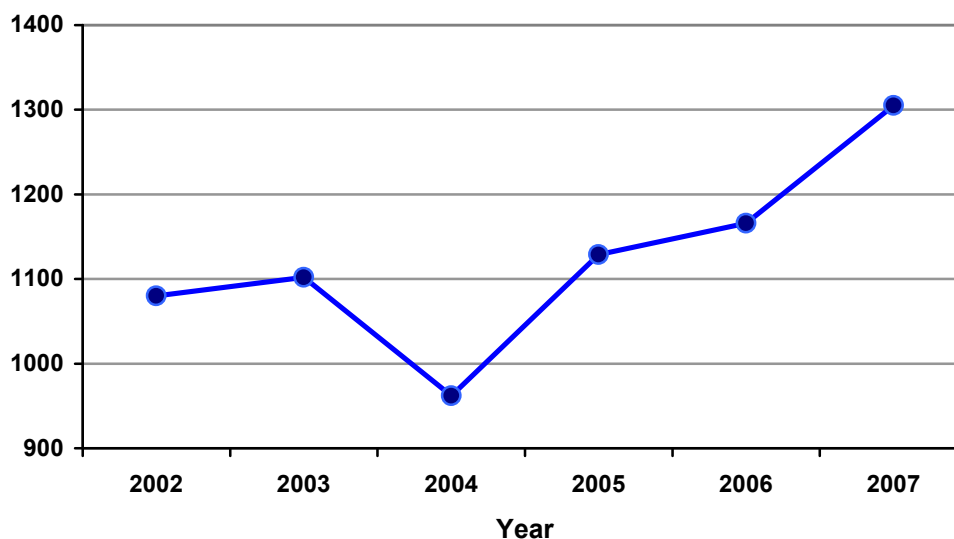
Table 1.9: Child protection registrations by age during year ended 31 March (2002–2007)

Age (years)	2002		2003		2004		2005		2006		2007	
	No.	%	No.	%	No.	%	No.	%	No.	%	No.	%
<1	173	16.0	143	13.0	160	16.6	209	18.5	209	17.9	231	17.7
1-4	259	24.0	279	25.3	237	24.6	238	21.1	287	24.6	278	21.3
5-11	418	38.7	447	40.6	364	37.8	411	36.4	399	34.2	446	34.2
12-15	215	19.9	215	19.5	183	19.0	243	21.5	237	20.3	290	22.2
16 & over	15	1.4	18	1.6	18	1.9	28	2.5	34	2.9	60	4.6
Total	1,080	100.0	1,102	100.0	962	100.0	1,129	100.0	1,166	100.0	1,305	100.0

Main Points

- Between 2001/02 and 2006/07, the number of child protection registrations increased by 21% (225), from 1,080 to 1,305 respectively.
- In 2006/07, four times as many children aged 16 and over were registered on to the child protection register as in 2001/02; which represents an increase of 3.2 percentage points.
- In 2006/07, four times as many children aged 16 and over were

Figure 1.5: Child protection registrations during year ended 31 March (2002–2007)



Looked After Children

A child becomes looked after if they are provided with accommodation for a continuous period of twenty-four hours or more by a HSS Trust in the exercise of its social services function.

Table 2.1: Composition of looked after children population by age and gender at 31 March 2007

Age (years)	Boys		Girls		Total	
	No.	%	No.	%	No.	%
<1	42	3.4	22	2.0	64	2.7
1-4	144	11.6	154	13.8	298	12.6
5-11	414	33.3	351	31.5	765	32.5
12-15	387	31.2	378	33.9	765	32.5
16 & over	255	20.5	209	18.8	464	19.7
Total	1,242	100.0	1,114	100.0	2,356	100.0

Main Points

- At 31 March 2007, there were 2,356 looked after children in Northern Ireland.
- Of those looked after at 31 March 2007, 53% were boys and 47% were girls.
- Of the 2,356 looked after children, 32.5% (765) were aged 5-11, 32.5% (765) were 12-15 years, 19.7% (464) were 16 years & over, and 15.4% (362) were under 5 years old at 31 March 2007.
- At 31 March 2007, 2.7% of looked after children were less than 1 year old.

Figure 2.1: Composition of looked after children population by age at 31 March 2007

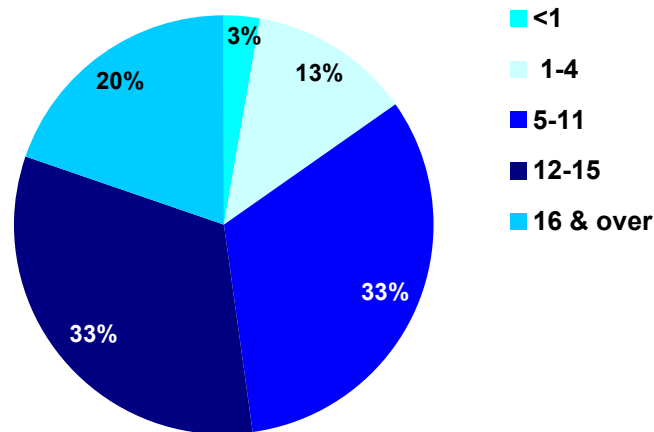


Table 2.2: Composition of looked after children population by age at 31 March (2002–2007)

Age (years)	2002		2003		2004		2005		2006		2007	
	No.	%	No.	%	No.	%	No.	%	No.	%	No.	%
<1	69	2.8	60	2.5	75	3.0	61	2.4	60	2.5	64	2.7
1-4	350	14.3	364	14.9	366	14.6	348	13.7	334	13.7	298	12.6
5-11	865	35.3	872	35.7	881	35.1	869	34.3	830	34.1	765	32.5
12-15	740	30.2	738	30.2	775	30.9	818	32.3	763	31.3	765	32.5
16 & over	429	17.5	412	16.8	413	16.5	435	17.2	449	18.4	464	19.7
Total	2,453	100.0	2,446	100.0	2,510	100.0	2,531	100.0	2,436	100.0	2,356	100.0

Main Points

- There was a 3% decrease in the total number of children looked after in the last year from 2,436 in 2006 to 2,356 in 2007.
- Over the five years from 2002 to 2007 the numbers of children looked after aged between 5 and 11 has dropped by 100 from 865 to 765. This has resulted in the proportion of looked after children aged 5 – 11 falling, to now be the same in 2007 as those aged 12 – 15 (32.5%).

Legal Status of Looked After Children

Table 2.3: Composition of looked after children population by gender and legal status at 31 March 2007

Legal Status	Boys		Girls		Total	
	No.	%	No.	%	No.	%
Emergency Protection Order (Articles 63 & 64)	2	0.2	9	0.8	11	0.5
Accommodated under Article 21	441	35.5	359	32.2	800	34.0
Interim Care Order	119	9.6	99	8.9	218	9.3
Care Order (Articles 50 & 59)	565	45.5	528	47.4	1,093	46.4
Deemed Care Order (Paras 11 & 30)	109	8.8	107	9.6	216	9.2
Other	6	0.5	12	1.1	18	0.8
Total	1,242	100.0	1,114	100.0	2,356	100.0

Main Points

- At 31 March 2007, 46% (1,093) of looked after children were subject to 'Care Orders (Articles 50 & 59)', with a further 9% subject to 'Deemed Care Order (Paras 11 & 30)'. Over one third of children in care were 'Accommodated under Article 21', with less than 1% in care under an 'Emergency Protection Order'.
- Similar proportions of boys and girls were recorded under each legal status category at 31 March 2007.

Figure 2.2: Legal status of looked after children population at 31 March 2007

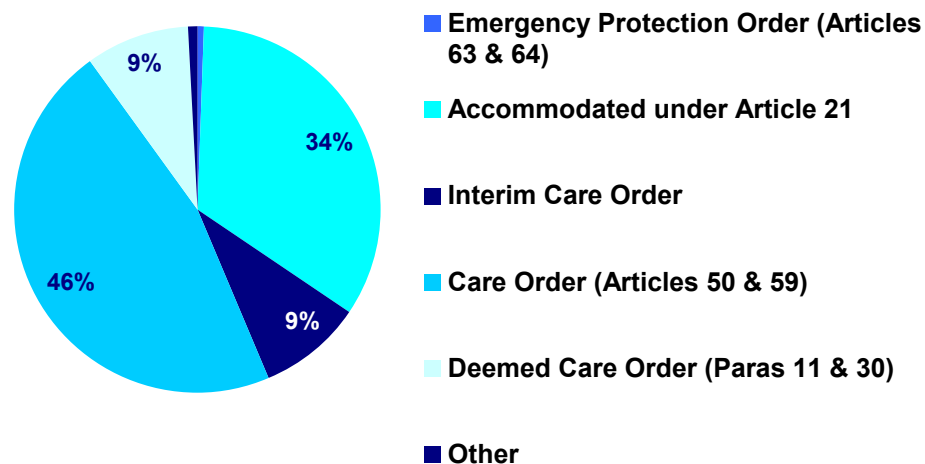


Table 2.4: Legal status of looked after children population at 31 March (2002–2007)

Legal Status	2002		2003		2004		2005		2006		2007	
	No.	%	No.	%	No.	%	No.	%	No.	%	No.	%
Emergency Protection Order (Articles 63 & 64)	24	1.0	20	0.8	32	1.3	15	0.6	13	0.5	11	0.5
Accommodated under Article 21	756	30.8	680	27.8	743	29.6	794	31.4	760	31.2	800	34.0
Interim Care Order	262	10.7	327	13.4	329	13.1	325	12.8	302	12.4	218	9.3
Care Order (Articles 50 & 59)	652	26.6	799	32.7	918	36.6	1,013	40.0	1,066	43.8	1,093	46.4
Deemed Care Order (Paras 11 & 30)	720	29.4	569	23.3	441	17.6	357	14.1	278	11.4	216	9.2
Freed for Adoption and Looked After by Board/Trust	20	0.8	40	1.6	23	0.9	11	0.4	0	0.0	0	0.0
Other	19	0.8	11	0.4	24	1.0	16	0.6	17	0.7	18	0.8
Total	2,453	100.0	2,446	100.0	2,510	100.0	2,531	100.0	2,436	100.0	2,356	100.0

Main Points

- Over the five years from 2002 to 2007, the number of looked after children subject to 'Care Orders (Articles 50 & 59)' rose by over two thirds from 652 (26.6%) in 2002 to 1,093 (46.4%) in 2007.
- In contrast, the proportion of looked after children subject to 'Deemed Care Order (Paras 11 & 30)' decreased from 29.4% (720) to 9.2% (216) over the same period.
- The proportion of looked after children 'Accommodated under Article 21' increased by over 3 percentage points from 30.8% (756) to 34.0% (800) in 2007.
- Children taken into care under an 'Emergency Protection Order (Articles 63 & 64)' have fallen from 1.0% in 2002 to 0.5% of the looked after children population in 2007.

Placement of Looked After Children ⁽¹⁾

Children taken into care can be placed in:

- Residential care;
- Foster care;
- With family; or
- Other accommodation ⁽²⁾.

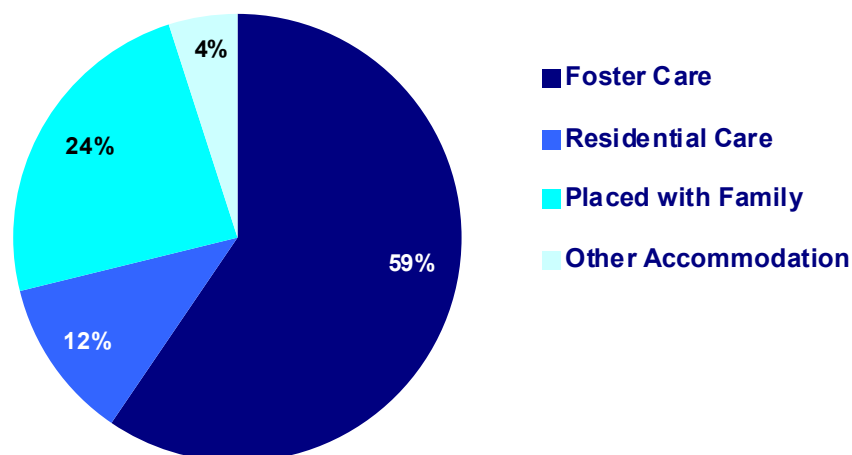
Table 2.5: Placement of looked after children at 31 March (2002–2007)

Placement Type	2002		2003		2004		2005		2006 ⁽³⁾		2007	
	No.	%	No.	%	No.	%	No.	%	No.	%	No.	%
Residential Care	299	12.2	296	12.1	325	12.9	317	12.5	321	13.2	283	12.0
Foster Care	1,513	61.7	1,577	64.5	1,529	60.9	1,606	63.4	1,522	62.5	1,389	58.9
Placed with Family	534	21.8	494	20.2	561	22.4	500	19.8	486	20.0	566	24.0
Other Accommodation ⁽¹⁾	107	4.4	79	3.2	95	3.8	108	4.3	107	4.4	118	5.1
Total	2,453	100	2,446	100	2,510	100	2,531	100	2,436	100	2,356	100

Main Points

- Just under 60% (1,389) of looked after children were in foster care at 31 March 2007, with 24.0% (566) placed with family, 12.0%(283) in residential accommodation, and 5.1%(118) placed in 'other' types of accommodation.
- From 2006 to 2007, the proportion of children placed with family increased from 20.0% to 24.0%, compared with a drop from 62.5% to 58.9% in the proportion placed in foster care.

Figure 2.3: Placement of looked after children at 31 March 2007 ⁽³⁾



¹ This section has been updated with information based on the LA2 Children Order return 2006/07, which was not fully validated when the first edition of this bulletin was released in February 2008.

² Other accommodation includes special schools, hospitals, bed sits, independent living etc.

³ At least one Trust inappropriately classified some children placed in foster care as placed with family. Care needs to be exercised when using these figures.

Length of Time in Care

Table 2.6: Length of time in care by age at 31 March 2007

Time in care	Age (years)											
	< 1		1-4		5-11		12-15		16 & over		Total	
	No.	%	No.	%	No.	%	No.	%	No.	%	No.	%
Under 2 weeks	3	4.7	9	3.0	12	1.6	11	1.4	3	0.6	38	1.6
2 weeks < 3 mths	15	23.4	18	6.0	24	3.1	21	2.7	17	3.7	95	4.0
3 mths < 6 mths	20	31.3	16	5.4	40	5.2	41	5.4	9	1.9	126	5.3
6 mths < 1 yr	26	40.6	49	16.4	63	8.2	52	6.8	21	4.5	211	9.0
1 yr < 2 yrs	0	0.0	94	31.5	85	11.1	71	9.3	42	9.1	292	12.4
2yrs < 3 yrs	0	0.0	62	20.8	105	13.7	87	11.4	49	10.6	303	12.9
3yrs or more	0	0.0	50	16.8	436	57.0	482	63.0	323	69.6	1,291	54.8
Total	64	100.0	298	100.0	765	100.0	765	100.0	464	100.0	2,356	100.0

Main Points

- At 31 March 2007, over half (54.8%) of looked after children had been in care for 3 years or more, with 80% in care for 1 year or longer.
- Approximately 1 in 5 (20%) of the looked after children had been in care for less than 1 year.
- Older children (16 years & over) were less likely than younger children to have spent shorter periods of time (less than 6 months) in care.
- Almost three quarters (72%) of looked after children under 1 year old had been in care for more than 3 months.

Figure 2.4: Length of time in care at 31 March 2007

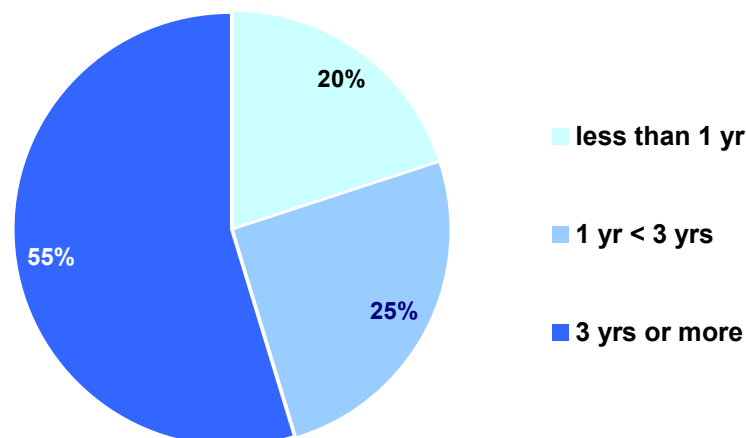


Table 2.7: Length of time in care at 31 March (2002–2007)

Length of time in care	2002		2003		2004		2005		2006		2007	
	No.	%	No.	%	No.	%	No.	%	No.	%	No.	%
Under 2 weeks	33	1.3	30	1.2	21	0.8	19	0.8	19	0.8	38	1.6
2 weeks < 3 mths	121	4.9	118	4.8	120	4.8	150	5.9	107	4.4	95	4.0
3 mths < 6 mths	115	4.7	139	5.7	121	4.8	121	4.8	107	4.4	126	5.3
6 mths < 1 yr	294	12.0	243	9.9	279	11.1	229	9.0	193	7.9	211	9.0
1 yr < 2 yrs	324	13.2	406	16.6	391	15.6	401	15.8	402	16.5	292	12.4
2yrs < 3 yrs	293	11.9	252	10.3	351	14.0	316	12.5	315	12.9	303	12.9
3yrs or more	1,273	51.9	1,258	51.4	1,227	48.9	1,295	51.2	1,293	53.1	1,291	54.8
Total	2,453	100.0	2,446	100.0	2,510	100.0	2,531	100.0	2,436	100.0	2,356	100.0

Main Points

- Between 2002 and 2007, the proportion of children in care for 3 years or more has risen by almost 3 percentage points from 51.9% in 2002 to 54.8% in 2007.
- During this period, the number of placements that lasted less than 6 months and 1 year decreased by 28% from 294 (12%) in 2002 to 211 (9%) in 2007.

Respite Care

Respite care relates to a series of short-term, pre-planned or ad-hoc placements when a child moves temporarily from his/her carer (i.e. foster care, residential care or with family etc), to allow the child and the carer to spend some time away from each other. The respite move could involve a change in placement type (i.e. foster care to residential care) or the child may remain in the same placement type (i.e. foster care to foster care). Children may also move from a family placement to other placement types. The use of respite care varies across Trusts. Some Trusts make considerable use of short-term respite care, aimed at maintaining a child in a family placement. Other Trusts use respite care on a more limited basis.

Table 2.8: Respite care by placement type and age during year ended 31 March 2007

Placement Type	Age (years)										Total	
	< 1		1-4		5-11		12-15		16+			
	No.	%	No.	%	No.	%	No.	%	No.	%	No.	%
Residential Care	0	0.0	0	0.0	22	7.9	34	15.8	14	16.5	70	9.8
Foster Care	27	96.4	101	95.3	237	84.6	157	73.0	54	63.5	576	80.7
Placed with Family	1	3.6	5	4.7	13	4.6	17	7.9	7	8.2	43	6.0
Other Accommodation ⁽¹⁾	0	0.0	0	0.0	8	2.9	7	3.3	10	11.8	25	3.5
Total	28	100.0	106	100.0	280	100.0	215	100.0	85	100.0	714	100.0

Main Points

- Of the 714 children who received respite care, 81% (576) were foster care placements, 10% (70) were residential care placements, 6% (43) were placed with family, and 4% (25) were placed in 'Other Accommodation'.
- Children under 5 years old were more likely than older children to receive a foster care placement.
- Almost 70% (495) of children who received respite care in 2006/07 were aged 5-15 years, with 19% under 5 years old and 12% aged 16 or older.

¹ Other accommodation can include special schools, hospitals, bed sits, independent living etc.

Figure 2.5: Children who received respite care services by placement type during year ending 31 March 2007

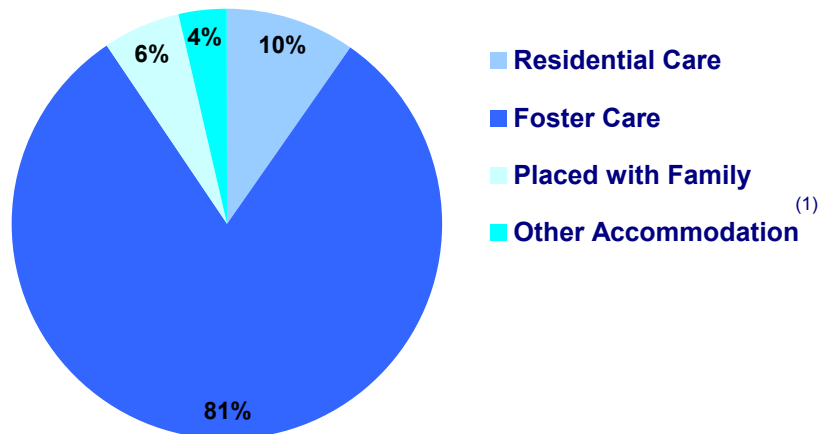


Table 2.9: Children who received respite care services by placement type for years ending 31 March (2002-2007)

Placement Type	2002		2003		2004		2005		2006		2006	
	No.	%	No.	%	No.	%	No.	%	No.	%	No.	%
Residential Care	175	20.6	162	19.1	179	20.9	174	17.7	75	9.6	70	9.8
Foster Care	531	62.4	523	61.6	525	61.2	595	60.5	613	78.1	576	80.7
Placed with Family	130	15.3	130	15.3	113	13.2	158	16.1	55	7.0	43	6.0
Other Accommodation ⁽¹⁾	15	1.8	34	4.0	41	4.8	56	5.7	42	5.4	25	3.5
Total	851	100.0	849	100.0	858	100.0	983	100.0	785	100.0	714	100.0

Main Points

- Since 2001/02, the proportion of children accommodated for respite care in foster accommodation increased from 62.4% to 80.7% in 2006/07.
- During this period, the number of children accommodated for respite care in residential accommodation decreased from 175 in 2001/02 to 70 in 2006/07.
- The proportion of children placed with family for respite care decreased from 15.3% to 6.0% in 2006/07.

¹ Other accommodation can include special schools, hospitals, bed sits, independent living etc.

Discharges from Care

Table 2.10: Discharges from care by length of time in care and age during year ended 31 March 2007¹

Time in care	Age (years)											
	< 1		1-4		5-11		12-15		16 & over		Total	
	No.	%	No.	%	No.	%	No.	%	No.	%	No.	%
Under 2 weeks	11	50.0	94	43.3	80	35.9	58	36.9	49	18.1	292	32.8
2 weeks < 3 mths	5	22.7	11	5.1	7	3.1	29	18.5	4	1.5	56	6.3
3 mths < 6 mths	3	13.6	11	5.1	5	2.2	19	12.1	14	5.2	52	5.8
6 mths < 1 yr	3	13.6	21	9.7	31	13.9	19	12.1	18	6.7	92	10.3
1 yr < 2 yrs	0	0.0	37	17.1	31	13.9	11	7.0	24	8.9	103	11.6
2yrs < 3 yrs	0	0.0	23	10.6	17	7.6	7	4.5	15	5.6	62	7.0
3yrs or more	0	0.0	20	9.2	52	23.3	14	8.9	146	54.1	232	26.1
Total	22	100.0	217	100.0	223	100.0	157	100.0	270	100.0	889	100.0

Main Points

- During 2006/07, there were 889 discharges from care.
- Just over 44% of discharges from care in 2006/07 related to children who had been in care for 1 year or longer, with 33% relating to children who had been in care for less than 2 weeks.
- Over half of the children aged 16 and over discharged from care had been in care for 3 years or more.

¹ As some children were discharged more than once during 2006/07, the information on discharges is not a count of the numbers of children discharged from care during this period

Children's Day Care

Day care facilities for children include childminders, playgroups, day nurseries and out of school clubs. These facilities are available mainly through independent providers. The majority of day care services are provided through the independent sector – either through voluntary organisations, private companies or individuals operating a business, community groups as a co-operative enterprise or any of these bodies on a partnership basis. Children may attend day care on a full or part-time basis depending on their needs and those of their parents.

Day Nurseries

Table 3.1: Day nurseries provision for children under 5 at 31 March 2007

Providers	Number of Day Nurseries	Number of Registered Places
Voluntary Agencies	31	1,018
Private Organisations (including employer)	212	8,508
Other Organisations	31	1,145
Total	274	10,671

Main Points

- At 31 March 2007, there were 274 day nurseries in Northern Ireland, providing 10,671 registered places for children under 5 years old.
- Almost 8 in 10 (8,058) registered places in day nurseries were provided by the private sector, including employers.

Table 3.2: Day nurseries provision for children under 5 at 31 March (2002–2007)

Service Provider	2002		2003		2004		2005		2006		2007	
	No. of Day Nurseries	No. of Registered Places	No. of Day Nurseries	No. of Registered Places	No. of Day Nurseries	No. of Registered Places	No. of Day Nurseries	No. of Registered Places	No. of Day Nurseries	No. of Registered Places	No. of Day Nurseries	No. of Registered Places
Voluntary Agencies	15	528	18	587	21	697	26	803	29	978	31	1,018
Private Organisations (including employer)	164	6,138	163	6,633	181	7,084	189	7,642	202	8,179	212	8,508
Other Organisations	27	490	16	578	24	643	30	752	35	1,027	31	1,145
Total	206	7,156	197	7,798	226	8,424	245	9,197	266	10,184	274	10,671

Main Points

- Since 2002, the number of day nurseries providing places for children under 5 increased by one third (68), from 206 in 2002 to 274 in 2007.
- During this period the numbers of registered places increased by 49%, from 7,156 to 10,671 in 2007.
- Between 2002 and 2007, the relative provision of places by the private sector fell from 86% to 80% respectively; however the proportional increase in provision by 'Other Organisations' went up to 11% from 7%.
- The number of day nurseries provided by private organisations increased steadily from 164 in 2002 to 212 in 2007, with a corresponding increase of 2,370 registered places in day nurseries for children under 5 years old.

Childminders

Childminders can care for both children under 5 years old and children of school age outside normal school hours, or during holidays in domestic premises, usually the childminder's home. Childminders can offer these services all year round for the full adult working day. Parents and childminders usually negotiate the terms and conditions.

Table 3.3: Registered childminders and childminding places available at 31 March 2007

Childminders/Places	No. of Childminders	No. of Childminding Places	Childminding Places for children under 5	
			Number	%
Registered	3,441	16,908	9,482	56.1
Of which:				
Sponsored	188	812	461	56.8

Main Points

- At 31 March 2007, 3,441 childminders were registered with local HSS Trusts, providing a total of 16,908 childminding places for children under 12 years of age, with an average of just below 5 children per childminder.
- Of the 16,908 available childminding places for children under 12, over half (9,482) were designated for children less than 5 years old.
- Local HSS Trusts sponsored almost 5% (812) of available childminding places.

Table 3.4: Childminding places available at 31 March (2003–2007)

Places	2003			2004			2005			2006			2007		
	No. of Places	Places for under 5s	% of places for under 5s	No. of Places	Places for under 5s	% of places for under 5s	No. of Places	Places for under 5s	% of places for under 5s	No. of Places	Places for under 5s	% of places for under 5s	No. of Places	Places for under 5s	% of places for under 5s
Registered	21,164	12,015	56.8	19,714	11,009	55.8	18,065	10,174	56.3	17,100	9,468	55.4	16,908	9,482	56.1
Of which:															
Sponsored	689	405	58.8	719	433	60.2	865	493	57.0	785	423	53.9	812	461	56.8

Main Points

- Between 2003 and 2007, the number of childminding places for children under 12 decreased by 20% (4,256), from 21,164 in 2003 to 16,908 in 2007.
- This compared with a decrease of 2,533 (21%) in the numbers of childminding places available for children under 5 years old.
- From 2003 to 2007, the proportion of available childminding places for children under 12 sponsored by local HSS Trusts increased from 3% (689) to 5% (812) respectively, an increase of 18% (123) in the actual number of places sponsored by HSS Trusts.

Playgroups

Playgroups provide session care for children aged between 3 and 5 years of age, though exceptionally some providers may take slightly younger children. Playgroups aim to provide learning experiences to young children through structured play opportunities in groups, and with the involvement of the parents in all aspects of the operation of the group.

Most playgroups are run on a self-help basis by groups of parents with one or two paid staff. Some playgroups may be run by Trusts or voluntary organisations e.g. NSPCC (National Society for the Prevention of Cruelty to Children). Some are called opportunity groups and cater specifically for children with special needs. Playgroup sessions usually last no longer than 4 hours.

Table 3.5: Registered playgroups and places available at 31 March 2007

Playgroup Providers	Number of Playgroups	Number of Places
HSS Trusts	4	106
Voluntary Agencies	14	276
Community / Local Committees	476	11,529
Private Provision	53	1,104
Total	547	13,015

Main Points

- At 31 March 2007, 547 playgroups provided 13,015 places, giving an average of 24 places per playgroup.
- Almost 9 in 10 places available in playgroups were provided through community and/or local committees, with 8% (1,104) provided by the private sector, 2% (276) through voluntary agencies, and 1% (106) provided by local HSS Trusts.

Table 3.6: Registered playgroups and places available at 31 March (2002–2007)

Playgroup Providers	2002		2003		2004		2005		2006		2007	
	No. of Play groups	Places	No. of Play groups	Places	No. of Play groups	Places	No. of Play groups	Places	No. of Play groups	Places	No. of Play groups	Places
HSS Trusts	6	145	5	130	4	106	4	94	5	107	4	106
Voluntary Agencies	35	988	14	363	18	391	18	421	16	381	14	276
Community / Local Committees	507	12,156	512	12,555	496	12,142	504	11,910	491	11,373	476	11,529
Private Provision	91	1,743	76	1,600	90	1,590	58	1,345	48	1,075	53	1,104
Total	639	15,032	607	14,648	608	14,229	584	13,770	560	12,936	547	13,015

Main Points

- Between 2002 and 2007, the number of registered playgroups decreased by 14%, from 639 in 2002 to 547 in 2007.
- Provision of playgroups has fallen in each sector, particularly in voluntary agencies from 35 to 14 playgroups, a fall of 60%, and in private facilities which have seen a 42% decrease from 91 in 2002 to 53 in 2007.
- This produced a corresponding drop of 72% in the number of places provided by voluntary agencies and a 37% drop in the private facilities.
- In the largest sector provider (Community/Local Committees) the number of playgroups has dropped by 31 over the last five years resulting in a 5% drop in the numbers of places available for children.

Out of School Clubs

Out of school clubs provide care for school aged children, usually lasting from the end of the normal school day until collected by the parent/carer. Some clubs also care for children before school begins. Out of school clubs are not open access. They may be run by HSS Trusts, voluntary organisations or community groups/local committees, or privately.

Table 3.7: Out of school clubs for children aged 4-11 at 31 March 2007

Providers	Clubs	Places available	Average attendances per operating week
HSS Trusts	22	523	1,377
District Councils	4	88	86
Voluntary Organisations	90	2,210	791
Other Organisations	150	3,499	2,737
Total	266	6,320	4,991

Main Points

- At 31 March 2007, there were 266 out of school clubs providing 6,320 places for children aged 4-11 years, with an average weekly attendance of 4,991 per operating week.
- 9 in 10 (240) out of school clubs were provided by voluntary or other organisations, the remainder by HSS Trusts or District Councils.

Table 3.8: Out of school clubs for children aged 4-11 at 31 March (2002–2007)

Providers	2002		2003		2004		2005		2006		2007	
	Clubs	Places	Clubs	Places	Clubs	Places	Clubs	Places	Clubs	Places	Clubs	Places
HSS Trusts	10	204	14	332	13	320	15	353	20	479	22	523
District Councils	7	130	3	72	4	96	4	96	6	106	4	88
Voluntary Organisations	86	1,862	90	1,986	116	2,584	107	2,477	78	1,976	90	2,210
Other Organisations	102	2,322	105	2,383	117	2,572	133	3,362	155	3,715	150	3,499
Total	205	4,518	212	4,773	250	5,572	259	6,288	259	6,276	266	6,320

Main Points

- From 2002 to 2007, the numbers of out of school clubs increased by 30%, from 205 to 266 respectively.
- In 2007, there were 40% more places in out of school clubs (6,320) than in 2002 (4,518).
- Out of school club provision by HSS Trusts rose from 10 to 22 clubs from 2002 to 2007, with a corresponding increase of 319 in the numbers of places available.
- In addition, the number of clubs provided by other organisations rose by 47%, with the numbers of places increasing by 1,177 from 2002 to 2007.

Children's Residential Homes

Children's residential homes provide care and accommodation for children in accordance with Part IX of the Children Order (Northern Ireland) 1995.

At 30 September 2007, there were 59 residential homes for children: 45 statutory and 14 independent children's homes.

Table 4.1: Children's statutory residential homes at 30 September 2007¹

Board	Statutory Homes	Statutory Places	Places per 10,000-pop. aged under 18
Eastern	18	139	8.3
Northern	7	60	5.4
Southern	7	45	5.0
Western	13	79	9.5
Northern Ireland	45	323	7.2

Main Points

- At 30 September 2007, there were 45 children's statutory residential homes in Northern Ireland providing 323 places, with an average of 7.2 places per home.
- Two fifths (18) of statutory children's homes in Northern Ireland were located in the Eastern Board, and this accounts for 43% of the statutory places available across Northern Ireland.
- The Western Board (9.5) and Eastern Board (8.3) had the highest number of places per 10,000-population aged under 18, whilst the Southern Board (5.0) and the Northern Board (5.4) had the lowest.

¹ Source: Health & Personal Social Services Regulation and Quality Improvement Authority (RQIA)

Figure 4.1: Places in children's statutory residential homes by board at 30 September 2007

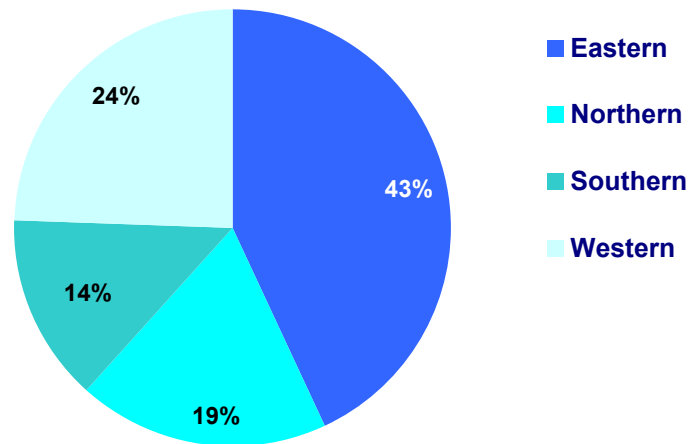


Table 4.2: Children's independent residential homes at 30 September 2007¹

Board	Independent Homes	Independent Places	Places per 10,000-pop. aged under 18
Eastern	7	47	2.8
Northern	3	17	1.5
Southern	4	16	1.8
Western	0	0	0.0
Northern Ireland	14	80	1.8

Main Points

- At 30 September 2007, there were 14 independent children's homes providing 80 places, with an average of less than 2 places per 10,000-population aged under 18.
- There were no independent children's homes in the Western Board.
- Of the 80 places in independent children's homes, over half were provided by 7 homes in the Eastern Board.

¹ Source: Health & Personal Social Services Regulation and Quality Improvement Authority (RQIA)

Secure Accommodation

Secure accommodation is provided for the purpose of 'restricting liberty'. In 2006/07, there was one secure unit in Northern Ireland, providing accommodation for up to a maximum of 15 young people at any one time.

The secure accommodation unit for children is located within the Ulster Community & Hospitals Trust, and admissions into this unit are available on a regional basis.

Table 5.1: Admissions into secure accommodation by age and gender (2006/07)

Gender	Age at time of admission						All admissions	
	12-13		14-15		16+			
	No.	%	No.	%	No.	%	No.	%
Boys	4	21.1	12	63.2	3	15.8	19	35.8
Girls	3	8.8	27	79.4	4	11.8	34	64.2
Total	7	13.2	39	73.6	7	13.2	53	100.0

Main Points

- During 2006/07, there were 53 admissions into secure accommodation.
- Of the 53 admissions in 2006/07, 34 (64%) were female and 19 were male (36%).
- Almost three quarters (74%) of the admissions into secure accommodation during 2006/07 related to children aged 14 – 15.

Figure 5.1: Admissions into secure accommodation by age and gender (2006/07)

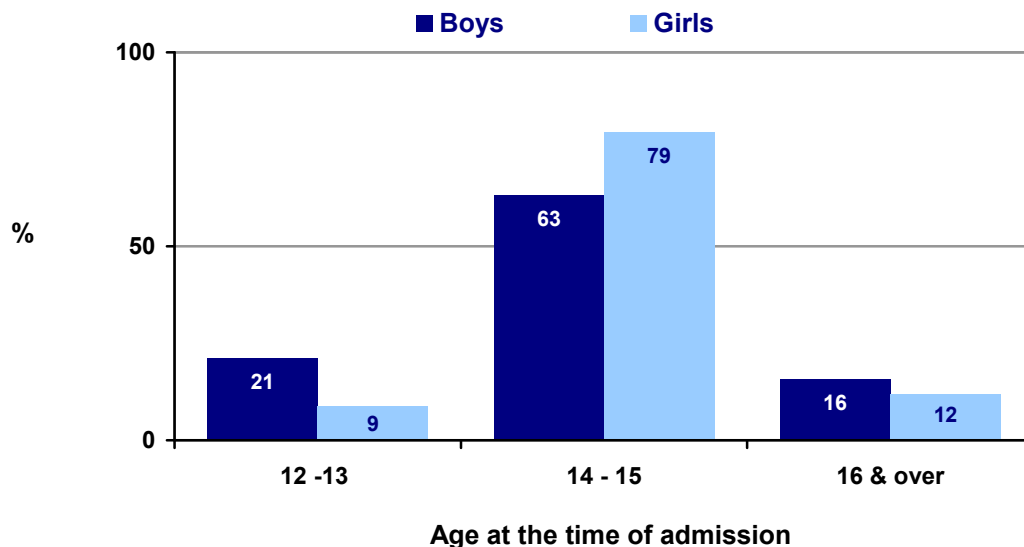


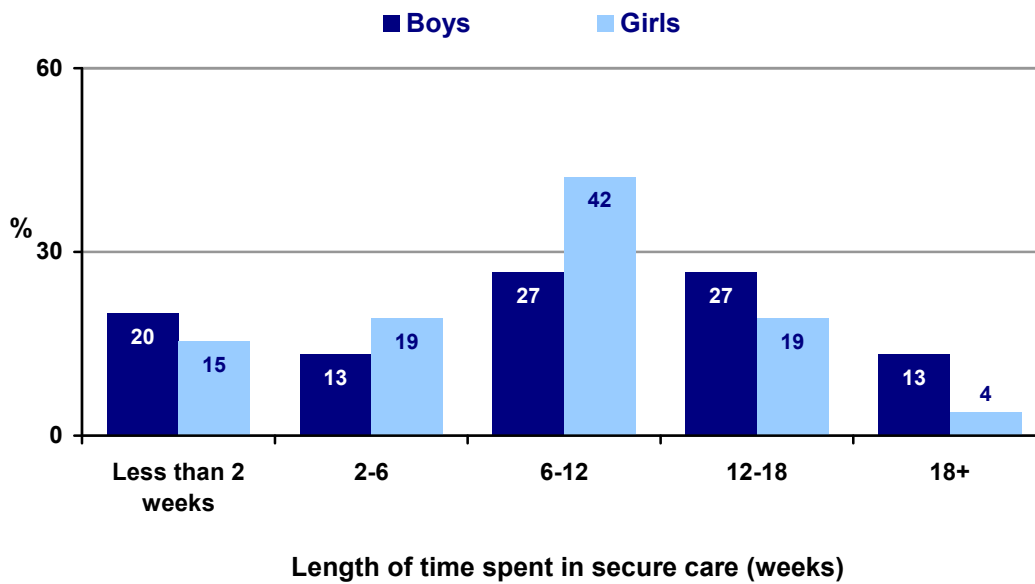
Table 5.2: Discharges from secure accommodation by gender and duration in care (2006/07) ¹

Gender	Weeks										All Discharges	
	Less than 2		2-6		6-12		12-18		18+		No.	%
	No.	%	No.	%	No.	%	No.	%	No.	%		
Boys	3	20.0	2	13.3	4	26.7	4	26.7	2	13.3	15	36.6
Girls	4	15.4	5	19.2	11	42.3	5	19.2	1	3.8	26	63.4
Total	7	17.1	7	17.1	15	36.6	9	22.0	3	7.3	41	100.0

Main Points

- During 2006/07, there were 41 discharges from secure accommodation, of which 26 (63%) were female and 15 (37%) were male.
- Almost one third (12) of discharges related to children who had been in secure accommodation for 12 weeks or longer, compared with 7 discharges where children had been in secure accommodation for less than 2 weeks.

Table 5.2: Discharges from secure accommodation by gender and duration (2006/07) ¹



¹ Excludes children admitted in 2006/07 who were still in care at 31st March 2007.

Comparative Data

In order to view regional data in a UK context, for this section the latest figures available from England, Scotland and Wales, are presented alongside those for Northern Ireland¹.

Child Protection

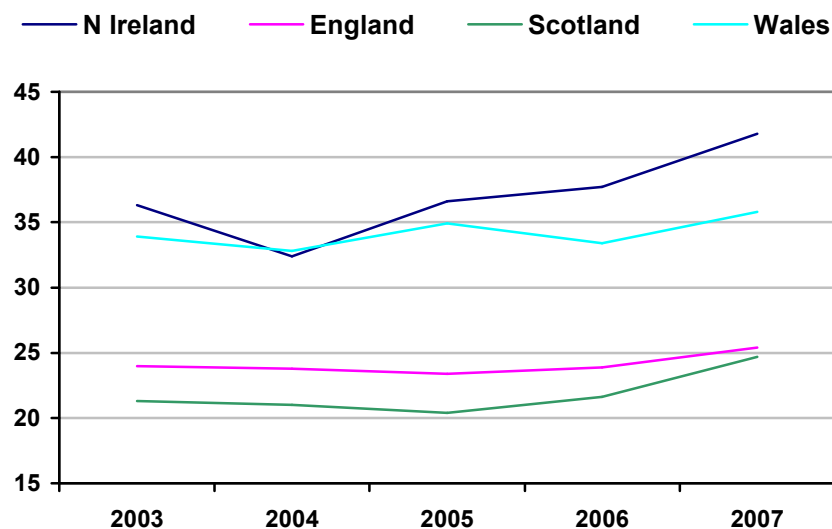
Table 6.1: Child protection register – UK comparative data (2006/07)

	N Ireland	England ²	Scotland	Wales
Number at 31 March	41.8	25.4	24.7	35.8
Registrations	30.2	30.3	30.0	46.5
De-registrations	26.2	28.9	29.4	44.3
Re-registrations	5.0	4.0	5.6	n/a

Main Points

- At 31 March 2007, Northern Ireland had the highest rate (41.8) of children on the child protection register per 10-000 population aged under 18. The rate for Wales was 35.8, for England 25.4 and 24.7 in Scotland.
- Wales had the highest rate of registrations and de-registrations, 46.5 and 44.3 respectively.

Figure 6.1: Children on child protection register – UK comparative data (2003 – 2007)



¹ Figures shown are rates per 10,000-population aged under 18 and are based on the 2006 mid year population estimates for children aged under 18, available from the Office for National Statistics (ONS).

² English figures refer to children who are the subject of a child protection plan.

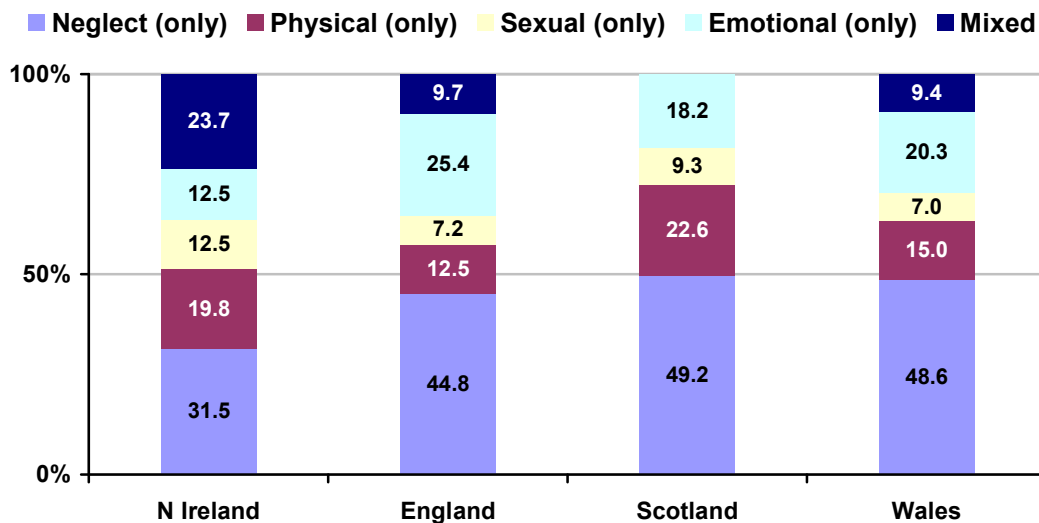
Table 6.2: Child protection register by category of abuse – UK comparative data (2006/07)¹

Category	N Ireland		England		Scotland		Wales	
	Rate	%	Rate	%	Rate	%	Rate	%
Neglect (only)	13.2	31.5	11.4	44.8	12.1	49.2	17.4	48.6
Physical (only)	8.3	19.8	3.2	12.5	5.6	22.6	5.4	15.0
Sexual (only)	5.2	12.5	1.8	7.2	2.3	9.3	2.5	7.0
Emotional (only)	5.2	12.5	6.5	25.4	4.5	18.2	7.3	20.3
Mixed	9.9	23.7	2.5	9.7	n/a	n/a	3.4	9.4
Total	41.8	100.0	25.4	100.0	24.7	100.0	35.8	100.0

Main Points

- Wales had the highest rate of children assessed to be at risk of Neglect only (17.4) followed by Northern Ireland (13.2), Scotland (12.1) and England (11.4). This category represents almost half of the children on the Child Protection Register in Scotland and Wales but less than a third of those on the register in Northern Ireland.
- Meanwhile the lowest rate of children assessed to be at risk of Sexual Abuse only was in England (1.8) with the highest in Northern Ireland (5.2), equating to 12.5% of the children on the register.
- The highest proportion of children on the register at risk of Emotional Abuse only was in England, where this applied to over a quarter of the total number of children on the register. This compares with 20.2% in Wales, 18.2% in Scotland and just 12.5% in Northern Ireland.

Figure 6.2: Percentage of children on child protection register by category of abuse – UK comparative data (2006/07)



¹ Percentage figures may not sum to totals due to rounding.

Looked After Children

Table 6.3: Looked after children – UK comparative data over 5 years

Year	N Ireland		England		Scotland		Wales	
	Number	Rate	Number	Rate	Number	Rate	Number	Rate
2007	2,356	54.5	60,000	54.6	13,764	131.0	4,640	72.4
2003	2,446	55.3	61,200	55.2	11,388	106.1	4,220	64.4
% change per 10,000-population	- 1 %		- 1 %		+ 24 %		+ 12 %	

Main Points

- At 31 March 2007, Northern Ireland and England had similar rates of looked after children per 10,000-population, 54.5 and 54.6 respectively. The rate for Scotland was 131.0 and for Wales 72.4.
- There was little change over the past five years in the rate of looked after children across Northern Ireland and England. However the rate increased in both Scotland and Wales by 24% and 12% respectively.

Table 6.4: Looked after children by placement – UK comparative data (2006/07) ¹

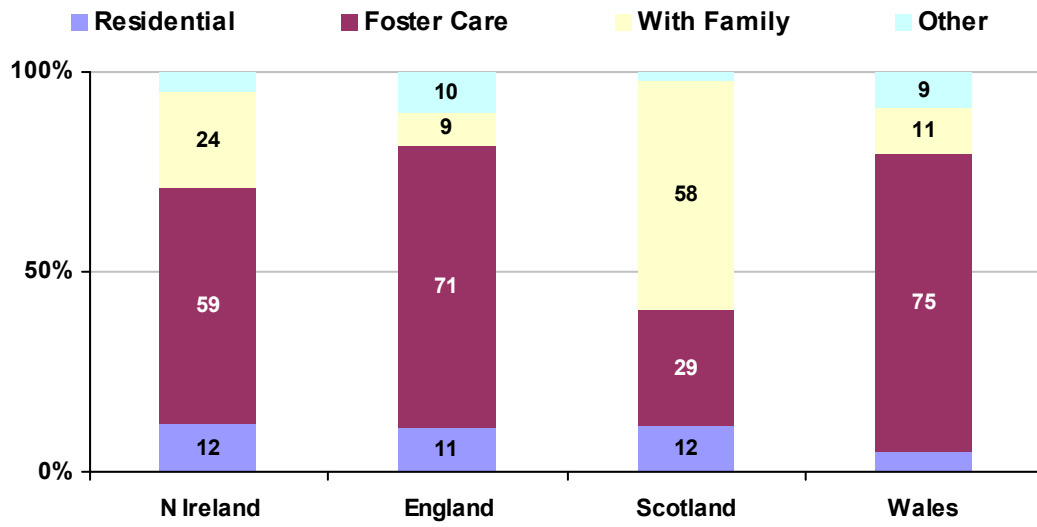
Category	N Ireland		England		Scotland		Wales	
	Rate	%	Rate	%	Rate	%	Rate	%
Residential	6.5	12.0	5.9	10.8	15.1	11.5	3.5	4.8
Foster Care	32.1	59.0	38.5	70.5	37.8	28.9	54.1	74.7
With Family	13.1	24.0	4.6	8.5	75.7	57.8	8.2	11.3
Other	2.7	5.0	5.5	10.2	2.4	1.8	6.6	9.2
Total	54.5	100.0	54.6	100.0	131.0	100.0	72.4	100.0

Main Points

- At 31 March 2007 the majority of placements in Wales (75%), England (71%) and Northern Ireland (59%) were in foster care. Just over a quarter of placements in Scotland (29%) were foster care placements.
- Over half of all placements in Scotland were with family (58%) compared with almost a quarter of those in Northern Ireland and just 11% in Wales and 9% of placements in England.
- Residential accommodation accounted for 12% of placements in Northern Ireland and Scotland, 11% in England and 5% of placements in Wales.

¹ At least one Trust inappropriately classified some children placed in foster care as placed with family in the LA2 return provided to Community Information Branch. Care needs to be exercised when using these figures.

Figure 6.3: Percentage of looked after children by placement – UK comparative data (2006/07)



Further Information

Detailed children order tables as at 31 March 2007 are available to download at:

www.dhsspsni.gov.uk/index/stats_research/stats-cib/stats-cib_pubs/stats-cib-children_order_bulletin.htm .

For **further details** about the statistics contained in this bulletin, please contact:

Community Information Branch
Room 11
Annexe 2
Castle Buildings
Stormont Estate
Belfast
BT4 3SQ



028 9052 0727

Fax: 028 9052 3288

Email: cib@dhsspsni.gov.uk