

Statistics Release



Department of
**Health, Social Services
and Public Safety**

An Roinn
**Sláinte, Seirbhísí Sóisialta
agus Sábháilteachta Poiblí**

www.dhsspsni.gov.uk

2nd March 2006

Northern Ireland Waiting Lists – December 2005

This statistics release gives details of the number of people waiting for inpatient or outpatient treatment at hospitals in Northern Ireland at the end of December 2005, the most recent quarter for which figures are available.

Inpatients

Headline Totals – Table 1

The total number of patients waiting to be admitted to hospitals in Northern Ireland at the end of December 2005 stood at 44,740.

Over the quarter, comparing the end of December 2005 with the end of September 2005 (46,944), the total number waiting has decreased by 2,204 (-4.7%).

Over the year, comparing the end of December 2005 with the end of December 2004 (49,040), the total number waiting decreased by 4,300 (-8.8%).

Table 1: Quarterly Waiting Lists – December 2005

Waiting for:	Quarter Ending December 2005	Change compared with end of previous quarter	Change compared with end same quarter – previous year
Ordinary Admissions	17,145	-803	-3,215
Day case Admissions	27,595	-1,401	-1,085
Total Waiting	44,740	-2,204	-4,300

Source: CHI

Detailed notes and definitions are provided in the Technical Notes.



A National Statistics Publication

National Statistics are produced to high professional standards set out in the National Statistics Code of Practice. They undergo regular quality assurance reviews to ensure that they meet customer needs. They are produced free from any political interference.

Numbers Waiting for Ordinary Admission and Day Case Treatment

People on the inpatient waiting list in Northern Ireland can be waiting for admission to hospital as day cases or as ordinary admissions.

Of the 44,740 people waiting for admission to hospital at the end of December 2005, 17,145 (38.3%) were waiting for ordinary admission and 27,595 (61.7%) were waiting for day case admission (Table 1).

Since the end of September 2005, the number of cases waiting for ordinary admission has decreased by 803 (-4.5%) and the number waiting for day case admission has decreased by 1,401 (-4.8%).

In comparison with December 2004, the number of cases waiting for ordinary admission has decreased by 3,215 (-15.8%) and the number waiting for day case admission has decreased by 1,085 (-3.8%).

Waiting Times for Ordinary Admission and Day case Treatment¹ – Tables 2a & 2b

At the end of December 2005, the number of patients waiting 12 months and over was 1,274 or 2.8% of the total waiting. Of those, the number waiting 18 months and over at the end of December 2005 stood at 295 or 0.7% of the total waiting.

Over the quarter, comparing the end of December 2005 with the end of September 2005, the number of people waiting 12 months and over decreased by 1,160 (-47.7%). The number of patients waiting 18 months and over decreased by 332 (-53.0%) over the same period.

Over the year, comparing the end of December 2005 with the end of December 2004, the number of people waiting 12 months and over decreased by 4,187 (-76.7%). Over the same period the number of people waiting 18 months and over decreased by 2,064 (-87.5%).

Table 2a Patients Waiting 12 Months and Over¹ – December 2005

Waiting for:	Quarter Ending December 05	Change compared with end of previous quarter	Change compared with end same quarter - previous year
Ordinary admissions	792	-756	-3,076
Day case admissions	482	-404	-1,111
Total Waiting	1,274	-1,160	-4,187

Source: CH1

¹ Refer to Technical Notes – point 3.

Table 2b Patients Waiting 18 Months and Over¹ – December 2005

Waiting for:	Quarter Ending December 05	Change compared with end of previous quarter	Change compared with end same quarter - previous year
Ordinary admissions	252	-286	-1,641
Day case admissions	43	-46	-423
Total Waiting	295	-332	-2,064

Source: CH1

¹ Refer to Technical Notes – point 3.

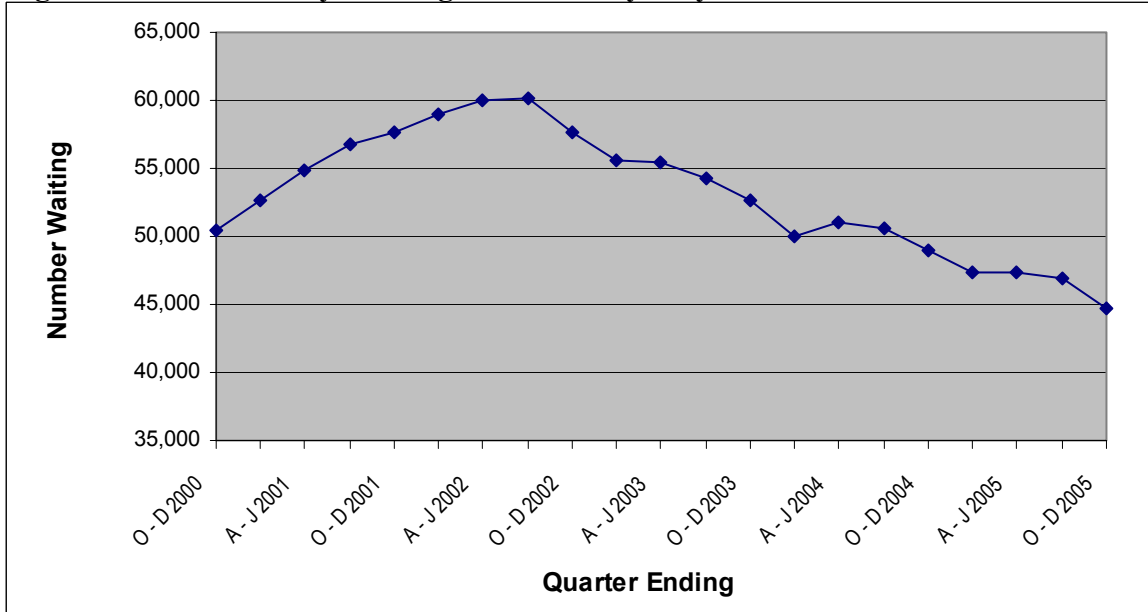
Peak Figures

The end of December 2005 total of 44,740 on the inpatient waiting list represents a decrease of 15,450 (-25.7%) on the peak waiting list figure of 60,190 (end September 2002).

Trends

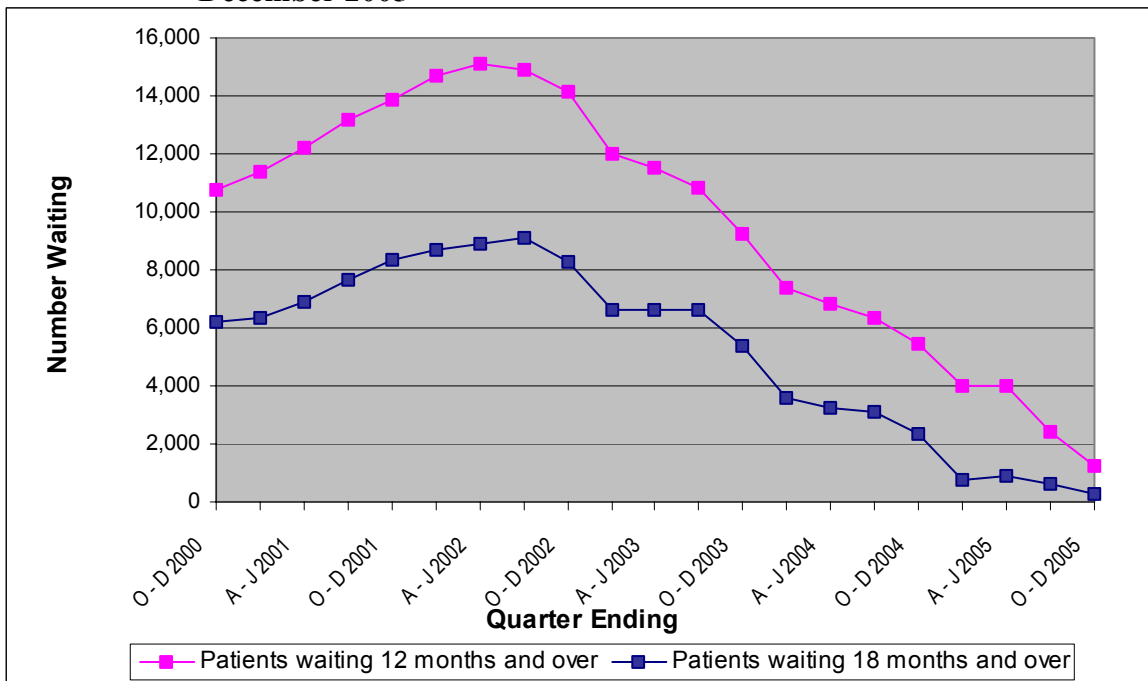
The total number of people waiting was on a generally upward trend from December 2000, and rose to peak in September 2002. There has been an overall downward trend since this peak. The total number of people waiting increased slightly during the quarter ending June 2005, but has decreased in the last two quarters (Figure 1). Patients waiting over 12 months have been generally on a downward trend since September 2002 as have patients waiting over 18 months (Figure 2).

Figure 1 Quarterly Waiting Lists – Five yearly trends December 2000 – December 2005



Source: CH1

Figure 2 Quarterly Waiting Times¹ - Five yearly trends December 2000 – December 2005



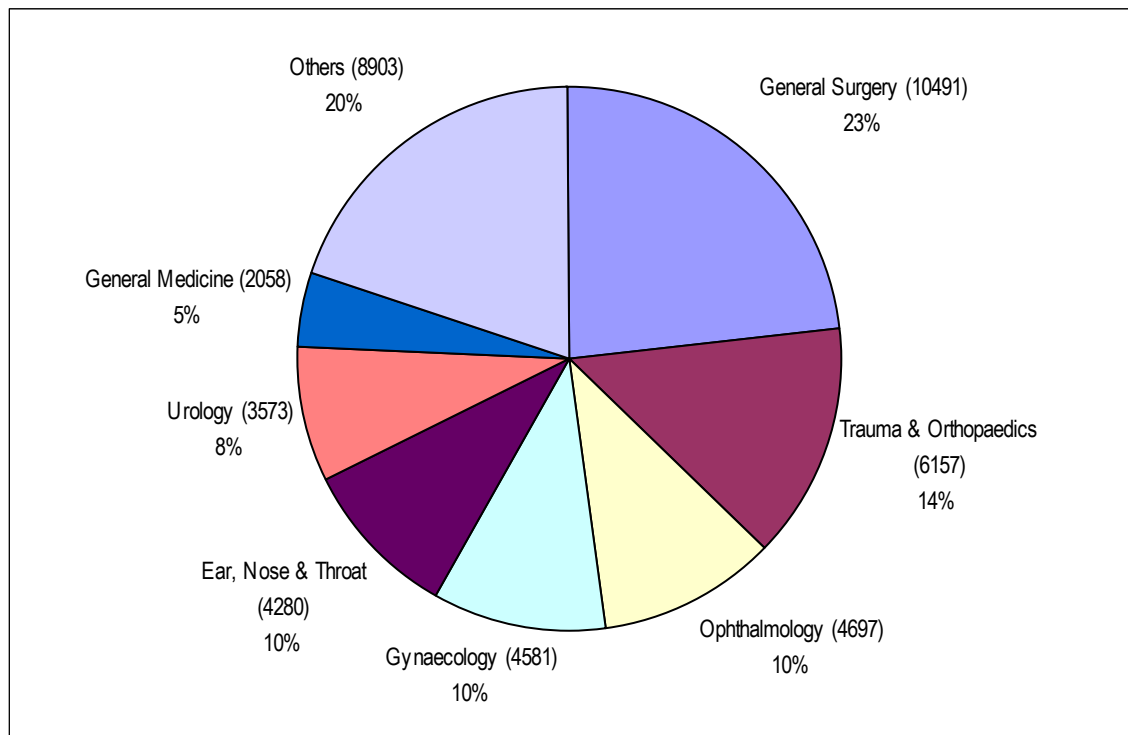
Source: CH1

¹ Refer to Technical Notes – point 3.

Inpatients Waiting by Specialty

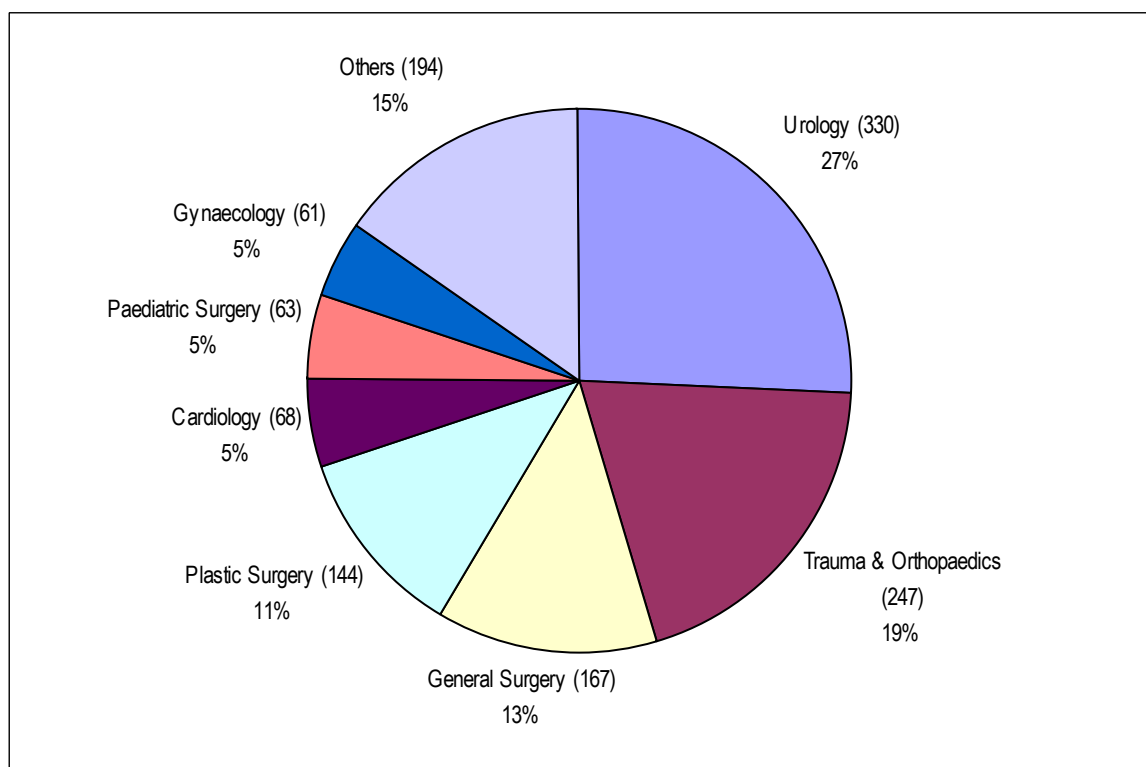
The overwhelming majority of those waiting (80%) were within seven specialties: General Surgery; Trauma and Orthopaedic Surgery (T&O); Ophthalmology; Gynaecology (Gynae); Ear, Nose and Throat (ENT); Urology and General Medicine (Figure 3a). Figures for patients waiting 12 months and over are shown in Figure 3b. Figures for patients waiting 18 months and over are shown in Figure 3c.

Figure 3a Inpatients - Total Waiters by Specialty at the end of December 2005



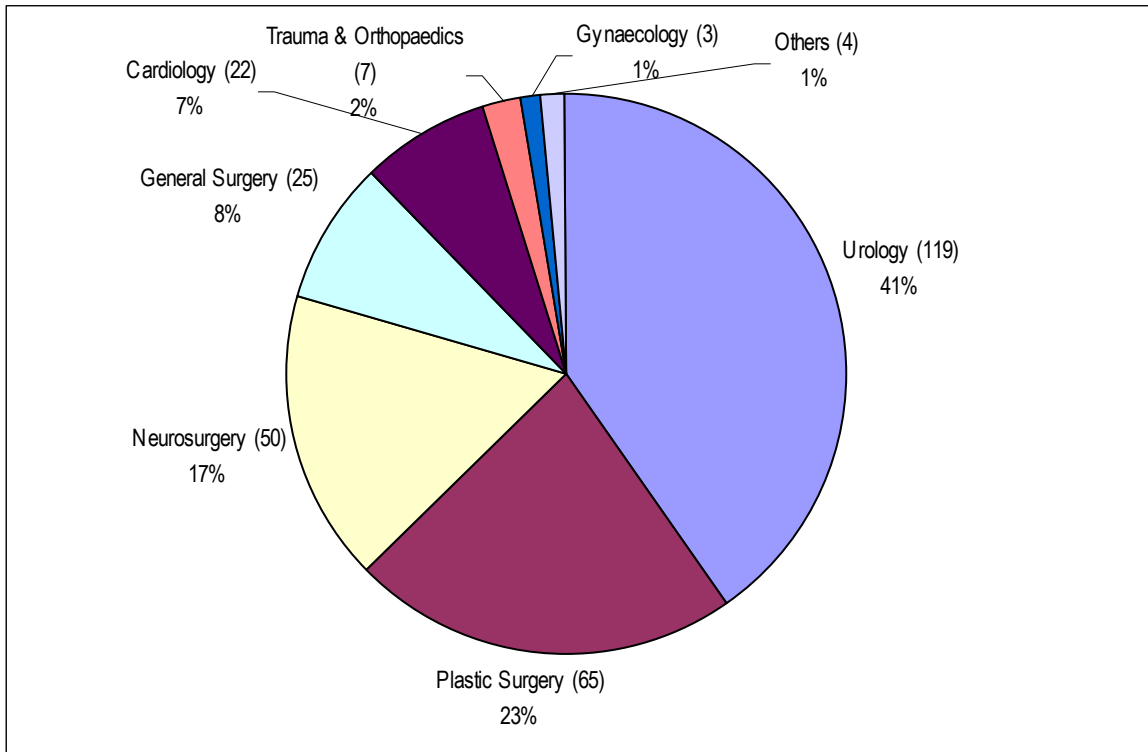
Source: CHI

Figure 3b Inpatients – Patients waiting 12 months and over¹ by Specialty at the end of December 2005



Source: CHI

Figure 3c Inpatients – Patients waiting 18 months and over¹ by Specialty at the end of December 2005



Source: CH1

¹ Refer to Technical Notes – point 3.

Inpatient Waiting Time by Specialty

Waiting times for inpatients by specialty are shown in Tables 3a and 3b. The proportion of those waiting less than 12 months ranged from 100% in a number of Specialities including Cardiac Surgery to 74.6% in Neurosurgery. Overall 97.2% of those waiting for admission were waiting less than 12 months. More than 99% of patients were waiting for treatment in the Acute Services Programme of Care.

Table 3a Number of Patients Waiting for Admission by Months Waiting and Specialty – December 2005

Specialty	Patients Waiting for Admission by Months Waiting									Total Number of Patients Awaiting Admission
	0 - 2	3 - 5	6 - 8	9 - 11	12 - 14	15 - 17	18 - 20	21 - 23	24 +	
General Surgery	6,226	2,237	1,353	508	116	26	12	9	4	10,491
Trauma & Orthopaedics	2,068	1,604	1,486	752	200	40	6	0	1	6,157
Ophthalmology	2,554	1,350	622	133	35	2	1	0	0	4,697
Gynaecology	2,662	1,068	572	218	55	3	1	2	0	4,581
Ear, Nose & Throat	2,169	1,089	723	260	37	0	0	1	1	4,280
Urology	1,792	793	406	252	163	48	21	19	79	3,573
General Medicine	1,351	419	210	53	24	1	0	0	0	2,058
Gastroenterology	1,134	339	144	47	1	0	0	0	0	1,665
Cardiology	769	365	233	85	31	15	9	3	10	1,520
Plastic Surgery	609	329	184	68	53	26	20	17	28	1,334
Pain Management	399	202	121	24	16	1	0	0	0	763
Paediatric Surgery	230	124	199	65	49	13	0	0	1	681
Rheumatology	400	92	20	2	0	0	0	0	0	514
Dermatology	248	100	87	51	7	0	0	0	0	493
Oral Surgery	278	106	79	8	2	0	0	0	0	473
Cardiac Surgery	171	66	4	0	0	0	0	0	0	241
Neurosurgery	72	49	40	6	6	1	3	3	44	224
Neurology	105	38	36	24	1	0	0	0	0	204
Nephrology	56	55	14	0	0	0	0	0	0	125
Thoracic Surgery	82	23	2	1	2	0	0	0	0	110
Other	457	57	31	6	5	0	0	0	0	556
All Specialties	23,832	10,505	6,566	2,563	803	176	73	54	168	44,740

Table 3b Percentage of Patients Waiting for Admission by Months Waiting and Specialty – December 2005

Specialty	Patients Waiting for Admission by Months Waiting								
	0 - 2	3 - 5	6 - 8	9 - 11	12 - 14	15 - 17	18 - 20	21 - 23	24 +
General Surgery	59.3%	21.3%	12.9%	4.8%	1.1%	0.2%	0.1%	0.1%	0.0%
Trauma & Orthopaedics	33.6%	26.1%	24.1%	12.2%	3.2%	0.6%	0.1%	0.0%	0.0%
Ophthalmology	54.4%	28.7%	13.2%	2.8%	0.7%	0.0%	0.0%	0.0%	0.0%
Gynaecology	58.1%	23.3%	12.5%	4.8%	1.2%	0.1%	0.0%	0.0%	0.0%
Ear, Nose & Throat	50.7%	25.4%	16.9%	6.1%	0.9%	0.0%	0.0%	0.0%	0.0%
Urology	50.2%	22.2%	11.4%	7.1%	4.6%	1.3%	0.6%	0.5%	2.2%
General Medicine	65.6%	20.4%	10.2%	2.6%	1.2%	0.0%	0.0%	0.0%	0.0%
Gastroenterology	68.1%	20.4%	8.6%	2.8%	0.1%	0.0%	0.0%	0.0%	0.0%
Cardiology	50.6%	24.0%	15.3%	5.6%	2.0%	1.0%	0.6%	0.2%	0.7%
Plastic Surgery	45.7%	24.7%	13.8%	5.1%	4.0%	1.9%	1.5%	1.3%	2.1%
Pain Management	52.3%	26.5%	15.9%	3.1%	2.1%	0.1%	0.0%	0.0%	0.0%
Paediatric Surgery	33.8%	18.2%	29.2%	9.5%	7.2%	1.9%	0.0%	0.0%	0.1%
Rheumatology	77.8%	17.9%	3.9%	0.4%	0.0%	0.0%	0.0%	0.0%	0.0%
Dermatology	50.3%	20.3%	17.6%	10.3%	1.4%	0.0%	0.0%	0.0%	0.0%
Oral Surgery	58.8%	22.4%	16.7%	1.7%	0.4%	0.0%	0.0%	0.0%	0.0%
Cardiac Surgery	71.0%	27.4%	1.7%	0.0%	0.0%	0.0%	0.0%	0.0%	0.0%
Neurosurgery	32.1%	21.9%	17.9%	2.7%	2.7%	0.4%	1.3%	1.3%	19.6%
Neurology	51.5%	18.6%	17.6%	11.8%	0.5%	0.0%	0.0%	0.0%	0.0%
Nephrology	44.8%	44.0%	11.2%	0.0%	0.0%	0.0%	0.0%	0.0%	0.0%
Thoracic Surgery	74.5%	20.9%	1.8%	0.9%	1.8%	0.0%	0.0%	0.0%	0.0%
Other	82.2%	10.3%	5.6%	1.1%	0.9%	0.0%	0.0%	0.0%	0.0%
All Specialties	53.3%	23.5%	14.7%	5.7%	1.8%	0.4%	0.2%	0.1%	0.4%

Source: CH1

Inpatient Waiting Times by Provider Trust

Waiting times for inpatients by Trust are shown in Table 4.

Table 4 Number of Patients Waiting for Admission by Provider Trust and by Months Waiting – December 2005

Provider Trust	Patients Waiting for Admission by Months Waiting									Total Number of Patients Awaiting Admission
	0 - 2	3 - 5	6 - 8	9 - 11	12 - 14	15 - 17	18 - 20	21 - 23	24 +	
Altnagelvin Group	2,578	1,160	729	389	199	47	2	0	1	5,105
Belfast City Hospital	2,457	1,326	698	297	102	29	18	13	3	4,943
Causeway	831	150	61	0	0	1	0	0	0	1,043
Craigavon Area Hospital Group	3,367	1,499	1,006	337	89	40	23	19	79	6,459
Down Lisburn	846	238	106	36	4	0	0	0	0	1,230
Green Park Healthcare	1,987	1,342	1,243	593	123	5	5	0	0	5,298
Mater Infirmorum Hospital	1,477	637	490	97	57	0	0	0	0	2,758
Newry & Mourne	630	130	81	10	6	0	0	0	0	857
Royal Group of Hospitals	3,604	1,973	1,044	336	102	33	12	8	68	7,180
South and East Belfast	94	2	1	0	0	0	0	0	0	97
Sperrin Lakeland	1,228	415	61	3	0	0	0	0	0	1,707
Ulster Community & Hospitals	2,293	760	492	213	81	21	13	14	16	3,903
United Hospitals Group	2,440	873	554	252	40	0	0	0	1	4,160
Total	23,832	10,505	6,566	2,563	803	176	73	54	168	44,740

Source: CH1

Inpatient Completed Waits

Waiting times for completed inpatient waits are shown in Table 5. A total of 40,360 inpatients were admitted to hospital (excluding those who had previously refused an offer of admission) during the December 2005 quarter. 72.7% of patients received their treatment within 3 months of being placed on the waiting list and 95.4% received their treatment within 12 months.

Table 5 Completed Inpatient Waits

Quarter	Time Waiting in Months									Total
	0 - 2	3 - 5	6 - 8	9 - 11	12 - 14	15 - 17	18 - 20	21 - 23	24 +	
J - M 2003	73.6%	12.0%	4.6%	3.1%	2.2%	1.7%	0.9%	0.5%	1.3%	38,987
A - J 2003	73.9%	12.5%	5.2%	3.1%	2.0%	1.2%	0.7%	0.4%	1.0%	38,512
J - S 2003	71.9%	14.1%	5.2%	3.5%	1.7%	1.2%	0.7%	0.4%	1.1%	35,605
O - D 2003	72.7%	12.3%	5.4%	3.7%	2.0%	1.2%	0.9%	0.5%	1.5%	38,906
J - D 2003	73.0%	12.7%	5.1%	3.3%	2.0%	1.3%	0.8%	0.5%	1.2%	152,010
J - M 2004	74.4%	11.6%	4.8%	3.5%	1.9%	1.3%	0.6%	0.5%	1.3%	40,924
A - J 2004	74.6%	11.4%	5.9%	3.1%	1.9%	1.2%	0.6%	0.3%	0.9%	38,507
J - S 2004	73.1%	13.1%	5.4%	3.7%	1.9%	1.1%	0.7%	0.3%	0.7%	37,166
O - D 2004	73.4%	12.3%	5.5%	3.7%	2.3%	1.1%	0.7%	0.4%	0.7%	41,330
J - D 2004	73.9%	12.1%	5.4%	3.5%	2.0%	1.2%	0.6%	0.4%	0.9%	157,927
J - M 2005	72.9%	12.9%	4.8%	3.9%	1.9%	1.6%	0.8%	0.5%	0.7%	39,248
A - J 2005	74.1%	12.5%	6.2%	3.1%	2.0%	1.3%	0.5%	0.1%	0.3%	41,183
J - S 2005	72.0%	12.9%	5.4%	3.8%	2.4%	1.8%	0.9%	0.3%	0.3%	37,094
O - D 2005	72.7%	11.6%	6.1%	5.0%	2.9%	1.0%	0.4%	0.1%	0.2%	40,360
J - D 2005	72.9%	12.5%	5.6%	3.9%	2.3%	1.4%	0.6%	0.3%	0.4%	157,885

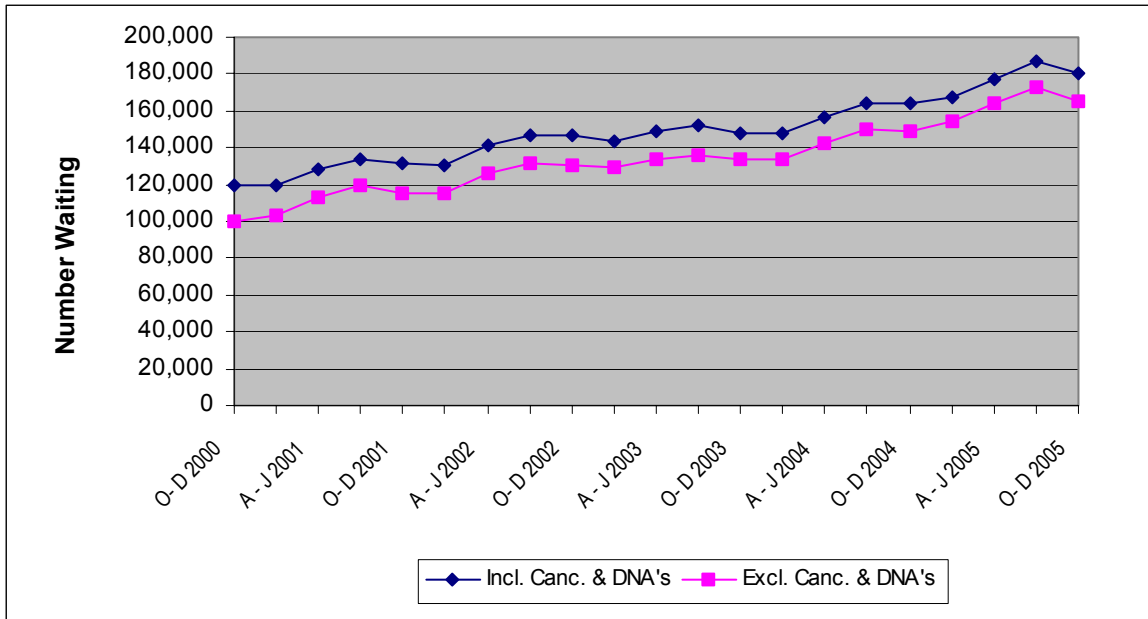
Source: CH2 Part 1

Outpatients

Headline Totals

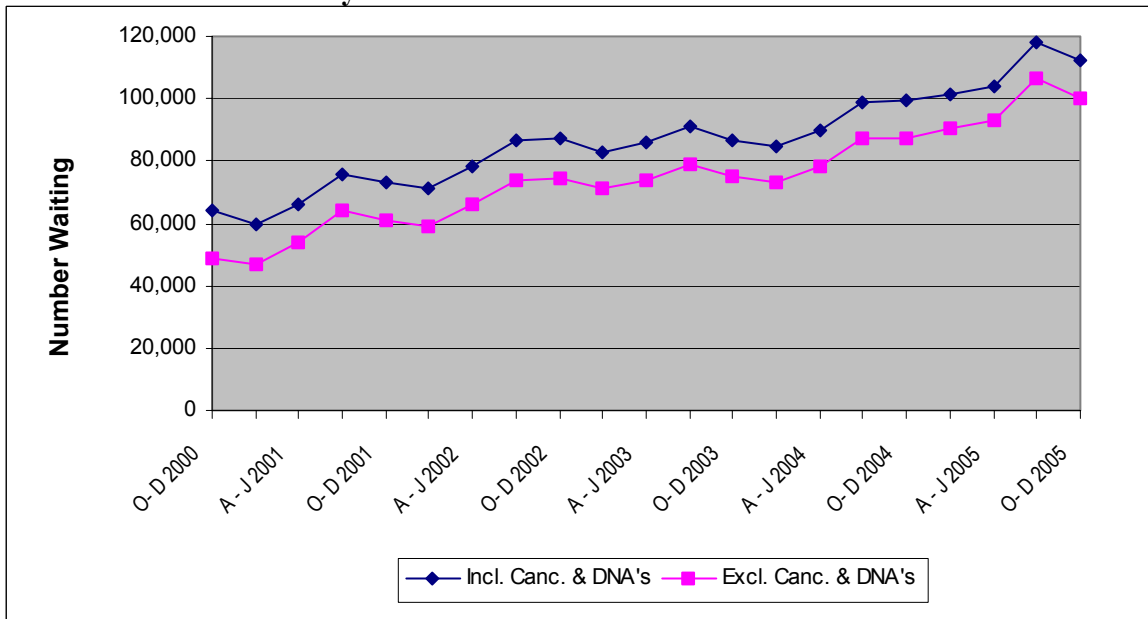
The number of patients waiting for admission as outpatients (including cancellations and deferrals) at the end of December 2005 stood at 180,238 representing a decrease of 6,753 (-3.6%) over the quarter and an increase of 15,608 (9.5%) compared with the same quarter in the previous year. Corresponding quarterly and annual changes (excluding cancellations and deferrals) were - 4.1% and +11.1% respectively. Figure 4 shows five yearly trends in the number of outpatients waiting for a first appointment. Figure 5 shows the same trends information for patients waiting 3 months and over for a first outpatient appointment.

Figure 4 Outpatients Waiting for a First Appointment (including and excluding cancellations and deferrals) – Five Yearly Trends December 2000 – December 2005



Source: CH3 Parts 1 & 2.

Figure 5 Patients waiting 3 months and over - Five Yearly Trends December 2000 – December 2005

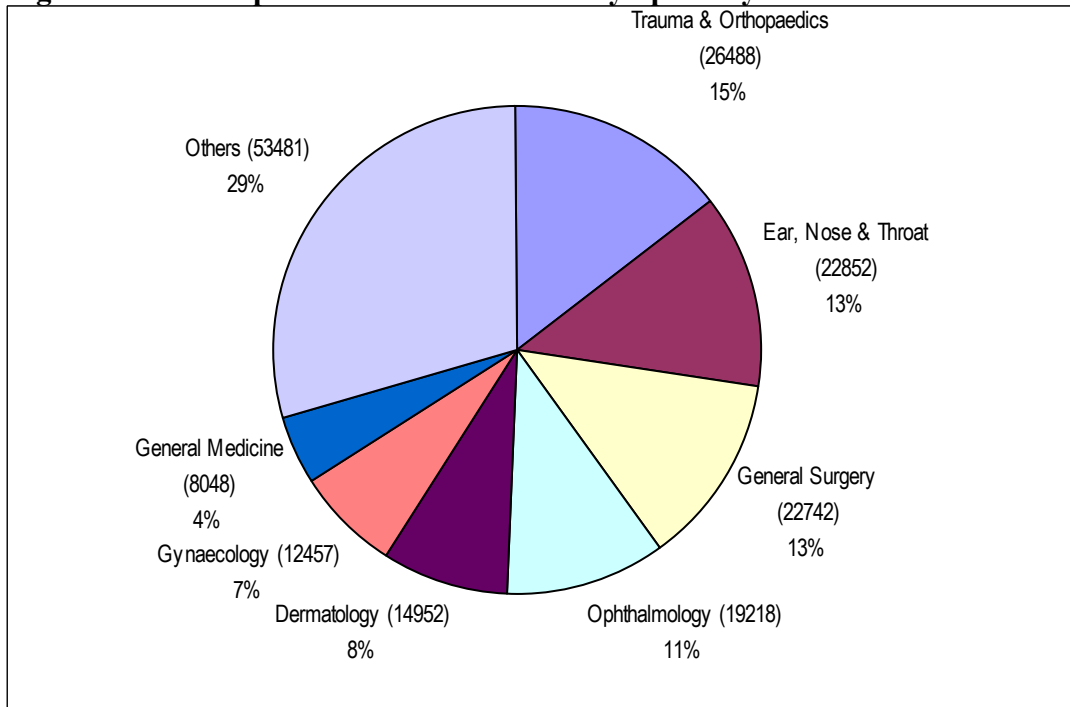


Source: CH3 Parts 1 & 2

Outpatients Waiting by Specialty

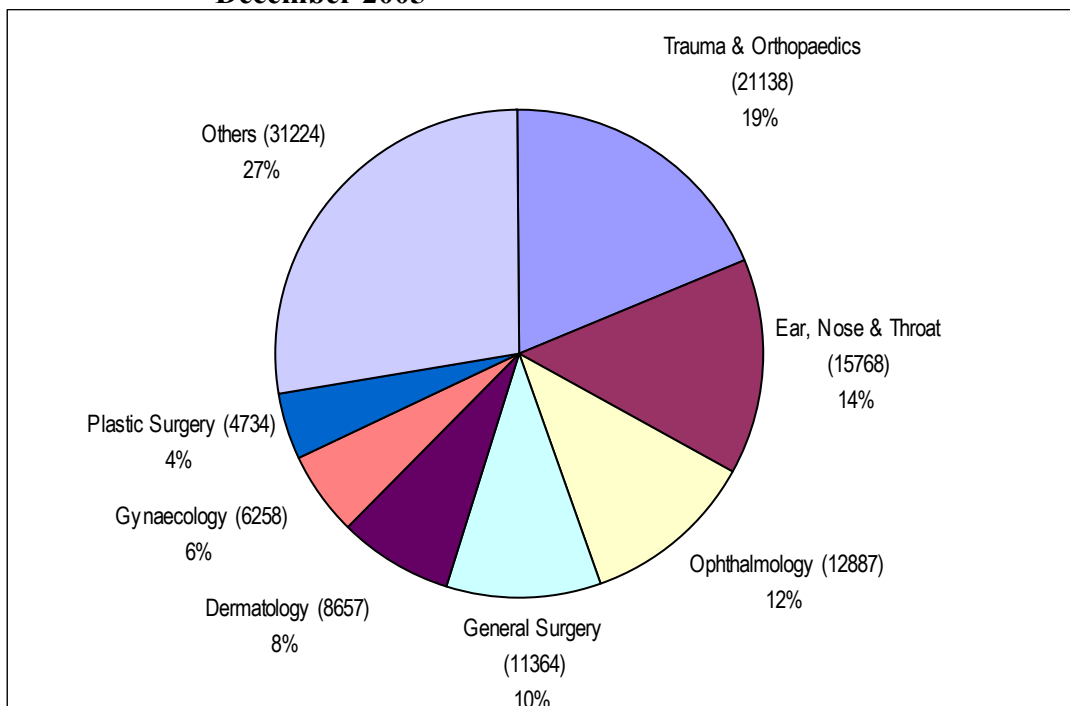
The majority of those waiting (71%) were within seven specialties: Trauma and Orthopaedic Surgery (T&O); Ear, Nose and Throat (ENT); General Surgery; Ophthalmology; Dermatology, Gynaecology (Gynae) and General Medicine (Figure 6a). Figures for patients waiting 3 months and over are shown in Figure 6b. Figures represent the total number waiting for their first outpatient appointment during the December 2005 quarter including those who have cancelled or missed a previous appointment.

Figure 6a Outpatients – Total Waiters by Specialty at the end of December 2005



Source: CH3.

Figure 6b Outpatients – Patients waiting 3 months and over by Specialty at the end of December 2005



Source: CH3.

Outpatient Waiting Time by Specialty

Waiting times for outpatients by specialty are shown in Tables 6a and 6b. The proportion of those waiting less than 12 months ranged from 100.0% in the Genito-Urinary Medicine specialty to 34.6% in Plastic Surgery. Overall four fifths (79.4%) of those waiting for treatment were waiting less than 12 months.

Table 6a Number of Patients Waiting for a First Appointment by Months Waiting and Specialty – December 2005

Specialty	Patients Waiting for an Appointment by Months Waiting									Total Number of Patients Awaiting Appointment
	0 - 2	3 - 5	6 - 8	9 - 11	12 - 14	15 - 17	18 - 20	21 - 23	24 +	
Trauma & Orthopaedics	5,350	4,203	3,511	2,543	2,089	2,204	1,582	982	4,024	26,488
Ear, Nose & Throat	7,084	4,914	3,847	2,321	1,247	993	632	643	1,171	22,852
General Surgery	11,378	5,274	3,150	1,265	708	437	223	151	156	22,742
Ophthalmology	6,331	4,357	3,230	1,703	1,187	850	602	378	580	19,218
Dermatology	6,295	3,482	2,047	851	635	562	319	221	540	14,952
Gynaecology	6,199	3,254	1,557	598	341	248	149	70	41	12,457
General Medicine	3,969	1,560	860	472	328	269	210	130	250	8,048
Cardiology	2,534	1,290	714	465	372	230	82	31	69	5,787
Plastic Surgery	730	485	411	262	255	261	212	181	2,667	5,464
Neurology	1,526	1,044	787	565	409	365	218	98	28	5,040
Urology	1,518	876	570	411	355	333	230	198	205	4,696
Rheumatology	1,158	790	695	314	244	243	168	132	51	3,795
Paediatrics	2,061	828	393	138	58	35	43	55	52	3,663
Oral Surgery	1,024	493	335	200	153	127	89	88	586	3,095
Genito-Urinary Medicine	2,411	0	0	0	0	0	0	0	0	2,411
Mental Illness	1,347	588	188	81	40	13	11	3	14	2,285
Pain Management	640	405	308	211	117	83	65	74	295	2,198
Restorative Dentistry	270	261	269	144	71	74	67	73	417	1,646
Paediatric Surgery	501	551	298	106	39	25	18	31	37	1,606
Gastroenterology	763	282	157	113	106	82	33	2	0	1,538
Other	5,119	1,996	1,216	603	452	224	189	162	296	10,257
All Specialties	68,208	36,933	24,543	13,366	9,206	7,658	5,142	3,703	11,479	180,238

Source: CH3

Table 6b Percentage of Patients Waiting for a First Appointment by Months Waiting and Specialty – December 2005

Specialty	Patients Waiting for an Appointment by Months								
	0 - 2	3 - 5	6 - 8	9 - 11	12 - 14	15 - 17	18 - 20	21 - 23	24+
Trauma & Orthopaedics	20.2%	15.9%	13.3%	9.6%	7.9%	8.3%	6.0%	3.7%	15.2%
Ear, Nose & Throat	31.0%	21.5%	16.8%	10.2%	5.5%	4.3%	2.8%	2.8%	5.1%
General Surgery	50.0%	23.2%	13.9%	5.6%	3.1%	1.9%	1.0%	0.7%	0.7%
Ophthalmology	32.9%	22.7%	16.8%	8.9%	6.2%	4.4%	3.1%	2.0%	3.0%
Dermatology	42.1%	23.3%	13.7%	5.7%	4.2%	3.8%	2.1%	1.5%	3.6%
Gynaecology	49.8%	26.1%	12.5%	4.8%	2.7%	2.0%	1.2%	0.6%	0.3%
General Medicine	49.3%	19.4%	10.7%	5.9%	4.1%	3.3%	2.6%	1.6%	3.1%
Cardiology	43.8%	22.3%	12.3%	8.0%	6.4%	4.0%	1.4%	0.5%	1.2%
Plastic Surgery	13.4%	8.9%	7.5%	4.8%	4.7%	4.8%	3.9%	3.3%	48.8%
Neurology	30.3%	20.7%	15.6%	11.2%	8.1%	7.2%	4.3%	1.9%	0.6%
Urology	32.3%	18.7%	12.1%	8.8%	7.6%	7.1%	4.9%	4.2%	4.4%
Rheumatology	30.5%	20.8%	18.3%	8.3%	6.4%	6.4%	4.4%	3.5%	1.3%
Paediatrics	56.3%	22.6%	10.7%	3.8%	1.6%	1.0%	1.2%	1.5%	1.4%
Oral Surgery	33.1%	15.9%	10.8%	6.5%	4.9%	4.1%	2.9%	2.8%	18.9%
Genito-Urinary Medicine	100.0%	0.0%	0.0%	0.0%	0.0%	0.0%	0.0%	0.0%	0.0%
Mental Illness	58.9%	25.7%	8.2%	3.5%	1.8%	0.6%	0.5%	0.1%	0.6%
Pain Management	29.1%	18.4%	14.0%	9.6%	5.3%	3.8%	3.0%	3.4%	13.4%
Restorative Dentistry	16.4%	15.9%	16.3%	8.7%	4.3%	4.5%	4.1%	4.4%	25.3%
Paediatric Surgery	31.2%	34.3%	18.6%	6.6%	2.4%	1.6%	1.1%	1.9%	2.3%
Gastroenterology	49.6%	18.3%	10.2%	7.3%	6.9%	5.3%	2.1%	0.1%	0.0%
Other	49.9%	19.5%	11.9%	5.9%	4.4%	2.2%	1.8%	1.6%	2.9%
All Specialties	37.8%	20.5%	13.6%	7.4%	5.1%	4.2%	2.9%	2.1%	6.4%

Source: CH3

Outpatient Waiting Time by Programme of Care

Waiting times for a first outpatient appointment by programme of care are shown in Table 7. The vast majority (97.2%) of patients were awaiting their first outpatient appointment in the Acute Services Programme of Care.

Table 7 Number of Patients Waiting for a First Appointment by Months Waiting and Programme of Care – December 2005

Programme of Care	Patients Waiting for an Appointment by Months Waiting									Total Number of Patients Awaiting Appointment
	0 - 2	3 - 5	6 - 8	9 - 11	12 - 14	15 - 17	18 - 20	21 - 23	24 +	
Acute Services	65,177	35,741	24,116	13,231	9,135	7,623	5,122	3,691	11,420	175,256
Elderly Care	1,046	333	88	18	15	12	0	0	2	1,514
Mental Health	1,959	815	331	114	56	23	20	12	57	3,387
Learning Disability	26	44	8	3	0	0	0	0	0	81
All POCs	68,208	36,933	24,543	13,366	9,206	7,658	5,142	3,703	11,479	180,238

Source: CH3

Outpatient Completed Waits

Waiting times for completed outpatient waits are shown in Table 8. During the December 2005 quarter a total of 91,969 outpatients attended their first appointment without having cancelled or missed a previous appointment. 67.7% of patients attended their first outpatient appointment within 3 months of being placed on the waiting list and 94.2% had their first outpatient appointment within 12 months.

Table 8 Completed Outpatient Waits for First Appointment²

Quarter	Time Waiting in Months									Total
	0 - 2	3 - 5	6 - 8	9 - 11	12 - 14	15 - 17	18 - 20	21 - 23	24 +	
J - M 2003	70.0%	17.2%	5.6%	2.8%	1.5%	0.9%	0.5%	0.4%	1.2%	85,054
A - J 2003	72.1%	15.8%	5.8%	2.8%	1.4%	0.8%	0.4%	0.3%	0.7%	84,963
J - S 2003	69.5%	18.4%	5.7%	2.5%	1.5%	0.7%	0.5%	0.3%	0.9%	80,128
O - D 2003	69.6%	17.9%	5.6%	2.6%	1.7%	0.8%	0.5%	0.4%	0.9%	88,711
J - D 2003	70.3%	17.3%	5.7%	2.7%	1.5%	0.8%	0.5%	0.3%	0.9%	338,856
J - M 2004	69.8%	17.1%	5.2%	2.9%	1.7%	1.3%	0.6%	0.4%	1.1%	91,496
A - J 2004	71.8%	15.9%	5.5%	2.7%	1.7%	0.9%	0.6%	0.3%	0.6%	88,213
J - S 2004	70.6%	17.9%	5.4%	2.5%	1.4%	0.8%	0.4%	0.3%	0.6%	84,455
O - D 2004	68.9%	17.3%	7.0%	2.6%	1.4%	0.9%	0.7%	0.4%	0.7%	91,915
J - D 2004	70.3%	17.1%	5.8%	2.7%	1.6%	1.0%	0.6%	0.3%	0.8%	356,079
J - M 2005	68.4%	16.4%	7.0%	3.3%	1.7%	1.3%	0.6%	0.4%	0.9%	86,944
A - J 2005	70.1%	15.6%	6.9%	2.9%	1.9%	0.7%	0.5%	0.3%	1.0%	91,489
J - S 2005	70.8%	16.0%	5.7%	2.9%	1.7%	1.1%	0.5%	0.4%	0.9%	82,721
O - D 2005	67.7%	15.9%	7.5%	3.1%	1.9%	1.1%	0.9%	0.6%	1.3%	91,969
J - D 2005	69.2%	16.0%	6.8%	3.1%	1.8%	1.0%	0.6%	0.4%	1.0%	353,123

Source: CH4 Part 1

² Refer to Technical Notes – point 13.

Technical Notes

1. The sources for the data contained in this release are the Information Returns CH1, CH2, CH3 and CH4. These returns collect information from Hospital Trusts on a quarterly basis.
2. Trust based information (CH1, CH2, CH3 and CH4) returns include all patients living outside Northern Ireland and all privately funded patients waiting for treatment in Health Service hospitals. This Trust based information falls within the scope of National Statistics.
3. Patients waiting 12 months and over include all patients in the following time bands: 12-14, 15-17, 18-20, 21-23 and 24+ months. Patients waiting 18 months and over include all patients in the following time bands: 18-20, 21-23 and 24+ months.
4. Inpatient waiting list data comprises the number of patients waiting for ordinary admission to hospital and the number of patients waiting for day case treatment.
5. Ordinary admissions include both (a) patients admitted electively with the expectation that they will remain in hospital for at least one night, and (b) non-elective admissions (e.g. emergency admissions). A patient who is admitted with either of the above intentions, but who leaves hospital for any reason without staying overnight, is still counted as an ordinary admission. Day cases are not included.
6. Day Cases are patients admitted electively during the course of a day with the intention of receiving care who do not require the use of a hospital bed overnight and who return home as scheduled. If this original intention is not fulfilled and the patient stays overnight, such a patient is counted as an ordinary admission.
7. The waiting list inpatient figures presented include people waiting to be admitted as inpatients either as day cases or ordinary admissions. They do not include:
 - Patients admitted as emergency cases;
 - Outpatients;
 - Patients undergoing a planned programme of treatment e.g. a series of admissions for chemotherapy;
 - Maternity (specialties 510 and 520);
 - Patients already in hospitals but included on other waiting lists;
 - Patients who are temporarily suspended from waiting lists.
8. Waiting time begins from the date the clinician decided to admit the patient. Patients subsequently offered a date but unable to attend have their waiting times calculated from the most recent date offered. These are known as self-deferred cases and are included in the total number waiting.
9. An additional inpatient waiting list table has been included for the first time this quarter (Table 4). This table shows the number of inpatients waiting for either ordinary admission to hospital or day case treatment in each applicable Health and Social Services Trust.
10. Outpatients are defined as patients still waiting for their first outpatient appointment at the end of the quarter. An outpatient appointment is to enable a patient to see a consultant, a member of his firm or locum for such a member, in respect of one referral.
11. Outpatient waiting list figures presented do not include maternity specialties 510 and 520.

12. The number of people awaiting an initial outpatient assessment at 30 September 2005 has been revised from 187,025 to 186,991. This is due to amendments received from Royal Group of Hospitals and Ulster Community & Hospitals HSS Trusts.
13. Due to reasons beyond the control of the Trust, United Hospitals HSS Trust has been unable to produce CH4 data for all quarters between December 2001 and December 2005. This Trust has provided estimated totals for these quarters and estimates for each time band have been calculated. These new estimates for the missing data for the United Group of Hospitals have been included in the data shown in Table 8. When CH4 data becomes available these estimates will be recast.
14. Department of Health, Social Services and Public Safety policy is to publish revised figures with subsequent statistical releases unless it is decided that the magnitude of the change merits earlier notification.
15. Figures relating to the quarter ending 31st March 2006 will be released on Thursday, 1st June 2006.
16. For general enquiries about National Statistics, contact the National Statistics Public Service on

020 7533 5888

minicom: 01633 812399

E-mail: info@statistics.gov.uk

Fax: 01633 652747

Letters: room DG/18, Drummond Gate,
LONDON SW1V 2QQ

You can also find National Statistics on the internet – Go to www.statistics.gov.uk.

Additional Information

Further information on waiting lists in Northern Ireland is available from:

Office Information Manager
Hospital Information Branch
Department of Health, Social Services and Public Safety
Annexe 2
Castle Buildings
Stormont
BT4 3SQ

E-mail: rib@dhsspsni.gov.uk

Internet address: http://www.dhsspsni.gov.uk/stats-hospital_community_statistics#waiting