

DHSSPS

**WORKFORCE PLANNING - TECH & SCI -
COMPOSITION**

APPENDIX D (V2)

**Deloitte & Touche
19 Bedford Street
Belfast BT2 7EJ
Northern Ireland**

RE0203007/PC/AH

CONTENTS		Page
1.	COMPOSITION OF TECHNICAL AND SCIENTIFIC WORKFORCE	1
2.	MLSOS	2
2.1	MLSOs by Department	2
2.2	MLSOs by Trust by Department	3
2.3	MLSOs by Grade and Gender	5
2.4	MLSOs by Trust	6
2.5	MLSOs by Age	6
2.6	MLSOs by Gender	7
2.7	Part-Time Working Among MLSOs	8
2.8	Trainee MLSOs	8
3.	MLAS	9
3.1	MLAs by Department	9
3.2	MLAs by Trust and Department	10
3.3	MLAs by Grade	11
3.4	MLAs by Trust	11
3.5	MLAs by Age	13
3.6	MLAs by Gender	14
3.7	Part- time Working Among MLAs	14
4.	MTOS	15
4.1	MTOs by Department	15
4.2	MTOs by Trust and Department	16
4.3	MTOs by Grade	19
4.4	MTOs by Trust	20

CONTENTS	Page
4.5 MTOs by Age	21
4.6 MTOs by Gender	22
4.7 Part-Time Working Among MTOs	22
4.8 Trainee MTOs	22
4.9 ATOs	23
5. CLINICAL SCIENTISTS	24
5.1 Clinical Scientists by Department	24
5.2 Clinical Scientists by Trust and Department	25
5.3 Clinical Scientists by Grade	26
5.4 Clinical Scientists by Trust	26
5.5 Clinical Scientists by Age	27
5.6 Clinical Scientists by Gender	28
5.7 Part-Time Working Among Clinical Scientists	28

1. COMPOSITION OF TECHNICAL AND SCIENTIFIC WORKFORCE

PLEASE NOTE:

The following data is that provided from the HRMS system for staff on the payroll as at 30 September 2001. It has been presented as received in order to ensure a consistent audit trail is available to the Department for future reference.

It is known that there are a number of discrepancies within the way in which the trusts and other organisations have categorised their staff, particularly with regards to the terminology used to describe specialties and sub-specialties.

Without carrying out a complete review of the data with each organisation it is not possible to provide a clean database within the terms of the review. Whilst information has been received about certain numbers in certain specialties, we have not adjusted any of this data. This is principally because we do not have sufficient information to adjust data without impacting on the overall totals used in the data modelling.

For example, if the numbers quoted against a specialty are too high, we do not know whether the individuals have been incorrectly classified to the specialty, to the grade, to the organisation or whether they should be on the payroll at all. We cannot therefore be sure that any adjustments are improving the overall quality of the data used.

It should also be noted that for the purposes of the data modelling (and therefore the main basis of the report), it is overall totals which have been used and the detailed analysis between specialties and organisations does not have an impact. Whilst discrepancies in the overall totals may exist, it is considered that they are immaterial enough as to not be significant when looking at overall trends within the data models.

Table 1.1
Technical and Scientific Workforce (2001)

Workforce Group	Number in Workforce
MLSO	545
Trainee MLSO	55
MLA	118
Cytoscreeners	7
MTO	306
Trainee MTO	12
ATO	51
Clinical Scientist	93

Source: HRMS

2. MLSOS

2.1 MLSOs by Department

Table 2.1
MLSOs By Department

Department	1998	1999	2000	2001	Change 1998- 2001
Haematology	107	115	119	120	+12%
Microbiology	71	74	73	76	+7%
Biochemistry	71	70	70	69	-3%
Bacteriology	59	57	61	69	+17%
Clinical Chemistry	51	53	56	56	+10%
Blood Transfusion Service	30	33	33	33	+10%
Cytopathology	28	26	26	26	-7%
Histopathology	22	24	23	24	+9%
General	26	27	21	20	-23%
Pathology	19	19	22	20	+5%
Cytology	7	8	8	8	+14%
Histo/Cytopathology	4	4	6	7	+75%
Tissue Typing	4	4	6	7	+75%
Immunology	4	6	5	5	+25%
Chemical Pathology	2	2	2	2	0%
Medical genetics	2	2	2	2	0%
Cardiology	0	0	1	1	+100%
Total	507	524	534	545	+7%

Source: HRMS

2.2 MLSOs by Trust by Department

Table 2.2
Trust by Department

Trust	Department	Group Total Count
Belfast City Hospital Trust	Haematology	27
	Histopathology	8
	Bacteriology	27
	Cytopathology	11
	Medical Genetics	2
	Clinical Chemistry	27
	Tissue Typing	7
	Group Total	109
Green Park Trust	Haematology	4
	Microbiology	1
	General	5
	Cardiology	1
	Biochemistry	2
	Group Total	13
Ulster Hospitals & Community Trusts	Haematology	6
	General	1
	Biochemistry	10
	Bacteriology	19
	Group Total	36
RG Hospital Group Trust	Haematology	23
	Microbiology	13
	Immunology	4
	General	6
	Pathology	20
	Biochemistry	26
	Bacteriology	22
	Cytopathology	2
Group Total	116	
Mater Infirmorum Hospital Trust	Haematology	1
	Immunology	1
	General	8
	Bacteriology	1
	Clinical Chemistry	1
	Group Total	12
Blood Transfusion Service	Blood Transfusion Service	33

	Group Total	33
Causeway	Haematology	6
	Microbiology	8
	Clinical Chemistry	7
	Group Total	21
United Hospital Group	Haematology	21
	Histopathology	7
	Microbiology	22
	Cytopathology	9
	Clinical Chemistry	21
	Group Total	80
Craigavon/Banbridge Hospital	Haematology	11
	Histopathology	3
	Microbiology	14
	Biochemistry	12
	Cytopathology	4
	Histo/Cytopathology	7
	Group Total	51
Altnagelvin HSS Trust	Haematology	10
	Histopathology	6
	Microbiology	12
	Biochemistry	12
	Cytology	8
	Group Total	48
Sperrin/Lakeland HSS Trust	Chemical Pathology	2
	Haematology	11
	Microbiology	6
	Biochemistry	7
	Group Total	26

2.3 MLSOs by Grade and Gender

Table 2.3
MLSOs By Grade and Gender

Grade	1998	1999	2000	2001	% Change	2001 Male	2001 Female
MLSO 1	102	121	126	143	+28%	26%	74%
MLSO 1+	15	15	13	13	-15%	61%	39%
MLSO 1++	49	44	37	26	-88%	39%	61%
MLSO 1+++	10	10	13	12	+17%	33%	67%
Sub-total	176	190	189	194	+9%	40%	60%
MLSO 2	118	117	109	117	-1%	43%	57%
MLSO 2+	29	30	36	38	+24%	53%	47%
MLSO 2++	57	65	60	55	-4%	47%	53%
MLSO 2+++	16	13	24	22	+27%	64%	36%
Sub-total	220	225	229	232	+5%	52%	48%
MLSO 3	40	37	43	46	+13%	72%	28%
MLSO 3+	2	2	3	2	0%	100%	0%
MLSO 3++	29	31	32	31	+6%	77%	23%
MLSO 3+++	9	9	7	7	-29%	86%	14%
Sub-total	80	79	85	86	+7%	84%	16%
MLSO 4	18	17	18	20	+10%	90%	10%
MLSO 4++	9	9	8	8	-13%	75%	25%
MLSO 4+++	4	4	5	5	+20%	100%	0%
Sub-total	31	30	31	33	+6%	88%	12%
Group Total	507	524	534	545	+7%	48%	52%

Source: HRMS

2.4 MLSOs by Trust

Table 2.4
MLSOs By Trust 1998-2001

Trust	1998	1999	2000	2001	% Change 1998- 2001
Royal Group Hospitals Trust	114	116	119	116	+2%
Belfast City Hospital Trust	90	88	99	109	+21%
United Hospitals Group	74	81	80	80	+8%
Craigavon/Banbridge Hospital	57	56	53	51	-11%
Altnagelvin HSS Trust	44	45	46	48	+9%
Ulster Hospitals & Comm Trusts	32	32	37	36	+13%
Blood Transfusion Service	30	33	33	33	+10%
Sperrin/Lakeland HSS Trust	22	23	22	26	+18%
Causeway	19	21	21	21	+11%
Green Park Trust	14	18	11	13	-7%
Mater Infirmorium Hospital Trust	11	11	13	12	+9%
Total	507	524	534	545	+7%

Source: HRMS

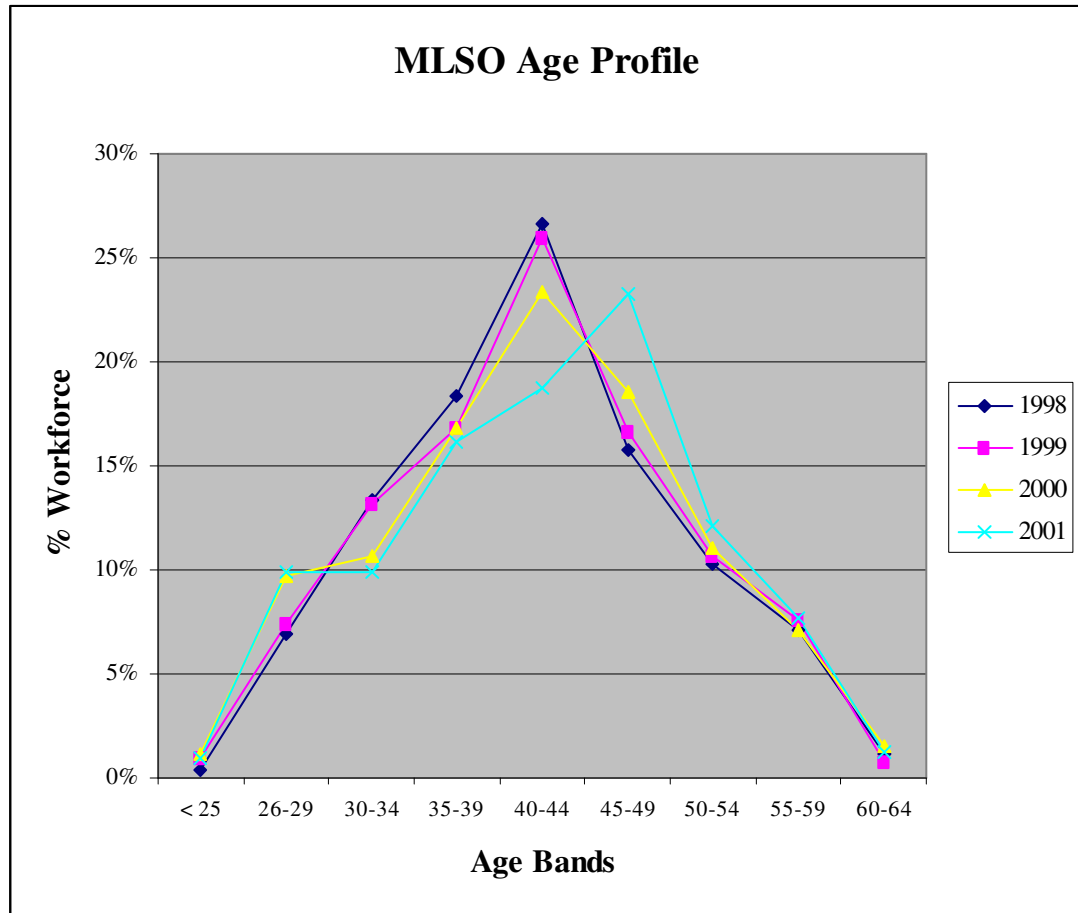
2.5 MLSOs by Age

Table 2.5
MLSOs By Age (2001)

Age Bands	Number	Per cent
< 25	5	1%
26 – 29	54	10%
30 – 34	54	10%
35 – 39	88	16%
40 – 44	102	19%
45 – 49	127	23%
50 – 54	66	12%
55 – 59	42	8%
60 – 64	7	1%
Total	545	100%

Source: HRMS

Figure 2.1
MLSO Age Profile



Source: HRMS

2.6 MLSOs by Gender

Table 2.6
MLSO Gender Profile

Year	Female	% Female	Male	% Male	Total
1998	239	47%	268	53%	507
1999	258	49%	266	51%	524
2000	272	51%	262	49%	534
2001	282	52%	263	48%	545

Source: HRMS

2.7 Part-Time Working Among MLSOs

Table 2.7

Part-Time Working 1998-2001

	1998	1999	2000	2001
Number Working Part-Time	64	74	71	78
% Total Workforce	13%	14%	13%	14%
% Part-time Workers who are women	95%	92%	90%	91%
% Women in Workforce Working Part-time	26%	26%	24%	25%

Source: HRMS

2.8 Trainee MLSOs

Table 2.8

Trainee MLSOs

	1998	1999	2000	2001	% Change 1998- 2001	2001 Female	2001 Male
Trainee MLSO	31	51	48	55	+77%	73%	27%

Source: HRMS

3. MLAS

3.1 MLAs by Department

Table 3.1
MLAs by Department

	1998	1999	2000	2001	% Change
Haematology	16	12	19	23	+44%
Histopathology	4	5	4	6	+50%
Microbiology	13	16	12	13	0%
Immunology	1	0	1	1	0%
General	7	9	7	7	0%
Pathology	4	4	3	4	0%
Cardiology	0	1	1	0	0%
Biochemistry	9	12	12	11	+22%
Blood Transfusion Service	8	12	15	13	+63%
Cytology	1	1	1	1	0%
Bacteriology	19	18	18	21	+11%
Cytopathology	0	0	0	1	+100%
Medicalgenetics	4	5	4	4	0%
Histo/Cytopathology	2	2	2	1	-50%
Clinical Chemistry	10	12	10	9	-10%
Tissue Typing	1	2	2	2	+100%
Respiratory Investigation	0	0	0	1	+100%
Group Total	99	111	111	118	+19%

Source: HRMS

3.2 MLAs by Trust and Department

Table3.2

Department by Trust

Trust	Department	Group Total Count
Belfast City Hospital Trust	Haematology	0
	Histopathology	1
	Bacteriology	12
	Cytopathology	1
	Medicalgenetics	4
	Clinical Chemistry	5
	Tissue Typing	2
	Respiratory Investigation	1
	Group Total	26
Green Park Trust	General	2
	Group Total	2
Ulster Hospitals & Community Trusts	Biochemistry	2
	Bacteriology	5
	Group Total	7
RG Hospital Group Trust	Haematology	3
	Microbiology	0
	Immunology	1
	General	1
	Pathology	4
	Biochemistry	5
	Bacteriology	4
	Physiotherapy	0
	Group Total	18
Mater Infirmorum Hospital Trust	Haematology	6
	General	1
	Group Total	7
Blood Transfusion Service	Blood Transfusion Service	13
	Group Total	13
Causeway	Microbiology	2
	Group Total	2
United Hospital Group	Haematology	1

	Histopathology	0
	Microbiology	5
	Clinical Chemistry	3
	Group Total	9
Craigavon / Banbridge Hospital	Haematology	5
	Histopathology	1
	Microbiology	5
	General	3
	Biochemistry	4
	Histo/Cytopathology	1
	Group Total	19
Altnagelvin HSS Trust	Haematology	3
	Histopathology	4
	Microbiology	1
	Biochemistry	0
	Cytology	1
	Clinical Chemistry	1
	Group Total	10
Sperrin/Lakeland HSS Trust	HAEMATOLOGY	5
	Group Total	5

3.3 MLAs by Grade

Table 3.3
MLAs by Grade and Gender

	1998	1999	2000	2001	% Change	2001 Male	2001 Female
Medical Lab Asst	95	100	105	109	+15%	38%	62%
Med Lab Asst ++	2	6	3	6	+200%	50%	50%
Medical Lab Asst +++	2	5	3	3	+50%	33%	67%
Group Total	99	111	111	118	+19%	38%	62%

Source: HRMS

3.4 MLAs by Trust

Table 3.4
MLAs by Trust

	1998	1999	2000	2001	% Change
Belfast City Hosp Trust	24	24	21	26	+8%
Green Park Trust	3	1	2	2	-33%
Ulster Hospitals & Comm Trusts	4	6	5	7	+75%
RG Hosp Group Trust	22	20	20	18	-18%
Mater Infirmorum Hospital Trust	4	6	3	7	+75%
Blood Transfusion Service	8	12	15	13	+63%
Causeway	3	2	2	2	-33%
United Hosp Group	9	11	10	9	0%
Armagh and Dungannon	1	1	1	0	-100%
C-avon/B-bridge Hosp	10	17	18	19	+90%
Altnagelvin HSS Trust (Hospital)	11	11	10	10	-9%
Sperrin/Lakeland HSS Trust	0	0	4	5	+500%
Group Total	99	111	111	118	+19%

Source: HRMS

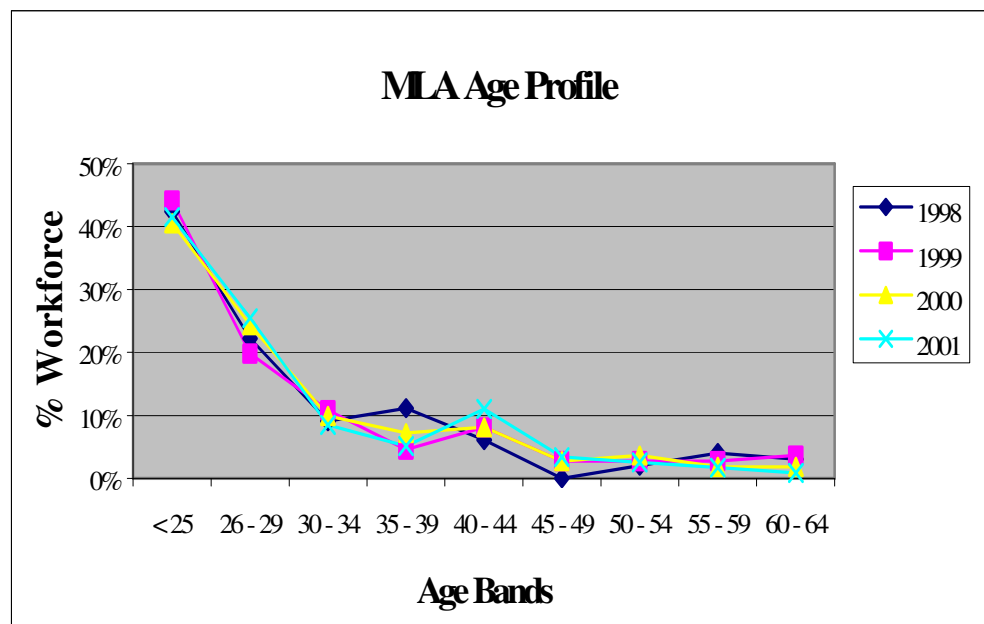
3.5 MLAs by Age

Table 3.5
MLAs By Age (2001)

Age Bands	Number	Per cent
< 25	49	42%
26 – 29	30	25%
30 – 34	10	8%
35 – 39	6	5%
40 - 44	13	11%
45 - 49	4	3%
50 - 54	3	3%
55 - 59	2	2%
60 - 64	1	1%
Total	118	100%

Source: HRMS

Figure 3.1
MLA Age Profile



Source: HRMS

3.6 MLAs by Gender

Table 3.6
MLAs By Gender (2001)

	Female	% Female	Male	% Male	Total
1998	65	66%	34	34%	99
1999	69	62%	42	38%	111
2000	68	61%	43	39%	111
2001	73	62%	45	38%	118

Source: HRMS

3.7 Part- time Working Among MLAs

Table 3.7
Part-time Working in MLAs

	1998	1999	2000	2001
Working Part-time	11	14	10	11
% Total Workforce	11%	13%	9%	9%
% Part-time Workers who are women	73%	86%	80%	82%
% Women in Work force working Part-time	12%	17%	12%	12%

Source: HRMS

4. MTOS

4.1 MTOs by Department

Table 4.1
MTOs by Department

	1998	1999	2000	2001	% Change 1998-2001
Cardiology	78	77	80	88	+13%
Audiology	50	50	46	52	+4%
Medical Physics	37	36	41	42	+14%
General	29	28	25	26	-10%
Pathology	13	13	13	18	+38%
Theatre	20	19	17	18	-10%
Cardiology/Echocard	12	12	11	12	0%
EEG	10	9	11	11	+10%
Prosthetics/Orthotics	8	10	8	10	+25%
Post-Mortem Room	10	8	8	8	-20%
Renal	7	8	8	8	+14%
Respiratory Investigation	2	3	3	4	+100%
Medical Genetics	0	0	1	3	+300%
Biochemistry	0	0	0	2	+200%
Physiotherapy	0	2	2	2	+200%
Haematology	0	0	1	1	+100%
Orthodontics	1	1	0	0	-100%
Total	277	277	276	306	+10%

Source: HRMS

Note: RMPA staffing data was not fully included in HRMS until 1999. 1998 data supplied by RMPA

4.2 MTOs by Trust and Department

Table 4.2

Department by Trust

Trust	Department	Group Total Count
Belfast City Hosp Trust	Audiology	6
	Cardiology	14
	Renal	4
	EEG	3
	Medical Genetics	3
	Theatre	3
	Respiratory Investigation	4
	Group Total	37
Green Park Trust	Medical physics	1
	Cardiology	2
	Prosthetics / Orthotics	8
	Group Total	11
Regional Med Physics Agency	Medical physics	37
	Group Total	37
Ulster Hospitals & Community Trusts	Post-Mortem Room	2
	Audiology	4
	Cardiology	8
	Theatre	9
	Group Total	23
RG Hospital Group Trust	General	24
	Pathology	4
	Audiology	12
	Cardiology	42
	Eeg	5
	Physiotherapy	2
	Group Total	89
Mater Infirmorum Hospital Trust	Medicalphysics	2
	Audiology	2
	Cardiology	1
	Blood Transfusion Service	1
	Cardiology/Echocard	1
	Group Total	7
N & W Belfast	Prosthetics/Orthotics	2

Community Trust	Group Total	2
Down & Lisburn Trust	Audiology	2
	Theatre	1
	Group Total	3
Provider Support	General	1
	Group Total	1
Causeway	Post-Mortem Room	1
	Cardiology	3
	Theatre	3
	Group Total	7
United Hosp Group	Pathology	1
	Post-Mortem Room	2
	Audiology	8
	Theatre	1
	Cardiology/Echocard	11
	Group Total	23
Armagh and Dungannon	Audiology	1
	Group Total	1
C-avon / B-bridge Hosp	Medicalphysics	2
	Pathology	1
	Post-Mortem Room	3
	Audiology	4
	Cardiology	8
	Eeg	3
	Theatre	1
	Group Total	22
Newry & Mourne	Audiology	5
	Renal	1
	Group Total	6
Westcare Business Services	General	1
	Group Total	1
Altnagelvin HSS Trust	Pathology	12
	Audiology	4
	Cardiology	5
	Biochemistry	2
	Group Total	23

Sperrin/Lakeland HSS Trust	Haematology	1
	Audiology	4
	Cardiology	5
	Renal	3
	Group Total	13

Source: HRMS

4.3 MTOs by Grade

Table 4.3
MTOs by Grade and Gender

	1998	1999	2000	2001	% change 1998- 2001	2001 Female	2001 Male
MTO1	28	20	22	32	+19%	75%	25%
MTO1+	1	1	0	0	-100%	0%	0%
MTO1+++	0	1	1	0	0%	0%	0%
Sub-total MTO1	29	22	23	32	+10%	75%	25%
MTO2	59	53	49	53	-10%	59%	41%
MTO2	3	6	6	3	0%	67%	33%
MTO2++	2	2	2	1	-50%	0%	100%
MTO2+++	2	4	2	4	+100%	0%	100%
Sub-total MTO2	66	65	59	61	-8%	31%	69%
MTO3	98	98	99	110	+12%	57%	43%
MTO3+	3	4	5	4	+33%	25%	75%
MTO3++	3	6	7	7	+133%	57%	43%
MTO3+++	3	2	1	0	-100%	0%	0%
Sub-total MTO3	107	110	112	121	+13%	47%	53%
MTO4	47	49	51	56	+19%	59%	41%
MTO4+	2	1	1	2	0%	100%	0%
MTO4++	4	4	4	4	0%	25%	75%
MTO4+++	4	6	5	4	0%	50%	50%
Sub-total MTO4	57	60	61	66	+16%	59%	41%
MTO5	16	17	17	22	+38%	59%	41%
MTO5++	1	1	1	1	0%	0%	100%
MTO5+++	1	2	3	3	+200%	67%	33%
Sub-total MTO5	18	20	21	26	+44%	42%	58%
Total	277	277	276	306	+10%	58%	42%

Source: HRMS

Note: RMPA staffing data was not fully included in HRMS until 1999. 1998 data supplied by RMPA

4.4 MTOs by Trust

Table 4.4
MTOs by Trust

	1998	1999	2000	2001	% Change 1998-2001
Royal Group Hospitals Trust	81	78	82	89	+10%
Belfast City Hosp Trust	30	31	29	37	+23%
Regional Med Physics Agency	35	34	38	37	+6%
Ulster Hospitals & Community Trusts	26	22	23	23	-12%
United Hosp Group	26	24	22	23	-12%
Altnagelvin HSS Trust (Hospital)	18	18	16	23	+28%
C-avon/B-bridge Hosp	16	18	19	22	+38%
Sperrin/Lakeland HSS Trust	10	11	11	13	+30%
Green Park Trust	11	13	9	11	0%
Mater Infirmorum Hospital Trust	4	6	6	7	+75%
Causeway	6	7	6	7	+17%
Newry & Mourne	5	5	5	6	+20%
Down & Lisburn Trust	1	2	2	3	+200%
N & W Belfast Community Trust	1	1	1	2	+100%
Provider Support	1	1	1	1	0%
Armagh and Dungannon	5	5	5	1	-80%
Westcare Business Services	1	1	1	1	0%
Total	277	277	276	306	+10%

Source: HRMS

Note: RMPA staffing data was not fully included in HRMS until 1999. 1998 data supplied by RMPA

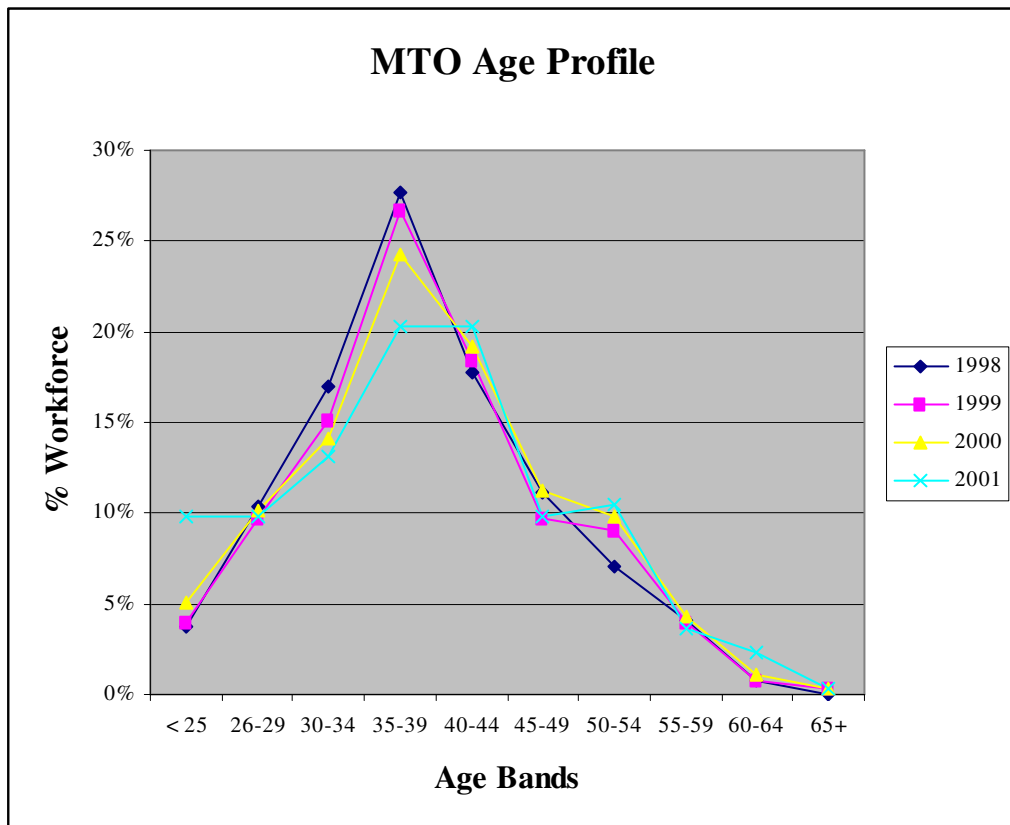
4.5 MTOs by Age

Table 4.5
MTOs by Age (2001)

Age Bands	Number	Per cent
< 25	30	10%
26 - 29	30	10%
30 - 34	40	13%
35 - 39	62	20%
40 - 44	62	20%
45 - 49	30	10%
50 - 54	32	10%
55 - 59	11	4%
60 - 64	7	2%
65+	1	0%
Unknown	1	0%
Total	306	100%

Source: HRMS

Figure 4.1
MTO Age Profile 1998-2001



Source: HRMS

4.6 MTOs by Gender

Figure 4.6
MTOs by Gender

Year	Female	% Female	Male	% Male	Total
1998	161	58%	116	42%	277
1999	157	57%	120	43%	277
2000	158	57%	118	43%	276
2001	177	58%	129	42%	306

Source: HRMS

4.7 Part-Time Working Among MTOs

Figure 4.7
Part-time Working Among MTOs

	1998	1999	2000	2001
Number working part-time	48	50	48	53
% Total workforce	20%	18%	17%	17%
% Part-time workers female	92%	98%	98%	98%
% Women in workforce working part-time	30%	31%	30%	29%

Source: HRMS (1998 data excludes RMPA)

4.8 Trainee MTOs

The number of Trainee MTOs has increased slightly between 1998-2001 from 9 to 12. The largest proportion of these trainee staff are in Cardiology (5 in 2001), either at the Belfast City Hospital Trust or the Royal Group of Hospitals Trust. Departmental data indicates that other areas employing Trainee MTOs in 2001 were Medical Physics (1), Audiology (2), Cytopathology (1), Respiratory Investigation (1), EEG (1) and General (1).

4.9 ATOs

Figure 4.9

ATOs by Specialty

	2001
Cardiology	22
Renal	7
Cardiology/Echocard	6
General	5
Audiology	5
Theatre	2
Haematology	2
Orthodontics	1
Medicalphysics	1
Total	51

Source: HRMS

5. CLINICAL SCIENTISTS

5.1 Clinical Scientists by Department

Table 5.1
Clinical Scientists by Department

	1998	1999	2000	2001	% Change 1998-2001
Medical Physics	21	20	22	28	+33%
Medical Genetics	16	16	16	15	-6%
Biochemistry	9	9	8	10	+11%
Haematology	5	5	5	6	+20%
General	7	8	7	6	-14%
Bacteriology	7	7	7	6	-14%
Tissue Typing	6	5	5	5	-17%
Microbiology	4	4	4	4	0%
Pathology	2	2	4	4	+100%
Clinical Chemistry	4	4	4	4	0%
Blood Transfusion Service	2	2	2	2	0%
Immunology	1	1	1	1	0%
Audiology	1	1	2	1	0%
Respiratory Investigation	1	1	1	1	0%
Mental Health	1	1	0	0	-100%
Total	87	86	88	93	+7%

Source: HRMS

Note: RMPA staffing data was not fully included in HRMS until 1999. 1998 data supplied by RMPA

5.2 Clinical Scientists by Trust and Department

Table 5.2
Trust by Department

Trust	Department	Group Total Count
Belfast City Hospital Trust	Haematology	5
	Bacteriology	4
	Medical Genetics	15
	Clinical Chemistry	3
	Tissue Typing	5
	Respiratory Investigation	1
	Group Total	33
Regional Med Physics Agency	Medical Physics	28
	Group Total	28
Ulster Hospitals & Community Trusts	Biochemistry	1
	Group Total	1
RG Hospital Group Trust	Haematology	1
	Microbiology	4
	Immunology	1
	General	6
	Pathology	4
	Audiology	1
	Biochemistry	8
	Bacteriology	2
	Group Total	27
Blood Transfusion Service	Blood Transfusion Service	2
	Group Total	2
United Hospital Group	Clinical Chemistry	1
	Group Total	1
Altnagelvin HSS Trust	Biochemistry	1
	Group Total	1

5.3 Clinical Scientists by Grade

Table 5.3
Clinical Scientists by Grade and Gender

	1998	1999	2000	2001	% Change 1998-2001	2001 Female	2001 Male
Clinical Scientist A	13	13	11	8	-38%	63%	37%
Clinical Scientist B	56	56	59	67	+20%	42%	58%
Clinical Scientist C	17	16	17	16	-6%	25%	75%
Clinical Scientist C ++	0	0	0	1	+100%	0%	100%
Clinical Scientist C+++++	1	1	1	1	0%	0%	100%
Total	87	86	88	93	+7%	40%	60%

Source: HRMS

5.4 Clinical Scientists by Trust

Table 5.4
Clinical Scientists by Trust

	1998	1999	2000	2001	% Change 1998-2001
Belfast City Hosp Trust	35	36	35	33	-6%
Regional Med Physics Agency	21	20	22	28	+33%
RG Hosp Group Trust	26	25	26	27	+4%
Blood Transfusion Service	2	2	2	2	0%
United Hosp Group	0	0	0	1	+100%
Ulster Hospitals & Community Trusts	1	1	1	1	0%
Altnagelvin HSS Trust (Hospital)	0	0	1	1	+100%
Mater Infirmorum Hospital Trust	1	1	0	0	-100%
Green Park Trust	1	1	1	0	-100%
Group Total	87	86	88	93	+7%

Source: HRMS

Note: RMPA staffing data was not fully included in HRMS until 1999. 1998 data supplied by RMPA

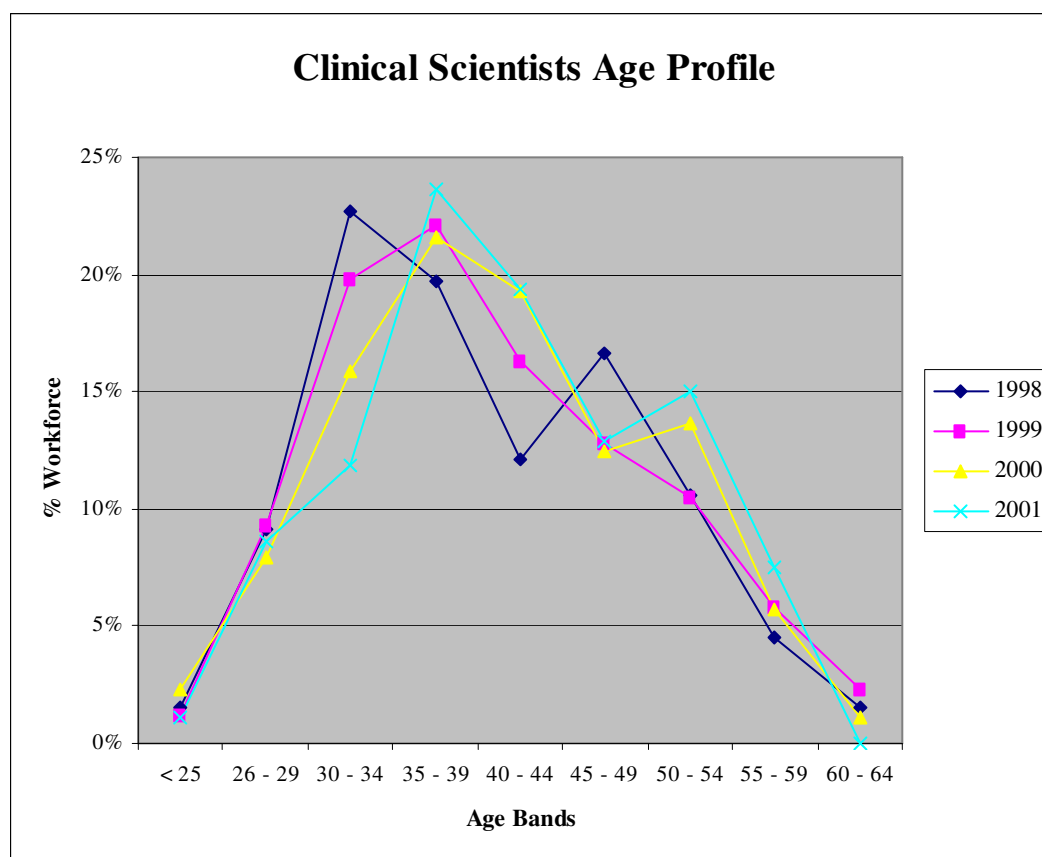
5.5 Clinical Scientists by Age

Table 5.5
Clinical Scientists by Age (2001)

Age Bands	Number	Per cent
< 25	1	1%
26 - 29	8	9%
30 - 34	11	12%
35 - 39	22	24%
40 - 44	18	19%
45 - 49	12	13%
50 - 54	14	15%
55 - 59	7	8%
60 - 64	0	0%
Total	93	100%

Source: HRMS

Figure 5.1
Clinical Scientists Age Profile 1998-2001



Source: HRMS

5.6 Clinical Scientists by Gender

Table 5.6
Clinical Scientists by Gender

Year	Female	% Female	Male	% Male	Total
1998	34	39%	53	61%	87
1999	33	38%	53	62%	86
2000	31	35%	57	65%	88
2001	37	40%	56	60%	93

Source: HRMS

5.7 Part-Time Working Among Clinical Scientists

Table 5.7
Part-time Working Among Clinical Scientists

	1998	1999	2000	2001
Number working part-time	6	6	8	9
% Total workforce	9%	7%	9%	10%
% Part-time workers who are women	83%	100%	100%	100%
% Women in workforce working part-time	17%	18%	26%	24%

Source: HRMS (1998 figures exclude RMPA)