

Statistics Release



Department of
**Health, Social Services
and Public Safety**

An Roinn
**Sláinte, Seirbhísí Sóisialta
agus Sábháilteachta Poiblí**

www.dhsspsni.gov.uk

1st June 2006

Northern Ireland Waiting Lists – March 2006

This statistics release gives details of the number of people waiting for inpatient or outpatient treatment at hospitals in Northern Ireland at the end of March 2006, the most recent quarter for which figures are available.

Inpatients

Headline Totals – Table 1

The total number of patients waiting to be admitted to hospitals in Northern Ireland at the end of March 2006 stood at 41,495.

Over the quarter, comparing the end of March 2006 with the end of December 2005 (44,740), the total number waiting has decreased by 3,245 (-7.3%).

Over the year, comparing the end of March 2006 with the end of March 2005 (47,300), the total number waiting decreased by 5,805 (-12.3%).

Table 1: Quarterly Waiting Lists – March 2006

Waiting for:	Quarter Ending March 2006	Change compared with end of previous quarter	Change compared with end same quarter – previous year
Ordinary Admissions	15,412	-1,733	-3,494
Day case Admissions	26,083	-1,512	-2,311
Total Waiting	41,495	-3,245	-5,805

Source: CHI

Detailed notes and definitions are provided in the Technical Notes.



A National Statistics Publication

National Statistics are produced to high professional standards set out in the National Statistics Code of Practice. They undergo regular quality assurance reviews to ensure that they meet customer needs. They are produced free from any political interference.

Numbers Waiting for Ordinary Admission and Day Case Treatment

People on the inpatient waiting list in Northern Ireland can be waiting for admission to hospital as day cases or as ordinary admissions.

Of the 41,495 people waiting for admission to hospital at the end of March 2006, 15,412 (37.1%) were waiting for ordinary admission and 26,083 (62.9%) were waiting for day case admission (Table 1).

Since the end of December 2005, the number of cases waiting for ordinary admission has decreased by 1,733 (-10.1%) and the number waiting for day case admission has decreased by 1,512 (-5.5%).

In comparison with March 2005, the number of cases waiting for ordinary admission has decreased by 3,494 (-18.5%) and the number waiting for day case admission has decreased by 2,311 (-8.1%).

Waiting Times for Ordinary Admission and Day case Treatment¹ – Tables 2a & 2b

At the end of March 2006, the number of patients waiting 12 months and over was 3 or 0.007% of the total waiting. Of those, the number waiting 18 months and over at the end of March 2006 stood at 2 or 0.005% of the total waiting.

Over the quarter, comparing the end of March 2006 with the end of December 2005, the number of people waiting 12 months and over decreased by 1,271 (-99.8%). The number of patients waiting 18 months and over decreased by 293 (-99.3%) over the same period.

Over the year, comparing the end of March 2006 with the end of March 2005, the number of people waiting 12 months and over decreased by 3,995 (-99.9%). Over the same period the number of people waiting 18 months and over decreased by 762 (-99.7%).

Table 2a Patients Waiting 12 Months and Over¹ – March 2006

Waiting for:	Quarter Ending March 06	Change compared with end of previous quarter	Change compared with end same quarter - previous year
Ordinary admissions	2	-790	-2,629
Day case admissions	1	-481	-1,366
Total Waiting	3	-1,271	-3,995

Source: CHI

¹ Refer to Technical Notes – point 3.

Table 2b Patients Waiting 18 Months and Over¹ – March 2006

Waiting for:	Quarter Ending March 06	Change compared with end of previous quarter	Change compared with end same quarter - previous year
Ordinary admissions	1	-251	-658
Day case admissions	1	-42	-104
Total Waiting	2	-293	-762

Source: CH1

¹ Refer to Technical Notes – point 3.

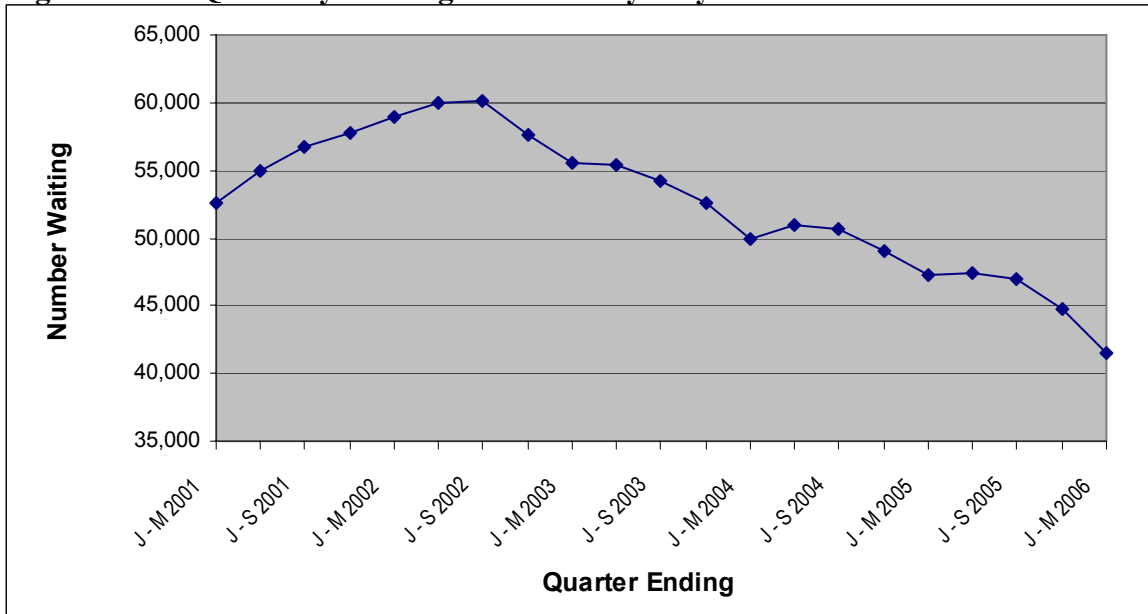
Peak Figures

The end of March 2006 total of 41,495 on the inpatient waiting list represents a decrease of 18,695 (-31.1%) on the peak waiting list figure of 60,190 (end September 2002).

Trends

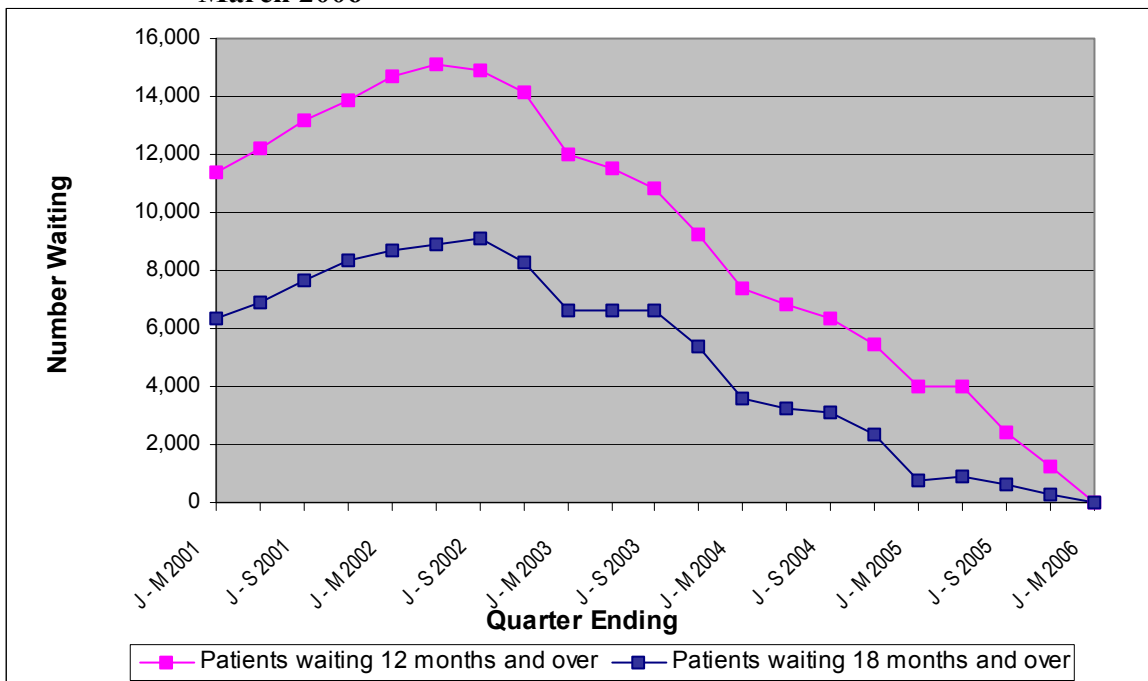
The total number of people waiting for inpatient treatment was on a generally upward trend from March 2001, and rose to peak in September 2002. There has been an overall downward trend since this peak. The total number of people waiting increased slightly during the quarter ending June 2005, but has decreased in the last three quarters (Figure 1). Patients waiting 12 months and over have been generally on a downward trend since September 2002 as have patients waiting 18 months and over. At 31 March 2006 there were three patients waiting 12 months and over, of which two were waiting 18 months and over (Figure 2).

Figure 1 Quarterly Waiting Lists – Five yearly trends March 2001 – March 2006



Source: CH1

Figure 2 Quarterly Waiting Times¹ - Five yearly trends March 2001 – March 2006



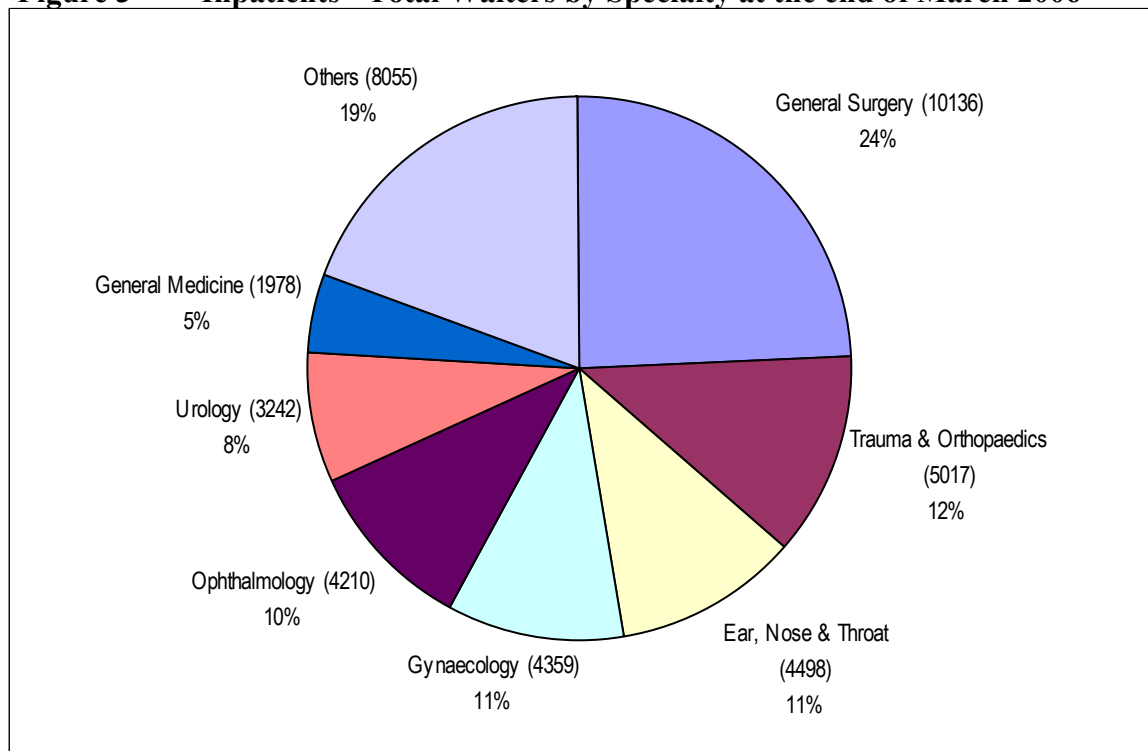
Source: CH1

¹ Refer to Technical Notes – point 3.

Inpatients Waiting by Specialty

The overwhelming majority of those waiting (81%) were within seven specialties: General Surgery; Trauma and Orthopaedic Surgery (T&O); Ear, Nose and Throat (ENT); Gynaecology (Gynae); Ophthalmology, Urology and General Medicine (Figure 3). There were three patients waiting 12 months and over, one in each of the Ophthalmology, Urology and Cardiology specialties.

Figure 3 Inpatients - Total Waiters by Specialty at the end of March 2006



Source: CHI

Inpatient Waiting Time by Specialty

Waiting times for inpatients by specialty are shown in Tables 3a and 3b. Overall 99.99% of those waiting for admission were waiting less than 12 months. More than 99% of patients were waiting for treatment in the Acute Services Programme of Care.

Table 3a Number of Patients Waiting for Admission by Months Waiting and Specialty – March 2006

Specialty	Patients Waiting for Admission by Months Waiting									Total Number of Patients Awaiting Admission
	0 - 2	3 - 5	6 - 8	9 - 11	12 - 14	15 - 17	18 - 20	21 - 23	24 +	
General Surgery	5,910	2,412	1,228	586	0	0	0	0	0	10,136
Trauma & Orthopaedics	1,936	1,762	1,003	316	0	0	0	0	0	5,017
Ear, Nose & Throat	2,587	1,209	524	178	0	0	0	0	0	4,498
Gynaecology	2,620	1,043	501	195	0	0	0	0	0	4,359
Ophthalmology	2,803	1,004	265	137	0	0	0	0	1	4,210
Urology	2,117	764	282	78	0	0	0	0	1	3,242
General Medicine	1,448	383	143	4	0	0	0	0	0	1,978
Gastroenterology	1,285	430	127	47	0	0	0	0	0	1,889
Cardiology	713	331	122	42	1	0	0	0	0	1,209
Plastic Surgery	516	332	191	77	0	0	0	0	0	1,116
Pain Management	364	212	78	28	0	0	0	0	0	682
Paediatric Surgery	269	203	76	69	0	0	0	0	0	617
Rheumatology	379	104	6	2	0	0	0	0	0	491
Oral Surgery	298	103	43	35	0	0	0	0	0	479
Dermatology	260	98	47	17	0	0	0	0	0	422
Cardiac Surgery	154	85	0	0	0	0	0	0	0	239
Neurology	106	52	26	18	0	0	0	0	0	202
Neurosurgery	50	45	33	12	0	0	0	0	0	140
Thoracic Surgery	56	17	5	0	0	0	0	0	0	78
General Practice (Other)	59	3	1	1	0	0	0	0	0	64
Other	363	43	15	6	0	0	0	0	0	427
All Specialties	24,293	10,635	4,716	1,848	1	0	0	0	2	41,495

Table 3b Percentage of Patients Waiting for Admission by Months Waiting and Specialty – March 2006²

Specialty	Patients Waiting for Admission by Months Waiting								
	0 - 2	3 - 5	6 - 8	9 - 11	12 - 14	15 - 17	18 - 20	21 - 23	24 +
General Surgery	58.3%	23.8%	12.1%	5.8%	0.0%	0.0%	0.0%	0.0%	0.0%
Trauma & Orthopaedics	38.6%	35.1%	20.0%	6.3%	0.0%	0.0%	0.0%	0.0%	0.0%
Ear, Nose & Throat	57.5%	26.9%	11.6%	4.0%	0.0%	0.0%	0.0%	0.0%	0.0%
Gynaecology	60.1%	23.9%	11.5%	4.5%	0.0%	0.0%	0.0%	0.0%	0.0%
Ophthalmology	66.6%	23.8%	6.3%	3.3%	0.0%	0.0%	0.0%	0.0%	<0.1%
Urology	65.3%	23.6%	8.7%	2.4%	0.0%	0.0%	0.0%	0.0%	<0.1%
General Medicine	73.2%	19.4%	7.2%	0.2%	0.0%	0.0%	0.0%	0.0%	0.0%
Gastroenterology	68.0%	22.8%	6.7%	2.5%	0.0%	0.0%	0.0%	0.0%	0.0%
Cardiology	59.0%	27.4%	10.1%	3.5%	0.1%	0.0%	0.0%	0.0%	0.0%
Plastic Surgery	46.2%	29.7%	17.1%	6.9%	0.0%	0.0%	0.0%	0.0%	0.0%
Pain Management	53.4%	31.1%	11.4%	4.1%	0.0%	0.0%	0.0%	0.0%	0.0%
Paediatric Surgery	43.6%	32.9%	12.3%	11.2%	0.0%	0.0%	0.0%	0.0%	0.0%
Rheumatology	77.2%	21.2%	1.2%	0.4%	0.0%	0.0%	0.0%	0.0%	0.0%
Oral Surgery	62.2%	21.5%	9.0%	7.3%	0.0%	0.0%	0.0%	0.0%	0.0%
Dermatology	61.6%	23.2%	11.1%	4.0%	0.0%	0.0%	0.0%	0.0%	0.0%
Cardiac Surgery	64.4%	35.6%	0.0%	0.0%	0.0%	0.0%	0.0%	0.0%	0.0%
Neurology	52.5%	25.7%	12.9%	8.9%	0.0%	0.0%	0.0%	0.0%	0.0%
Neurosurgery	35.7%	32.1%	23.6%	8.6%	0.0%	0.0%	0.0%	0.0%	0.0%
Thoracic Surgery	71.8%	21.8%	6.4%	0.0%	0.0%	0.0%	0.0%	0.0%	0.0%
General Practice (Other)	92.2%	4.7%	1.6%	1.6%	0.0%	0.0%	0.0%	0.0%	0.0%
Other	85.0%	10.1%	3.5%	1.4%	0.0%	0.0%	0.0%	0.0%	0.0%
All Specialties	58.5%	25.6%	11.4%	4.5%	<0.1%	0.0%	0.0%	0.0%	<0.1%

Source: CH1

²Refer to Technical Notes – point 9

Inpatient Waiting Times by Provider Trust

Waiting times for inpatients by Trust are shown in Table 4.

Table 4 Number of Patients Waiting for Admission by Provider Trust and by Months Waiting – March 2006

Provider Trust	Patients Waiting for Admission by Months Waiting									Total Number of Patients Awaiting Admission
	0 - 2	3 - 5	6 - 8	9 - 11	12 - 14	15 - 17	18 - 20	21 - 23	24 +	
Altnagelvin Group	2,599	1,120	471	240	0	0	0	0	0	4,430
Belfast City Hospital	2,899	1,197	567	195	0	0	0	0	0	4,858
Causeway	1,001	189	22	0	0	0	0	0	0	1,212
Craigavon Area Hospital Group	3,253	1,765	656	362	0	0	0	0	1	6,037
Down Lisburn	852	240	81	55	0	0	0	0	0	1,228
Green Park Healthcare	1,712	1,500	800	202	0	0	0	0	0	4,214
Mater Infirmorum Hospital	1,371	753	303	43	0	0	0	0	1	2,471
Newry & Mourne	605	103	64	12	0	0	0	0	0	784
Royal Group of Hospitals	3,876	1,669	785	402	1	0	0	0	0	6,733
South and East Belfast	82	0	1	0	0	0	0	0	0	83
Sperrin Lakeland	1,120	405	145	6	0	0	0	0	0	1,676
Ulster Community & Hospitals	2,344	763	321	118	0	0	0	0	0	3,546
United Hospitals Group	2,579	931	500	213	0	0	0	0	0	4,223
Total	24,293	10,635	4,716	1,848	1	0	0	0	2	41,495

Source: CHI

Inpatient Completed Waits

Waiting times for completed inpatient waits are shown in Table 5. A total of 41,111 inpatients were admitted to hospital (excluding those who had previously refused an offer of admission) during the March 2006 quarter. 70.2% of patients received their treatment within 3 months of being placed on the waiting list and 96.6% received their treatment within 12 months.

Table 5 Completed Inpatient Waits

Quarter	Time Waiting in Months									Total
	0 - 2	3 - 5	6 - 8	9 - 11	12 - 14	15 - 17	18 - 20	21 - 23	24 +	
J - M 2003	73.6%	12.0%	4.6%	3.1%	2.2%	1.7%	0.9%	0.5%	1.3%	38,987
A - J 2003	73.9%	12.5%	5.2%	3.1%	2.0%	1.2%	0.7%	0.4%	1.0%	38,512
J - S 2003	71.9%	14.1%	5.2%	3.5%	1.7%	1.2%	0.7%	0.4%	1.1%	35,605
O - D 2003	72.7%	12.3%	5.4%	3.7%	2.0%	1.2%	0.9%	0.5%	1.5%	38,906
J - D 2003	73.0%	12.7%	5.1%	3.3%	2.0%	1.3%	0.8%	0.5%	1.2%	152,010
J - M 2004	74.4%	11.6%	4.8%	3.5%	1.9%	1.3%	0.6%	0.5%	1.3%	40,924
A - J 2004	74.6%	11.4%	5.9%	3.1%	1.9%	1.2%	0.6%	0.3%	0.9%	38,507
J - S 2004	73.1%	13.1%	5.4%	3.7%	1.9%	1.1%	0.7%	0.3%	0.7%	37,166
O - D 2004	73.4%	12.3%	5.5%	3.7%	2.3%	1.1%	0.7%	0.4%	0.7%	41,330
J - D 2004	73.9%	12.1%	5.4%	3.5%	2.0%	1.2%	0.6%	0.4%	0.9%	157,927
J - M 2005	72.9%	12.9%	4.8%	3.9%	1.9%	1.6%	0.8%	0.5%	0.7%	39,248
A - J 2005	74.1%	12.5%	6.2%	3.1%	2.0%	1.3%	0.5%	0.1%	0.3%	41,183
J - S 2005	72.0%	12.9%	5.4%	3.8%	2.4%	1.8%	0.9%	0.3%	0.3%	37,094
O - D 2005	72.7%	11.6%	6.1%	5.0%	2.9%	1.0%	0.4%	0.1%	0.2%	40,360
J - D 2005	72.9%	12.5%	5.6%	3.9%	2.3%	1.4%	0.6%	0.3%	0.4%	157,885
J - M 2006	70.2%	13.7%	6.9%	5.8%	2.3%	0.6%	0.2%	0.1%	0.3%	41,111

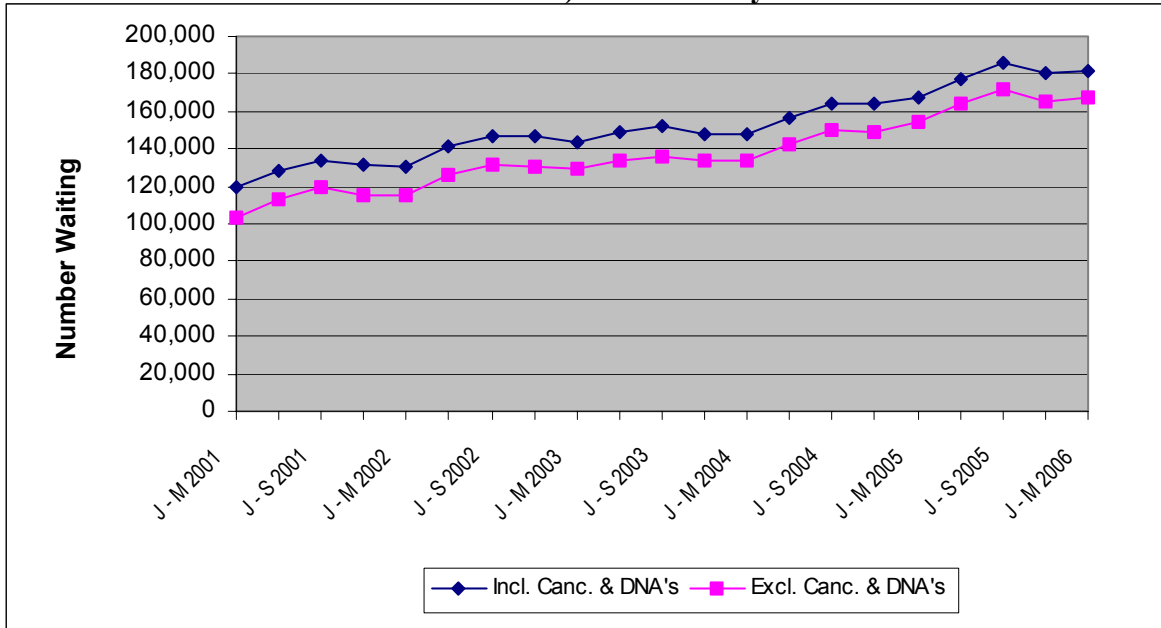
Source: CH2 Part 1

Outpatients

Headline Totals

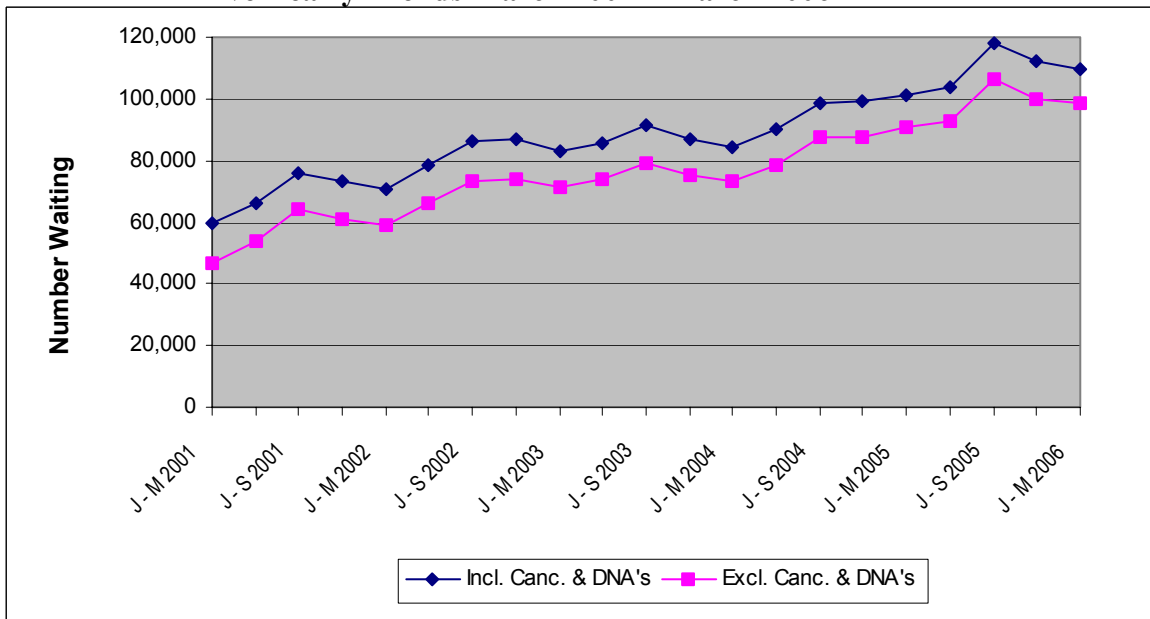
The number of patients waiting for a first outpatient appointment (including cancellations and deferrals) at the end of March 2006 stood at 181,038 representing an increase of 800 (0.4%) over the quarter and an increase of 13,900 (8.3%) compared with the same quarter in the previous year. Corresponding quarterly and annual increases (excluding cancellations and deferrals) were 1.0% and 8.7% respectively. Figure 4 shows five yearly trends in the number of outpatients waiting for a first appointment. Figure 5 shows the same trends information for patients waiting 3 months and over for a first outpatient appointment.

Figure 4 Outpatients Waiting for a First Appointment (including and excluding cancellations and deferrals) – Five Yearly Trends March 2001 – March 2006



Source: CH3 Parts 1 & 2.

Figure 5 Patients waiting 3 months and over - Five Yearly Trends March 2001 – March 2006

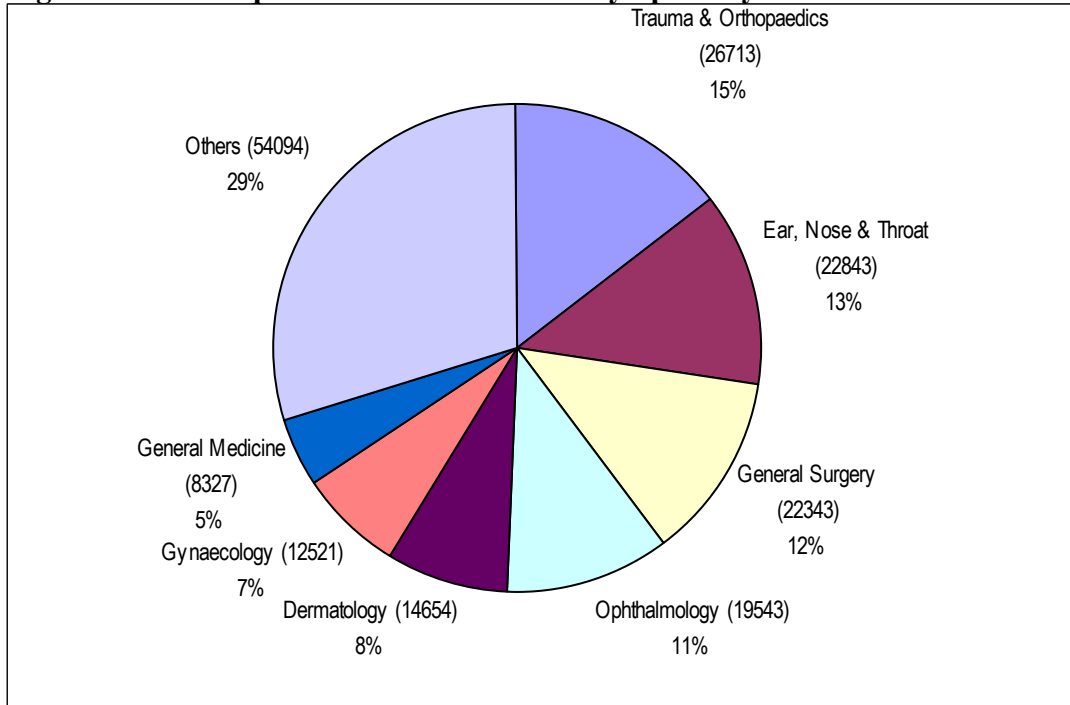


Source: CH3 Parts 1 & 2

Outpatients Waiting by Specialty

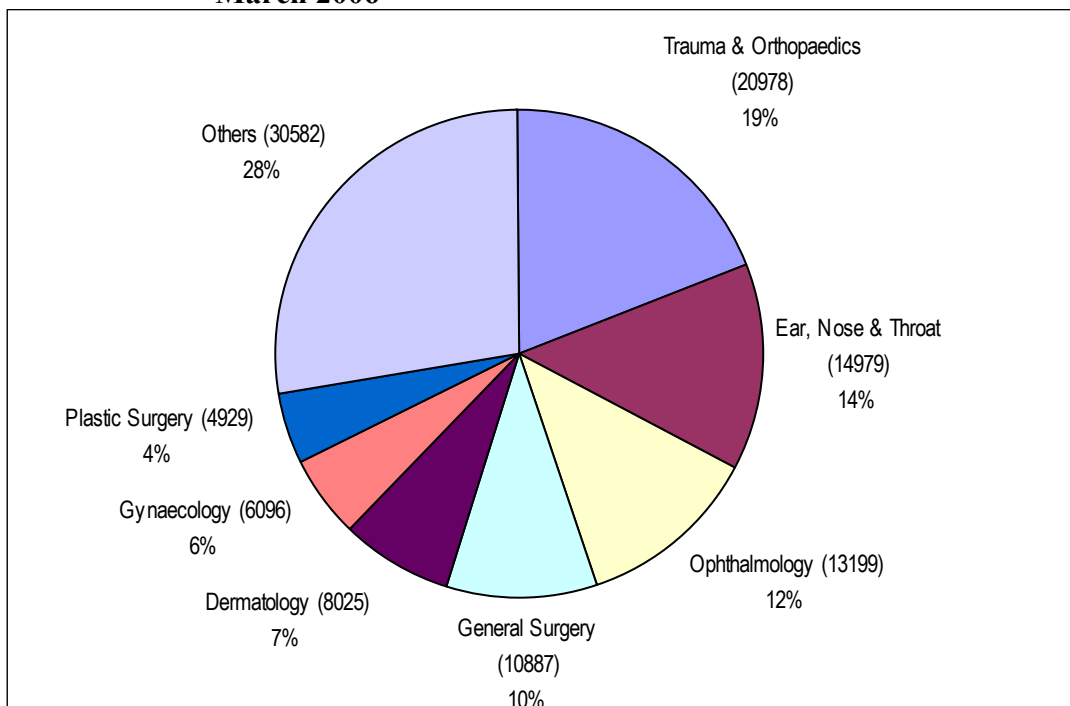
The majority of those waiting (71%) were within seven specialties: Trauma and Orthopaedic Surgery (T&O); Ear, Nose and Throat (ENT); General Surgery; Ophthalmology; Dermatology, Gynaecology (Gynae) and General Medicine (Figure 6a). Figures for patients waiting 3 months and over are shown in Figure 6b. Figures represent the total number waiting for their first outpatient appointment during the March 2006 quarter including those who have cancelled or missed a previous appointment.

Figure 6a Outpatients – Total Waiters by Specialty at the end of March 2006



Source: CH3.

Figure 6b Outpatients – Patients waiting 3 months and over by Specialty at the end of March 2006



Source: CH3.

Outpatient Waiting Time by Specialty

Waiting times for outpatients by specialty are shown in Tables 6a and 6b. The proportion of those waiting less than 12 months ranged from 100.0% in the Genito-Urinary Medicine specialty to 34.6% in Plastic Surgery. Overall four fifths (79.9%) of those waiting for treatment were waiting less than 12 months.

Table 6a Number of Patients Waiting for a First Appointment by Months Waiting and Specialty – March 2006

Specialty	Patients Waiting for an Appointment by Months Waiting									Total Number of Patients Awaiting Appointment
	0 - 2	3 - 5	6 - 8	9 - 11	12 - 14	15 - 17	18 - 20	21 - 23	24 +	
Trauma & Orthopaedics	5,735	3,785	3,357	2,859	2,162	1,695	1,783	1,233	4,104	26,713
Ear, Nose & Throat	7,864	4,681	3,180	2,229	1,337	818	757	500	1,477	22,843
General Surgery	11,456	5,340	2,960	1,395	492	318	197	80	105	22,343
Ophthalmology	6,344	4,309	3,001	2,151	1,147	888	615	378	710	19,543
Dermatology	6,629	3,040	2,073	1,128	516	416	334	169	349	14,654
Gynaecology	6,425	3,176	1,320	694	319	192	194	124	77	12,521
General Medicine	4,051	1,652	890	491	347	241	218	152	285	8,327
Plastic Surgery	650	495	417	366	244	231	244	204	2,728	5,579
Neurology	1,762	1,065	719	582	400	351	288	128	84	5,379
Cardiology	2,457	1,175	551	380	281	248	134	30	76	5,332
Urology	1,743	959	505	351	283	252	186	127	149	4,555
Paediatrics	2,285	777	354	135	63	42	20	25	76	3,777
Rheumatology	1,292	809	565	381	188	186	117	108	98	3,744
Oral Surgery	1,079	484	329	208	158	138	109	97	611	3,213
Mental Illness	1,579	637	182	81	39	22	6	1	3	2,550
Genito-Urinary Medicine	2,410	0	0	0	0	0	0	0	0	2,410
Pain Management	619	416	252	213	119	54	74	47	296	2,090
Restorative Dentistry	316	292	283	169	83	77	75	57	445	1,797
Gastroenterology	669	315	195	107	98	84	44	8	1	1,521
Paediatric Surgery	604	348	342	126	45	11	6	2	28	1,512
Other	5,394	2,060	1,142	759	394	251	172	141	322	10,635
All Specialties	71,363	35,815	22,617	14,805	8,715	6,515	5,573	3,611	12,024	181,038

Source: CH3

Table 6b Percentage of Patients Waiting for a First Appointment by Months Waiting and Specialty – March 2006

Specialty	Patients Waiting for an Appointment by Months Waiting								
	0 - 2	3 - 5	6 - 8	9 - 11	12 - 14	15 - 17	18 - 20	21 - 23	24+
Trauma & Orthopaedics	21.5%	14.2%	12.6%	10.7%	8.1%	6.3%	6.7%	4.6%	15.4%
Ear, Nose & Throat	34.4%	20.5%	13.9%	9.8%	5.9%	3.6%	3.3%	2.2%	6.5%
General Surgery	51.3%	23.9%	13.2%	6.2%	2.2%	1.4%	0.9%	0.4%	0.5%
Ophthalmology	32.5%	22.0%	15.4%	11.0%	5.9%	4.5%	3.1%	1.9%	3.6%
Dermatology	45.2%	20.7%	14.1%	7.7%	3.5%	2.8%	2.3%	1.2%	2.4%
Gynaecology	51.3%	25.4%	10.5%	5.5%	2.5%	1.5%	1.5%	1.0%	0.6%
General Medicine	48.6%	19.8%	10.7%	5.9%	4.2%	2.9%	2.6%	1.8%	3.4%
Plastic Surgery	11.7%	8.9%	7.5%	6.6%	4.4%	4.1%	4.4%	3.7%	48.9%
Neurology	32.8%	19.8%	13.4%	10.8%	7.4%	6.5%	5.4%	2.4%	1.6%
Cardiology	46.1%	22.0%	10.3%	7.1%	5.3%	4.7%	2.5%	0.6%	1.4%
Urology	38.3%	21.1%	11.1%	7.7%	6.2%	5.5%	4.1%	2.8%	3.3%
Paediatrics	60.5%	20.6%	9.4%	3.6%	1.7%	1.1%	0.5%	0.7%	2.0%
Rheumatology	34.5%	21.6%	15.1%	10.2%	5.0%	5.0%	3.1%	2.9%	2.6%
Oral Surgery	33.6%	15.1%	10.2%	6.5%	4.9%	4.3%	3.4%	3.0%	19.0%
Mental Illness	61.9%	25.0%	7.1%	3.2%	1.5%	0.9%	0.2%	0.0%	0.1%
Genito-Urinary Medicine	100.0%	0.0%	0.0%	0.0%	0.0%	0.0%	0.0%	0.0%	0.0%
Pain Management	29.6%	19.9%	12.1%	10.2%	5.7%	2.6%	3.5%	2.2%	14.2%
Restorative Dentistry	17.6%	16.2%	15.7%	9.4%	4.6%	4.3%	4.2%	3.2%	24.8%
Gastroenterology	44.0%	20.7%	12.8%	7.0%	6.4%	5.5%	2.9%	0.5%	0.1%
Paediatric Surgery	39.9%	23.0%	22.6%	8.3%	3.0%	0.7%	0.4%	0.1%	1.9%
Other	50.7%	19.4%	10.7%	7.1%	3.7%	2.4%	1.6%	1.3%	3.0%
All Specialties	39.4%	19.8%	12.5%	8.2%	4.8%	3.6%	3.1%	2.0%	6.6%

Source: CH3.

Outpatient Waiting Times by Provider Trust

Waiting times for outpatients by Trust are shown in Table 7.

Table 7 Number of Patients Waiting for a First Outpatient Appointment by Provider Trust and Months Waiting – March 2006

Provider Trust	Patients Waiting for an Appointment by Months Waiting									Total Number
	0 - 2	3 - 5	6 - 8	9 - 11	12 - 14	15 - 17	18 - 20	21 - 23	24 +	
Altnagelvin Group	8,913	4,454	2,304	1,473	791	459	257	78	92	18,821
Armagh & Dungannon	932	404	262	223	132	90	77	44	39	2,203
Belfast City Hospital	6,484	2,804	1,738	1,148	655	451	266	167	127	13,840
Causeway	2,074	854	516	256	80	42	28	20	29	3,899
Craigavon & Banbridge	190	93	40	17	1	0	0	0	0	341
Craigavon Area Hospital Group	6,561	3,637	2,252	975	457	338	194	91	236	14,741
Down Lisburn	2,760	1,360	919	453	193	160	157	42	121	6,165
Foyle Community	340	150	22	10	12	4	4	2	51	595
Green Park Healthcare	3,245	2,221	1,851	1,513	1,116	800	1,029	589	1,487	13,851
Homefirst Community	475	261	34	19	0	0	0	0	0	789
Mater Infirmorum Hospital	3,425	1,908	1,022	413	133	115	83	16	12	7,127
North and West Belfast	8	21	3	0	0	0	0	0	0	32
Newry & Mourne	3,130	1,231	524	110	27	33	22	14	4	5,095
Royal Group of Hospitals	14,278	6,896	5,301	4,290	2,882	2,266	2,141	1,486	5,092	44,632
South and East Belfast	182	11	7	0	0	0	0	0	0	200
Sperrin Lakeland	2,559	1,086	645	230	29	14	9	7	14	4,593
Ulster Community & Hospitals	9,011	5,125	3,000	1,920	1,049	784	691	650	3,671	25,901
United Hospitals Group	6,796	3,299	2,177	1,755	1,158	959	615	405	1,049	18,213
Total	71,363	35,815	22,617	14,805	8,715	6,515	5,573	3,611	12,024	181,038

Source: CH3

Outpatient Waiting Time by Programme of Care

Waiting times for a first outpatient appointment by programme of care are shown in Table 8. The vast majority (97.0%) of patients were awaiting their first outpatient appointment in the Acute Services Programme of Care.

Table 8 Number of Patients Waiting for a First Appointment by Months Waiting and Programme of Care – March 2006

Programme of Care	Patients Waiting for an Appointment by Months Waiting									Total Number
	0 - 2	3 - 5	6 - 8	9 - 11	12 - 14	15 - 17	18 - 20	21 - 23	24 +	
Acute Services	67,989	34,517	22,190	14,638	8,639	6,476	5,545	3,605	11,967	175,566
Elderly Care	1,133	265	121	25	7	8	9	0	2	1,570
Mental Health	2,210	989	297	139	66	31	19	6	54	3,811
Learning Disability	31	44	9	3	3	0	0	0	1	91
All POCs	71,363	35,815	22,617	14,805	8,715	6,515	5,573	3,611	12,024	181,038

Source: CH3

Outpatient Completed Waits

Waiting times for completed outpatient waits are shown in Table 9. During the March 2006 quarter a total of 91,695 outpatients attended their first appointment without having cancelled or missed a previous appointment. 68.0% of patients attended their first outpatient appointment within 3 months of being placed on the waiting list and 94.9% had their first outpatient appointment within 12 months.

Table 9 Completed Outpatient Waits for First Appointment³

Quarter	Time Waiting in Months									Total
	0 - 2	3 - 5	6 - 8	9 - 11	12 - 14	15 - 17	18 - 20	21 - 23	24 +	
J - M 2003	70.0%	17.2%	5.6%	2.8%	1.5%	0.9%	0.5%	0.4%	1.2%	85,054
A - J 2003	72.1%	15.8%	5.8%	2.8%	1.4%	0.8%	0.4%	0.3%	0.7%	84,963
J - S 2003	69.5%	18.4%	5.7%	2.5%	1.5%	0.7%	0.5%	0.3%	0.9%	80,128
O - D 2003	69.6%	17.9%	5.6%	2.6%	1.7%	0.8%	0.5%	0.4%	0.9%	88,711
J - D 2003	70.3%	17.3%	5.7%	2.7%	1.5%	0.8%	0.5%	0.3%	0.9%	338,856
J - M 2004	69.8%	17.1%	5.2%	2.9%	1.7%	1.3%	0.6%	0.4%	1.1%	91,496
A - J 2004	71.8%	15.9%	5.5%	2.7%	1.7%	0.9%	0.6%	0.3%	0.6%	88,213
J - S 2004	70.6%	17.9%	5.4%	2.5%	1.4%	0.8%	0.4%	0.3%	0.6%	84,455
O - D 2004	68.9%	17.3%	7.0%	2.6%	1.4%	0.9%	0.7%	0.4%	0.7%	91,915
J - D 2004	70.3%	17.1%	5.8%	2.7%	1.6%	1.0%	0.6%	0.3%	0.8%	356,079
J - M 2005	68.4%	16.4%	7.0%	3.3%	1.7%	1.3%	0.6%	0.4%	0.9%	86,944
A - J 2005	70.1%	15.6%	6.9%	2.9%	1.9%	0.7%	0.5%	0.3%	1.0%	91,489
J - S 2005	70.8%	16.0%	5.7%	2.9%	1.7%	1.1%	0.5%	0.4%	0.9%	82,721
O - D 2005	67.7%	15.9%	7.5%	3.1%	1.9%	1.1%	0.9%	0.6%	1.3%	91,969
J - D 2005	69.2%	16.0%	6.8%	3.1%	1.8%	1.0%	0.6%	0.4%	1.0%	353,123
J - M 2006	68.0%	15.6%	7.6%	3.7%	1.4%	1.1%	1.0%	0.6%	1.1%	91,695

Source: CH4 Part 1

³ Refer to Technical Notes – point 13.

Technical Notes

1. The sources for the data contained in this release are the Information Returns CH1, CH2, CH3 and CH4. These returns collect information from Hospital Trusts on a quarterly basis.
2. Trust based information (CH1, CH2, CH3 and CH4) returns include all patients living outside Northern Ireland and all privately funded patients waiting for treatment in Health Service hospitals. This Trust based information falls within the scope of National Statistics.
3. Patients waiting 12 months and over include all patients in the following time bands: 12-14, 15-17, 18-20, 21-23 and 24+ months. Patients waiting 18 months and over include all patients in the following time bands: 18-20, 21-23 and 24+ months.
4. Inpatient waiting list data comprises the number of patients waiting for ordinary admission to hospital and the number of patients waiting for day case treatment.
5. Ordinary admissions include both (a) patients admitted electively with the expectation that they will remain in hospital for at least one night, and (b) non-elective admissions (e.g. emergency admissions). A patient who is admitted with either of the above intentions, but who leaves hospital for any reason without staying overnight, is still counted as an ordinary admission. Day cases are not included.
6. Day Cases are patients admitted electively during the course of a day with the intention of receiving care who do not require the use of a hospital bed overnight and who return home as scheduled. If this original intention is not fulfilled and the patient stays overnight, such a patient is counted as an ordinary admission.
7. The waiting list inpatient figures presented include people waiting to be admitted as inpatients either as day cases or ordinary admissions. They do not include:
 - Patients admitted as emergency cases;
 - Outpatients;
 - Patients undergoing a planned programme of treatment e.g. a series of admissions for chemotherapy;
 - Maternity (specialties 510 and 520);
 - Patients already in hospitals but included on other waiting lists;
 - Patients who are temporarily suspended from waiting lists.
8. Waiting time begins from the date the clinician decided to admit the patient. Patients subsequently offered a date but unable to attend have their waiting times calculated from the most recent date offered. These are known as self-deferred cases and are included in the total number waiting.
9. Where the symbol '<0.1%' appears (Table 3b), this refers to a figure of less than 0.05% which would otherwise appear as 0.0% in the table due to rounding.
10. Outpatients are defined as patients still waiting for their first outpatient appointment at the end of the quarter. An outpatient appointment is to enable a patient to see a consultant, a member of his firm or locum for such a member, in respect of one referral.
11. Outpatient waiting list figures presented do not include maternity specialties 510 and 520.

12. An additional outpatient waiting list table has been included for the first time this quarter (Table 7). This table shows the number of patients waiting for a first outpatient appointment in each Health and Social Services Trust.
13. Due to reasons beyond the control of the Trust, United Hospitals HSS Trust has been unable to produce CH4 data for all quarters between March 2001 and March 2006. This Trust has provided estimated totals for these quarters and estimates for each time band have been calculated. These new estimates for the missing data for the United Group of Hospitals have been included in the data shown in Table 9. When CH4 data becomes available these estimates will be recast.
14. Department of Health, Social Services and Public Safety policy is to publish revised figures with subsequent statistical releases unless it is decided that the magnitude of the change merits earlier notification.
15. Figures relating to the quarter ending 30th June 2006 will be released on Thursday, 7th September 2006.
16. For general enquiries about National Statistics, contact the National Statistics Public Service on

020 7533 5888

minicom: 01633 812399

E-mail: info@statistics.gov.uk

Fax: 01633 652747

Letters: room DG/18, Drummond Gate,
LONDON SW1V 2QQ

You can also find National Statistics on the internet – Go to www.statistics.gov.uk.

Additional Information

Further information on waiting lists in Northern Ireland is available from:

Office Information Manager
Hospital Information Branch
Department of Health, Social Services and Public Safety
Annexe 2
Castle Buildings
Stormont
BT4 3SQ

E-mail: rib@dhsspsni.gov.uk

Internet address: http://www.dhsspsni.gov.uk/stats-hospital_community_statistics#waiting