

Corporate Monitoring Information Release

Department of Health, Social Services and Public Safety
An Roinn Sláinte, Seirbhísí Sóisialta agus Sábháilteacht Phoiblí

12th September 2000

Northern Ireland Waiting Lists¹ – June 2000

This information release gives details of the number of people waiting for inpatient or outpatient treatment at hospitals in Northern Ireland at the end of June 2000, the most recent quarter for which figures are available.

Inpatients

Headline Totals – Table 1

The total number of patients waiting to be admitted to hospitals in Northern Ireland at the end of June 2000 stood at 49,518.

Over the quarter, comparing the end of June 2000 with the end of March 2000 (47,323), the total number waiting has increased by 2,195 (4.6%).

Over the year, comparing the end of June 2000 with the end of June 1999 (45,278), the total number waiting has increased by 4,240 (9.4%).

Table 1: Quarterly Waiting Lists – June 2000

Waiting for:	Quarter ending June 2000	Change compared with end previous quarter	Change compared with end same quarter – previous year
Ordinary admissions	25,603	+ 911	+ 1,535
Day case admissions	23,915	+ 1,284	+ 2,705
Total Waiting	49,518	+ 2,195	+ 4,240

Source: CH1

Detailed notes and definitions are shown in the attached Notes to Editors.

¹This quarter's information release includes revisions, mainly to outpatient waiting list figures. See Note 15 of Notes to Editors.



A National Statistics Publication

National Statistics are produced to high professional standards set out in the National Statistics Code of Practice. They undergo regular quality assurance reviews to ensure that they meet customer needs. They are produced free from any political interference.

Numbers Waiting for Ordinary Admission and Day Case Treatment

People on the inpatient waiting list in Northern Ireland can be waiting for admission to hospital as day cases or as ordinary admissions.

Of the 49,518 people waiting for admission to hospital at the end of June 2000, 25,603 (51.7%) were waiting for ordinary admission and 23,915 (48.3%) were waiting for day case admission (Table 1).

Since the end of March 2000, the number of cases waiting for ordinary admission has increased by 911 (3.7%) and the number waiting for day case admission has increased by 1,284 (5.7%).

In comparison with June 1999, the number of cases waiting for ordinary admission has increased by 1,535 (6.4%) and the number waiting for day case admission has increased by 2,705 (12.8%).

Excess Waiters¹ – Table 2

The number of excess waiters at the end of June 2000 stood at 6,009 or 12.1% of the total waiting.

Over the quarter, comparing the end of June 2000 with the end of March 2000, the number of excess waiters increased by 716 (13.5%).

Over the year, comparing the end of June 2000 with the end of June 1999, the numbers of excess waiters increased by 1,491 (33.0%).

Table 2 Excess Waiters¹ – June 2000

Waiting for:	Quarter ending June 2000	Change compared with end previous quarter	Change compared with end same quarter – previous year
Ordinary admissions	4,335	+ 436	+ 1,135
Day case admissions	1,674	+ 280	+ 365
Total Waiting	6,009	+ 716	+ 1,491

¹See Notes to Editors (paragraph 4) for definition of Excess Waiters.

Source: CH1

Peak Figures

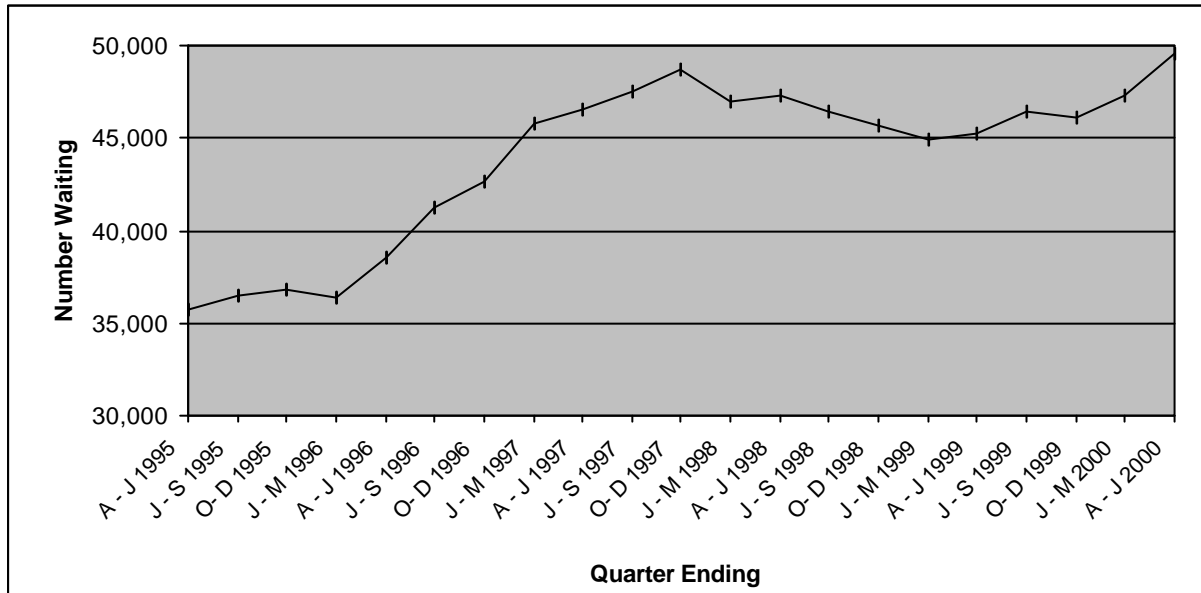
The end of June 2000 total of 49,518 on the inpatient waiting list has exceeded the previous peak waiting list figure of 48,740 (end December 1997) by 778 (1.6%).

Although the number of excess waiters has continued to rise to 6,009 at the end of June 2000, it is still 586 (8.9%) below the peak of 6,595 recorded at the end of December 1997.

Trends

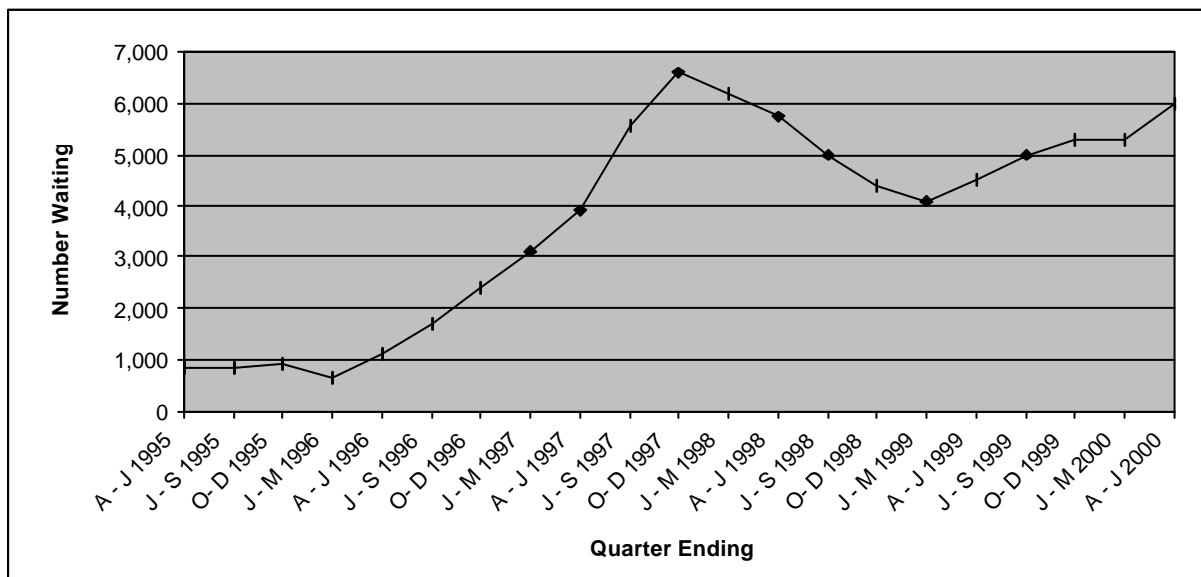
Over the past five years both the total numbers waiting and the numbers of excess waiters were on a generally upward trend until December 1997. Subsequently the total waiting went on a generally downward trend until June 1999. Since then the total waiting has risen to its current peak (Figure 1). Excess waiters have followed a similar trend but have not yet reached their previous peak at December 1997 (Figure 2).

Figure 1 Quarterly waiting lists – Five yearly trends June 1995 – June 2000



Source: CHI

Figure 2 Excess Waiters¹ - Five yearly trends June 1995 – June 2000



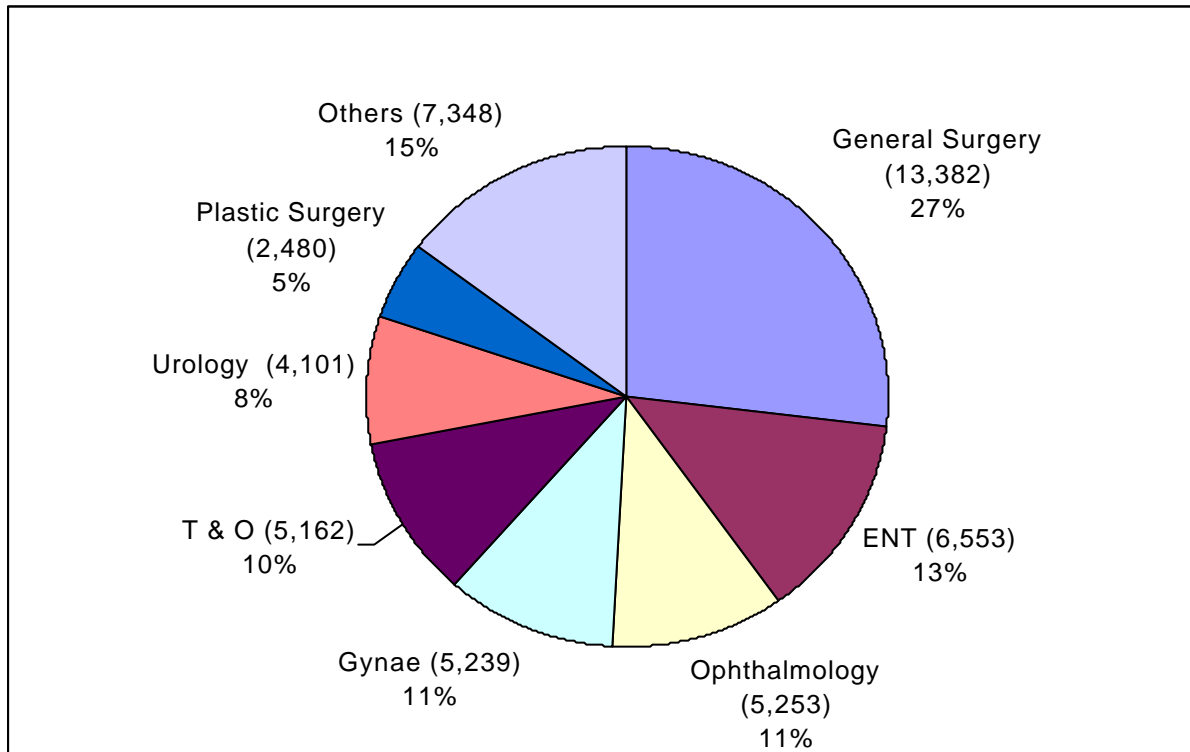
¹See Notes to Editors (paragraph 4) for definition of Excess Waiters.

Source: CHI

Inpatients Waiting by Specialty

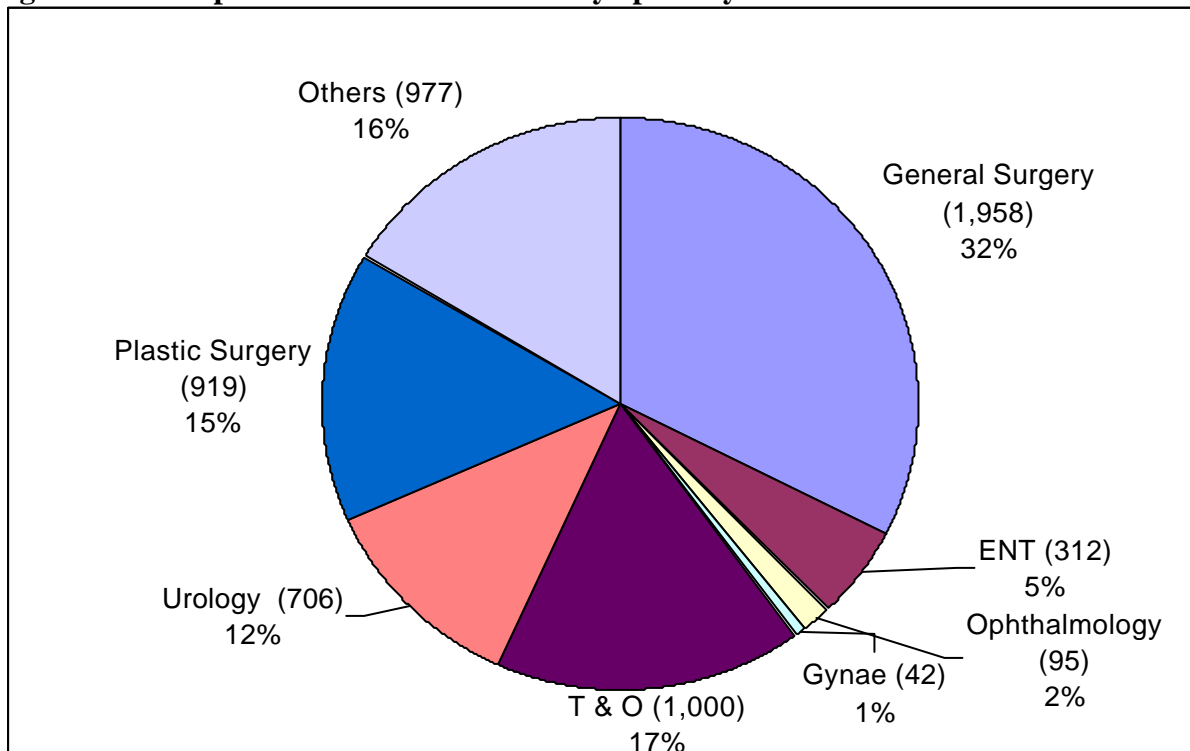
The overwhelming majority of those waiting (85%) were within seven specialties: General Surgery; ENT; Ophthalmology; Gynaecology; Trauma & Orthopaedics; Urology and Plastic Surgery (Figure 3a). Corresponding figures for excess waiters are shown in Figure 3b.

Figure 3a Inpatients - Total Waiters by Specialty at the end of June 2000



Source: CHI

Figure 3b Inpatients – Excess Waiters¹ by Specialty at the end of June 2000



¹See Notes to Editors (paragraph 4) for definition of Excess Waiters.

Source: CHI

Inpatient Completed Waits

Waiting times for completed inpatient waits are shown in Table 3. A total of 36,307 inpatients were admitted to hospital (excluding those who had previously refused an offer of attendance) during the June 2000 quarter.

Table 3 Completed Inpatient Waits

Time Waiting in Months (Percentage of total waits in each time band)						
Quarter	0-2	3-11	12-17	18-23	24+	Total
A - J 1997	76.8%	19.5%	2.8%	0.6%	0.3%	36,029
J - S 1997	76.3%	19.3%	2.9%	1.0%	0.4%	32,245
O- D 1997	76.7%	18.4%	3.2%	1.3%	0.5%	36,495
J - M 1998	73.8%	19.6%	4.0%	1.6%	1.0%	38,848
A - J 1998	74.5%	19.9%	3.1%	1.2%	1.2%	40,637
J - S 1998	73.5%	21.1%	2.9%	1.2%	1.2%	34,067
O- D 1998	75.1%	19.6%	3.2%	1.0%	1.1%	37,192
J - M 1999	75.5%	19.8%	2.9%	0.8%	1.0%	38,185
A - J 1999	75.6%	20.0%	3.0%	0.7%	0.8%	36,171
J - S 1999	75.8%	20.2%	2.7%	0.7%	0.6%	33,518
O- D 1999	77.0%	18.7%	2.7%	0.8%	0.7%	35,765
J - M 2000	75.4%	20.1%	3.0%	0.8%	0.7%	35,637
A - J 2000	76.4%	19.5%	2.6%	0.8%	0.7%	36,307

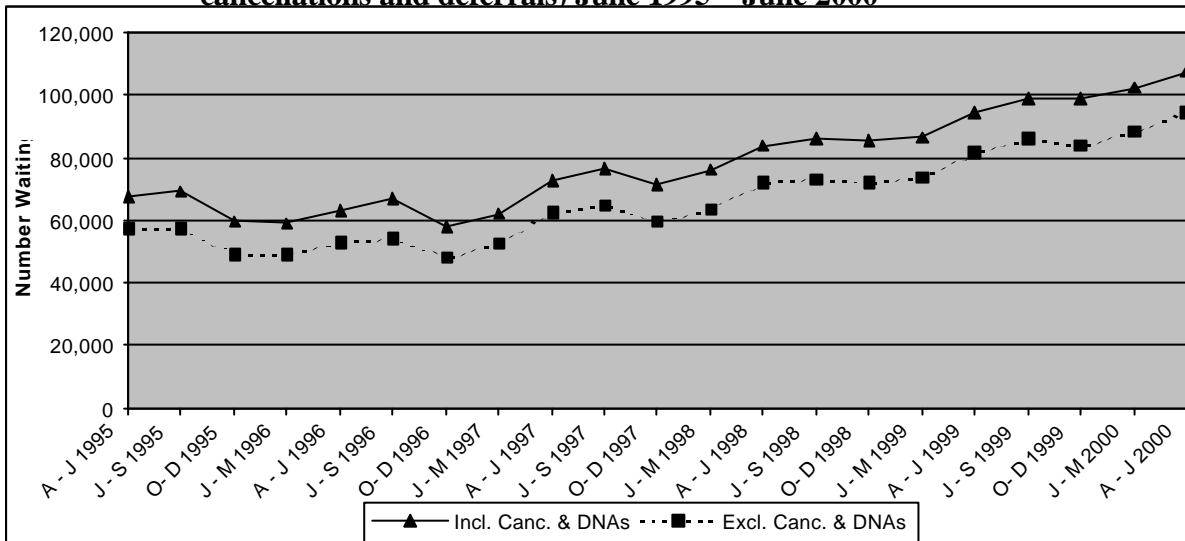
Source CH2: Part 1

Outpatients

Headline Totals

The numbers of patients waiting for admission as outpatients (including cancellations and deferrals) at the end of June 2000 stood at 107,324, representing an increase of 5,043(+4.9%) over the quarter and an increase of 13,213 (+14.0%) compared with the same quarter in the previous year. Corresponding quarterly and annual changes (excluding cancellations and deferrals) were 6.4% and 15.8% respectively. Apart from a fall in the December 1997 quarter, outpatient waiting lists have been on a generally upward trend for more than three years (Figure 4). Historical data has been revised in light of improved data quality at Trust level as outlined in note 15.

Figure 4 Outpatients Waiting for a First Appointment (including and excluding cancellations and deferrals) June 1995 – June 2000



Source: CH3 Parts 1&2.

Outpatient Completed Waits

Waiting times for completed outpatient waits are shown in Table 4. During the June 2000 quarter a total of 77,383 outpatients attended their first appointment without having cancelled or missed a previous appointment.

Table 4 Completed Outpatient Waits for First Appointment

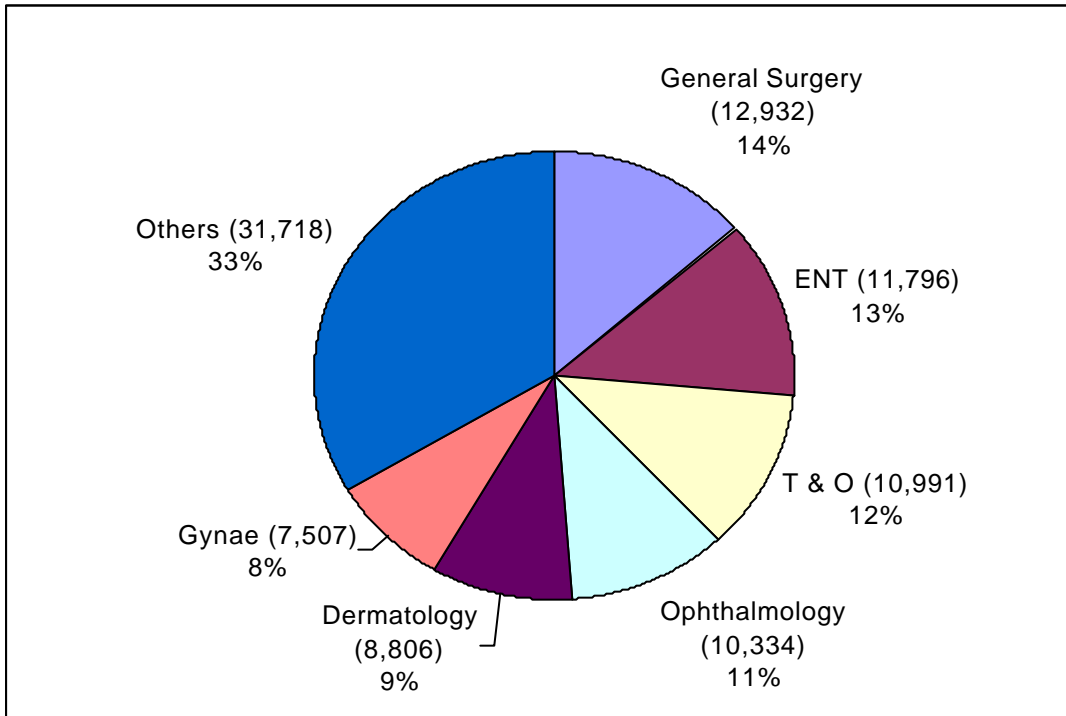
Source: CH4 Part1 * Estimated figures – See note 14

Quarter	Time Waiting in Months (Percentage of total waits in each time band)					Total
	0-2	3-11	12-17	18-23	24+	
A - J 1997	87.4%	11.6%	0.9%	0.1%	0.0%	75,299
J - S 1997	82.7%	16.3%	0.9%	0.1%	0.0%	72,137
O - D 1997	81.9%	17.1%	0.9%	0.1%	0.0%	79,547
J - M 1998	82.8%	16.3%	0.7%	0.2%	0.0%	78,694
A - J 1998	82.9%	16.5%	0.4%	0.2%	0.1%	78,980
J - S 1998	78.8%	20.6%	0.4%	0.1%	0.0%	73,141
O - D 1998	79.4%	20.0%	0.4%	0.1%	0.1%	83,321
J - M 1999	79.9%	19.2%	0.6%	0.3%	0.1%	83,143
A - J 1999	80.9%	18.3%	0.6%	0.1%	0.1%	77,691
J - S 1999	77.3%	21.7%	0.8%	0.2%	0.1%	75,075
O - D 1999	76.5%	22.4%	0.8%	0.2%	0.1%	82,658
J - M 2000*	77.2%	21.7%	0.9%	0.1%	0.1%	83,981
A - J 2000*	78.9%	19.9%	0.9%	0.2%	0.1%	77,383

Outpatients Waiting by Specialty

The overwhelming majority of those waiting (67%) were within six specialties: General Surgery; ENT; Trauma & Orthopaedics; Ophthalmology; Dermatology and Gynaecology (Figure 5a). Corresponding figures for excess waiters are shown in Figure 5b. All figures include only those who are waiting for their first appointment without having cancelled or missed a previous appointment during the June 2000 quarter.

Figure 5a Outpatients – Total Waiters by Specialty at the end of June 2000



Source: CH3 Part1

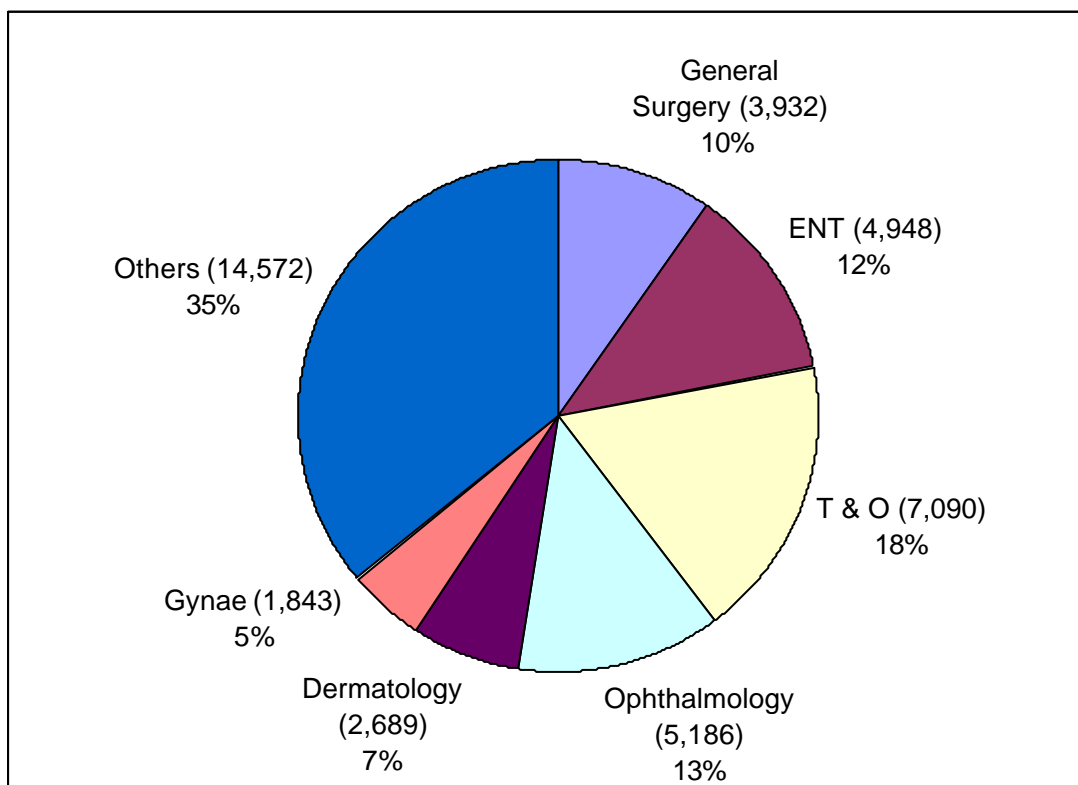


Figure 5b Outpatients – Excess Waiters¹ by Specialty at the end of June 2000

¹See Notes to Editors (paragraph 5) for definition of Excess Waiters.

Source: CH3 Part 1

Notes to Editors

1. Unless otherwise stated hospitals and patients mentioned in this release refer only to HPSS hospitals and patients.
2. The sources for the data contained in this release are the Charter Monitoring Returns CH1, CH2, CH3 and CH4. These returns collect information from Hospital Trusts on a quarterly basis.
3. All figures include all privately funded patients waiting for treatment in Health Service hospitals and those patients who are resident outside Northern Ireland.
4. In Northern Ireland, inpatient excess waiters are defined as those having to wait 12 months or more for admission to the Cardiac Surgery specialty and those having to wait 18 months or more to other specialties.
5. For outpatients, excess waiters are defined as those having to wait more than 3 months for a first outpatient appointment.
6. Ordinary admissions include both (a) patients admitted electively with the expectation that they will remain in hospital for at least one night, and (b) non-elective admissions (e.g. emergency admissions). A patient who is admitted with this intention but who leaves hospital for any reason without staying overnight is still counted as an ordinary admission. Day cases are not included.
7. Day Cases are patients admitted electively during the course of a day with the intention of receiving care who do not require the use of a hospital bed overnight and who return home as scheduled. If this original intention is not fulfilled and the patient stays overnight, such a patient should be counted as an ordinary admission.
8. The inpatient figures presented include people waiting to be admitted as inpatients either as day cases or ordinary admissions. They do not include:
 - Patients admitted as emergency cases;
 - Outpatients;
 - Patients undergoing a planned programme of treatment e.g. a series of admissions for chemotherapy;
 - Maternity;
 - Patients already in hospitals but included on other waiting lists;
 - Patients who are temporarily suspended from waiting lists.
9. Waiting time begins from the date the clinician decided to admit the patient. Patients subsequently offered a date but unable to attend have their waiting times calculated from the most recent date offered. These are known as self-deferred cases and are included in the total waiting.
10. Monthly waiting list figures had previously been included in this publication. The source for the monthly waiting list figures is the monthly return CHA. Due to technical difficulties at source monthly figures are not currently available. Work is ongoing to rectify this problem.
11. The source for outpatient waiting list data is the quarterly Charter Monitoring Return CH3.

12. Figures relating to the quarter ending September 2000 will be released Tuesday, 12th December 2000.
13. Some of the data may be provisional and may be subject to revision in subsequent quarters.
14. One Trust (Sperrin Lakeland) was unable to produce CH4 data for quarters ending March and June 2000. Another Trust (the United Group of Hospitals) has been unable to produce CH4 data for the quarter ending June 2000. Estimates for these missing data have been included in the March and June 2000 data shown in Table 4.
15. Over the June 2000 quarter the Royal Group of Hospitals Trust has undertaken a major validation exercise of its outpatients waiting list. The overall effect has been to revise the outpatient waiting list total for the end of March 2000 downwards by around 9,500. A revised series of outpatient figures for the Royal Group of Hospitals Trust has been prepared taking account of this discontinuity back to 1996. Comparisons with previous quarters and graphed trends are based on this revised series. Other validation on the inpatient waiting list figures has contributed a net increase of some 500 to the inpatient waiting list total for the end of June. This will be largely eliminated over the next two quarters.
16. For general enquiries about National Statistics, contact the National Statistics Public Service on

020 7533 5888

minicom: 01633 812399

E-mail: info@statistics.gov.uk

Fax: 01633 652747

Letters: room DG/18, Drummond Gate,
LONDON SW1V 2QQ

You can also find National Statistics on the internet –

Go to www.statistics.gov.uk.

Additional Information

Further information on waiting lists in Northern Ireland is available from:

Office Information Manager
Regional Information Branch
Department of Health, Social Services and Public Safety
Annexe 2
Castle Buildings

Stormont
BT4 3UD

Internet address: <http://www.dhssni.gov.uk/hpss/statistics>