

Statistics Release



Department of
**Health, Social Services
and Public Safety**

An Roinn

**Sláinte, Seirbhísí Sóisialta
agus Sábháilteachta Poiblí**

www.dhsspsni.gov.uk

1st September 2005

Northern Ireland Waiting Lists – June 2005

This statistics release gives details of the number of people waiting for inpatient or outpatient treatment at hospitals in Northern Ireland at the end of June 2005, the most recent quarter for which figures are available.

Inpatients

Headline Totals – Table 1

The total number of patients waiting to be admitted to hospitals in Northern Ireland at the end of June 2005 stood at 47,425.

Over the quarter, comparing the end of June 2005 with the end of March 2005 (47,523), the total number waiting has decreased by 98 (-0.2%).

Over the year, comparing the end of June 2005 with the end of June 2004 (50,975), the total number waiting decreased by 3,550 (-7.0%).

Table 1: Quarterly Waiting Lists – June 2005

| Waiting for: | Quarter Ending June 2005 | Change compared with end of previous quarter | Change compared with end same quarter – previous year |
|---------------------|-----------------------------|--|---|
| Ordinary Admissions | 18,856 | -50 | -3,144 |
| Day case Admissions | 28,569 | -48 | -406 |
| Total Waiting | 47,425 | -98 | -3,550 |

Source: CHI

Detailed notes and definitions are provided in the Technical Notes.



A National Statistics Publication

National Statistics are produced to high professional standards set out in the National Statistics Code of Practice. They undergo regular quality assurance reviews to ensure that they meet customer needs. They are produced free from any political interference.

Numbers Waiting for Ordinary Admission and Day Case Treatment

People on the inpatient waiting list in Northern Ireland can be waiting for admission to hospital as day cases or as ordinary admissions.

Of the 47,425 people waiting for admission to hospital at the end of June 2005, 18,856 (39.8%) were waiting for ordinary admission and 28,569 (60.2%) were waiting for day case admission (Table 1).

Since the end of March 2005, the number of cases waiting for ordinary admission has decreased by 50 (-0.3%) and the number waiting for day case admission has decreased by 48 (-0.2%).

In comparison with June 2004, the number of cases waiting for ordinary admission has decreased by 3,144 (-14.3%) and the number waiting for day case admission has decreased by 406 (-1.4%).

Waiting Times for Ordinary Admission and Day Case Treatment¹ – Tables 2a & 2b

At the end of June 2005, the number of patients waiting 12 months and over was 3,969 or 8.4% of the total waiting. Of those, the number waiting 18 months and over at the end of June 2005 stood at 878 or 1.9% of the total waiting.

Over the quarter, comparing the end of June 2005 with the end of March 2005, the number of people waiting 12 months and over decreased by 62 (-1.5%). The number of patients waiting 18 months and over increased by 96 (12.3%) over the same period.

Over the year, comparing the end of June 2005 with the end of June 2004, the number of people waiting 12 months and over decreased by 2,889 (-42.1%). Over the same period the number of people waiting 18 months and over decreased by 2,352 (-72.8%).

Table 2a Patients Waiting 12 Months and Over¹ – June 2005

| Waiting for: | Quarter Ending June 2005 | Change compared with end of previous quarter | Change compared with end same quarter - previous year |
|---------------------|--------------------------|--|---|
| Ordinary admissions | 2,573 | -58 | -2,116 |
| Day case admissions | 1,396 | -4 | -773 |
| Total Waiting | 3,969 | -62 | -2,889 |

Source: CH1

¹ Refer to Technical Notes – point 3.

Table 2b Patients Waiting 18 Months and Over¹ – June 2005

| Waiting for: | Quarter Ending June 2005 | Change compared with end of previous quarter | Change compared with end same quarter - previous year |
|----------------------|-------------------------------------|---|--|
| Ordinary admissions | 750 | + 91 | -1,733 |
| Day case admissions | 128 | + 5 | -619 |
| Total Waiting | 878 | + 96 | -2,352 |

Source: CHI

¹ Refer to Technical Notes – point 3.

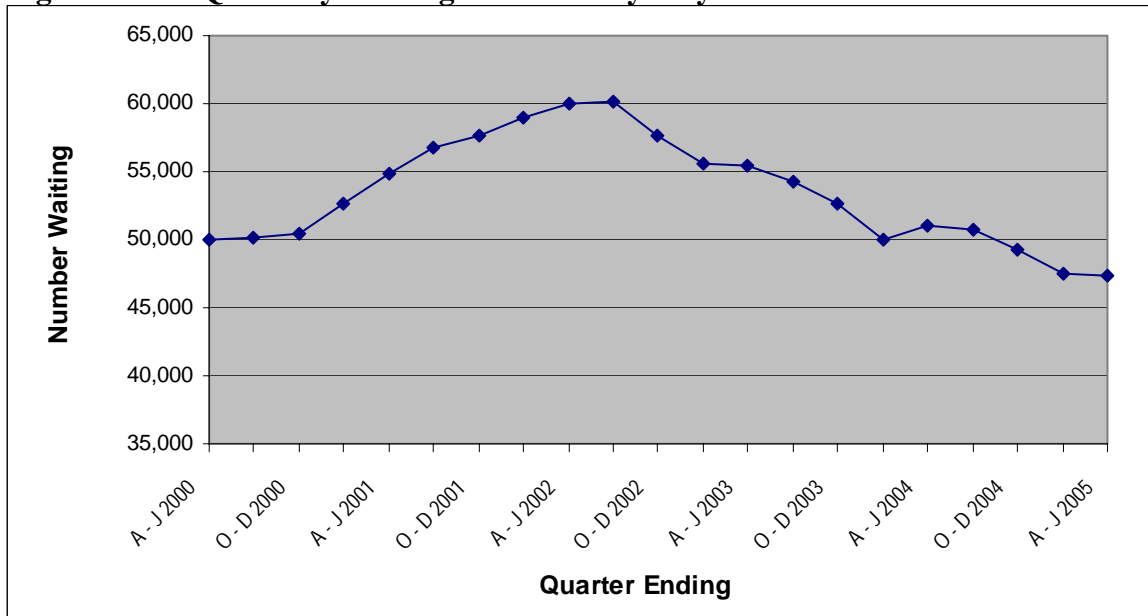
Peak Figures

The end of June 2005 total of 47,425 on the inpatient waiting list represents a decrease of 12,765 (-21.2%) on the peak waiting list figure of 60,190 (end September 2002).

Trends

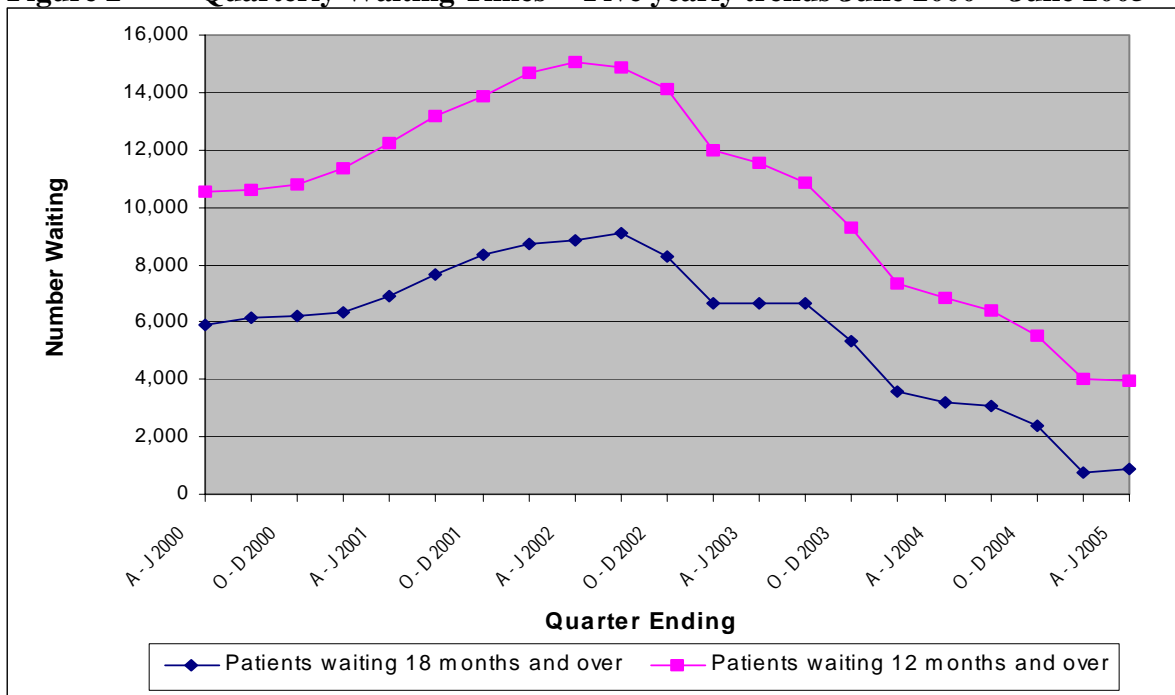
The total number of people waiting was on a generally upward trend from June 2000, and rose to peak in September 2002. The trend reversed and the total number of people waiting decreased between December 2002 and March 2004. The total number of people waiting increased slightly during the quarter ending June 2004, but has decreased in the last four quarters (Figure 1). Patients waiting over 12 months have been generally on a downward trend since September 2002 as have patients waiting over 18 months (Figure 2).

Figure 1 Quarterly Waiting Lists – Five yearly trends June 2000 – June 2005



Source: CHI

Figure 2 Quarterly Waiting Times¹ - Five yearly trends June 2000 – June 2005



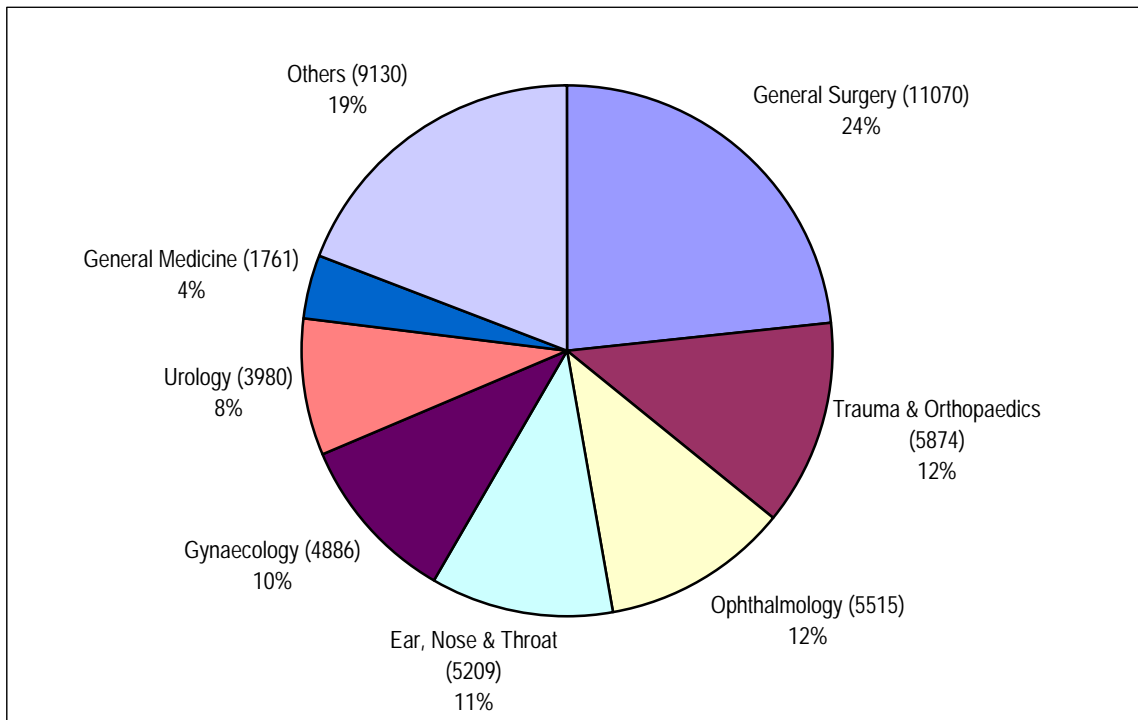
Source: CHI

¹ Refer to Technical Notes – point 3.

Inpatients Waiting by Specialty

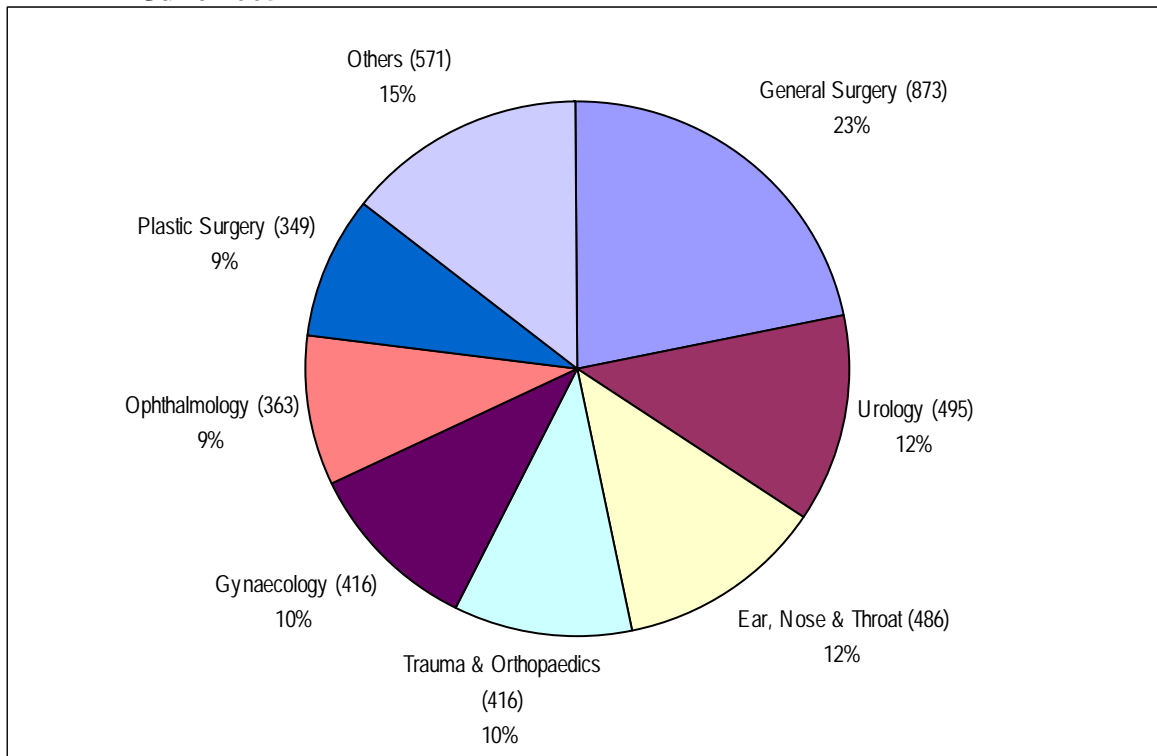
The overwhelming majority of those waiting (81%) were within seven specialties: General Surgery; Trauma and Orthopaedic Surgery (T&O); Ophthalmology; Ear, Nose and Throat (ENT); Gynaecology (Gynae); Urology and General Medicine (Figure 3a). Figures for patients waiting 12 months and over are shown in Figure 3b. Figures for patients waiting 18 months and over are shown in Figure 3c.

Figure 3a Inpatients - Total Waiters by Specialty at the end of June 2005



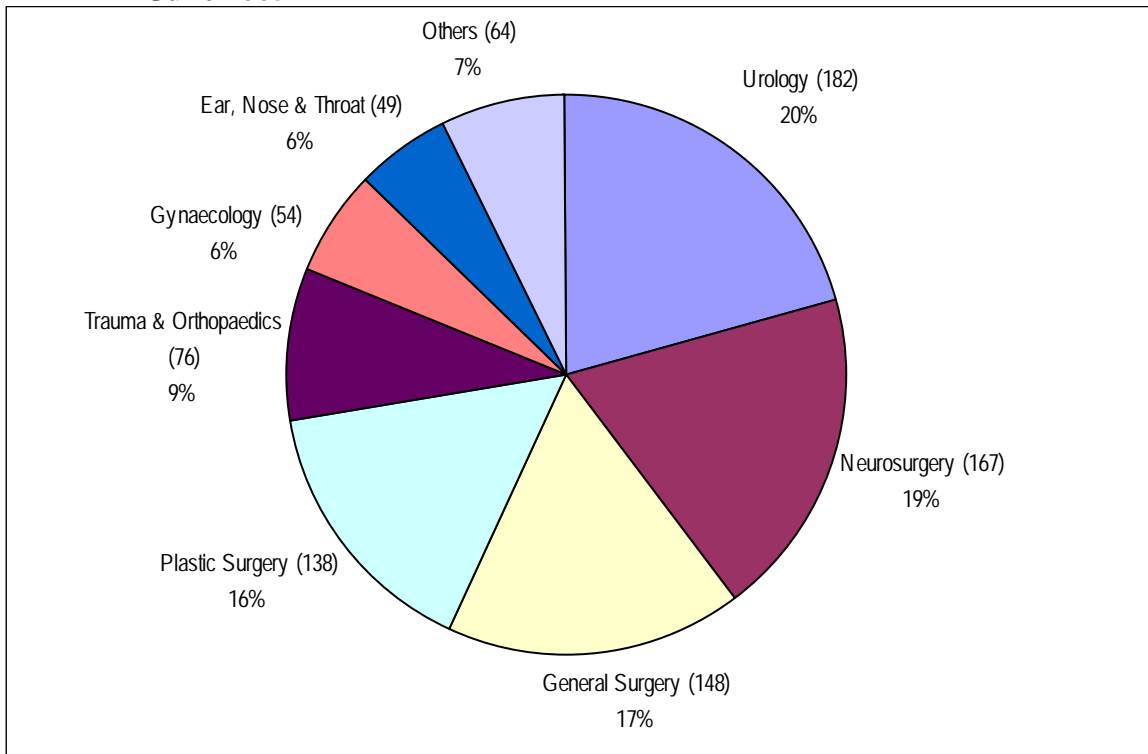
Source: CH1

Figure 3b Inpatients – Patients Waiting 12 months and Over¹ by Specialty at the end of June 2005



Source: CH1

Figure 3c Inpatients – Patients Waiting 18 months and Over¹ by Specialty at the end of June 2005



Source: CH1

¹Refer to Technical Notes – point 3.

Inpatient Waiting Time by Specialty

Waiting times for inpatients by specialty are shown in Tables 3a and 3b. The proportion of those waiting less than 12 months ranged from 100% in a number of Specialities including Cardiac Surgery to 43.5% in Neurosurgery. Overall 91.6% of those waiting for admission were waiting less than 12 months. More than 99% of patients were waiting for treatment in the Acute Services Programme of Care.

Table 3a Number of Patients Waiting for Admission by Months Waiting and Specialty – June 2005

| Specialty | Patients Waiting for Admission by Months Waiting | | | | | | | | | Total Number of Patients Awaiting Admission |
|--------------------------|--|---------------|--------------|--------------|--------------|--------------|------------|-----------|------------|---|
| | 0 - 2 | 3 - 5 | 6 - 8 | 9 - 11 | 12 - 14 | 15 - 17 | 18 - 20 | 21 - 23 | 24 + | |
| General Surgery | 6,333 | 2,055 | 1,220 | 589 | 440 | 285 | 114 | 12 | 22 | 11,070 |
| Trauma & Orthopaedics | 2,094 | 1,692 | 1,121 | 551 | 232 | 108 | 37 | 18 | 21 | 5,874 |
| Ophthalmology | 2,740 | 1,422 | 699 | 291 | 236 | 117 | 7 | 1 | 2 | 5,515 |
| Ear, Nose & Throat | 2,472 | 1,213 | 703 | 335 | 274 | 163 | 38 | 1 | 10 | 5,209 |
| Gynaecology | 2,684 | 919 | 512 | 355 | 247 | 115 | 50 | 2 | 2 | 4,886 |
| Urology | 1,768 | 849 | 529 | 339 | 187 | 126 | 70 | 23 | 89 | 3,980 |
| General Medicine | 1,418 | 274 | 31 | 19 | 18 | 1 | 0 | 0 | 0 | 1,761 |
| Gastroenterology | 1,230 | 281 | 69 | 19 | 13 | 6 | 2 | 0 | 0 | 1,620 |
| Cardiology | 816 | 355 | 203 | 82 | 23 | 27 | 10 | 7 | 18 | 1,541 |
| Plastic Surgery | 498 | 258 | 207 | 185 | 133 | 78 | 26 | 14 | 98 | 1,497 |
| Paediatric Surgery | 261 | 165 | 114 | 80 | 53 | 12 | 3 | 1 | 1 | 690 |
| Oral Surgery | 342 | 148 | 91 | 14 | 35 | 14 | 0 | 0 | 3 | 647 |
| Pain Management | 287 | 134 | 91 | 49 | 41 | 3 | 1 | 0 | 0 | 606 |
| Rheumatology | 411 | 70 | 16 | 5 | 0 | 0 | 0 | 0 | 0 | 502 |
| Dermatology | 248 | 116 | 16 | 3 | 5 | 0 | 0 | 0 | 0 | 388 |
| Neurosurgery | 83 | 32 | 28 | 23 | 25 | 24 | 26 | 13 | 128 | 382 |
| Cardiac Surgery | 160 | 85 | 18 | 13 | 0 | 0 | 0 | 0 | 0 | 276 |
| Neurology | 76 | 60 | 15 | 19 | 15 | 15 | 6 | 0 | 0 | 206 |
| Thoracic Surgery | 67 | 19 | 11 | 9 | 12 | 6 | 2 | 0 | 0 | 126 |
| General Practice (Other) | 90 | 19 | 17 | 0 | 0 | 0 | 0 | 0 | 0 | 126 |
| Other | 435 | 69 | 15 | 2 | 2 | 0 | 0 | 0 | 0 | 523 |
| All Specialties | 24,513 | 10,235 | 5,726 | 2,982 | 1,991 | 1,100 | 392 | 92 | 394 | 47,425 |

Table 3b Percentage of Patients Waiting for Admission by Months Waiting and Specialty – June 2005

| Specialty | Patients Waiting for Admission by Months Waiting | | | | | | | | |
|--------------------------|--|--------------|--------------|-------------|-------------|-------------|-------------|-------------|-------------|
| | 0 - 2 | 3 - 5 | 6 - 8 | 9 - 11 | 12 - 14 | 15 - 17 | 18 - 20 | 21 - 23 | 24 + |
| General Surgery | 57.2% | 18.6% | 11.0% | 5.3% | 4.0% | 2.6% | 1.0% | 0.1% | 0.2% |
| Trauma & Orthopaedics | 35.6% | 28.8% | 19.1% | 9.4% | 3.9% | 1.8% | 0.6% | 0.3% | 0.4% |
| Ophthalmology | 49.7% | 25.8% | 12.7% | 5.3% | 4.3% | 2.1% | 0.1% | 0.0% | 0.0% |
| Ear, Nose & Throat | 47.5% | 23.3% | 13.5% | 6.4% | 5.3% | 3.1% | 0.7% | 0.0% | 0.2% |
| Gynaecology | 54.9% | 18.8% | 10.5% | 7.3% | 5.1% | 2.4% | 1.0% | 0.0% | 0.0% |
| Urology | 44.4% | 21.3% | 13.3% | 8.5% | 4.7% | 3.2% | 1.8% | 0.6% | 2.2% |
| General Medicine | 80.5% | 15.6% | 1.8% | 1.1% | 1.0% | 0.1% | 0.0% | 0.0% | 0.0% |
| Gastroenterology | 75.9% | 17.3% | 4.3% | 1.2% | 0.8% | 0.4% | 0.1% | 0.0% | 0.0% |
| Cardiology | 53.0% | 23.0% | 13.2% | 5.3% | 1.5% | 1.8% | 0.6% | 0.5% | 1.2% |
| Plastic Surgery | 33.3% | 17.2% | 13.8% | 12.4% | 8.9% | 5.2% | 1.7% | 0.9% | 6.5% |
| Paediatric Surgery | 37.8% | 23.9% | 16.5% | 11.6% | 7.7% | 1.7% | 0.4% | 0.1% | 0.1% |
| Oral Surgery | 52.9% | 22.9% | 14.1% | 2.2% | 5.4% | 2.2% | 0.0% | 0.0% | 0.5% |
| Pain Management | 47.4% | 22.1% | 15.0% | 8.1% | 6.8% | 0.5% | 0.2% | 0.0% | 0.0% |
| Rheumatology | 81.9% | 13.9% | 3.2% | 1.0% | 0.0% | 0.0% | 0.0% | 0.0% | 0.0% |
| Dermatology | 63.9% | 29.9% | 4.1% | 0.8% | 1.3% | 0.0% | 0.0% | 0.0% | 0.0% |
| Neurosurgery | 21.7% | 8.4% | 7.3% | 6.0% | 6.5% | 6.3% | 6.8% | 3.4% | 33.5% |
| Cardiac Surgery | 58.0% | 30.8% | 6.5% | 4.7% | 0.0% | 0.0% | 0.0% | 0.0% | 0.0% |
| Neurology | 36.9% | 29.1% | 7.3% | 9.2% | 7.3% | 7.3% | 2.9% | 0.0% | 0.0% |
| Thoracic Surgery | 53.2% | 15.1% | 8.7% | 7.1% | 9.5% | 4.8% | 1.6% | 0.0% | 0.0% |
| General Practice (Other) | 71.4% | 15.1% | 13.5% | 0.0% | 0.0% | 0.0% | 0.0% | 0.0% | 0.0% |
| Other | 83.2% | 13.2% | 2.9% | 0.4% | 0.4% | 0.0% | 0.0% | 0.0% | 0.0% |
| All Specialties | 51.7% | 21.6% | 12.1% | 6.3% | 4.2% | 2.3% | 0.8% | 0.2% | 0.8% |

Source: CH1

Inpatient Completed Waits

Waiting times for completed inpatient waits are shown in Table 4. A total of 41,062 inpatients were admitted to hospital (excluding those who had previously refused an offer of admission) during the June 2005 quarter. 74.1% of patients received their treatment within 3 months of being placed on the waiting list and 95.9% received their treatment within 12 months.

Table 4 Completed Inpatient Waits

| Quarter | Time Waiting in Months | | | | | | | | | Total |
|-------------------|------------------------|--------------|-------------|-------------|-------------|-------------|-------------|-------------|-------------|----------------|
| | 0 - 2 | 3 - 5 | 6 - 8 | 9 - 11 | 12 - 14 | 15 - 17 | 18 - 20 | 21 - 23 | 24 + | |
| J - M 2002 | 74.9% | 11.9% | 4.7% | 3.1% | 2.3% | 1.3% | 0.7% | 0.4% | 0.8% | 38,042 |
| A - J 2002 | 74.4% | 12.1% | 5.3% | 2.9% | 2.1% | 1.2% | 0.6% | 0.4% | 0.9% | 36,907 |
| J - S 2002 | 72.6% | 13.6% | 5.2% | 3.3% | 1.9% | 1.4% | 0.8% | 0.4% | 0.8% | 33,861 |
| O - D 2002 | 73.6% | 11.1% | 5.8% | 3.6% | 2.3% | 1.3% | 0.8% | 0.4% | 1.0% | 38,591 |
| J - D 2002 | 73.9% | 12.1% | 5.3% | 3.3% | 2.1% | 1.3% | 0.7% | 0.4% | 0.9% | 147,401 |
| J - M 2003 | 73.6% | 12.0% | 4.6% | 3.1% | 2.2% | 1.7% | 0.9% | 0.5% | 1.3% | 38,987 |
| A - J 2003 | 73.9% | 12.5% | 5.2% | 3.1% | 2.0% | 1.2% | 0.7% | 0.4% | 1.0% | 38,512 |
| J - S 2003 | 71.9% | 14.1% | 5.2% | 3.5% | 1.7% | 1.2% | 0.7% | 0.4% | 1.1% | 35,605 |
| O - D 2003 | 72.7% | 12.3% | 5.4% | 3.7% | 2.0% | 1.2% | 0.9% | 0.5% | 1.5% | 38,906 |
| J - D 2003 | 73.0% | 12.7% | 5.1% | 3.3% | 2.0% | 1.3% | 0.8% | 0.5% | 1.2% | 152,010 |
| J - M 2004 | 74.4% | 11.6% | 4.8% | 3.5% | 1.9% | 1.3% | 0.6% | 0.5% | 1.3% | 40,924 |
| A - J 2004 | 74.6% | 11.4% | 5.9% | 3.1% | 1.9% | 1.2% | 0.6% | 0.3% | 0.9% | 38,507 |
| J - S 2004 | 73.1% | 13.1% | 5.5% | 3.7% | 1.9% | 1.1% | 0.7% | 0.3% | 0.7% | 37,025 |
| O - D 2004 | 73.4% | 12.3% | 5.5% | 3.7% | 2.3% | 1.1% | 0.7% | 0.4% | 0.7% | 41,116 |
| J - D 2004 | 73.9% | 12.1% | 5.4% | 3.5% | 2.0% | 1.2% | 0.7% | 0.4% | 0.9% | 157,572 |
| J - M 2005 | 72.9% | 12.9% | 4.9% | 3.9% | 1.9% | 1.6% | 0.8% | 0.5% | 0.7% | 39,045 |
| A - J 2005 | 74.1% | 12.5% | 6.2% | 3.1% | 2.0% | 1.3% | 0.5% | 0.1% | 0.3% | 41,062 |

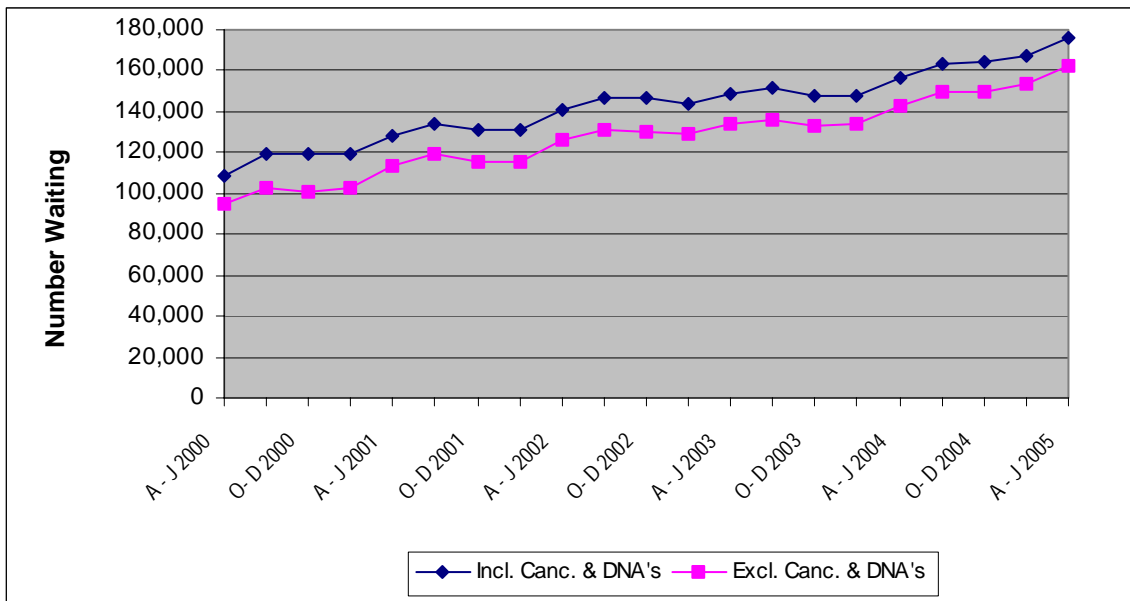
Source: CH2 Part 1

Outpatients

Headline Totals

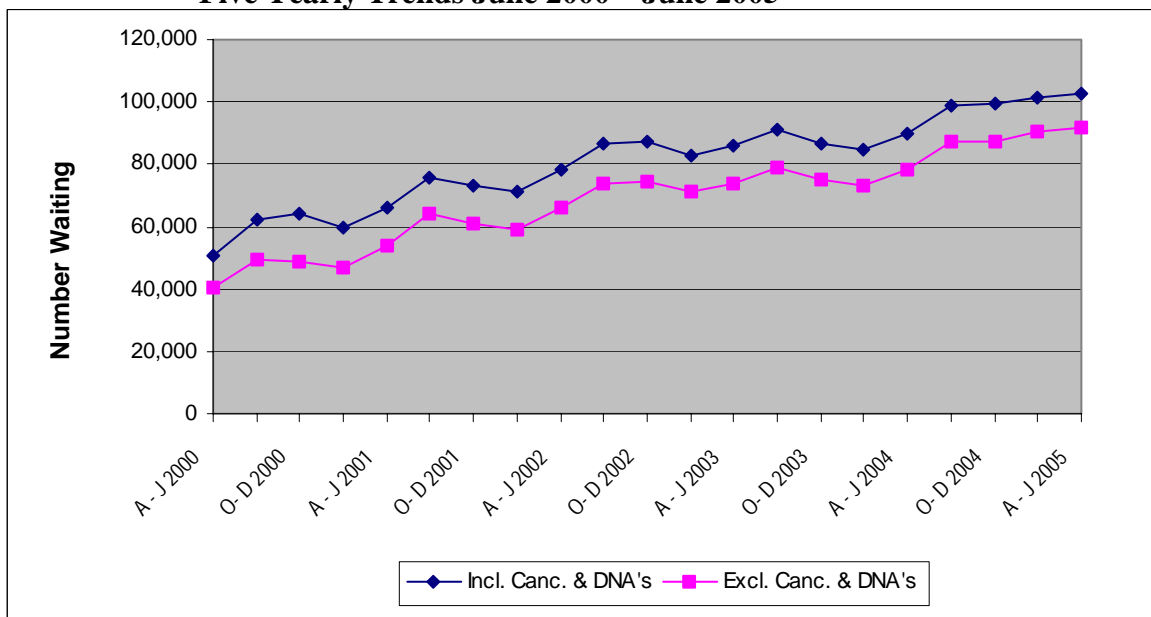
The number of patients waiting for admission as outpatients (including cancellations and deferrals) at the end of June 2005 stood at 176,523 representing an increase of 9,385 (5.6%) over the quarter and an increase of 19,649 (12.5%) compared with the same quarter in the previous year. Corresponding quarterly and annual changes (excluding cancellations and deferrals) were +5.6 % and +13.9% respectively. Figure 4 shows five yearly trends in the number of outpatients waiting for a first appointment. Figure 5 shows the same trends information for patients waiting 3 months and over for a first outpatient appointment.

Figure 4 Outpatients Waiting for a First Appointment (including and excluding cancellations and deferrals) – Five Yearly Trends June 2000 – June 2005



Source: CH3 Parts 1 & 2.

Figure 5 Patients Waiting 3 months and over - Five Yearly Trends June 2000 – June 2005

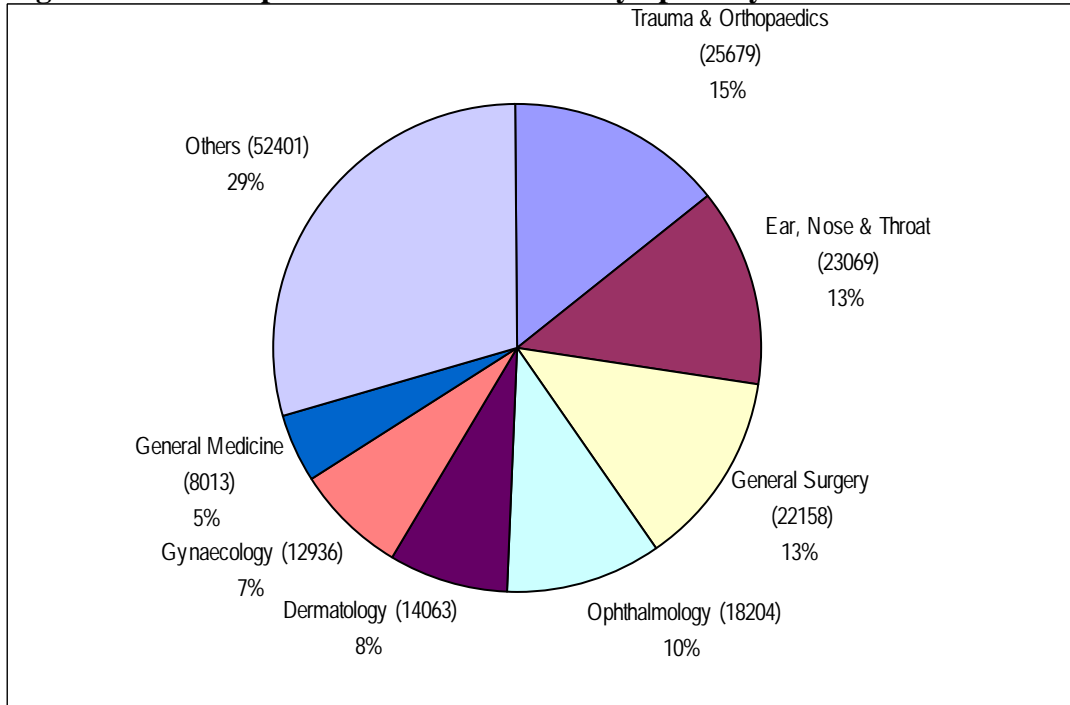


Source: CH3 Parts 1 & 2

Outpatients Waiting by Specialty

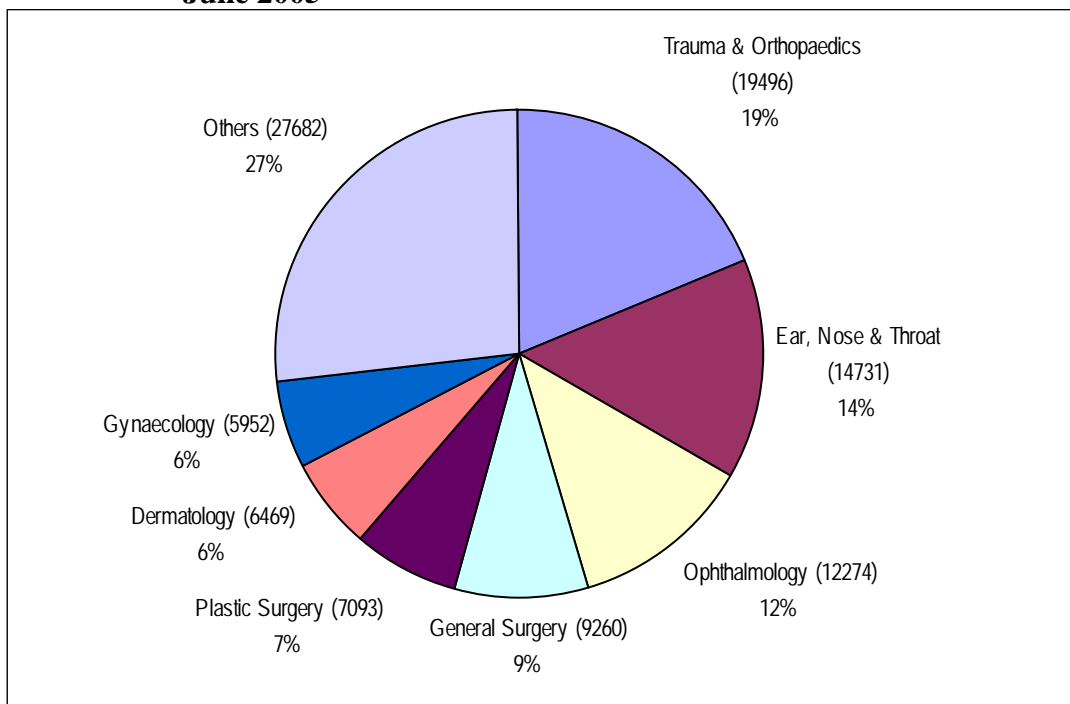
The majority of those waiting (71%) were within seven specialties: Trauma and Orthopaedic Surgery (T&O); Ear, Nose and Throat (ENT); General Surgery; Ophthalmology; Dermatology, Gynaecology (Gynae) and General Medicine (Figure 6a). Figures for patients waiting 3 months and over are shown in Figure 6b. Figures represent the total number waiting for their first outpatient appointment including those who have cancelled or missed a previous appointment during the June 2005 quarter.

Figure 6a Outpatients – Total Waiters by Specialty at the end of June 2005



Source: CH3.

Figure 6b Outpatients – Patients Waiting 3 months and over by Specialty at the end of June 2005



Source: CH3.

Outpatient Waiting Time by Specialty

Waiting times for outpatients by specialty are shown in Tables 5a and 5b. The proportion of those waiting less than 12 months ranged from 96.5% in the Mental Illness specialty to 26.0% in Plastic Surgery. Overall four fifths (79.8%) of those waiting for treatment were waiting less than 12 months.

Table 5a Number of Patients Waiting for a First Appointment by Months Waiting and Specialty – June 2005

| Specialty | Patients Waiting for an Appointment by Months Waiting | | | | | | | | | Total Number of Patients Awaiting Appointment |
|-------------------------------|---|---------------|---------------|---------------|--------------|--------------|--------------|--------------|---------------|---|
| | 0 - 2 | 3 - 5 | 6 - 8 | 9 - 11 | 12 - 14 | 15 - 17 | 18 - 20 | 21 - 23 | 24 + | |
| Trauma & Orthopaedics | 6,183 | 3,927 | 3,092 | 2,960 | 2,150 | 1,460 | 1,025 | 899 | 3,983 | 25,679 |
| Ear, Nose & Throat | 8,338 | 5,250 | 3,060 | 2,088 | 1,342 | 1,008 | 622 | 448 | 913 | 23,069 |
| General Surgery | 12,898 | 4,204 | 2,327 | 1,299 | 720 | 347 | 147 | 84 | 132 | 22,158 |
| Ophthalmology | 5,930 | 3,763 | 2,537 | 1,854 | 1,414 | 1,021 | 640 | 418 | 627 | 18,204 |
| Dermatology | 7,594 | 2,357 | 1,321 | 971 | 472 | 298 | 227 | 275 | 548 | 14,063 |
| Gynaecology | 6,984 | 3,044 | 1,438 | 763 | 380 | 178 | 86 | 55 | 8 | 12,936 |
| General Medicine | 4,093 | 1,497 | 861 | 588 | 354 | 232 | 157 | 80 | 151 | 8,013 |
| Plastic Surgery | 802 | 421 | 420 | 406 | 342 | 292 | 209 | 245 | 4,758 | 7,895 |
| Cardiology | 2,696 | 1,298 | 705 | 442 | 264 | 80 | 15 | 14 | 67 | 5,581 |
| Urology | 1,510 | 746 | 641 | 594 | 441 | 375 | 209 | 149 | 411 | 5,076 |
| Neurology | 1,549 | 1,055 | 657 | 599 | 385 | 235 | 60 | 20 | 32 | 4,592 |
| Rheumatology | 1,350 | 764 | 536 | 426 | 347 | 267 | 123 | 35 | 40 | 3,888 |
| Paediatrics | 2,242 | 767 | 216 | 53 | 42 | 55 | 4 | 5 | 39 | 3,423 |
| Mental Illness | 2,240 | 586 | 137 | 75 | 28 | 17 | 12 | 5 | 49 | 3,149 |
| Oral Surgery | 1,005 | 470 | 294 | 244 | 145 | 131 | 90 | 66 | 558 | 3,003 |
| Pain Management | 680 | 375 | 294 | 236 | 155 | 115 | 76 | 80 | 366 | 2,377 |
| Gastroenterology | 715 | 303 | 192 | 122 | 77 | 43 | 3 | 0 | 0 | 1,455 |
| Child & Adolescent Psychiatry | 488 | 336 | 158 | 77 | 25 | 27 | 23 | 19 | 60 | 1,213 |
| Restorative Dentistry | 289 | 228 | 130 | 61 | 61 | 32 | 37 | 55 | 306 | 1,199 |
| Paediatric Surgery | 525 | 277 | 115 | 43 | 21 | 33 | 0 | 5 | 30 | 1,049 |
| Other | 5,455 | 1,281 | 853 | 407 | 212 | 134 | 49 | 17 | 93 | 8,501 |
| All Specialties | 73,566 | 32,949 | 19,984 | 14,308 | 9,377 | 6,380 | 3,814 | 2,974 | 13,171 | 176,523 |

Source: CH3

Table 5b Percentage of Patients Waiting for a First Appointment by Months Waiting and Specialty – June 2005

| Specialty | Patients Waiting for an Appointment by Months | | | | | | | | |
|-------------------------------|---|--------------|--------------|-------------|-------------|-------------|-------------|-------------|-------------|
| | 0 - 2 | 3 - 5 | 6 - 8 | 9 - 11 | 12 - 14 | 15 - 17 | 18 - 20 | 21 - 23 | 24+ |
| Trauma & Orthopaedics | 24.1% | 15.3% | 12.0% | 11.5% | 8.4% | 5.7% | 4.0% | 3.5% | 15.5% |
| Ear, Nose & Throat | 36.1% | 22.8% | 13.3% | 9.1% | 5.8% | 4.4% | 2.7% | 1.9% | 4.0% |
| General Surgery | 58.2% | 19.0% | 10.5% | 5.9% | 3.2% | 1.6% | 0.7% | 0.4% | 0.6% |
| Ophthalmology | 32.6% | 20.7% | 13.9% | 10.2% | 7.8% | 5.6% | 3.5% | 2.3% | 3.4% |
| Dermatology | 54.0% | 16.8% | 9.4% | 6.9% | 3.4% | 2.1% | 1.6% | 2.0% | 3.9% |
| Gynaecology | 54.0% | 23.5% | 11.1% | 5.9% | 2.9% | 1.4% | 0.7% | 0.4% | 0.1% |
| General Medicine | 51.1% | 18.7% | 10.7% | 7.3% | 4.4% | 2.9% | 2.0% | 1.0% | 1.9% |
| Plastic Surgery | 10.2% | 5.3% | 5.3% | 5.1% | 4.3% | 3.7% | 2.6% | 3.1% | 60.3% |
| Cardiology | 48.3% | 23.3% | 12.6% | 7.9% | 4.7% | 1.4% | 0.3% | 0.3% | 1.2% |
| Urology | 29.7% | 14.7% | 12.6% | 11.7% | 8.7% | 7.4% | 4.1% | 2.9% | 8.1% |
| Neurology | 33.7% | 23.0% | 14.3% | 13.0% | 8.4% | 5.1% | 1.3% | 0.4% | 0.7% |
| Rheumatology | 34.7% | 19.7% | 13.8% | 11.0% | 8.9% | 6.9% | 3.2% | 0.9% | 1.0% |
| Paediatrics | 65.5% | 22.4% | 6.3% | 1.5% | 1.2% | 1.6% | 0.1% | 0.1% | 1.1% |
| Mental Illness | 71.1% | 18.6% | 4.4% | 2.4% | 0.9% | 0.5% | 0.4% | 0.2% | 1.6% |
| Oral Surgery | 33.5% | 15.7% | 9.8% | 8.1% | 4.8% | 4.4% | 3.0% | 2.2% | 18.6% |
| Pain Management | 28.6% | 15.8% | 12.4% | 9.9% | 6.5% | 4.8% | 3.2% | 3.4% | 15.4% |
| Gastroenterology | 49.1% | 20.8% | 13.2% | 8.4% | 5.3% | 3.0% | 0.2% | 0.0% | 0.0% |
| Child & Adolescent Psychiatry | 40.2% | 27.7% | 13.0% | 6.3% | 2.1% | 2.2% | 1.9% | 1.6% | 4.9% |
| Restorative Dentistry | 24.1% | 19.0% | 10.8% | 5.1% | 5.1% | 2.7% | 3.1% | 4.6% | 25.5% |
| Paediatric Surgery | 50.0% | 26.4% | 11.0% | 4.1% | 2.0% | 3.1% | 0.0% | 0.5% | 2.9% |
| Other | 64.2% | 15.1% | 10.0% | 4.8% | 2.5% | 1.6% | 0.6% | 0.2% | 1.1% |
| All Specialties | 41.7% | 18.7% | 11.3% | 8.1% | 5.3% | 3.6% | 2.2% | 1.7% | 7.5% |

Source: CH3

Outpatient Waiting Time by Programme of Care

Waiting times for a first outpatient appointment by programme of care are shown in Table 6. The vast majority (96.7%) of patients were awaiting their first outpatient appointment in the Acute Services Programme of Care.

Table 6 Number of Patients Waiting for a First Appointment by Months Waiting and Programme of Care – June 2005

| Programme of Care | Patients Waiting for an Appointment by Months Waiting | | | | | | | | | Total Number of Patients Awaiting Appointment |
|---------------------|---|---------------|---------------|---------------|--------------|--------------|--------------|--------------|---------------|---|
| | 0 - 2 | 3 - 5 | 6 - 8 | 9 - 11 | 12 - 14 | 15 - 17 | 18 - 20 | 21 - 23 | 24 + | |
| Acute Services | 69,775 | 31,772 | 19,623 | 14,123 | 9,319 | 6,329 | 3,775 | 2,948 | 13,061 | 170,725 |
| Elderly Care | 984 | 189 | 44 | 26 | 4 | 5 | 3 | 2 | 1 | 1,258 |
| Mental Health | 2,783 | 938 | 313 | 156 | 54 | 46 | 35 | 24 | 109 | 4,458 |
| Learning Disability | 24 | 50 | 4 | 3 | 0 | 0 | 1 | 0 | 0 | 82 |
| All POCs | 73,566 | 32,949 | 19,984 | 14,308 | 9,377 | 6,380 | 3,814 | 2,974 | 13,171 | 176,523 |

Source: CH3

Outpatient Completed Waits

Waiting times for completed outpatient waits are shown in Table 7. During the June 2005 quarter a total of 91,489 outpatients attended their first appointment without having cancelled or missed a previous appointment. 70.1% of patients attended their first outpatient appointment within 3 months of being placed on the waiting list and 95.5% had their first outpatient appointment within 12 months.

Table 7 Completed Outpatient Waits for First Appointment²

| Quarter | Time Waiting in Months | | | | | | | | | Total |
|-------------------|------------------------|--------------|-------------|-------------|-------------|-------------|-------------|-------------|-------------|----------------|
| | 0 - 2 | 3 - 5 | 6 - 8 | 9 - 11 | 12 - 14 | 15 - 17 | 18 - 20 | 21 - 23 | 24 + | |
| J - M 2002 | 72.4% | 17.0% | 5.5% | 2.9% | 0.9% | 0.5% | 0.3% | 0.3% | 0.3% | 85,856 |
| A - J 2002 | 74.9% | 15.3% | 4.9% | 2.5% | 0.9% | 0.5% | 0.3% | 0.2% | 0.4% | 82,282 |
| J - S 2002 | 71.0% | 18.5% | 5.1% | 2.7% | 1.3% | 0.5% | 0.2% | 0.2% | 0.4% | 79,986 |
| O - D 2002 | 70.2% | 17.9% | 6.1% | 2.7% | 1.3% | 0.7% | 0.4% | 0.3% | 0.6% | 88,056 |
| J - D 2002 | 72.1% | 17.2% | 5.4% | 2.7% | 1.1% | 0.6% | 0.3% | 0.2% | 0.4% | 336,180 |
| J - M 2003 | 70.0% | 17.2% | 5.6% | 2.8% | 1.5% | 0.9% | 0.5% | 0.4% | 1.2% | 85,054 |
| A - J 2003 | 72.1% | 15.8% | 5.8% | 2.8% | 1.4% | 0.8% | 0.4% | 0.3% | 0.7% | 84,963 |
| J - S 2003 | 69.5% | 18.4% | 5.7% | 2.5% | 1.5% | 0.7% | 0.5% | 0.3% | 0.9% | 80,128 |
| O - D 2003 | 69.6% | 17.9% | 5.6% | 2.6% | 1.7% | 0.8% | 0.5% | 0.4% | 0.9% | 88,711 |
| J - D 2003 | 70.3% | 17.3% | 5.7% | 2.7% | 1.5% | 0.8% | 0.5% | 0.3% | 0.9% | 338,856 |
| J - M 2004 | 69.8% | 17.1% | 5.2% | 2.9% | 1.7% | 1.3% | 0.6% | 0.4% | 1.1% | 91,496 |
| A - J 2004 | 71.8% | 15.9% | 5.5% | 2.7% | 1.7% | 0.9% | 0.6% | 0.3% | 0.6% | 88,213 |
| J - S 2004 | 70.6% | 17.9% | 5.4% | 2.5% | 1.4% | 0.8% | 0.4% | 0.3% | 0.6% | 84,455 |
| O - D 2004 | 68.9% | 17.3% | 7.0% | 2.6% | 1.4% | 0.9% | 0.7% | 0.4% | 0.7% | 91,915 |
| J - D 2004 | 70.3% | 17.1% | 5.8% | 2.7% | 1.6% | 1.0% | 0.6% | 0.3% | 0.8% | 356,079 |
| J - M 2005 | 68.4% | 16.4% | 7.0% | 3.3% | 1.7% | 1.3% | 0.6% | 0.4% | 0.9% | 86,944 |
| A - J 2005 | 70.1% | 15.6% | 6.9% | 2.9% | 1.9% | 0.7% | 0.5% | 0.3% | 1.0% | 91,489 |

Source: CH4 Part 1

²Refer to Technical Notes – Point 13

Technical Notes

1. The sources for the data contained in this release are the Information Returns CH1, CH2, CH3 and CH4. These returns collect information from Hospital Trusts on a quarterly basis.
2. Trust based information (CH1, CH2, CH3 and CH4) returns include all patients living outside Northern Ireland and all privately funded patients waiting for treatment in Health Service hospitals. This Trust based information falls within the scope of National Statistics.
3. The presentation of the inpatient waiting list (ordinary and day case admissions) data in this publication has changed this quarter. Those patients waiting 18 months and over will continue to be monitored but an additional category has been introduced to monitor patients waiting 12 months and over. Patients waiting 12 months and over include all patients in the following time bands: 12-14, 15-17, 18-20, 21-23 and 24+ months. Patients waiting 18 months and over include all patients in the following time bands: 18-20, 21-23 and 24+ months.
4. Inpatient waiting list data comprises the number of patients waiting for ordinary admission to hospital and the number of patients waiting for day case treatment.
5. Ordinary admissions include both (a) patients admitted electively with the expectation that they will remain in hospital for at least one night, and (b) non-elective admissions (e.g. emergency admissions). A patient who is admitted with either of the above intentions, but who leaves hospital for any reason without staying overnight, is still counted as an ordinary admission. Day cases are not included.
6. Day Cases are patients admitted electively during the course of a day with the intention of receiving care who do not require the use of a hospital bed overnight and who return home as scheduled. If this original intention is not fulfilled and the patient stays overnight, such a patient is counted as an ordinary admission.
7. The waiting list inpatient figures presented include people waiting to be admitted as inpatients either as day cases or ordinary admissions. They do not include:
 - Patients admitted as emergency cases;
 - Outpatients;
 - Patients undergoing a planned programme of treatment e.g. a series of admissions for chemotherapy;
 - Maternity (specialties 510 and 520);
 - Patients already in hospitals but included on other waiting lists;
 - Patients who are temporarily suspended from waiting lists.
8. Waiting time begins from the date the clinician decided to admit the patient. Patients subsequently offered a date but unable to attend have their waiting times calculated from the most recent date offered. These are known as self-deferred cases and are excluded from the total number waiting.
9. Revisions to inpatient waiting list statistics since the last publication:
 - The number of patients waiting for ordinary admission or day case treatment for quarter ending 31st March 2005 has been revised following an amendment received from Greenpark Healthcare HSS Trust.
 - Figures for quarter ending 30th June 2004 were corrected after finding an administrative error. Some ordinary admissions in Ulster Community & Hospitals HSS Trust were found to be day cases. The overall inpatient total was unaffected.

10. The monthly monitoring information previously contained in Tables 5 and 6 has been removed from the Statistics Release as the data does not come within the scope of National Statistics. The revised Statistics Release contains only quarterly monitoring information that falls within the scope of National Statistics. The monthly monitoring information is available from Hospital Information Branch on request.
11. Outpatients are defined as patients still waiting for their first outpatient appointment at the end of the quarter. An outpatient appointment is to enable a patient to see a consultant, a member of his firm or locum for such a member, in respect of one referral.
12. Outpatient waiting list figures presented do not include maternity specialties 510 and 520.
13. Due to reasons beyond the control of the Trust, United Hospitals HSS Trust has been unable to produce CH4 data for all quarters between December 2001 and June 2005. This Trust has provided estimated totals for these quarters and estimates for each time band have been calculated. These new estimates for the missing data for the United Group of Hospitals have been included in the data shown in Table 7. When CH4 data becomes available these estimates will be recast.
14. Department of Health, Social Services and Public Safety policy is to publish revised figures with subsequent statistical releases unless it is decided that the magnitude of the change merits earlier notification.
15. Figures relating to the quarter ending 30th September 2005 will be released on Thursday, 1st December 2005.
16. For general enquiries about National Statistics, contact the National Statistics Public Service on

020 7533 5888

minicom: 01633 812399

E-mail: info@statistics.gov.uk

Fax: 01633 652747

Letters: room DG/18, Drummond Gate,
LONDON SW1V 2QQ

You can also find National Statistics on the internet – Go to <http://www.statistics.gov.uk>

Additional Information

Further information on waiting lists in Northern Ireland is available from:

Office Information Manager
Hospital Information Branch
Department of Health, Social Services and Public Safety
Annexe 2
Castle Buildings
Stormont
BT4 3SQ

E-mail: rib@dhsspsni.gov.uk

Internet address: <http://www.dhsspsni.gov.uk/stats&research/order.asp#waiting>