

# Information Release

Department of Health, Social Services and Public Safety

5<sup>th</sup> December 2002

## Northern Ireland Waiting Lists – September 2002

This information release gives details of the number of people waiting for inpatient or outpatient treatment at hospitals in Northern Ireland at the end of September 2002, the most recent quarter for which figures are available.

### Inpatients

#### Headline Totals – Table 1

The total number of patients waiting to be admitted to hospitals in Northern Ireland at the end of September 2002 stood at 60,190.

Over the quarter, comparing the end of September 2002 with the end of June 2002 (59,951), the total number waiting has increased by 239 (0.4%).

Over the year, comparing the end of September 2002 with the end of September 2001 (56,713), the total number waiting increased by 3,477 (6.1%).

**Table 1: Quarterly Waiting Lists – September 2002**

| Waiting for:        | Quarter ending September 2002 | Change compared with end previous quarter | Change compared with end same quarter – previous year |
|---------------------|-------------------------------|---|---|
| Ordinary Admissions | 28,791                        | - 559                                     | - 341   |
| Day case Admissions | 31,399                        | + 798                                     | + 3,818   |
| Total Waiting       | 60,190                        | + 239                                     | + 3,477   |

Source: CHI

**Detailed notes and definitions are shown in the attached Notes to editors.**



#### A National Statistics Publication

National Statistics are produced to high professional standards set out in the National Statistics Code of Practice. They undergo regular quality assurance reviews to ensure that they meet customer needs. They are produced free from any political interference.

## Numbers Waiting for Ordinary Admission and Day Case Treatment

People on the inpatient waiting list in Northern Ireland can be waiting for admission to hospital as day cases or as ordinary admissions.

Of the 60,190 people waiting for admission to hospital at the end of September 2002, 28,791 (47.8%) were waiting for ordinary admission and 31,399 (52.2%) were waiting for day case admission (Table 1).

Since the end of June 2002, the number of cases waiting for ordinary admission has decreased by 559 (-1.9%) and the number waiting for day case admission has increased by 798 (2.6%).

In comparison with September 2001, the number of cases waiting for ordinary admission has decreased by 341 (-1.2%) and the number waiting for day case admission has increased by 3,818 (13.8%).

### Excess Waiters<sup>1</sup> – Table 2

The number of excess waiters at the end of September 2002 stood at 9,158 or 15.2% of the total waiting.

Over the quarter, comparing the end of September 2002 with the end of June 2002, the number of excess waiters increased by 235 (2.6%).

Over the year, comparing the end of September 2002 with the end of September 2001, the number of excess waiters increased by 1,413 (18.2%).

**Table 2 Excess Waiters<sup>1</sup> – September 2002**

| Waiting for:        | Quarter Ending September 2002 | Change compared with end of previous quarter | Change compared with end same quarter previous year |
|---------------------|-------------------------------|--|---|
| Ordinary admissions | 6,761                         | + 153  | + 1,136   |
| Day case admissions | 2,397                         | + 82   | + 277   |
| Total Waiting       | 9,158                         | + 235  | + 1,413   |

<sup>1</sup>See Notes to Editors (paragraph 5) for definition of Excess waiters.

Source: CH1

## Peak Figures

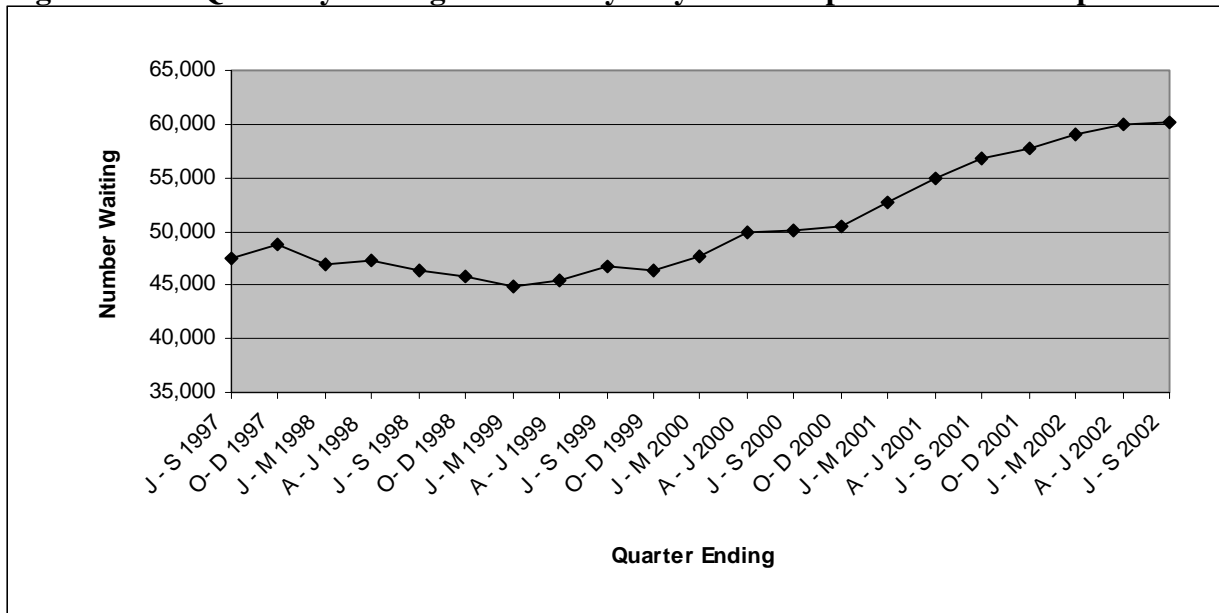
The end of September 2002 total of 60,190 on the inpatient waiting list represents an increase of 239 (0.4%) on the previous peak waiting list figure of 59,951 (end June 2002).

The number of excess waiters has continued to rise to 9,158 at the end of September 2002, and represents an increase of 235 (2.6%) on the previous peak figure of 8,923 recorded at the end of June 2002.

## Trends

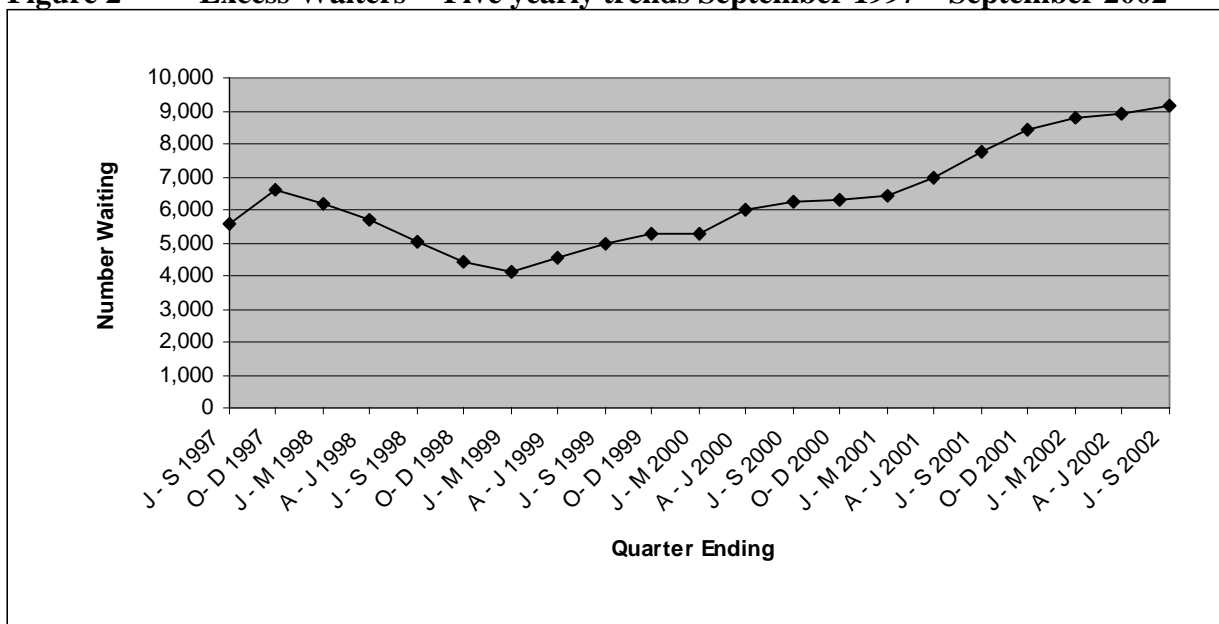
Over the past five years both the total numbers waiting and the numbers of excess waiters were on a generally upward trend until December 1997. Subsequently the total waiting went on a generally downward trend until June 1999 when the trend reversed and total waiting rose to peak in the current quarter (Figure 1). Excess waiters have followed a similar trend and also rose to peak in the current quarter (Figure 2).

**Figure 1 Quarterly waiting lists – Five yearly trends September 1997 – September 2002**



Source: CH1

**Figure 2 Excess Waiters<sup>1</sup> - Five yearly trends September 1997 – September 2002**



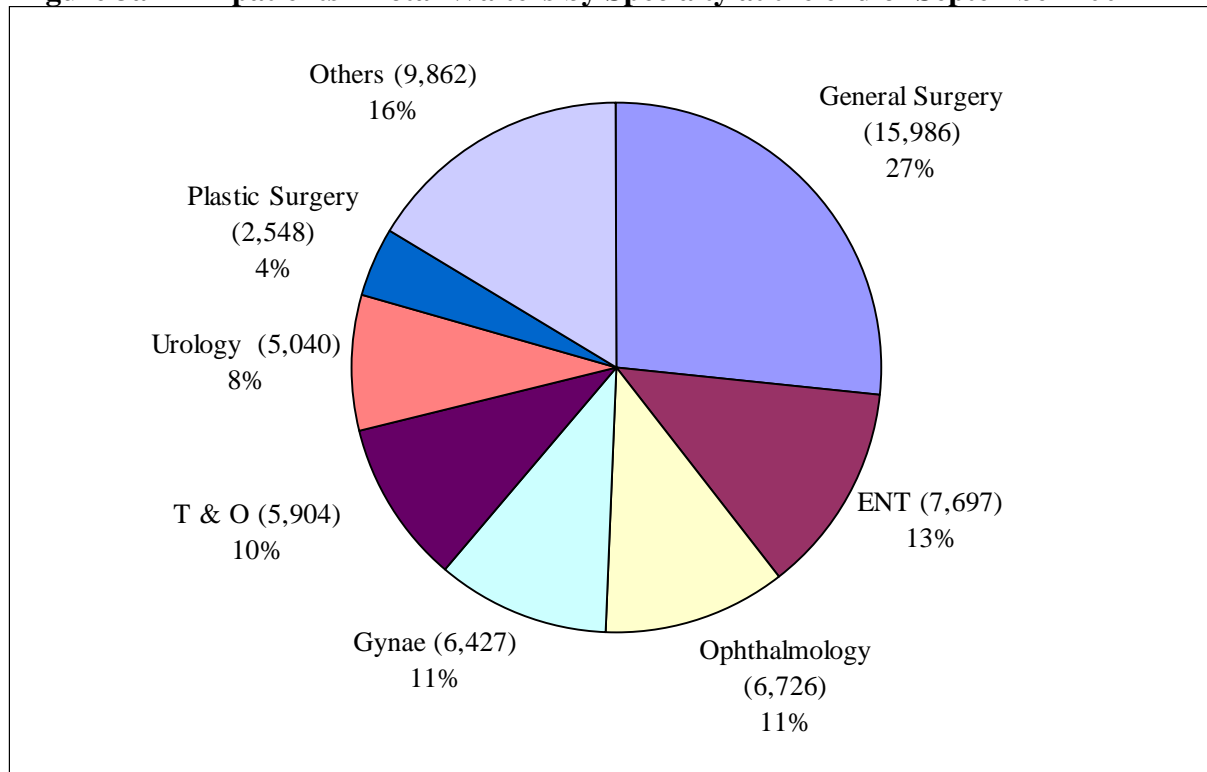
<sup>1</sup>See Notes to Editors (paragraph 5) for definition of Excess waiters.

Source: CH1

## Inpatients Waiting by Specialty

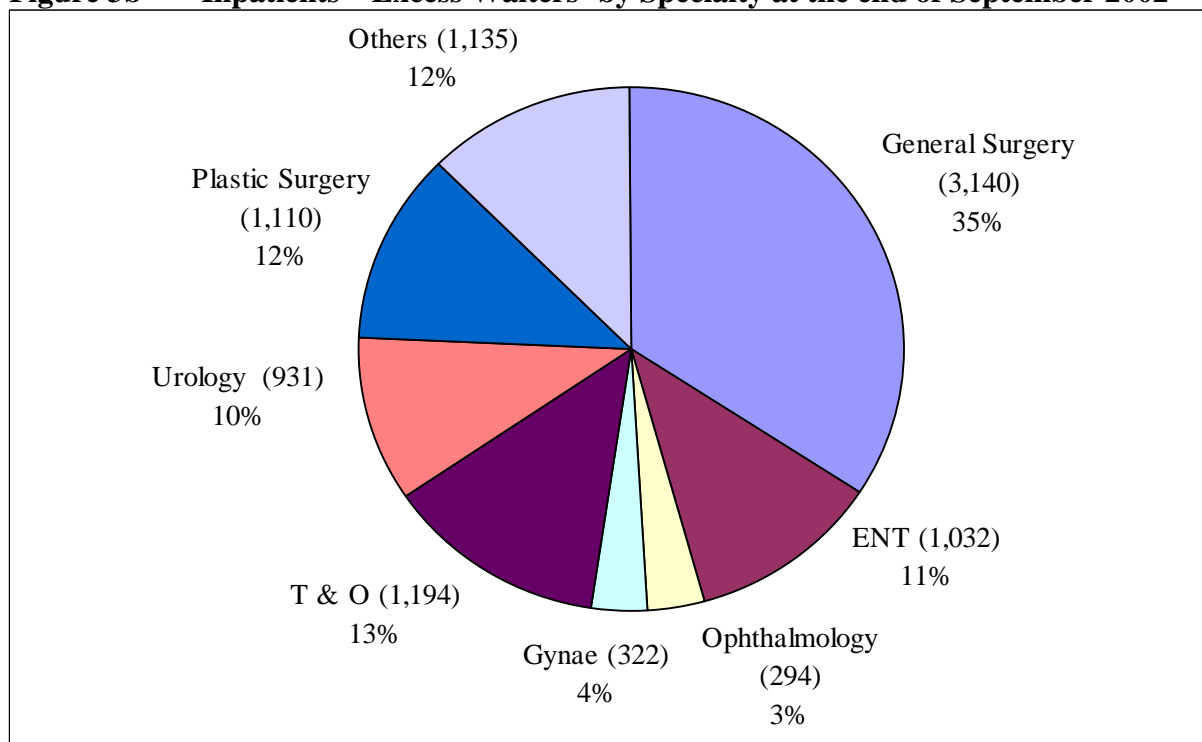
The overwhelming majority of those waiting (84%) were within seven specialties: General Surgery; Ear, Nose and Throat (ENT); Ophthalmology; Gynaecology (Gynae); Trauma and Orthopaedic Surgery (T&O); Urology and Plastic Surgery (Figure 3a). Corresponding figures for excess waiters are shown in Figure 3b.

**Figure 3a Inpatients - Total Waiters by Specialty at the end of September 2002**



Source: CH1

**Figure 3b Inpatients – Excess Waiters<sup>1</sup> by Specialty at the end of September 2002**



<sup>1</sup>See notes to editors (paragraph 5) for definition of Excess Waiters.

Source: CH1

## Completed Waits

Waiting times for completed inpatient waits are shown in Table 4. A total of 33,522 inpatients were admitted to hospital (excluding those who had previously refused an offer of attendance) during the September 2002 quarter.

**Table 4 Completed Inpatient Waits**

| Time Waiting in Months<br>(Percentage of total waits in each time band) |       |       |       |       |      |        |
|---|-------|-------|-------|-------|------|--------|
| Quarter   | 0-2   | 3-11  | 12-17 | 18-23 | 24+  | Total  |
| J - S 1999  | 75.8% | 20.2% | 2.7%  | 0.7%  | 0.6% | 33,518 |
| O - D 1999  | 77.0% | 18.7% | 2.7%  | 0.8%  | 0.7% | 35,765 |
| J - M 2000  | 75.4% | 20.1% | 3.0%  | 0.8%  | 0.7% | 35,637 |
| A - J 2000  | 76.4% | 19.5% | 2.6%  | 0.8%  | 0.7% | 36,307 |
| J - S 2000  | 74.2% | 21.2% | 2.9%  | 1.0%  | 0.7% | 33,322 |
| O - D 2000  | 76.7% | 18.9% | 2.9%  | 0.8%  | 0.7% | 37,183 |
| J - M 2001  | 76.9% | 18.7% | 2.7%  | 0.8%  | 0.8% | 36,377 |
| A - J 2001  | 76.6% | 19.4% | 2.5%  | 0.8%  | 0.7% | 35,858 |
| J - S 2001  | 74.4% | 20.8% | 3.1%  | 1.0%  | 0.8% | 33,271 |
| O - D 2001  | 75.0% | 20.0% | 3.1%  | 1.0%  | 0.9% | 37,656 |
| J - M 2002  | 74.9% | 19.7% | 3.6%  | 1.1%  | 0.8% | 38,042 |
| A - J 2002  | 74.4% | 20.4% | 3.3%  | 1.0%  | 0.9% | 36,885 |
| J - S 2002  | 72.9% | 21.9% | 3.3%  | 1.1%  | 0.7% | 33,522 |

Source: CH2 Part 1

## Monthly Inpatient Waiting Lists

The Department also collects monthly data on the size of the inpatient waiting list excluding private patients and non-NI residents. These figures are shown in Tables 5 and 6.

**Table 5 Monthly Inpatient Waiting Lists**

| Month Ending    | Admission |          | Total Waiting | Excess waiters |            |
|-----------------|-----------|----------|---------------|----------------|------------|
|                 | Ordinary  | Day case |               | Number         | % of total |
| September 2001  | 28,532    | 26,327   | 54,859        | 7,602          | 13.9%      |
| October 2001    | 28,121    | 26,873   | 54,994        | 7,571          | 13.8%      |
| November 2001   | 28,479    | 26,819   | 55,298        | 7,846          | 14.2%      |
| December 2001   | 28,725    | 27,370   | 56,095        | 8,277          | 14.8%      |
| January 2002    | 29,293    | 27,890   | 57,183        | 8,388          | 14.7%      |
| February 2002   | 29,426    | 28,050   | 57,476        | 8,468          | 14.7%      |
| March 2002      | 29,091    | 28,217   | 57,308        | 8,673          | 15.1%      |
| April 2002      | 28,994    | 29,249   | 58,243        | 8,886          | 15.3%      |
| May 2002        | 29,443    | 29,484   | 58,927        | 9,044          | 15.3%      |
| June 2002       | 29,161    | 29,324   | 58,485        | 9,125          | 15.6%      |
| July 2002       | 29,102    | 30,486   | 59,588        | 9,385          | 15.7%      |
| August 2002     | 29,141    | 30,194   | 59,335        | 9,673          | 16.3%      |
| September 2002* | 28,534    | 30,102   | 58,636        | 9,254          | 15.8%      |

Source: CHA

\*Estimated Figures – See Note 16

The monthly waiting list figures have shown an overall increase in the 3 month period since June 2002. This confirms the upward trend shown in the quarterly waiting list figures.

Patients resident in a Health Board Area may receive treatment in any of the four Health Boards. Table 6 shows the number of residents in each Health Board Area waiting for admission to hospitals in their own and other Health Board Areas.

**Table 6 Monthly Inpatient Waiting Lists by Board of Residence and Board of Treatment**

| Board of Residence      | Board of Treatment |              |              |              |
|-------------------------|--------------------|--------------|--------------|--------------|
|                         | EHSSB              | NHSSB        | SHSSB        | WHSSB        |
| Eastern                 | 23,161             | 94           | 87           | 0            |
| Northern                | 6,246              | 8,803        | 450          | 663          |
| Southern                | 4,217              | 30           | 8,316        | 172          |
| Western                 | 1,200              | 61           | 70           | 5,066        |
| <b>Northern Ireland</b> | <b>34,824</b>      | <b>8,988</b> | <b>8,923</b> | <b>5,901</b> |

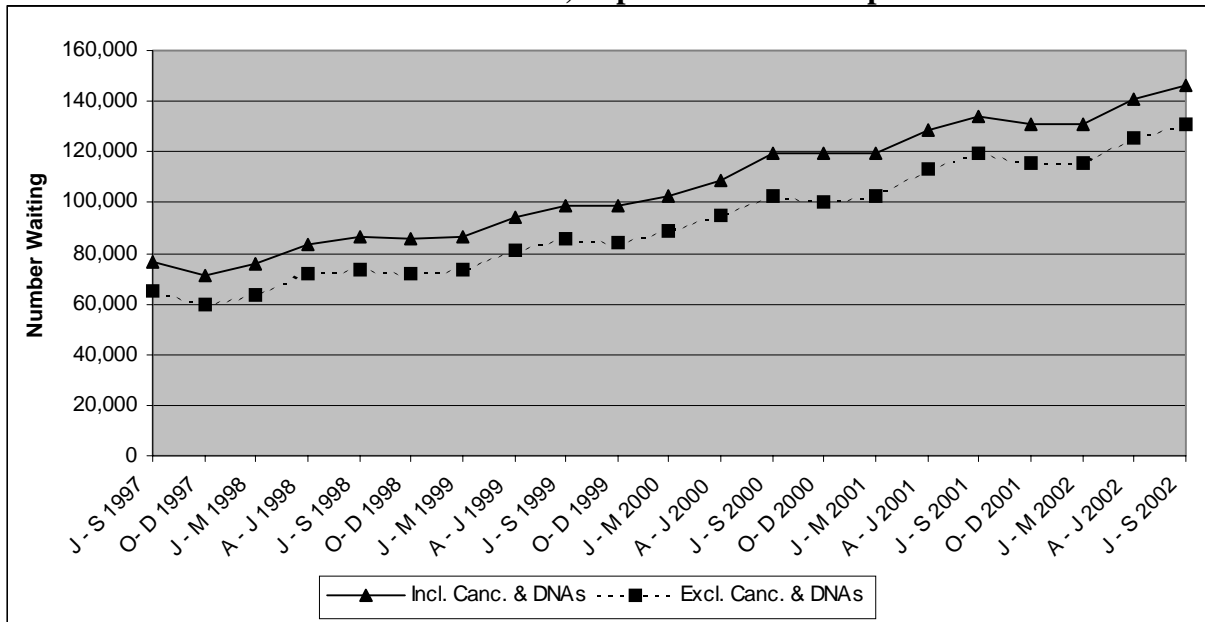
Source: CHA

# Outpatients

## Headline Totals

The number of patients waiting for admission as outpatients (including cancellations and deferrals) at the end of September 2002 stood at 146,503 representing an increase of 5,858 (+4.2%) over the quarter\* and an increase of 12,529 (9.4%) compared with the same quarter in the previous year\*. Corresponding quarterly and annual changes (excluding cancellations and deferrals) were 4.0% and 9.9% respectively. Outpatient waiting lists have been on a generally upward trend for more than four years. (Figure 4).

**Figure 4 Outpatients Waiting for a First Appointment (including and excluding cancellations and deferrals) September 1997 – September 2002**



Source: CH3 Parts 1&2.

## Outpatient Completed Waits

Waiting times for completed outpatient waits are shown in Table 7. During the September 2002 quarter a total of 79,986 outpatients attended their first appointment without having cancelled or missed a previous appointment.

**Table 7 Completed Outpatient Waits for First Appointment**

| Quarter     | Time Waiting in Months<br>(Percentage of total waits in each time band) |       |       |       |      | Total  |
|-------------|---|-------|-------|-------|------|--------|
|             | 0-2   | 3-11  | 12-17 | 18-23 | 24+  |        |
| J - S 1999  | 77.3%   | 21.7% | 0.8%  | 0.2%  | 0.1% | 75,075 |
| O - D 1999  | 76.5%   | 22.4% | 0.8%  | 0.2%  | 0.1% | 82,658 |
| J - M 2000  | 77.0%   | 21.7% | 0.9%  | 0.2%  | 0.1% | 84,604 |
| A - J 2000  | 78.5%   | 20.1% | 0.9%  | 0.3%  | 0.2% | 77,699 |
| J - S 2000  | 75.4%   | 23.1% | 1.2%  | 0.2%  | 0.1% | 75,721 |
| O - D 2000  | 74.5%   | 23.5% | 1.6%  | 0.3%  | 0.2% | 84,326 |
| J - M 2001  | 75.6%   | 22.5% | 1.3%  | 0.4%  | 0.2% | 86,024 |
| A - J 2001* | 77.2%   | 21.0% | 1.2%  | 0.4%  | 0.2% | 82,161 |
| J - S 2001* | 74.4%   | 23.7% | 1.2%  | 0.5%  | 0.3% | 77,880 |
| O - D 2001* | 72.4%   | 24.7% | 1.8%  | 0.7%  | 0.3% | 88,331 |
| J - M 2002* | 72.4%   | 25.3% | 1.4%  | 0.6%  | 0.3% | 85,856 |
| A - J 2002* | 74.9%   | 22.7% | 1.4%  | 0.5%  | 0.4% | 82,282 |
| J - S 2002* | 71.0%   | 26.3% | 1.8%  | 0.4%  | 0.4% | 79,986 |

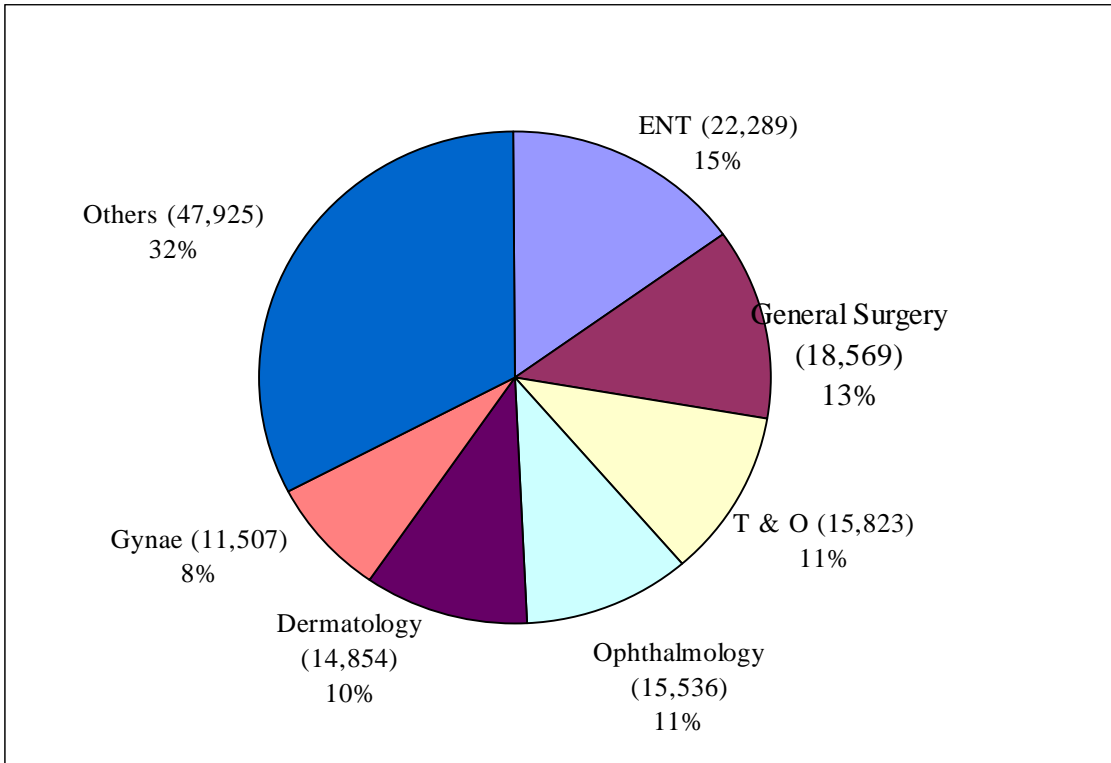
Source: CH4 Part 1

\* Estimated figures – See note 15.

## Outpatients Waiting by Specialty

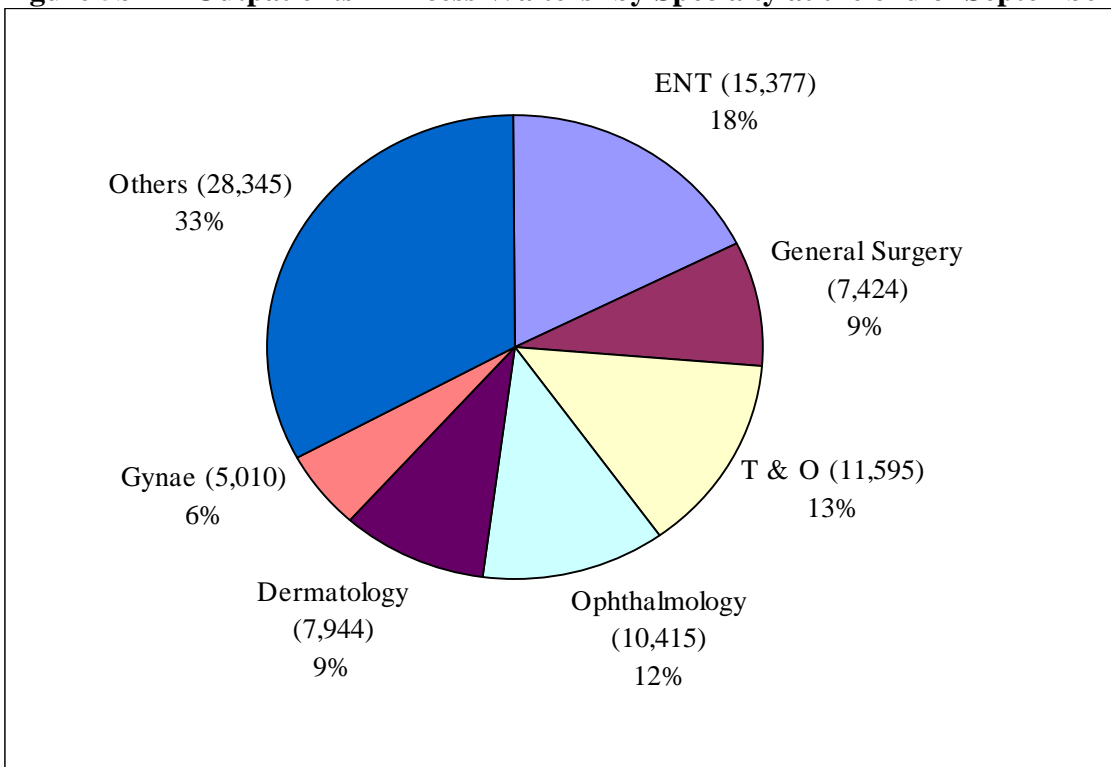
The majority of those waiting (68%) were within six specialties: Ear, Nose and Throat (ENT); General Surgery; Trauma and Orthopaedic Surgery (T&O); Ophthalmology; Dermatology and Gynaecology (Gynae) (Figure 5a). Corresponding figures for excess waiters are shown in Figure 5b. All figures include those who are waiting for their first appointment including those who have cancelled or missed a previous appointment during the September 2002 quarter.

**Figure 5a Outpatients – Total Waiters by Specialty at the end of September 2002**



Source: CH3.

**Figure 5b Outpatients – Excess Waiters<sup>1</sup> by Specialty at the end of September 2002**



<sup>1</sup>See notes to editors (paragraph 6) for definition of Excess Waiters.  
Source: CH3.

## Notes to Editors

1. Unless otherwise stated hospitals and patients mentioned in this release refer only to HPSS hospitals and patients.
2. The sources for the data contained in this release are the Charter Monitoring Returns CH1, CH2, CH3 and CH4. These returns collect information from Hospital Trusts on a quarterly basis. The CHA return collects information from Health Boards on a monthly basis.
3. There is a fundamental difference in coverage between Board based and Trust based information. Board based (CHA) returns exclude all patients living outside Northern Ireland and all privately funded patients waiting for treatment in Health Service hospitals.
4. Apart from Tables 5 and 6, figures include all privately funded patients waiting for treatment in Health Service hospitals and those patients who are resident outside Northern Ireland.
5. In Northern Ireland, inpatient excess waiters are defined as those having to wait 12 months or more for admission to the Cardiac Surgery specialty and those having to wait 18 months or more to other specialties.
6. For outpatients, excess waiters are defined as those having to wait more than 3 months for a first outpatient appointment.
7. Ordinary admissions include both (a) patients admitted electively with the expectation that they will remain in hospital for at least one night, and (b) non-elective admissions (e.g. emergency admissions). A patient who is admitted with either of the above intentions, but who leaves hospital for any reason without staying overnight, is still counted as an ordinary admission. Day cases are not included.
8. Day Cases are patients admitted electively during the course of a day with the intention of receiving care who do not require the use of a hospital bed overnight and who return home as scheduled. If this original intention is not fulfilled and the patient stays overnight, such a patient is counted as an ordinary admission.
9. The inpatient figures presented include people waiting to be admitted as inpatients either as day cases or ordinary admissions. They do not include:
  - Patients admitted as emergency cases;
  - Outpatients;
  - Patients undergoing a planned programme of treatment e.g. a series of admissions for chemotherapy;
  - Maternity (specialties 510 and 520);
  - Patients already in hospitals but included on other waiting lists;
  - Patients who are temporarily suspended from waiting lists.
10. Outpatient waiting list figures presented do not include maternity specialties 510 and 520.
11. Waiting time begins from the date the clinician decided to admit the patient. Patients subsequently offered a date but unable to attend have their waiting times calculated from the most recent date offered. These are known as self-deferred cases and are included in the total waiting.
12. The source for the monthly waiting list figures is the monthly CHA return. The monthly figures presented here are produced from an ad-hoc reporting system which does not go through the

more stringent validation processes which produce the quarterly figures. For this reason and the fact that the two sets of figures are run-off at different points in time mean that there may be anomalies when comparing the monthly figures with the quarterly figures.

13. Health Board residents included in Table 6 are not always assigned a Health Board of treatment as some patients may be waiting for admission to a hospital outside Northern Ireland.
14. As a result of updated information received, a revision has been made to the inpatient waiting list figures for the quarter ending June 2002, the figure has been changed from 59,674 to 59,951.
15. Due to reasons beyond the control of the Trust, United Hospitals HSS Trust has been unable to produce CH4 data for all quarters between March and September 2002. This Trust has provided estimated totals for these quarters and estimates for each time band have been calculated. These new estimates for the missing data for the United Group of Hospitals have been included in the data shown in Table 7. When CH4 data becomes available these estimates will be recast.
16. Greenpark HSS Trust was unable to provide waiting list figures for long waiters in the Trauma and Orthopaedic Specialty by Health Board of Residence for month ending September 2002. Estimated figures have been included in the monthly data shown in Tables 5 and 6.
17. Some of the data is provisional and may be subject to revision in subsequent quarters.
18. Figures relating to the quarter ending December 2002 will be released on Thursday, 6<sup>th</sup> March 2003.
19. For general enquiries about National Statistics, contact the National Statistics Public Service on

**020 7533 5888**

minicom: 01633 812399

E-mail: [info@statistics.gov.uk](mailto:info@statistics.gov.uk)

Fax: 01633 652747

Letters: room DG/18, Drummond Gate,  
LONDON SW1V 2QQ

You can also find National Statistics on the internet – Go to [www.statistics.gov.uk](http://www.statistics.gov.uk).

### **Additional Information**

Further information on waiting lists in Northern Ireland is available from:

Office Information Manager  
Regional Information Branch  
Department of Health, Social Services and Public Safety  
Annexe 2  
Castle Buildings  
Stormont  
BT4 3UD

Internet address: [www.dhsspsni.gov.uk/publications/index.html](http://www.dhsspsni.gov.uk/publications/index.html)