

# Statistics Release



Department of  
**Health, Social Services  
and Public Safety**

An Roinn  
**Sláinte, Seirbhísí Sóisialta  
agus Sábháilteachta Poiblí**

[www.dhsspsni.gov.uk](http://www.dhsspsni.gov.uk)

2<sup>nd</sup> December 2004

## Northern Ireland Waiting Lists – September 2004

This information release gives details of the number of people waiting for inpatient or outpatient treatment at hospitals in Northern Ireland at the end of September 2004, the most recent quarter for which figures are available.

### Inpatients

#### Headline Totals – Table 1

The total number of patients waiting to be admitted to hospitals in Northern Ireland at the end of September 2004 stood at 50,684.

Over the quarter, comparing the end of September 2004 with the end of June 2004 (50,975), the total number waiting has decreased by 291 (-0.6%).

Over the year, comparing the end of September 2004 with the end of September 2003 (54,257), the total number waiting decreased by 3,573 (-6.6%).

**Table 1: Quarterly Waiting Lists – September 2004**

Waiting for:	Quarter Ending September 2004	Change compared with end of previous quarter	Change compared with end same quarter – previous year
Ordinary Admissions	21,264	-2,402	-3,069
Day case Admissions	29,420	+ 2111	-504
Total Waiting	50,684	-291	-3,573

Source: CH1

**Detailed notes and definitions are provided in the Technical Notes.**



### A National Statistics Publication

National Statistics are produced to high professional standards set out in the National Statistics Code of Practice. They undergo regular quality assurance reviews to ensure that they meet customer needs. They are produced free from any political interference.

## Numbers Waiting for Ordinary Admission and Day Case Treatment

People on the inpatient waiting list in Northern Ireland can be waiting for admission to hospital as day cases or as ordinary admissions.

Of the 50,684 people waiting for admission to hospital at the end of September 2004, 21,264 (42.0%) were waiting for ordinary admission and 29,420 (58.0%) were waiting for day case admission (Table 1).

Since the end of June 2004, the number of cases waiting for ordinary admission has decreased by 2,402 (-10.1%) and the number waiting for day case admission has increased by 2,111 (7.7%).

In comparison with September 2003, the number of cases waiting for ordinary admission has decreased by 3,069 (-12.6%) and the number waiting for day case admission has decreased by 504 (-1.7%).

### Excess Waiters<sup>1</sup> – Table 2

In Northern Ireland, inpatient excess waiters are defined as those having to wait 12 months or more for admission to the Cardiac Surgery specialty and those having to wait 18 months or more to other specialties.

The number of excess waiters at the end of September 2004 stood at 3,095 or 6.1% of the total waiting.

Over the quarter, comparing the end of September 2004 with the end of June 2004, the number of excess waiters decreased by 140 (-4.3%).

Over the year, comparing the end of September 2004 with the end of September 2003, the number of excess waiters decreased by 3,571 (-53.6%).

**Table 2 Excess Waiters<sup>1</sup> – September 2004**

<b>Waiting for:</b>	<b>Quarter Ending September 2004</b>	<b>Change compared with end of previous quarter</b>	<b>Change compared with end same quarter - previous year</b>
Ordinary admissions	2,407	-94	-2,566
Day case admissions	688	-46	-1,005
<b>Total Waiting</b>	<b>3,095</b>	<b>-140</b>	<b>-3,571</b>

Source: CHI

<sup>1</sup> Refer to Technical Notes – point 5.

## Peak Figures

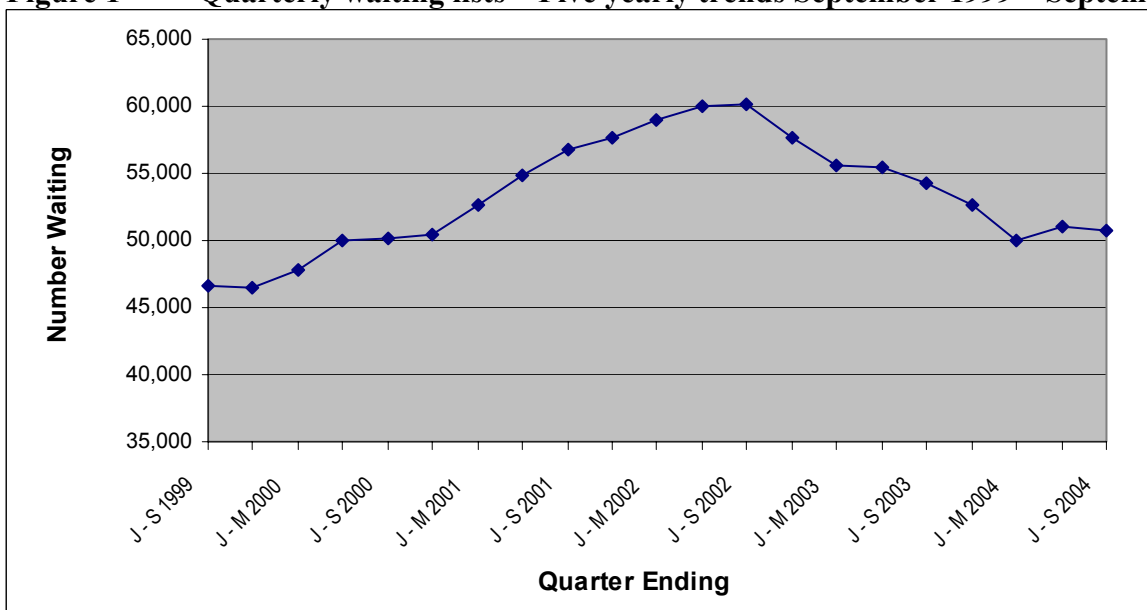
The end of September 2004 total of 50,684 on the inpatient waiting list represents a decrease of 9,506 (-15.8%) on the peak waiting list figure of 60,190 (end September 2002).

The number of excess waiters has fallen to 3,095 at the end of September 2004, and represents a decrease of 6,063 (-66.2%) on the peak figure of 9,158 recorded at the end of September 2002.

## Trends

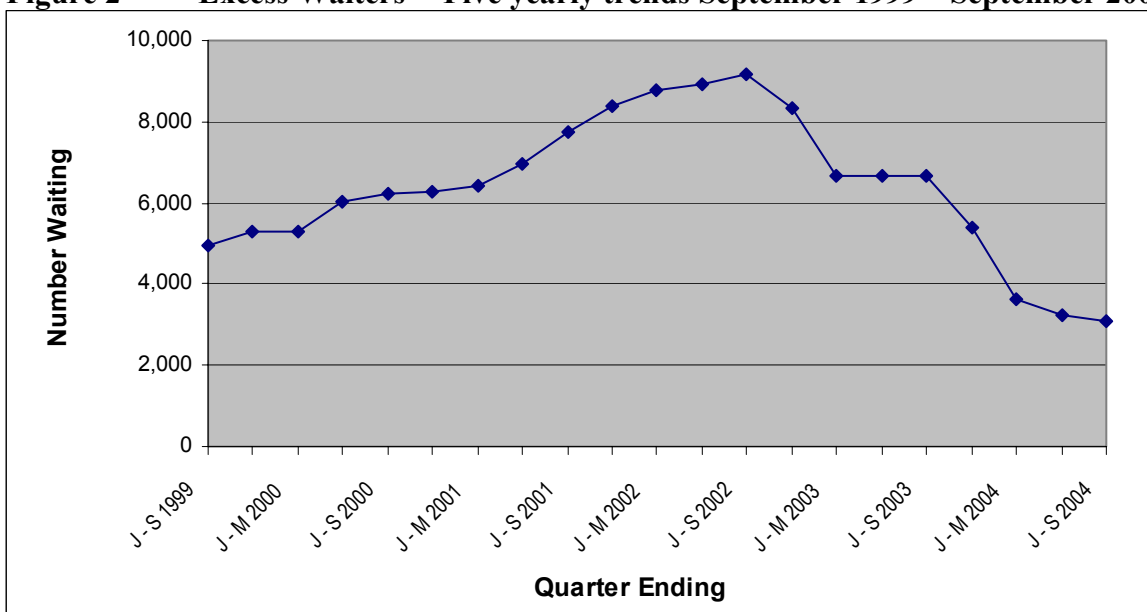
The total number of people waiting was on a generally upward trend from June 1999, and rose to peak in September 2002. The trend reversed and the total number of people waiting decreased between December 2002 and March 2004. The total number of people waiting increased slightly during the quarter ending June 2004, but has decreased in the current quarter (Figure 1). Excess waiters have followed a similar trend, but continued to decrease in the quarter ending June 2004 and the current quarter. (Figure 2).

**Figure 1** Quarterly waiting lists – Five yearly trends September 1999 – September 2004



Source: CH1

**Figure 2** Excess Waiters<sup>1</sup> - Five yearly trends September 1999 – September 2004



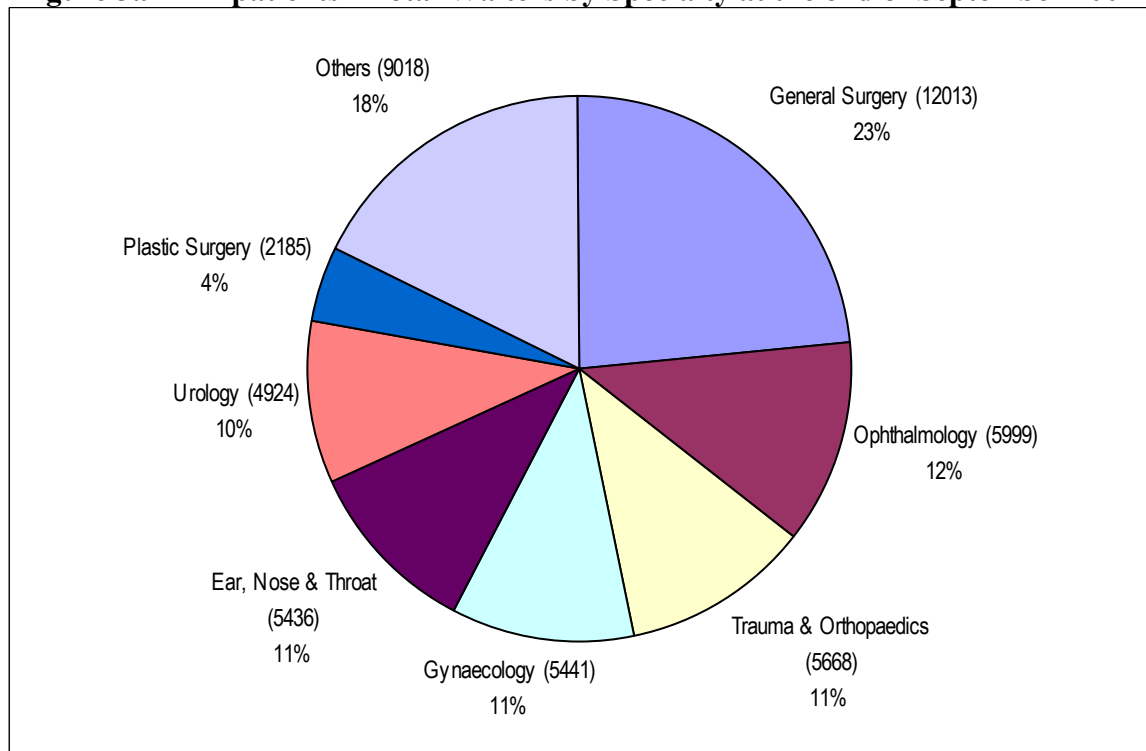
Source: CH1

<sup>1</sup> Refer to Technical Notes – point 5.

## Inpatients Waiting by Specialty

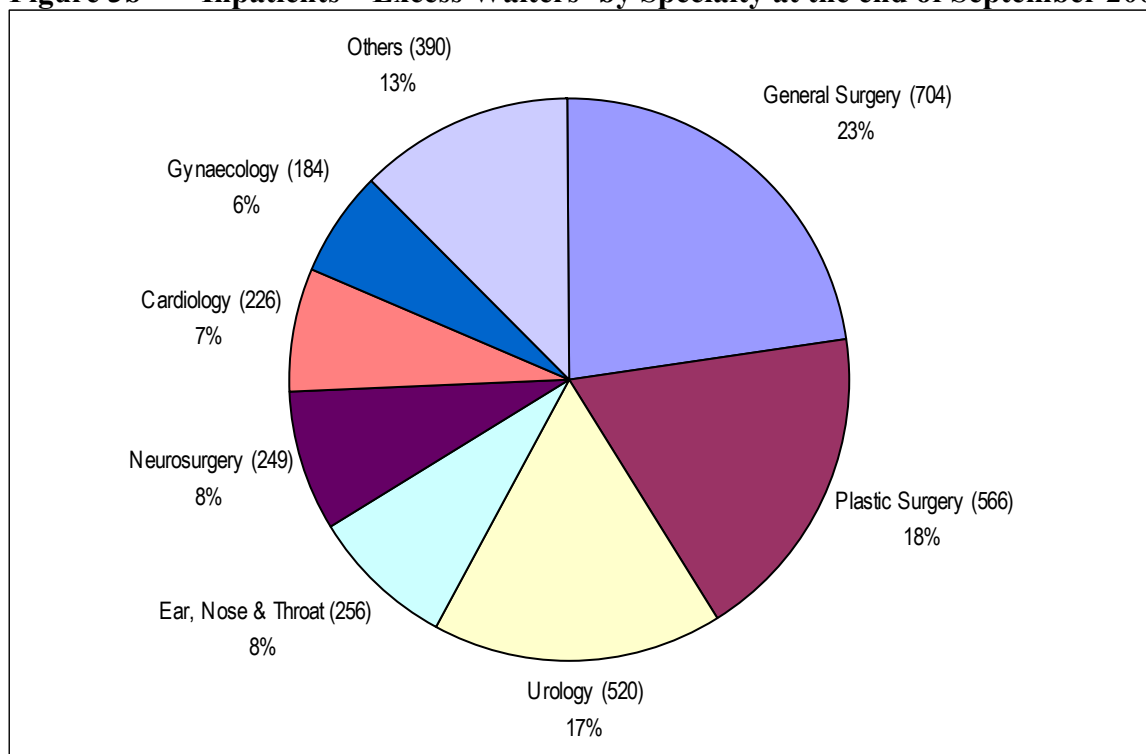
The overwhelming majority of those waiting (82%) were within seven specialties: General Surgery; Ophthalmology; Trauma and Orthopaedic Surgery (T&O); Gynaecology (Gynae); Ear, Nose and Throat (ENT); Urology and Plastic Surgery (Figure 3a). Corresponding figures for excess waiters are shown in Figure 3b.

**Figure 3a Inpatients - Total Waiters by Specialty at the end of September 2004**



Source: CH1

**Figure 3b Inpatients – Excess Waiters<sup>1</sup> by Specialty at the end of September 2004**



Source: CH1

<sup>1</sup> Refer to Technical Notes – point 5.

## Inpatient Waiting Time by Specialty

Waiting times for inpatients by specialty are shown in Tables 3a and 3b. The proportion of those waiting less than 12 months ranged from 100% in Paediatric Dentistry to 38.1% in Neurosurgery. Overall over four fifths (87.4%) of those waiting for admission were waiting less than 12 months.

**Table 3a Number of Patients Waiting for Admission by Months Waiting and Specialty – September 2004**

Specialty	Patients Waiting for Admission by Months Waiting					Total Number of Patients Awaiting Admission
	0 - 2	3 - 11	12 - 17	18 - 23	24 +	
General Surgery	5,637	4,958	714	318	386	12,013
Ophthalmology	2,361	3,215	309	80	34	5,999
Trauma & Orthopaedics	1,619	3,397	502	106	44	5,668
Gynaecology	2,681	2,217	359	114	70	5,441
Ear, Nose & Throat	1,741	3,021	418	157	99	5,436
Urology	2,017	2,019	368	199	321	4,924
Plastic Surgery	649	736	234	128	438	2,185
General Medicine	1,417	405	6	0	1	1,829
Cardiology	695	487	122	111	115	1,530
Gastroenterology	907	346	30	2	3	1,288
Paediatric Surgery	231	323	88	22	2	666
Rheumatology	455	176	1	0	0	632
Oral Surgery	176	273	31	26	18	524
Pain Management	213	278	17	2	2	512
Neurosurgery	49	135	50	49	200	483
Cardiac Surgery	153	166	6	0	1	326
Dermatology	186	113	14	4	1	318
Neurology	86	86	18	5	0	195
Thoracic Surgery	65	72	21	11	19	188
Paediatric Dentistry	85	63	0	0	0	148
Other	313	63	2	1	0	379
<b>All Specialties</b>	<b>21,736</b>	<b>22,549</b>	<b>3,310</b>	<b>1,335</b>	<b>1,754</b>	<b>50,684</b>

Source: CHI

**Table 3b Percentage of Patients Waiting for Admission by Months Waiting and Specialty – September 2004**

Specialty	Patients Waiting for Admission by Months Waiting				
	0 - 2	3 - 11	12 - 17	18 - 23	24 +
General Surgery	46.9%	41.3%	5.9%	2.6%	3.2%
Ophthalmology	39.4%	53.6%	5.2%	1.3%	0.6%
Trauma & Orthopaedic	28.6%	59.9%	8.9%	1.9%	0.8%
Gynaecology	49.3%	40.7%	6.6%	2.1%	1.3%
Ear, Nose & Throat	32.0%	55.6%	7.7%	2.9%	1.8%
Urology	41.0%	41.0%	7.5%	4.0%	6.5%
Plastic Surgery	29.7%	33.7%	10.7%	5.9%	20.0%
General Medicine	77.5%	22.1%	0.3%	0.0%	0.1%
Cardiology	45.4%	31.8%	8.0%	7.3%	7.5%
Gastroenterology	70.4%	26.9%	2.3%	0.2%	0.2%
Paediatric Surgery	34.7%	48.5%	13.2%	3.3%	0.3%
Rheumatology	72.0%	27.8%	0.2%	0.0%	0.0%
Oral Surgery	33.6%	52.1%	5.9%	5.0%	3.4%
Pain Management	41.6%	54.3%	3.3%	0.4%	0.4%
Neurosurgery	10.1%	28.0%	10.4%	10.1%	41.4%
Cardiac Surgery	46.9%	50.9%	1.8%	0.0%	0.3%
Dermatology	58.5%	35.5%	4.4%	1.3%	0.3%
Neurology	44.1%	44.1%	9.2%	2.6%	0.0%
Thoracic Surgery	34.6%	38.3%	11.2%	5.9%	10.1%
Paediatric Dentistry	57.4%	42.6%	0.0%	0.0%	0.0%
Other	82.6%	16.6%	0.5%	0.3%	0.0%
<b>All Specialties</b>	<b>42.9%</b>	<b>44.5%</b>	<b>6.5%</b>	<b>2.6%</b>	<b>3.5%</b>

Source: CHI

## Completed Waits

Waiting times for completed inpatient waits are shown in Table 4. A total of 37,025 inpatients were admitted to hospital (excluding those who had previously refused an offer of attendance) during the September 2004 quarter. 73.1% of patients received their treatment within 3 months of being placed on the waiting list and 95.3% received their treatment within 12 months.

**Table 4 Completed Inpatient Waits<sup>2</sup>**

Quarter	Time Waiting in Months					Total
	0 - 2	3 - 11	12 - 17	18 - 23	24+	
J - M 2001	76.9%	18.7%	2.7%	0.8%	0.8%	36,377
A - J 2001	76.6%	19.4%	2.5%	0.8%	0.7%	35,858
J - S 2001	74.4%	20.8%	3.1%	1.0%	0.8%	33,271
O - D 2001	75.0%	20.0%	3.1%	1.0%	0.9%	37,656
<b>J - D 2001</b>	<b>75.7%</b>	<b>19.7%</b>	<b>2.9%</b>	<b>0.9%</b>	<b>0.8%</b>	<b>143,162</b>
J - M 2002	74.9%	19.7%	3.6%	1.1%	0.8%	38,042
A - J 2002	74.4%	20.4%	3.3%	1.0%	0.9%	36,907
J - S 2002	72.6%	22.1%	3.4%	1.1%	0.8%	33,861
O - D 2002	73.6%	20.5%	3.6%	1.2%	1.0%	38,591
<b>J - D 2002</b>	<b>73.9%</b>	<b>20.7%</b>	<b>3.5%</b>	<b>1.1%</b>	<b>0.9%</b>	<b>147,401</b>
J - M 2003	73.6%	19.7%	3.9%	1.5%	1.3%	38,987
A - J 2003	73.9%	20.9%	3.2%	1.0%	1.0%	38,512
J - S 2003	71.9%	22.8%	2.9%	1.2%	1.1%	35,605
O - D 2003	72.7%	21.3%	3.1%	1.4%	1.5%	38,906
<b>J - D 2003</b>	<b>73.0%</b>	<b>21.1%</b>	<b>3.3%</b>	<b>1.3%</b>	<b>1.2%</b>	<b>152,010</b>
J - M 2004	74.4%	20.0%	3.2%	1.1%	1.3%	40,924
A - J 2004	74.6%	20.5%	3.1%	0.9%	0.9%	38,507
J - S 2004	73.1%	22.2%	3.0%	1.0%	0.7%	37,025

Source: CH2 Part 1

<sup>2</sup> Refer to Technical Notes - point 11.

## Monthly Inpatient Waiting Lists

The Department also collects monthly data on the size of the inpatient waiting list excluding private patients and non-NI residents. These figures are shown in Tables 5 and 6.

**Table 5 Monthly Inpatient Waiting Lists<sup>3</sup>**

Month Ending	Admission Method		Total Waiting	Excess Waiters	
	Ordinary	Day Case		Number	% of Total
September 2003	23,853	29,372	53,225	6,629	12.5%
October 2003	24,040	28,924	52,964	6,225	11.8%
November 2003	23,358	28,180	51,538	5,733	11.1%
December 2003	23,562	28,203	51,765	5,379	10.4%
January 2004	23,008	28,341	51,349	4,733	9.2%
February 2004	22,404	28,053	50,457	4,290	8.5%
March 2004	21,965	27,069	49,034	3,597	7.3%
April 2004	22,143	27,965	50,108	3,490	7.0%
May 2004	21,873	28,120	49,993	3,451	6.9%
June 2004	21,621	28,383	50,004	3,197	6.4%
July 2004	21,737	28,883	50,620	3,266	6.5%
August 2004	21,422	28,873	50,295	3,163	6.3%
September 2004	20,942	28,877	49,819	3,084	6.2%

Source: CHA

<sup>3</sup> Refer to Technical Notes – point 13.

The monthly waiting list figures have shown an overall decrease in the 3-month period since June 2004.

Patients resident in a Health Board Area may receive treatment in any of the four Health Boards. Table 6 shows the number of residents in each Health Board Area waiting for admission to hospitals in their own and other Health Board Areas.

**Table 6 Monthly Inpatient Waiting Lists by Board of Residence and Board of Treatment – September 2004**

Board of Residence	Board of Treatment			
	EHSSB	NHSSB	SHSSB	WHSSB
Eastern	18,977	89	122	0
Northern	5,947	5,984	450	577
Southern	3,615	12	7,538	92
Western	1,082	36	59	5,239
<b>Northern Ireland</b>	<b>29,621</b>	<b>6,121</b>	<b>8,169</b>	<b>5,908</b>

Source: CHA

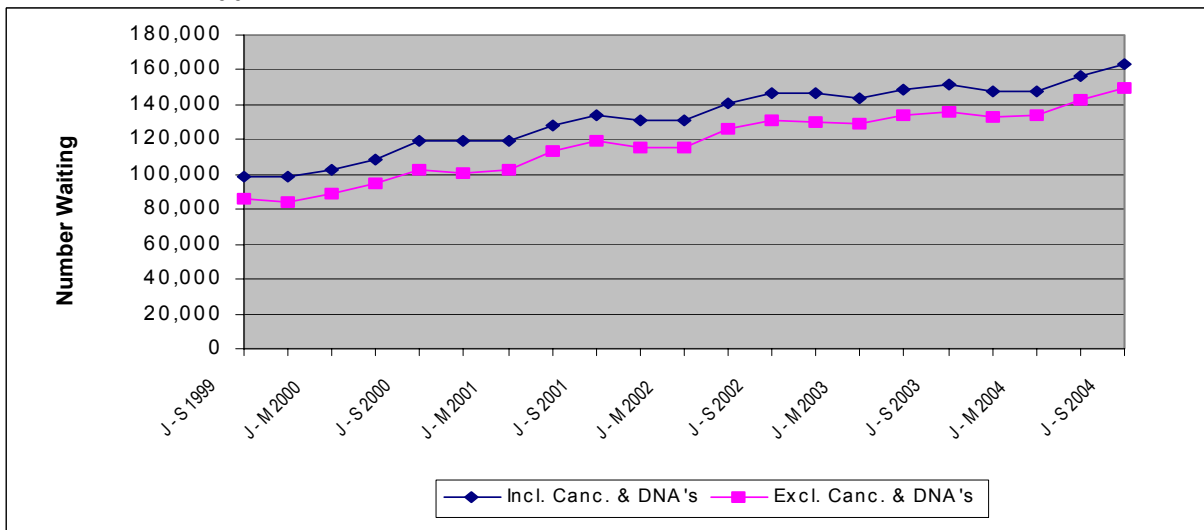
# Outpatients

## Headline Totals

The number of patients waiting for admission as outpatients (including cancellations and deferrals) at the end of September 2004 stood at 163,809 representing an increase of 6,854 (4.4%) over the quarter and an increase of 12,057 (7.9%) compared with the same quarter in the previous year. Corresponding quarterly and annual changes (excluding cancellations and deferrals) were +5.2% and +9.9% respectively. Figure 4 shows five yearly trends in the number of outpatients waiting for a first appointment, Figure 5 shows the same trends information for excess waiters (excess waiters are defined as patients waiting more than 3 months for a first outpatient appointment).

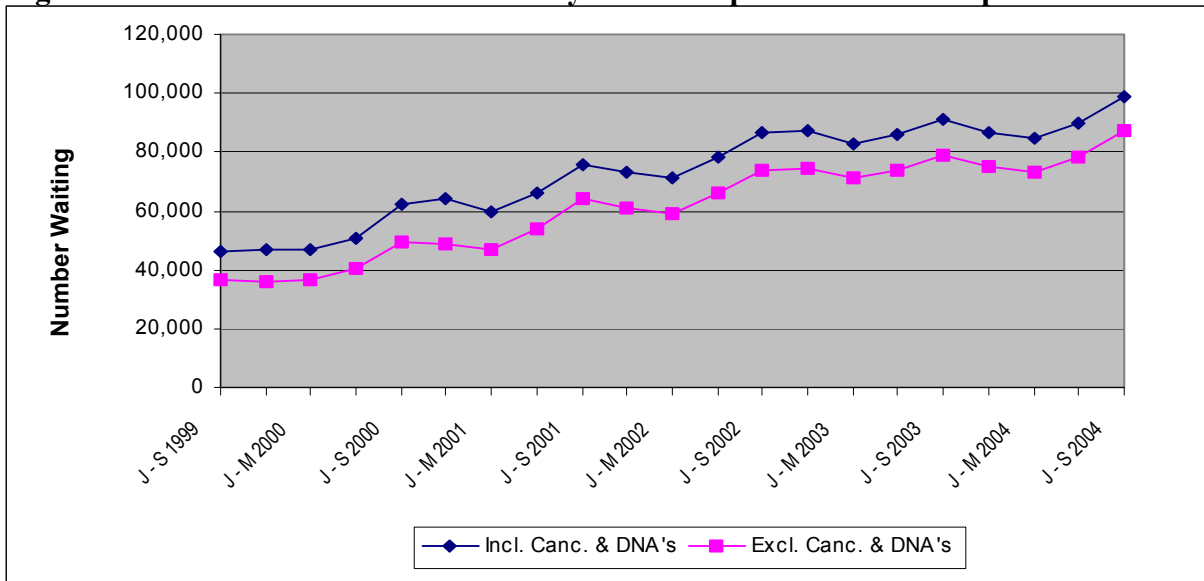
<sup>4</sup> Refer to Technical Notes – points 15 to 19.

**Figure 4 Outpatients Waiting for a First Appointment (including and excluding cancellations and deferrals) – Five Yearly Trends September 1999 – September 2004<sup>4</sup>**



Source: CH3 Parts 1&2.

**Figure 5 Excess Waiters<sup>5</sup> Five Yearly Trends September 1999 – September 2004<sup>4</sup>**



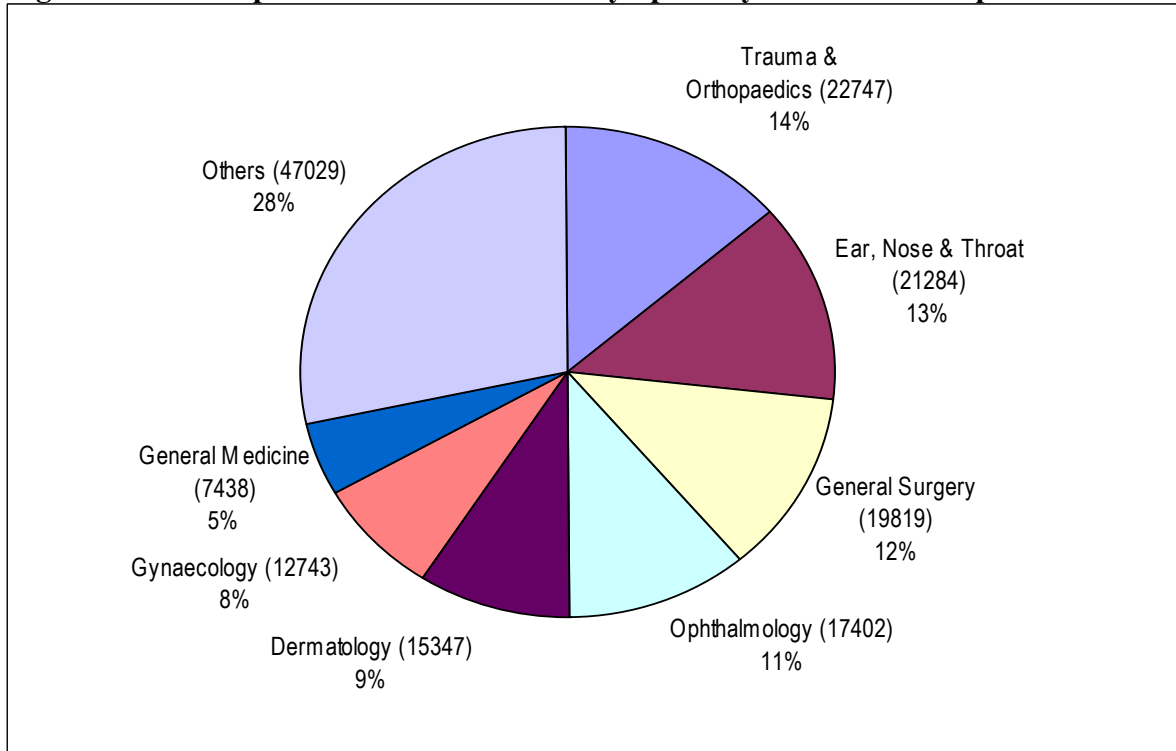
Source: CH3 Parts 1 & 2

<sup>5</sup> Refer to Technical Notes – Point 20.

## Outpatients Waiting by Specialty

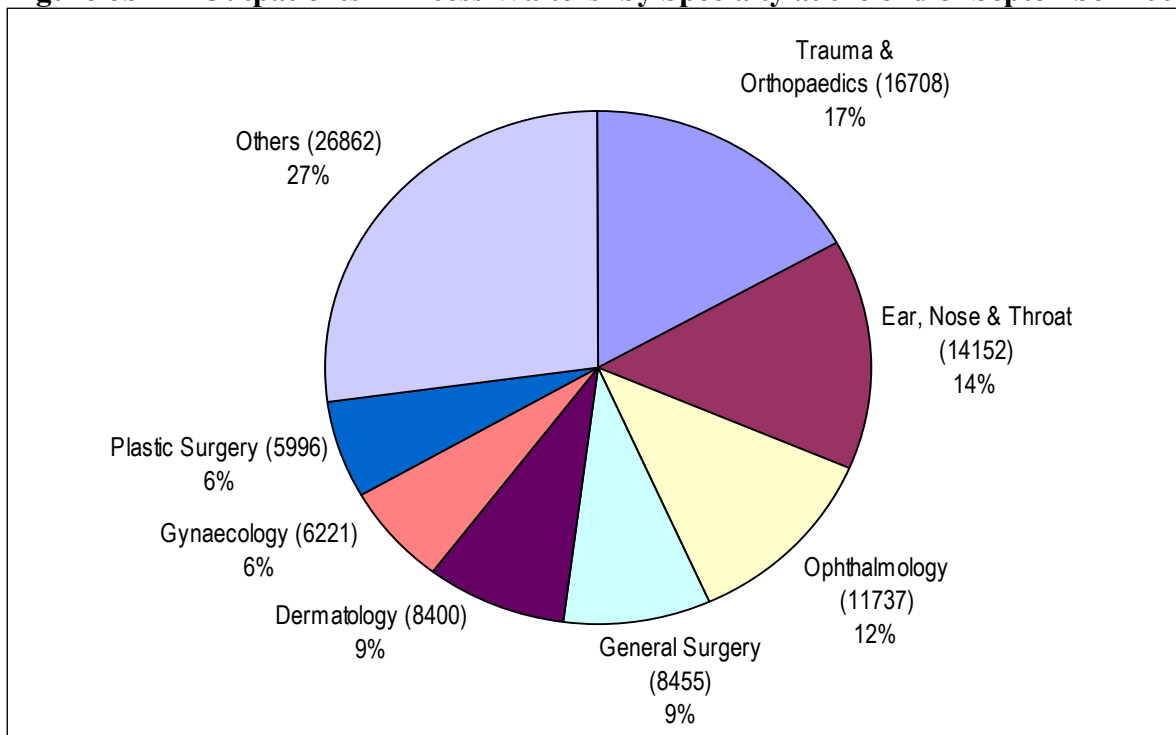
The majority of those waiting (72%) were within seven specialties: Trauma and Orthopaedic Surgery (T&O); Ear, Nose and Throat (ENT); General Surgery; Ophthalmology; Dermatology, Gynaecology (Gynae) and General Medicine (Figure 6a). Corresponding figures for excess waiters are shown in Figure 6b. All figures include those who are waiting for their first appointment including those who have cancelled or missed a previous appointment during the September 2004 quarter.

**Figure 6a Outpatients – Total Waiters by Specialty at the end of September 2004**



Source: CH3.

**Figure 6b Outpatients – Excess Waiters<sup>5</sup> by Specialty at the end of September 2004**



Source: CH3.

<sup>5</sup> Refer to Technical Notes – Point 20.

## Outpatient Waiting Time by Specialty

Waiting times for outpatients by specialty are shown in Tables 7a and 7b. The proportion of those waiting less than 12 months ranged from 100% in Cardiac Surgery to 26.7% in Plastic Surgery. Overall four fifths (80.6%) of those waiting for treatment were waiting less than 12 months.

**Table 7a Number of Patients Waiting for a First Appointment by Months Waiting and Specialty – September 2004**

Specialty	Patients Waiting for an Appointment by Months Waiting					Total Number of Patients Awaiting Appointment
	0 - 2	3 - 11	12 - 17	18 - 23	24 +	
Trauma & Orthopaedics	6,039	8,613	2,615	1,776	3,704	22,747
Ear, Nose & Throat	7,132	9,970	2,594	976	612	21,284
General Surgery	11,364	7,213	839	359	44	19,819
Ophthalmology	5,665	8,586	1,950	657	544	17,402
Dermatology	6,947	6,344	911	459	686	15,347
Gynaecology	6,522	5,694	395	97	35	12,743
General Medicine	3,978	2,795	435	176	54	7,438
Plastic Surgery	789	1,027	457	378	4,134	6,785
Cardiology	2,418	2,165	140	121	218	5,062
Urology	1,422	1,977	546	359	354	4,658
Rheumatology	1,249	2,149	494	266	62	4,220
Neurology	1,510	1,974	324	56	40	3,904
Paediatrics	1,646	1,230	119	79	464	3,538
Mental Illness	2,031	814	46	22	47	2,960
Oral Surgery	660	1,007	303	246	522	2,738
Pain Management	604	1,022	265	158	277	2,326
Gastroenterology	771	426	13	3	0	1,213
Child & Adolescent Psychiatry	435	580	85	32	52	1,184
Geriatric Medicine	691	362	12	2	1	1,068
Paediatric Surgery	410	387	84	38	147	1,066
Resorative Dentistry	201	290	129	74	340	1,034
Nephrology	410	242	22	20	52	746
Orthodontics	339	322	11	5	12	689
Thoracic Medicine	340	298	10	5	0	653
Endocrinology	399	237	8	1	0	645
Neurosurgery	171	235	58	9	4	477
Audiological Medicine	127	94	11	12	62	306
Old Age Psychiatry	147	157	1	0	0	305
Haematology (Clinical)	186	26	7	0	0	219
Paediatric Dentistry	43	17	9	8	102	179
Clinical Oncology	113	22	2	0	0	137
Anaesthetics	65	69	1	0	1	136
Cardiac Surgery	101	32	0	0	0	133
Paediatric Neurology	30	29	3	7	30	99
Chemical Pathology	44	49	4	0	0	97
Other	279	152	11	4	6	452
<b>All Specialties</b>	<b>65,278</b>	<b>66,606</b>	<b>12,914</b>	<b>6,405</b>	<b>12,606</b>	<b>163,809</b>

Source: CH3

**Table 7b Percentage of Patients Waiting for a First Appointment by Months Waiting and Specialty – September 2004**

Specialty	Patients Waiting for an Appointment by Months				
	0 - 2	3 - 11	12 - 17	18 - 23	24+
Trauma & Orthopaedics	26.5%	37.9%	11.5%	7.8%	16.3%
Ear, Nose & Throat	33.5%	46.8%	12.2%	4.6%	2.9%
General Surgery	57.3%	36.4%	4.2%	1.8%	0.2%
Ophthalmology	32.6%	49.3%	11.2%	3.8%	3.1%
Dermatology	45.3%	41.3%	5.9%	3.0%	4.5%
Gynaecology	51.2%	44.7%	3.1%	0.8%	0.3%
General Medicine	53.5%	37.6%	5.8%	2.4%	0.7%
Plastic Surgery	11.6%	15.1%	6.7%	5.6%	60.9%
Cardiology	47.8%	42.8%	2.8%	2.4%	4.3%
Urology	30.5%	42.4%	11.7%	7.7%	7.6%
Rheumatology	29.6%	50.9%	11.7%	6.3%	1.5%
Neurology	38.7%	50.6%	8.3%	1.4%	1.0%
Paediatrics	46.5%	34.8%	3.4%	2.2%	13.1%
Mental Illness	68.6%	27.5%	1.6%	0.7%	1.6%
Oral Surgery	24.1%	36.8%	11.1%	9.0%	19.1%
Pain Management	26.0%	43.9%	11.4%	6.8%	11.9%
Gastroenterology	63.6%	35.1%	1.1%	0.2%	0.0%
Child & Adolescent Psychiatry	36.7%	49.0%	7.2%	2.7%	4.4%
Geriatric Medicine	64.7%	33.9%	1.1%	0.2%	0.1%
Paediatric Surgery	38.5%	36.3%	7.9%	3.6%	13.8%
Resorative Dentistry	19.4%	28.0%	12.5%	7.2%	32.9%
Nephrology	55.0%	32.4%	2.9%	2.7%	7.0%
Orthodontics	49.2%	46.7%	1.6%	0.7%	1.7%
Thoracic Medicine	52.1%	45.6%	1.5%	0.8%	0.0%
Endocrinology	61.9%	36.7%	1.2%	0.2%	0.0%
Neurosurgery	35.8%	49.3%	12.2%	1.9%	0.8%
Audiological Medicine	41.5%	30.7%	3.6%	3.9%	20.3%
Old Age Psychiatry	48.2%	51.5%	0.3%	0.0%	0.0%
Haematology (Clinical)	84.9%	11.9%	3.2%	0.0%	0.0%
Paediatric Dentistry	24.0%	9.5%	5.0%	4.5%	57.0%
Clinical Oncology	82.5%	16.1%	1.5%	0.0%	0.0%
Anaesthetics	47.8%	50.7%	0.7%	0.0%	0.7%
Cardiac Surgery	75.9%	24.1%	0.0%	0.0%	0.0%
Paediatric Neurology	30.3%	29.3%	3.0%	7.1%	30.3%
Chemical Pathology	45.4%	50.5%	4.1%	0.0%	0.0%
Other	61.7%	33.6%	2.4%	0.9%	1.3%
<b>All Specialties</b>	<b>39.9%</b>	<b>40.7%</b>	<b>7.9%</b>	<b>3.9%</b>	<b>7.7%</b>

Source: CH3

## Outpatient Completed Waits

Waiting times for completed outpatient waits are shown in Table 8. During the September 2004 quarter a total of 84,462 outpatients attended their first appointment without having cancelled or missed a previous appointment. 70.6% of patients attended their first outpatient appointment within 3 months of being placed on the waiting list and 96.4% had their first outpatient appointment within 12 months.

**Table 8 Completed Outpatient Waits for First Appointment<sup>6</sup>**

Quarter	Time Waiting in Months					Total
	0 - 2	3 - 11	12 - 17	18 - 23	24+	
J - M 2001	75.6%	22.5%	1.3%	0.4%	0.2%	86,024
A - J 2001	77.2%	21.0%	1.2%	0.4%	0.2%	82,161
J - S 2001	74.4%	23.7%	1.2%	0.5%	0.3%	77,880
O - D 2001	72.4%	24.7%	1.8%	0.7%	0.3%	88,331
<b>J - D 2001</b>	<b>74.9%</b>	<b>23.0%</b>	<b>1.4%</b>	<b>0.5%</b>	<b>0.3%</b>	<b>334,396</b>
J - M 2002	72.4%	25.3%	1.4%	0.6%	0.3%	85,856
A - J 2002	74.9%	22.7%	1.4%	0.5%	0.4%	82,282
J - S 2002	71.0%	26.3%	1.8%	0.4%	0.4%	79,986
O - D 2002	70.2%	26.6%	2.0%	0.6%	0.6%	88,056
<b>J - D 2002</b>	<b>72.1%</b>	<b>25.2%</b>	<b>1.7%</b>	<b>0.5%</b>	<b>0.4%</b>	<b>336,180</b>
J - M 2003	70.0%	25.6%	2.4%	0.9%	1.2%	85,054
A - J 2003	72.1%	24.4%	2.2%	0.7%	0.7%	84,963
J - S 2003	69.5%	26.6%	2.2%	0.8%	0.9%	80,128
O - D 2003	69.6%	26.1%	2.5%	0.9%	0.9%	88,711
<b>J - D 2003</b>	<b>70.3%</b>	<b>25.7%</b>	<b>2.3%</b>	<b>0.8%</b>	<b>0.9%</b>	<b>338,856</b>
J - M 2004	69.8%	25.2%	3.0%	1.0%	1.1%	91,496
A - J 2004	71.8%	24.1%	2.6%	0.9%	0.6%	88,192
J - S 2004	70.6%	25.8%	2.2%	0.8%	0.6%	84,462

Source: CH4 Part 1

<sup>6</sup> Refer to Technical Notes – point 21.

## Technical Notes

1. Unless otherwise stated hospitals and patients mentioned in this release refer only to HPSS hospitals and patients.
2. The sources for the data contained in this release are the Charter Monitoring Returns CH1, CH2, CH3 and CH4. These returns collect information from Hospital Trusts on a quarterly basis. The CHA return collects information from Health Boards on a monthly basis.
3. There is a fundamental difference in coverage between Board based and Trust based information. Board based (CHA) returns exclude all patients living outside Northern Ireland and all privately funded patients waiting for treatment in Health Service hospitals.
4. Apart from Tables 5 and 6, figures include all privately funded patients waiting for treatment in Health Service hospitals and those patients who are resident outside Northern Ireland.
5. In Northern Ireland, inpatient excess waiters are defined as those having to wait 12 months or more for admission to the Cardiac Surgery specialty and those having to wait 18 months or more to other specialties.
6. Ordinary admissions include both (a) patients admitted electively with the expectation that they will remain in hospital for at least one night, and (b) non-elective admissions (e.g. emergency admissions). A patient who is admitted with either of the above intentions, but who leaves hospital for any reason without staying overnight, is still counted as an ordinary admission. Day cases are not included.
7. Day Cases are patients admitted electively during the course of a day with the intention of receiving care who do not require the use of a hospital bed overnight and who return home as scheduled. If this original intention is not fulfilled and the patient stays overnight, such a patient is counted as an ordinary admission.
8. The inpatient figures presented include people waiting to be admitted as inpatients either as day cases or ordinary admissions. They do not include:
  - Patients admitted as emergency cases;
  - Outpatients;
  - Patients undergoing a planned programme of treatment e.g. a series of admissions for chemotherapy;
  - Maternity (specialties 510 and 520);
  - Patients already in hospitals but included on other waiting lists;
  - Patients who are temporarily suspended from waiting lists.
9. Outpatient waiting list figures presented do not include maternity specialties 510 and 520.
10. Waiting time begins from the date the clinician decided to admit the patient. Patients subsequently offered a date but unable to attend have their waiting times calculated from the most recent date offered. These are known as self-deferred cases and are included in the total waiting.
11. Completed inpatient wait figures for quarters ending June 2002 to March 2004 have been revised to reflect amendments from Green Park Healthcare HSS Trust.

12. The source for the monthly waiting list figures is the monthly CHA return. The monthly figures presented here are produced from an ad-hoc reporting system which does not go through the more stringent validation processes which produce the quarterly figures. For this reason and the fact that the two sets of figures are run-off at different points in time mean that there may be anomalies when comparing the monthly figures with the quarterly figures.
13. Monthly waiting list figures for all months between September 2003 and May 2004 have been revised to reflect amendments.
14. Health Board residents included in Table 6 are not always assigned a Health Board of treatment as some patients may be waiting for admission to a hospital outside Northern Ireland.
15. Green Park Healthcare HSS Trust now provide outpatient waiting list figures in the Pain Management specialty. Estimated totals were provided for quarters ending June, September and December 2002 and March 2003 and estimates for each time band have been calculated. These estimates have been included in the outpatient figures shown in Figures 4 and 5.
16. Down Lisburn HSS Trust, Foyle Community HSS Trust, Sperrin Lakeland HSS Trust and Ulster Community & Hospitals HSS Trust now provide outpatient waiting list figures in the Child and Adolescent Psychiatry specialty. These figures have been included in the outpatient waiting list figures shown in Figures 4 and 5.
17. Sperrin Lakeland HSS Trust now provide outpatient waiting list figures in the Mental Illness and Forensic Psychiatry specialties. These figures have been included in the outpatient waiting list figures shown in Figures 4 and 5.
18. North and West Belfast HSS Trust now provide outpatient waiting list figures in the Mental Handicap specialty. These figures have been included in the outpatient waiting list figures shown in Figures 4 and 5.
19. The Royal Group of Hospitals HSS Trust now provide outpatient waiting list figures in the Child and Adolescent Psychiatry specialty. An estimated total was supplied for the quarter ending September 2004, and estimates for each time band have been calculated. These estimates have been included in the outpatient figures shown in Figures 4 and 5.
20. For outpatients, excess waiters are defined as those having to wait more than 3 months for a first outpatient appointment.
21. Due to reasons beyond the control of the Trust, United Hospitals HSS Trust has been unable to produce CH4 data for all quarters between December 2001 and September 2004. This Trust has provided estimated totals for these quarters and estimates for each time band have been calculated. These new estimates for the missing data for the United Group of Hospitals have been included in the data shown in Table 8. When CH4 data becomes available these estimates will be recast.
22. Department of Health, Social Services and Public Safety policy is to publish revised figures with subsequent statistical releases unless it is decided that the magnitude of the change merits earlier notification.

23. Figures relating to the quarter ending December 2004 will be released on Thursday, 3<sup>rd</sup> March 2005.
24. For general enquiries about National Statistics, contact the National Statistics Public Service on
- 020 7533 5888**

minicom: 01633 812399  
E-mail: [info@statistics.gov.uk](mailto:info@statistics.gov.uk)  
Fax: 01633 652747  
Letters: room DG/18, Drummond Gate,  
LONDON SW1V 2QQ

You can also find National Statistics on the internet – Go to [\*\*www.statistics.gov.uk\*\*](http://www.statistics.gov.uk).

### **Additional Information**

Further information on waiting lists in Northern Ireland is available from:

Office Information Manager  
Regional Information Branch  
Department of Health, Social Services and Public Safety  
Annexe 2  
Castle Buildings  
Stormont  
BT4 3UD

Internet address: [www.dhsspsni.gov.uk/stats&research/order.asp#waiting](http://www.dhsspsni.gov.uk/stats&research/order.asp#waiting)