

Statistics Release



Department of
**Health, Social Services
and Public Safety**

An Roinn

**Sláinte, Seirbhísí Sóisialta
agus Sábháilteachta Poiblí**

www.dhsspsni.gov.uk

1st December 2005

Northern Ireland Waiting Lists – September 2005

This statistics release gives details of the number of people waiting for inpatient or outpatient treatment at hospitals in Northern Ireland at the end of September 2005, the most recent quarter for which figures are available.

Inpatients

Headline Totals – Table 1

The total number of patients waiting to be admitted to hospitals in Northern Ireland at the end of September 2005 stood at 46,944.

Over the quarter, comparing the end of September 2005 with the end of June 2005 (47,421), the total number waiting has decreased by 477 (-1.0%).

Over the year, comparing the end of September 2005 with the end of September 2004 (50,651), the total number waiting decreased by 3,707 (-7.3%).

Table 1: Quarterly Waiting Lists – September 2005

Waiting for:	Quarter Ending September 2005	Change compared with end of previous quarter	Change compared with end of same quarter – previous year
Ordinary Admissions	17,948	-906	-3,428
Day case Admissions	28,996	+ 429	-279
Total Waiting	46,944	-477	-3,707

Source: CHI

Detailed notes and definitions are provided in the Technical Notes.



A National Statistics Publication

National Statistics are produced to high professional standards set out in the National Statistics Code of Practice. They undergo regular quality assurance reviews to ensure that they meet customer needs. They are produced free from any political interference.

Numbers Waiting for Ordinary Admission and Day Case Treatment

People on the inpatient waiting list in Northern Ireland can be waiting for admission to hospital as day cases or as ordinary admissions.

Of the 46,944 people waiting for admission to hospital at the end of September 2005, 17,948 (38.2%) were waiting for ordinary admission and 28,996 (61.8%) were waiting for day case admission (Table 1).

Since the end of June 2005, the number of cases waiting for ordinary admission has decreased by 906 (-4.8%) and the number waiting for day case admission has increased by 429 (1.5%).

In comparison with September 2004, the number of cases waiting for ordinary admission has decreased by 3,428 (-16.0%) and the number waiting for day case admission has decreased by 279 (-1.0%).

Waiting Times for Ordinary Admission and Day case Treatment¹ – Tables 2a & 2b

At the end of September 2005, the number of patients waiting 12 months and over was 2,434 or 5.2% of the total waiting. Of those, the number waiting 18 months and over at the end of September 2005 stood at 627 or 1.3% of the total waiting.

Over the quarter, comparing the end of September 2005 with the end of June 2005, the number of people waiting 12 months and over decreased by 1,533 (-38.6%). The number of patients waiting 18 months and over decreased by 249 (-28.4%) over the same period.

Over the year, comparing the end of September 2005 with the end of September 2004, the number of people waiting 12 months and over decreased by 3,934 (-61.8%). Over the same period the number of people waiting 18 months and over decreased by 2,445 (-79.6%).

Table 2a Patients Waiting 12 Months and Over¹ – September 2005

Waiting for:	Quarter Ending September 2005	Change compared with end of previous quarter	Change compared with end of same quarter - previous year
Ordinary admissions	1,548	-1,025	-2,848
Day case admissions	886	-508	-1,086
Total Waiting	2,434	-1,533	-3,934

Source: CH1

¹ Refer to Technical Notes – point 3.

Table 2b Patients Waiting 18 Months and Over¹ – September 2005

Waiting for:	Quarter Ending September 05	Change compared with end of previous quarter	Change compared with end of same quarter - previous year
Ordinary admissions	538	-212	-1,863
Day case admissions	89	-37	-582
Total Waiting	627	-249	-2,445

Source: CH1

¹ Refer to Technical Notes – point 3.

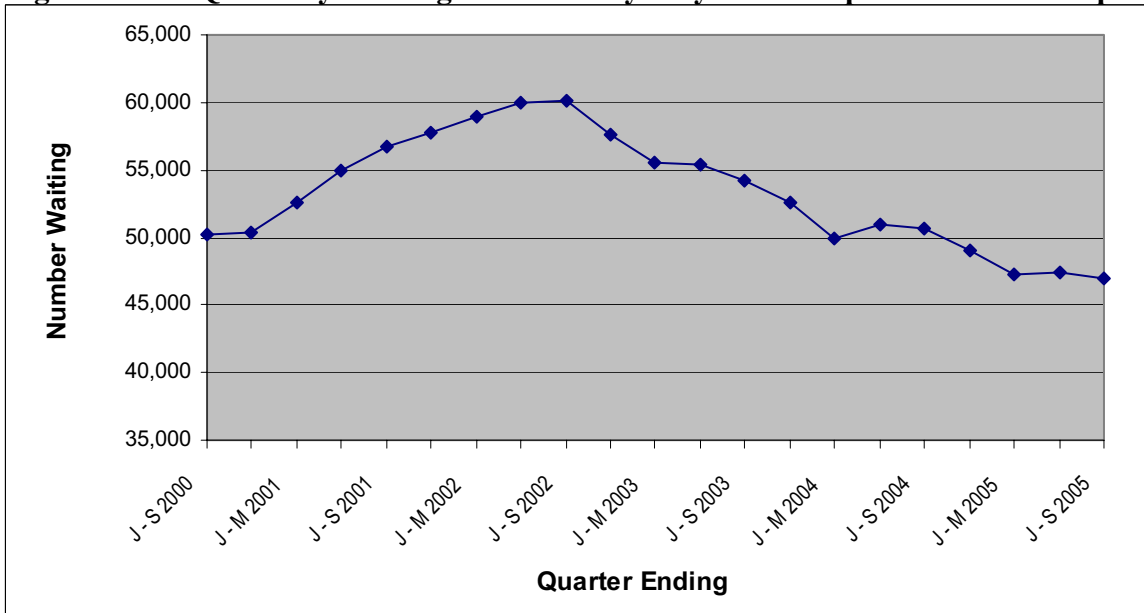
Peak Figures

The end of September 2005 total of 46,944 on the inpatient waiting list represents a decrease of 13,246 (-22.0%) on the peak waiting list figure of 60,190 (end September 2002).

Trends

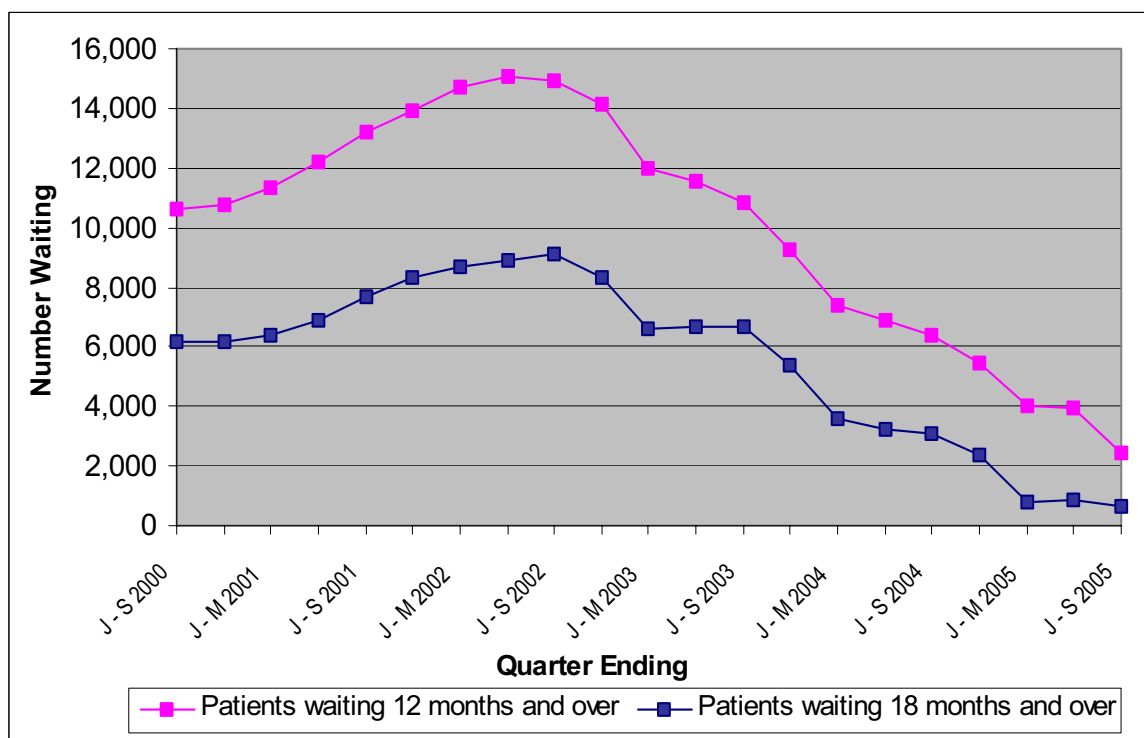
The total number of people waiting was on a generally upward trend from September 2000, and rose to peak in September 2002. There has been an overall downward trend since this peak. The total number of people waiting increased slightly during the quarter ending June 2005, but has decreased in the quarter ending September 2005 (Figure 1). Patients waiting over 12 months have been generally on a downward trend since September 2002 as have patients waiting over 18 months (Figure 2).

Figure 1 Quarterly Waiting Lists – Five yearly trends September 2000 – September 2005



Source: CHI

Figure 2 Quarterly Waiting Times¹ - Five yearly trends September 2000 – September 2005



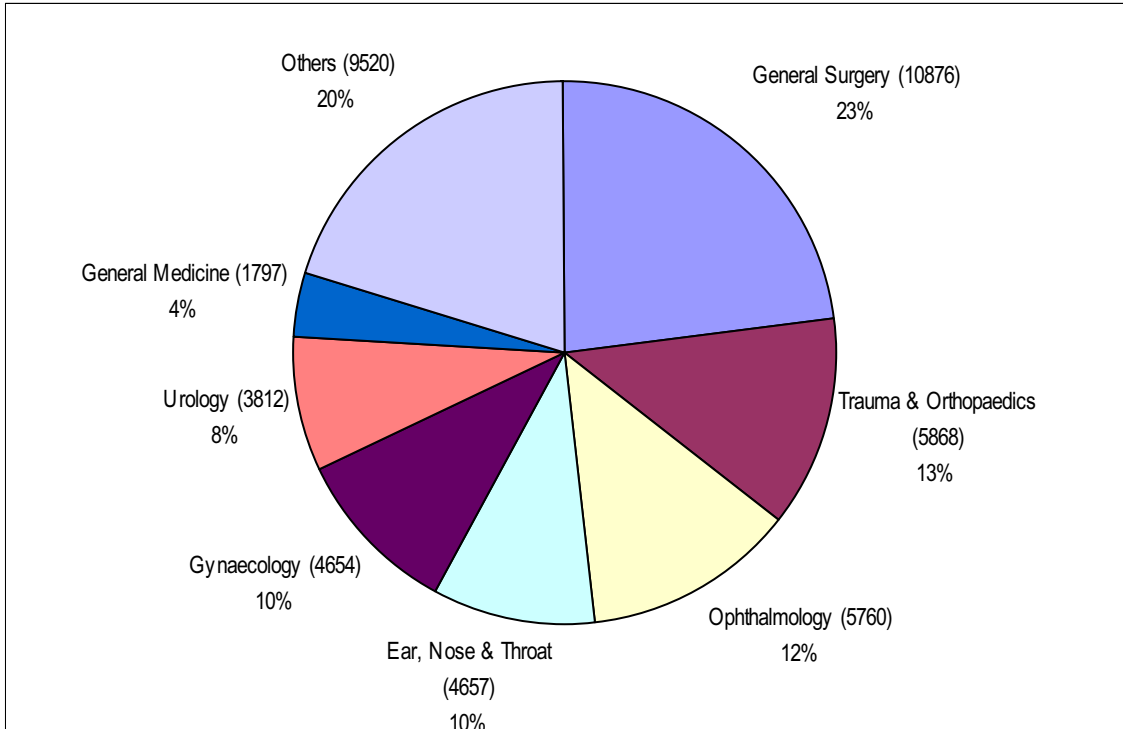
Source: CHI

¹ Refer to Technical Notes – point 3.

Inpatients Waiting by Specialty

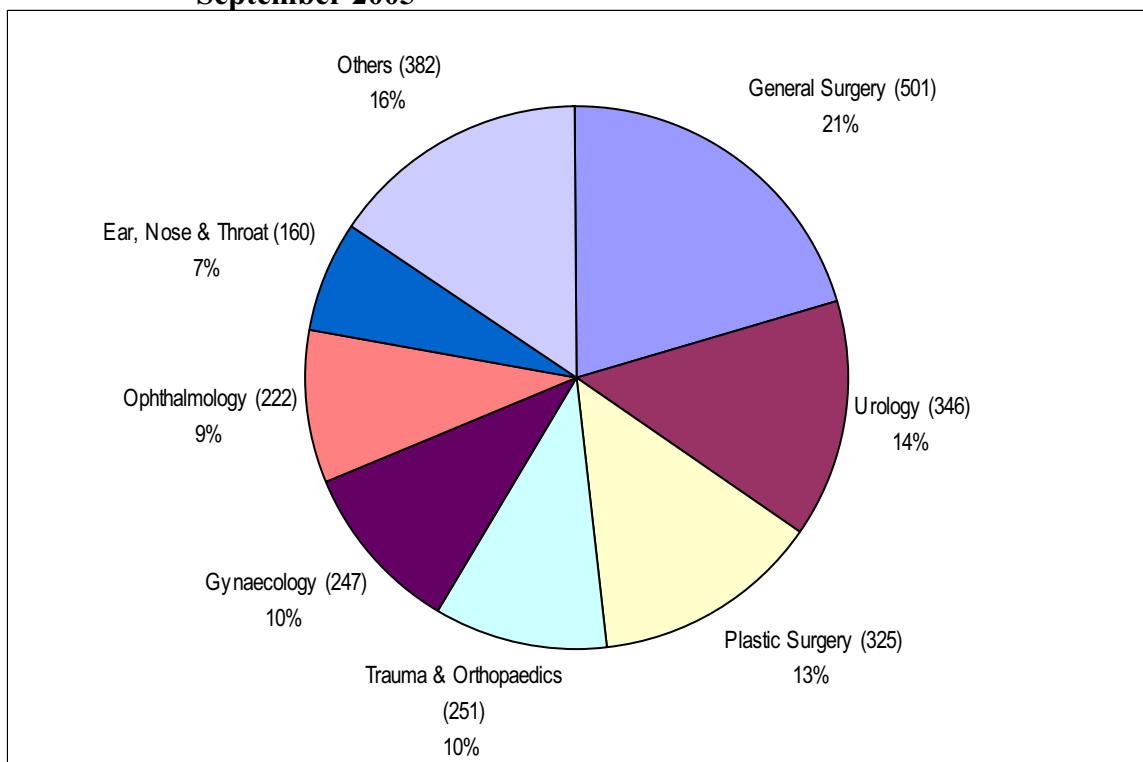
The overwhelming majority of those waiting (80%) were within seven specialties: General Surgery; Trauma and Orthopaedic Surgery (T&O); Ophthalmology; Ear, Nose and Throat (ENT); Gynaecology (Gynae); Urology and General Medicine (Figure 3a). Figures for patients waiting 12 months and over are shown in Figure 3b. Figures for patients waiting 18 months and over are shown in Figure 3c.

Figure 3a Inpatients - Total Waiters by Specialty at the end of September 2005



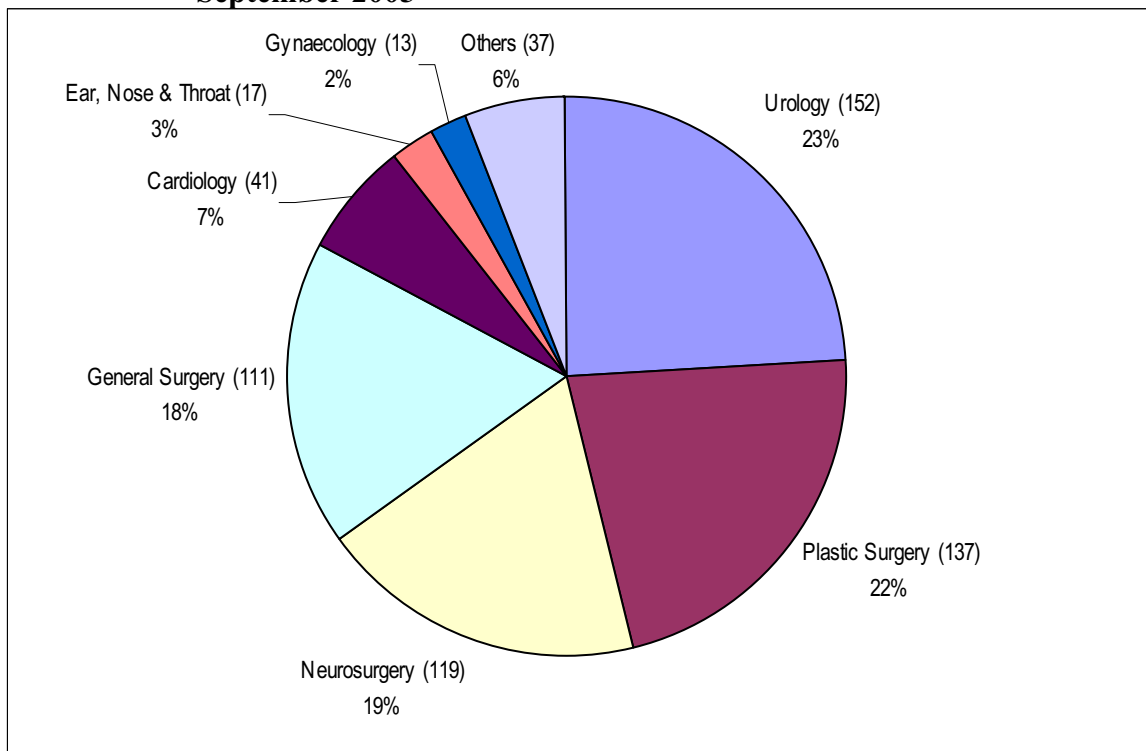
Source: CHI

Figure 3b Inpatients – Patients waiting 12 months and over¹ by Specialty at the end of September 2005



Source: CHI

Figure 3c Inpatients – Patients waiting 18 months and over¹ by Specialty at the end of September 2005



Source: CH1

¹ Refer to Technical Notes – point 3.

Inpatient Waiting Time by Specialty

Waiting times for inpatients by specialty are shown in Tables 3a and 3b. The proportion of those waiting less than 12 months ranged from 100% in a number of Specialities including Rheumatology to 53.4% in Neurosurgery. Overall 94.8% of those waiting for admission were waiting less than 12 months. More than 99% of patients were waiting for treatment in the Acute Services Programme of Care.

Table 3a Number of Patients Waiting for Admission by Months Waiting and Specialty – September 2005

Specialty	Patients Waiting for Admission by Months Waiting										Total Number of Patients Awaiting Admission
	0 - 2	3 - 5	6 - 8	9 - 11	12 - 14	15 - 17	18 - 20	21 - 23	24 +		
General Surgery	6,027	2,433	1,223	692	313	77	75	22	14	10,876	
Trauma & Orthopaedics	1,696	1,871	1,415	635	218	21	4	5	3	5,868	
Ophthalmology	2,550	1,806	821	361	158	53	8	0	3	5,760	
Ear, Nose & Throat	1,933	1,465	755	344	117	26	10	0	7	4,657	
Gynaecology	2,490	1,097	521	299	202	32	9	4	0	4,654	
Urology	1,911	797	436	322	145	49	36	36	80	3,812	
General Medicine	1,237	483	68	7	2	0	0	0	0	1,797	
Cardiology	840	390	235	140	29	18	17	8	16	1,693	
Gastroenterology	1,235	302	102	35	2	0	0	0	0	1,676	
Plastic Surgery	548	271	171	149	113	75	45	12	80	1,464	
Paediatric Surgery	169	244	152	110	67	23	5	0	2	772	
Pain Management	361	218	65	33	5	0	0	0	0	682	
Oral Surgery	277	171	84	47	4	6	2	0	0	591	
Rheumatology	440	120	6	0	0	0	0	0	0	566	
Dermatology	241	123	71	9	1	1	0	0	0	446	
Neurosurgery	77	55	18	15	13	12	8	17	94	309	
Cardiac Surgery	151	94	22	3	1	0	0	0	0	271	
Neurology	80	42	42	10	15	8	4	0	0	201	
Thoracic Surgery	99	24	6	6	1	0	1	0	0	137	
Nephrology	81	40	0	0	0	0	0	0	0	121	
Other	457	76	33	25	0	0	0	0	0	591	
All Specialities	22,900	12,122	6,246	3,242	1,406	401	224	104	299	46,944	

Table 3b Percentage of Patients Waiting for Admission by Months Waiting and Specialty – September 2005

Specialty	Patients Waiting for Admission by Months Waiting									
	0 - 2	3 - 5	6 - 8	9 - 11	12 - 14	15 - 17	18 - 20	21 - 23	24 +	
General Surgery	55.4%	22.4%	11.2%	6.4%	2.9%	0.7%	0.7%	0.2%	0.1%	
Trauma & Orthopaedics	28.9%	31.9%	24.1%	10.8%	3.7%	0.4%	0.1%	0.1%	0.1%	
Ophthalmology	44.3%	31.4%	14.3%	6.3%	2.7%	0.9%	0.1%	0.0%	0.1%	
Ear, Nose & Throat	41.5%	31.5%	16.2%	7.4%	2.5%	0.6%	0.2%	0.0%	0.2%	
Gynaecology	53.5%	23.6%	11.2%	6.4%	4.3%	0.7%	0.2%	0.1%	0.0%	
Urology	50.1%	20.9%	11.4%	8.4%	3.8%	1.3%	0.9%	0.9%	2.1%	
General Medicine	68.8%	26.9%	3.8%	0.4%	0.1%	0.0%	0.0%	0.0%	0.0%	
Cardiology	49.6%	23.0%	13.9%	8.3%	1.7%	1.1%	1.0%	0.5%	0.9%	
Gastroenterology	73.7%	18.0%	6.1%	2.1%	0.1%	0.0%	0.0%	0.0%	0.0%	
Plastic Surgery	37.4%	18.5%	11.7%	10.2%	7.7%	5.1%	3.1%	0.8%	5.5%	
Paediatric Surgery	21.9%	31.6%	19.7%	14.2%	8.7%	3.0%	0.6%	0.0%	0.3%	
Pain Management	52.9%	32.0%	9.5%	4.8%	0.7%	0.0%	0.0%	0.0%	0.0%	
Oral Surgery	46.9%	28.9%	14.2%	8.0%	0.7%	1.0%	0.3%	0.0%	0.0%	
Rheumatology	77.7%	21.2%	1.1%	0.0%	0.0%	0.0%	0.0%	0.0%	0.0%	
Dermatology	54.0%	27.6%	15.9%	2.0%	0.2%	0.2%	0.0%	0.0%	0.0%	
Neurosurgery	24.9%	17.8%	5.8%	4.9%	4.2%	3.9%	2.6%	5.5%	30.4%	
Cardiac Surgery	55.7%	34.7%	8.1%	1.1%	0.4%	0.0%	0.0%	0.0%	0.0%	
Neurology	39.8%	20.9%	20.9%	5.0%	7.5%	4.0%	2.0%	0.0%	0.0%	
Thoracic Surgery	72.3%	17.5%	4.4%	4.4%	0.7%	0.0%	0.7%	0.0%	0.0%	
Nephrology	66.9%	33.1%	0.0%	0.0%	0.0%	0.0%	0.0%	0.0%	0.0%	
Other	77.3%	12.9%	5.6%	4.2%	0.0%	0.0%	0.0%	0.0%	0.0%	
All Specialties	48.8%	25.8%	13.3%	6.9%	3.0%	0.9%	0.5%	0.2%	0.6%	

Source: CHI

Inpatient Completed Waits

Waiting times for completed inpatient waits are shown in Table 4. A total of 37,094 inpatients were admitted to hospital (excluding those who had previously refused an offer of admission) during the September 2005 quarter. 72.0% of patients received their treatment within 3 months of being placed on the waiting list and 94.1% received their treatment within 12 months.

Table 4 Completed Inpatient Waits

Quarter	Time Waiting in Months										Total
	0 - 2	3 - 5	6 - 8	9 - 11	12 - 14	15 - 17	18 - 20	21 - 23	24 +		
J - M 2002	74.9%	11.9%	4.7%	3.1%	2.3%	1.3%	0.7%	0.4%	0.8%		38,042
A - J 2002	74.4%	12.1%	5.3%	2.9%	2.1%	1.2%	0.6%	0.4%	0.9%		36,907
J - S 2002	72.6%	13.6%	5.2%	3.3%	1.9%	1.4%	0.8%	0.4%	0.8%		33,861
O - D 2002	73.6%	11.1%	5.8%	3.6%	2.3%	1.3%	0.8%	0.4%	1.0%		38,591
J - D 2002	73.9%	12.1%	5.3%	3.3%	2.1%	1.3%	0.7%	0.4%	0.9%		147,401
J - M 2003	73.6%	12.0%	4.6%	3.1%	2.2%	1.7%	0.9%	0.5%	1.3%		38,987
A - J 2003	73.9%	12.5%	5.2%	3.1%	2.0%	1.2%	0.7%	0.4%	1.0%		38,512
J - S 2003	71.9%	14.1%	5.2%	3.5%	1.7%	1.2%	0.7%	0.4%	1.1%		35,605
O - D 2003	72.7%	12.3%	5.4%	3.7%	2.0%	1.2%	0.9%	0.5%	1.5%		38,906
J - D 2003	73.0%	12.7%	5.1%	3.3%	2.0%	1.3%	0.8%	0.5%	1.2%		152,010
J - M 2004	74.4%	11.6%	4.8%	3.5%	1.9%	1.3%	0.6%	0.5%	1.3%		40,924
A - J 2004	74.6%	11.4%	5.9%	3.1%	1.9%	1.2%	0.6%	0.3%	0.9%		38,507
J - S 2004	73.1%	13.1%	5.4%	3.7%	1.9%	1.1%	0.7%	0.3%	0.7%		37,166
O - D 2004	73.4%	12.3%	5.5%	3.7%	2.3%	1.1%	0.7%	0.4%	0.7%		41,330
J - D 2004	73.9%	12.1%	5.4%	3.5%	2.0%	1.2%	0.6%	0.4%	0.9%		157,927
J - M 2005	72.9%	12.9%	4.8%	3.9%	1.9%	1.6%	0.8%	0.5%	0.7%		39,248
A - J 2005	74.1%	12.5%	6.2%	3.1%	2.0%	1.3%	0.5%	0.1%	0.3%		41,183
J - S 2005	72.0%	12.9%	5.4%	3.8%	2.4%	1.8%	0.9%	0.3%	0.3%		37,094

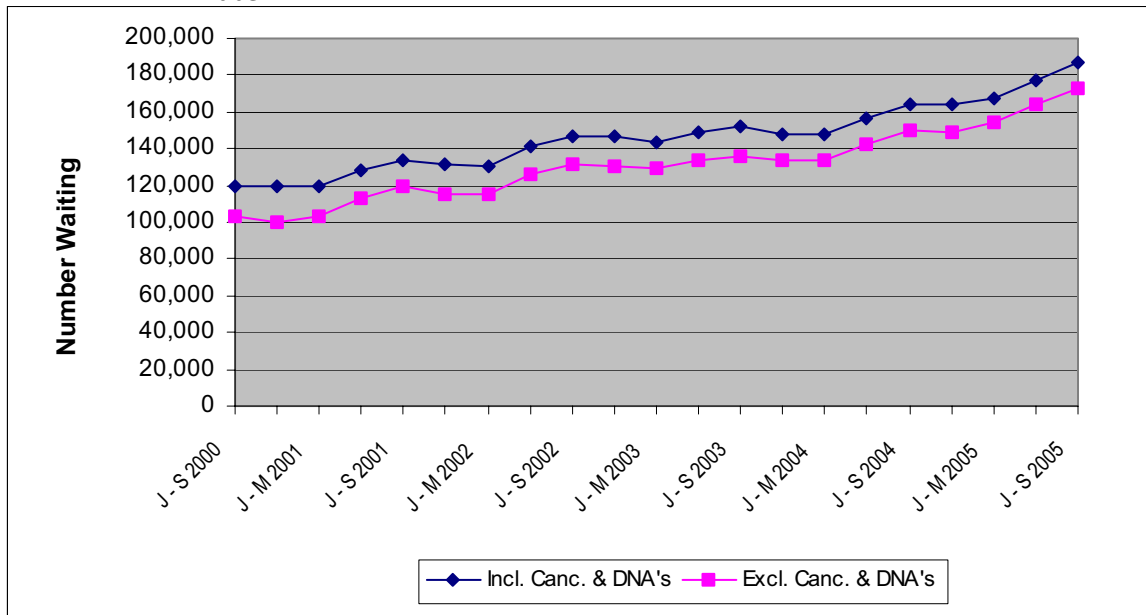
Source: CH2 Part 1

Outpatients

Headline Totals

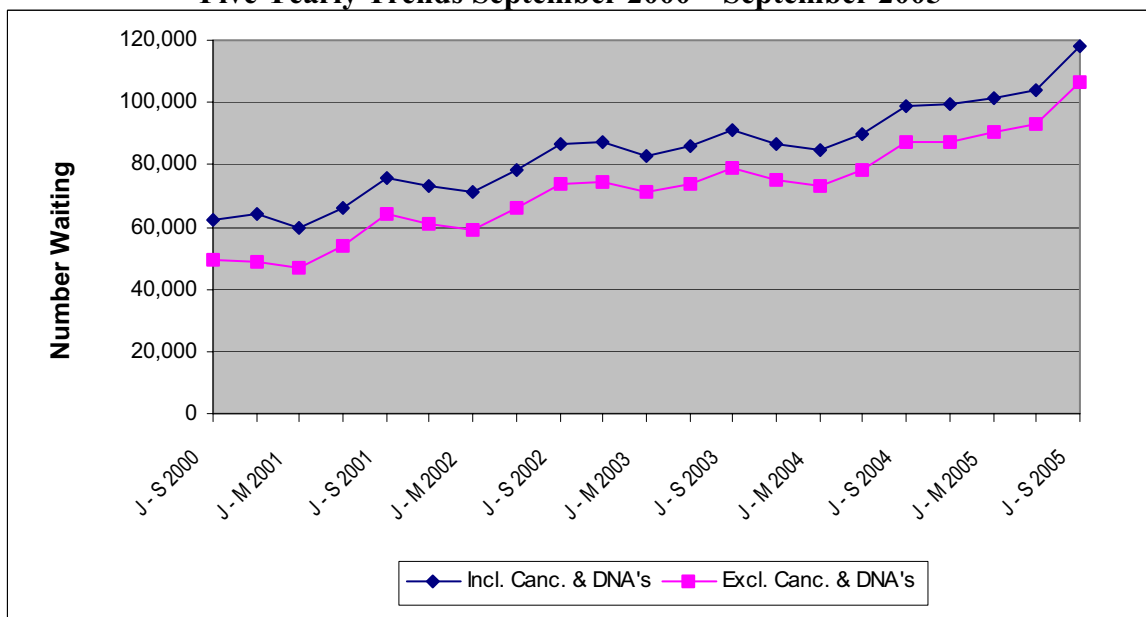
The number of patients waiting for admission as outpatients (including cancellations and deferrals) at the end of September 2005 stood at 187,025 representing an increase of 9,485 (5.3%) over the quarter and an increase of 23,303 (14.2%) compared with the same quarter in the previous year. Corresponding quarterly and annual changes (excluding cancellations and deferrals) were +5.6% and +15.2% respectively. Figure 4 shows five yearly trends in the number of outpatients waiting for a first appointment. Figure 5 shows the same trends information for patients waiting 3 months and over for a first outpatient appointment.

Figure 4 Outpatients Waiting for a First Appointment (including and excluding cancellations and deferrals) – Five Yearly Trends September 2000 – September 2005



Source: CH3 Parts 1 & 2.

Figure 5 Patients waiting 3 months and over - Five Yearly Trends September 2000 – September 2005

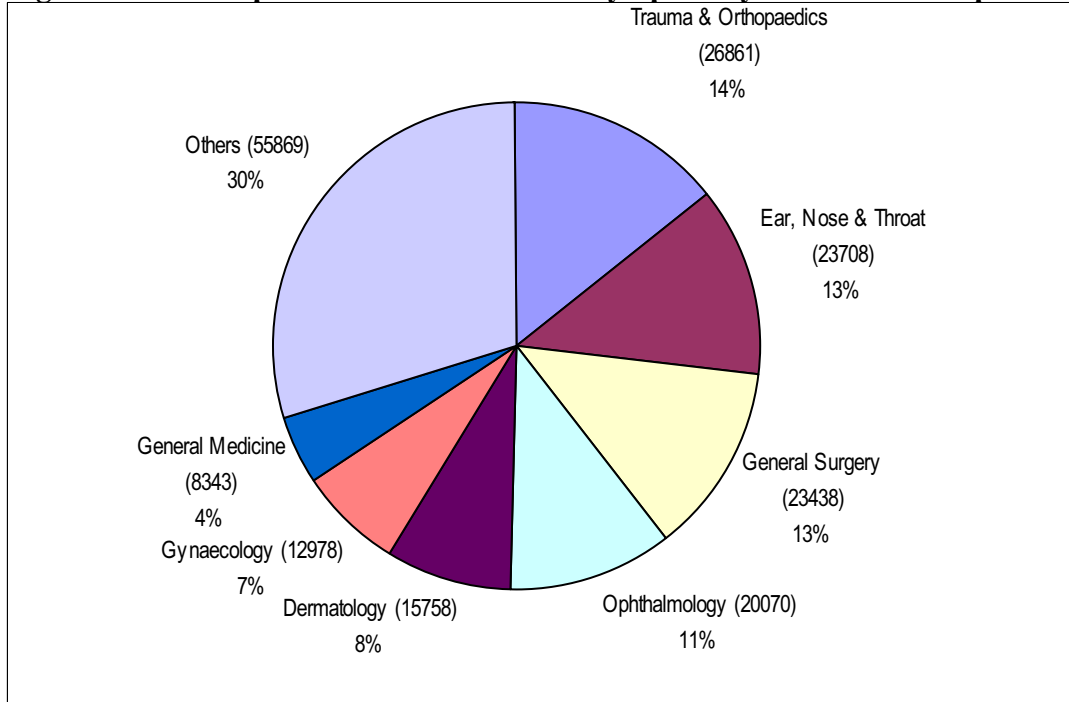


Source: CH3 Parts 1 & 2

Outpatients Waiting by Specialty

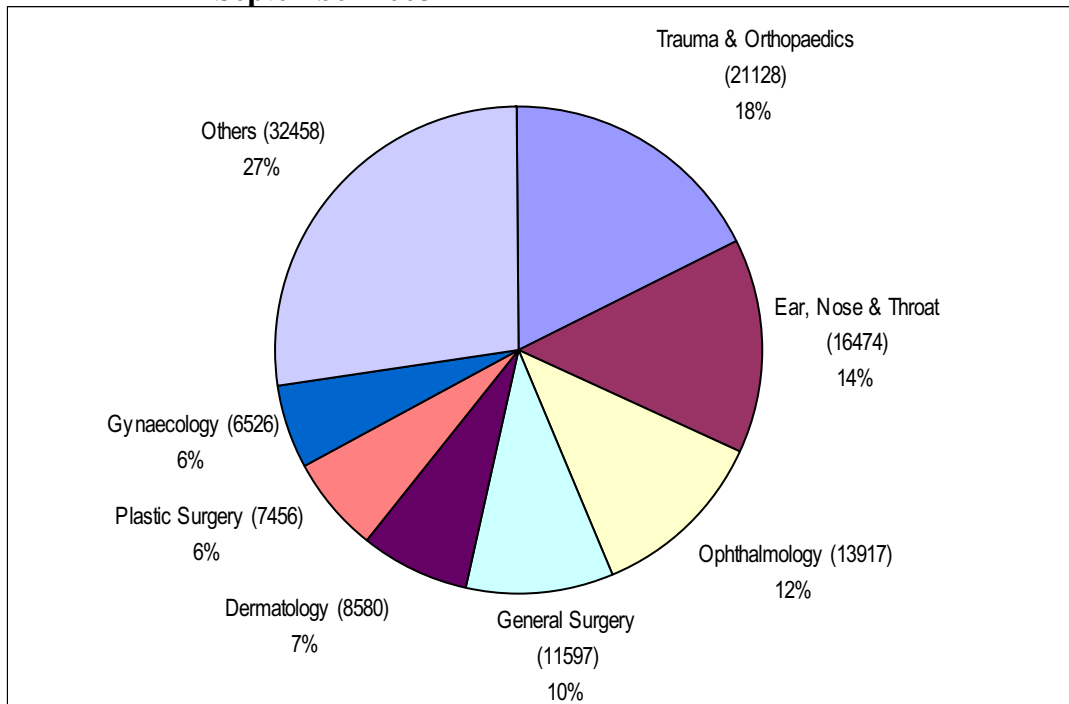
The majority of those waiting (70%) were within seven specialties: Trauma and Orthopaedic Surgery (T&O); Ear, Nose and Throat (ENT); General Surgery; Ophthalmology; Dermatology, Gynaecology (Gynae) and General Medicine (Figure 6a). Figures for patients waiting 3 months and over are shown in Figure 6b. Figures represent the total number waiting for their first outpatient appointment including those who have cancelled or missed a previous appointment during the September 2005 quarter.

Figure 6a Outpatients – Total Waiters by Specialty at the end of September 2005



Source: CH3.

Figure 6b Outpatients – Patients waiting 3 months and over by Specialty at the end of September 2005



Source: CH3.

Outpatient Waiting Time by Specialty

Waiting times for outpatients by specialty are shown in Tables 5a and 5b. The proportion of those waiting less than 12 months ranged from 95.1% in the Mental Illness speciality to 25.5% in Plastic Surgery. Overall four fifths (78.3%) of those waiting for treatment were waiting less than 12 months.

Table 5a Number of Patients Waiting for a First Appointment by Months Waiting and Specialty – September 2005

Specialty	Patients Waiting for an Appointment by Months Waiting											Total Number of Patients Awaiting Appointment
	0 - 2	3 - 5	6 - 8	9 - 11	12 - 14	15 - 17	18 - 20	21 - 23	24 +			
Trauma & Orthopaedics	5,733	4,624	3,096	2,487	2,557	1,935	1,265	855	4,309	26,861		
Ear, Nose & Throat	7,234	6,027	3,743	2,108	1,439	842	779	477	1,059	23,708		
General Surgery	11,841	5,933	2,597	1,433	807	360	238	95	134	23,438		
Ophthalmology	6,153	4,839	2,721	1,885	1,465	1,022	741	464	780	20,070		
Dermatology	7,178	3,790	1,476	1,041	804	384	265	222	598	15,758		
Gynaecology	6,452	3,647	1,391	633	486	206	91	45	27	12,978		
General Medicine	3,886	1,792	880	579	415	273	197	123	198	8,343		
Plastic Surgery	773	578	359	387	378	325	270	212	4,947	8,229		
Cardiology	2,446	1,507	701	528	377	165	40	9	66	5,839		
Neurology	1,530	1,221	780	560	458	301	158	34	26	5,068		
Urology	1,510	896	513	490	456	360	305	148	326	5,004		
Rheumatology	1,133	1,024	567	383	347	285	228	70	38	4,075		
Paediatrics	2,066	1,072	309	93	45	45	56	6	54	3,746		
Mental Illness	2,305	546	224	89	36	35	11	7	74	3,327		
Oral Surgery	935	592	250	198	179	114	104	83	565	3,020		
Pain Management	585	473	281	236	166	101	112	67	363	2,384		
Gastroenterology	725	270	173	147	107	69	27	3	0	1,521		
Paediatric Surgery	639	461	195	62	34	20	31	0	38	1,480		
Restorative Dentistry	270	276	239	95	68	61	34	43	357	1,443		
Dental Medicine Specialities	165	218	190	184	124	72	81	66	90	1,190		
Other	5,330	2,031	862	512	282	173	112	50	191	9,543		
All Specialties	68,889	41,817	21,547	14,130	11,030	7,148	5,145	3,079	14,240	187,025		

Source: CH3

Table 5b Percentage of Patients Waiting for a First Appointment by Months Waiting and Specialty – September 2005

Specialty	Patients Waiting for an Appointment by Months									
	0 - 2	3 - 5	6 - 8	9 - 11	12 - 14	15 - 17	18 - 20	21 - 23	24+	
Trauma & Orthopaedics	21.3%	17.2%	11.5%	9.3%	9.5%	7.2%	4.7%	3.2%	16.0%	
Ear, Nose & Throat	30.5%	25.4%	15.8%	8.9%	6.1%	3.6%	3.3%	2.0%	4.5%	
General Surgery	50.5%	25.3%	11.1%	6.1%	3.4%	1.5%	1.0%	0.4%	0.6%	
Ophthalmology	30.7%	24.1%	13.6%	9.4%	7.3%	5.1%	3.7%	2.3%	3.9%	
Dermatology	45.6%	24.1%	9.4%	6.6%	5.1%	2.4%	1.7%	1.4%	3.8%	
Gynaecology	49.7%	28.1%	10.7%	4.9%	3.7%	1.6%	0.7%	0.3%	0.2%	
General Medicine	46.6%	21.5%	10.5%	6.9%	5.0%	3.3%	2.4%	1.5%	2.4%	
Plastic Surgery	9.4%	7.0%	4.4%	4.7%	4.6%	3.9%	3.3%	2.6%	60.1%	
Cardiology	41.9%	25.8%	12.0%	9.0%	6.5%	2.8%	0.7%	0.2%	1.1%	
Neurology	30.2%	24.1%	15.4%	11.0%	9.0%	5.9%	3.1%	0.7%	0.5%	
Urology	30.2%	17.9%	10.3%	9.8%	9.1%	7.2%	6.1%	3.0%	6.5%	
Rheumatology	27.8%	25.1%	13.9%	9.4%	8.5%	7.0%	5.6%	1.7%	0.9%	
Paediatrics	55.2%	28.6%	8.2%	2.5%	1.2%	1.2%	1.5%	0.2%	1.4%	
Mental Illness	69.3%	16.4%	6.7%	2.7%	1.1%	1.1%	0.3%	0.2%	2.2%	
Oral Surgery	31.0%	19.6%	8.3%	6.6%	5.9%	3.8%	3.4%	2.7%	18.7%	
Pain Management	24.5%	19.8%	11.8%	9.9%	7.0%	4.2%	4.7%	2.8%	15.2%	
Gastroenterology	47.7%	17.8%	11.4%	9.7%	7.0%	4.5%	1.8%	0.2%	0.0%	
Paediatric Surgery	43.2%	31.1%	13.2%	4.2%	2.3%	1.4%	2.1%	0.0%	2.6%	
Restorative Dentistry	18.7%	19.1%	16.6%	6.6%	4.7%	4.2%	2.4%	3.0%	24.7%	
Dental Medicine Specialities	13.9%	18.3%	16.0%	15.5%	10.4%	6.1%	6.8%	5.5%	7.6%	
Other	55.9%	21.3%	9.0%	5.4%	3.0%	1.8%	1.2%	0.5%	2.0%	
All Specialties	36.8%	22.4%	11.5%	7.6%	5.9%	3.8%	2.8%	1.6%	7.6%	

Source: CH3

Outpatient Waiting Time by Programme of Care

Waiting times for a first outpatient appointment by programme of care are shown in Table 6. The vast majority (96.8%) of patients were awaiting their first outpatient appointment in the Acute Services Programme of Care.

Table 6 Number of Patients Waiting for a First Appointment by Months Waiting and Programme of Care – September 2005

Programme of Care	Patients Waiting for an Appointment by Months Waiting										Total Number of Patients Awaiting Appointment
	0 - 2	3 - 5	6 - 8	9 - 11	12 - 14	15 - 17	18 - 20	21 - 23	24 +		
Acute Services	65,112	40,698	21,083	13,966	10,939	7,088	5,109	3,048	14,069		181,112
Elderly Care	1,015	242	66	22	23	9	3	2	2		1,384
Mental Health	2,727	837	385	142	67	51	33	29	169		4,440
Learning Disability	35	40	13	0	1	0	0	0	0		89
All POCs	68,889	41,817	21,547	14,130	11,030	7,148	5,145	3,079	14,240		187,025

Source: CH3

Outpatient Completed Waits

Waiting times for completed outpatient waits are shown in Table 7. During the September 2005 quarter a total of 82,721 outpatients attended their first appointment without having cancelled or missed a previous appointment. 70.8% of patients attended their first outpatient appointment within 3 months of being placed on the waiting list and 95.4% had their first outpatient appointment within 12 months.

Table 7 Completed Outpatient Waits for First Appointment²

Quarter	Time Waiting in Months										Total
	0 - 2	3 - 5	6 - 8	9 - 11	12 - 14	15 - 17	18 - 20	21 - 23	24 +		
J - M 2002	72.4%	17.0%	5.5%	2.9%	0.9%	0.5%	0.3%	0.3%	0.3%	0.3%	85,856
A - J 2002	74.9%	15.3%	4.9%	2.5%	0.9%	0.5%	0.3%	0.2%	0.2%	0.4%	82,282
J - S 2002	71.0%	18.5%	5.1%	2.7%	1.3%	0.5%	0.2%	0.2%	0.2%	0.4%	79,986
O - D 2002	70.2%	17.9%	6.1%	2.7%	1.3%	0.7%	0.4%	0.3%	0.3%	0.6%	88,056
J - D 2002	72.1%	17.2%	5.4%	2.7%	1.1%	0.6%	0.3%	0.2%	0.2%	0.4%	336,180
J - M 2003	70.0%	17.2%	5.6%	2.8%	1.5%	0.9%	0.5%	0.4%	0.4%	1.2%	85,054
A - J 2003	72.1%	15.8%	5.8%	2.8%	1.4%	0.8%	0.4%	0.3%	0.3%	0.7%	84,963
J - S 2003	69.5%	18.4%	5.7%	2.5%	1.5%	0.7%	0.5%	0.3%	0.3%	0.9%	80,128
O - D 2003	69.6%	17.9%	5.6%	2.6%	1.7%	0.8%	0.5%	0.4%	0.4%	0.9%	88,711
J - D 2003	70.3%	17.3%	5.7%	2.7%	1.5%	0.8%	0.5%	0.3%	0.3%	0.9%	338,856
J - M 2004	69.8%	17.1%	5.2%	2.9%	1.7%	1.3%	0.6%	0.4%	0.4%	1.1%	91,496
A - J 2004	71.8%	15.9%	5.5%	2.7%	1.7%	0.9%	0.6%	0.3%	0.3%	0.6%	88,213
J - S 2004	70.6%	17.9%	5.4%	2.5%	1.4%	0.8%	0.4%	0.3%	0.3%	0.6%	84,455
O - D 2004	68.9%	17.3%	7.0%	2.6%	1.4%	0.9%	0.7%	0.4%	0.4%	0.7%	91,915
J - D 2004	70.3%	17.1%	5.8%	2.7%	1.6%	1.0%	0.6%	0.3%	0.3%	0.8%	356,079
J - M 2005	68.4%	16.4%	7.0%	3.3%	1.7%	1.3%	0.6%	0.4%	0.4%	0.9%	86,944
A - J 2005	70.1%	15.6%	6.9%	2.9%	1.9%	0.7%	0.5%	0.3%	0.3%	1.0%	91,489
J - S 2005	70.8%	16.0%	5.7%	2.9%	1.7%	1.1%	0.5%	0.4%	0.4%	0.9%	82,721

Source: CH4 Part 1

² Refer to Technical Notes – point 14.

Technical Notes

1. The sources for the data contained in this release are the Information Returns CH1, CH2, CH3 and CH4. These returns collect information from Hospital Trusts on a quarterly basis.
2. Trust based information (CH1, CH2, CH3 and CH4) returns include all patients living outside Northern Ireland and all privately funded patients waiting for treatment in Health Service hospitals. This Trust based information falls within the scope of National Statistics.
3. Patients waiting 12 months and over include all patients in the following time bands: 12-14, 15-17, 18-20, 21-23 and 24+ months. Patients waiting 18 months and over include all patients in the following time bands: 18-20, 21-23 and 24+ months.
4. Inpatient waiting list data comprises the number of patients waiting for ordinary admission to hospital and the number of patients waiting for day case treatment.
5. Ordinary admissions include both (a) patients admitted electively with the expectation that they will remain in hospital for at least one night, and (b) non-elective admissions (e.g. emergency admissions). A patient who is admitted with either of the above intentions, but who leaves hospital for any reason without staying overnight, is still counted as an ordinary admission. Day cases are not included.
6. Day Cases are patients admitted electively during the course of a day with the intention of receiving care who do not require the use of a hospital bed overnight and who return home as scheduled. If this original intention is not fulfilled and the patient stays overnight, such a patient is counted as an ordinary admission.
7. The waiting list inpatient figures presented include people waiting to be admitted as inpatients either as day cases or ordinary admissions. They do not include:
 - Patients admitted as emergency cases;
 - Outpatients;
 - Patients undergoing a planned programme of treatment e.g. a series of admissions for chemotherapy;
 - Maternity (specialties 510 and 520);
 - Patients already in hospitals but included on other waiting lists;
 - Patients who are temporarily suspended from waiting lists.
8. Waiting time begins from the date the clinician decided to admit the patient. Patients subsequently offered a date but unable to attend have their waiting times calculated from the most recent date offered. These are known as self-deferred cases and are included in the total number waiting.
9. IVF treatments that were previously included on the inpatient daycase waiting list have been removed. After extensive investigation, it was discovered that England, Scotland and Wales do not include these figures in their published waiting list statistics. The reason for their exclusion is that they are planned procedures which by definition are excluded from the inpatient waiting list figures returned to the department. This change has been backdated to correct previous quarters' data and enable comparison on a like-for-like basis ensuring that there is no artificial drop in numbers.
10. Inpatient waiting list figures were found to have increased slightly between the March 2005 and June 2005 quarters rather than the small decrease originally reported in the June 2005 Bulletin. Due to the removal of IVF waiters (as per Technical Note 9), there was a small increase of 121 in the total inpatient waiting list between March 2005 and June 2005 quarters.

11. Revisions to outpatient waiting list statistics since the last publication:
 - Outpatient Figures for quarter ending 30th June 2005 were revised following amendments received from Sperrin Lakeland and Royal Group of Hospitals HSS Trusts.
12. Outpatients are defined as patients still waiting for their first outpatient appointment at the end of the quarter. An outpatient appointment is to enable a patient to see a consultant, a member of his firm or locum for such a member, in respect of one referral.
13. Outpatient waiting list figures presented do not include maternity specialties 510 and 520.
14. Due to reasons beyond the control of the Trust, United Hospitals HSS Trust has been unable to produce CH4 data for all quarters between December 2001 and September 2005. This Trust has provided estimated totals for these quarters and estimates for each time band have been calculated. These new estimates for the missing data for the United Group of Hospitals have been included in the data shown in Table 7. When CH4 data becomes available these estimates will be recast.
15. Department of Health, Social Services and Public Safety policy is to publish revised figures with subsequent statistical releases unless it is decided that the magnitude of the change merits earlier notification.
16. Figures relating to the quarter ending 31st December 2005 will be released on Thursday, 2nd March 2006.
17. For general enquiries about National Statistics, contact the National Statistics Public Service on

020 7533 5888

minicom: 01633 812399

E-mail: info@statistics.gov.uk

Fax: 01633 652747

Letters: room DG/18, Drummond Gate,
LONDON SW1V 2QQ

You can also find National Statistics on the internet – Go to www.statistics.gov.uk.

Additional Information

Further information on waiting lists in Northern Ireland is available from:

Office Information Manager
Hospital Information Branch
Department of Health, Social Services and Public Safety
Annexe 2
Castle Buildings
Stormont
BT4 3SQ

E-mail: rib@dhsspsni.gov.uk

Internet address: <http://www.dhsspsni.gov.uk/stats&research/order.asp#waiting>