

## Section 1

### Health and Personal Social Services Staff

		Page
	<b>Summary Points</b>	<b>7</b>
<b>Table 1(a)</b>	<b>NI HPSS Staff split by Main Location, Full-time, Part-time and WTE</b>	<b>8</b>
<b>Figure 1(a)</b>	<b>NI HPSS Staff: Full-time and Part-time</b>	<b>8</b>
<b>Table 1(b)</b>	<b>NI HPSS Staff split by Gender, Main Location, Full-time, Part-time and WTE</b>	<b>9</b>
<b>Figure 1(b)</b>	<b>NI HPSS Staff: Gender, Full-time, and Part-time</b>	<b>9</b>
<b>Table 1(c)</b>	<b>NI HPSS Staff by Terms and Conditions Group split by Full-time, Part-time and WTE</b>	<b>10</b>
<b>Figure 1(c)</b>	<b>NI HPSS Staff: Terms and Conditions Group, Full-time and Part-time</b>	<b>10</b>
<b>Table 1(d)</b>	<b>NI HPSS Staff by Terms and Conditions Group split by Gender, Full-time, Part-time and WTE</b>	<b>11</b>
<b>Figure 1(d)</b>	<b>NI HPSS Staff: Terms and Conditions Group, Full-time and Part-time</b>	<b>11</b>
<b>Table 1(e)</b>	<b>Full-time NI HPSS Staff by Terms and Conditions Group split by 5-year Age Bands</b>	<b>12</b>
<b>Figure 1(e)</b>	<b>Full-time NI HPSS Staff: 5-year Age Bands</b>	<b>12</b>
<b>Table 1(f)</b>	<b>NI HPSS Staff by Gender, Full-time, Part-time, and 5-year Age Bands</b>	<b>13</b>

## **Summary Points**

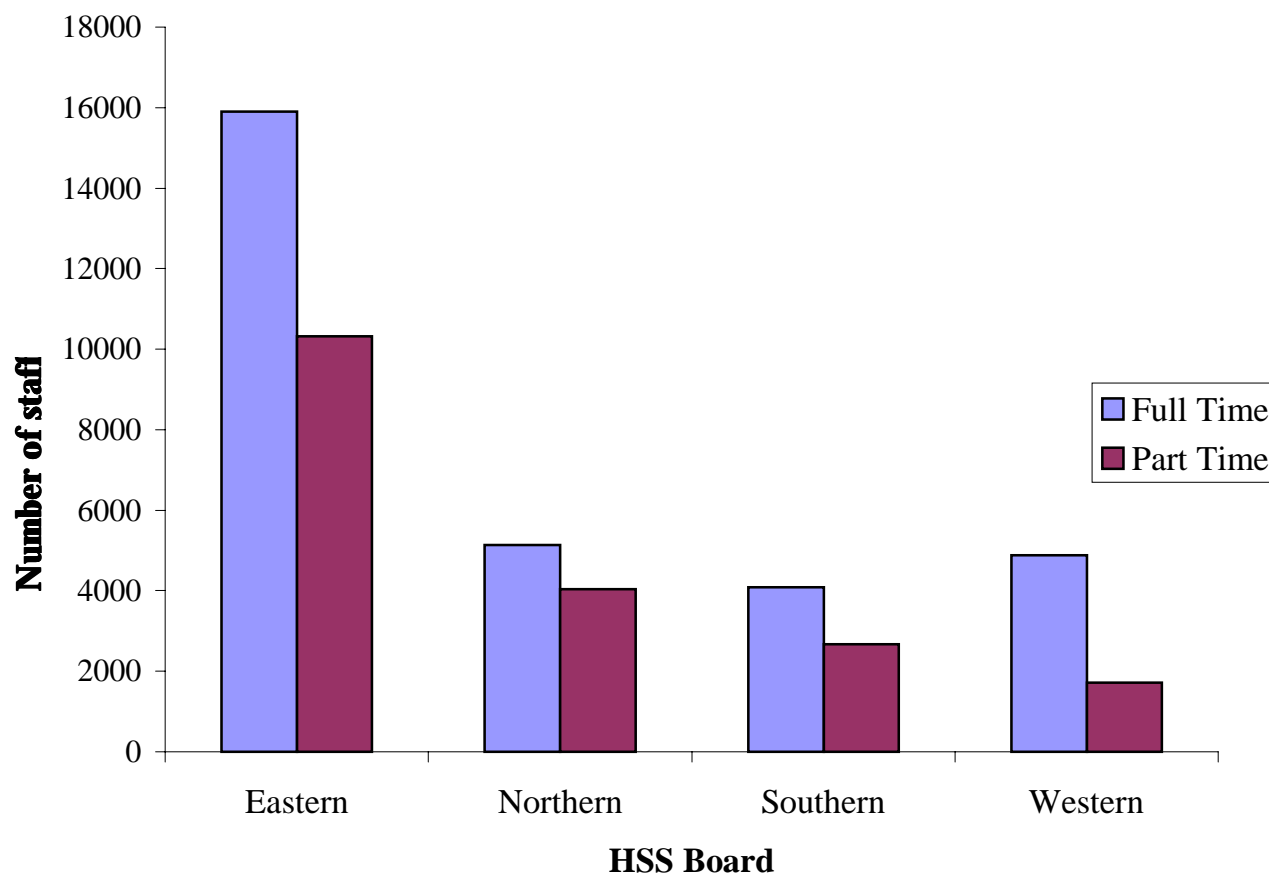
**In September 2001:**

- **The HPSS employed 48,758 people (excluding bank staff and home help staff) (41,881 WTE)**
- **The majority (54%) of staff worked or were based in the Eastern HSS Board**
- **38% of staff worked part-time**
- **The Northern HSS Board had the highest proportion of part-time staff (44%) and the Western HSS Board the lowest (26%)**
- **45% of female staff worked part-time compared to 13% of male staff**
- **The Nursing, Midwifery and Health Visiting group represented the largest proportion of the workforce (36%) followed by Administration and Clerical (22%) and Ancillary and General (15%)**
- **Nursing, Midwifery and Health Visiting group had the highest rate of female staff (92%) followed by Administration and Clerical (83%)**
- **Just over half (53%) of female staff were under the age of 40**
- **Just over two thirds (69%) of full-time Medical and Dental staff were under the age of 40 compared to 46% of Social Services staff**
- **Around 57% of full-time female staff were under the age of 40**
- **18% of female staff were 50 or over**
- **Less than half (47%) of full-time male staff were under the age of 40**
- **Just over half (55%) of part-time female staff were in the 30 - 44 age group**

**Table 1(a): NI HPSS Staff split by Main Location  
Full-time, Part-time and WTE**

HSS Board	Full-time	Part-time	Total		
	Count	Count	WTE	Count	WTE
Eastern Board	15902	10316	6510.8	26218	22412.8
Northern Board	5131	4039	2550.2	9170	7681.2
Southern Board	4087	2679	1761.2	6766	5848.2
Western Board	4886	1718	1052.6	6604	5938.6
<b>Total</b>	<b>30006</b>	<b>18752</b>	<b>11874.7</b>	<b>48758</b>	<b>41880.7</b>

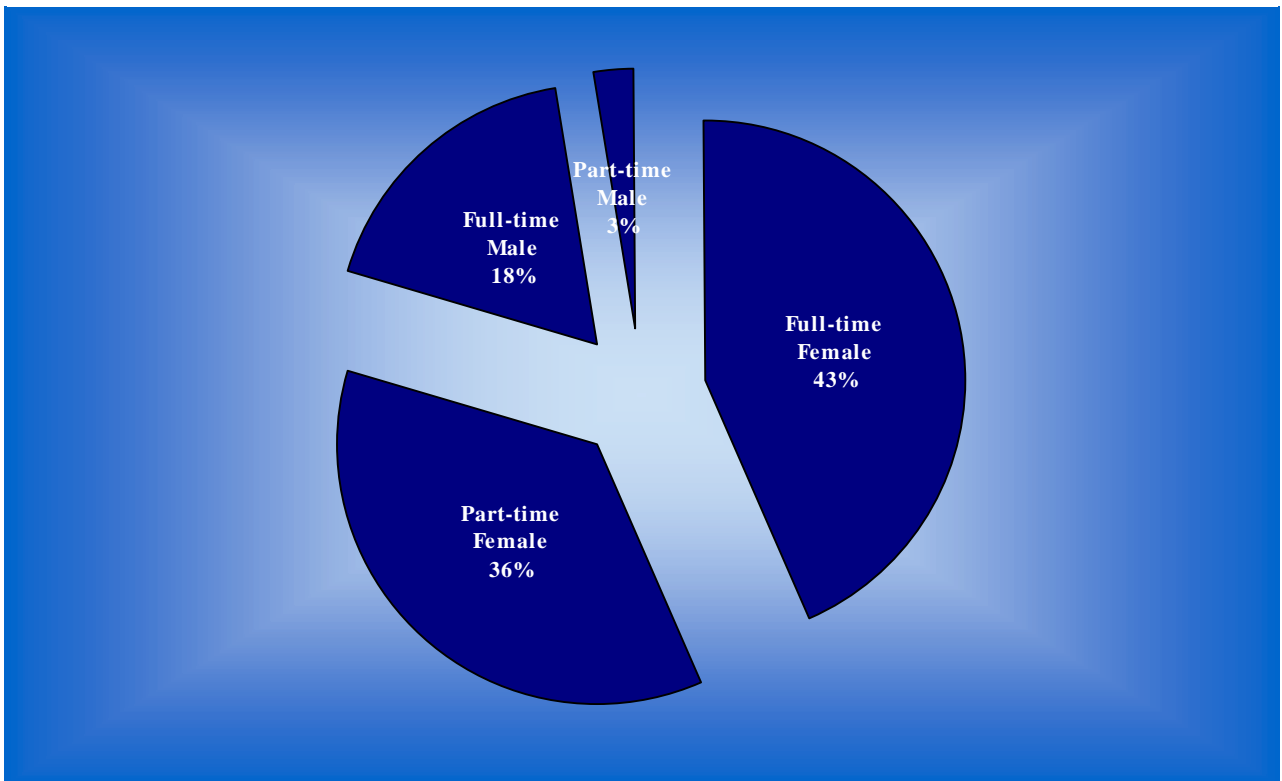
**Figure 1(a): NI HPSS Staff: Full-time and Part-time**



**Table 1(b): NI HPSS Staff split by Gender, Main Location, Full-time, Part-time and WTE**

HSS Board	FEMALE					MALE				
	Full-time Count	Part-time Count	WTE	Total Count	WTE	Full-time Count	Part-time Count	WTE	Total Count	WTE
Eastern Board	10642	9435	5937.2	20077	16579.2	5260	881	573.6	6141	5833.6
Northern Board	3946	3907	2467.5	7853	6413.5	1185	132	82.7	1317	1267.7
Southern Board	3095	2580	1707.1	5675	4802.2	992	99	54.0	1091	1046.0
Western Board	3513	1560	964.1	5073	4477.1	1373	158	88.5	1531	1461.5
<b>Total</b>	<b>21196</b>	<b>17482</b>	<b>11075.9</b>	<b>38678</b>	<b>32271.9</b>	<b>8810</b>	<b>1270</b>	<b>798.8</b>	<b>10080</b>	<b>9608.8</b>

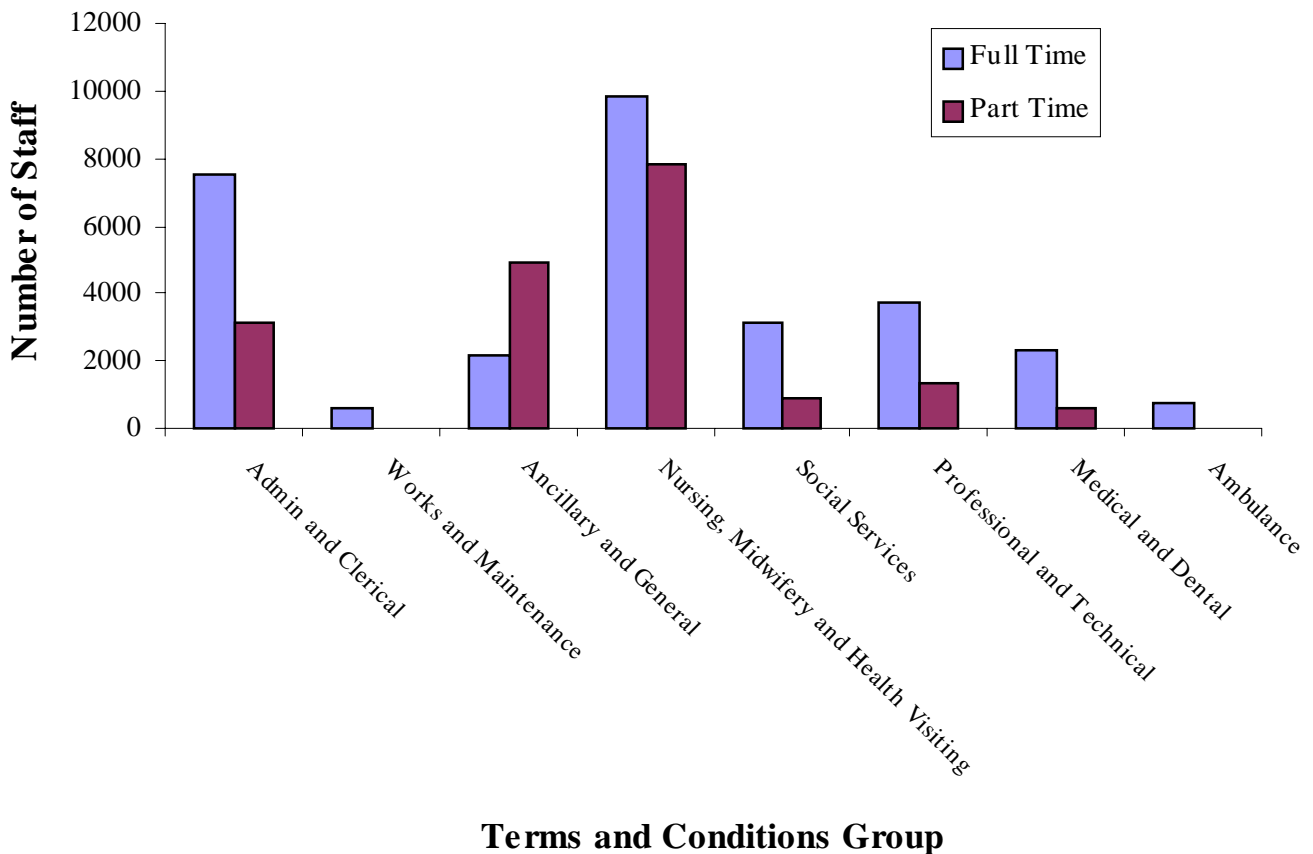
**Figure 1(b): NI HPSS Staff: Gender, Full-time and Part-time**



**Table 1(c): NI HPSS Staff by Terms and Conditions Group split  
by Full-time, Part-time and WTE**

Terms and Conditions	Full-time		Part-time		Total	
	Count	Count	WTE	Count	WTE	
Admin and Clerical	7536	3136	1897.3	10672	9433.3	
Works and Maintenance	566	0	0	566	566.0	
Ancillary and General	2171	4918	3072.9	7089	5243.9	
Nursing and Midwifery	9828	7814	5202.7	17642	15030.7	
Social Services	3127	911	582.4	4038	3709.4	
Professional and Technical	3762	1369	792.8	5131	4554.9	
Medical and Dental	2281	597	323.0	2878	2604.0	
Ambulance	735	7	3.6	742	738.6	
<b>Total</b>	<b>30006</b>	<b>18752</b>	<b>11874.7</b>	<b>48758</b>	<b>41880.7</b>	

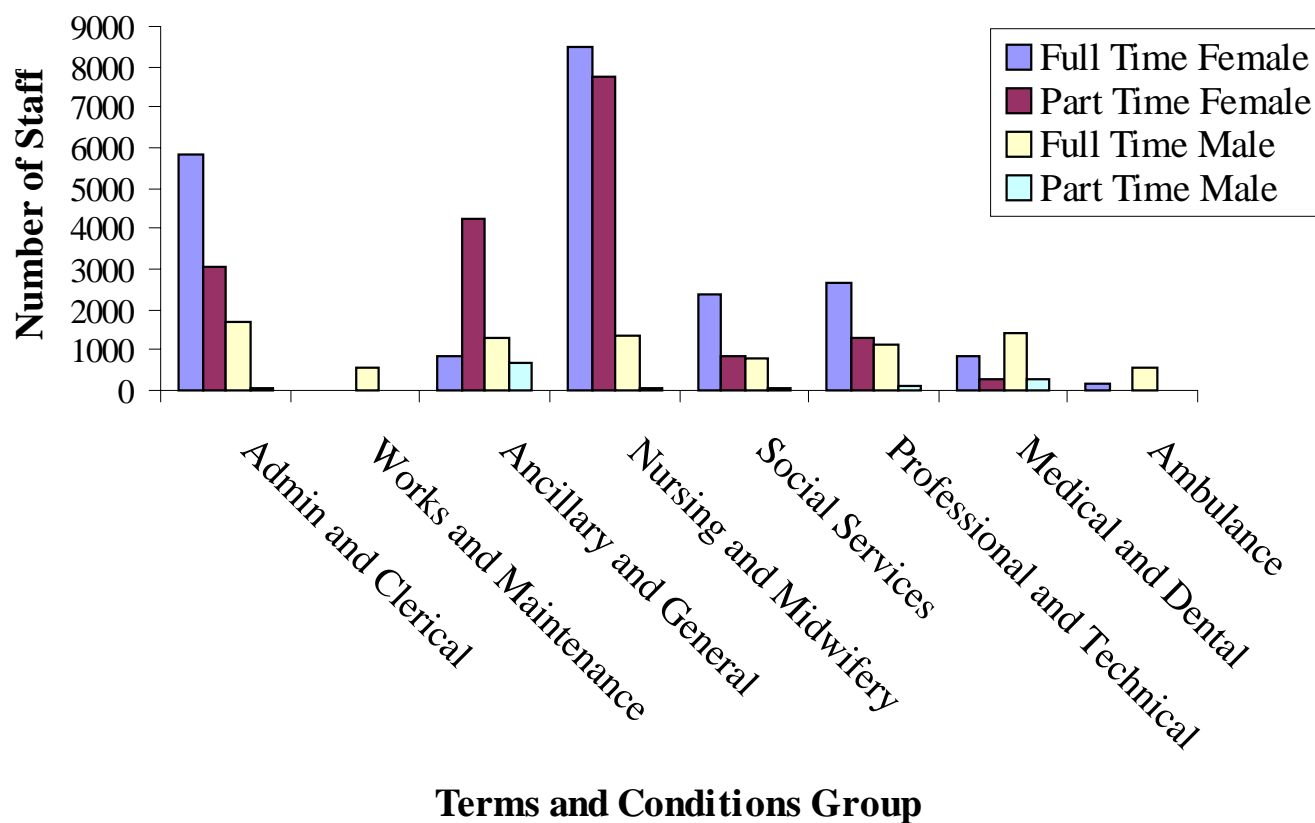
**Figure 1(c): NI HPSS Staff: Terms and Conditions Group, Full-time and Part-time**



**Table 1(d): NI HPSS Staff by Terms and Conditions Group split by Gender, Full-time, Part-time and WTE**

Terms and Conditions	FEMALE					MALE				
	Full-time		Part-time		Total	Full-time		Part-time		Total
	Count	WTE	Count	WTE	Count	Count	WTE	Count	WTE	
Admin and Clerical	5845	3065	1854.4	8910	7699.4	1691	71	42.9	1762	1733.9
Works and Maintenance	0	0	0	0	0	566	0	0	566	566.0
Ancillary and General	852	4227	2611.5	5079	3463.5	1319	691	461.4	2010	1780.4
Nursing and Midwifery	8489	7750	5155.1	16239	13644.1	1339	64	47.6	1403	1386.6
Social Services	2351	864	550.0	3215	2901.0	776	47	32.4	823	808.4
Professional and Technical	2646	1282	754.3	3928	3400.3	1116	87	38.5	1203	1154.5
Medical and Dental	864	288	147.7	1152	1011.7	1417	309	175.4	1726	1592.4
Ambulance	149	6	3.0	155	152.0	586	-	-	587	586.6
<b>Total</b>	<b>21196</b>	<b>17482</b>	<b>11075.9</b>	<b>38678</b>	<b>32271.9</b>	<b>8810</b>	<b>1270</b>	<b>798.8</b>	<b>10080</b>	<b>9608.8</b>

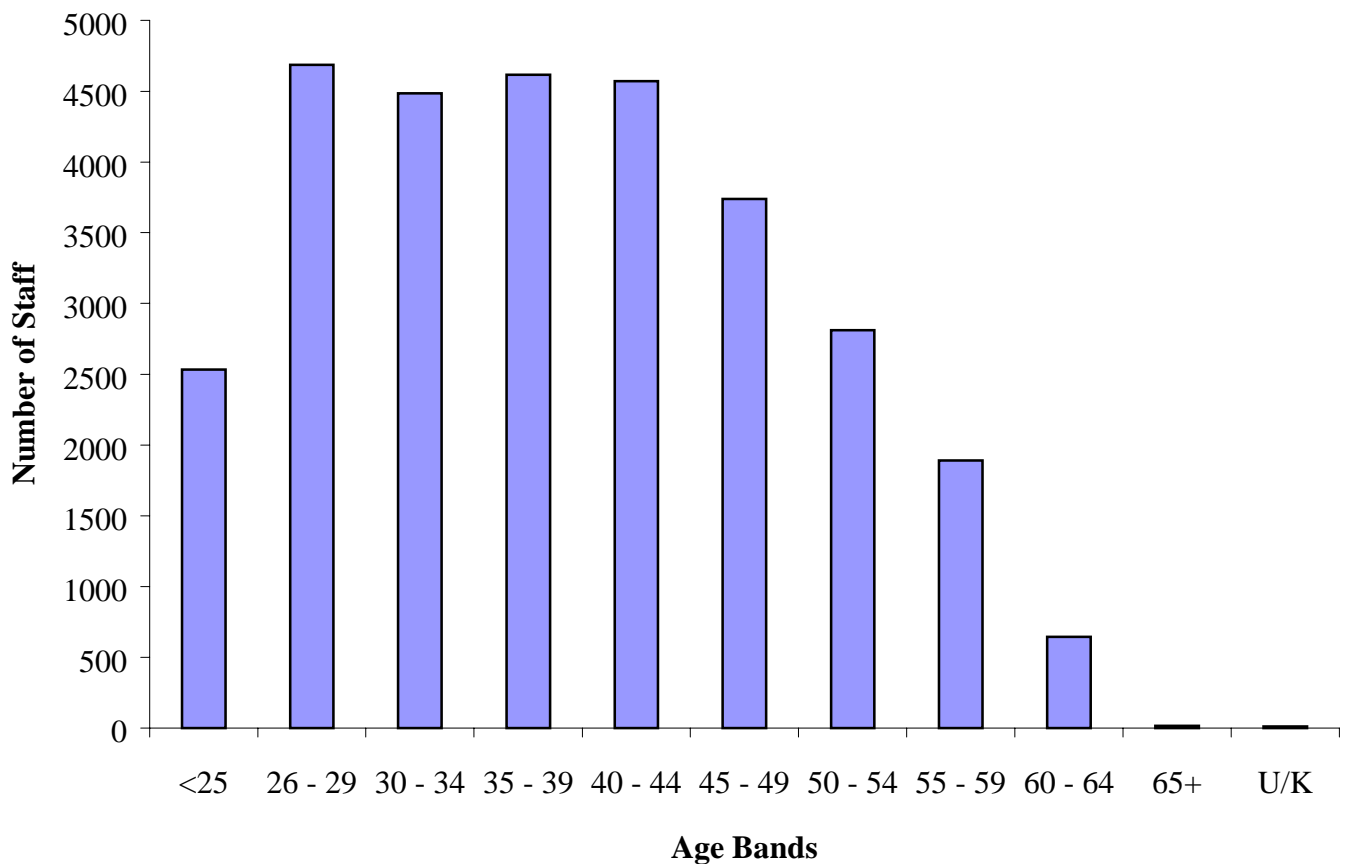
**Figure 1(d): NI HPSS Staff: Terms and Conditions Group, Full-time and Part-time**



**Table 1(e): Full-time NI HPSS Staff by Terms and Conditions Group split by 5-year Age Bands**

Terms and Conditions	<25	26 - 29	30 - 34	35 - 39	40 - 44	45 - 49	50 - 54	55 - 59	60 - 64	65+	U/K	Total
Admin and Clerical	922	1117	1186	1013	1031	951	707	463	130	8	8	7536
Works and Maintenance	-	11	18	45	94	105	112	106	72	-	0	566
Ancillary and General	127	158	231	314	335	268	293	297	147	0	-	2171
Nursing and Midwifery	678	1509	1467	1726	1663	1242	885	524	134	0	0	9828
Social Services	87	331	499	530	578	484	335	212	70	-	0	3127
Professional and Technical	494	818	555	478	508	397	298	162	49	-	0	3762
Medical and Dental	205	635	387	343	253	197	126	95	36	-	-	2281
Ambulance	20	106	144	165	108	95	57	32	8	0	0	735
<b>Total</b>	<b>2534</b>	<b>4685</b>	<b>4487</b>	<b>4614</b>	<b>4570</b>	<b>3739</b>	<b>2813</b>	<b>1891</b>	<b>646</b>	<b>15</b>	<b>12</b>	<b>30006</b>

**Figure 1(e): Full-time NI HPSS Staff: 5-year Age Bands**



**Table 1(f): NI HPSS Staff by Gender, Full-time, Part-time,  
and 5-year Age Bands**

<b>Full-time Female</b>	<b>&lt; 25</b>	<b>26 - 29</b>	<b>30 - 34</b>	<b>35 - 39</b>	<b>40 - 44</b>	<b>45 - 49</b>	<b>50 - 54</b>	<b>55 - 59</b>	<b>60 - 64</b>	<b>65+</b>	<b>U/K</b>	<b>Total</b>
Admin and Clerical	762	934	930	763	761	704	535	371	78	5	-	5845
Ancillary and General	53	66	75	102	116	117	133	143	46	0	-	852
Nursing and Midwifery	618	1368	1261	1427	1414	1048	754	483	116	0	0	8489
Social Services	79	295	401	372	413	325	249	167	50	0	0	2351
Professional and Technical	407	673	448	308	323	228	148	89	22	0	0	2646
Medical and Dental	122	295	155	110	71	61	25	21	-	0	-	864
Ambulance	9	42	49	29	11	7	-	0	-	0	0	149
<b>Total</b>	<b>2050</b>	<b>3673</b>	<b>3319</b>	<b>3111</b>	<b>3109</b>	<b>2490</b>	<b>1845</b>	<b>1274</b>	<b>316</b>	<b>5</b>	<b>-</b>	<b>21196</b>
<b>Full-time Male</b>	<b>&lt; 25</b>	<b>26 - 29</b>	<b>30 - 34</b>	<b>35 - 39</b>	<b>40 - 44</b>	<b>45 - 49</b>	<b>50 - 54</b>	<b>55 - 59</b>	<b>60 - 64</b>	<b>65+</b>	<b>U/K</b>	<b>Total</b>
Admin and Clerical	160	183	256	250	270	247	172	92	52	-	6	1691
Works and Maintenance	-	11	18	45	94	105	112	106	72	-	0	566
Ancillary and General	74	92	156	212	219	151	160	154	101	0	0	1319
Nursing and Midwifery	60	141	206	299	249	194	131	41	18	0	0	1339
Social Services	8	36	98	158	165	159	86	45	20	-	0	776
Professional and Technical	87	145	107	170	185	169	150	73	27	-	0	1116
Medical and Dental	83	340	232	233	182	136	101	74	33	-	-	1417
Ambulance	11	64	96	136	97	88	56	32	7	0	0	586
<b>Total</b>	<b>484</b>	<b>1012</b>	<b>1168</b>	<b>1503</b>	<b>1461</b>	<b>1249</b>	<b>968</b>	<b>617</b>	<b>330</b>	<b>10</b>	<b>8</b>	<b>8810</b>
<b>Part-time Female</b>	<b>&lt; 25</b>	<b>26 - 29</b>	<b>30 - 34</b>	<b>35 - 39</b>	<b>40 - 44</b>	<b>45 - 49</b>	<b>50 - 54</b>	<b>55 - 59</b>	<b>60 - 64</b>	<b>65+</b>	<b>U/K</b>	<b>Total</b>
Admin and Clerical	136	249	520	599	539	388	343	210	79	-	0	3065
Ancillary and General	480	338	512	660	581	511	493	460	187	-	0	4227
Nursing and Midwifery	85	455	1107	1907	1664	1062	769	534	165	-	0	7750
Social Services	23	49	122	206	167	126	88	60	21	-	0	864
Professional and Technical	23	77	234	330	293	136	94	66	25	-	0	1282
Medical and Dental	0	8	36	68	65	53	25	20	11	-	0	288
Ambulance	-	-	0	0	-	-	0	0	0	0	0	6
<b>Total</b>	<b>749</b>	<b>1177</b>	<b>2531</b>	<b>3770</b>	<b>3311</b>	<b>2277</b>	<b>1812</b>	<b>1350</b>	<b>488</b>	<b>13</b>	<b>0</b>	<b>17482</b>
<b>Part-time Male</b>	<b>&lt; 25</b>	<b>26 - 29</b>	<b>30 - 34</b>	<b>35 - 39</b>	<b>40 - 44</b>	<b>45 - 49</b>	<b>50 - 54</b>	<b>55 - 59</b>	<b>60 - 64</b>	<b>65+</b>	<b>U/K</b>	<b>Total</b>
Admin and Clerical	5	8	9	8	11	7	6	11	-	-	-	71
Ancillary and General	220	97	120	80	59	43	30	23	19	0	0	691
Nursing and Midwifery	-	-	11	24	10	5	-	-	-	0	0	64
Social Services	-	5	5	8	13	7	5	-	-	0	0	47
Professional and Technical	5	-	12	10	13	9	5	12	-	-	10	87
Medical and Dental	0	-	16	24	57	63	66	49	20	6	6	309
Ambulance	0	0	-	0	0	0	0	0	0	0	0	-
<b>Total</b>	<b>233</b>	<b>120</b>	<b>174</b>	<b>154</b>	<b>163</b>	<b>134</b>	<b>115</b>	<b>100</b>	<b>49</b>	<b>11</b>	<b>17</b>	<b>1270</b>