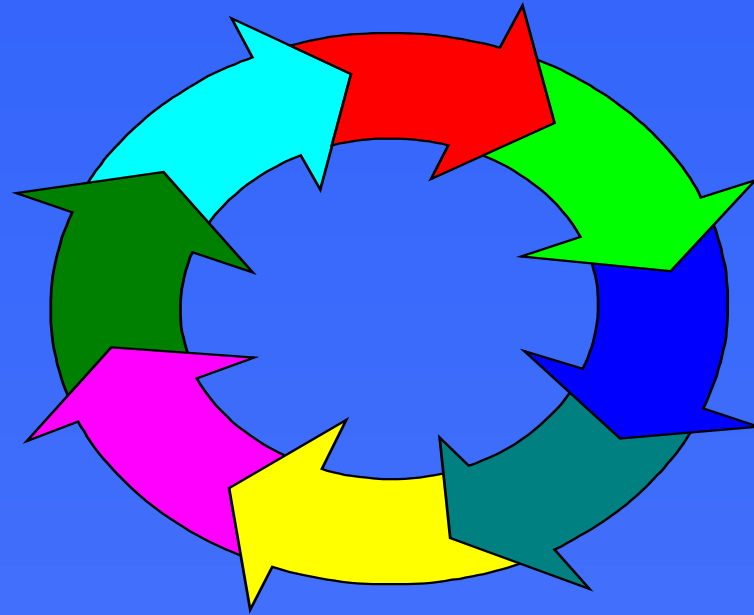


Drug Information and Research Unit



Workshop on Evaluation Appraisal

Workshop 2

April 2001

Introductions

- Kieron Moore
 - Drug Information Research Unit
- Sandra McElhinney
 - Drug Information Research Unit
- Eileen Beamish
 - Research and Evaluation Services

Purpose of the Workshop

- More evaluation advice and opportunity to share practice
- Suggest other sources of information and guidance
- Tool for self-appraising evaluations

Team Exercise

Gathering the proof of your outcomes



WHAT....

Possible aspects to measure...

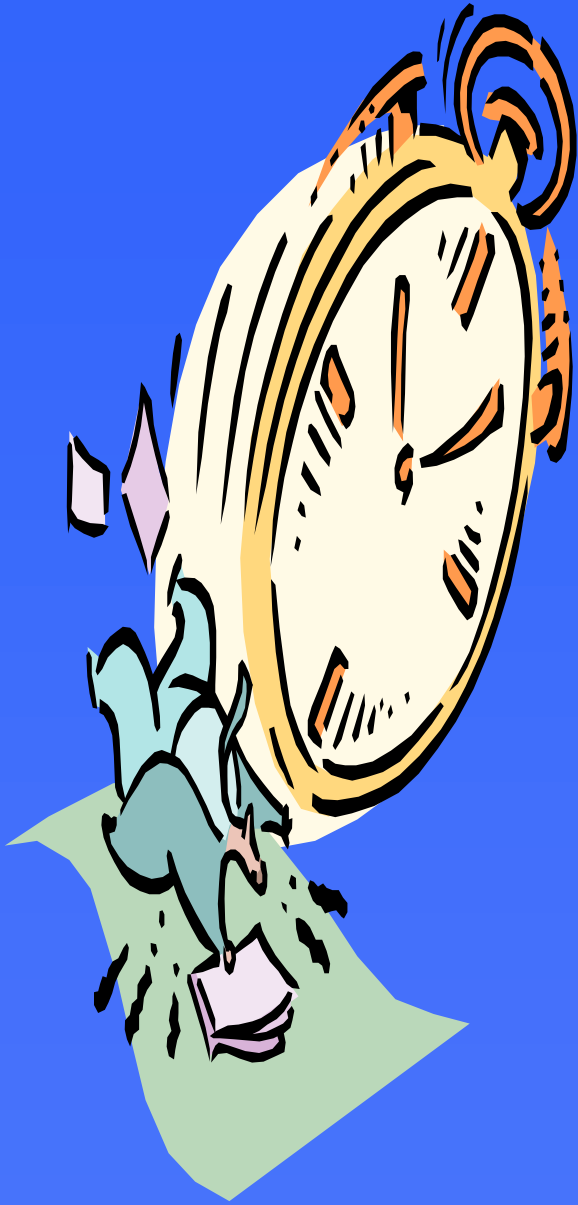
- Who is taking what, how much, how often - baseline
- Individual's level of use
- Different drugs being used, frequency, intensity, strength
- Perceptions of dependency

Constraints...

Reported and unreported levels?

Is your data reliable?

How Often?....



**Needs Assessment / Baseline
Information**



Structured Inputs



Process



**Immediate and Intermediate
Outputs**



Longer-term Outcomes

Type of Information?

- **Baseline**
- **Input**
- **Output**
- **Outcome**
- **Context**

Methods for collecting information?

Quantitative Data:

- Routine data collection;
- Collection records from practice records;
- Surveys, questionnaires;
- Randomised Control Trials;
- Quasi – experimental;

Qualitative Data:

- Postal Surveys;
- Focus / Discussion Groups;
- Telephone Interviews;
- Observation (participant and non-participant);
- Rapid Appraisal;
- Interviews (structured, semi-structured, unstructured);
- Diaries;
- Case Studies;

WHERE?...from whom...

Possible Sources

- Primary and secondary sources
- Individual's themselves (interviews, surveys, tests...)
- Research statistics and studies
 - national
 - regional
 - local
 - (examples in proposals)

Constraints...

“Up-to-dateness”?

Relevance - Specific the area and client group

WHERE?...which sources...

Possible Sources

- Government departments, DIRU, NISRA, HHS Councils
- Library - publications
- Internet
- Other groups (local / regional / national / international)
- Umbrella organisations
- Information bodies

Constraints...

Accessibility / confidentiality

Applicability - completeness

Objectivity

Interpretation / comparability

Who will be involved in the collection of information?

Internal

- Project Co-ordinator
- Project Staff
- Project Management
- Team

External

- Researchers
- Evaluators

Groups (Stakeholders) involved in the use of information

- Funders - existing and potential
- Clients
- Project staff and management
- Other projects working in related areas
- Research institutions / publications / individuals
- Key stakeholders locally, local partnerships
- Special sectoral interest groups eg youth etc
- Local / national media
- Government departments - policy makers and funders
- General public

Real Life Problems

What Information?

*Reported and unreported levels?
Is your data reliable?*

How Often?

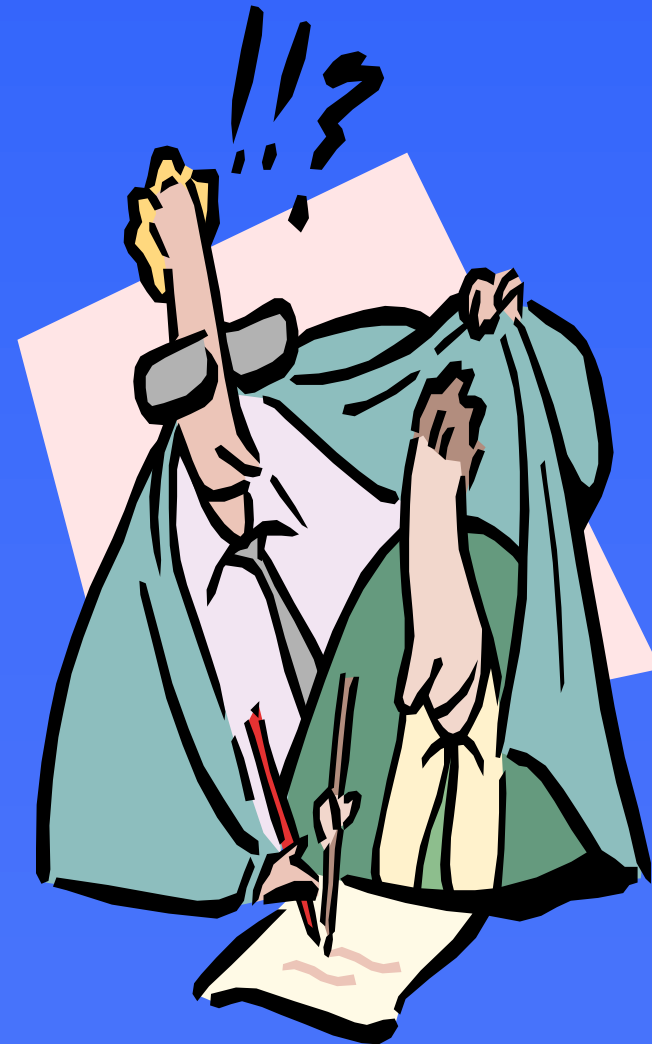
*Contemporaneous
Reliability
Missing small level changes*

Where/From Whom?

*Relevance - Specific the area and
client group*

Where/From Where?

*Accessibility / confidentiality
Applicability - completeness
Objectivity
Interpretation / comparability*



Our suggestions



- **Published Material**
 - ✓ Books
 - ✓ Articles
 - ✓ News Releases
 - ✓ Departmental / Statutory Publications

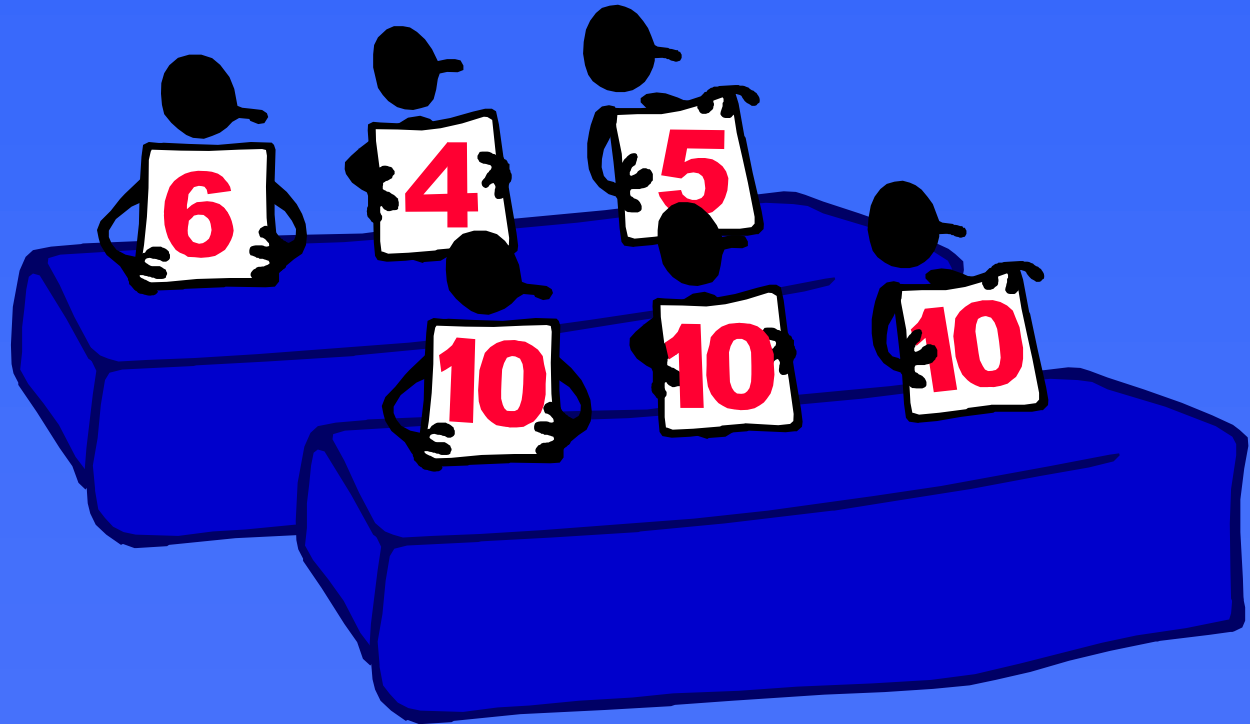
- **Internet Sources**
 - ✓ Web-site
 - ✓ Hyperlinks



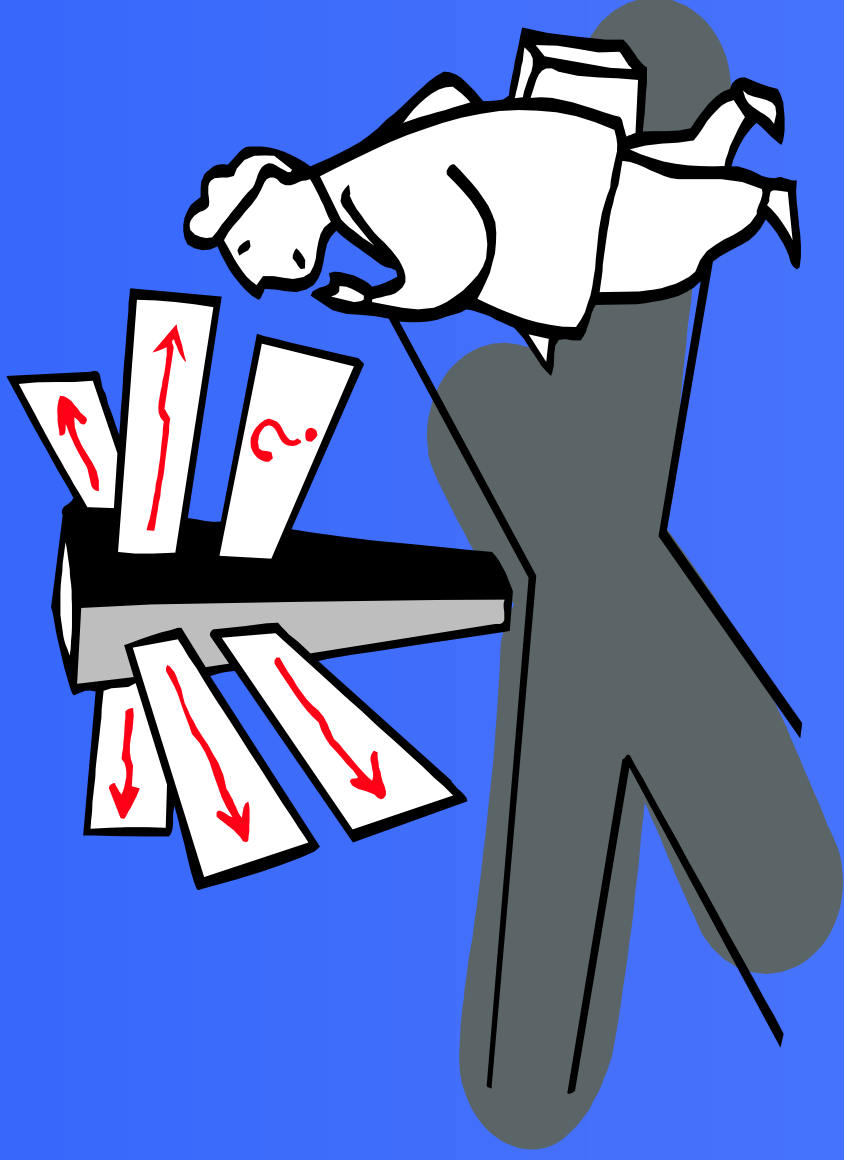
Tool-kit for Self- Appraising Evaluations



Your Evaluation of Us!



Concluding Remarks....



Drug Information and Research Unit

Please do not hesitate to
contact us if you
require any further
information:

Sandra McElhinney
(DIRU)

028 905 22333

